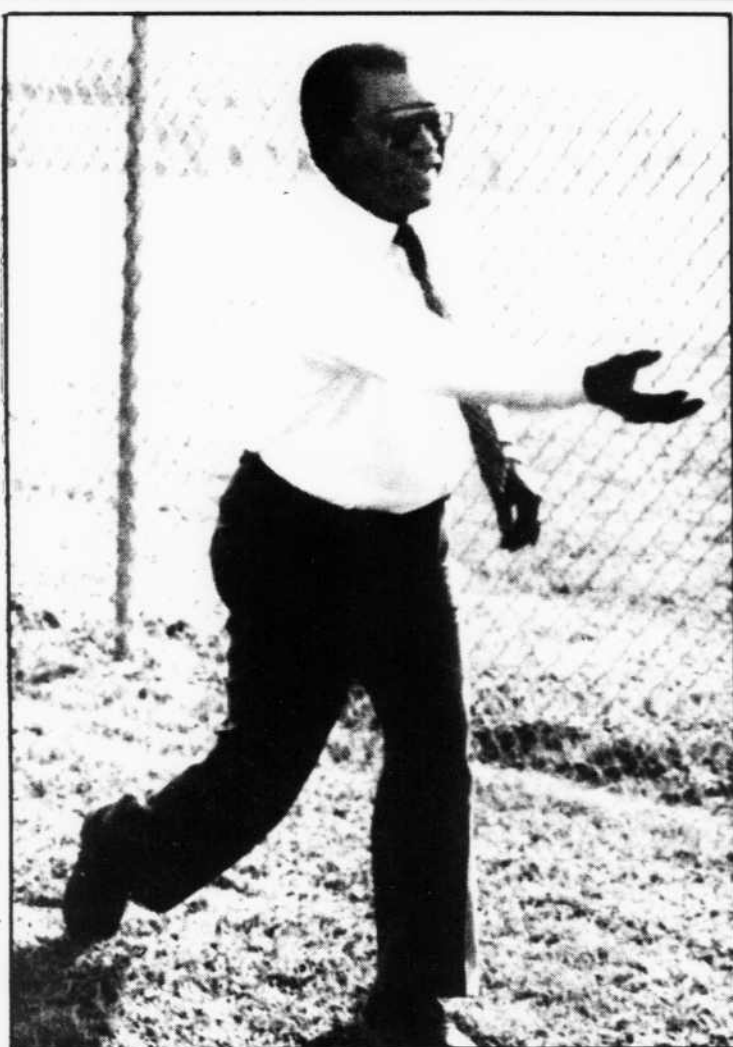


SIDELINES

September 12, 1991

Middle Tennessee State University

Volume 66, Number 16



Mark Miller/Photographer

WARMING UP FOR THE BIG PITCH: Dr. James Walker prepares to throw out the first pitch of a softball game sponsored by the sorority Alpha Omega Pi and the fraternity Pi Kappa Alpha. All the proceeds of the game went to charity.

Vice president search under way

RICK JENNINGS
News Editor

University President James Walker is interviewing three candidates for the vice president of Development and University Relations position.

Dr. Walker previously interviewed three candidates, and this week one of them will be returning along with two new prospects.

The new vice president will receive between \$60,000 and \$70,000, Walker said.

"These kinds of people generally run about \$120,000 per year," Walker said. "I would like that kind of person that would generate \$10 million a year, but I don't have \$120,000 to pay them."

"Among the three (candidates) one is from Pennsylvania, one North Carolina, and one from an Ivy League New York school. One is

female and the other two are male" said Daniel F. Parker, vice president of A.T. Kearney, Inc., an Atlanta based firm conducting the search.

"No one that I know has applied from inside the (MTSU) organization," Walker said. "What I'm doing right now is my job and that vice president job as well. I'm filling all those responsibilities and meeting with the staff in that area. That position has, for all practical purposes, been vacant since July 1, and I will be very relieved to get someone."

"Although it's a new title, it's not a new position," he said. "The title was vice president for Administration. Some

responsibilities were moved and some were added. I think bringing those offices together is the right mix for the kinds of things that we want to do in the areas of Development and University

Relations."

"We contacted over 400 people and over 65 expressed interest. Due to Dr. Walker, as well as the growth and quality of MTSU, there was no shortage of candidates," Parker said.

"This university has grown by leaps and bounds," Walker said, "and we've reached the level where we've got to start thinking about how we do things and the kind of image we put out to the public. The time is right for us to really move in that area and to do the kinds of things that need to be done."

"I expect the person to provide the leadership, knowledge and skills necessary to make sure that we as a university continue to move forward," he said.

Walker said he is looking for a current assistant or associate

See **SEARCH**, page 2

Cheerleaders will go

SAM GANNON
Assistant News Editor

Middle Tennessee State's football cheerleaders will be able to travel to three of the school's five out-of-state games, a university administrator has said.

Dean of Students Paul Cantrell, who supervises the cheerleaders, said he was notified Monday afternoon about the matter.

The decision about the cheerleaders was left to MTSU President James Walker. "We

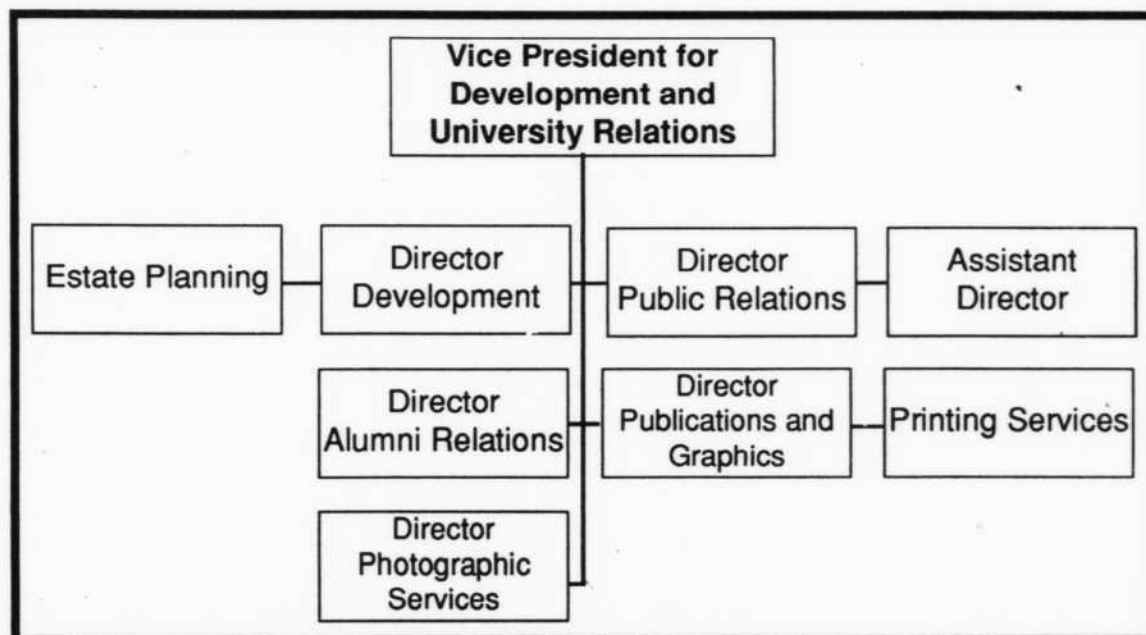
now have approval for three out-of-state games," Cantrell said.

Walker's decision came shortly after the University of Tennessee's first game last Thursday in which the school's cheerleaders did travel out-of-state. That may have set the tone for other state funded schools such as MTSU.

The games to be attended by the cheerleaders are close to be decided.

"We have Florida State

See **GO**, page 2



NEW CHAIN OF COMMAND: MTSU's administration chain-of-command will be adjusted when the vice president for Development and University Relations is selected.

Features-page 8

3 new art exhibits open at MTSU. Sidelines fine arts expert reviews them.

Sports-page 11

See why going 108 miles an hour isn't fast enough for one MTSU professor.

Open House Today!

Student publications invites you to attend our open house, between 3PM and 5PM today, in JUB 306, 308, 310. Come up and meet our staff. Light refreshments will be served.

Search

continued from page 1
vice president who "has been very successful at what they are doing and is now ready to move to the next level and run their own shop as a vice president."

Walker also said that "With luck I'll be able to keep him/her for five or six years until someone steals them away for about \$120,000 to \$130,000, if they are any good."

As far as the vice president position, research sources say that recent shifts in higher education administration normally pay close to \$100,000 for a position like that.

The big dollars and high tech requirements help justify using an outside company for a search such as this one, Walker said.

"It is becoming more common in searches at this level to find a company that will give you the expertise necessary to

Go

continued from page 1
University outside the conference, we have Eastern Kentucky University, and we get to choose between Western Kentucky University and Morehead State University," Cantrell said.

"I think they're excited,"

find the kind of person you really want," he said. "I'm using a search committee. The only thing I'm not cumbering the committee with is going out and reading and calling. They are doing the interviewing."

Research firms such as AT Kearney are "working well as a very productive method to find the right person to fit with the right job," he said.

"I've found it to be much more productive," he said, "but we do it very rarely. This is the second time we've used a search firm. MTSU previously used AT Kearney as a search firm for an MTSU Chair of (MGF?) Excellence."

Because of the success of the first search, the AT Kearney firm was recommended by the Chancellor and the Tennessee Board of Regents for considerations for the current search.

Cantrell said about the cheerleaders. "They seem to be really pleased."

The university student publications also will be able to travel to the out-of-state games so that the Midlander and Sidelines can provide coverage.

Decisions about other school-related out-of-state travel have not been made.

Brought to you by:



*Midway Ticket Discount Coupons must be redeemed on or before September 12, 1991.

Comedy and Cotton Candy. Music and Magic. Blue Ribbons and Big Tops. Where Else But...



Sept. 13 "Comedy Night," sponsored by Zanie's and WGEX ★ Sept. 13 - 22 Krystal and 106 WLAC-FM present the Racing Pigs ★ Music and Dancing at Hoot Owl Junction ★ Sept. 14 The Kraft Mayonnaise Great State Salad Bowl ★ Sept. 14 The Chevron Delo Big Rig 100 presented by WSM-AM 650 ★ Sept. 14 - 15 Ronald McDonald Show ★ Daily entertainment at the Kroger and Oldies 96 Family Pavilion ★ Sept. 14 - 15 Garfield's Magic Show ★ Sept. 16 - 20 Kevin King's Show of Comedy and Magic ★ The Pirates of the Caribbean High Dive Show ★ Sept. 16 - 22

Barnyard Follies' Robotic Animals ★ Sept. 17 WSM-AM 650 presents the Tennessee State Fair Championship Races ★ The Big Top Circus, brought to you by Pepsi and 98 W/SIX ★ Sept. 19 More racing sponsored by WSM-AM 650 ★ Livestock exhibits ★ Sept. 21 Late Beer and KDF present the State Fair Invitational Demolition Derby ★ Sept. 21 The Procter & Gamble / Dawn Scrub-off Dishwashing Contest ★ Arts and Crafts ★ Sept. 21 - 22 The Teenage Mutant Ninja Turtles, sponsored by WZTV FOX-17 ★ And much, much more.



The food. The fireworks. The ferris wheels. It's all here. Ten Days of Old-Fashioned Fun. At the all-new Tennessee State Fair.

Beginning with a sneak preview on "Family Night" — Thursday, September 12 presented by Nashville 95 WSM-FM. When you can ride all the rides you want for just \$7.95.

**TENNESSEE
STATE FAIR**
Sept. 13-22

Then, throughout the fair, get a 2-for-1 admission discount with special coupons from participating McDonald's. And save an additional \$3 on ride tickets with coupons available at area Jim Dandy Markets.

For more information or a complete schedule of events, call (615) 862-8980.

26 out of 26 nursing graduates pass national licensing exam

GREG ADKINS
Editor

All of Middle Tennessee State's nursing graduates passed the National Council Licensing Exam on their first attempt.

The 26-student class, which took the exam after graduating in May, is the second four-year class that has passed the boards on the first meeting. The class is the second four-year nursing class to graduate.

"We're very proud," said Mary Brewer, instructor of last semester's nursing students. "Everybody has contributed to the students' success."

"We have good leadership," Brewer said. "I don't see why we can't continue to succeed."

According to Brewer, the nursing department uses a continuous review of the teaching materials to ensure that students receive fresh, quality instruction. The department also follows a

strict set of guidelines set by the National League of Nurses.

"It's mainly because the students and the faculty worked hard," said Judith Wakim, chairman of the nursing department.

Wakim said there were only two years between 1982 and 1990 when the program did not have a 100 percent pass rate. Since the associate program began in 1968, there was one year when the program had a 87 percent passing rate. Every other year 90 percent or more have passed.

Nursing students take the exam after graduation to receive legal license to practice, Wakim said.

"I think it is an indication of the outstanding quality of our nursing program," said Robert Jones, associate vice president for Academic Affairs. "They are maintaining the standards set by the original two-year program."



Dane Henderson/Photographer

SIGNING PEOPLE UP: Jim Dayton (left) and Ronnie Dunnman work the Sigma Phi Epsilon table in the KUC. Tom Lee (standing) asks about the fraternity.

ARMS has opening meeting

ERIC WALKUP
Features Editor

The Association of Recording Management Students (ARMS) opened this year with a meeting that drew a standing room only crowd.

ARMS is a professionally run student organization intended for those majority in Recording Industry Management at MTSU. However, all majors are welcome to join.

This year's staff consists of President Che'vy Nash, Vice President Erin Edwards, Secretary Autumn Jessee, and Treasurer Kevin Lane.

ARMS's purpose is to give students a feel of what the music

industry is like, as well as making new friends and establishing valuable contacts in the music industry through monthly meetings and social activities.

ARM's agenda for this fall begins Sept. 29-30 with the TJ Martell Foundation Benefit for Leukemia, Cancer, and AIDS held in Nashville.

Tentative dates for the spring 1992 may include the National Association of Recording Merchandisers (NARM), and the famous country radio seminar in Nashville.

Membership dues for ARMS are \$5 a semester or \$7 for the whole year.

student organizations in carrying out our various activities that affect the student body," Burgess said. "These activities include the Mr/Mrs MTSU pageants, state and local conferences and student scholarships to name a few."

To vote on these issues, students should go to the Keathley University Center from 8:30 a.m. to 4:30 p.m. or Peck Hall from 8:30 a.m. to 6:15 p.m.

湖南Hunan南
CHINESE RESTAURANT
OPEN TUESDAY - SUNDAY
- FEATURING -
Hunan-Szechuan-Mandarin
Cantonese Cuisine
VISA - MasterCard - AMX.
Dine In Or Take Out.
893-7008
24 & HWY 231
EXIT 81 B
2112 S CHURCH S

Students vote on name change

On Wednesday students will vote on changing the name of the Associated Student Body to Student Government Association (SGA).

The main reason for changing the name is that Middle Tennessee State University is the only school in the state Board of Regents that calls the student government ASB instead of SGA.

"Many freshman and new students don't associate the name ASB with the student government," said Shawn Burgess, ASB president.

Changing the name would increase student participation, he said, because they would clearly know where to bring their problems and ideas.

Students will also be voting to keep the ASB activity fee.

"These funds are essential to

SOUND SHOP

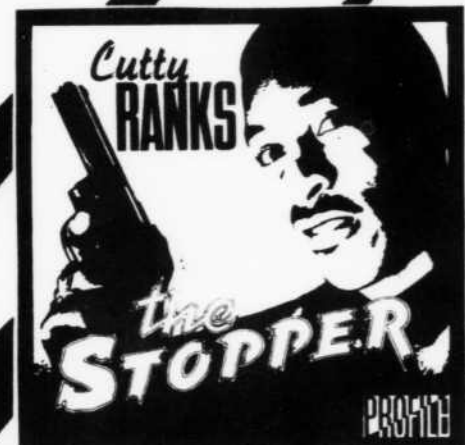
Cassettes, Compact Discs & Accessories

Jackson Heights Plaza 893-1860

**POOR RIGHTEOUS
TEACHERS** PURE
POVERTY



Poor Righteous Teachers



Cutty Ranks



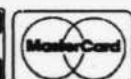
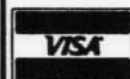
Nemesis

D J QUIK
QUIK IS THE NAME



DJ Quik

Specially
Priced!



Ask About
Our One Year Tape Guarantee!



Campus Capsule

The **Middle Tennessee Women's Studies Association** is having its first meeting of the year Sept. 21 at the Mental Retardation Lab in the Kennedy Center, Room 241 on the George Peabody College campus of Vanderbilt University. The meeting will begin at 9:30 a.m. with coffee and refreshments. The topic for the meeting is "Working the network — MTWSA's Resources as Women."

Weather permitting the **MTSU Observatory** will be open to the public from 8-10 p.m. Sept. 17.

An organizational meeting for the **College Democrats**

will be held at 2:30 p.m., Sept. 18, Peck Hall Room 227. Agenda will include setting a date for the election of officers.

Executives of **Japanese** companies in the Middle Tennessee area will discuss **management styles** at MTSU Sept. 26 at a seminar entitled "Management Styles of Japanese-Owned Companies in Middle Tennessee," which is jointly sponsored by the Jennings A. Jones Chair of Excellence in Free Enterprise and the Middle Tennessee Japan Club. The seminar begins at 2:45 p.m. and is free and open to the public. For more information, contact Earl

Thomas at 898-2880 or Kiyoshi Kawahito at 898-5751.

Pi Sigma Epsilon will hold an interest meeting today (Sept. 12) at 7 p.m. in KUC 318 and an orientation for prospective members on Thursday, Sept. 19 at 7 p.m. in KUC 322. Pi Sigma Epsilon is the national professional fraternity for marketing, sales and sales management. PSE is open to all majors with an interest in professional contacts, experience and success.

Hosts and crew members are needed for a new entertainment show on MTSU TV-12. Auditions will be held today (Sept. 12)

from 8-10 p.m. in the LRC Studio B.

Student organizations desiring to make application for **Activity Fee Funds** for the fall semester should secure application forms from KUC Room 126. The deadline for completing and submitting the forms is at 4:30 p.m. Friday, Sept. 13. Forms are available in KUC Room 126 and must be turned in to the Dean of Students Office by the deadline.

Donald Ratjczak, director of the **Economic Forecasting Center** at Georgia State University will make the keynote address at a conference on economic outlook at MTSU on Sept. 19 at 9 a.m. A panel discussion entitled "**Tennessee and the Mid-State Economy**" will follow Ratjczak's address. Registration is \$10 to cover the cost of lunch. Reservations should be made before Sept. 13. For more information, contact Earl Thomas, chair coordinator, at 898-2880, or Barbara Haskew, dean of the college of business, at 898-2764, or Kyle at 898-2610.

Faculty reception for all students and faculty in the journalism and radio/tv/photography departments on Tuesday, Sept. 17, from 3:15 to 4:15 p.m. in the second floor lounge area at the front of the new Mass Communications Building. Refreshments will be served. All majors and faculty are invited. For more information, call Dr. Glenn Himebaugh at 898-2205.

The Fall Honors Lecture Series features Jill Hague of the English department speaking on "Intuition and Creativity" at 3:30 Sept. 16. The fall program is a series of interdisciplinary seminars about creation and discovery. The lecture will be given in Peck Hall 107.

If you enjoy playing soccer, join **MTSU's Soccer Club**. Practice is held at 6 p.m. every day behind Family Student Housing. There's a good chance you can become a member of the varsity club team. For more information call Marvin Carson at 898-3039 or Fred Long at 898-3237.

Start your career in broadcasting. Any student interested in becoming the

The **Society of Professional Journalists** will host a "Meet the New

See **CAMPUS**, page 5



In Concert PHIL KEAGGY and Special Guests

Friday, Sept. 20 - 7:30 P.M.
WORLD OUTREACH CHURCH
1291 Highway 99 West
Murfreesboro, Tennessee 37129
Tickets available from Church Office or local
Christian Bookstores

\$5.00 in advance
\$6.00 at the door

for more Information Contact 896-4515

**MURFREESBORO
OPTICAL DISPENSARY**



MOD
THE BEST IN SIGHT

Recommended By
Eye Physicians
Since 1968

**Prescription Eyeglasses
And Sunglasses For
Every Budget And Lifestyle**

Repairs and Replacements • Quality Products
• Designer Frames • Custom Tints
• Sports & Safety Glasses • Dependable Service
• 2 Locations M-F 8a.m. - 5p.m.

702 East Clark Blvd. 1004 N. Highland
Murfreesboro M'boro Medical Clinic
896-2725 890-6061

Serving "MTSU" Students, Faculty
and Staff since "1968"

20% Off When Purchasing A Complete
Pair Of Eyeglasses Or Contact Lenses
"MTSU" Identification Required



**NEED SOME EXTRA
SPENDING MONEY?
PART-TIME POSITIONS
AVAILABLE.**

Who: Hardworking, Honest College Students
What: Control Desk Operator, Concourse
Waitress

When: Apply Mon., Wed., Fri. Noon to 3:00PM
or by appointment

Where: Murfreesboro Bowling Lanes
941 N.W. Broad Street

Contact: Doug Partick, Manager

DON'T WAIT, APPLY TODAY.....

Campus

continued from page 5
game announcer for the **Blue Raider baseball team**, contact assistant coach Ronnie Vaughn at 898-2961.

The **Seventh Day Adventist** fellowship welcomes students to campus and invites anyone interested in seeking a well rounded education that provides not only spiritual needs but also health needs, to contact call the fellowship president Eugene Rankins at 898-3924 (work) or 890-7452 (home) or Frank Michello at 898-2491 (work) or 898-3896 (home). Outreach activities will be based on health principles, diet and natural remedies.

MTSU Dance Club will meet Tuesdays from 6:40-9:30 p.m. in Dance Studio A in Murphy Center. Jazz artist Lisa Lewis will direct the club. No former experience is necessary to participate.

YWCA is sponsoring a support group for women of color. The group will deal with domestic violence problems. The group meets on Thursdays at 6 p.m. For more information call 297-8833. Meetings are confidential.

Intervarsity Christian Fellowship would like you to join us Thursdays, 5:30 p.m. at KUC 313.

The Associated Student Body would like to announce the **MTSU 1991 Homecoming Parade** to be held Oct. 26 at 9 a.m. Any groups or organizations who are interested in participating in the parade Should come by the ASB office in the KUC, room 304 to pick up entry forms. For more information, call 898-2464.

Murfreesboro needs adult volunteers to serve as **Girl Scout troop leaders**. Free training is available to

adults interested in sharing their time and talents with Girl Scouts. For more information, call 890-2451.

You can prevent child abuse! **Parents Anonymous of Tennessee**, a statewide non-profit child abuse prevention agency, is seeking volunteers for the Parent Pathway program and the Parent Helpline. A Parent Pathway volunteer

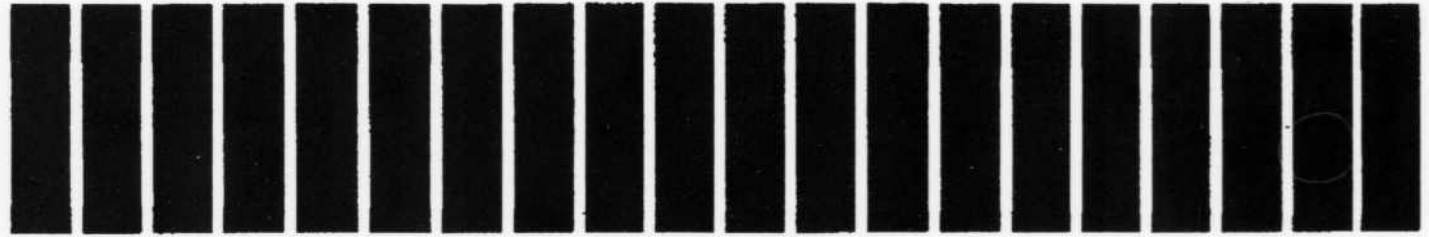
assists parents of newborns, by offering emotional support, discussing infant care and development, modeling parenting skills, and linking the family with community resources. The Parent Helping is a 24-hour toll free support line for parents under stress. Volunteers answer the line in their own homes. Volunteer training will be held in the fall. For an

application of further information, call Lee Anne Sharp at 227-2273.

Campus Capsule is a service provided by *Sidelines* for non-profit campus groups. If you have a notice that you would like to run in **Campus Capsule**, please submit typewritten or printed information to our office in the James Union

Building, Room 310. Items must be received by Tuesday at noon for Wednesday's publication and noon Friday for Monday's publication. Inclusion is not guaranteed and is based on available space.

**Got a news tip?
Call 2815**



DELTS

MTSU'S NEW FRATERNITY

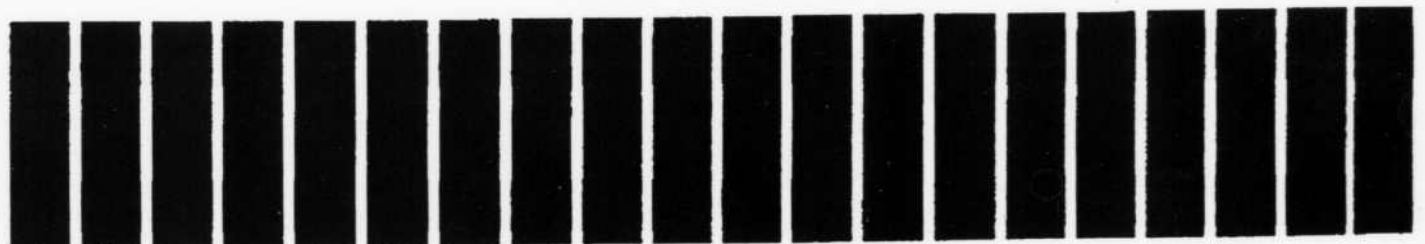
Founders are rare individuals. That's what we want at Delta Tau Delta. Delts are the new fraternity at Middle Tennessee State University. The uniqueness of starting from scratch allows many opportunities for the members that choose to join. The Founders will jump right in and establish a firm foundation for the group. Delts will determine the new traditions, different attitudes, and a fresh image that will be so much a part of the group.

Delt Founders will be new faces, new leadership, new traditions, and a new style which will benefit the entire MTSU Community.

**SEE US AT THE
K.U.C. STARTING
MONDAY,
SEPTEMBER 23, 1991**

**We're
Looking For
Founders.**

ΔΤΔ



Opinions

Consensus

Smoking policy all bark, no bite

Is the university serious about their new smoking policy or are they just blowing smoke?

The policy, which was approved last month, bans smoking in most university buildings except in designated areas. These areas include all first floor bathrooms and private offices with department approval.

One needs only to walk through Peck Hall to realize that the new policy has had no effect. The reason for this is simple—very few smokers are aware of the change, and those who are aware of it don't seem to be concerned about it.

Any policy enacted without notification is meaningless. Unless people are informed, change will not occur. Posted notices and "No Smoking" signs in the affected areas are necessary if the new policy is going to succeed.

Any regulation without enforcement is powerless. What will be the consequences of non-compliance? Who will enforce the policy? Will it be left up to the individual student to report those who do not smoke by the rules?

The result of the policy's weak implementation is predictable. With the lack of information and enforcement, the new rule is viewed as little more than a well-intentioned "please don't" and is being treated as such.

Whether you believe the policy is right or wrong, you expect consistency from the school. Smokers need to know about the guidelines and non-smokers deserve for the rule to be followed.

As it stands, the new policy is similar to tossing a thimble-full of water on a raging fire - it's a nice gesture, but it's simply not enough and only creates more smoke.

MTSU's News Editor



"I THINK THE QUESTION, REALLY, IS 'WHICH POTENTIAL DEMOCRATIC CANDIDATES ARE NOT RUNNING?'"

Letters to the Editor

Traditional student strikes back

Dear Miss Greenbank,

I found your column in Sidelines both offensive and frightening. To begin with, your references to traditional students are demeaning and erroneous. I, like many of my friends, share the cost for college with my parents or pay for it myself. I'm sure you'll find that more than one or two shop at Wal-Mart on occasion, BECAUSE WE CAN'T AFFORD TO GO MALL-HOPPING. The liquor store comment is unnecessary and shows your obvious prejudice against people under the age of 50 having the right to consume.

Now to the frightening part. You are picking out a group of students (18-23) and treating them as if they were children. Many of those you see sleeping in class are doing so because your wonderful federal government has cut their financial aid forcing them to work nights. This idea of further taxing college students is ludicrous. What you support, Miss Greenbank, is against the Constitution. Singling out one group of America's population and forcing them to submit to higher taxation simply because they are college students is against everything our boys (mostly college age males) went to Saudi Arabia for. Your "pleasure policy" smacks of high school teachers' regulation. C'mon dude, like give us a

chance to ride some really gnarly waves before we have to ride a steady job. I don't want "Mom" watching over me again. By the way, for those "non-traditionals" who don't understand my "collegese," it means, "Let me have some fun while I'm still young."

Traditional and proud of it,
Chris Trout
Box 8240

Non-smokers targets of discrimination?

Dear Editor,

At last, students and faculty will be able to breathe fresh air, enjoy a cleaner campus and perhaps face a reduced risk of fire on campus. That is, these privileges were officially realized on Aug. 12 when President Walker signed MTSU's new smoking policy.

Many students, myself included, applaud the long awaited change in policy. Nevertheless, the policy contains a serious omission concerning smoking in the grill and in other campus eateries. For these locales, the policy specifically reads, "Smoking areas may be designated in the grill and cafeterias by the managers of those facilities."

Anyone who visits the grill soon discovers that smoking is very much permitted. There is a no-smoking section, but it is relatively small and inconveniently located away from

the food line. Okay, I realize that this is a crazy suggestion, but why not create a smoking section for a predominantly smoke-free grill? The current policy favors a smoke-free area in a smoke infested grill.

How is it that the grill's smoking policy can be biased towards the minority of students who choose to smoke? While smoking is not as common at the university's other cafeterias, the habit is still encouraged. Each cafeteria sets aside a non-smoking area, but once again it is relatively small and inconveniently located.

Regretfully, a morbid analogy can be made in comparing MTSU's cafeterias with apartheid in South Africa. That is, a minority group in each society has been successful in suppressing the rights of the majority. No, I am not suggesting economic sanctions against the university's dining service, just a simple and long over due change in policy.

D. Scott Weaver
P.O. Box 3235

SIDELINES

STAFF

Greg Adkins-Editor-in-Chief

Terry Massey-Managing Editor

Rick Jennings-News Editor

Sam Gannon-Asst. News Editor

Eric Walkup-Features Editor

Tony J. Arnold-Sports Editor

Dianne DeOliveira-Asst. Sports Editor

Shelley Mays-Chief Photographer

Barbara Klemm-Copy Editor

Andy Bostaph-Production Editor

Amy Adkins-Advertising Manager

Jenny Tenpenny Crouch

Student Publications Coordinator

Opinion Page Policy

Unsigned editorials represent the viewpoint of the paper's editorial staff, while signed columns reflect the views of the author. All letters to the editor must be accompanied by the author's name, campus address and phone number. The author's identification will be verified, and unsigned letters will not be printed. Editors reserve the right to edit for libel, news style and length. Address letters to: **Sidelines, Box 42, MTSU, Murfreesboro, Tenn. 37130.**

GOT AN OPINION?

Write a letter
to the editor:
Box 42
MTSU.

Brothers gonna work it out

Incident at 'the sub' highlights the need for black unity

The other day, I read a most unnerving article in *Jet* magazine.

It commemorated the 50th birthday of Chicago native Emmett Till and the naming of a street in his honor. Well, like any occasion in which a street is named after a Negro, there has to be a totally devastating reason behind such an endeavor. And there is.

In 1955, at the tender age of 14, Emmett Till was lynched and murdered in Mississippi for whistling at a white woman. But "lynched" and "murdered" don't give nearly enough justice to a crime of such extreme grotesqueness. Let me enlighten you.

Reports state that Till's nude body was found in the Tallahatchie River with a 200-pound iron-gin-mill fan wired around his neck and a bullet hole one inch above his right ear. And if these events weren't enough to ensure his death, the autopsy revealed severe beating. The left side of his face was crushed to the bone.

As one newspaper editor described, the killing was



Total
Eclipse

LUCAS
JOHNSON II

"nauseating and way, way beyond the bounds of human decency."

Unfortunately, the judiciary system at the time didn't share the same sentiment. The three white men convicted of the crime were found not guilty by an all-white, all-male Mississippi jury.

After the reading of that verdict, if there was any nausea to be felt, it was that of Till's mother and his family. Not only had they lost a loved one, but the black's in the courtroom that day had once again lost to discrimination. And the devious grins of the whites as they left the courtroom, their mouths' dripping with the saliva of hate, only made matters worse. They had cinched another victory.

I must say the Till article left me with an angry feeling. But I grew even angrier when I stumbled upon another article that dealt with black actor Wesley

Snipes (best known for his leading roles in the movies *Jungle Fever* and *New Jack City*).

The article mentions that while shooting his soon-to-be-released film *The Waterdance*, Snipes was manhandled by Los Angeles police (not because he was with a white woman as you recall from the movie *Jungle Fever*) but because he was suspected of driving a stolen car.

The fact is, the rental company from which Snipes rented the car had made a mistake. Despite numerous third party attempts to explain the error, the article said Snipes was handcuffed to a bench and held for hours at the station.

"Everybody was coming out looking at me like a monkey in a cage," the article describes Snipes saying. "Walking past me smiling and snickering and shaking their heads like, 'Umph, umph, umph. You see that. A nigger is a nigger. You know you can't give the niggers nothing. He's gonna steal a car and he makes movies.'"

By this time I was steaming. Till and Snipes, though they were

from different eras, they had both been the butts of racial discrimination, the same discrimination that is presently breaking up the foundation of Affirmative Action and other civil foundations our forefathers slaved so tediously to lay. Like Till was beat down, I wanted to scream out the word racism, and beat down all those bigoted die-hards who continue to make a bad name for their race. But, after the incident that took place later that night at a party in the James Union Building (SUB) here on MTSU's campus, my anger quickly dissipated to shame.

The incident was a fight between two all-black organizations. This time, I became nauseated. I couldn't yell out racism. I couldn't denounce

the establishment, because that fight had once again proven what racists have reverberated about the black man, and that is, he's yet to get along with his brother.

Then the stories I had read took on new meanings. I thought about how insane it must be for a thousand Tills' to die each day at the hands of their own brothers. They don't have to lynch us, we're lynching each other. And like the Snipes story, they pass by us and laugh, knowing that if we stay at each others throats we're never going to progress.

But that can change. I have faith. We can wipe away those smiles and secure our existence by coming together. We have to. Because if we don't, we'll all end up like our dear brother Emmett Till, at the bottom of the river.

You're never too old
to quit blowing smoke.

AMERICAN
CANCER
SOCIETY

Special Events Committee presents

The Recycler Tour does MTSU !!!



ZZ TOP! BOOGIE!!

Murphy Center September 18, 8 pm
All tickets reserved at \$20.00.

Good reserved theater seats
still available
at both MTSU Ticket Offices.

MTSU students receive one dollar discount
on first two tickets with valid ID.

Special Events Committee presents

W.W.F.
CHAMPIONSHIP
WRESTLING

Saturday, November 9, 1991
Murphy Center 8:00 p.m.

TICKETS GO ON SALE
MONDAY SEPTEMBER 16 10 AM
Tickets - \$13.00, \$11.00, and \$9.00

INFORMATION - 898-2551
MAC Athletic Ticket Office or
Concert Ticket Office, KUC #308

ONLY
THE LONELY



K.U.C. THEATER

LAST SHOWINGS TONIGHT
6:30 p.m. and 9:00 p.m.
Admission - \$2.00

Next Week - September 17/18/19
"CITY SLICKERS"
Admission always \$2.00.

INFORMATION - 898-2551

Features

MTSU art exhibits have busy week

This has been a very busy week. Three art exhibits all happening here at MTSU. As I was "making the rounds" I was thinking about what to expect. After being involved in the fine arts for seventeen years and studying the art works at galleries all over the world, I have become rather jaded. Now it seems like I crave the new, the innovative, the daring, and that seems to be

GARRY ESTEP Art Review

getting more and more difficult to find.

Needless to say, I was delighted that the MTSU Art Department has brought in works by two of their former students, and these artists have chosen to display work that dares to be different, each in its own way. If

Vincent Buwalda and Wayne White are examples of the kind of artists our school is producing, the School of Art is to be commended for a fine job of teaching not only technique but creative artistic thought.

Vincent Buwalda has an exhibit of one canvas and six sculptures in the CUBE Gallery in Keathley University Center (across from the grill). The first

piece I noticed was the canvas titled "Artsy Fartsy". For those of you who don't know, 'artsy fartsy' is a term which is used to describe things or people who are stuck in stuffy, closed-minded artistic thought, and tend to be rather pretentious about it. Mr. Buwalda is definitely poking fun at these people and things, as well as anyone should.

When you first look at his sculptures you can't help but notice that they required a lot of work and imagination. And then the electricity comes on! Literally! Mr. Buwalda has included small electric motors in some of his sculptures which animate the pieces in various interesting ways.

Buwalda says the works are semi-autobiographical. The nervous movement of a leg, seen through the movement of a foot; the bored tapping of fingers. One piece has one arm turning a wheel and another arm waving a hand. This seems to be the general idea many people have about art (including many so called artists): that you turn on the motor and art

magically comes out.

One of my favorite pieces is static (non-motorized). It portrays a locked book with the keys inside. If you want to open the book you need the key, but to get the key you need to open the book. Mr. Buwalda says that this portrays "read knowledge and the power it has". I cannot think of a more appropriate place to have this sculpture than a university. After all, knowledge really is no good if it is locked up, even if it's trapped inside somebody's head.

Vincent Buwalda presents a very interesting exhibit both visually and conceptually. He pokes fun at intellectual snobbery and artistic ignorance. And if you really don't want to think, the works are fun to look at.

Mr. Buwalda's work will be on display through September 27. The CUBE Gallery is open from 8:00 a.m. until 10:00 p.m.

At the Art Barn Gallery you will find the work of Wayne White, three time Emmy award winner for his production work on

See ART, page 9



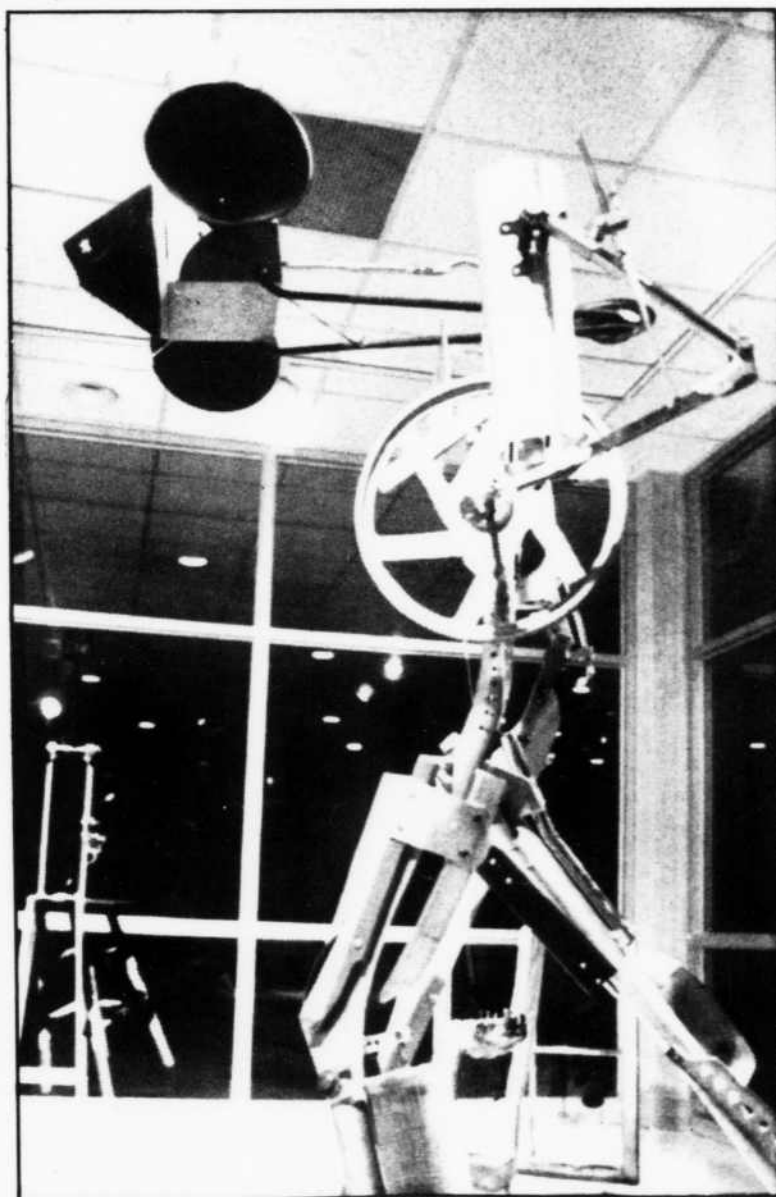
Shelley Mays/Photographer

'NO' CAMPAIGN SUPPORTERS: This photo taken by Alejandro Hoppe is part of a collection of photographs taken by Chilean photographers on display in the LRC.



Shelley Mays/Photographer

PEE WEE'S PLAYHOUSE: Wayne White, designer of sets for Pee Wee Herman, has several pieces on display in the Art Barn Gallery.



Shelley Mays/Photographer

MACHINE ART: Vincent Buwalda has seven pieces on display in the Cube located outside the Grill on the second floor of the KUC.

Art

continued from page 8

"Pee-Wee's Playhouse", and winner of the Best Art Director award for the music video "Big Time".

I am (still) a fan of Pee-Wee Herman, and having seen his show quite a few times I had to wonder what Mr. White would put on display. When I arrived at the gallery Mr. White was speaking with a group of art students and showing them some of his sketch books. I managed to get close enough to peek over someone's shoulder and saw drawings that stagger the imagination. From surreal to minimalist.

But the real treat was hanging on the walls - some of the most stunning paintings I have seen in a long time. Representing various historical events, the paintings are done in either an impressionist or a "neo-Italian Renaissance" style for the most part.

Not making a connection between the drawings and the paintings, I asked Mr. White about them. He explained to me that he began the paintings as an "exercise in discipline" to see if he was still able to produce works of subject matter he dearly loves in the style of Titian (and other great painters of large works) and also the style of the 19th century landscape artists. Not only does Wayne White have the discipline to produce this sort of work, he is able to do it in grand style.

Mr. White's works range from dark and creepy (in "Swamp") to bright and bold (in

"Lookout Mountain"). The paintings not only graphically portray historic events, they reach out and make you feel something, from the exultation of "Young Washington's Dream" to the mystery of "Messenger."

This critic strongly recommends that you take the time to see these works. The Art Barn Gallery is open from 8:00 a.m. to 4:30 p.m. Monday through Friday, 10:30 to 12:30 a.m. Saturday and 1:00 to 4:00 p.m. on Sunday. For further information about either Wayne White or Vince Buwalda, call the Art Department at 898-2455.

The third exhibit on campus, at the Learning Resource Center's Photo Gallery, is a collection of photographs by Chilean photographers entitled "Chile From Within." The photographs span the years 1973-1988, or from the time Gen. Augusto Pinochet began his authoritarian dictatorship until popular elections for a president were scheduled.

"Chile From Within" is a very powerful exhibit giving an insider's view of what life is like in a military dictatorship. The photos portray scenes ranging from everyday life and people to graphic portrayals of the results of inhumane treatment by the authorities. It is very chilling to look at a picture of someone being arrested by the authorities and to be able to tell from the picture that they will not come back.

Within the display are several explanatory panels to help guide you through the exhibit.

One of them says "Most of these photos were taken in defiance of the danger which has become our way of life." Civil rights abuses, fear, tyranny and danger. All of these can be seen in the display. It makes you wonder at the ability of these people to survive what to us seems like hell on earth.

Go and see "Chile From Within." Take your time and think about what you are seeing. If it horrifies you-that's OK. If it makes you angry-that's even better. Try to imagine being there. And think about the people who were there. Maybe you will come out a bit more humble and a bit more appreciative of what you have.

MTSU student prepares for stressful job

Air traffic controlling is a stressful job demanding time, training, and dedication. MTSU student Brian Paysinger is preparing to meet the challenges of this difficult job he plans to make his career.

The aerospace administration major is a cooperative education student with the Federal Aviation Administration at the Air Traffic Control Center in Hampton, Ga. He has earned class credit and a salary for the past three summers when he has attended classes designed to prepare students

See MTSU, page 10

Nashville sculptor will address art educators

Alan LeQuire, sculptor of the 'Athena' in Nashville's Parthenon, will address art education teachers from across the Mid-South at a conference Sept. 27 and 28 at Middle Tennessee State University. The conference will include a trip to Centennial Park to view the colossal work which took nearly a decade to complete.

The conference, "Sense and Substance: Teaching in the Content Areas," is sponsored by the Tennessee Arts Commission and MTSU's Department of Art and will be held in the Keathley University Center.

Speakers, topics and times will include:

-Al Hurwitz, chair emeritus of the Department of Art Education at the Maryland Institute College of Art in Baltimore—"Methods Courses: Education's Perennial Whipping Person," 9:00 a.m.

-Eldon Katter, professor of art education at Kutztown University, "Global Perspectives and the Content Areas," 10:30 a.m.

Lunch follows at 11:45 a.m.

-Anne Lindsey, who heads the Southeast Institute for Education in the Visual Arts at the University of Tennessee at Chattanooga, "Exploring Approaches to the Practice of

Discipline Based Art Education," 1:15 p.m.

-MTSU associate professor of art Charles Jansen, "Diagrammatic Strategies for Exploring Art History," 2:15 p.m.

-Karen Hamblen, professor of art education in the Department of Curriculum and Instruction at Louisiana State University, "Art Criticism: Critical Thinking and Questioning Strategies," 3:30 p.m.

-Hurwitz returns with "Methods Courses: Moving Forward" at 4:30 p.m.

LeQuire's lecture will follow dinner in the James Union Building.

There will be a workshop for the teachers from 8:30 to 11:45 on Saturday morning dealing with strategies and content areas. The group will make the trip to the Parthenon in Nashville Saturday. The round trip bus fare is \$15.

No registration is required for Tennessee teachers, but a \$16 meal fee is required. Registration for out-of-state teachers is \$50, which includes meals. Registration must be mailed by September 20 to Box 25, Middle Tennessee State University, Murfreesboro, Tennessee 37132. For more information on the conference, contact conference coordinator Lon Nuell at (615) 898-2505.

527 MAINSTREET

Wednesday Sept.

11

Tall Paul

Thursday Sept. 12

Crash Dummies

Friday Sept. 13

Autumn

Saturday Sept 14.

Autumn

Firestone
COMPU CARE
AUTO DIAGNOSTIC
CENTERS
1740 NW Broad St
895-8380

**ENGINE
TUNE-UP**

In most electronic ignition cars, we'll install new resistor spark plugs, adjust idle speed, set timing, test battery and charging systems, and inspect other key ignition parts. **4cyl**

\$39⁹⁵

LUBE, OIL & FILTER Chassis lube
Up to 5qt of oil
New Firestone oil filter

\$16⁹⁵

With engine cleaner **\$24⁹⁵**

-Tires
-Fuel Injection
-Computer
-Systems
-Valve Jobs
-Tune ups
-Suspension
-Charging
-Filters
-Brakes

University Savings Card
honored here!

You Can Place Your Trust In Us



Blake and Lee Tidwell
Lisa Tidwell Halliburton
-Certified Gemologist
Greg Tidwell
-Graduate Gemologist

Bell
FINE JEWELERS

SINCE 1879
DIAMONDS

"LARGE SELECTION TO CHOOSE FROM"

Watch-Jewelry & Engraving
Repairman On Premises

893-9162

OPEN 9 AM - 6 PM MON-FRI
9 AM - 5 PM SAT



8 North Side Square
Murfreesboro, TN

Present This Coupon
And Receive

***20%** Off Your Next Purchase

*COUPON NOT VALID ON SALE ITEMS OR CLASS RINGS

MTSU

continued from page 9
for the FAA Academy's extensive curriculum.

The 20-year-old was accepted into the program after MTSU teachers and fellow students encouraged him to take the entrance exam administered each semester on the university's campus.

**UNIVERSITY PACKAGE
LIQUORS**

Check out the competitive prices on name brands
Students Welcome
We accept cash, checks and now
M/C & Visa
Located at 1008-C N TN Blvd
(Right behind The Boro Bar & Grill)
(615) 895-4434.

PLEASE DRINK RESPONSIBLY

"Most of our time is spent in class on simulators and in lab training. We're not working with live traffic yet," said the Pulaski native.

"The training is invaluable. It's a great advantage to have three semesters of training. I'll be much more prepared, and that's what makes it all worthwhile" continued the MTSU senior.

Along with the experience he is receiving, Paysinger considers the best parts of his job to be living in Atlanta and getting to observe the everyday operations of the Atlanta Center Airport.

"More traffic is handled through Atlanta Center than anywhere else. It takes your breath away to think of all the people involved. It's pretty intense," said Paysinger.

The MTSU student expects to completely finish his co-op program next summer.

Akron senior gets singer's apartment

Erika Aldan, a senior at the University of Akron, just wanted to meet the band. She didn't expect to walk away with the lead singer's house, too.

Aldan sent one postcard to an MTV contest that was giving away Guns-N-Roses lead singer Axl Rose's West Hollywood condo, estimated to be worth about \$425,000. The odds of winning were 400,000-to-1.

"They called me a few weeks ago and I wasn't sure what to think," said Aldan, a mass communications major. "I was just amazed. The main reason I entered the contest was to meet the band."

University Park

Regular rent: \$325 for a 12 month lease.
Student Special: **\$310.00** for a 12 month lease.
1/2 price in June and July of 1992
Semester Rate Special: **\$1200** per semester
\$100 OFF first month's rent
FREE basic cable and HBO!!

Monthly social gatherings with food and refreshments for our tenants !!!
902 Greenland Drive 893-1500

Campus Paperback Bestsellers

1. *You Just Don't Understand*, by Deborah Tannen. (Ballantine, \$10.00.) How men and women can understand each other better.
2. *Seven Habits of Highly Effective People*, by Steven R. Covey. (Fireside, \$9.95.) Guide to personal fulfillment.
3. *The Burden of Proof*, by Scott Turow. (Warner, \$5.95.) A lawyer tries to solve the mystery of his wife's death.
4. *The Revenge of the Baby-Sat*, by Bill Watterson. (Andrews & McMeel, \$5.95.) More cartoons.
5. *Rand McNally Road Atlas*. (Rand McNally, \$7.95.) 1991 edition of a guide to the U.S., Canada and Mexico.
6. *Where the Wild Things are*, by Maurice Sendak. (HarperCollins, \$4.95.) Max's dreams take him to a place where he becomes king.
7. *The Joy Luck Club*, by Amy Tan. (Ivy, \$5.95.) Destinies of Chinese immigrant women and their Chinese-American daughters.
8. *September*, by Rosamunde Pilcher. (St. Martin's Press, \$5.99.) A group of guests from all over the world meet in a Scottish town.
9. *The Education of Little Tree*, by Forrest Carter. (Univ. of New Mexico, \$10.95.) Growing up with the Cherokee way of life.
10. *The First Man in Rome*, by Colleen McCullough. (Avon, \$6.95.) Towering saga of a remarkable era.

Compiled by The University of Akron from information supplied by college stores throughout the country, August 11, 1991.

New & Recommended

A personal selection of Suzanne Steadach, UConn Co-op Store, CT

The Conquest of Paradise, by Kirkpatrick Sale. (Plume, \$12.95.) The story of Christopher Columbus - his time, his exploits, and his legacy.

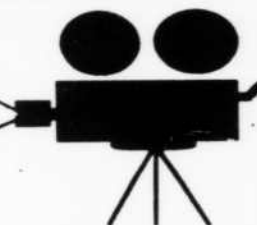
In a German Pension, by Katherine Mansfield. (Bantam, \$3.50.) A collection of short stories that evokes pre-World War I Europe with sharp wit and haunting psychological intensity.

The General in his Labyrinth, by Gabriel Garcia Marquez. (Penguin, \$9.95.) Portrait of the great Simon Bolivar - the liberator, the orchestrator of political and military intrigue, the fighter capable of heroism, mercy, and ruthlessness.

ASSOCIATION OF AMERICAN PUBLISHERS/NATIONAL ASSOCIATION OF COLLEGE STORES

**OPEN
24 HOURS
7 DAYS A WEEK
611 W. College
Murfreesboro
895-3610**

THE MOVIE SHOP



Free Membership

"THE NIGHTMARE'S OVER!"

Pay your respects to *Freddy* on
Friday the 13th at Stones River Six
behind Wal-Mart.

NIGHTMARE ON ELM ST.

Last 20 minutes of the movie is in 3-D.

Special late shows for Friday and
Saturday night for all movies.

Sports

Ricketts and racing Raiders roll MTSU sets world's land speed record for hydrogen

SCOTT HASSLER
Sports Writer

Last month in Wendover, Utah, at the Bonneville National Speed Trials, a Middle Tennessee State University group set a world's land speed record.

A 1973 Chevrolet pickup truck with a 350 cubic inch V-8 hydrogen fueled engine ran the course at a speed of 108.157 mph.

Dr. Cliff Ricketts, who is an MTSU associate professor of agriculture, graduate assistant Terry Young, and a team of former MTSU students combined to set the record pace.

For Ricketts it was a dream come true.

"Everybody has a dream to set a world's record, to be the best at something," Ricketts said. "I knew if I had a shot at the world's record, I'd better go for it now."

The record was not an easy accomplishment, though.

After 12 years of research and trials, the hydrogen fueled engine became a reality. For Ricketts the challenge reminded him of those faced in the

classroom each day.

"In academics, you do research and turn in a paper," he said. "I view the race as me turning in a research paper."

The people at Bonneville gave Ricketts a resounding A+. Ricketts added, "Actually the race was just the icing on the cake of the work we've been doing here (at MTSU)."

The race wasn't just all work and no play for Ricketts. As he said with a smile, "Quite frankly, even though we won the time and the race, I just wanted to blow everybody away."

And that they did.

The nearest competitor to MTSU was 22 miles behind. As if that wasn't bad enough, the MTSU truck that won was the second best vehicle available.

"Our premier vehicle running on 100 percent hydrogen fuel broke down in warmups. So we had to go with the ethanol-hydrogen mix in the truck," he said.

After the performance at Bonneville, second place seems

to be good enough, but not for Ricketts.

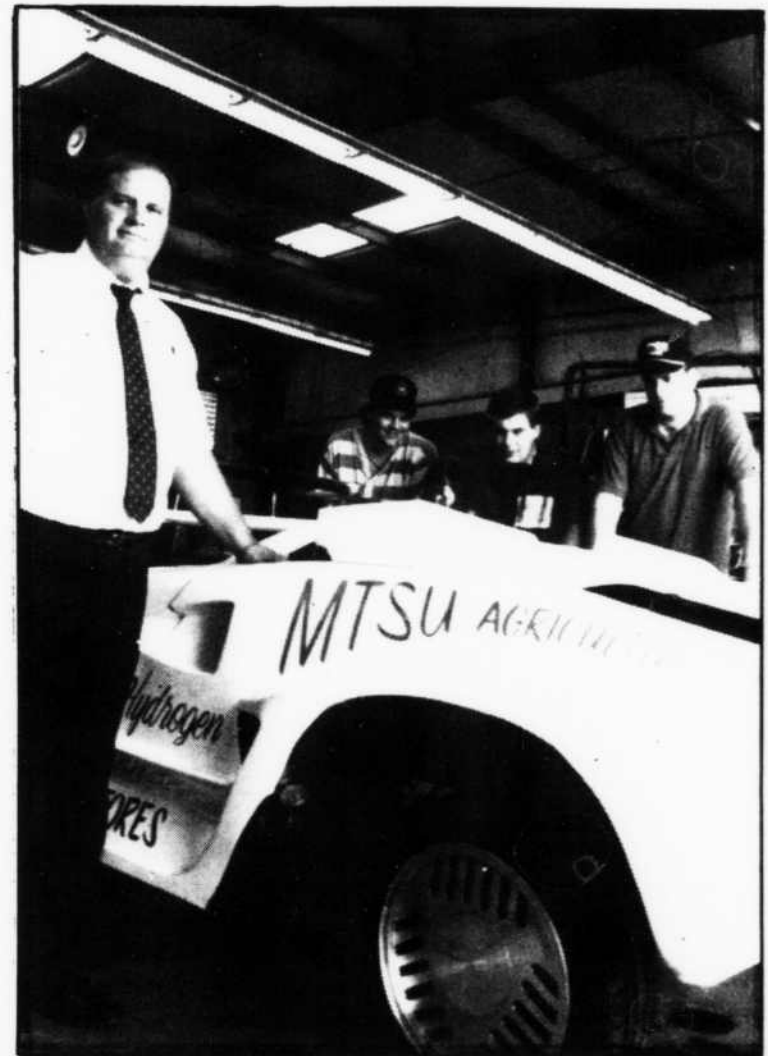
"I still want to turn 140 or 150 mph with our premier vehicle, and we'll go back next year and try if the administration lets us. This race got us into a world class category. Even though we lost our premier vehicle, we've learned so much. If we go back next year, we can add to this."

"Hydrogen is the fuel of the future," Ricketts said. "When everyone thinks of hydrogen, the first negative thing to come to mind is the Hindenburg."

The Hindenburg was a dirigible filled with hydrogen that went down after being struck by lightning, killing people. But as Young said, "If the Hindenburg was using any other kind of fuel, everyone would have been fried."

Hydrogen is so light and fast that leaked gas rises up and away before an explosion can occur. BMW has even published materials on hydrogen tests

See **RECORD**, page 12



Shelley Mays/photographer

BACK TO THE FUTURE?: MTSU professor Dr. Cliff Ricketts stands beside his hydrogen fueled vehicle. Students in the background are from left to right, Tony Thomas, Stan Trout and Garry Gannon.

Luna remains positive despite weekend losses

MARY RHUDY
Sports Writer

Despite a poor showing this past weekend, volleyball coach Jim Luna has every confidence in his Lady Raiders' play.

"I felt we played against Alabama and Tulane real well," he said. "They're big, powerful teams. Their rosters read like a 'Who's Who' of the best in the nation."

The teams playing in the weekend tournament were some of the toughest ones the Raiders will face this season — Austin Peay, University of Alabama at Tuscaloosa and Tulane.

MTSU lost straight games to Alabama and Austin Peay and won one game against Tulane.

But Luna likes playing teams that are competitive. He said playing the tougher teams will help his freshman gain experience.

Blue Raiders Ranked 10th

MTSU's football team is ranked 10th in the first Division I-AA poll. In the pre-season poll it was tabbed 12th.

**N
C
A
A**

1. Georgia Southern
 2. Nevada-Reno
 3. William & Mary
 4. Idaho
 5. Eastern Kentucky
 6. Furman
 7. N. Iowa
 8. Youngstown State
 9. SW Texas St.
 10. MTSU
 11. Boise State
 12. Delaware
 13. UT-Chattanooga
 14. Holy Cross
 15. NC A&T
 16. Villanova
 17. Sam Houston State
 18. Alabama St.
 19. (Tie) Citadel
- SW Missouri

**I
-
A
A**

Ready to run Cross country teams set for action

DIANNE DEOLIVEIRA
Assistant Sports Editor

Middle Tennessee's men's and women's cross country track teams will begin their season Friday at the University of the South Invitational at Sewanee.

The Lady Raiders are a veteran team this year, with three seniors and four juniors returning from a year ago.

Coach Dean Hayes has successfully led the team to a third-place finish in each of the past four years. During the past two years, Hayes said, injuries have ruined previous chances of winning a championship. Therefore, the key to 1991 is staying healthy.

The women were able to remain healthy for the 1991 indoor and outdoor track championships and contributed heavily to two titles as well.

Returning to the team are seniors Karen Barnes, Linda Brewer, Sharon Smith and juniors

Dianne DeOliveira, Kiya Thomas, Leigh Weathers and Lea White.

Thomas and Barnes finished fourth in the Ohio Valley Conference in 1989 and '90, while Smith was one of the best freshmen distance runners in the OVC during the 1988 campaign when she finished ninth.

DeOliveira won the OVC indoor mile, and White placed second in the OVC 10,000 meters last spring. Half-milers Brewer and Weathers, the OVC champion, round out a well balanced team.

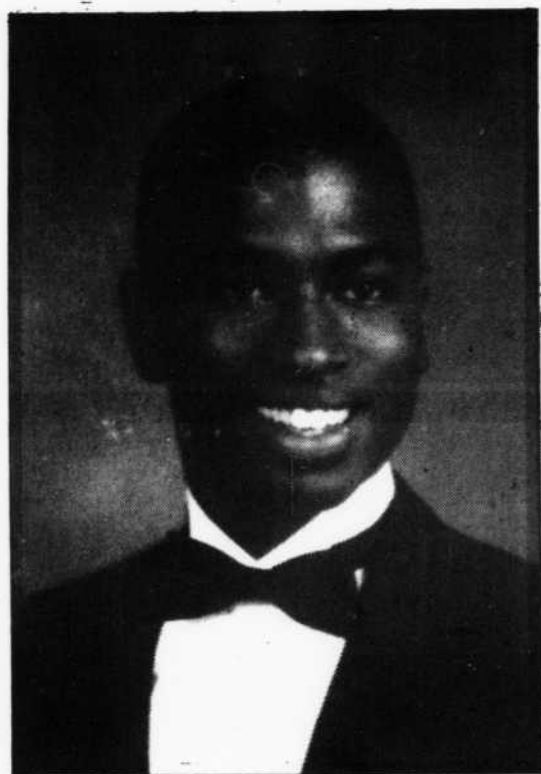
Although Eastern Kentucky is the defending OVC champion, Hayes has confidence in the Lady Raiders as long as they remain healthy.

"It's hard to win something you have never won, which was true of the 1991 track titles, but if the ladies are healthy, they should

See **TRACK**, page 12

See **TEAM**, page 12

The Midlander



"TWENTY years from now I'll flip through *The Midlander* and relive my days at Middle Tennessee State. I'm glad our yearbook's stories and photos will capture the people, events and issues that will make this year special."

Shawn E. Burgess

Shawn Burgess
Associated Student Body President

PICTURE YOURSELF IN THE MIDLANDER!

The Midlander will bring a professional portrait photographer to campus Oct. 15-16 who will be located in the Keathley University Center lounge across from the Grill. Students will receive at least three poses and proofs will be provided at no charge. Absolutely no obligation to purchase anything.

MAKE THE 1992 MIDLANDER YEARBOOK YOURBOOK!

Mail completed form and check to: *The Midlander*, Box 42, Middle Tennessee State University, Murfreesboro, TN 37132.

() Enclosed is \$15.00. I will pick up my 1991-92 yearbook in JUB #306, when it arrives in August of 1992.

() Enclosed is \$17.50. Please mail my book to () my permanent address or () my local address. (Indicate address with a check mark.)

Name _____

Social Security # _____

Local city, state, zip _____

Local phone _____ Permanent AC & phone _____

Permanent Address _____

Permanent city, state, zip _____

I understand that yearbooks will arrive in August of 1992. The *Midlander* is not responsible for books not picked up by Dec. 15 1992.

(Signature of purchaser)

Record

continued from page 11

saying that it has less than one-twentieth of the chances of exploding as gasoline.

"Hydrogen is completely environmentally friendly except for nitric oxide, and you won't have that if the engine is tuned properly," Ricketts said.

Hydrogen is also practical as a means of fuel for the future.

"What we're really working on here is a tri-fuel vehicle. You can use hydrogen backed up by propane in the city, and then for longer trips you can use gasoline," Ricketts said.

The race at Bonneville was a chance to strut hydrogen's stuff in front of the top dogs of racing.

"We wanted to show the versatility of hydrogen," Ricketts said. "We wanted to show different ways of injecting hydrogen into an engine. It (the race) was a great success because very few people in the world have ever run an engine on hydrogen."

The people at the Bonneville National speed race in Wendover definitely have something to talk about as a result of Ricketts and his staff at MTSU.

Track

continued from page 11

challenge Eastern Kentucky's eight-year string of championships," Hayes said.

MTSU's men's team will continue to reconstruct after being reinstituted last summer. With only one year of experience under their belts, the returnees include last year's top runner, junior Jason Welch, and juniors Steve Ryann and Chris Layne.

Jeff Lingwall, an Army veteran, is the top newcomer and, according to Hayes, is a solid, hard worker who is a leader.

Freshman Michael Burkett is expected to be an asset to the team as well, although he has never run cross country before. Marty Plott showed promise in the 800 meters after coming out for track last winter and Hayes thinks his competitiveness should help. Last year, Layne ran well in the OVC and adds some needed depth.

The team finished sixth in the 1990 OVC meet and is expected to make an improvement this year.

"Hopefully that men will be able to improve their place," Hayes said, "and most of them will be able to score some points in the distance events in the OVC track championships, which is something they were unable to do last year, even in winning the indoor track crown."

Team

continued from page 11

"I feel we learned a lot," he said. "We played some tough teams that pushed us hard, and that's what we're looking for this early in the season while we're getting ready for the OVC (Ohio Valley Conference)."

Results of the tournament were:

MTSU vs. Alabama — 5-15, 5-15, 7-15

MTSU vs. Tulane — 15-3, 4-15, 9-15, 6-15

MTSU vs. Austin Peay — 12-15, 7-15, 4-15

Lisa White led the team in kills with 20. Tonya Keen led the team in blocks, and Becky Tomlin was the team leader in sets.

The team's next major tournament is Sept. 20 and 21 at Clemson University in South Carolina.

The squad's first home contest will be at 7 p.m. Tuesday against Evansville University.

THRONEBERRY PROPERTIES

7 Locations Open Daily

OAK PARK 1211 Hazelwood 896-4470	Natural landscaping, large garden-style and townhouse apartments. Fireplace, W/D hook ups, appliances, water furnished. NO PETS.
BIRCHWOOD 1535 Lascassas 896-4470	Water, curtains, ceiling fan, outside storage and all appliances furnished. Small pets with deposit. 1 and 2 bedrooms available.
WINDRUSH 1735 Lascassas 893-0052	Country setting. Low electric bills. Studio, 1-2-3 bedrooms. Small pets with deposit.
PINE PARK 1210 Hazelwood 896-4470	Convenient to MTSU. Dishwasher, stove, refrigerator, and garbage disposal. Water furnished. Large kitchen. 1 and 2 bedrooms.
PARK IV 2225 E. Main 896-4470	Water furnished. 1 and 2 bedroom apartments. NO PETS.
HOLLYPARK 2426 E. Main 896-0667	Water furnished. 1 and 2 bedroom apartments, townhouses. NO PETS.
ROSEWOOD 1606 W. Tenn 890-3700	5 floor plans, exercise room, pool and tennis court. Ceiling fans, W/D hookups, appliances and drapes furnished. Near VA hospital

The Sturm truth - Dan goes 6-0 with picks

Week one is out of the way and sports writer Dan Sturm has bolted out to the lead with a perfect 6-0 picking record last week.

I didn't do so bad myself with a shining 5-1 mark, while Greg Adkins posted a 4-2 mark and Terry Massey brought up the rear at 3-3.

"I told you boys to follow my lead," Sturm boldly said.

"Don't worry, we just wanted you to lead once so you wouldn't get mad and quit. Why else do you think I picked Vanderbilt?" Massey said.

Whether the first week was fixed or not, several of the picks were lopsided victories. However, this week has some matchups that could go either way.

Although the Blue Raiders are not in action, some of the top collegiate teams from across the nation will butt heads, and the results from this week's predictions could drastically shake up the "On the Line" standings.

MTSU will return to the field next weekend in one of its biggest test of the year when it faces Eastern Kentucky in Richmond. Eastern will tune up for the 1-0 Raiders by taking on the Ohio Valley Conference's latest edition, Southeast Missouri State.

Therefore let's start this week's picks with the Colonels.

SEMO at EKV

Southeast Missouri played well in its opener against Southern Illinois, but something happened last weekend.

UT-Martin ran over the team from every angle, and it's

Tony J. Arnold On the Line

certainly not a good time to be facing one of the OVC's most potent powerhouses in Eastern Kentucky.

The Colonels dropped their opener to Louisville 24-14. Although the Cardinals were a highly respected team, EKV gave them more than they wanted and nearly pulled off the upset.

Some folks say that this is Roy Kidd's best team ever and that's saying quite a bit for a team that has won two national crowns.

This one is simple.

EKU 62 SEMO 10

SIU at APSU

The steak is over.

Austin Peay's 23-game losing streak, the longest in the nation, came to a halt last Saturday when it scored 11 points in the fourth quarter to take the win over Western Kentucky.

Roy Gregory apparently has his troops on the rise, and the Governors now find themselves atop the OVC with a 1-0 record.

Southern Illinois barely slipped by Southeast Missouri in its opener. Last week, it played Murray State and won by four.

This week, it plays at Austin Peay and the Gobs are fired up. Therefore, Peay is going to pull out another close one and be off to a impressive start.

APSU 21 SIU 20

Morehead at Marshall

Morehead has yet to impress in 1991, including a 52-14 loss to Samford a week ago.

Marshall is one of the pests of the Division I-AA's top

See Line, page 14

COLLEGE FOOTBALL Sidelines staff picks winners

TONY ARNOLD Sports Editor Love Chunks guy	GREG ADKINS Editor Braves for real guy	TERRY MASSEY Managing Editor Vanderbilt guy?	DAN STURM Sports Writer Perfect 6-0 guy
SMU 31 Vandy 24 Mustangs by a nose	SMU 54 Vandy 7 Poor little Vandy boys	SMU 6 Vandy 73 No excuses, no moral victories	SMU 34 Vandy 20 Vandy can't beat Austin Peay scrubs
UT 30 UCLA 24 Vols unimpressive in win	UT 21 UCLA 10 Go Big Orange	UT 27 UCLA 13 Pre surfer boys die!	UT 32 UCLA 10 Vols defense to stymie Bruins
Michigan 27 Notre Dame 24 Irish out of luck	Michigan 21 Notre Dame 24 Irish just get through	Michigan 17 Notre Dame 13 No luck for Irish	Michigan 49 Notre Dame 38 Wolver's get revenge
Alabama 17 Florida 31 Not enough Tide	Alabama 26 Florida 31 Bama's big boys fall	Alabama 10 Florida 27 Big Al is Gator bait	Alabama 20 Florida 41 Tide will get rolled
Penn State 28 USC 14 Lions roar	Penn St. 28 USC 14 Who Knows?	Penn State 23 USC 14 No Trojan can hold a Tiger	Penn State 34 USC 18 Trojans have too many weak spots
Houston 10 Miami 55 A real Hurricane	Houston 10 Miami 45 No contest	Houston 10 Miami 33 Klinger gets dose of own medicine	Houston 24 Miami 38 Houston can't compete

The Midlander
will arrive
September 20,
1991
They can be
picked up in
room 310 JUB.

SAVE \$3.00



TEXACO
Express Lube

QUICK OIL CHANGE
Only takes 10 minutes

Regular price \$21.95. Not good with any other offer. Only one coupon per vehicle.

Coupon expires October 31, 1991

We Take Credit Cards

*Texaco
*American Express
*Discover
*Visa
*Master Card

1438 Memorial Blvd.
893-2261

Next to Burger King
Open Mon.-Sat.
8:00AM-6:00PM

Come See and Decide For Yourself

If Stones River
Apartments Are...

TWICE as Convenient
TWICE as Private
TWICE as Quiet
TWICE as Clean

designed with TWICE as much
Storage Space and located in an
area with HALF the Congestion
and Traffic as OTHER apartment
communities.

YOU BE THE JUDGE!
MODELS AVAILABLE

205 Warrior Drive
Murfreesboro
896-6424

Hours: Mon.-Fri.
9-6, Sat. 10-5,
Sun. 1-5



Line

continued from page 13

football conference, the Southern.

However, it was the season opener for Morehead so maybe it will have the problems worked out. It has a solid team on paper and is expected to have a solid OVC season.

Marshall has two games under its belt and always finds a

Both squads once possessed prominent squads only a few short seasons ago, yet recently they've hit rock bottom.

This battle of has-beens will be close, but Western is at home and that's always a tough place to scale the 'Hill's.

WKU 32 Murray 17

TSU and Jackson St.

A neutral ground contest being held in Birmingham, Ala., this one will attract a lot of attention.

Both schools have solid support, and the turnstiles will be put to good use.

Unfortunately, TSU has looked less than impressive in its

opening two contests. Quarterback James Wade came in for Jimmy Bethea during the MTSU loss after setting out the first week with an injury. However, he reinjured his leg in the closing minutes and is going to be lost for the contest.

Jackson State lost its opener by a narrow margin and the talent level compares to that of TSU.

Look for the TSU Tigers to get things going and make a first-half close game, into a second-

half romp.

TSU 37 JSU 20

TN. Tech at Ohio

Tennessee Tech can't seem to settle on a quarterback, although it does have some talent at the position.

Last week, several players saw action, but UT-Chattanooga was too much for anyone to overcome at home as it fell 35-14.

The Ohio Bobcats are members of the Mid-American Conference and opened their season with a 17-17 tie with Central Michigan.

Tech needs to have some players step forward to solidify a starting team in order to contend for the OVC crown, although this weekend the Eagles will be nabbed by the Bobcats and still searching for the answers.

Ohio 49 TTU 10

UCLA at Tennessee

Remember what Tennessee did to UCLA a year ago?

They snuck up on the Bruins in California and beat them, so you know the Bruins will be coming to the hills for revenge.

Tennessee looked good in its win over Louisville, yet UCLA will be a bigger test.

Don't expect the upset. However, do expect the Volunteers to break out in a worrisome sweat at some point in

the contest.

UCLA will leave a impression on the Vol fans after Tennessee has to come from behind in the final half.

UT 30 UCLA 24

SMU at Vanderbilt

This is one that everyone can look at and say Vanderbilt should win.

That's the same thing everyone did last year, too, when the 'Dores went to Dallas and were embarrassed by the Mustangs, signifying an end to Watson Brown's head coaching

career at Vandy.

This will be the home opener for the Commadores, who actually looked decent in one half of the Syracuse 37-10 win last weekend.

SMU also looked impressive in a marginal loss to an unimpressive Arkansas squad.

I said last week that Vandy might not win a game all year, and this one might be their best shot. However, I'm not a believer and expect it to be tight before the Mustangs pull it out by a nose.

SMU 31 Vandy 24

On the Line Staff Standings

	W	L	GB	PCT.
Dan Sturm	6	0	-	.1000
Tony Arnold	5	1	1	.833
Greg Adkins	4	2	2	.666
Terry Massey	3	3	3	.500

way into the playoffs at the season's end. Therefore, considering the fact that it is also home, the Thundering Herd will overrun the Eagles this weekend.

Marshall 42 Morehead 10
Murray at Western Ky.

Murray's 31-27 loss to Southern Illinois last weekend wasn't the right foot to start on.

Western, too, stumbled out of the gates, falling victim to Austin Peay.

Band Together and Buy Bonds!

America, like a good marching band, needs the cooperation of all members to move forward efficiently. Purchasing U.S. Savings Bonds is one way to help the national economy, and at the same time, help yourself. For the individual, Bonds pay competitive interest rates, are guaranteed by the U.S. Government, and have certain tax advantages. For the nation, Bonds are a cost-effective way to finance the national debt.

Let's band together -
Buy bonds!

CELEBRATE AN AMERICAN TRADITION
50 YEARS OF U.S. SAVINGS BONDS



Attention Creative Minds!

Deadline: Oct. 1, 1991

for Collage entries

Please bring all entries to room 306 of the James Union Building. Include name, P.O. box, telephone number and title with each entry. For further information, please contact Patricia Tenpenny at 898-5927.

Submit before its too late!

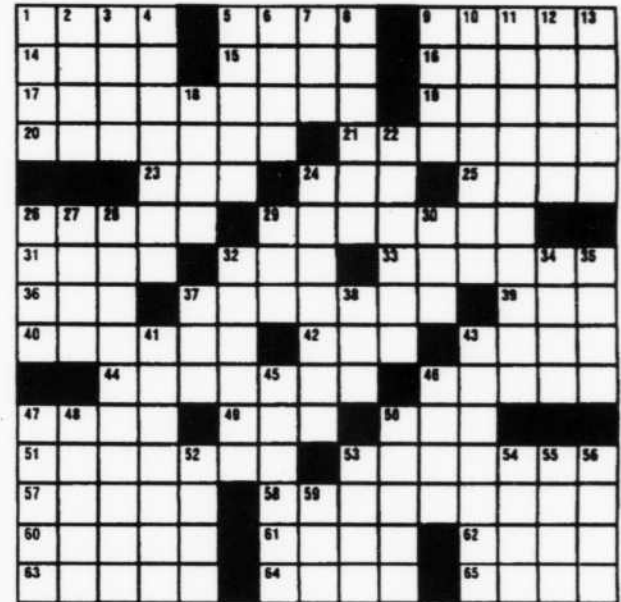
Comics



THE Daily Crossword by Martha J. De Witt

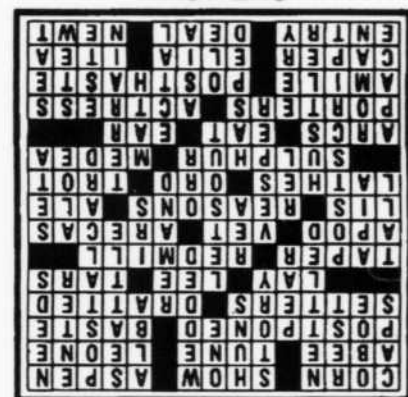
- ACROSS**
- Crib item
 - Evince
 - Colo. ski resort
 - Busy as —
 - Alr
 - Sierra —
 - Put off
 - Sew loosely
 - Hunting dogs
 - Confounded
 - Ballad
 - Protected side
 - Salts
 - Candle
 - Herbert's "The —"
 - Footless
 - Dog doc
 - Palm trees
 - Fleur-de—
 - Uses logic
 - Malt beverage
 - Wood-turning tools
 - Cal. fort
 - Translation of a sort
 - Molasses' partner
 - Jason's lady
 - Rainbows
 - Consume
 - Corn unit
 - Redcaps
 - Thesplan
 - "I walked — with Sorrow"
 - In a hurry
 - Dido
 - Director Kazan
 - Virginia willow
 - Ingress
 - Pine board
 - Brilliant salamander

- DOWN**
- Skull and dunce
 - Woodwind
 - Remainder
 - Irked
 - Lie
 - Barbarians
 - Person
 - Married
 - Can. prov.
 - Puget Sound port
 - Piece of mail
 - Register
 - Lacks
 - Fruit
 - Send back to a lower court
 - Divulges
 - High
 - Samoan port
 - Letter addition
 - US agency
 - US agency
 - Evening star
 - Century plant
 - Botanical bristle
 - Kinsman: abbr.
 - Big name in hockey
 - Fraud of sorts
 - Ground
 - Attached a door fastener
 - Sch. subj.
 - Quickly
 - Kind of holiday
 - Outward
 - Eldritch
 - Global area
 - Princely lt. family
 - Fret
 - Throne
 - Huzzah



©1991, Tribune Media Services

ANSWERS



ZOO U. by Mark Weltzman



"Man... by the time we graduate we'll be endangered species."

Distributed by Tribune Media Services

©1991 Mark Weltzman

Classifieds

00. NOTICES

LIVETALK
1-900-773-3777
ADULTS ONLY
\$2.50/min 10 min/minimum

MALE ROOMMATE WANTED to share 2 bedroom apartment located 1 1/2 miles from campus. Share monthly rent of \$355 and 1/2 electricity. Call 890-8078.

ROOMMATE WANTED - Male looking for female roommate to share an apartment; \$125 per month all utilities furnished; near campus. Call 890-5262.

15. MISCELLANEOUS

HEALTH INSURANCE Affordable, Comprehensive, Major Medical. Offers coverage for both in-patient and out-patient expenses. Short-term plans available. Excellent for students or persons waiting to be covered by group plan. "A" insurer. 890-1586.

Gold 'N' Pawn: Students get cash fast! Feel comfortable with our service. Diamonds, Gold, Fire Arms, Collectibles. Large loans on important jewelry. Across from Midas Muffler, 1803 NW Broad.

GET INVOLVED: Student Programming has non-paying openings available on each of its standing committees. For information, call 898-2551. To fill out an application, go to KUC 308.

PROBLEMS? MTSU's Guidance and Counseling Center can help. Call 898-2670 or go by KUC 329 for more information.

FOR SALE: Women's black leather tap shoes. Capezio character shoes -- taps included. 7 1/2M, 2 1/2 inch heel. Worn only three times. Price Negotiable. Call 848-1075.

Policies:

Sidelines will be responsible for the first incorrect insertion of any classified advertisement. No refunds will be made for partial cancellations.

Sidelines reserves the right to refuse any advertisement it deems objectionable for any reason.

Classifieds will be accepted on a prepaid basis only, except for businesses with established accounts. Ads may be placed at the *Sidelines* business office, James Union Building 308 or by mail with payment enclosed. Checks should be made out to *Sidelines* and sent to P.O. Box 42, Middle Tennessee State University, Murfreesboro, TN 37132. For more information, call 898-2815 or 898-2533.

LOST: A man's gold rope bracelet. If found, please call 898-4329 FOR REWARD.

QUALITY, PROFESSIONAL TYPING AT DISCOUNT PRICES!!! 12 YEARS' EXPERIENCE. From resumes to theses; graphics; laser printer. Overnight service available. 10% NEW CLIENT DISCOUNT! Cecilia 893-2818 anytime.

Typing, word processing and resumes. Pick-up delivery available. Leave message on answering machine if not in. 896-5013

Typing, accurate and confidential. IBM compatible computer. Letter quality printer. Free spell check. \$2/page. Call Sharon Farmer, 890-3554.

21. HELP WANTED

\$1,000s Weekly! Stuffing envelopes at home. For details, send SASE to: TRM, Dept. SL-A1, MTSU Box B439, Murfreesboro, TN 37132.

Silverspoon Cafe: Hiring Cooks, Waiter/Waitresses, Bartenders, Host & Hostesses. Apply between 2:30 -5:00. Apply at Cool Springs Galleria, 771-3036

DRIVERS for local pick-up and delivery. Valid license required. Must drive 5-speed or automatic. Part-time Tuesdays. 890-6292 (Ken).

Person with child care experience to come to my business and baby-sit a toddler. Flexible hours. Salary negotiable. Need Immediately. 890-8350 Stephanie.

\$6.50 to Start Student work program. All majors may apply. Scholarships available. Call Michelle at 391-0451 from 9 a.m. until 1 p.m.

Readers Are Advised to Investigate any business thoroughly before investing money. *Sidelines* can not accept any responsibility for losses incurred from ads published..

READ AND USE CLASSIFIED ADS

22. EMPLOYMENT SERVICE

NEED A JOB? MTSU's Placement Office can help you find a part-time job while you're in school and with a career position when you graduate. For more information, call 898-2500 or go by KUC 328 to sign up.

35. ROOMS

ROOM FOR RENT: Call 890-2163 for details.

41. VEHICLES

FOR SALE: Red Chevette. Good condition. For details call 896-1920 ask for Nancy or Amy.

77 Porsche 924: 4-speed, AM/FM cassette. Cream with brown interior. Bra. Looks & runs good. \$4,295. 896-1176 days; 895-5682 evenings.

89 Buick Century Custom: V6, AM/FM cassette. AT&T Phone, 4-door. AT. Dark Blue. 896-1176 days; 895-5682 evenings. \$8500.

76 Camaro: White, rebuilt 350 engine with only 50,000 miles. New tires and paint. 890-0180, after 5 p.m. weekdays. \$1500.

42. FURNITURE

COUCH, LOVESEAT, CHAIR. Pastel plaid, good condition, \$100. Call 895-1759 for more information.

FOR SALE: Nice, matching couch and chair. Call 895-1658 and leave message. Color - dark blue, \$80.

44. COMPUTERS/ BUSINESS EQUIPMENT

OFFICE FURNITURE OUTLET --- New and Used Desks, Chairs, Files, Bookcases, Computer Furniture, Large Showroom, 8-5 Monday-Friday, Delivery Available. Charge cards accepted, Telephone pricing and inquiries welcome, 896-1832, 1103 Broad St., Murfreesboro.



CLASSIFIED RATES

DISPLAY

Open Local Classified Display \$4.75
Contract 83-126 \$4.25
127-166 \$4.00
167-210 \$3.75
211-420 \$3.50
421 plus \$3.25

LINE ADS

\$3.00 for 20 words or less

10c per each additional word per insert

QUANTITY DISCOUNTS

20 words or less:

Semester Rate: \$50 (26 issues)

Half Semester: \$25 (13 issues)

10 issues: \$20 - 5 issues: \$10

10c a word per issue applies for 21 plus ads.

Classified ads must be paid for in advance

Contact our office for more information:

898-2815 or 898-2533

FIND IT, BUY IT, SELL IT!

Sidelines Classifieds Work For You

Classified Directory:

(Please reference these categories when placing your ad.)

00. NOTICES

1. Announcements
2. Personals
3. Lost/Found
4. Roommates
5. Carpools
6. Opportunity

10. SERVICES

11. Child Care
12. Janitorial/ Housecleaning

13. Lawn/Garden

14. Tutoring
15. Miscellaneous
20. **HELP NEEDED**
21. Help Wanted
22. Employment Agencies
23. Child Care
24. Jobs Wanted

30. RENTALS

31. Apartments
32. Houses
33. Duplexes
34. Mobile Homes
35. Rooms

36. Rooms with Board

37. Condominiums
38. Wanted to Rent

40. MERCHANDISE FOR SALE

41. Vehicles
42. Furniture
43. Cameras/Video
44. Computers/ Business Equip.
45. Radios/TV
46. Musical/Stereo
48. Yard Sales
49. Wanted to Buy