

SIDELINES

Middle Tennessee State University

October 12, 1989

Despite Student Programming's summer search

MTSU unable to find Homecoming band

TIM NAVE
Staff Writer

Student Programming was unable to schedule a concert in Murphy Center for this year's Homecoming week due to a lack of available bands, according to Harold Smith, director of Student Programming.

Smith said that "most [big name] bands prefer to tour during the summer" and that Student Programming had simply been unable to book a show.

"I simply could not find anything, anywhere, Murphy Center-size for [Homecoming]," Smith said.

Student Programming had originally hoped the Chicago/Beach Boys tour would play during Homecoming, the director said.

"In early August I thought the Chicago/Beach Boys show was going to route in here, even though they had just played Starwood earlier this summer," Smith said. "But they opted to go elsewhere."

"By late August the possibility of having a Homecoming concert was pretty much out of the question, so we started regrouping to see if there were other things we could do during that week."

The Student Programming director said that he had hoped Amy Grant, who played to a crowd of approximately 6,600 at last year's Homecoming, would return again this year.

"Amy Grant had refused to play Starwood in the past because of their beer sales," he said, "but she let us down this year when she played there during the summer."

*"Had Starwood not have been here . . .
I think we would have done more
shows than we have done. . ."*

Harold Smith

Despite the lack of a big-name band, Smith said he feels Student Programming had scheduled some excellent events.

The Atlanta Ballet will present a free performance on Tuesday night, Oct. 17. Count Basic's Jazz orchestra will play on Wednesday. Two Saturn V laser light rock concert shows will be offered Thursday, and Riot Act, a non-improv comedy group, will appear in a noon show Friday, Oct. 20. All shows will be held in Tucker Theatre. Ticket infor-

mation is available at the KUC ticket booth.

As far as major musical acts, Smith said Gloria Estefan and The Miami Sound Machine had been booked into Murphy Center Oct. 29, one week after Homecoming activities conclude.

In addition to musical groups' preference for summer tours, Smith also cited the popularity of amphitheatres like Starwood as a reason for MTSU's inability to attract a major act.

He added, however that it "was not the sole reason."

"Had Starwood not have been here," Smith said, "I think we would have done more shows than we have done — but I don't think Starwood has hurt us as badly as everyone believes it has."

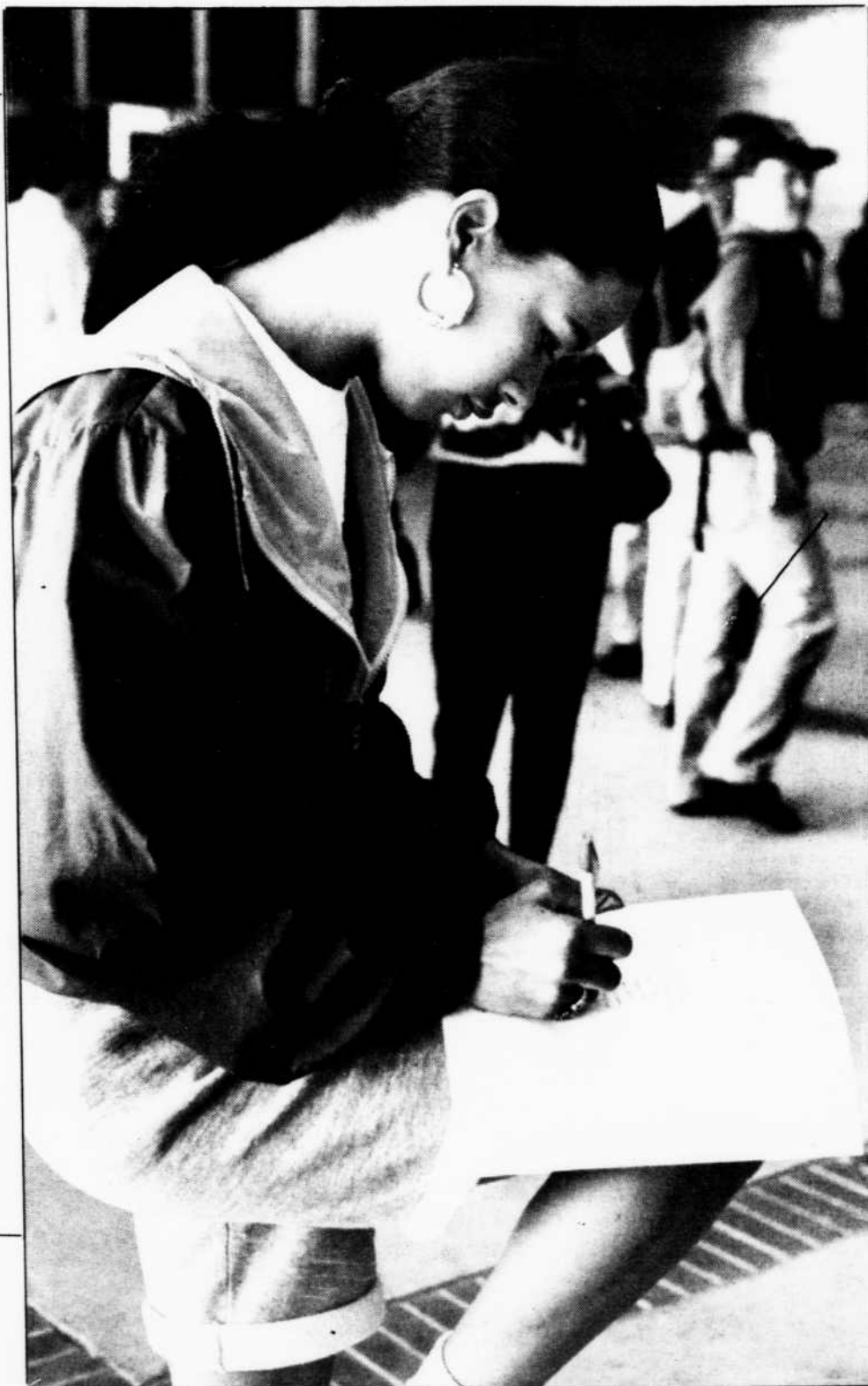
Smith said he remains optimistic about future Murphy Center Homecoming shows.

"I think we've been very fortunate that we've been able to do something in Murphy Center for most years at Homecoming," Smith said.

This year will be the third time in the 20 years since Murphy Center was completed that MTSU was not able to scheduled a major concert for Homecoming. ■

Junior psychology major Mykalyne Sellars fills out her ASB Homecoming Queen/freshman senate election ballot outside Peck Hall Wednesday (please see page 3 for election results and related story).

Photo by
Sandra Rennie•Staff



Former music department chairman dies Saturday

From Staff Reports

Former MTSU Music Department chairman Neil Hutchison Wright died at home last Saturday, Oct. 7.

Wright, 72, was chairman of the music department for 31 years during which he directed the concert choir, opera and taught conducting.

In addition to his many recitals before the Tennessee Music Teachers Association, the Nashville Chapter of the National Association of Teachers and Singing and the Tennessee Music Educators Association, Wright had also played trumpet during the 40's and 50's for Radio WSM, which broadcast jazz and big band music during that era.

Along with his wife, Margret Johnson Wright, who also taught music at MTSU, Wright was honored by the University when the music building was named after him.

"He was fantastic — it's a real loss to the community," said John Duke, director of MTSU's Jazz Band and former colleague of Wright. "He was highly respected, and I know that he will be greatly missed."

"He was a real gentleman, and I admired his talent as a musician," said Delmar Pockat, an education professor. "He was a man of great humor and was a very relaxed person."

"He and his wife were a musical team, a team that, sadly, is gone now. He was also quite an accomplished photographer and even had a darkroom set up in his house. I have a picture he took of KOM up in my office. . . we're really going to miss him."

Wright is survived by his wife, Margret Johnson Wright; two sons, Neil Hutchison Wright III of Richmond, Ky., and David Quintin Wright of Murfreesboro; and three grandchildren, Rosmary Loren Wright, Matthew Neilson Wright and Sarah Elizabeth Wright. ■



Neil Hutchison
Wright

**We're going
to put
You
in pictures**



In the 1898-90 Midlander, that is, and it is absolutely free. All you have to do is show up and smile. Our photographer will be in the KUC lounge across from the Grill from 8:00-4:00 p.m. October 23-24 to take underclass photographs. Senior portraits will be made from

10:00 a.m.—6:00 p.m. October 25-26
and 8:00 a.m.—4:00 p.m. October 27.

Campus Capsule

Campus Capsule is an open bulletin board for the entire MTSU community. Submissions must be turned in to Room 310 of the James Union Building and will be printed on the basis of timeliness and space. No Sidelines staff member can insure the publication of any entry. Deadlines are 3 p.m. Wednesday and Friday.

Collage. MTSU's creative arts magazine, is now accepting submissions of artwork, photography, and literature. Deadline is Oct. 13, at 4:30 p.m. For more information, contact Student Publications at 898-2815.

The Douglas E. Stults Memorial Scholarship fundraising committee is now accepting donations towards the establishment of a media scholarship. For more information, please contact Jill McWhorter at 898-2917.

The Democratic Party of Rutherford County will hold a reorganization meeting Saturday, Oct. 14, at 12 p.m. in the second floor of the county courthouse. For more information, call Zadic B. Key at 893-2521.

The 1990 Midlander Big Picture will take place Tuesday, Oct. 17, at 3 p.m. in the KUC courtyard. Anyone interested in being pictured in the 1990 yearbook is welcome to attend. For more information call 898-2815.

The Public Relations Student Society of America will hold a meeting Tuesday, Oct. 17, at 4:30 p.m. in Room 313 of the KUC. The meeting is free and open to the public.

Tennessee Inter-collegiate State Legislator applications are now available in the ASB office, Room 304 of the KUC from 8 a.m.-4:30 p.m. Deadline for submission is Oct. 20.

MTSU's Wellness Center's Blood Drive will begin Wednesday, Oct. 18, from 6 a.m.-9 p.m. in the Blue Raider room of Murphy Center. For more information call 898-5549.

Juniors, Seniors, and Graduate Students who have a cumulative GPA of 2.8 or better may apply for a Who's Who Among American College Students from the ASB office, Room 304 of the KUC.

A mock LSAT will be given by the MTSU Pre-Law Society on Oct. 28. Anyone interested should stop by the Political Science office, Room 209A of Peck Hall.

The MTSU Tennessee Volunteers for Life will be holding a meeting to discuss the organization of the Pro-Life movement in Tennessee at Murfreesboro's Garden Plaza Hotel, located on Highway 96 and Interstate 24. ■

Crazyhead

IN CONCERT
Monday, Oct. 16
at Mainstreet

NASHVILLE 2814 West End Ave*
NASHVILLE 4022 Nolensville Rd
NASHVILLE 1001 Murfreesboro Rd*
NASHVILLE 2620 Gallatin Rd
NASHVILLE 103 White Bridge Rd
ANTIOCH 5251 Hickory Hollow Pkwy*
BRENTWOOD 330 Franklin Rd*
DONELSON 2428 Lebanon Rd
MURFREESBORO 131 W Northfield*
* movie rental locations

TURTLE'S

MUSIC • VIDEO

CRAZYHEAD DESERT ORCHID

CONTAINS

Time Has Taken It's Toll On You
Have Love Will Travel
Down On You (Dragon City)



6.88^{CS} 11.88^{CD}
Sale prices good thru Tues., Oct. 24



Aerospace grad speaks

From Staff Reports

An MTSU alumnus, who is now a member of the United States Space Shuttle's ground support crew, described the ins and outs of the aerospace business to MTSU students this week.

Michael McCall, who graduated with an aerospace degree in the fall of 1987, spoke to several classes here Tuesday. McCall is now a project engineer with Rockwell International in Houston and will be part of a team at NASA Mission Control answering technical questions about experiments on the Space Shuttle Atlantis, originally scheduled to lift today.

A failure in the shuttle's computer system has delayed the launch for several days, NASA officials said yesterday.

His position with Rockwell, McCall said, involves him with all aspects of the secondary payload experiments, which are subcontracted to the company by NASA. These are smaller scientific tests carried out by the shuttle crew during their missions. He also said he helps design the experiments, writes the documentation, trains the as-

tronauts who will be carrying them out, provides technical support during the flight and organizes postflight analysis of the project.

"My job ranges from point 'a' to point 'z,'" he said. "We try to keep it simple enough so that a sixth grader could be in orbit and take care of everything."

A major portion of McCall's speech dealt with his attempts to get a job in the aerospace field. During his senior year at MTSU, he flew to Houston at his own cost for several interviews with the major companies there.

"Trying to get a job is very hard," he said. "I had to work at it. That's what it took — along with my energy and enthusiasm."

McCall told the group that many corporations involved with the space program, including Rockwell, now require drug tests from potential employees.

"If you're on drugs when you take the interview, then you're in trouble," he said. ■

Freshman elect ASB senators

CHRIS WHALEY
Staff Writer

MTSU freshman voted five of their classmates into the ASB Senate last night, according to ASB Election Commissioner Craig Smith.

The new senators and the number of votes they received are as follows:

- Amber Hicks, 90 votes;
- Colby Craig, 83 votes;
- Doug Adams, 81 votes;
- Ed Farmer, 69 votes;
- Ashley Baucum, 54 votes.

The results for the losing candidates are as follows:

- Ken Guthrie, 51 votes;
- Jeff Owens, 51 votes;
- Johnny Trail, 38 votes.

The new congressmen will all serve one year in the ASB Senate, which is composed of five senators from each class.

MTSU's freshman class currently numbers at 4,275 students, Cliff Gillespie, dean of admissions, records, and information systems said Tuesday.

Two-hundred and twenty-six of those freshman voted in yesterday's elections, Smith said.

"It was a typical vote," the election commissioner said of the low turnout. ■

Campus Security Blotter

Streakers could pay fine, do time

Two male MTSU students were arrested Monday night by Campus Security for public drunkenness and indecent exposure after "streaking" in Cummings Hall, according to Security's Sgt. Nixon.

"They committed a misdemeanor," the sergeant said, "and they will have to pay court fees, possibly a fine or they could even have to do some time in jail — its all up to the judge."

The students will appear before a state court sometime in the next two weeks, Nixon said.

"They were definitely intoxicated," the sergeant added. "I think it was a birthday prank of some kind."

Nixon said that he thought most people didn't understand how serious a charge of indecent exposure could be.

"[That charge] will stay with those guys forever," he said of the suspect's permanent police record. "Someday when one of them goes to get a job and is asked if he has ever been arrested, he'll have to say 'yeah,' and admit it was for indecent exposure. Would you give someone like that a job?" ■

BETTER THAN
EVER!

1989 Midlander

Homecoming — 1989

Middle Tennessee State University

Knowing that you want to share your special times in your life with family and friends we at the **Garden Plaza Hotel** wish to extend to you a Homecoming special of \$49.00 nightly to your family and friends

Enjoy an evening relaxing around our indoor/outdoor pool or plan a plush dinner for family and friends at Ezra's Restaurant and Lounge.



**Garden Plaza
Hotel**

**"Experience The Difference" at
The Garden Plaza Hotel**

Murfreesboro Call 1-615-895-5555
1-800/3GARDEN

CUSTOM PRINTED
SWEATSHIRTS
FOR
HOMECOMING



SCREEN
A R T
401 S. MANEY • MURFREESBORO
890-7511

527
MAIN STREET

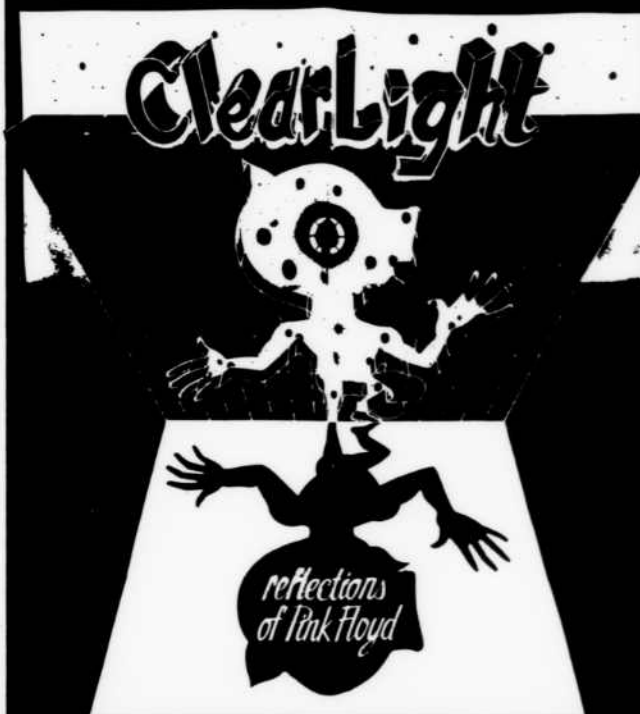
Thursday, Oct. 12th
THE QUESTIONNAIRES

with special guests **SWING**
show starts at 10 pm

Tickets: \$5-limited advance and
\$7-day of show; on sale at Austin
Audio in the Mainstreet Building

Friday, Oct. 13th
The Wizards

Sat. Oct. 14th



**Pink Floyd will not be playing at
Mainstreet, but Clearlight will!**
Touring with a 65,000 watt light
show and a 12,000 watt sound
system. Extraordinary produc-
tion creating the mystique of
Pink Floyd. Don't miss this show!

Sunday, Oct. 15th

Mercy Rules
with special guests **Stiff Kitty**

For more information
contact 320-5135 / 890-
2775

All shows are 21 yrs. old
ID required

Coming Oct. 20

Jimmy Hall
and the Prisoners of Love

OPINIONS

University students, programs earn respect

LIFE IN
HELL

©1989 BY
MATT
GROENING

Putting down MTSU has long been a favorite pastime of both university students and people all over Middle Tennessee. From "Middle Tennessee State High School" to "The vocational-technical school of the 21st Century," almost everyone has a cute saying about good ole' Middle. It's good to remember, however, that there is nothing wrong with having pride in your school.

There are many obvious things about MTSU which any student should be proud. Our athletic teams have a long tradition of success. The Tennessee Livestock Center has brought both money and recognition to the university. Furthermore, our campus may be the most beautiful of any campus in the board of regents system.

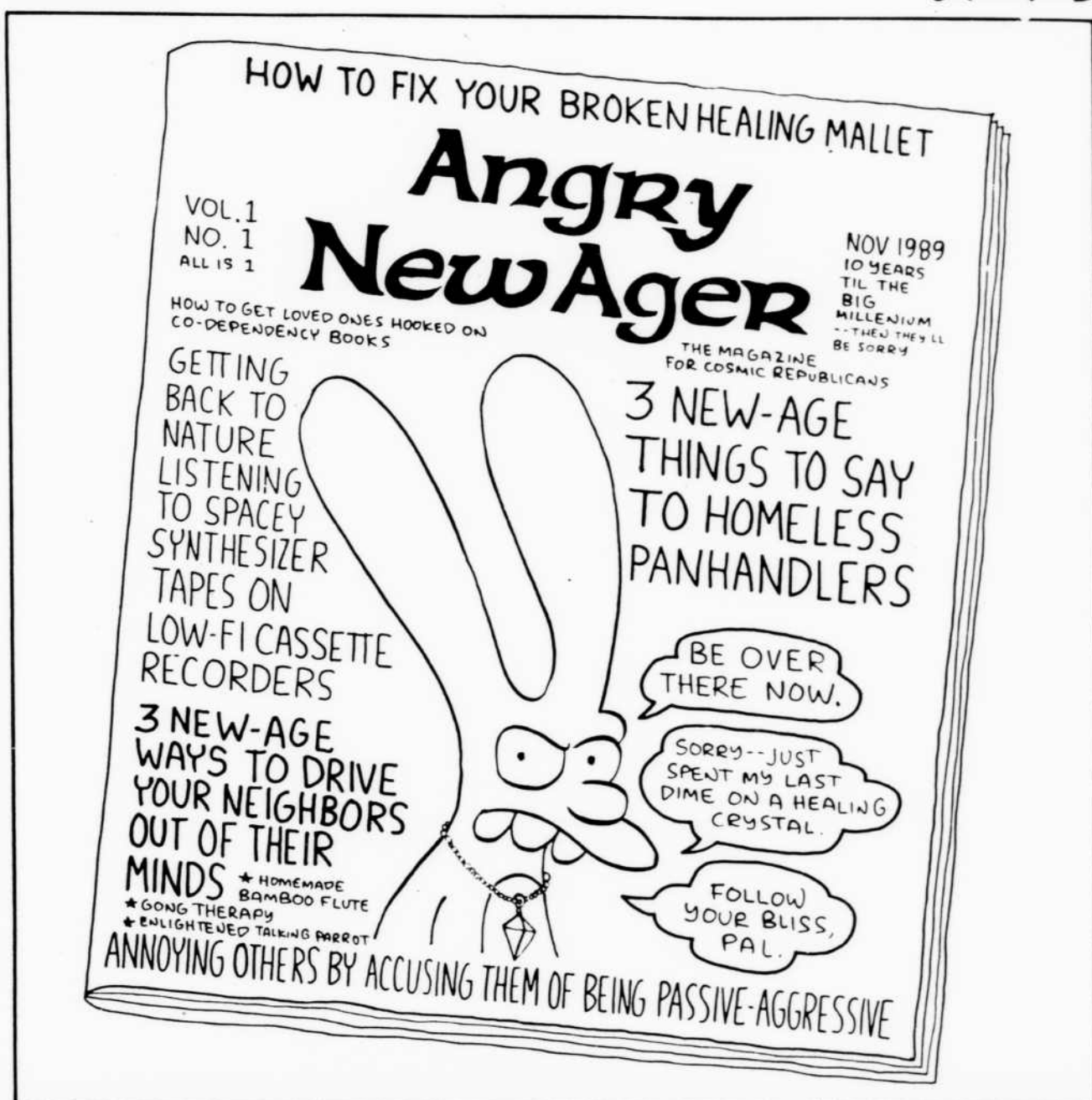
But the university also has some assets that are a little less known, though no less important.

A production by the MTSU theater department reached the regional finals of a national competition this spring, an ad campaign by the P.R. Club has an excellent chance of winning a national contest and the Center for Popular Music is rapidly being recognized for its impressive collection.

These are only some of the accomplishments of MTSU and its students.

This is not a call for mindless support of the school. Things don't get fixed unless "the powers that be" notice they're broken. There are serious problems facing MTSU that cannot be ignored. But there is a difference between constructive criticism and a simple put-down.

Just try to remember, when you put down the university you put down yourself as well. ■



SIDELINES

KEN SALTER
Editor
898-2337

JILL McWHORTER
Managing Editor
898-2917

CHRIS BELL
Opinions Editor
898-2337

JEREMY ROLFS
News Editor
898-2336

SANDRA RENNIE
Photo Editor
898-2475

LISA RYE
Production Manager
898-2917

EVELYN DOUGHERTY
Advertising Manager
898-2533

JENNY TENPENNY CROUCH
Student Publications Coordinator
898-2338

Opinion Page Policy

Unsigned editorials represent the viewpoint of the paper while signed editorials reflect the views of the author and may not reflect the opinion of *Sidelines* as a whole.

Sidelines encourages letters to the editor from students, faculty, administration and the general public. All letters must be accompanied by the author's name, campus address, and phone number. Phone numbers will be used for verification purposes only and will not be published. Address all letters to *Sidelines* letters to the Editor, Box 42, MTSU 37132, or bring them by Room 310 of the James Union Building.

Letters to the Editor

Dorm rules nothing to get upset about

Dear Editor:

I am writing in response to Mr. Chris Bell's article on MTSU's visitation policy on sex. As expected in the article, I dashed off quite quickly to grab pen and paper, but (in contrast to what was mentioned in the article) I have no intention of addressing the declining morality of today's college students; if I did, then I would have to extend the issue of declining morality to a great deal of people in the world.

Anyhow, I totally disagree with this article because it has the potential of creating another "controversy" on campus in comparison with the homosexual "controversy" of about a year ago. Consequently, this article implies that the sole purpose of visitation is to encourage or maintain sexual activity. Unfortunately, this is supported by the common belief that when a guy and a girl congregate in a room together, then they are engaging in the "nasty" or some other similar activity. Likewise, this article suggests that visitation of the same sex promotes sexual activity or homosexual activity. However, I'd like to point out that just because residents participate in visitation, doesn't necessarily mean that uncommon activity is going on and (yes) this includes visitors of the same and opposite sex. MTSU's policy is based on common sense and fairness — it at least allows visitation. Also, it provides dorms with no

visitation if a resident desires it. In other words, residents have a choice of visitation or no visitation. The choice is logical because it recognizes that their residents are entitled to certain rights. In essence, I find nothing wrong with MTSU's visitation policy.

In no way am I rejecting the belief that people engage in sexual activity during their visitation rights, but this belief cannot be afforded to every resident who's privileged with visitation. In the same regards, I do reject the article's implication that visitation involving the same sex primarily indicates homosexual activity.

Again, don't let this issue of MTSU's housing policy of visitation become a hassling controversy. It is totally not worth it.

Tonya Hayes
Box 7244

Editors' Note: While we're getting as tired of saying this as you are of reading it, please include your correct local phone number with your letter. We will not print the number, but we must call you to verify the letter's origin. If you have written a letter and it wasn't printed, that's the reason.

German exodus examined

W. Andrew Turman
Go Figure

I had put off doing my oral report in International Relations long enough. I had hoped that through the stacks of newspaper and magazine articles dated from the beginning semester, I would find the perfect article that would tie everything together and put the events in the proper perspective.

But as class began, I knew I had waited long enough. I should give my report before the entire country emigrated!

The East German Exodus to the West has been quite the September news flash. Over 32,000 people have taken refuge in the "other" Germany during the recent opening of the borders between Hungary and West Germany.

Granted, this figure represents a mere 0.2 percent of the country's 16 million population, but officials fear the domino theory or ripple effect.

This recent surge of dissention has caused a cloud of demonstrations and protests calling for the introduction of democratic reform.

This is a touchy situation for Mikael Gorbachev, already floundering in the midsts of his perestroika and glasnost. If he takes military action in the Eastern Bloc country, as in instituting martial law, he runs the risk of losing those gains he has made in his country's reform.

If he does nothing, however, he could face the loss of the Warsaw Pact's greatest economic power. I wonder what was said between Gorbachev and East German Pres-

ident Honeke during the Soviet leader's recent visit to East Berlin?

The German refugees are automatically issued West German citizenship papers and a West German passport upon arrival to the sister nation. West Germany does this for several reasons.

They have long held high hopes for the reunification of the two divided nations. Both Germanies speak the same language, have the same cultural background and, until recently, have had the same government. West Germany holds the East Germans in the highest esteem.

Do not, however, pretend that there is no opposition to the immigration. West Germany is plagued with high unemployment and a sudden influx of workers who will work longer hours for less money will worsen the problem.

This mass migration raises a few questions worth examining. What effect will this trend have on the already precarious "baby dearth" both German countries now experience? The population over the age of 65 is 16 percent in West Germany and 13 percent in East Germany. The rate of natural increase in West Germany is negative, 1.3 percent; East Germany's is zero percent. This means that the larger, older population will be forced to depend on the younger, shrinking working class.

Though less severe, this trend is also occurring in the U.S. Much of this phenomenon we owe to the declining family size typical of industrialized nations. As a result, part of the damaging effects of industrialization is the high rate of divorce and the rise of single

parent families.

The German question, both the typical one concerning migration and the longer lasting one dealing with reunification, must be answered. I, for one think that Germany will never be one country again. No other country, including the U.S. and the U.S.S.R., would be able to compete economically with the combined powers of the fourth strongest economic power and the number one economic power in the Warsaw Pact. Germany must not be allowed to rise to power, lest another try for world domination may also arise again. ■

The 1990 *Midlander* will be shooting "The Big Picture" in the KUC courtyard on Tuesday, October 17 at 3:00 (prior to Fight Song Competition). ANYONE interested in being pictured in the 1990 yearbook is welcome to attend.

WHERE: KUC courtyard
3:00 pm

DATE: Oct. 17, Tues.

TOP OF THE BLOCK

Presents
Teresa
Pearson

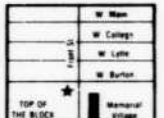


MTSU SPECIAL - show your student or faculty I.D. and receive \$3 off a regular \$13 shampoo, cut & style with Teresa

Perms \$30.00

Offer expires 12-15-89

Top of the Block
324 W. Burton St.
890-6620



The MTSU Special Events Committee presents

SATURN V[®] THE LASER LIGHT ROCK CONCERT

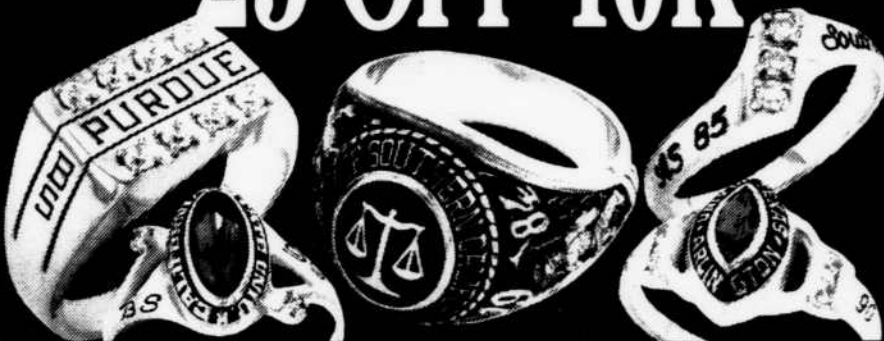
FEATURING
THE MUSIC OF

U2
PINK FLOYD
DEF LEPPARD
INXS
THE CURE
GRATEFUL DEAD
GUNS & ROSES

Two Shows Only 7:00 p.m. & 9:00 p.m.
Thursday, October 19, Tucker Theatre
Tickets For Either Show only \$6.00
Tickets Available in KUC Room 308
and Murphy Center Athletic Ticket Office
Call for information 898-2551
Concert Ticket Office

GOLD RING SALE

\$75 OFF 18K
\$50 OFF 14K
\$25 OFF 10K



Order your college ring NOW.

JOSTENS

AMERICA'S COLLEGE RING™

Date: 10 16-10 20 Time: 9-3 Deposit Required: 25.00

Place: **Phillips Bookstore** KUC

Meet with your Jostens representative for full details. See our complete ring selection on display in your college bookstore.
88-770A(CP-801-80)

FEATURES

MTSU Homecoming offers students many 'windows'

MTSU's Homecoming '89 will be filled with a variety of activities that are sure to please anyone who has a bit of school spirit.

"Windows to the World" is the theme of this year's homecoming and activities. The activities planned range from The Blue Raider Biathlon to the crowning of a new homecoming queen.

Sunday, Oct. 15

- The Blue Raider Biathlon kicks off the week with a 5K/30K/5K run-bike-run for individuals and teams. A "fun biathlon" is also scheduled, which consists of a 12-mile bike/one-mile run. For more information, call MTSU Campus Recreation at 898-2104.

Monday, Oct. 16

- The ASB is sponsoring a chili cook-off at 5:30 p.m. in the Tennessee Livestock Center.

Besides tasting chili, there will also be a hotdog-eating contest, as well as live music. Tickets are \$3 and will be available at the door.

- A concert by the Middle Tennessee Symphony Orchestra will be given in the Tucker Theatre in the Boutwell Dramatic Arts Building. The group is directed by MTSU's Laurence Harvin and will feature guest pianist Klara Wuertz. Reserved seating at the door will be \$7 for adults and \$2 for children under 12.

Tuesday, Oct. 17

- Many campus groups will compete in the fight song competition at 3 p.m. in Keathley University Center's courtyard, and also in a window decorating competition at 10 a.m.

- The Atlanta Ballet company will give a free performance, complete with its own orchestra, at 8 p.m. in the Tucker Theatre.

Wednesday, Oct. 18

- The ASB is sponsoring a scavenger hunt set for 3 p.m. in front of the Keathley University Center.

- Student Programming is sponsoring a performance by the Count Basie Orchestra at 8 p.m. in Tucker Theatre. The 17-piece band is under the direction of saxophonist Frank Foster, and will feature vocalist Carmen Bradford, both selected by Basie in 1982. The performance is \$8.

Thursday, Oct. 19

- A variety of games and activities will be scheduled for 3 p.m. on the lawn between Peck Hall and the Cope Administration building.

- A Laser Light Rock Concert by Saturn V will take place in Tucker Theatre at 7 p.m. and 9 p.m. The show will feature the latest in state-of-the-art laser entertainment and admission is \$5.

Friday, Oct. 20

- The judging for the residence hall decoration contest takes place at 10 a.m.

- The ASB is sponsoring a bonfire/pep rally at 7 p.m. in the Bell Street parking lot. Immediately following will be a party at The Boro on Greenland Drive.

Saturday, Oct. 21, Homecoming

- MTSU President Sam Ingram will be the annual homecoming parade grand marshal this year. The parade starts at the Greenland Drive parking lot at 9 a.m. and travels down Tennessee Blvd. and west on East Main to the Square.

- At 1:30, MTSU goes against Austin Peay University in the '89 homecoming game. The homecoming queen, winning floats, and various competition winners will be hailed at halftime. Some winners will be announced during third quarter.

- Tickets to the game are \$7.50 in advance for reserved seats and \$8.50 the day of the game.

Please see **HOMEcoming** page 8



Wayne Cartwright • Staff

"Sir Toby Belch," portrayed by Derek Whittaker, locks blades with "Antonio," played by Jeff Swafford, as "Sir Andrew Aquecheek" (Barry King) looks on during a fight scene in *Twelfth Night*. The play, currently being performed by the Buchanan Players, will be held Oct. 12-14 at 8 p.m. at Tucker Theatre.

MTSU authors part of book fest

DARLENE GRAY
Staff Writer

Novelist and MTSU professor Robert Herring, along with English professors Michael Dunne and Charles Wolfe are planning to be a part of the "Southern Festival of Books 1989" which will take place this Friday-Sunday at Legislative Plaza in Nashville.

Herring has penned his third novel and plans to send it to the press any day.

"It's taken two years to write *All the Right People*," said Herring.

The new book is a well-kept secret as far as the contents are concerned. Yet, if the book follows suit it will be a success, as are Herring's other two novels,

McCampbell's War and *Hub*, which received notice from the motion picture industry.

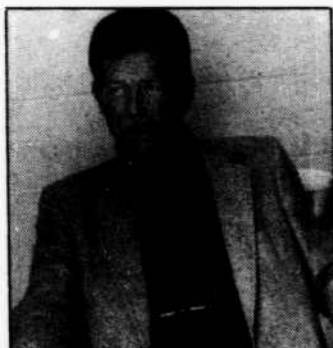
"Hub is under option for a movie by a New York based enterprise," said Herring.

Whether *Hub* makes it to the silver screen or not, Herring is planning to take part in the "Southern Festival of Books 1989."

The Festival of Books will feature a total of 50 Tennessee writers along with former President Jimmy Carter and his wife.

Tom T. Hall, Madison Jones and Wilma Dykeman are other writers who will also be participating in the book festival.

The authors will be giv-



Clara Dougherty • Staff

Robert Herring

ing readings, signing autographs and participating in panel discussions ranging from a Black Writers panel to a discussion of book publishing.

Approximately 40 thousand people are expected at the "Festival of Books '89" and Herring urges all to attend.

For more information on the festival, call the Tennessee Humanities Council, (615) 320-7001. ■

'Twelfth Night' rollicks

AMANDA CANTRELL
Staff Writer

This week the MTSU Buchanan Players are presenting their first play of the fall semester, Shakespeare's "Twelfth Night," which will be performed Oct. 11-14 at Tucker Theatre.

The play, which has a cast of 17, is directed by Dr. Maarten A. Reilingh and assistant student director, Elizabeth Dugger.

"Twelfth Night" is the story of a brother and sister, each of whom believes the other has drowned. The sister, Viola, played by Carol Clark, disguises herself as a man, dressed exactly like her brother, Sebastian. Viola encounters all sorts of problems before she discovers that her brother is still alive, one

of which is being the object of a lady's desires.

The production's large set and elaborate costumes greatly enhance the performance. Members of the cast are elegantly clad in costumer Ann Donnell's creations as they stagger up steps, climb trellises, and leap over platforms.

Comical performances by Barry M. King as Sir Andrew, Derek Whittaker as Sir Toby and David Flaherty as Feste liven this 2½-hour play. Like most Shakespearean comedies, the play contains humorous scenes of drunken frivolity and dramatic sword fights.

"Twelfth Night" begins at 8 p.m. at Tucker Theatre in Boutwell Dramatic Arts Building. Admission is free for students with a valid MTSU I.D. ■

Premier ballet to perform on MTSU stage

KEEVA HAMILTON
Assistant Features Editor

The MTSU Fine Arts Committee is offering the oldest regional ballet company in the United States in a free performance Oct. 17 at 8 p.m. in Tucker Theatre.

With its 1989-1990 season, The Atlanta Ballet celebrates the 60th anniversary of its founding. The company offers us their best works, both favorite classics and highly-acclaimed original works.

Made up of 22 talented dancers from Atlanta and around the world, The Atlanta Ballet is home to prima ballerina Maniya Barredo and principal soloist Nicolas Pacana.

Barredo, originally from the Philippines, arrived in New York in 1970 to study at the American School of Ballet. In 1972, she joined the Joffrey Ballet; in 1979, she joined stars of the

World Ballet, a tour featuring some of the greatest dancers in the world. She was the only American chosen outside New York City for the tour.

Barredo joined the Atlanta Ballet in 1977. With them she has danced in *Giselle*, *La Fille*, *Mal Garde*, *Coppelia*, *The Sleeping Beauty* and *Swan Lake*. Last May she performed the role of Juliet in Tom Pazik's staging of *Romeo and Juliet*. Barredo was a nominee for the International Men and Women of Distinction Award based in London.

Nicolas Pacana has been with the company seven years. Pacana, also from the Philippines, received a scholarship to the San Francisco Conservatory of Ballet and Theatre Arts and studied briefly in Los Angeles.

Pacana has performed on tour in China, Europe and

the Mideast while with the Boston Ballet in 1976.

Since joining the Atlanta Ballet, Pacana has performed the lead role in *Romeo and Juliet*, *Don Quixote*, *Casmina*, *Burawna*, *Coppelia* and *Paquita*.

Pacana has taught for the Southeastern Regional Ballet Association and is a

teacher at the Atlanta School of Ballet.

The Atlanta Ballet not only performs, but also has several outreach programs for the underprivileged and handicapped.

The Atlanta Ballet is well-known for the luxury of its productions on tour, so don't miss this excellent opportunity to see a professional ballet without travel-

ling to Nashville or paying a big ticket price.

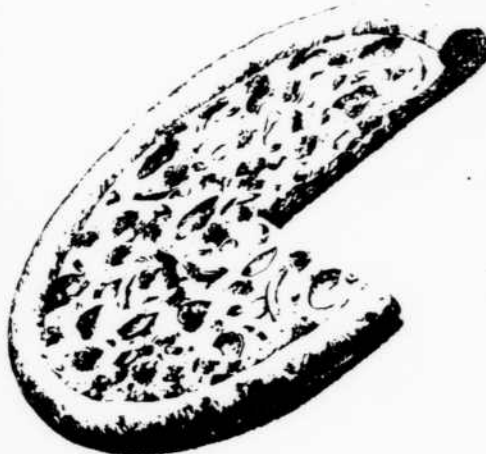
Tickets for the performance are free and may be picked up in the Keathley University Center, Room 308. There is a limit of two tickets per person.

For additional information, call the MTSU Student Programming Office at 898-2551. ■



Nicolas Pacana, a dancer with The Atlanta Ballet.

NOBODY PUTS MORE INTO A PIZZA



MEDIUM CHEEZER
Piled High with $\frac{3}{4}$ LB. of Real MOZZARELLA CHEESE
ORIGINAL CRUST

\$6.49



MAZZIO'S PIZZA

895-TOGO

1624 Memorial Blvd.

895-8646



UNIVERSITY BUYER'S GUIDE

Mid-South Jewelry & Gift
"Quality Jewelry at Wholesale Prices"

Doug Patrick
owner

941 N. W. Broad St.
Murfreesboro, TN 37129
615/890-0093

Throneberry Properties

7 LOCATIONS, OPEN DAILY

OAK PARK 1211 Hazelwood 896-4470	1 BR \$325 1 BR townhouse \$350 2 BR \$395 Fireplace, WD hookups, appliances, water furnished
BIRCHWOOD 1535 Lascassas 896-4470	1 BR \$350 2 BR \$425 Appliances, water, storage room, ceiling fan, W/D hookups
WINDRUSH 1755 Lascassas 893-0052	Studio \$260 1BR \$305 2BR \$350 3BR \$425 W/D hookups.
PINE PARK 1210 Hazelwood 896-4470	Near MTSU 1BR \$295 2 BR \$330 Appliances & water
PARK IV 2225 E. Main 896-4470	1 BR \$295 2 BR \$340 water furnished, WD hookups
HOLLY PARK 2426 E. Main 896-0667	1 BR \$260-280 2 BR \$295 water furnished
ROSEWOOD 1606 W. Tennessee 890-3700	1 BR \$325 2 BR \$365, \$385, \$435, \$460 3 BR \$480 ceiling fans, pool & exercise room, W/D hookups, appliances and drapes furnished

Send fiendishly haunting Halloween cards



by American Greetings



Phillips Bookstore

HOMECOMING from page 6

In conjunction with MTSU's 1989 homecoming celebration, the MTSU Black Alumni Society has a weekend of activities planned.

Events scheduled for the 1989 homecoming include:

- A get-acquainted social/reception, Friday, Oct. 20, at 7 p.m. in Suite 301 at the Garden Plaza Hotel in Murfreesboro, site of all BAS activities.

- Participation in the annual homecoming parade Saturday, Oct. 21. The parade starts at 9 a.m. in the Greenland Drive parking lot.

- A "Late Night Rendezvous," Saturday, Oct. 21, in Salon B & C at 9 a.m.

- Alumni are asked to donate \$10 for the homecoming weekend activities. All donations should be sent to Tanuvene Ligon, 812 Kirkwood Avenue, Nashville, TN 37204, no later than Oct. 13.

For information, contact the Alumni Relations Office, 898-2922. ■

After Hours

Murfreesboro's Nightlife

B & L Pizza

Thurs. - Cows in Trouble, 9:30 p.m., cover
Fri. - Rev. Colin Wade Monk & Bongo Fury w/Seven Painted Hands, 9:30 p.m., cover
Sat. - Cows in Trouble, 9:30 p.m., cover

The Boro

Thurs. - A Band Called Bob, 9:30 p.m., cover
Fri. - Tiger Radar, 9:30 p.m., no cover
Sat. - open-mike jam, 9:30 p.m., no cover

City Limits

Thurs.-Sun. - Darryl & Don Gatlin, 9:30 p.m., cover

527 Mainstreet

Thurs. - Questionnaires w/Swing, 10 p.m., cover
Fri. - The Wizards, 9:30 p.m., cover
Sat. - Clearlight, 9:30 p.m., cover
Sun. - Mercy Rules w/Stiff Kitty, 9:30 p.m., cover

The MTSU Special Events Committee presents

Count Basie Orchestra in concert



Director Frank Foster

LISTEN...IT'S SWING TIME AGAIN!!

8:00 pm, Wednesday, October 18
Tucker Theatre
One performance only - tickets \$8.00

Tickets are on sale at all CentraTik Outlets and on the MTSU campus in KUC room 308 and Murphy Center Athletic Ticket Office. Call the MTSU Concert Ticket Office for more information at 898-2551.

The Special Events Committee Presents



gloria estefan
and
The Miami
Sound Machine

in Concert
8:00 p.m., Sunday, October 29, 1989
Murphy Center

Reserved - \$18.50 General Admission - \$17.50
Tickets on sale 10 a.m. Saturday Sept. 30.

Tickets are on sale now at all Centratik and Ticketmaster outlets and at MTSU in KUC Room 308 and Murphy Center Athletic Ticket Office from 10:00 a.m. until 6:00 p.m. Monday through Friday. MTSU students receive a one dollar discount on each of the first two tickets they purchase at MTSU with a valid ID. For additional ticket information please call the MTSU Concert Ticket Office at 898-2551.

SPORTS

MTSU to face Morehead State

From Staff Reports

After five weeks of conference play, MTSU's Blue Raiders will get back to their Ohio Valley Conference slate Saturday when they travel to Morehead State University.

Both teams come into the game recovering from losses. The Blue Raiders (3-3 overall and 1-0 in the OVC) fell to 14th-ranked Division I-A N.C. State 35-14, while the Eagles (2-3 and 0-1) lost at Murray State 27-13.

MTSU's running attack from the tailback slot, which at one time was the strength of the offense, has suddenly become a concern for Coach Donnelly.

In the team's first three games, tailbacks Joe Campbell and Ricky Martin averaged 126.7 yards per game and scored six touchdowns, but have only averaged 32.3 over the last three with no touchdowns.

"If, for no other reason, we need to re-establish our ground game to make our passing more effective," Donnelly said. "We can't afford to have our opponents

think we must throw the ball to gain yardage."

MTSU's quarterback is still unsettled as Dino Stafford and Phil Ironside continue to share the quarterbacking chores.

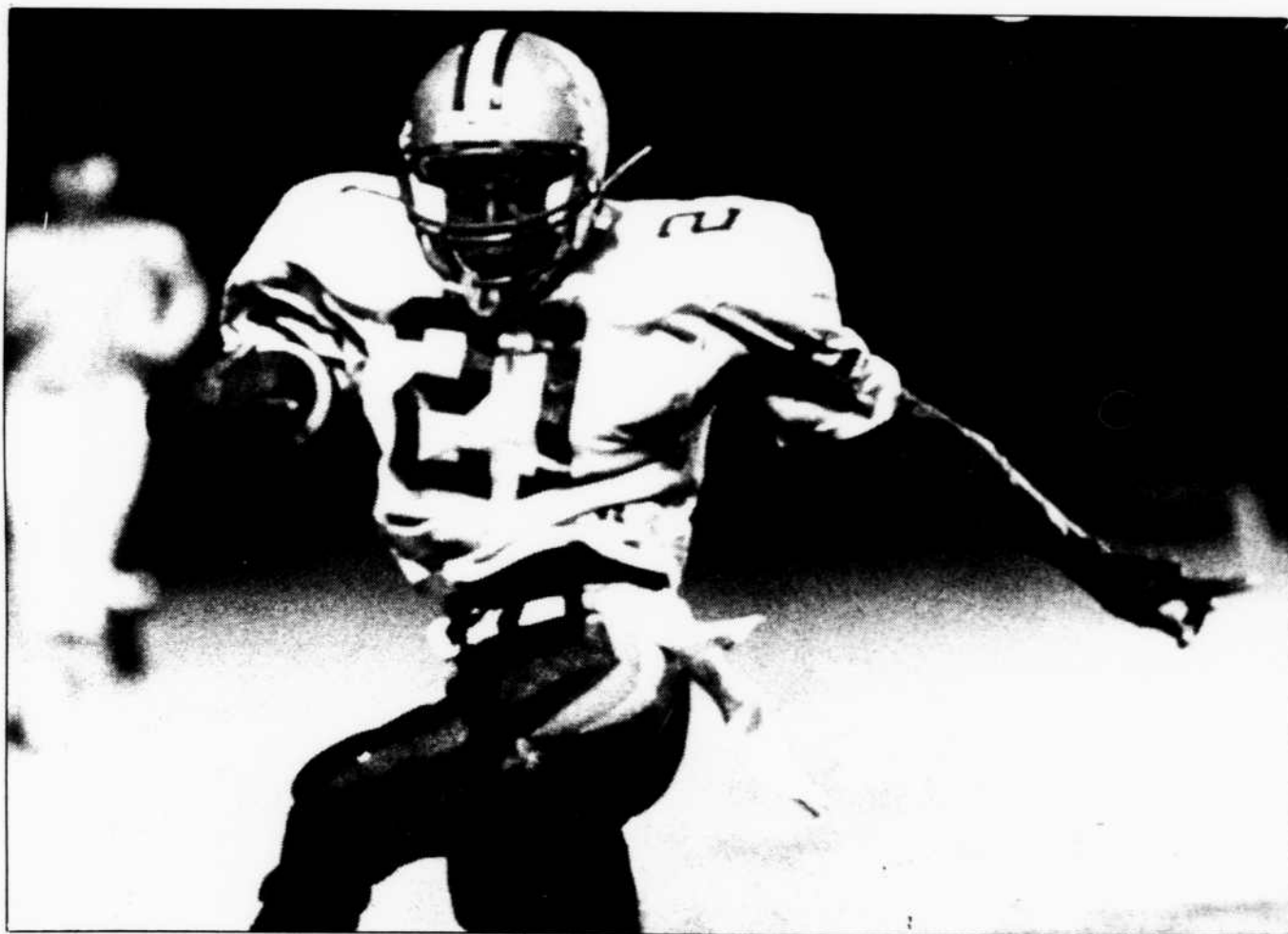
In last week's game, Ironside completed 10-of-15 passes for 207 yards, all in the second half. Stafford was 3-of-9 for 50 yards with one interception.

Morehead's offense presents a concern for MTSU's defense because they can both run and pass the ball effectively.

The Eagles' passing game is already well known with Chris Swartz calling the signals. Swartz holds Morehead's school record for career completions, a record previously held by New York Giants quarterback Phil Simms. This season Swartz has completed 90-of-172 attempts for 1,185 yards with only five interceptions.

"We just finished playing against one of the country's top passers [N.C. State's Shane Montgomery],"

Please see **OVC** page 11



Stepping up...

Tailback Joe Campbell runs the ball in a game at Western Kentucky earlier this season. Campbell leads MTSU in rushing this season with 312 yards in the team's six games.

Wayne Cartwright • Staff

Campbell and the Blue Raiders will be trying to get back on the winning track when they travel to Morehead State Saturday for an Ohio Valley Conference clash with the Eagles. Game time in Morehead is set for 12:30 p.m.

Club Med takes flag football title

KEN SALTER
Editor

Club Med surprised themselves as well as their opponent, the Kappa Sigma fraternity, as they won the men's flag football championship, 33-26.

"I didn't think we had a chance to beat these guys," Kevin Sutton, quarterback of Club Med said. "I'm really surprised we won."

Kappa Sigma entered the game 8-0 and were favored to win, while Club Med was a heavy underdog despite entering the game with a 7-1 record.

Club Med scored with less than one minute left in the game after Kappa Sigma had scored to tie the game with about 1:35 remaining.

Sutton hit receiver Paul Jewell and he scored from about five yards out for the deciding score.

Club Med added the

conversion to make the score 33-26.

"They didn't rush much, so it was easier to get open," Jewell said. "Our quarterback is quick and that helped a lot."

Sutton kept the Kappa Sigma defense off-guard throughout the game as he posed a double threat to both pass and run the ball.

After Club Med led 20-13 at halftime, each team traded scores early in the second half before Kappa Sigma tied the game and added the conversion to tie the game at 26-26.

Although they consistently drove down the field against Kappa Sigma defense, Sutton admitted their offense wasn't planned out.

"We didn't really have an offense," he said. "We made it up as we went along. If I saw someone open, I threw him the ball. If I didn't, I ran." ■



Clara Dougherty • Staff

breaking it up...

Kappa Sigma's Keith Gibbons blocks a pass intended for Sigma Chi player earlier this week. Kappa Sigma won

the game 13-0. Last night, however, Kappa Sigma lost to Club Med in the championship game 33-26.

Walk-on Donaldson finds success at MTSU

ANNE CLAIBORNE
Staff Writer

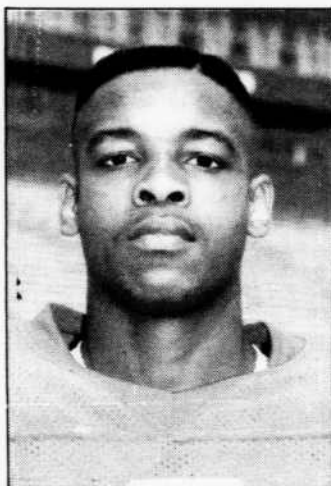
MTSU receiver Kenny Donaldson came to the Boró by riding on the coat-tails of his big brother Tony, but the junior has made a name of his own.

Donaldson is a favorite target of the Blue Raider quarterbacks which is made obvious through his statistics this season.

He has 19 receptions totaling 332 yards including two touchdowns, one against I-A opponent North Carolina State this past weekend.

But what makes Donaldson's story so interesting is that he came here as a walk-on with quarterback brother Tony, who was signed on scholarship but couldn't make the grade.

"My initial reason for coming to MTSU is because my brother brought me here," Donaldson said. "We were both to be on scholarship at Ohio University, but they backed out on signing day. Our coach (John Turco) had sent films to Coach Donnelly so he could



Kenny Donaldson

look at Tony. I was catching the passes he was throwing, but they weren't watching me.

"We were a combination in high school, and we were hoping that we could do the same here. Tony just got in over his head as far as academics went."

Tony left the team before the 1986 season.

Donaldson is one of ten children from the Youngstown, Ohio family and attributes a lot of his success to the situation at home.

"I think coming from a big family helped."

Donaldson said. "I feel like I served as a role model to my younger brothers and sisters both academically and athletically. That fact really pressured me to do well."

"The whole family comes down on Homecoming. It's become an annual visit."

It hasn't been an easy road for the Psychology major in that he had to wait in the wings while former Raiders Garrett Self and Robert Alford played out their eligibility, but through the support of several teammates, Donaldson was able to stick out those hard times.

"I thought about leaving the team a bunch of times," he said. "It used to affect my playing, but people on the team like Chuck (Swafford), Greg (Pollard), and Andre (Dyer) taught me to roll with the punches. I got to be good friends with them and didn't want to leave."

"I kept thinking 'I know I can play', and they kept telling me to stick with it."

Please see **TOP** page 11



Sandra Rennie/Staff

Up and over...

Womens track team member Koko Rowley, a freshman majoring in Political Science, practices the high jump for the team's time trials Nov. 1.

Collage

MTSU's Creative Arts Magazine

Is now accepting submissions!

If you would like some recognition for your talents
We strongly encourage students to submit works of
Literature
Art
B&W Photography
Deadline for submissions is
October 13

Submission Requirements

All work should be delivered to the Student Publications Office on the third floor of the JUB and labeled with the following: Artist's name, phone number and P.O. Box number, title of the work and type of work.

Art work: Should be mounted if possible, and have a label stating the title of the work and the medium.

Literature: All pages should be stapled with a cover page containing the above information. Should be typed or neatly printed. Should be 1500 words or less.

Photography: Should be mounted (preferably on white board), with a label on back containing the above information and special techniques, used if any.

Please be assured that we will do everything in our power to make sure that all works will be returned to the artists.

If you have any questions concerning Collage please feel free to contact us at 898-2815 or come by the Student Publications Office in the JUB. You may also contact Rita Robertson, Editor-in-Chief, at 898-4766.



University Park

**Call about our semester rates!
Two Bedroom Apartments
Monthly - \$315**

Free basic cable, HBO, swimming pool, laundry facilities and pay phones.
Located two blocks from campus.
Now taking applications and deposits for Spring semester

**FOR MORE INFORMATION CALL
893-1500**



Sir PIZZA

**"We Go Over
The Edge for You!"**



TUESDAY NIGHT SPECIAL

2 for 1 Pizza (Dine in only)

**5:30-8:30
1902 E. MAIN
893-2111**

MON. and WED. NIGHT BUFFET

Salad bar, Spaghetti,
Meatballs and Pizza
\$3.59 5:30-8:30

1514 N.W. BROAD 896-2410

Briefly:

Babes bounced from b-ball fest

Following a request from the MTSU Administration, changes have been made to the Blue Raider Basketball team's Midnight Beach Madness scheduled for Saturday night.

Leading the changes is the cancellation of the bikini contest which was scheduled for 11 p.m.

"There were administrative requests which we agreed to adhere to," coach Bruce Stewart said. "They were afraid the bikini contest might get out of hand."

To replace the bikini contest there will be two money scrambles and a shootout for a new car, according to MTSU Sports Information Director Ed Given.

"We are going to spread \$250 out on the floor," Stewart said. "Then we will blindfold someone and let them keep whatever money they find."

The money scramble and shootout will follow the soccer which is scheduled to begin at 9:30 p.m.

Capping off the nights events will be the introduction of the 1989-90 Blue Raider mens basketball team followed by a dunking exhibition and 20-minute scrimmage. ■

Randy Henry cut by NBA's Jazz

Former Blue Raider basketball standout Randy Henry was cut by the Utah Jazz earlier this week. Henry was the leading scorer for the Blue Raiders last season averaging 22 points per game. ■

Division I-AA poll

By the NCAA Division I-AA Football Committee, with first-place votes in parentheses, records through Sunday, total points and last week's ranking:

	Record	Pts	LW
1. Eastern Kentucky(3)	5-0	79	1
2. Georgia Southern(1)	5-0	77	2
3. Holy Cross	5-0	69	3
4. SW Missouri St.	6-0	68	4
5. Furman	5-1	67	4
6. Maine	6-0	59	8
7. Citadel	4-0-1	57	7
8. Appalachian State	5-1	52	9
9. Arkansas St.	3-2	48	10
10. S.F. Austin State	4-1	42	12
11. Boise State	3-2	41	11
12. Jackson State	5-1	36	13
13. Northwestern St., La.	4-2	29	NR
(tie) William and Mary	3-1-1	29	NR
15. Idaho	4-2	21	20
16. North Texas	3-2	18	4
17. Liberty	4-0	17	NR
18. Youngstown State	3-2	16	NR
19. Murray State	4-2	11	NR
20. Eastern Illinois	4-2	1	19
(tie) Marshall	3-2	1	16
(tie) Montana	4-2	1	NR
(tie) Yale	3-1	1	NR

OVC Standings

Team	OVC	Overall
Eastern Kentucky	2-0	5-0
Tennessee Tech	1-0	3-1
Middle Tennessee	1-0	3-3
Murray State	1-1	4-2
Morehead State	0-1	2-3
Austin Peay	0-1	0-6
Tennessee State	0-2	2-4

TOP from page 10

"I want to be the player that when it's third down and we need some long yardage, everybody looks to me for the big catch."

Despite the long wait the 21-year-old had to endure, he in no way lacks the team leadership needed in order for the Raiders to pull off a conference championship.

"I'm automatically motivated when I step on the field," he said. "I hate to lose and try to do whatever I have to do to win. I just can't let someone continuously beat me."

Donaldson's uncle Terry Taylor, a defensive back for the Detroit Lions, has served as his "initial role model as far as athletically," but the Blue Raider has admiration for another NFL athlete that he would like to play with.

"I'd like to be on the receiving end of a Randall Cunningham pass (of the Philadelphia Eagles)," he said. "He's the type of quarterback I would like to play for."

OVC from page 9

Donnelly said. "But we've got to understand we're going against another top-notch thrower this week."

Morehead's ground game is also dangerous with two running backs, Anthony Jerdine and Jerome Williams, that are capable of running for over 100 yards in a game.

"The problem for our defense is that Swartz is not their only weapon," Donnelly said. "They have two of the OVC's finest running backs in Jerdine and Williams."

Defensively, MTSU will be looking to improve on their third down play as N.C. State was successful in converting third and long situations several times.

"When you get an opponent in third and long," Donnelly said, "you ought to be able to stop them a majority of the time. If you don't, you're in trouble. We didn't, and we were."

Game time in Morehead, Ky., is set for 12:30 p.m. (CDT). ■

Dr. David Ours

Board Certified Family Practitioner

Student, Student Families, and Faculty welcome. Same day appointments. Dr. Ours has considerable experience in student health including providing care to students at the University of Tennessee, Knoxville & Embry-Riddle Aeronautical University, Prescott, Az.

620 East Clark Blvd.

Murfreesboro

895-2527



Office Hours By Appointment

The Student Publications Committee

is now accepting applications for

Spring Sidelines Editor

Candidates must have a 2.5 GPA, must be full-time MTSU students this semester, and must plan to enroll for at least nine hours of coursework each semester they serve as editor.

Applications are available in Room 306 of the James Union Building. A transcript and three letters of recommendation are required. Deadline is 4 pm Oct. 27. For more information please call Jenny Tenpenny Crouch, Student Publications Coordinator, at MTSU ext. 2338.

Interviews and selection are scheduled for Nov. 3.

HOWARD JOHNSON

Murfreesboro
Exit 81A - US 321 So.

25%

discount to

MTSU students & employees, and their families, & visitors.

Call 896-5522 for reservations

Please identify affiliation with MTSU for discount.

May not be used in conjunction with any other discount

STUDENTS No Place to Live? Call Us!

Ruth Hollingsworth
Broker

1, 2, Bedroom Apts - Houses Close to Campus

CAFFEY REALTY
& AUCTION CO.
826 Memorial Blvd.
Murfreesboro, TN 37130
896-1500

CRAZY BENNY SPEAKS... AGAIN.

PERHAPS...

WOULD YOU PLEASE EAT IMELDA (FISHFACE) WATSON

4015H MEMBER OF KOALA CENTER FAN CLUB A CONCERNED CITIZEN.

IMELDA WENT TO ALL OF THE REALLY MAJOR SOCIAL EVENTS.

WHAT A LOVELY DINNER THIS WILL BE.

ISN'T SHE DRESSED WELL?

IMELDA IMELDA'S MOUTH WHILE CHEWING

SHE ALWAYS USED PROPER MASTICATION TECHNIQUE.

MAGNIFIED PICTURE OF IMELDA PROPERLY CHEWING ROAST.

SHE WOULD CLAP USING THE TIP OF HER RIGHT HAND ON THE PALM OF HER LEFT, THUS ISSUING A SURPRISINGLY PLEASING TIMBRE.

WHAT A LADY.

THOUGH SHE WATCHED 20/20 WITH PATRIOTIC FERVOR, SHE DID NOT EXPECT IT THE DAY SHE WAS BEATEN & ROBBED SEVERELY, WHILE BEING FORCED TO PLAY "UNO" FOR 3 DAYS WITHOUT SLEEP IN A CRACK INDUCED HAZE.

IMELDA FREAKED OUT AND PUT ACID IN THE PUNCH BOWL AT A CONGRESSIONAL DINNER.

WAY TO GO GIRL!

WELL, PERHAPS NOT.

THERE IS NO END TO A STORY THIS IS THE END OF THIS STORY

The 1990 Midlander will be shooting "The Big Picture" in the KUC courtyard on Tuesday, October 17 at 3:00 (prior to Fight Song Competition). ANYONE interested in being pictured in the 1990 yearbook is welcome to attend.

WHERE: KUC courtyard
3:00 pm

DATE: Oct. 17, Tues.

"I'LL JUST BRACE MYSELF WITH THE STEERING WHEEL"



CLASSIFIEDS

Help Wanted

HELP WANTED

Part-time outside sales representative for automotive repair center. Flexible hours, excellent pay. Need aggressive individual. For information and consideration call 896-1881 or 890-8863.

College Students, Personable, Extroverted, aggressive and dependable individuals are wanted to get consumers opinions on various products and services in Hickory Hollow Mall. Call 834-0900, Monday thru Friday 11 am - 4 pm. Flexible hours. Day, Evening and Weekend shifts available.

ATTENTION BUSINESS MAJORS! Good extra income work part-time after school with National Corp. Scholarships awarded. Internships available. Filling 15 positions created by students transferring out of state. Call M/F 10-4, ask for Wendy at 1-391-4640.

ATTENTION: EARN MONEY READING BOOKS! \$32,000/yr income potential. Details: 1-602-838-8885 Ext. Bk 8820.

JOB OPPORTUNITIES IN AUSTRALIA! Openings available in several areas, will train. For information call: (312) 742-8620 ext. 1104.

THINK SPRING - Out-going? Well-organized? Promote & Escort our FLORIDA SPRING BREAK trip. GOOD PAY & FUN. Call Campus Marketing, 1-800-423-5264.

THE FUTURE IS YOURS...

New education features for U.S. Savings Bonds can benefit adults as well as children. If you have plans for future education for yourself or your spouse, ask your canvasser about possible tax benefits on U.S. Savings Bonds purchased after January 1, 1990.

For Sale

ATTENTION-GOVERNMENT HOMES from \$1 (U-repair). Delinquent tax property. Repossessions. Call 1-602-838-8885 EXT G118820.

ATTENTION-GOVERNMENT SEIZED VEHICLES from \$100. Fords, Mercedes, Corvettes, Chevys. Surplus Buyers Guide. 1-602-838-8885 EXT A8820.

20% STUDENT AND TEACHER DISCOUNT on Office & School Supplies marked with a white tag in our store. **SPECIALS:** 24x30 combination drafting table or student work table - \$35.00, desk stool - \$6.00, 1 dozen no. 2 school pencils - \$.50, Hydraulic secretarial chair - \$39.00, Walnut student desk - \$69.00, 4 drawer Hon letter size file - \$109.00, 2 drawer Hon letter size file - \$79.00, student 5 shelf bookcases - \$29.00, 30x96 Blemished folding table - \$39.00, Ambassador Printing Inc. 1103 NW Broad St. Murfreesboro, 890-5100.

FOR SALE
Eight-foot boa constrictor. \$300 or best offer. Only serious calls please. Call 895-0301, ask for Sandra.

Classifieds Get Quick Results

For Rent

FOR RENT: 2 bedrooms, ceramic bath, hardwood floors, newly remodeled, professionally decorated, garage parking, double security, 903 E. Lytle, \$375/month, \$100/deposit. 896-4154; 896-4384.

FOR RENT: One bedroom, hardwood floors, professionally decorated, newly remodeled, 323 N. Spring, \$325/month, \$100 deposit. 896-4154; 896-4384.

Services

TRP WORD PROCESSING—Term papers, resumes, theses, letters. Quality work, reasonable rates. Call 890-2782.

Kim's Karate-Member American-Moo Duk Kwan-Tang Soo Do Assoc. Michael Green, 4th Degree Black Belt, Certified inst. 118 Front St. Smyrna. 355-4349.



"This Is It..."

The last days to pick-up your 1988-89 Midlander.

Staff members will be located outside Phillips Bookstore from 10 am - 2 pm Thursday and Friday for your convenience.

Orders will also be taken for the 1989-90 "Better Than Ever" yearbook.

If you do not pick up your yearbook, by Friday, we cannot guarantee availability after that time.

SIDELINES

DISPLAY ADVERTISING

is available on a per-issue basis at the rate of \$4.75 per column inch, and \$3.75 per column inch for on-campus departments and organizations. Lower contract rates are available for those who wish to advertise on a regular basis

CLASSIFIED ADVERTISING

is available for \$3.00 per ad, per insertion. Classified must be paid for in advance and can be arranged by stopping by Room 306 of the James Union Building.

DEADLINE for all advertising in MONDAY issues is noon the preceding Thursday. Ads to appear in THURSDAY issues must be turned in by noon the preceding Monday

For further information please call 898-2815 or stop by the James Union Building Room 306. Mail-in advertising can be accepted by non-local customers with correct insertion order if mailed to SIDELINES, Box 42, MTSU, Murfreesboro, TN 37132