

## Water shortage a crisis

By MARK FEARING  
Staff Writer

Murfreesboro Mayor Joe B. Jackson declared a level one water emergency shortage Wednesday, restricting non-essential water use.

A level one emergency restricts citizens from washing cars, watering lawns, filling swimming pools or hosing down parking lots, driveways or sidewalks. Any deviation results in a first-time warning, but if violations continue, the city can disconnect the customer's service. Police will enforce the restrictions.

Murfreesboro is faced with a three-year drought and no immediate solution.

Bill Smotherman, Middle Tennessee State University physical plant director, said MTSU is voluntarily doing its part to help conserve water. In order to help alleviate this problem, the university is taking measures to reduce water consumption on campus.

"We plan to cut out every wasted drop of water," Smotherman said.

To conserve water on campus MTSU has closed the motor pool car wash.

"We are not watering plants and

flower beds or sports fields with city water. Water is trucked in from the west fork of the Stones River. It is important for the university to be a leader of the community and to do our part," Smotherman said.

"If we can't stop wasting water, all of us will receive restrictions later," he said.

MTSU, with its large student population, is one of the major consumers of water in Murfreesboro, Smotherman said.

"We need to raise the awareness of the 3,400 resident students living on campus. Students in campus housing need to conserve water where possible," housing director Ivan Shewmake said.

There are three campus maintenance teams doing thorough checks of all pipes and faucets for possible water leaks in academic and administrative buildings, said Smotherman.

"Leaky faucets are just a waste of water," Smotherman said. "These checks will get top priority from maintenance."

Smotherman said that levels at Walter Hill Dam have dropped nearly a foot below the crest since

the beginning of last week. Water levels at the dam are falling an inch and a half per day. If the water level falls to two feet below the crest, this could have serious consequences for Murfreesboro.

If water levels fall to five feet below the crest, it could force the mayor to restrict laundromats, car washes and other water-dependent businesses to 70 percent of normal use.

Murfreesboro has broken water use records each month this summer. Consumption for July was 205 million gallons. August broke this record with 214 million gallons.

MTSU students could help alleviate water consumption by observing restrictions imposed by the mayor, Shewmake said.

If the drought continues to be severe, city ordinances allow the mayor to close down schools and industries depending on the amount of water used in the facilities.

Murfreesboro and surrounding areas went through the last water shortage in 1981 when the water level dropped four feet below the dam's crest.



Frank Conley

Charity car washes like this one held by the Kappa Delta sorority last Tuesday should cease during the water emergency. Murfreesboro is 27 inches below normal in rainfall this year.

## ASB Cabinet plans many changes to improve some campus services

By BRIAN CONLEY  
Staff Writer

Dollar bill changers in dorms, a student support group and unification of all campus ministries were some of the ideas presented at yesterday's Associated Student Body cabinet meeting.

Members of ASB President Holly Lentz's cabinet met yesterday afternoon to begin planning these and other campus-improvement projects.

Ginger Murphy, director of academic affairs, said she will attempt to convince area banks to install automatic teller machines on campus to facilitate access to accounts for students who cannot leave campus.

Dollar bill changers need to be put in dorms because students have no means to get change other than to "buy \$6 worth of coke to get \$3 worth of change" in the coke machines, Murphy said.

Linda Nunn, foreign student director, said she will work on a program to help Middle Tennessee State University from other countries get to know others of their own nationalities.

Students who need guidance

have someplace to go to get answers once the Student Support Group is established by Todd Burnett, director of student affairs.

Burnett said he will also work to revive the spirit fraternity on campus, Sigma Theta Phi.

Since students may not know when some of the sporting events on campus will take place, the schedules for the teams may be mailed to every student's box, Amy Jackson, athletic liaison, said.

Jackson also discussed ideas to get people to stay on campus for the weekend football games, such as pep rallies and a pre-game dance for every game.

"Maybe if we keep everybody up Friday night at a dance they will stay for the game on Saturday and leave Saturday night," Jackson said.

The presidents' club, started by last year's ASB president Troy Baxter, is getting organized, club director Shari Taylor said.

Taylor said she is working on the

organization's constitution.

Hunter McFarlin, campus ministry director, said MTSU's campus ministries need to unite and that he will work to create an activity to "get interaction between the different groups."

The Handicapped Student Services Office is planning a state-wide wheelchair tennis tournament for the weekend of Sept. 19, Randall Witt, handicapped student director, said.

Officials are attempting to get a van equipped with a handicapped lift to assist students in getting around campus, Witt said.

"We could have a fundraiser like a wheelchair rodeo involving the fraternities and sororities to raise money for the lift," Witt said.

Lentz, Chief of Staff Jo Willey and Burnett will appear on the Muscular Dystrophy Association Telethon next weekend to present the check from last year's homecoming chili cook-off.

## Apartments damaged by fire

By BRIAN CONLEY  
Staff Writer

A faulty water heater may have caused a fire at University Park Apartments that destroyed one apartment and damaged two others, fire officials said.

Fifteen firefighters from three engine companies and one snorkel unit worked for two hours Tuesday to extinguish the 10:30 p.m. fire at the Greenland Drive complex, inspector Ken Honeycutt of the Murfreesboro Fire Department said.

"We think it was a faulty water heater," Honeycutt said. He added that while he could not determine how the fire started, the heater probably shorted out.

The estimated cost of damages

has not been determined yet, Honeycutt said.

"We haven't gotten with the apartment manager and done any dollar amounts yet," he said.

However, there was "heavy damage to that one apartment and smoke damage to a couple apartments upstairs," the inspector said.

Vida O'Brien, the property manager at University Park, confirmed the damage.

"The one apartment was pretty well wiped out," she said.

The tenants in the apartment were relocated to another unit that night, O'Brien said.

O'Brien said it is a renter's responsibility to carry insurance to cover their belongings.

## Lord Chancellor Hailsham to speak at Murphy Athletic Center to 7,000

By SYBIL HENLEY  
Staff Writer

Lord High Chancellor, Lord Hailsham of the United Kingdom will speak Sept. 18, at 10 a.m. in the Murphy Athletic Center for the Constitutional Bicentennial Celebration.

Lord Hailsham was invited by the Rutherford County Bicentennial Commission as part of the events planned to celebrate the 200th anniversary of the Constitution of the United States.

Lord and Lady Hailsham will arrive in Murfreesboro at 8:45 a.m., according to Thomas VanDervort, chairman of the Rutherford County Bicentennial Commission and a professor in the Middle Tennessee State University political science department.

The celebration, which is expected to draw 7,000 students, will begin at 9 a.m. with a parade rout-

ing from downtown Murfreesboro to MTSU's Murphy Athletic Center, VanDervort said.

"Lord Hailsham is the great-great grandson of the founder of Murfreesboro — Capt. William Lytle," Vandervort said.

Lytle donated the land for the downtown area of the Rutherford County seat.

Hailsham currently holds the oldest secular office in the British realm — older than Parliament, older than the present line of monarchy. He has served in the British cabinet as Lord President of the Council, as First Lord of the Admiralty, as chairman of the Conservative Party, as minister of education and as minister of science and has been a member of both the House of Commons and the House of Lords.

From 1847 to 1849, Hailsham's great-grandfather, Neill S. Brown, was governor of Tennessee, and later served as United States Minister to Russia. His mother was a native Nashvillean.

On July 30, 1987, Rutherford County was officially designated a bicentennial community by former Supreme Court Justice Warren E. Burger, chairman of the National Commission on the Bicentennial of the United States, VanDervort said.

MTSU has also been designated a bicentennial campus by the national commission, he said.

"The major goal of the Rutherford County Bicentennial Commission is to heighten awareness and deepen the understanding of our constitution — the freedoms it guarantees and the civic responsibilities necessary to its preservation and vitality," VanDervort said.

## Tennessee wants Collider

By JERRY OSBORNE  
News Editor

A press conference outlining Tennessee's proposal for the \$4.8 million Superconducting Super Collider was held Tuesday in the James Union Building.

The formal proposal (an 11-volume, 900-page document) was presented to the U.S. Department of Energy in Washington D.C. at the same time, Carl Johnson, commissioner of Economic and Community Development, said.

"This area has a low risk of earth tremors; that's one of the reasons we have such a strong proposal," Johnson said.

Other positive points cited during the news conference is this area's proximity to educational, cultural and recreational resources, as well as air service and other transportation.

The proposal was drafted by a 60-member team during the past five months, and proposes that the site of the facility be located in portions of Rutherford, Bedford, Marshall and Williamson counties, Johnson said.

"The site chosen by our proposal team is environmentally sound," Gov. Ned McWherter said in a cover letter to the proposal to the Department of Energy (DOE), and would allow construction of the SSC's 53-mile-long oval collider

ring to proceed with minimal surface disturbance.

In accordance with provision in the DOE's invitation for site proposals, McWherter said, the state would donate 7,750 acres of surface rights and 8,150 acres of subsurface rights for the Superconducting Super Collider, as well as provide

improvements to the site infrastructure. Those improvements would include access roads to the site, connections to existing public water, waste water treatment and gas utility, facilities, an office-laboratory-classroom building for visiting scientists and specialized training for technicians to be employed

at the facility.

The Superconducting Super Collider will employ about 4,500 workers during six years of construction, about 2,500 permanent employees and 500 visiting scientists after it is completed, Johnson said.



Wayne Cartwright

Carl Johnson (l), John Crothers and David Patterson (standing) answer reporters' questions at Tuesday's press conference on Tennessee's proposal for the Superconducting Super Collider.

## Attention Campus Organizations

The requirements for registration of student organizations state: There shall be a required orientation session of presidents of campus organizations early in the semester, in which MTSU policy governing the operations of student organizations will be explained. In order to meet this requirement, the president/representative of each organization is invited to attend one of the three scheduled orientations for student organizations. The meetings are scheduled for the following times: Monday, Sept. 21 at 3 p.m. in Room 322 Keathley University Center, Tuesday, Sept. 22 at 4 p.m. in Room 322 Keathley University Center and Wednesday, Sept. 30 at 3:30 p.m. in Room 322 Keathley University Center. Those organizations not meeting this requirement may be declared inactive for the 1987-88 academic year. Call 898-2987 if you have any questions.

# Campus Capsule

Student organizations desiring to file an application for Activity Fee Funds for the fall semester of 1987 may secure applications in Room 126 Keathley University Center. The deadline for completing and returning the application is Sept. 18.

Freshman Records are available in the Associated Student Body Office, Room 304 Keathley University Center, 8 a.m.-4:30 p.m. Monday-Friday.

The Placement Office will conduct career placement orientation for seniors and graduate students on Monday, Sept. 14, at 3 p.m. and Tuesday, Sept. 15, at 3 p.m. in Room 324 Keathley University Center. Students interested in participating in the campus interview program should attend this orientation.

**Campus Capsule Policy**


Items which will be considered for inclusion in this space should be limited to official university announcements of interest to students, faculty and staff or notices of meetings, events and opportunities for university recognized groups. Publication of any announcement in this space is at the discretion of the editor.

Persons wishing to publish announcements of commercial ventures-including fundraisers — should contact Evelyn Dougherty, *Sidelines* advertising manager, extension 2533 for information regarding classified and display advertising rates. If you need assurance of publication, place an advertisement in *Sidelines*.

**An unexpected pregnancy is a hard thing to face.**

893-0228  
FREE ... CONFIDENTIAL

GRANDPARENTS DAY



Because they're special people... you'll want a special Grandparents' Day card from American Greetings that expresses your feelings of love and caring.

**PHILLIPS BOOKSTORE**

AMERICAN GREETINGS

JUNIOR VARSITY CHEERLEADING AND MASCOT TRYOUTS



COME AND BE A PART OF A GREAT TRADITION!

MEETING	WED. SEPT. 9 4 p.m. ROOM 305 KUC
TRYOUT	THURS. OCT. 1

FOR MORE INFO  
CALL 898-2750

**MTSU vs. TSU**  
September 5, 1987

**FOOTBALL GAME TICKETS  
NOW AVAILABLE**

**Reserve Seats \$12.00**  
**MTSU Students \$6.00**  
(Limit 2 per valid I.D.)

**MTSU Athletic Ticket Office**  
**Northeast Corner,**  
**Track Level**  
**Murphy Center**  
**898-2103**



*Student Tickets are also available in KUC 308 office of Student Programming*

**BASIC programmability—  
at a budget price.**



**The TI-74 BASICALC™**  
**is powerful, flexible, friendly...and economical.**

The TI-74 BASICALC™ calculator gives you more programmable problem-solving power than any other calculator at a comparable price.

It's both an advanced scientific calculator—with 70 functions—and a BASIC programmable calculator—with 92 commands.

It's "user-friendly" because you program it in simple, straightforward BASIC language (anyone with a fundamental knowledge of BASIC can use it). And its capacity is considerable: 8K bytes of built-in RAM, and another 8K available in an optional cartridge.

A typewriter-style elastomeric "positive-action" keyboard helps prevent missed or double entries. Display shows 31 large alphanumeric characters (scrolls left or right to 80) and 14 status indicators.

All of this in a truly portable battery-powered package just 4.2 x 8.3 x 1.3 inches.

Optional accessories include a 24-column, battery-operated thermal printer (PC-324), a Constant Memory™ 8K RAM cartridge that retains data even when removed from the TI-74, and an interface cable that lets you use a standard audio cassette recorder for data storage.

Currently available software cartridges include: *Learn Pascal*, *Statistics*, and *Mathematics*.

**\$98.95**

**PHILLIPS BOOKSTORE**

**The most successful college graduates have a uniform appearance.**

Dress for success.

Enroll in the Army Reserve Officers' Training Corps, and you could graduate with the privilege of wearing the proud gold bars of a second lieutenant as well as a cap and gown.

Army ROTC is the college elective that gives you an opportunity to learn, and practice, management skills. Experience leadership styles and motivational techniques. And gain the self-confidence that can spell success in any career, civilian or military.

Start that career with the advantages only Army ROTC can give you. Talk to your Professor of Military Science, today.

**Contact Major Walter Surprise**  
**898-2296**

ARMY RESERVE OFFICERS' TRAINING CORPS

# Long distance service offered

By DAVE CUTRONA  
Staff Writer

A new long distance telephone service is now available at Middle Tennessee State University, Tom Burks, director of telecommunications and computer services said today.

Star 1 service enables residential students to make long distance phone calls from their dorm or university apartment at any time of the day or night, Burks said.

"Students using the MTSU Star 1 service will receive a monthly itemized long distance list from the Office of Telephone Services," Dianna Reeves, operations manager, said.

"Calls will be billed at direct-dialed rates based upon destination, the day, the time of day and number of minutes on the line. You pay for the call and that's all," Ivan Shewmake, director of university housing, said.

"To place a call through the Star 1 service, the student must dial 1,

listen for the special tone, then dial the seven-digit authorization code given to the student. After receiving a dial tone again, dial 9-1-area code (if not 615)-and the phone number," Harold Sloss, PBX manager, said.

The seven-digit authorization code is issued to the student for accessing the Star 1 service and must be kept confidential to avoid use by unauthorized individuals. Unauthorized use of code numbers to place calls constitutes a theft of services and is in direct violation of state and federal law, Reeves said.

"These violations will result in MTSU disciplinary action up to and including withdrawal from university housing and suspension," Reeves said.

"If a card is lost or stolen, the student should notify the Office of Telephone Services immediately," Sloss said. "The student will be responsible for all unauthorized calls made prior to notification."

"In an attempt to control costs

and reduce opportunities of fraudulent use," Shewmake said, "the long distance credit limit of a student may not exceed \$100. Students will be notified when charges reach \$75; at \$100, the code will be deactivated until payment is received."

Call-detail (itemized) statements will be issued at the end of the month for all calls placed from the 26th of one month to the 25th of the next. The statement shows all details of the long distance calls and will be mailed to the student's campus address, Reeves said.

Any questions about the statements can be answered at 898-4636. Office hours are Monday through Friday, from 8 a.m. to 4 p.m.

The MTSU Business Office will send the statement of account at the end of the month indicating the total amount due for calls during

the particular billing cycle. It is due on receipt, Burks said.

"If payment is not made in full within 15 days of billing date, the service will be discontinued, requiring a \$10 charge to reinstate the code. Furthermore, nonpayment of bills will bring about serious repercussions affecting registration and release of grades," Reeves said.

The rate schedule is as follows: weekdays from 8 a.m. to 5 p.m. cost full rate; weekday evenings (excluding Saturday) include a 35 percent discount; Monday through Sunday between 11 p.m. and 8 a.m. and Saturday through Sunday between 8 a.m. and 5 p.m. include a 60 percent discount.

"It is best to plan your calls in the discount rate time to obtain the most benefit from the service," Sloss said.



**\$3 OFF ANY  
LARGE PIZZA**

**\$2 OFF ANY  
MEDIUM PIZZA**

1618 NW Broad St. 2018 Mercury Blvd.  
896-3782 896-0657

one coupon per party per visit at participating Pizza Hut restaurants. Offer good only on regular menu prices through 9/21/87

**MARK YOUR CALENDAR**

**Yearbook Portraits will be made  
SEPTEMBER 14-25**

Undergraduates: KUC Lounge 8:30-5:30  
Seniors: Sept. 21-25 Only

Watch *Sidelines* for times, place and appointment information.

You're not alone . . .



call us for help  
**Dial 896-HELP**

**You won't find:**  
A 700 foot Jesus,  
A Christian Waterslide,  
An air-conditioned doghouse  
or closed minds  
**At the Baptist Student Union**

**You will find:**  
A warm welcome from new friends,  
A place for meaningful involvement,  
Freedom to question and discuss  
And ministry with integrity.

**Come on over!**  
**Baptist Student Union**  
**619 N. Tenn. Blvd.**  
Black Student Fellowship — Mondays, 7 p.m.  
Noonday-Wednesday, 12 p.m.  
TNT (Thursday Night Together)-7 p.m.

**GENUINE TOYOTA PARTS**



**10% OFF  
ALL GENUINE  
TOYOTA OIL FILTERS**

With This Coupon  
OFFER GOOD THRU AUGUST

**WE'VE GOT MORE FOR YOU! TOYOTA PARTS AND SERVICE**

**JERRY LEWIS TOYOTA**  
1950 N.W. Broad 890-1500

**TOYOTA QUALITY SERVICE**



**Minor Tune-Up  
\$39<sup>95</sup>**


• Install new spark plugs and if necessary new points and condenser  
• Check timing and ignition system  
• Adjust carburetor/electronic fuel injection to idle specifications where applicable  
• 6 cylinders slightly higher. Does not include 60,000 mile platinum spark plugs

With This Coupon  
OFFER GOOD THRU AUGUST

**SERVICE DEPT. HOURS  
Mon.-Fri. 7:30-5:30**

The MTSU Films Committee Presents

**BEST PICTURE**



**WINNER  
4 ACADEMY AWARDS**

BEST DIRECTOR Oliver Stone  
BEST FILM EDITING Clive Sussman  
BEST SOUND Susan Koss, John Cox, Wookin, Charles, Bud, Gerald, Richard Rogers

**PLATOON**  
The first casualty of war is innocence.

**Wednesday-Thursday  
September 9 and 10  
3:30 PM (1.00), 6:00 PM (1.50)  
and 8:30 PM (2.00)  
plus SPECIAL LATE SHOW  
Wednesday, Sept 9, 10:30 PM  
(2.00)**



*Maybe it's your calculator.*

We know that a cheap calculator can cost you blood, sweat and time.

Investing in a Hewlett-Packard calculator, on the other hand, can save you time and again.

HP calculators not only have better functions. They function better. Without sticking keys and bad connections.

Through October 31, you can get the cream of the calculators at a non-fat price.

We're cutting \$10 off the HP-12C. That buys you more built-in functions than any one else's financial calculator.

And we're giving away a free Advantage Module, a \$49 value, with every HP-41 Advanced Scientific calculator you buy. This 12K-byte plug-in, menu-driven ROM was designed specially for students.

So drop by your campus bookstore and compare HP calculators with the rest. By midterm, you'll see what a deal this is.

**FREE \$49 HP-41 ADVANTAGE MODULE**  
with purchase of HP-41. Purchase must be made between August 15, 1987, and October 31, 1987. See your local HP dealer for details and official redemption form. Rebate or free Module will be sent in 6-8 weeks.

**OR \$10 OFF AN HP-12C**



**HEWLETT  
PACKARD**

## The Lord's Supper.

United Methodists are concerned about hunger. The spiritual, physical and emotional hungers so many people experience. And what's more, we're doing something about it.

Through a spirit of sharing and caring we reach out to feed and clothe the poor, comfort the hurting, bring hope to the disheartened and joy to the lonely. It's our way of celebrating the true meaning of the Lord's Supper—sharing with one another what we have received from God.

It's a spirit that's catching. Join us and catch the spirit, too.

**Communion**  
**Wednesday - 7:00 P.M.**  
**The Wesley Foundation**

# EDITORIAL

## Water emergency affects everyone

Do not use unnecessary water. It is as simple as that.

Yesterday, Murfreesboro Mayor Joe Jackson declared a water emergency and called on citizens to quit washing their cars, watering their lawns and filling their swimming pools. Though only warnings will be given to violators at first, action will be taken if necessary.

Tennessee is in the midst of one of the worse draughts in its history, and Murfreesboro is no exception. If we take steps to conserve water now, a real crisis may be avoided. Mayor Jackson's announcement is a good first step, but we must follow through.

No rain is predicted for Murfreesboro for the next few days. This makes conserving water critical. If we do not

start taking the necessary precautions today, we may not have drinking water tomorrow.

While you might not enjoy driving a dirty car for the next few days, it is a minor inconvenience compared to the problems a major water shortage might cause. Industry and sanitation could be severely affected. Cooking, cleaning and bathing might all be restricted if we do not work to conserve the water we have and hope for the rain that hasn't come yet.

If you doubt the seriousness of the situation, a simple trip to Walter Hill Dam should convince you. The sight and smell of dead fish in stagnant water is all the more alarming when you realize that this is the place where Murfreesboro's water comes from.



Wayne Cartwright

The Walter Hill Dam, source of Murfreesboro's water supply, shows the result of Tennessee's record-breaking drought. A water emergency is in effect for the city until conditions improve.

## First ballgame crucial

Saturday night's season opener between Tennessee State University and Middle Tennessee State University is being considered the "showcase" game of the season around the Ohio Valley Conference.

Last year's confrontation drew nearly 30,000 spectators and this year's game promises to be just as prosperous as last years.

The natural rivalry that lies between the two schools is one of the biggest reasons for the large turnout.

There are pluses and minuses that surround this game.

In this, the second consecutive renewal of the heated rivalry between MTSU and TSU both stand to benefit greatly.

Both universities will gain exceptional coverage from the media. The fact that MTSU and TSU are so closely located will gain the attention of media from around the Middle Tennessee area.

That is good for everyone involved because the conference will be recognized and both schools will get good coverage from the start.

With the rivalry being as big as it is the teams are almost guaranteed a huge turnout. Since the conference receives none of the revenues, the schools will also benefit

### Tony Stinnett Sports CoEditor



greatly. Last year's contest earned both schools approximately \$35,000.

Since neither school's stadium can hold the amount of people this game will draw, Vanderbilt has been generous enough to lend its facilities.

Playing in a division I-A, upgraded stadium also enhances the quality of the game. Fans can experience I-AA football with the air of major college football.

Even though TSU isn't eligible to compete for the conference championship until next season, the game could still have a bearing on postseason playoff positions. Once again the rivalry offers reason to be very intensified.

The fact that two quality teams playing one another to open the season is also very intriguing. A coach usually likes to open with a weaker team to get the easy win and work out any first game kinks and nervousness.

TSU has a great winning tradition and MTSU has had one of the strongest programs in the nation over the last five seasons.

There are also a few negative points that stick out about this game.

First, it is an extremely big game to be playing so early in the season. There is the chance of key personnel, as was the case last year, being injured.

Both presidents and athletic directors, however, have indicated their desire to keep it how it is as long as the administration is satisfied and the conference cooperates.

Also, each team may channel all their energy into this one game and as a result make it difficult to get motivated for other games that follow.

After this season TSU will become eligible for the conference championship and since this is such a big rivalry it could be damaging for the losing team.

Not only would the victors have the bragging rights, they would also have an early conference lead over the other teams.

Overall, however, this is a great way to kick-off the college football season and as far as the players and spectators are concerned this is the way it should be.

## Reading can be for fun

### Dr. Glenn Himebaugh Mass Communications



Many of us are too busy "living the good life" to take time to read something just for pleasure, and that's a shame.

You've heard the typical excuses — probably used some of them yourself at one time or another. There's always another soap to watch on the tube...another concert to spend big bucks on...another "issue" to get steamed over...another this...another that.

But if you're not among the legions devoted to the "good life," you can still find some easy excuses to avoid reading for pleasure. Academically, there's always another term paper to write, and it seems professor I. M. Unreasonable always assigns at least six books and orders them memorized. My, we do exaggerate at times, don't we?

And isn't everyone working 40 hours a week while taking 18 hours of classes?

Any, or all, of the above may be true in your case, but even if it is, you can still find time for a bit of relaxation. The busiest people are the ones who can always find time for one more activity if they're interested enough.

That's the key: You have to

WANT to read for pleasure. You don't need to read a lot, but choose a topic that interests you and then visit the library or the newsstand. You will be amazed at how many books, specialized magazines and newspapers there are out there. There really IS something for everyone.

In my own case, it was a mail offer to subscribe to *The Christian Science Monitor* that re-introduced me to the joys of pleasure reading. *The Monitor*, they say, is among the world's best written and least read papers. It covers the globe and features incisive explanations of the issues and problems facing mankind in every conceivable corner of the world, in addition to offering an appealing menu of features and some of the finest photo essays to be found in print.

Later, a new publication called *The Walking Magazine* showed up in my mailbox after my wife had filled out a form at the Channel 5 Health Fair at Murphy Center. Having moved within walking dis-

tance of campus and taken up the activity in a pretty serious way, I was fascinated to find a monthly magazine devoted to the topic. More than that, I was rewarded richly as I discovered the magazine to contain high quality writing and striking graphic design. I devour every word in each issue now.

Books too are available for the borrowing—not books that you have to read but books you WANT to read. In my case, I have this dream about going to Australia. Maybe I will do it someday, but in the meantime two books within the past few months have filled the void — *The Fatal Shore*, which is a thorough history of the country, and *The Australians*, a contemporary overview.

Don't misunderstand. I'm not suggesting you read what I do. Instead, I am urging you to chuck the old excuses not to read and to do yourself a favor. Read something just because you want to do it. Do it once, and I'll bet you'll do it again...and again...and again.

## ASB for everyone

### Holly Lentz ASB President



What is the ASB? The Associated Student Body is the united voice of the students in campus affairs. The ASB is structured much like our own United States Government, with a house, a senate, a president, two speakers, student courts and many other students, all of whom express the opinion of the student body.

The ASB's responsibilities include appointments of students to university committees, student activities during the homecoming celebration, the annual charity Chili Cook-Off and appointment of an executive cabinet and student judiciary positions.

Your ASB started off the year in high spirits with a record turnout of 86 people in attendance at the ASB Retreat. According to Harold Smith, Director of Student Programming, "this Retreat is the second largest ever." The largest was under Bill Boner's administration.

Student leaders from many organizations met to discuss the drafting of a Constitution for the President's Club. Workshops were held for the student courts, the ASB Cabinet and student members of

university committees. Various administrators spoke concerning their role in the student's life and the retreat wound up with an open forum with students and administration.

The first cabinet meeting of the year was earlier this week. Chief of Staff, Jo Willey led the meeting and went over progress reports from each cabinet position.

Some upcoming ASB events include:

\*Joint session with the Senate and House of Representatives on September 9, 1987, at 5 p.m. in room 322 of the Keathly University Center.

\*There are still a few committee and court positions available. Get involved! Applications are in ASB office, Room 304 of the Keathly University Center.

\*Senate elections will be held on October 1 for five (5) Freshman Senators, one (1) Sophomore Senator, one (1) Senior Senator. Qualifying petitions will be available on September 11 in the ASB office.

## LETTERS TO THE EDITOR

### Teacher expresses thanks

Dear Editor,

We would like to take this opportunity to express our love and appreciation to the administration, faculty, staff and students for your prayers, gifts, visits and concern during the recent loss of our home, cars and possessions to fire. We are most grateful.

Please continue to remember us in your prayers during our rebuilding process.

Sincerely,

Sandra Walkup  
Facilities Coordinator

### More vocabulary words

Dear Editor,

ATT: "Hoss" Cartwright  
Regarding your "vocabulary list," - I find it very amusing. Since you didn't mention what other words are in your vocabulary, I assume that your list is the extent of your functional vocabulary.

(ahem)Public Relations - A major you might claim until you think of a real one.

Ed Kimbrell - A cool and wacky kind of guy until you take his tests.

Okay, Hoss. Does this mean that Dr. K's tests are tough and

thorough? Does this mean that if, like I did, one receives an A, that one may acquire some valuable theory? Could it really be true that 60 percent on average fail? Yes. Say, Mr. Cartwright, as a PR major, Dr. Kimbrell's test is the very first test you take. It's a tough class, a REAL class. Get a clue!

Do some research! Read a dictionary! Better yet - take a PR class or quit talking like a freshman!

Holly Swan  
Box 3908  
Allyson Sharp  
Box 8318  
Angie Rogers  
Box 8316

### Letters Policy

Letters to the editor are encouraged and are considered on the basis of timeliness, interest and space.

All letters must include the author's name, MTSU box number and telephone number. Telephone numbers will not be printed and are for verification purposes only. When warranted, requests to withhold names will be honored.

We reserve the right to edit all letters for spelling, grammar and length.

Address all letters and inquiries to *Sidelines*, Box 42, Room 310 James Union Building. A letters box is also located in the Keathly University Center Grill.

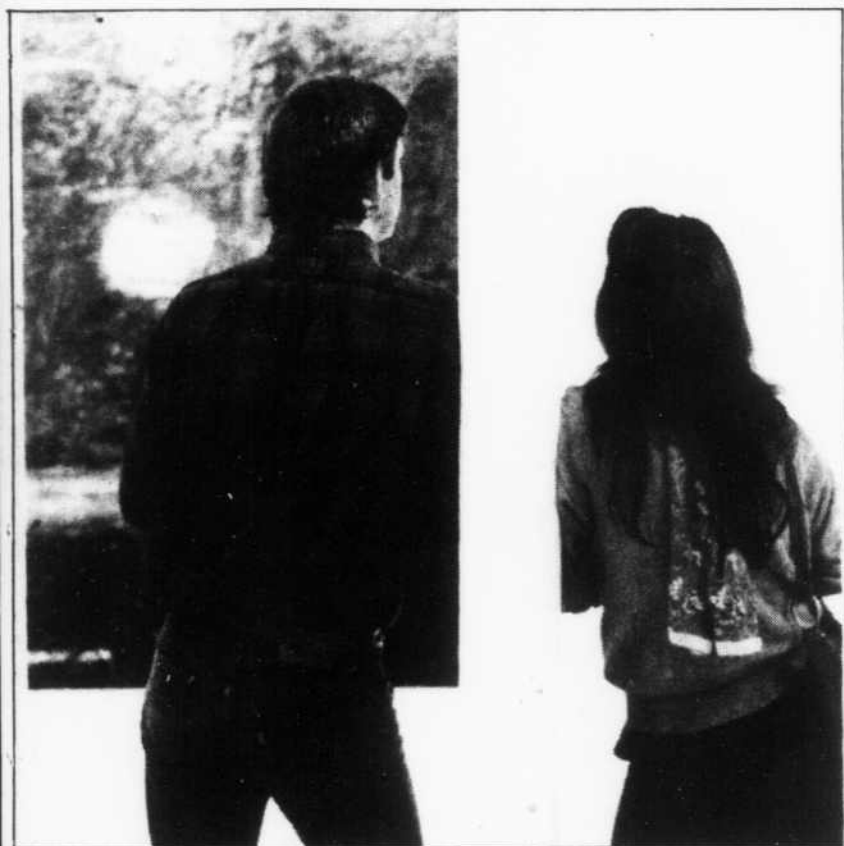
## SIDELINES

Crystal Nelms ..... Editor  
Jerry Osborne ..... News Editor  
Chris Bell ..... Editorial Editor  
Chuck Morris ..... Sports Co-Editor  
Tony Stinnett ..... Sports Co-Editor  
Jonathan Pinkerton ..... Entertainment Editor  
Wayne Cartwright ..... Photography Editor  
Dana Pogue ..... Copy Editor  
Jamie Brooks ..... Copy Editor  
Evelyn Dougherty ..... Advertising Manager  
Jackie Solomon ... Student Publications Coordinator

*Sidelines*, Middle Tennessee State University's student newspaper, is published every Tuesday and Friday. Editorials and columns reflect the opinions of their authors and do not necessarily represent the views of the management of this paper.

# ENTERTAINMENT WEEKEND

## 'Black Paintings' enlighten first exhibit



Lee Gayle Martin/Special

Two visitors to the Art Barn discuss "The Black Paintings" on opening night of the current exhibit by art instructor David LeDoux.

By JONATHAN PINKERTON  
Entertainment Editor

If the title of the current exhibit being presented at Middle Tennessee State University's Art Barn Gallery — "The Dark Paintings" — doesn't arouse at least a small

amount of curiosity, the dedication by the artist, David LeDoux, should.

The dedication reads: "With all due and proper homage to the other, The Dark Twin, Alfonso de la Rivera." If you know LeDoux,

you know there is no twin.

"The show and the dedication is a deliberate attempt to create a mystification that doesn't immediately open itself. It is not meant to confuse but to create a certain kind of experience," said LeDoux.

While dealing with what seems to be a very serious idea, LeDoux uses a bit of "whimsy that adds to the experience." His humor takes form in the use of "another self."

The "Dark Twin" in the dedication is, according to LeDoux, "Like an actor playing two roles."

His idea is a great success. Before I went to the opening Monday night, I had the preconceived notion of very dark uninterpretable pieces. What I saw when I arrived was a group of paintings that did indeed share the color black. More than that, they were each individual pieces that easily stood alone and opened themselves to my interpretation.

"I don't think of these as a series," LeDoux stressed. "While my others [a group of somewhat brighter paintings referred to as "The Foxhollow Paintings"] seemed to be an obvious progression like a piece of music, with each piece being the next note, these are more random pieces that share some elements with one another."

One main element other than the obvious color is texture. With the use of black, the notion is that these paintings would be flat. Upon viewing these works, I found myself getting lost in the textures and surfaces of the paintings.

LeDoux attributes his fascination with surfaces to his first visit to Europe.

"When I went the first time, I was consumed with the surfaces of these 2000 year old walls. Part of that was because of their surfaces, part was because of what all had been on and around these walls throughout the years," LeDoux admitted.

These feelings are easily seen in his present show, but he has his reservations about revealing his own thoughts about his works. He does admit that he has "an agenda about them." He feels, however, that if he lists his own ideas about his paintings, he would limit his audience's vision.

"The Black Paintings" are on exhibit in the Art Barn Gallery throughout Sept. 24. The gallery's

After teaching painting and other art related courses at MTSU for the past thirty-two years, LeDoux will be taking off next semester to explore what he has been doing with his paintings.

"I will be taking the time to explore my paintings during the next semester. I will be doing this through a kind of sabbatical which is referred to as "a non-instructional assignment." LeDoux explained.

One aspect of his exploration will center around his current vein of paintings — "The Black Paintings."

"I thought when I started, "The Black Paintings" I would become preoccupied with them, and for a time, I

was," said LeDoux.

"Now the two line (both of his "series" of paintings) are running concurrently," LeDoux continued.

This "time off" will give LeDoux the chance to see if he can become "saturated with his paintings."

"I feel that after teaching almost non-stop since 1956, I am ready to dive into this work and discover if I can do this rather than just teach it," LeDoux said.

This reporter's only hope is that after his "sabbatical," LeDoux will realize what a valuable asset he is to this university's art department and that he return to his regular teaching position next fall.

hours are: Monday-Friday 8:00 a.m.-12:30 p.m. and Sunday 1:30 a.m.-4:30 p.m., Saturday 10:30 p.m. - 4:30 p.m.

### ANNOUNCING MTSU FOUNDERS' DAY PROGRAMME A SENSATIONAL BIRTHDAY CELEBRATION!

Thursday, September 10, 1987

- 1:30 p.m.** **Carnival games** and challenges for everyone on the lawn between Peck Hall and Cope Administration Building. Continuous 50's and 60's music will provide the background for the events.
- 2:45 p.m.** **Here come the clowns!!**
- 3:00 p.m.** **Musical entertainment** by Dixieland, Bluegrass, and German Polka bands will continue into the picnic supper.
- 4:30 p.m.** **Picnic supper** on the lawn with roving musicians and clowns. Tickets, only \$2.00!, are available in advance at Student Programming, KUC 308, and at Athletic Ticket Office, MC. Tickets will also be available at the picnic area.
- 5:00 p.m.** **Vaudeville** will return to MTSU on stage at Cope Administration. Jugglers, magicians, a minstrel show, and a barber shop quartet will be featured.
- 7:00 p.m.** **Ceremony** on the Cope stage will include "Reflections of the Past and Promises for the Future" by alumni from the 40's through the 80's. Dr. Bob Womack ('41) will serve as master of ceremonies.
- 8:00 p.m.** **Concert** by jazz legend Maynard Ferguson in the Boutwell Dramatic Arts Tucker Theatre will be free and open to all.
- 10:00 p.m.** **Street dance** under the stars in front of Kirksey Old Main with music by Cruise Control.

1911-1987

**Friday and Saturday**  
**MR.**  
**POTATO HEAD**  
*and special guest*  
**TABLOID PRESS**

Ladies Admitted Free  
10 p.m.-2 a.m.

**EJ's**

2115 E. Main Street

The MTSU Special Events Committee  
presents

## EDDIE MURPHY in Concert "The Raw Tour"

**Saturday, October 3, 8:30 p.m.**  
**Murphy Center**  
**All tickets reserved at \$16.50.**

Tickets go on sale 10 a.m. Tuesday, September 8, at all Ticket Master outlets and at the MTSU Concert Ticket Office at Murphy Center! Students will receive a \$1.00 discount on each of first two tickets they purchase with a valid MTSU ID. Call 898-2551 for additional information.

## SPORTS

## Blue Raiders prepared for showdown with TSU

By TONY STINNETT  
Sports Co-Editor

Chapter one has been completed and put into the history books.

It is now time to begin a second chapter in the ever-growing rivalry between Middle Tennessee State University and Tennessee State University.

Regardless of the outcome, fans will be able to experience one of the most exciting ball games that will be played this season.

Last year the battle was by TSU 7-6. It was a game that was a defensive battle from start to finish.

Despite the low score, the game was filled with excellent defensive plays until MTSU made a last second drive that ended just short of a possible field goal attempt.

"We should have won the game last year," Head Football Coach Boots Donnelly stated. "We were not able too, it had nothing to do with Tennessee State, it had something to do with our attitude and how we approached the game."

If we get beat this year, I think we will get beat by a better football

team, not because of our attitude."

This year the game has all the markings of an offensive battle, as both teams lost key members of their defenses.

In an offensive match up, the key for MTSU will be the performance of quarterback Marvin Collier. Collier was kept in check last year by TSU and was injured later in the season, missing three games with a separated shoulder. The big and quick TSU defense will again keep pressure on Collier.

Another MTSU key will be how well tailback Gerald Anderson rebounds from a shoulder injury suffered earlier in last year's TSU game.

"Both Gerald and Marvin had an excellent fall," Donnelly said. "Attitude wise, they're super and physically, they're very well. It's just a matter of seeing what they can do."

TSU quarterback Stacy Gear, who threw for 1,925 yards and 16 scores last year is the key to the TSU offense.

However, his task is made tougher by the fact that two of his

top wide-receivers, Frank Pillow and Chris Hayes, are out with shoulder injuries.

"We will have to control Gear and their receivers," Donnelly said. "But Gear can't throw and they can't catch unless the people up front block, so they are as big of a concern as anyone."

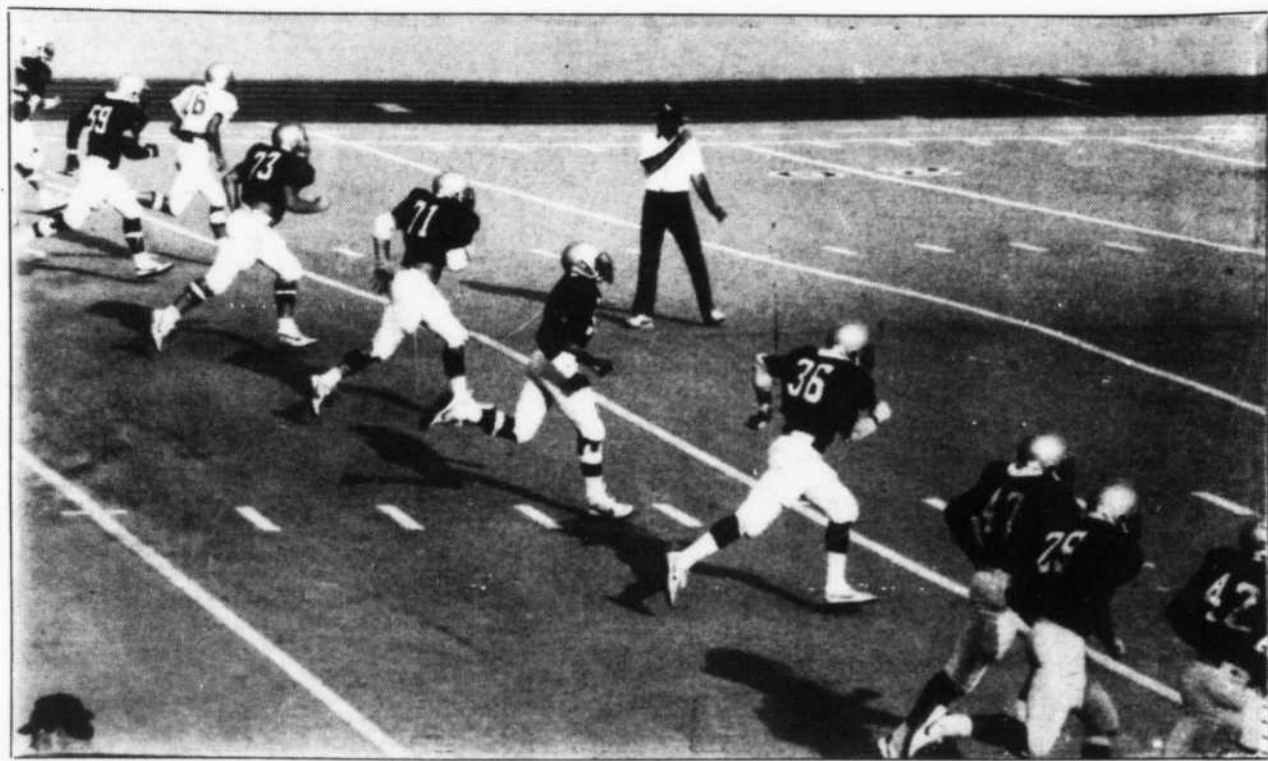
According to Donnelly there are two keys to the game. First, keeping mistakes down to a minimum and secondly, controlling TSU's offensive and defensive lines.

"Last year they completely owned our offensive line," Donnelly said. "We couldn't do anything in the tackle boxes."

At this point all of the positions have been filled, yet Donnelly is still not satisfied with the kicking game, in that it still lacks consistency.

TSU leads the series 6-1 after last year's encounter, but TSU later forfeited the game after it was learned that they used an ineligible player.

Game time is 7:30 p.m. at Vanderbilt Stadium.



Head Football Coach Boots Donnelly is making sure his team is conditioned and ready to go for Saturday night's season opening clash with Tennessee State. Game time is 7:30.

## Lady Raiders spike Tennessee State in conference opener for both teams

By M. A. BROWN  
Sports Writer

The Middle Tennessee Blue Raiders Volleyball squad got their 1987 season underway Thursday night with a convincing 3-0 victory over Ohio Valley Conference foe Tennessee State University.

After TSU forfeited the initial game of the match due to a late arrival, the Blue Raiders blasted their visitors from Nashville 15-0 in the second game to take a commanding two game lead.

MTSU's Vickie Clark opened the game by serving the Blue Raiders

to an 8-0 lead before TSU was forced to call a time-out.

TSU could never get into the game, however, as Vickie Bell and Wanda Johnson's pinpoint serving kept the Tiger Belles offbalance.

In the final game of the night, TSU jumped out to an early 3-0 lead before MTSU mounted a comeback to tie the game at three.

TSU surged out to a 7-3 lead before the Blue Raiders came from behind again to knot the score at eight.

From there, MTSU took control of the game and cruised to an easy

15-8 victory and clinched the match.

The Blue Raiders will play again on Tuesday, Sept. 8 against the Louisville Cardinals in Louisville, Ky. at 7 p.m.

## WORK FOR YOURSELF

As a campus representative you'll be responsible for placing advertising materials on bulletin boards and working on marketing programs for clients such as American Express, Boston University, Euroll, and various movie companies, among others. Part-time work, choose your own hours. No sales. Many of our reps stay with us after graduation. If you are self-motivated, hard-working, and a bit of an entrepreneur, call or write for more information to:

AMERICAN PASSAGE NETWORK  
6211 W. HOWARD STREET  
CHICAGO, IL 60648  
1 (800) 221-5942 or  
(312) 647-6860  
CHICAGO DALLAS LOS ANGELES  
NEW YORK SEATTLE

Do you have a few extra hours a week you would like to turn into \$\$\$?

Are you a dedicated, responsible person? If so, we need you!! Sidelines is currently hiring persons to supplement our ad dept. Drop by Room 306 in the JUB for an application/interview.

KROGER  
Now Hiring  
Nutrition and  
Deli Clerks

Need people to work part-time 20-25 hours per week. Experience helpful but not necessary. Flexible hours. Apply in person at the 831 S. Tenn. Blvd. Kroger store.

WEEKEND POSITIONS  
AVAILABLE!

Park Personnel  
2802 Opryland Drive  
Nashville, Tennessee  
37214  
EOE

## CLASSIFIED

## FOR SALE

Commodore 64  
Nap Green Monitor  
1541 Disk Drive  
80 Column Converter  
Master Modem  
\$300.00  
895-8424

Used 5 drawer chest of drawers, good condition. Reasonable. Two new Homecrest patio chairs. Call 893-4157. Close to university.

ART/DESIGN STUDENTS  
Drafting table 36 by 60, par allel bar, drawer. \$90.00 Call 895-2988. After 5 p.m.

## SERVICES

ADVANCED WORD  
PROCESSING

Theses, Term Papers. Original Letters in Volume. Reports, Manuscripts. Professional Quality — Reasonable Rates. 895-2326.

## EXPERIENCED TYPIST

Resumes, term papers, theses, dissertations. Reasonable rates. Call 898-2815.

SCHOLARSHIPS, GRANTS, financial aid available for college and graduate school. Our computerized service matches college freshmen, sophomores, potential and current graduate students with aid sources. Many awards not based on need. \$4 billion in aid available. For free information with no obligation, call today! Scholarship Matching Center, 1-800-USA-1221, ext. 6132.

HUNTERS COURT STABLE offers year 'round riding lessons for beginners through advanced. Now — buy 1 lesson, get 1 free with our introductory special! INDOOR & OUTDOOR riding. We also offer boarding, training, showing and sales of quality Hunters and Jumpers. COMPLETE ENGLISH SADDLERY SHOP ON PREMISES. David Wright and Marv DeLima, 896-4189.

## SUBLEASE

Looking for someone to sublease an apt. in the Hickory Hollow area. Share w/ one other male. Extra nice. Extra cheap. Call Danny 320-7525 after 3.

ALLIED WELDING  
SERVICES

Fully equipped shop, portable service available. 25 years experience repairing and welding all types of metal. Motorcycle repair; aluminum; trailer hitches and supplies; fabrication; lift gates and installation; special applications. Fair rates — call us for an estimate — 896-1805. 527 West College. Open Mon.-Fri. 7 a.m.-5 p.m. and Sat. 7 a.m.-noon.

## HELP WANTED

COLLEGE REP WANTED to distribute "Student Rate" subscription cards at this campus. Good income. For information and application write to: COLLEGIATE MARKETING SERVICES, 251 Glenwood Dr. Mooresville, NC 28115. (704) 664-4063.

Excellent income for part time home assembly work. For info call 312-741-8400.

Earn up to \$15,000 next school year managing on-campus marketing programs for top national companies. Flexible part-time hours. Must be Jr., Sr., or Grad. student. Call Dee at (800) 592-2121.

## PERSONAL

WILLIAM and PETTI Congratulate on old love rekindled at the ASB retreat. May your flame never burn out. From your ASB friends.

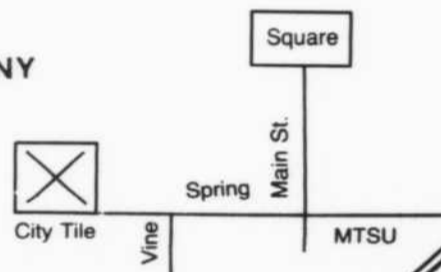
BRIAN and TANONI Congratulate on your first wonderful weekend together at the ASB retreat. May you have many more. From your ASB friends.

Make Your Dorm Room  
Feel Like Home

Dorm Size Carpet For Sale  
Starting at \$20.00

City  
Tile  
COMPANY

TERRI H. PHILLIPS  
223 S. Spring Street  
Murfreesboro  
893-7721



## Sophomores

## Juniors, Seniors &amp; Grads...

**GIVE YOURSELF  
SOME CREDIT!**

**APPLY NOW FOR YOUR VERY OWN...**



• Bring a photocopy of your School I.D.

• No cosigner required

**APPLY NOW ON CAMPUS!**

Date: September 8,9,10

Time: 10 a.m.-1 p.m.

Place: K.U.C. outside bookstore

**CITIBANK**  
Citibank (South Dakota), N.A. Member FDIC