

**Opinion**

Lose attendance policy - p.4

**Features**

Homecoming Queen Relaxes - p.6

**Sports**

Editor picks winners- p.9

# SIDELINES

November 1, 1990

Middle Tennessee State University

Volume 65, Number 26

## Prez named in two weeks

*Chancellor will call special campus board meeting***SHANTELL KIRKENDOLL**  
News Editor

Tennessee Board of Regents Chancellor Otis Floyd speculates that the new university president will be announced in the next two weeks.

"I'm looking at within a week to a week and a half to call a meeting of the Board," Floyd said.

The next meeting of the board is scheduled for Dec. 7, but Floyd will call a special on-campus meeting of board members to make his recommendation for president.

"I don't think the chancellor has any candidate in mind...he's listening to all of us - the community and the committee."

**James Neal,**  
Advisory  
Committee  
Member

The advisory committee which makes recommendations to Floyd, held its last meeting here on Monday to review the final

candidates. About 30 people showed up at this meeting to make recommendations to the committee, according to committee member James Neal.

"Deans, faculty and students came to the meeting and expressed their ideas about the strengths and weaknesses of the candidates," Neal said.

About 150 people attended each of the first two open meeting days with the candidates, according to Neal. He considered this a good turnout since many students

Please see **PREZ**, page 3

## Transfer, freshmen students need measles shots before registration

*Returning students not enrolled during spring 1990 included***Staff Reports**

All freshmen, transfer students, and graduate students, if not born before 1957, must show proof of adequate measles immunization before they may preregister next week.

Immunization is required for all new or returning students who are taking nine hours or more and were not registered in the spring of 1990.

All students who fit the category and have not given proof of immunization will have a hold flag on their academic record to prevent preregistration.

According to Barbara Martin, R.N., director of MTSU Health Services, this is a requirement of all new students attending universities in the Tennessee Board of Regents system.

Though the state only requires a measles vaccination, the Center for Disease Control and the

Tennessee Department of Public Health recommends that college age students receive the MMR combined vaccination. This vaccination includes immunization against measles, mumps and rubella.

"We are trying to prevent an epidemic of any of these diseases since so many colleges and universities have had outbreaks," Martin said.

Besides being born before 1957, exceptions to the required vaccination are allergies to the components of the vaccine and pregnancy.

"At the time they (students) come for injections they are given an information sheet with information about each vaccination and any side effects," Martin said.

Students may obtain a measles vaccination from their private physician or may receive the vaccination.

Please see **MEASLES**, page 3

**HISTORY AND POLITICS**

Carl Lambert/Staff

**WINDHAM LECTURE SERIES:** Dr. Dewey Grantham was a featured speaker Tuesday during the Windham Lecture Series on The South and the Second Reconstruction. Grantham's lecture given at Wright Music Hall, centered on the Americanization of Southern Politics. He is the Holland N. Mc Tyeire Professor of History at Vanderbilt University. The series was established by William and Westy Windham through the MTSU Foundation.

Top Ten Organizations Receiving Money from the Student Activity Fund	
ASB	\$7,550.72
Soc. of Broadcasting	\$3,330
Rugby Club	\$1,915
MTSU Karate Club	\$1,200
Pi Sigma Epsilon	\$1,050
Pre Law	\$1,050
Alpha Eta Rho	\$1,000
PRSSA	\$870
Sigma Gamma Rho	\$750
Bowling Club	\$700

## MTSU's \$3 student activity fee still low after approved increase

**SHANTELL KIRKENDOLL**  
News Editor

Even after the 50 percent increase in the activity fee, MTSU students still pay a lesser fee than many Tennessee college students.

The amount of requests from organizations is typically more than the activity fund. This past year the requests totaled \$64,244.78 while the activity fee only raised \$30,370.23.

The allocations committee was left with \$28,851.72 after \$1,518.51 was taken from the total collected.

"The 5 percent contingency is

held in reserve for emergencies organizations which may not be projected by at the beginning of the school year," said Paul Cantrell, dean of students and chairman of the allocations committee.

The fee mainly benefits student organizations — the ASB receiving the largest allocations because their activities benefit the campus at large. Until recently the activity fund paid the salary of the ASB secretary but now that salary is paid by the university.

The MTSU pays for many events that other Tennessee college students pay for through the student activity fee. For instance,

lecturers sponsored through the Ideas and Issues Committee are paid for through university budgets, not revenue from students.

"When comparing university activity fees, sometimes it's like comparing apples and oranges," said Dean Davis of Vanderbilt University's student affairs.

The activity fee charged of Vanderbilt undergraduates during the fall semester is \$135.50. The activity fee charged in the spring is \$117.40.

The activity fee charged at VU supports the operation of the Sar-

Please see **FEE**, page 3



# Campus Capsule

**Campus Capsule** is a service provided by **Sidelines** for non-profit campus groups. If you have a notice that you would like to run in **Campus Capsule**, please submit typewritten or printed information to our office in the James Union Building, Room 310. Items must be received by Tuesday at noon for Wednesday's paper and Friday at 4 p.m. for Monday's. Inclusion is not guaranteed and is based on available space.

**Co-Op jobs** starting Spring, Summer, Fall, 1991. Opportunities include biology, physics, chemistry, geoscience, mathematics, computer and environmental science, and other related disciplines. U.S. Department of Energy has the following deadlines Spring '91 - Oct. 20, 1990; Fall '91 - March 15, 1991. Support includes academic credit, \$200/week, housing, and travel reimbursement.

**Join the Intersarsity Christian Fellowship** on Tuesday from 7-8 p.m. in the

The **Lambda Association of MTSU** is a support organization for gay and lesbian students, faculty, staff, and their supporters. For more information write to: MTSU, Box 624.

**Sidelines** is looking for staff writers. If you are interested and have a good grasp of the English language, please apply. There are no prerequisites for these positions. For an application, come by James Union Building, Room 310, or call 898-2337.

The **Murfreesboro Young People's Group of Alcoholics Anonymous** has meetings every Wednesday at 8 p.m. at 601 Bell St. It is an open meeting and all interested in finding about recovery from alcoholism are welcome. If you need additional information or a ride to the meeting, call Rick at 898-3190.

**Students for Environmental Action** meets every Tuesday at 6:30 p.m. in KUC, Room 305. New members welcome.

**Scattergories Tournament** sponsored by Gamma Beta Phi Honor Society tonight at 7:30 in the Tennessee Room of the James Union Building. The \$5 admission includes a dance, free food, prizes and tournament play. All proceeds go to the Mental Health Association of Tennessee.

There will be an **ASB meeting** today for students concerned with Mass Communication parking situation or any other campus concerns.

**Alpha Kappa Alpha Sorority, Inc.**, in cooperation with the **American Red Cross** will sponsor a blood drive Nov. 7-8. The blood drive will be in KUC 322 between 11 a.m. and 5 p.m. Please participate, all blood types are needed. For more information, contact Rochelle Murphy at 898-4228 or Nick Alfred at 895-1936.

An organizational meeting will be today at 3:15 p.m. in KUC 311 for women survivors of rape and childhood sexual abuse interested in forming a support group. For more information, contact Jo Ann at 355-1077 or box 1683 or Dr. Jeanette Heritage at 898-2565 or box 499.

A weekend retreat is being sponsored by the **MTSU Catholic Center** tomorrow thru Sunday. This event is an opportunity to take a break, meet new people, find yourself and God. For more information, contact the MTSU Catholic Center, 1023 N. Tenn. Blvd. Phone 896-6074.

A "Salute to the Troops" will be at **Outlets Ltd. Mall** Nov. 10, from 10 a.m. to 9 p.m. Donations of care items will be accepted. Cards and scrolls will be available for personal messages and words of encouragement to the troops. Contact Carole Reynolds at 895-4966.

**Pi Sigma Epsilon** will sponsor the **Holly Berry Christmas Bazaar** Saturday from 9 a.m. to 6 p.m. and Sunday Nov. 4, from 12 p.m. to 6 p.m. The Bazaar will be in Murphy Center.

**MTSU Student Ambassador** applications are now available and can be picked up in the public relations office, Room 205 of the administration building. Students must have been on campus for at least one semester and have a GPA of 2.5. Applications must be turned in by Nov. 19.

The **Sigma Club** will meet tonight at 7:30 in KUC 312. The smoker and initiation are topics on the agenda.

The **Mathematics Organization** will have a meeting Nov. 7, at 5 p.m. in KOM, Room 307. Ms. Lora Brewer of the MTSU department of mathematics and statistics will be the speaker. The subject will be "What can you do with a Mathematics Degree?" It is not too late to join. Dues are \$3.

The **MTSU Hypers Club** is sponsoring a class in **positive self-defense**. Dale Kirby, who has several black belts in various forms of the martial arts and author of four books on martial arts, will be the instructor. The class will meet Oct. 29, Nov. 5, and Nov. 12, from 4:45 p.m. to 5:30 p.m. in dance Studio B in Murphy Center. There is a \$20 fee to attend.

**MTSU Campus Unity Group AA** meets today at 3:30 p.m. until 4:40 p.m. in KUC 312 and tomorrow at 7 p.m. until 8 p.m. KUC 311.

Anyone interested in hosting a foreign student this summer should come to the third floor of the BDA Nov. 12. Rita Maisonneuve will be speaking about the NACEL student exchange program from 11:30 a.m. until 12:30 p.m. Those wanting more information should contact Maisonneuve at 898-2284.

**SOUTHEASTERN FITNESS CENTER**

**2 FOR 1**  
Limited Time Offer

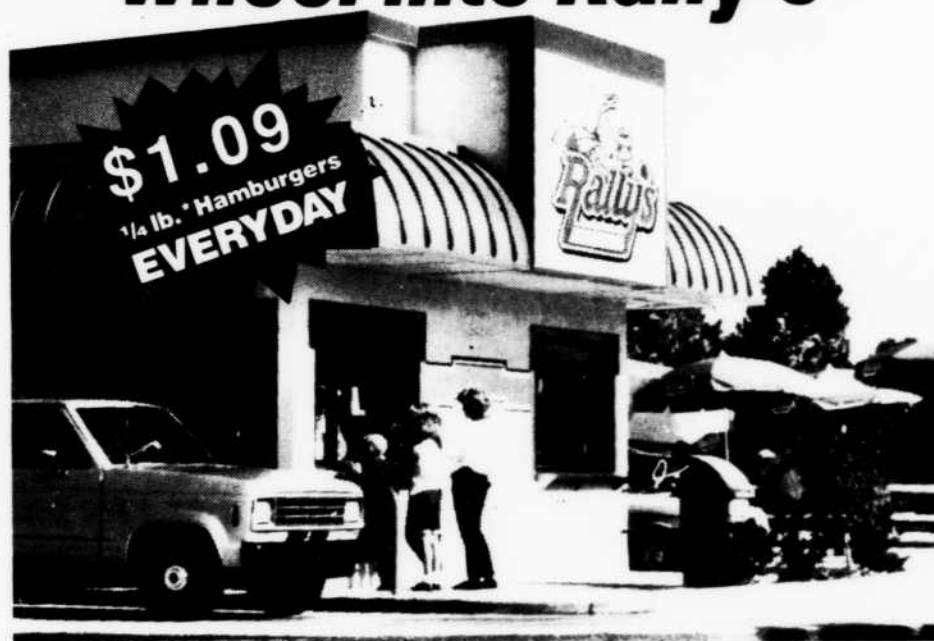
Bench Aerobics- Aerobics- Track  
Free Nursery and Much More

Jackson Heights Plaza - 895-0604

## THRONEBERRY PROPERTIES 7 LOCATIONS OPEN DAILY

OAK PARK 1211 Hazelwood 896-4470	Natural landscaping, large garden-style and townhouse apartments. Fireplace, W/D hook ups, appliances, water furnished. NO PETS.
BIRCHWOOD 1535 Lascassas 896-4470	Water, curtains, ceiling fan, outside storage and all appliances furnished. Small pets with deposit. 1 and 2 bedroom available.
WINDRUSH 1735 Lascassas 893-0052	Country setting. Low electric bills. Studio, 1-2-3- bedrooms. Small pets with deposit.
PINE PARK 1210 Hazelwood 896-4470	Convenient to MTSU. Dishwasher, stove, refrigerator, garbage disposal. Water furnished. Large kitchen. 1 and 2 bedrooms. NO PETS.
PARK IV 2225 E. Main 896-4470	Water furnished. 1 and 2 bedroom apartments. NO PETS.
HOLLY PARK 2426 E. Main 896-0667	Water furnished. 1 and 2 bedroom apartments, townhouses. NO PETS.
ROSEWOOD 1606 W. Tennessee 890-3700	5 floor plans, exercise room, pool and tennis court. Ceiling fans, W/D hookups, appliances and drapes furnished

## Wheel into Rally's



**... when you're on the go!**

You'll get great \$1.09 1/4 lb.\* hamburgers, one-of-a-kind fries, shakes and more. When you're on the go, **Rally's** gives you super quick service with two drive-thru lanes and a walk-up window.

\*Net weight before cooking.

### Meal Combo \$1.89

1/4 lb.\* hamburger, one-of-a-kind fries and 20 oz. softdrink.

Cheese, bacon and tax extra. Not good in combination with any other offer. Valid thru 11-4-90.

\*Net weight before cooking.



**You don't need a lot of dough!**

1605 Memorial Blvd.



## News Briefs

### University closes during Halloween

(CPS) — Halloween, something of an official national student holiday on many campuses, became an official student holiday at Southern Illinois University (SIU) in Carbondale this year.

In what is probably the nation's most extreme effort to halt student Halloween parties, SIU made all its students leave campus from Friday, Oct. 26 through Tuesday, Oct. 30.

SIU has held giant, unofficial Halloween parties attended by students and nonstudents from all over the Midwest since the mid-1970s.

Despite the formation of a Halloween Core Committee to coordinate increased police protection, street closings and bans on glass bottles, in 1988 the celebration spun completely out of control. More than 300 people were hospitalized with facial lacerations caused by broken bottles, one person was stabbed and a woman was raped, SIU officials reported.

### Mock Trial Competition

MTSU will host its inaugural mock trial competition on Nov. 3 in the KUC, Room 322, from 1 p.m. until 10 p.m. The top two teams from MTSU will compete in the regional mock trial tour-

nament on Nov. 16-17 at Bellarmine College, in Louisville, Ky.

Six teams will be competing for the top two spots, with six to eight students on each team. Each mock trial will consist of three lawyers and three witnesses, according to Tom VanDer-vort, professor of political science.

Last year MTSU had a team to compete in national competition at Drake University Law School and win an award as One of the Most Outstanding First Year Teams.

### Lecture on healing racism

Nathan Rutstein, noted author and lecturer, will lecture on "Healing Racism Through Education" today at 8 p.m. in the Davis Science Building, Room 100.

Rutstein is currently a professor of communication at Springfield Technical College. As a former reporter in Philadelphia, an NBC News Foreign Assignment Editor and ABC news producer, has interviewed Martin Luther King, Jr. four times and worked extensively on civil rights.

The author of *To Be One: A Battle Against Racism* has lectured on the problem of racism at Harvard, Princeton, University of Iowa and the University of Massachusetts.

### MEASLES, from page 1

tion from campus health services. The health department no longer gives free measles vaccinations. For student convenience, campus health services is offering the MMR vaccination for an "at cost" fee of \$25. Students must present proof of payment to the business office before they receive their vaccination.

Only the MMR vaccination is offered by health services. If students wish to be immunized only for measles they must seek other treatment. The CDC has found no known risk in being immunized against any or all of these diseases if someone is already immune to any of them.

### FEE, from page 1

ratt Student Center as well as student programming, student publications, homecoming activities and tickets to athletic events.

"The difference in the fall and spring rates is because students pay for different things in different semesters," Davis said.

MTSU's sister school, Tennessee State University, charges students an activity fee of \$6 in addition to a \$1 fee which directly benefits the Student Government Association (SGA).

The SGA fee pays for trips made by the association and social activities sponsored by SGA.

MTSU allocated \$2,550.72

from its student activity fund for ASB officers to attend the Tennessee Intercollegiate Legislature.

The \$6 student activity fee covers concerts, lectures and other campus events, but according to the SGA president, Steve Ship, the amount of money raised by the fee always exceeds requests.

The ASB senate at MTSU passed a resolution to increase its student activity fee by \$1 in compliance with the Senate Bill No. 1824. The bill passed in March of 1978 stipulates that "a referendum providing for an increase in that portion of the activity or

Health services is open Monday through Friday from 8 a.m. - 4 p.m. and any questions can be answered by calling health services at 898-2988.

"Because this is the first year for preregistration, it has magnified the problems we're experiencing in getting compliance," Martin said.

Due to the early registration process, students have had less time to comply with the new requirement.

Health services administered over 200 measles shots by noon on Wednesday. MTSU personnel are receiving assistance with the influx of students by Dot Norris, retired nursing supervisor at the Rutherford County Health Department. ■

maintenance fee received by the student government association may be held for student body approval or rejection. Such increase shall not exceed one dollar (\$1.00) for each student per activity or maintenance fee payment."

Austin Peay State University students pay an activity fee of \$37 per semester which pays for infirmary services, student programming and student publications.

The Memphis State University student activity fee is \$45 per semester and the university uses funds raised through this fee to offer students discounted tickets for Memphis theatre and ballet tickets. ■

### PREZ, from page 1

and faculty had classes to attend.

Each of the four candidates held open meetings in the KUC Theatre last week.

"I don't think the chancellor has any one of the candidates in mind for the position," said Neal.

"He's listening to all of us, the community and the committee, and is trying to get ideas from

everyone."

Chancellor Floyd conducted interviews with candidates James Walker, Verna Armstrong, Billy Franklin and E. Grady Bogue before their meetings on campus. ■

## 湖Hunan CHINESE RESTAURANT 南

OPEN 7 DAYS A WEEK

- FEATURING -

HUNAN - SZECHUAN - MANDARIN

CANTONESE CUISINE

DINE IN OR TAKE OUT

2112 S. Church St.  
Exit 81 B

893-7008



LEAVE THE  
PACK BEHIND



The Student Publications Committee  
is now accepting applications for

### Spring Sidelines Editor

Candidates must have a 2.5 GPA, must be a fulltime MTSU student this semester, and must plan to enroll for at least nine hours of coursework each semester they serve as editor.

Applications are available in Room 306 of the James Union Building. A transcript and three letters of recommendation are required. For more information please call Jenny Tenpenny Crouch, Student Publications Coordinator, at MTSU ext. 2338.

Deadline for applications is Nov. 12

Come do your Christmas shopping at

M.T.S.U.'s  
Second Annual



## HOLLY BERRY BAZAAR

Saturday, November 3

9 a.m. til 6 p.m.

Sunday, November 4

Noon til 6 p.m.



Murphy Center, Track Level  
\$1.00 Admission

Parking on Greenland Drive

Sponsored by Pi Sigma Epsilon

## GET INTO

## THE

## PICTURE!

## MIDLANDER PORTRAITS...

SENIORS: OCT. 29, 30, & 31  
CALL 2815 FOR A TIME.

UNDERCLASSMEN: NOV. 1&2  
NOV. 1 CORLEW 9-12  
CUMMINGS 1-5

NOV. 2 WOOD/FELDER 9-5

FOR MORE INFO. CALL 898-2815  
AND THEY'RE ALL FREE...



# Opinions

## Attendance policy: is it really needed?

Most of us here at good ol' Middle are over the age of consent, right? Many of us pay for our own tuition and schooling fees. And, since for all practical purposes, we *are* adults, why in the world would we need attendance policies?

I know, the issue has been discussed over and over again, but it seems that every year the policies for certain classes change. For instance, in the English department, if a student misses over five classes, they automatically fail. Yet, in some political science classes, which in many cases are rougher than English classes, a student can miss as many days as his/her little heart desires. Why the drastic difference?

Is it because some departments consider us adults, while others feel we should stick to attendance requirements from high school? Is it because the school is trying to instill a sense of responsibility? Considering the majority of students here are non-traditional, it seems that the attendance policy would be unnecessary. How do you tell a student who is married, has children and works when not in class, that he/she needs to be "responsible"? Other students here work at night because the classes they need are not available during the evening. They work to pay for school, but occasionally, due to the late hours put in at their jobs, they may oversleep during the morning hours. Should these students be punished for their means of getting a better education (and many teachers do not feel oversleeping is a valuable excuse)?

Granted, there are some students who would fail many of their classes if it was not for the strict attendance policies in those classes. Others, however, have been able to receive not only passing, but high grades by only attending class three or four times during the semester.

If a poll was to be taken among the student body, there is a very good possibility that they would feel attendance policies were unnecessary.

Let's face it. A student who usually goes to class is going to go, and a student who usually skips is going to skip, regardless of an attendance requirement. Furthermore, if we as students pay for our schooling, we should have the right to make our own decisions regarding our performance in class, regardless of attendance. Let us decide if we're getting our money's worth.

So come on, give the policy a rest.



## Letters to the Editor

### Student chastised

It's been a busy week on the MTSU campus with many homecoming activities filling the schedules of those students willing to participate. As a rule, it is the Greeks who take part in the various events. Personally, as a member of the Sigma Chi Fraternity, holding two jobs and taking classes, my time is valuable but I see the involvement as being important.

This leads me to an incident that angered and alarmed me during Wednesday's scavenger hunt. While trying to get into the spirit of things, several of us were given the task of finding a human skull. Logically, we decided to go ask our helpful friends in the Biology Department. It was there that a Dr. Murphy, who I later learned is chairman of the department, responded to our request with "I'm not playing your damn fraternity games, get the hell out of my office!" Initially, my reaction was sheer anger, but quickly I decided to put aside my initial urge to confront, and instead I smiled, said "Thanks anyway," and went on my merry way.

I decided to let the power of the pen vent my frustration. I'm sorry we bothered him with our "fraternity games." There is more to college than merely going to class, but maybe Dr. Murphy was too engrossed in some important research to show us some common courtesy. Or, maybe Dr. Murphy didn't receive a bid when he was an undergraduate. Whatever the reason, it angers me to be labeled a fraternity boy playing games. I'm doing my part to keep our campus life strong; maybe

Dr. Murphy should consider being a bit more supportive of those of us who give a damn. I received an academic scholarship from this university, I work two very demanding jobs, I have many responsibilities.

Dr. Murphy, I'm not playing games. I hope when you read this you reassess your reaction; don't chastise students for being involved. Next time, a simple no will be sufficient, you can keep your expletives. It's your homecoming too, relax; try to enjoy it.

Glenn Pruter  
Box 5404

### Cusic angers reader

To the Editor:

I am LIVID as I have just read Don Cusic's oh-so-enlightened views on the current parking situation at MTSU. Thank you for your patronizing soliloquy and for putting us students in our place, Mr. Cusic! After all, we only PAY good money for our "privilege" to attend this university. How dare we expect "the right" to actually PARK here, too! Thank you for informing us that we are here "for the benefit of (ourselves)," while the faculty and staff, solely out of the goodness of their hearts, are here "for the benefit of the students." I am sure you will, out of your benevolent gesture to be here for our benefit, humbly refuse your PAYCHECK from now on, since we now know that you are certainly not here for YOUR benefit. I am glad you are enjoying the current parking situation. Why shouldn't you? Although I frequently hear there is not enough faculty parking, I constantly drive past numerous

"black" and "white" EMPTY spaces in my quest for NON-EXISTENT available green spaces on campus. Oh, and I wish I was a member of the housing staff, because they enjoy the "privilege" of having reserved spaces they apparently don't even need (judging from the fact you can find an abundant supply of EMPTY spaces in their reserve every day.)! Apparently, as you said, "membership *does* have its privileges."

But what about those of us who PAY to go here? Aren't we members? What about OUR PRIVILEGES? And heaven forbid I mention that it is funds from our sparsely-lined pockets that subsidize faculty salaries? Heck! We probably pay for the white paint that adorns your conveniently-placed parking space!

So what if we decided (and I AM NOT saying that we should) to put teacher parking in Egypt? Let them freeze to death walking to class! With all of this knowledge they have (according to Cusic), they certainly won't need to carry any heavy books! Then, you'd have to take your own condescending advice, Mr. Cusic. "...If someone finds it too terrible to hoof it for 15 minutes...how (will they) be able to make sacrifices in other areas of their life or cope when times are really tough?"

I am not bashing the faculty, as you bash the students, Mr. Cusic. I believe faculty should have decent parking spaces! I believe students should have decent parking spaces! But, logically, I know that this is not possible.

Please see **LETTERS**, Page 5

## SIDELINES

### STAFF

John-Darryl Athans-Editor-in-Chief

Shantell Kirkendoll-News Editor

Jennifer Bailey-Assistant News Editor

Kay Hilton-Opinion Page Editor

Mike Reed-Features Editor

Keeva Hamilton-Assistant

Features Editor

Tony Arnold-Sports Editor

Carl E. Lambert-Chief Photographer

Gregory Adkins-Production Manager

Greg MacLachlan-Assistant

Production Manager

Suzanne Woodard-Advertising Manager

Steven Finney-Assistant

Advertising Manager

Jenny Tenpenny Crouch

Student Publications Coordinator

### Opinion Page Policy

Unsigned editorials represent the viewpoint of the paper's editorial staff, while signed columns reflect the views of the author. All letters to the editor must be accompanied by the author's name, campus address and phone number. The author's identification will be verified, and unsigned letters will not be printed. Editors reserve the right to edit for libel, news style and length. Address letters to: **Sidelines**, Box 42.



**LETTERS** from page 4

There just is not enough room, and valet parking is just not feasible (ha ha). I do not have any solutions to this problem, and I do not offer any (the above hypothetical situation I posed is just that—hypothetical—simply in order to make a point). What I am bashing is your holier-than-thou attitude! I admit this situation does not seem to have any solution that would satisfy everyone. Therefore, WE ALL must share (teachers and students, alike) in the burdens of this problem, be it a small and trivial inconvenience compared to all of life's far more pressing problems. In the back of our minds, we know we must "grin and bear it," but we don't have to LIKE IT, do we? So what if we grumble?

Meanwhile, you might need to

re-evaluate your attitude, because you relay some disturbing thoughts in your article. Why do you talk down to the student population of this campus as if we are nothing more than ignorant bugs to be squashed and enamored by the awesome authority and superior intelligence possessed only by faculty and staff? You seem to insinuate that students are merely incidental components of this school, and that faculty and staff play much greater roles because "...they are required to be here day in and day out..." and "...the university goes on whether students are in class or not." But how viable would this school be without at least some students being in class at some point? You may go on without us—with research grants and the like—but how respectable would

a university without students be?

Don't take us for granted, Mr. Cusic! Get off your high-horse. I know "membership has its privileges," but even faculty, as well as students, are expendable.

Audrey Dellinger  
Box 1748

**A commuter's view**

This letter is in response to Don Cusic's Opinion concerning the parking problem on 10/25/90.

I agree there needs to be trees and flowers on this campus—it is a beautiful campus. At the same time we need to be realistic, there needs to be parking near campus, not a five-mile hike.

As a female commuter student, I see the danger in parking in the parking lot that is a brisk 15-20 minute walk. As a student, I don't expect to park right next to the

building where my classes are but I don't relish walking 15-20 minutes either.

I understand that parking is on a first come, first serve basis—which is fair. You said something about safety in your letter. I've almost been hit by as many faculty members as fellow students. I think both students and faculty members need to be reminded that pedestrians (in or out of crosswalks) have the right of way. You haven't been looking at the faculty lots lately, have you? If you had you would have seen that faculty members are having problems with time management also! Even you, "the privileged" are illegally parking!

I attended Western Kentucky University, where parking is a hassle because it is also a suitcase college. I believe there is close to

20,000 students.

All the existing parking lots have cost the students at MTSU enough. Why do away with them? MTSU needs to zone the parking lots differently; such as, at Western, we had lots zoned specifically for dorm residents, commuters, and faculty. Why should dorm residents give up their lots for parking? Do they not have the right to own and drive a car? (Isn't it enough punishment making them live in dorms?) It doesn't matter what fee you propose, students will pay it to have their cars. Wake up and see this IS a suitcase college! At Western, the parking permits jumped from \$5 to \$25 in two years. Guess what?! There were still as many cars on that campus if not more!

What makes YOU privileged? Just because you are a staff member—WRONG! As long as students pay for parking permits—they have the same right to parking.

You are right about one thing—we, the students, are here to obtain an education and you, the faculty, are here to provide us with that knowledge. But there's one minor detail you are forgetting—We the "unprivileged" are paying you the "privileged." That's ironic! So because you are on the payroll here, we should lay everything at your feet? Wrong answer. Students are only here for a short time, preparing for their future and career, but faculty are here because this is *your* career and *job*. Faculty are here not only to pass on their knowledge but the majority are here for the sole purpose of getting their paychecks!

One final suggestion—build a parking garage! Western has a 7-level structure which holds approximately 900 cars. Build a parking garage instead of a Rec. Center. I believe that that's needed worse for the growing population on this campus.

K. Camfield-Smythe  
Box 3436

**Correction:** The chili cookoff story in the Oct. 25 edition of *Sidelines* incorrectly reported that Corlew Hall placed second in the open-independent division. Corlew Hall placed first. *Sidelines* is happy to make the correction.

# \$20,000 IN SCHOLARSHIPS

We're looking for your best  
ideas for the Second Annual "Know When To Say When"  
Poster Competition.



This competition is being held in conjunction with National Collegiate Alcohol Awareness Week.

A share of the \$20,000 in scholarship money may be waiting for you!

We are looking for the best poster concepts that express the need for personal responsibility in the consumption of alcohol. Drawing ability will not be a factor in determining the winning concepts.

- Grand Prize Scholarship for "Best Concept"—\$5,000
  - Five (5) Runner-Up Scholarships—\$1,000
  - Twenty (20) Third Place Scholarships—\$500
- Scholarships are underwritten by Anheuser-Busch. Contest ends November 30, 1990.

Entry Forms may be obtained:

From Rosemary Cope

At KUC 122

If no Official Entry Form is available, you may write to: Poster Competition, c/o BSK, 1600 Geyer Avenue, St. Louis, MO 63104.



Chest pain could be a sign of heart disease. The sooner you see your doctor, the better your chances for life.



# Features

## Her Majesty relaxes after weekend victory



Helen Comer/Staff

**THE WINNER IS...:** LaShaun Turner smiles as she is named MTSU's 1990 Homecoming Queen. Turner, a senior business administration major, was nominated by the United Student Association.

**BRIAN WILLIAMS**  
Staff Writer

Once upon a time there lived a beautiful young woman who wanted to become royalty.

She planned and prayed, and she was invited to the final five ball.

Then one bright Saturday afternoon in the merry little land of MTSU, her wish came true and tears of joy fell through her eyes when her reign as queen began.

However, for LaShaun Turner, she wished that her homecoming queen campaign was just like that of a fairy tale, for her campaign was one of harsh — often racist — remarks scrawled across her posters.

So the first question asked of the 21-year-old senior business administration major was, "Was it all worth it?"

"Yes!" replied Turner joyfully. "I worked hard for it."

In her first interview since that eventful Saturday, Homecoming Queen LaShaun Turner had a lot to say about her successful campaign, her feelings as queen and a chance to talk about her unfortunate events.

"It was just an honor just to be nominated by the USA (United Student Association)," Turner said.

"It was," as she puts it, "my sorors (her sorority, Delta Sigma Theta) that led me to run for homecoming queen."

"I had the support of everybody that I knew," Turner said modestly. "Everyone, from my homecoming campaign committee to my sorority and the students, seemed willing to help with the campaign."

"I put my total self in my campaign," Turner explains. "I could not have done it without them."

Turner said she felt she had as good of chance as anyone else to win but admitted it was a nervous two weeks, especially that Friday and Saturday.

"When we were practicing Friday, it finally hit me," Turner said. "Then on Saturday (waking up at 5:30 a.m.) as we were walking on the field, my heart was beating very fast."

And in explaining her reaction upon the announcement that she had won, Turner said she was "happily overjoyed."

"I felt relieved the tension and nervousness was all over."

Turner also said the time spent with the four other finalists was enjoyable.

"We were all nice to one another," Turner said. "It wasn't like a war."

But even with all of these joyful feelings and expressions, she also had some words of regret about events involving her vandalized posters.

"I hate that it happened, and it is over," said Turner. "I think the people who wrote those things are shallow-minded and ignorant."

"I feel sorry for them," she concludes.

"I really do not know if there is a set agenda for the homecoming queen," Turner said surprisingly when asked how she intended to reign, "but I will represent MTSU in a very positive way at all times."

"I'm just looking forward to having a successful year as homecoming queen." ■

## 'Night of the Living Dead' remake better than original

**JOE BOB BRIGGS**  
Drive-In Movie Critic

I admit it, I was a scoffer. I didn't believe they could do it. Me of little faith.

"Night of the Living Dead" — regarded by the drive-in-going public of the world as the greatest movie ever made — was rewritten two years ago, and a remake was announced. Not only did it have the blessing of George Romero, but George Romero was gonna write and produce the remake.

Excuse me, but this would be like Mark Twain waking up one morning and saying, "You know that Huck Finn thing I did? I don't like it anymore. I'm doing it again."

And so everybody went "George! No! Please! You're senile! Don't try it!"

But he did it. He turned over the direction to Tom Savini, his special-effects makeup guy, the man who's made a whole career out of building slimy pus-filled ghoul faces.

We kept trying to talk him out of it. "George, don't do it! We love the black-and-white! It won't work in color!"

But he kept on.

Menahem Golan, the Israeli king of the ninja flick, announced he was producing the remake.

"No! Menahem! Please! This will be a bigger turkey than 'Treasure of the Four Crowns!'"

And Menahem said said, "What is 'Treasure of the Four Crowns?'"

And we yelled back, "'Treasure of the Four Crowns' is a 3-D Indiana Jones ripoff full of Spanish extras that you made in 1982!"

And Mehaem said, "I made that?"

And then they got to the point of no return: they started casting the lead roles — in Pittsburgh.

Pittsburgh, the city where it all started. 1967. George Romero was an unknown director of TV commercials. One day he wrote a script called "Night of the Flesh Eaters." He hired some amateur actors. He conned a crew into working for him. He got investors. Seven months later, the modern horror film was born. (The distributor retitled it "Night of the Living Dead.")

One night, for no reason, the zombies rise up out of the earth and start devouring the United States. Seven people are holed up in a Pennsylvania farmhouse, trying to decide which is worse — fighting the flesh-eating zombies or fighting each other.

And zombies have never been the same since.

The "Zombie Stomp," herky-



**THEY'RE BACK:** They're dead, they're hungry, and they're nastier than ever in the new improved version of "Night of the Living Dead." George Romero rewrote his now classic horror script for another go-round at the box office. This time the zombies are in color. Look for a different ending than the 22-year-old original.

jerky movement of Romero's drunken, stumbling zombies, has been adopted by zombies in every movie since then. Brain-eating first became a staple of the American zombie diet in this flick. And it was the first movie where the

white guy wasn't the hero. Women did the clear thinking. The black guy did the fighting and protecting. And the white males just got in the way.

In other words, it was also the first democratic zombie movie. In

the fifties, all the heroes were Republicans, fighting against Russian-type space aliens that were trying to take over our minds, and the women all stood by their men. In George Romero's movies, the Please see **JOE BOB**, Page 7



OE BOB from page 6

women have to knock the men out of the way with a rifle butt to get a good crack at the mostly white, mostly male zombies. (Actually, the zombies are pale yellow in the remake, but I don't think George is making an Asian statement yet.)

In 1968 George had a hard time getting anybody to release "Night of the Living Dead," but by 1970 it was already considered the greatest horror film in history. Romero has made two sequels, "Dawn of the Dead" and "Day of the Dead," and one of the original producers has done an excellent comedy version, "Return of the Living Dead." The original movie has probably been seen by more people, worldwide, than any other horror flick except "Psycho."

And now they've done it again. They've not only done it again. They've done it better.

This time, with professional actors, with color, with special effects, with zombies that out-zom-

bie the original zombies, they've told the exact same story, with about five minutes of changes in the plot, *just enough* to give it a great surprise at the end, and even though you've seen it before, and even though you know what the zombies are gonna do, and even though you know what each of the people inside the house is gonna do, it still scares the bejabbers out of you and satisfies the first rule of drive-in moviemaking: Anybody can die at any moment.

I'm humiliated that I was such a doubter.

I apologize to Mr. Savini and Mr. Romero.

Wheel in the Academy members from Palm Springs. Hook up their IV's. Force em to watch this.

Because, as Barbara says, "They're us. We're them and they're us."

Zombierama.

No breasts. Twenty-one dead

bodies. Exploding pickup. Exploding supporting actors. Neck-crunching. Zombie corral. Zombie target practice. Zombie bonfire. Eighteen gallons blood. A 74 on the Vomit Meter. Kung Fu. Zombie Fu. Drive-In Academy Award nominations for Patricia Tallman, as Barbara, one of the the greatest screamers in moviedom, for slowly going crazy with a shotgun in her hand, and for saying "what's happening?"; Tony Todd, as Ben, for doing the impossible, surpassing the original starring performance of Duane Jones, and for saying "This is hell on earth"; Tom Towles, best known as Otis in "Henry: Portrait of a Serial Killer," as Cooper, for stealing the TV, barricading himself in the cellar, slapping his wife around, and screaming "You bunch of yoyos!"; and for Tom Savini, the director, for perfectly preserving drive-in history.

★★★★★

Four stars. Joe Bob says check it out. ■

## Campus Paperback Bestsellers

1. **Presumed Innocent**, by Scott Turow (Warner, \$4.95) A shocking tale of betrayal and murder
2. **The Authoritative Calvin & Hobbes**, by Bill Watterson (Andrews & McMeel, \$12.95) More Calvin & Hobbes cartoons
3. **Clear and Present Danger**, by Tom Clancy (Berkley, \$5.95) CIA's battle against Colombian drug cartels
4. **The Joy Luck Club**, by Amy Tan (Ivy, \$5.95) Destinies of Chinese immigrant women and their Chinese-American daughters
5. **All I Really Need to Know I Learned in Kindergarten**, by Robert Fulghum (Ivy, \$5.95) Uncommon thoughts on common things
6. **The Pillars of the Earth**, by Ken Follett (NAL, Signet, \$5.95) Intriguing events surround the building of a cathedral
7. **A Brief History of Time**, by Stephen W. Hawking (Bantam, \$9.95) Theory on the origins of the cosmos
8. **The Dark Half**, by Stephen King (NAL, Signet, \$5.95) After being destroyed by his writer, his pseudonym runs amok
9. **Codependent no More**, by Melody Beattie (Hazeliden, \$8.95) Solving your own problems
10. **It's Always Something**, by Gilda Radner (Avon, \$4.95) Story of her life and fight with cancer

## New & Recommended

**Oldest Living Confederate Widow Tells All**, by Allan Gurganus (Ivy, \$6.95) Lucy Marsden's voice takes us through some of American history's most exciting events and times - from just before the Civil War until the mid-1980s

**The Second Shift**, by Arlie Hochschild (Avon, \$9.95) Landmark study that takes us into the homes of today's two-career parents to observe what really goes on at the end of the work day

**Tales from Margaritaville**, by Jimmy Buffett (Fawcett, \$9.95) Collection of short stories, some fictional, some not, presenting the roamer's twin loves - the sea and the road

ASSOCIATION OF AMERICAN PUBLISHERS/NATIONAL ASSOCIATION OF COLLEGE STORES

AMERICAN  
CANCER  
SOCIETY®

**GREAT AMERICAN  
SMOKEOUT®**

★ LEAVE THE PACK BEHIND  
ON NOVEMBER 16

# SOUND SHOP

Cassettes, Compact Discs & Accessories

Jackson Heights Plaza

893-1860

Buy  
it

Try  
it



## Every Mother's Nightmare

•Walls Come Down•

•Bad On Love•

•Long Haired Country Boy•

ARISTA

7.99 cass.

12.99 cd

\*If you're not completely satisfied with this product, bring it back (with your receipt) within 2 weeks and you can exchange it for another cassette or cd of equal value.

sale ends 11-17-90



**AIM  
HIGH**

**HIGH-LEVEL CAREERS  
ARE LAUNCHED WITH  
AIR FORCE ROTC.**

Flying a 15-ton jet is not for everyone. But for those who can meet the challenge, it's a thrill that no other career can offer.

How about you? If you're thinking about life at Mach 2, think about Air Force ROTC immediately. It will launch the leadership skills you'll need as an Air Force officer - skills that will serve you for a lifetime. FAA-approved flight lessons will get your feet off the ground for the first time.

Start now. Contact

DEPT OF AEROSPACE STUDIES  
615-320-3710

**AIR FORCE  
ROTC**

Leadership Excellence Starts Here



**1902 E. Main**  
**5 Blocks From MTSU**  
**893-2111**

COUPON  
**\$2.00 OFF**  
Any Large Pizza  
With 2 toppings Or More  
**ONE PIZZA PER COUPON**  
Not Valid With Any Other Coupons Or Specials Expires 11-18-90

Fine Arts Committee presents

Roman Polanski  
film of**MACBETH**

Jon Finch, Francesca Annis, Martin Shaw  
Columbia; Directed by Roman Polanski  
Color; Rated R, A-4; 140 minutes

An absolutely stunning conversion of Shakespeare to film. Roman Polanski adapts the great tragedy with a smooth, intelligent screenplay written in collaboration with Kenneth Tynan. It contains all the classic tragic elements of murder, guilt and revenge.

**SUNDAY CINEMA**  
Sunday, November 4, 7 p.m.  
KUC Theater  
FREE and OPEN to public.

For more  
information  
about  
these  
events,  
please  
call  
898-2551.

**TOMORROW NIGHT!!**  
**BANJO**  
**MELTDOWN II**

A CONCERT OF EXTRA-ORDINARY  
DIVERSITY AND INFLUENCE --  
AN ENTIRE SPECTRUM OF TALENT.

**EDDIE ADCOCK**  
**GRANDPA JONES**  
**DOC WATSON**  
**DOUG DILLARD**  
**WADE MAINER**  
**ALICE GERRARD**  
**JOHN HARTFORD**  
**TAJ MAHAL**  
**JOHN MCEUEN**

**FRIDAY, NOVEMBER 2, 7 PM**  
**TUCKER THEATER**  
**TICKETS = \$10.00**

**DANCE!**  
**IT'S HAMMER TIME**

ANOTHER MTSU  
GET DOWN  
PRODUCTION

**THURSDAY**  
**NOVEMBER 8**  
**DANCE STUDIO A**  
**10 P.M. - 1 A.M.**  
**ADMISSION = \$2**

2 FREE FLOOR TICKETS  
TO M C HAMMER CONCERT  
TO BE GIVEN AWAY !!!!



**THE GREATEST BANJO CONCERT  
IN THE HISTORY OF MUSIC**



*A student programming  
production!*

**BANJO MELTDOWN II**  
**FRIDAY NOVEMBER 2 7:00 PM**  
**TUCKER THEATRE \$10.00**

Eddie Adcock  
Martha Adcock  
Etta Baker  
Danny Barker  
Bill Birchfield  
Creede Birchfield  
Joe Birchfield  
Janice Bir  
Charles Bi  
Kate Briel  
Paul Brown  
Andy Cahan  
Bob Carlin  
Martha Carson  
Jean Chappel  
Pat Cloud  
Janet Davis

Doug Dillard  
Joe Drumright  
Bill Ellis  
Tony Ellis  
Minnie Garcia  
Grandpa Jones  
Bill Keith  
Derek Lillywhite  
Taj Mahal  
Julia Mainer  
Wade Mainer

Mick Maloney  
Charlie Marion  
John McEuen  
Curtis McPeake

Don Stover  
Pat Sykes  
Tony Trischka  
Buddy Wachter  
Stephen Wade  
Doc Watson  
Pate Wernick

**JUST CONFIRMED:  
BELA FLECK!!**

...sands  
Akira Satake  
Mike Seeger  
Pappy Sherrill  
Matokie Slaughter  
Ralph Stanley  
Jody Stecher  
Roni Stoneman

These artists  
have agreed to  
perform. The  
list is subject  
to last minute  
changes.

Tickets are available NOW in both on-campus  
box offices. For information call 898-2551.



# Sports

## Raiders control own destiny

**ELIZABETH POPOWSKI**  
Staff Writer

"Our destiny is in our own hands," said MTSU kicker Matt Crews.

With two games remaining in the regular season, the Blue Raiders do have their own destiny to control.

This fall, the MTSU football team has broken numerous team and individual records in pursuit of their 8-1 overall record. They stand at 3-1 in OVC action with the only loss coming to top-ranked, unbeaten Eastern Kentucky.

MTSU's Blue Raiders have been ranked in the nation's top twenty every week this season, holding on to the number four spot for the past four weeks.

At the present moment, the Raiders have a golden opportunity to see the home turf during the playoffs.

The remaining two contests of the season will decide their fate, however. The Blue Raiders have conference contests against Murray State (Nov. 10) and arch-rival Tennessee Tech (Nov. 17).

Easy wins, right? Wrong!

The Racers are down this season and have been batted around like a metal ball in a pinball machine. But, current history shows that the Raiders have about as much difficulty winning in Murray as they do anywhere in the nation.

You have to look back in the record books to the year of 1984 before you find a "W" marked beside the 19-16 score.

Tech has been down the past few seasons but looks to be as strong as ever at this point. Naturally, being arch-rivals, the Eagles always show up to play when time to face the Raiders and with the talent they possess this season, it has the makings of a great game.

In fact, this year's Tech team broke the top twenty barrier. The Eagles perched in the No. 18 spot the past two weeks before dropping out of the poll after suffering a 29-20 loss to Eastern Kentucky last weekend. Remember, MTSU's potent offense could only muster seven points on EKU.

"We have to do them (the remaining games of the season) one at a time," said MTSU junior tailback Joe Campbell.

Campbell is a fine one to talk. This week's OVC Offensive Player of the Week, Campbell has led the Raiders in their quest for wins and records.

Last weekend against Morehead State, the junior tailback broke two school records. He eclipsed the mark for most touchdowns scored in a season as well as career. He also surpassed the single season scoring record.

To date, Campbell has rushed for 1,119 yards this season, moving him to fourth as the single season rushing leader in MTSU history. He also is the second leading rusher in Division I-AA football heading into the final two games.

"Anytime I'm playing, I want to set a personal goal. Every time the team or I break a record, it feels great," Campbell explained.

The big record that seems to have eluded Campbell so far this season is the most yards gained on the ground in a single game. The record, set in 1984 by Vince Hall, has been within sight in a couple of contests, but Campbell was not able to break it.

In the 65-17 thrashing of UT-Martin, Campbell's 226 yards came in three quarters before he took his place on the sidelines for the remainder of the game to avoid an unnecessary injury.

At one point last weekend, he had 247 yards. He came in late in the third quarter and carried the ball. However, he found nowhere to go and made an attempt to go back into the backfield in order to search for a small opening to run through. He found none and suffered a 12-yard loss. The carry was his last of the game.

Right now, the Blue Raider team is also raising a few eyebrows. The squad is ranked in numerous NCAA Division I-AA categories.

The offense is eighth in scoring offense, sixth in rushing offense and fifth in total offense.

MTSU's special teams have not gone unnoticed either.

The Raiders have positions in three national categories. They are tenth in net punting behind the leg of Chuck Daniel. Walter Dunson is seventh in kickoff returns.

But the big record maker is Crews. He is 17th in the nation with 11 field goals. He leads the OVC in kick scoring and is second on the team, accounting for 67

Please see **DESTINY**, page 10



David Hardinge/Staff

**GOT IT!!!** Todd Davis is leaping high into the air to try and catch an errant Morehead State pass in action last Saturday. The Blue Raiders won the game 37-0 and have two contest remaining before the playoffs start.

## Raiders to hit M'boro court Saturday at RHS

**TONY J. ARNOLD**  
Sports Editor

MTSU students and fans will have a chance to catch a glimpse of the 1990 Blue Raider basketball squad Saturday night.

The Blue Raiders will take the court at Murfreesboro's Riverdale High School at 7 p.m.

"We'll need to put our players in front of some fans by that time," MTSU head coach Bruce Stewart said in staff reports.

"It gives our fans a chance to see what we have but it gives our coaching staff an opportunity to do some evaluating above and beyond what we can do in our regular practice sessions."

MTSU's squad will sport three returning starters. These include 6-7 junior forward Quincy Vance

who averaged 10.4 points per game along with 8.5 rebounds. 6-5 sophomore guard Robert "Cat Eye" Taylor (12.8 ppg., 3.2 rpg.) and 6-9 senior center Chris Ingram (10.6 ppg., 5.5 rpg.).

Other returnees from last year's 12-16 squad include junior forward Titus Jackson, junior guard Jeff Hunter, junior guard Mike Buck and sophomore center David Clark.

Stewart managed to lure six new players to help out this season.

These include 6-1 point guard Greg Christian, 6-3 guard Ramond Davis, 6-2 guard Tim Corder (who prepped at Riverdale High), 6-3 guard Kelvin Hammonds, 6-7 forward Jeff Clifton and 6-9 center Warren Kidd. Admission is free to the public

## Raiders place well

**TONY J. ARNOLD**  
Sports Editor

MTSU's track teams competed in the OVC track meets this past weekend with nothing to lose and everything to gain.

Both the Lady Raiders and Blue Raiders ran at the Arlington Golf Course in Richmond, Kentucky with dreams of winning the titles. Unfortunately, no one brought home a gold trophy but they did have a good showing.

The ladies ran a 5,000 meter course with Carena Winters winning the event with a time of 18:14.9.

The highest place that a Lady Raider took was an impressive fourth. Karen Barnes accomplished the feat for MTSU with a time of 18.48.

One other Lady Raider placed in the top ten. This was Diane DeOliveira who ran the course in 19.17.

Other finishers included Kiya Thomas (11th, 19.39), Lea White (22nd, 20.50), Leigh Weathers

(25th, 21.19), Sharon Smith (26th, 21.35) and Linda Brewer (37th, 23.51).

The team totals were calculated by adding the runners place of finish. When the tallying was done, MTSU finished an impressive third.

Eastern Kentucky finished first with 25 total points. Murray State was second with 72 points. The Raiders tallied 74.

MTSU's men competed on a 8,000 meter course.

The highest any Blue Raider finished was 28th. That belonged to Jason Welch who finished the course with a time of 30.09.

Rob Calvin of Eastern Kentucky won the men's event with a time of 25:28.4.

Other Blue Raider finishers included Jeff Garrett (30th, 31.11), Steve Ryan (32nd, 32.21), Eric McCrum (33rd, 32.22) and Chris Layne (35th, 33.42).

The Raiders finished fifth in the total standings. Eastern Kentucky's men won with the low total of 25. MTSU had 158 total points.■



# Is Eastern Kentucky unbeatable?

Last week, nothing unexpected occurred.

The Raiders continued their torrid winning pace by destroying Morehead 37-0.

If you remember, I warned everyone to look out for Orlando Crenshaw to break loose on a punt return.

It didn't exactly happen but he did come close. The 5-5, 175-pound Raider managed to break

Vanderbilt pulled out a win even though they lost by a point to Mississippi. The 'Dores showed up a few people, including myself, by playing like a good football team.

The Raiders have the week off this weekend but there are several other games around the nation. Let's start with some of the area ones.

## Eastern Ky. at Austin Peay

Despite the Colonels' woes, Eastern should have no problem disposing of the Governors this weekend.

EKU's quarterback, Lorenzo Fields, is out of commission with a broken leg. When he went down with the injury against Tennessee State, the Colonels may have seen their national title hopes slip also.

Eastern is still a tremendous team with Tim Lester and Markus Thomas in the backfield. Eric Dance is good for Peay but still is no comparison.

This one is like placing a junior high team on the field with the pros and Peay will still be looking for their first victory of the season when the day is done.

EKU 47 Austin Peay 17

## Murray St. at Morehead St.

Both of these teams need an

OVC win and are willing to do just about anything to get it.

Murray, who is used to being near the leaders, is sitting in the cellar with a 0-3 OVC mark. Morehead isn't so great either with its 1-3 record.

Murray's strength is defense while the "O" is the key for Morehead.

Perhaps the key to this one lies in the ability of Morehead QB Chris Swartz.

The senior was knocked silly last week by a Blue Raider and was forced to leave the game in the second quarter. He suffered a mild concussion but is expected to appear under his center this weekend.

Whether he cleaned the cobwebs out of his head or not is yet to be seen.

Morehead 21 Murray 17

## Tenn. Tech at Tenn. St.

This one should be a dandy.

The Tigers seem to have improved after the 38-6 pounding they received from the Raiders to open the season.

Tech has already proven that they are much better than they have been in recent years.

Tech will have to rebound from a disappointing 29-20 loss to East-

ern Kentucky. TSU is riding a 23-17 win over Murray into the contest after being thrashed by the Eastern team 55-17.

If the EKV game means anything, it's obvious that Tech should win. However, the Eagles not only lost their game last week, they most likely watched the OVC title slip out of grasping range, causing me to view them as being extremely down.

TSU in a squeaker.

TSU 31 Tech 28

## Alabama at Mississippi State

Both teams started slow but have shown improvement lately.

Two weeks ago, the Crimson Crowd stunned the Volunteer State by beating Tennessee with a last-second field goal.

Last weekend The Tide slipped to rival Penn State 9-0.

Mississippi shocked the nation by playing Auburn as tough as anyone, except UT, of course.

So, which team will show up for both teams this week?

The Tide will roll once more.

Alabama 17 Mississippi 6

## Auburn at Florida

Another dandy.

The Gators feel like they are capable of beating anyone in the nation. They might be right.

They will have a chance to prove it this weekend when the Auburn squad comes rolling in after squeaking by Mississippi last week.

If the Gators can pull off the upset, they will not only severely jeopardize Auburn's chances of national crown, they will rekindle their hopes of an SEC title along with teams like UT.

If you're a Vol fan you have to pull for the Gators.

If you are realistic you have to go with Auburn.

If you listen to me, you will take the Gators in Tallahassee. Florida 32 Auburn 28

## Temple at Tennessee

OK all you die-hard OVC fans, here's your chance to compare MTSU to the big dogs in an orthodox way.

The Temple Owls downed Austin Peay early in the season by a score of 28-0. MTSU routed Peay by a score of 56-7. If the Temple squad upends the Vols, I guess that MTSU is better than UT because they beat Peay by more points, right?

Well, not really, and I think might be as confused as you are.

Please see **LINE**, page 11

## On The Line By Tony J. Arnold

loose for a big return. The only man that could catch him managed to make Crenshaw cut back inside where the galloping Eagles behind caught up and took him down.

At this point, with the way the Raiders have been looking, I am a little tempted to jump ahead of myself and say we will be playing on Dec. 15. For those of you who don't know, that's the date of the national championship.

Tennessee had the weekend off last week to lick the wounds inflicted during the Alabama loss.

## DESTINY from page 9

points—right behind Campbell's 86.

"Practice has gone well ever since the Eastern [Kentucky] game," Crews explained.

Despite the offensive explosion, the "O" wouldn't have as many opportunities to score if the "D" wasn't doing its job.

MTSU's defense has only allowed its opponents to an average

of 10 points with 255 yards per game.

They too rank highly in the national statistics. The Big Blue is on top when it comes to scoring defense. They are 17th in rushing defense, fifth in total defense, fourth in passing efficiency defense and tied for 15th in the turnover margin department.

The defense is led by linebac-

kers Scott Boykin, Mike Caldwell and Anthony Coleman, safety Marty Carter and tackle Chris Burns.

Boykin leads the team with 83 tackles. He has eight for 20 yards in losses and four pass break ups.

Carter is second in tackles with 64. he has broken up four passes, recovered three fumbles and caused a fumble.

Burns only has 37 tackles, but, when you look at the rest of his stats, he is pretty impressive. He has eight tackles for 56 yards lost and three sacks for 34 yards lost. The big 6-5, 260-pound junior also has two pass breakups.

By looking at the numbers, one might get the impression that MTSU is a great football team.

"We are capable of playing a

great football game every time we come out. We have to be motivated," said Campbell.

With the last two games being conference action, only time can tell the outcome of this winning squad.

"If we keep our heads on straight, we will make the playoffs. We can't overlook anybody," Crews closed. ■

## Join Our Revolution

At the *Midlander*, our staff is working to revolutionize the concept of yearbooks by creating a 1991 edition that is more visually creative and contains subjects that are of interest to the students.

Help support a Revolution and purchase a 1991 *Midlander*. For details contact our renegades at 898-2815 or write to Box 42.

## COLLEGE GRADUATES

Put your education to work—become a  
**Lawyer's Assistant**  
"The Career for the 90's"

at The National Center for Paralegal Training

- Oldest and largest graduate level ABA-approved program in the Southeast
- Employment assistance—over 1,000 employers in 38 states have hired our graduates
- 3 month day program with housing available
- 7 month evening program
- Diversified Curriculum—specialize in Litigation, Corporations, or Real Estate and Probate — including "Computers in the Practice of Law"

Meet with our representative  
Thurs., November 15, 1 pm - 4pm

Contact College Placement Office for an appointment.  
Call or write for a free brochure and more information.

The National Center for Paralegal Training  
3414 Peachtree Rd, NE Atlanta, GA 30326  
800-223-2618 In Georgia, call 404-266-1060

Please send me information about a career as a Lawyer's Assistant

Name \_\_\_\_\_

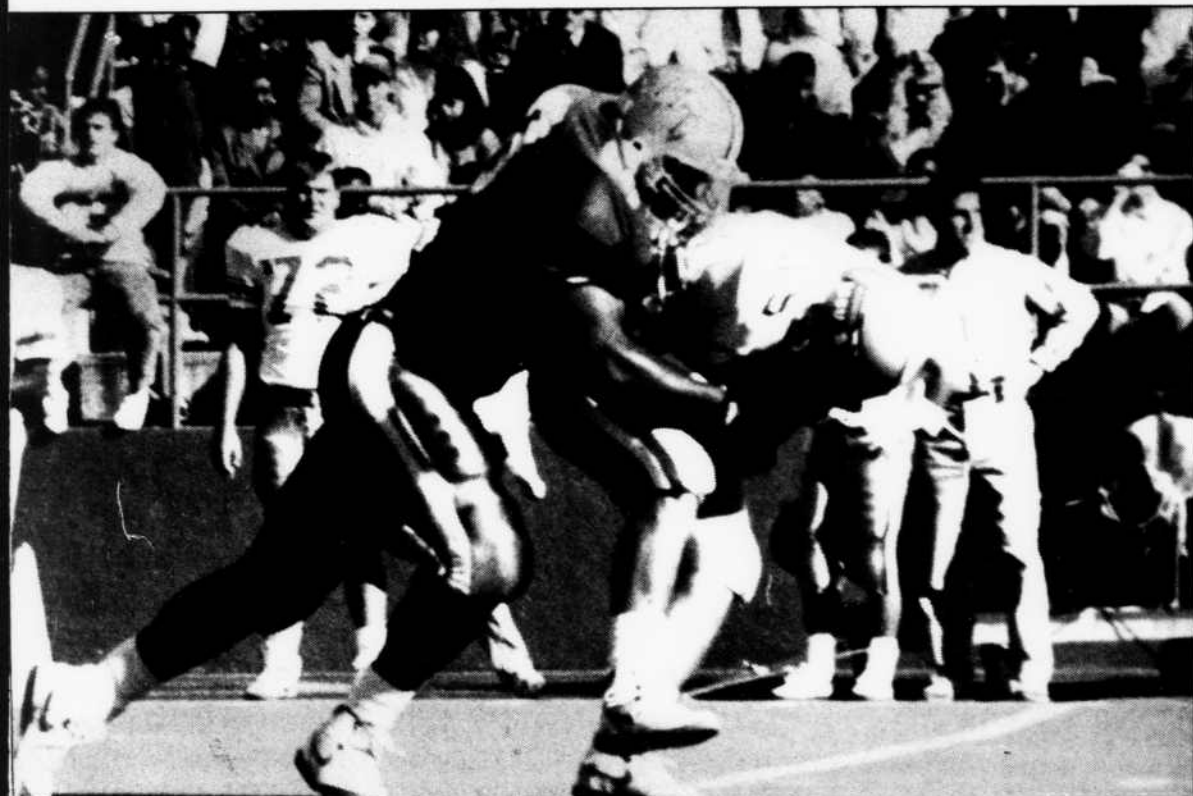
Address \_\_\_\_\_

City \_\_\_\_\_ State \_\_\_\_\_ Zip \_\_\_\_\_

College \_\_\_\_\_ Yr. Grad \_\_\_\_\_

Phone: (day) \_\_\_\_\_ (eve) \_\_\_\_\_





David Harding/Staff

**SACK TIME:** Blue Raider defensive tackle Chris Burns wraps up Morehead quarterback Chris Swartz in action last Saturday. The Morehead QB was later hit again causing a mild concussion.

**LINE** from page 10

but I think we can settle it all by picking a Volunteer romp.

This Saturday Temple will enter a "Temple of Doom" in Knoxville.

The Vols won't be a friendly host after having a week to think about Alabama.

Tenn. 41 Temple 10

Montana at Nevada-Reno Area game, right?

Well, it does contain a little importance, seeing that the Wolf Pack in Nevada sat in the Division I-AA poll's third spot. MTSU is fourth and a costly loss should move the Raiders closer to the top.

However, is being on top really that important?

The team that finishes the season on top of the polls will get to play on its home turf during the playoffs (except for the championship game). The home field advantage is always pleasant.

First, MTSU must win the remainder of their games. Second, Nevada, SW Missouri and Eastern Kentucky must lose one of their final games.

The Wolf Pack will be the first to fall this weekend.

Montana 35 Nevada-Reno 32

SW Missouri St. at N. Iowa

SW Missouri will round out the season with two tough conference (Gateway Conference) contests, the first coming this weekend against a tough Northern Iowa

squad.

However, someone is going to have to sneak up on the Bears soon because they have a great QB by the name of DeAndre Smith who plans on winning the national crown.

SW Missouri 34 N. Iowa 17

Here are a few others that might be of interest.

Appalachian St. 17 Marshall 21

Arkansas 42 Rice 17

Clemson 28 N. Carolina 16

Georgia Tech 31 Virginia 34

LSU 27 Mississippi 34

Miami 17 Pittsburgh 6

Michigan State 21 Indiana 17

Nebraska 33 Colorado 42

Notre Dame 49 Navy 7

**Have you used yours today?**

**Can you  
really  
afford  
not to?**



**University  
Savings Card**

000001

Signature

USC

Card must be presented before ordering mdse/ services  
Not valid on special sale mdse/services  
Merchants retain right to ask for University I.D.

BRIN-DANIELS ASSOCIATES



**University Park**

**Super Student Special**

Regular Rent \$325/month

**SAVE \$130 off 1st month rent!**

**PLUS an additional \$50 off 1st month rent**  
if deposit is taken before November 30!

**Semester Rate Special: \$1250 per semester**

NOW ACCEPTING APPLICATIONS FOR SPRING SEMESTER

FREE basic cable and HBO!

902 Greenland Drive

893-1500

**527**

**MAINSTREET**

**Thursday, Nov. 1**  
**Mainstreet Halloween**  
**Party**  
**with**  
**The Icons**

**Friday, Nov. 2**  
**Klass**  
**12 O'Clock High**

**Saturday, Nov. 3**  
**Fly by Night**  
**Farewell Show**



**Sunday, Nov. 4**  
**DeSsau**

**Wednesday, Nov. 7**

**Tall**  
**Paul**



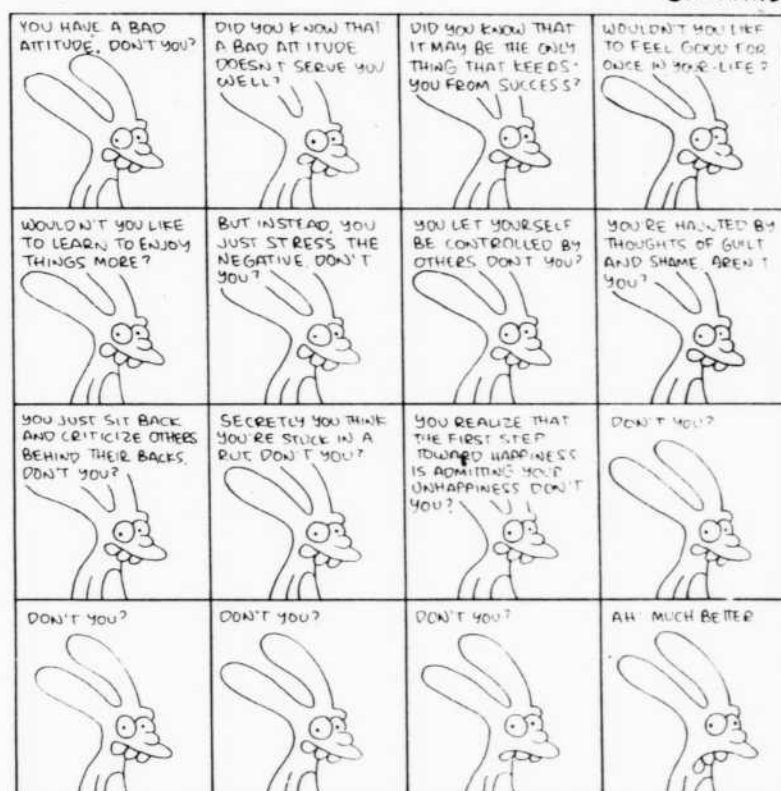


# Comics



## LIFE IN HELL

©1989 by  
MATT  
GROENING



# Classified

## 1. HELP WANTED

Waiters/Waitresses needed for lunch and dinner shifts. Flexible hours. Benefits available. No experience necessary. Will train. For interview call 254-9010.

Personable, aggressive, and dependable individuals wanted to interview consumers in Hickory Hollow Mall. Flexible hrs. available. Call 731-0900, Monday-Friday, 11 A.M. - 4 P.M.

Want a job in a new and exciting field with flexible hours? Join **MENU EXPRESS!** We need delivery drivers and dispatchers for Murfreesboro's first full-menu delivery service. You will be responsible for dispatching or delivering fine meals to customer's homes and offices. You need to be self-motivated, well groomed, and have a good driving record. Job Placement Office in Rm. 328, KUC or call 898-2500.

Addressers wanted immediately! No experience necessary. Excellent pay! Work at home. Call Toll-free: 1-800-395-3283.

## 20. FOR SALE

Music Equipment for sale: Alvarez Yari 12-string acoustic with new case. All equipment in mint shape. Call 895-8315 and make an offer.

Sony Compact Disc Player for sale. Call Nancy 893-8319 anytime.

AKC Rottweiler Puppies: 2 males, 2 females born May 16. All shots and wormed. \$200 Just a short drive halfway to Shelbyville. Call 684-5649.

For Sale Motorcycle - 1987 Kawasaki 454 LTD cruiser, lots of chrome, excellent condition, 9,900 miles, \$1,585. Call 274-2926.

## 35. SERVICES

**TYPING SERVICE.** EXPERIENCE TYPIST. Next day service available. Fast and accurate! Reasonable rates. Call 898-2815.

**The Movie Shop -** Open 24 hrs. Over 6,000 nintendo and movies. Tue. and Wed. New Releases, \$1 611 W. College, 895-3610.

**BALLROOM DANCE** Classes for Waltz, Rumba, Fox Trot, Tango, Cha-Cha, and Swing. Come join the fun! Registration, Nov. 6. Call 890-8350 day or 898-3391 evenings, Thursday (11/1/90) & Monday (11/5/90).

Japanese student wants to tutor American student interested in learning the Japanese language. Contact: Naoki Nagashima, c/o Joyce and Morgan Brewer, 4780 Whites Creek Pike, Whites Creek, TN 37189 or call 876-6317.

**TYPING SERVICES** Professional typing service on word processor. Fax service available also. Papers, resumes, cover letters, etc. Call Jeannie at 849-8219.

## 65. OPPORTUNITY

Earn \$11,000 a year part time marketing environmental products. No quotas. Work on your own schedule. Call 895-4937.

**WARRIORS LAIR** Paintball Playing Fields Moss, Tennessee Weekends & Holidays Reservations Only 648-2533 or 552-7113

## Policies

Sidelines will be responsible only for the first incorrect insertion of any classified advertisement. No refunds will be made for partial cancellations.

Sidelines reserves the right to refuse any advertisement it deems objectionable for any reason.

Classifieds will be accepted on a prepaid basis only, except for businesses with established accounts. Ads may be placed in the Sidelines or by mail, payment enclosed to Sidelines, 306 James Union Building, P.O. Box 42, Middle Tennessee State University, Murfreesboro TN 37123. For more information call 898-2815 or 898-2533.

Fill out this form completely and mail with check or bring to the Sidelines business's office

Name: \_\_\_\_\_

Address: \_\_\_\_\_

Phone: \_\_\_\_\_

Ad: \_\_\_\_\_

\_\_\_\_\_

\_\_\_\_\_

\_\_\_\_\_

Number of insertions \_\_\_\_\_ 20 words or less \$3.00, \$.10 per each additional word. 25 insertions 20 words or less \$50.00.

To place ad call: **898-2815 or 898-2533**