

SIDELINES

MIDDLE TENNESSEE STATE UNIVERSITY

Murfreesboro, Tennessee

Monday, November 18, 1996

Volume 72, Number 35

Evaluations under fire

By Christi Underdown / staff

A Faculty Senate special committee will be appointed sometime this week to work out the kinks in the student evaluating system.

For the past several years, students have been given a small list of questions and a Scan-tron sheet and told to evaluate their professors' behavior and teaching abilities with these materials. Recently, some of the questions included on the sheet have been subject to a debate among various faculty members unhappy with their standards, said Mary Elizabeth Stivers, president of the Faculty Senate.

In addition, the Southern Association of Colleges and Schools (SACS) — an organization that accredits many universities, including MTSU — has informed the administration that

this present instrument of evaluating must be revised.

Because of the large arguments the current evaluation process causes, a committee from the Faculty Senate will be appointed to create a satisfactory form of evaluation.

Stivers set the deadline for the project for the end of the academic year.

"We want a form that is good and reliable and will help the faculty to improve," Stivers said.

Students are also being asked to contribute their opinions through committees formed by the deans of the different colleges. More information about the student committees will be known at a later date.

The departmental chair and peer review committees — elected representatives of the department — depend on evaluations to help them

make recommendations for such things as promotions, tenure and annual evaluations.

The Scan-tron form of the evaluation will not change, because of the ability of the Scan-tron to review multiple answers in mass quantities during a short amount of time. Some departments, though, do include a supplement to the questionnaire, asking for any additional comments. Supplemental questions are not required, at present, and are totally up to the department.

Publicizing student evaluations as a resource for prospective students looks doubtful.

"We have to decide what the purpose of an evaluation is," Stivers said. "If it is going to be used as an instrument for making things better, the public doesn't need to see them." •

March of Dimes to jail students

By Ann Repasy/ staff

There will be a new edition to the KUC knoll this week: jail cells.

The associate dean of students, in coordination with the March of Dimes, is sponsoring a Jail-A-Thon this week to help raise money for the March of Dimes on Nov. 20 and 21 from 9 a.m. until 4 p.m. each day. President James Walker, Vice President of Student Affairs Robert Lalance, Dean of Student Life Thomas Burke and SGA President Christin Baker will act as judges and set "bail" for "arrested" students on campus, explained Sherry Ferguson, a secretary at the office of the associate dean of students.

Students can call 399-3200 to have other students on campus "arrested" by off-duty police officers or citizens dressed in police clothes. "Arrested" students will be put in the jail cells, Ferguson explained.

The only way for the "arrested" students to be set free is for them to call people for potential donations. When the students have raised enough money for the March of Dimes to make "bail," they are set free. If, however, students are unable to raise

enough money for "bail" after one hour, they are let go anyway.

"This should be a lot of fun," Ferguson said.

The March of Dimes is the first charity to use the "jail and bail" idea to raise money. In addition to the jail cells on the KUC knoll, there will be jail cells located at SunTrust Bank on East Main Street.

The goal for Rutherford County this year is \$20,000.

This money is used for research and advocate groups to help prevent birth defects and premature births. The March of Dimes advocacy has helped 10 researchers win the Nobel Peace Prize, and also has been the impetus behind the Food and Drug Administration's approval for the addition of the B vitamin folic acid for grain products — which prevents birth defects to the brain and spinal cord, said Mona Chase, community director of the March of Dimes.

This is the first time MTSU has sponsored a jail-a-thon. Anyone wanting to have someone arrested during the two days should call 399-3200 between 9 a.m. and 4 p.m. •

MTSU forms future plan

By Susan McMahan/ staff

Although the next century is still several years away, MTSU is already planning for it.

President Walker has appointed a 20-member committee of students, alumni and community residents to create an academic master plan, which will chart the university's academic plans into the 21st century.

"Our purpose is to establish a plan that reaches into the year 2010," said Faye Johnson, associate professor of sociology and anthropology. "We are looking at (MTSU's) academic progress and evaluating the needs of the region so we can make recommendations about enhancing these current programs and identifying new programs for MTSU."

Johnson said that the committee is currently receiving data that gives them a picture of what is happening outside of MTSU and projections — both internal and external — for the future.

The committee will continue to collect data until the end of the fall semester.

At the beginning of the spring semester, Johnson said, the committee will begin synthesizing the data.

The committee must report their findings and recommendations to President Walker — who originated the idea of the academic master plan — before June 30, 1997.

Members of the Student Government Association (SGA) put together a questionnaire for students to allow them input into the academic master plan. The questionnaires are available in the SGA office in the KUC.

"(The academic master plan) is a giant step forward for the university," Johnson said. "It's an exciting challenge for the future."

The next meeting of the Academic Master Plan committee will be Dec. 12 in the Alumni Center from 9:30 a.m. until 1:30 p.m. The meeting is open to the public. •



Brian G. Miller/ staff

Watch your step

Alpha sweethearts perform a step show on the KUC Courtyard last week. The event was part of Alpha week '96.

Off the Wire

Rwandan Hutu refugees take journey home

By Hrvoje Hranski

GISENYI, Rwanda (AP) — Every hour, 10,000 Rwandan Hutus trudged across the border to their homeland Saturday in a weary, rain-soaked column of humanity desperate to end the misery of their exile in eastern Zaire.

More than 200,000 refugees have streamed over the border since the exodus began Friday morning, the United Nations estimates. A downpour Saturday drenched the 25-mile line of men, women and children making their way from a now-deserted refugee camp and over the border into Gisenyi.

Fellow Rwandans lined the route beyond the border, applauding and hugging the refugees as they lugged their tattered bundles on a 20-mile slog from the border at Gisenyi to a U.N. transit center.

"I'm not afraid," said Pierre-Celestin Muyandekazi, a returning farmer. "I'm very happy to be in my country."

As night fell Saturday, up to 400,000 people on the Zairian side settled down to rest by the road before resuming their trek at daybreak. Another 600,000 Rwandan refugees remain cut off from aid in hills to the south.

The refugees had fled Rwanda

2 1/2 years ago, fearing retribution after a Hutu-led government presided over the massacre of a half-million Tutsis.

Hutu militias in the refugee camps in Zaire virtually held the refugees prisoner until Thursday, when an attack by Zairian rebels sent the militias fleeing into the hills and the refugees hurrying home.

The Tutsi-led government that ousted the Hutu leaders after the 1994 genocide has promised to treat the returning Hutus well, and most refugees who returned earlier have been allowed to resettle peacefully.

Amnesty International, however, expressed fear that the newly returning refugees might be subject to arbitrary punishment in connection with the genocide, joining the 80,000 other Hutus already in crowded Rwandan jails awaiting trial in the killings.

The refugees' unexpected return has overtaken a ponderous international effort to assemble a military force to distribute aid and create safe corridors to allow them home.

Rwandan leaders say there is no longer any need for military intervention, calling instead for aid in resettling refugees.

Defense Secretary William Perry said plans for the international force were still on, but that the United States and its partners will talk over the affect of the refugees' flight.

"It will not eliminate the need for humanitarian support, (but) it will substantially change the nature of that need," Perry said.

Rwandans in this lakeside border town watched the seemingly endless column of returning refugees with satisfaction.

"This resolves our problems," said Emmanuel Mazimpaka, headmaster of the local high school. "We were worried the refugees would attack us from the camps. Now they are coming home to help rebuild the country."

Many families were split up as the refugees swept through Goma and over the border. At least 3,000 lost children were taken to a school near the border, where aid workers called over loudspeakers for their parents.

Aid agencies set up tents to distribute water and high-protein crackers.

The U.N. World Food Program said it would feed the refugees for at least a month once they reach their homes. •



Brian G. Miller/ staff

Buddy Newman sets up tables in the Tennessee Room in the JUB.

Tennessee Room gets face-lift

By Randy Ford/ staff

An integral part of the MTSU campus is getting a face-lift.

The department of construction/renovation services is planning to remodel the Tennessee Room, located on the main floor of the James Union Building.

"The Tennessee Room is the front door to the university," said Debbie Westerfield, manager of construction/renovation services. "It serves as a place for most public functions and is used for day-to-day purposes, such as testing."

Renovation plans include upgrades to the room's lighting and sound systems, as well as carpet.

Westerfield said plans also call for a general updating of the room's decor.

"Mostly, it will include refinishing surfaces and repainting," she said. "It's just basically out of date."

According to Harold Smith, director of student programming, renovators are also "trying to re-do the air flow in the room to better regulate the room temperature."

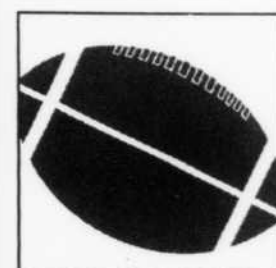
Renovation is set to begin Dec. 15 and is expected to be completed by Jan. 31. •

BASKETBALL PREVIEW

5



INSIDE THE LINES



11

SPORTS Raiders pull out exciting win

Student Access brings groups together on web

By Jamie Evans/ staff

Student Access — a new web site at MTSU — is a hidden treasure that is starting to sweep the campus.

"Student Access was made to bring a diverse campus together by making it so that similar groups can find each other," said Vince Guerra, one of the authors of the web site.

There are eight icons on the first page of the site that take students to their interested areas. Most of the areas are message boards where students can post anything they wish under the different categories.

However, there are many areas that are not message boards. One of these is called Software FTP — where students can actually shop for software for PCs and Macs.

The weather icon — a name that misrepresents all of its capabilities — allows access

to a variety of CNN-related items, like news from around the world. It also displays current satellite photos from any place on the globe.

There is also a chat house that is currently under construction.

"We are currently in the process of bringing in another server specifically for the chat room because we do not want to slow the other applications of this site down," Guerra said.

The chat room should be operating soon, Guerra added.

Student Access also has a feature for students on the go. Students can use the quickline directory to skip all of the different icons and go directly to their destination.

Student Access is located at www.student-access.com. Entering the page is quick, easy and free. For more information, students can e-mail the staff from the web page. *

TUESDAY, Nov. 19

The Erudit Emancipators will hold a meeting at 6 p.m. in Peck Hall room 346. For more information contact Angela Bond at 898-3954.

WEDNESDAY, Nov. 20

The AFAW has invited speakers to discuss the topic "Women: The New Factor in Politics?" at 3 p.m. in the JUB, dining room C. The speakers are Mary Ann Eckles and Nancy Allen. For more information contact Nancy Rupprecht at 898-2645.

THURSDAY, Nov. 21

The PSI CHI/ Psychology Club is sponsoring a Psychology Day Forum from 12:00 to 4:30 p.m. in KUC rooms 318 and 322. Speakers will discuss career and graduate school opportunities in psychology. Additional relevant information and materials will be available. For more information contact John Pennington at 904-8446.

MONDAY, Nov. 25

Raiders for Chirst will have an information table in front of the Phillips bookstore located in the KUC from 9-3 p.m. For more information contact the MTSU Christian center at 896-1529.

TUESDAY, Dec. 3

The ACT-COMP make up exam will be given in the Tennessee Room of the JUB at 8:30 a.m., 1:00 p.m., 6:00 p.m. All graduating seniors are required to take this test. For more information, please contact Ruth Watson at 898-2854.

FRIDAY, Dec. 13

Deadline to pay outstanding debts to the University in order to hear grades via TRAM and/or receive a printed grade report. *

Police Beat

Sunday, Nov. 10

Where: Corlew Hall
What: food and T-shirts stolen from room; estimated loss: \$200

Where: Rutledge Hall citation

What: Coat stolen; est. loss: \$350

Wednesday, Nov. 13

Where: MTSU campus
What: 2 student accounts found trading pirated software

Where: Call Box 14

What: 2 students left call box, ran away; both given citations

Thursday, Nov. 14

Where: Smith Hall - shower
What: keys stolen

Where: First St. and Cope Bldg.
What: Reckless driver given

Friday, Nov. 15

Where: Maintenance Dr. at Holmes
What: rear window in vehicle broken; estimated loss: \$100

Where: Todd Library - 2nd Floor
What: caller said someone tried to break into the change machine; estimated damage: \$100

CAMPUS CAPS DEADLINE

**1:00 Tuesdays & Fridays
They can be dropped off at
JUB room 308 A**

Committee to tackle safety concerns

By Jennie Treadway/ staff

If Murfreesboro was to experience a tornado, how would MTSU handle it? If the city was to have an earthquake, a fire storm, or if an earthquake on the roof of the KUC, what would MTSU do?

A newly-formed group called the Life Safety Committee was designed to manage any sort of problem on campus regarding its safety. Representatives from public safety, campus planning, energy management, and several other campus financial and safety administrations make up the committee. So far, the 10-member committee has met only once this semester.

At the meeting, the committee discussed potential projects for MTSU's safety, based

on the idea that "money was not an object," according to David Gray, the director of Facility Services. With growing technology, he says, MTSU must look into new forms of security.

"We're trying to figure out things like better fire alarms and security in and out of buildings," Gray explains.

New wiring, monitoring and possibly a new way of entering buildings using student ID's are all on the table for discussion. More video cameras in the 24-hour computer labs are also a topic of concern.

"We are looking at everything from a larger electrical standpoint," Gray says.

The committee has already been on a field trip to Knoxville, visiting the UT campus to see how its security

and safety programs function. To further explore security improvement possibilities, more trips for the committee will be planned to visit other schools in the future.

The committee plans to consult Diebold — the card company that MTSU uses for student ID's — to investigate new technology on the market. Ideas like using the student ID to enter dorm buildings and rooms have been suggested, out of the utmost concern for the safety of the students.

The committee also wants to look into the use of Fiberoptics, a high-technological communication system, for more effective campus-wide communication should MTSU face an emergency and action must be sought immediately. *

Workshop challenges toxic printing

Staff Reports

The MTSU art department is hosting a workshop for artists to explore newer, safer means of non-toxic intaglio printmaking.

The three-day event will take place in the Art Barn Nov. 21 - Nov. 23 (Thursday through Friday) and will feature a lecture by renowned printmaker Keith Howard titled "How to Make Prints to Die Without Killing Yourself."

Howard's lecture is free and open to the public and will be on Friday, Nov. 22 at 7:30 p.m. in the Cason Kennedy Nursing Building, Room 121.

The workshop is intended for artists and printmakers wishing to acquaint themselves with recently developed techniques for the intaglio process which avoid using toxic materials. Intaglio is a process of printing in which a figure or design is incised beneath the surface of a hard metal in order to be reproduced.

"Keith Howard is internationally known for his research in developing safer ways to achieve traditional intaglio printmaking effects in etching, aquatint, softground and photo-processes," said Christie Nuell, associate

professor of art at MTSU and organizer of the workshop.

Howard is the director of the Canadian School for Non-toxic Printmaking, which is the central organization for the International Alliance for Graduate Studies in Non-toxic Printmaking.

Anyone interested may attend any one day of the workshop for \$50 or all three days for \$150. Space is limited to 15 participants due to the size of the studio.

The MTSU art department has established a web site for printmakers. It can be found at: http://www.mtsu.edu/~art/printmaking/print_frames.html. *

This space for rent.

Place your ad in Sidelines. call 898 2533 for more details

Your friend down the hall
with the Macintosh computer

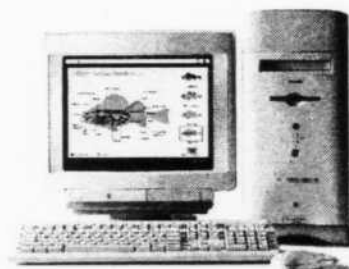


Power Macintosh® 5400
120 MHz/16MB RAM/1.6GB/8X CD-ROM
15" built-in display/keyboard
Now \$1,717

couldn't be happier that

Apple is offering a \$150 rebate

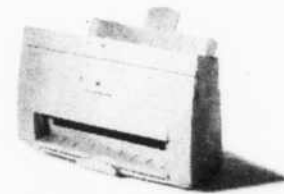
to anyone who gets their own.



Macintosh® Performa® 6400CD
180 MHz/16MB RAM/1.6GB/8X CD-ROM
15" display/keyboard
Now \$2,187

Check out Apple's Holiday Savings.

Right now Apple Computer is offering a \$150 rebate when you purchase your very own Macintosh® personal computer and an Apple® printer. It's one of the best chances you'll ever have to take ownership of the world's most innovative technology. Just think about it. You can get your work done faster. The stuff you create looks great. And you pocket \$150. So rub the sleep from your eyes, peel yourself off the couch and hit your campus computer store today. And leave your poor friend alone.



Apple® Color StyleWriter® 2500
720x360 dpi B/W, 360x360 dpi Color
Now \$323

MTSU Phillips Bookstore
Keathley University Center
Hours: M-T, 7:45-6:00 & W-F 7:45-4:30
<http://www.mtsu.edu/~phillips>
(615) 898-5116

Power Macintosh® 7200 120 MHz/16MB RAM/1.2GB/8X CD-ROM/15" display/keyboard Now 1,905
Power Macintosh® 7600 132 MHz/16MB RAM/1.2GB/8X CD-ROM/15" display/keyboard Now \$2,553
Apple® Multiple Scan 14 Display Now \$323
Apple® Multiple Scan 15 Display Now \$463

©1996 Apple Computer, Inc. All rights reserved. Apple, the Apple logo, Mac, Macintosh, Performa, Power Macintosh and StyleWriter are registered trademarks of Apple Computer, Inc. Apple must in rebate offer valid from November 2, 1996, through January 31, 1997, while supplies last and subject to availability. To qualify for rebate, printer, computer and an Apple monitor (if sold separately) must be purchased on the same invoice. Offer good on any Macintosh desktop computer with any Apple printer. Void where prohibited by law. See participating reseller for further rules and details. All Macintosh computers are designed to be accessible to individuals with disability. To learn more (U.S. only), call 800-600-7808 or 773-800-755-0601.

Around the World

Pope, Castro to Meet in Vatican on Tuesday

VATICAN CITY (AP) — In an extraordinary meeting of ideological foes, Pope John Paul II and Fidel Castro will hold talks at the Vatican on Tuesday that could help shape the future of Cuba.

The meeting could lead to a papal visit to the Communist island, the only Latin American country John Paul has not visited in his 18-year reign.

U.S. Bosnia Commitment Expected to Last Another Year

WASHINGTON (AP) — With Bosnia's ethnic factions still on the brink of violence, the Clinton administration is prepared to keep up to 10,000 U.S. soldiers in Bosnia into 1998.

Clinton administration officials, cautioning that the president had not yet signed off on the mission, said he wants to consolidate the gains made in the war-torn Balkans during the past year's NATO peacekeeping mission.

Russian Mars-Bound Craft Fails to Leave Earth's Orbit

MOSCOW (AP) — Russia's celebrated mission to Mars failed early Sunday shortly after the rocket blasted off into space, dealing a serious blow to the country's struggling space program.

Military space force officials were unable to say precisely what went wrong.

A score of nations, including the United States, France and Germany, sent scientific instruments to Mars aboard the Russian spacecraft.

Mother Teresa Granted American Citizenship

CALCUTTA, India (AP) — Mother Teresa, the Roman Catholic nun beloved around the world for her charity, became an honorary American citizen Sunday.

"This is a gift of God. I am afraid I am not worthy of it," Mother Teresa said after receiving the documents from U.S. Ambassador Frank Wisner.

Mother Teresa, 86, won the 1979 Nobel Peace Prize and leads 517



Missionaries of Charity centers around the world.

Kazak Officials Dispute Suggestions Their Pilots Were at Fault in Crash

NEW DELHI, India (AP) — Kazak officials, bristling at suggestions their pilots were to blame for a jet collision over India that killed 349 people, insisted Friday the crew knew the route and had a sufficient command of English.

The cause of Tuesday's crash between a Saudi airliner and a Kazak cargo plane has not been determined. Speculation has focused on communications breakdowns with pilots whose first language wasn't English and antiquated radar equipment at New Delhi's Indira Gandhi International Airport.

Duke administrators, students react to No. 1 food ranking

By Jon Huntley/ College Press Service

DURHAM, N.C. — Administrators say the results of a recent survey—which ranked the Duke University's food as the best in the nation—recognize the university's efforts to provide a healthier menu.

The survey, conducted by the Physician Committee for Responsible Medicine, measured over a five-month period the amount and variety of healthful food available at 38 major universities across the United States.

Duke University earned its No. 1 ranking based on the quality and amount of beans, grains and vegetables in entrees served at breakfast and dinner.

"Duke scored best because of the availability of alternatives to those artery clogging foods," said Dr. Andrew Nicholson, coordinator of the survey and director of preventative medicine for the committee.

The study was aimed at promoting healthier eating options at universities, said Nicholson, who added that many diseases in the United States can be attributed to dietary choices. It is essential, he added, that people learn to make proper dietary choices early to prevent these diseases from developing later in life, he said.

The University of Pennsylvania, which ranked second in the survey, also serves up a variety of health foods, said Nicholson. All dining halls provide extensive salad bars with low-fat dressings, while fresh and frozen yogurt is available at all meals.

Nicholson said the lowest-ranked universities and colleges, especially the U.S. military academies, served foods that were extremely high in fat and cholesterol. The only healthful food available, he said, was a green salad.

University dining officials said they were happy with the survey results, noting that the ranking reflects the efforts over the past decade to improve the number and diversity of healthful food options available. "It has been a very conscious effort on our part to do it," said Cynthia Beck, executive chef for Dining and Special Events. "I think we have a good balance, and I'm always changing and adding new things."

While Beck said she was not surprised that the university ranked well, "to be No. 1, that's always a surprise."

Many Duke dining officials agreed that the recognition is important, especially since many people tend to be critical of food services.

"I think it's awfully nice to be recognized to be No. 1," said Faye McIntosh, manager of the Oak Room. "We work very hard towards that end, and we are trying to provide what people need."

Duke's recent success stems from its use of student input, said Joe Pietrantonio, associate vice president for auxiliary services. Feedback from a student advisory board helps dining officials better plan its menu according to student demand for less fatty foods, he said.

Student input from the advisory board, as well as criticism from individual

students, resulted in significant menu changes during the past decade. "I've noticed a big change, and I think there is much more of a variety," Brenda Pratt, manager of the Cambridge Inn, said.

When she first began working with the university's food service 16 years ago, the Cambridge Inn was known as "the junk food queen." Now, she said, the eatery offers a large selection of salads, pastas and many other foods.

The Oak Room also has been building on its menu by focusing on low-fat meals prepared from fresh foods, McIntosh said.

She added that the Oak Room prepares new dishes for student employees in order to gain student feedback on menu changes.

While freshman Kevin Marchetti said he was surprised that other universities did not score as well, many other students said they were not shocked by the ranking.

"It's not that surprising. You can find something healthy pretty much anywhere you go [on campus]," said Kristin Sanderson, a sophomore.

Senior Dave Zorub said the ranking was a surprise only in that he thought other universities would have placed better.

"Most of the places you go [on campus] have salads or pasta, or non-meat dishes," Zorub said. He added that the Duke provides a reasonable selection of health foods and pointed to the Trinity Cafe as an example of a successful eatery.

College offers certificate in adventure

College Press Service

SEATTLE—Students must rappel down rocks and backpack in the wilderness to earn a certificate in Seattle Pacific University's new adventure-based education program.

Once certified, the graduates—usually teachers, therapists, counselors and

the adventure-based or "learn-by-doing" technique to teach others.

"What these classes do is teach educators how to effectively use and incorporate experiential 'learn-by-doing' methods along with their current teaching style," said Robert Bavis, who teaches the adventure program.

One school teacher that

Mike Stann, decided to build a climbing wall when he returned to his school. "With the climbing wall I'm able to get students involved in supporting each other, problem-solving and taking initiative," Stann said.

The 20-credit, seven-course program can be completed in one year during evening and weekend classes and field trips.

"Women: The New Factor in Politics?"



Speakers:
Mary Ann Eckles
Nancy Allen

Wednesday,
November 20,
1996
3:00 p.m.
Dining Room C,
JUB

Sponsored by
AFAW

DO NOT ENTER

Great pioneers don't hesitate. MDA research pursues every possible avenue.

MDA Muscular Dystrophy Association

1-800-572-1717

THE ALL NEW
527
MAIN STREET
TUESDAY
REDSTONE
THURSDAY
BODAN

COME BACK AND PARTY WITH THE BAND THAT ROCKED OUR GRAND OPENING

SATURDAY
THE LOUNGE FLOUNDERS
& HOLY CITY ZOO

WED. & FRI.
DANCE PARTY W/ PITZER

\$1.00 MILLER LITE CANS

¢ **50**

WELL DRINKS
EVERYDAY OPEN TILL CLOSE

OPINIONS

Page 4

SIDELINES

Monday, November 18, 1996

In our view

Make evaluations public

Sidelines applauds the administration's decision to rethink the student evaluation system given out at the end of each semester. We would like to see them take their decision one step further and make public those evaluations.

Students will be able to use the information found in the evaluations to help plan schedules and avoid any professors who may not meet their standards.

Students have a stake in their education. Often students get stuck with professors who do not challenge them. Students have a right to make informed decisions about the classes they will take and the professors who they will choose.

Making the evaluations public would encourage teachers to stay on their toes and work towards meeting the goals of students.

For the evaluations to be a useful tool and not just a waste of time for students, they need to be open and accessible to scrutiny by students and other faculty members.

Just as students need to know about the bad professors they also need to know about the good ones. This way students will be able to experience the best of what this university has to offer.

Public evaluations would benefit the students and help MTSU achieve a higher level of teaching excellence.



Nothing wrong with a liberal

To the Editor:

I voted against Bob Dole on Nov. 5. From doing this I feel a certain sense of satisfaction, because I have a great idea coming here — what if the only people who are allowed to vote are the ones who promise on the Holy Bible to vote for Bob Dole?

No. In a few more hours the voice of America will be heard and once again it will be seen that while there are a bunch of people who all think, act, talk and believe alike, the vast majority of Americans still believe that it is acceptable to be different. It's still not against the law to be Buddhist.

Goonetilleke closes with these words: "God bless America." Indeed, perhaps God will bless America, but in the meantime, I have one more vote to cast than He does, and my vote is for Bill Clinton. The narrow-minded, self-righteous and bigoted anti-liberals who couldn't keep their mouths shut for the last few years helped me make up my mind about that. A sincere thank you for your part in motivating me to do my patriotic duty.

To me this sounds ridiculous, but this is election season, and it would seem that the ridiculous is alarmingly popular. I've been listening to WTN 99.7 FM for the last two or three years. I've listened to the conservative Republican talk show hosts blasting every syllable uttered by Bill Clinton. These hosts are so bitter and warped, but I listen to them anyway. Their frustration entertains me, because to me it is appropriate for bitter and warped know-it-alls to be frustrated. And I've listened to their pathetic sheep calling in to regurgitate the rhetoric they've just been listening to as the hosts encourage them like little girls soothing their sick dolls.

"I've heard the name 'liberal' spit out like a sour don't tobacco. And why not? After all, won't liberals believe that it is not a crime punishable by death for a person to have a deviant sexual preference? Don't some liberals believe it is for a woman to make the ultimate decision when considering whether or not she will choose an abortion? Don't some liberals believe that capital punishment usually fails to bring murder victims back from the dead? Don't some liberals actually wish that our great nation would fine something better to do with our money than to build weapons with which to destroy the world? I've even heard it said (although not verified) that some liberals are not the same color, race, gender, nationality or religion as they should be. Some of them, reportedly, don't speak English as their first language.

Come to think of it, maybe it's not enough to say that only Christians should be allowed to vote. Perhaps it should be that only Christian

Letters to the Editor

conservatives who hate liberals should be allowed to vote. — I have a great idea coming here — what if the only people who are allowed to vote are the ones who promise on the Holy Bible to vote for Bob Dole?

No. In a few more hours the voice of America will be heard and once again it will be seen that while there are a bunch of people who all think, act, talk and believe alike, the vast majority of Americans still believe that it is acceptable to be different. It's still not against the law to be Buddhist.

Goonetilleke closes with these words: "God bless America." Indeed, perhaps God will bless America, but in the meantime, I have one more vote to cast than He does, and my vote is for Bill Clinton. The narrow-minded, self-righteous and bigoted anti-liberals who couldn't keep their mouths shut for the last few years helped me make up my mind about that. A sincere thank you for your part in motivating me to do my patriotic duty.

Shannon Russell Holt, Junior
English

Students apathy a disgrace

To the Editor:

On Tuesday, the fifth of November, students and faculty of MTSU and people from around Murfreesboro went to the polls and voted for Bill Clinton. Well, some voted for Bob Dole, and a few voted for Perot. Four hundred and twenty-two in our neighborhood voted for Ralph Nader, but no one bothers to mention his name on the news or radio. But I digress, my point is that few of the people who voted were very well-informed. I saw several students interviewed on Channel 8 seemingly proud of the fact that they knew nothing about any of the candidates they were voting for.

Many people around here made a lot of noise for the election. You would almost think there was a Superbowl going on. The College Democrats stood outside frat gatherings handing out literature which ended up becoming litter, and bulletin boards all over campus were obnoxiously covered with Clinton/Gore flyers (leaving no room for any other flyers). The College Democrats did not, however, bother to come to see "The War Room" in the KUC Theatre the two days before the election. Only six people bought tickets for this documentary on how Clinton was elected four years ago. It showed in detail the strategies used to beat George Bush. I can understand it is a lot of work to sit through an hour and a half film just to make sure you are making the right choices about the country's future. And to come up with the two bucks to see it is very difficult in this country. Perhaps the College Democrats are no better off today than they were four years ago and could not afford the movie. I just have trouble understanding how people who put so much value on freedom they kill people over it are not interested in educating themselves about their own elections. I would think if people were not closed-minded and proud of their ignorance, even Republicans would want to check this film out. But why should they? We have always placed more emphasis on yelling out our opinions than on education. "Speak your mind, don't develop it" is our motto. "The War Room" is not the only film that has had a poor turnout this semester. All foreign films, political films, intellectual/literary films and films having to do with natives of this country have had shamefully poor turnouts.

I was told repeatedly when I became the chair for the Films Committee that

intelligent and artistic films are fine for progressive areas of the country, but would be wasted on the populous of middle Tennessee. I had hoped they were wrong. I wanted the opportunity to prove the stereotypes that this was an area of close-minded, Bible-thumping, illiterate hillbillies was false. I have failed in this attempt. It continually amazes me how content people are to maintain their ignorant preconceptions, their lack of respect and responsibility, and the disdain for anything educational or enlightening. It must be a horrible life to exist in fear of knowledge. It makes Tennessee look quite pathetic when people would rather sit around their dorm rooms and apartments than go to the educational and entertaining events around campus we have been given funds to bring them. The number of people who have said to me this semester they do not want to watch something that makes them think is shocking. These people do not hide their faces in shame after making these statements, but actually seem proud. I guess there is security in numbers, and not wanting to have your awareness raised puts you in the comfortable majority. I just wish the MTSU community would take these opportunities to prove an interest in bettering itself.

John York
MTSU Films Chair

Student ashamed to be an American

To the Editor:

I would like to address the activities that occurred on Election Day '96—the re-electing part. I am disgusted that this country would re-elect Bill Clinton to a second term. I am 21 years old, and my mother raised me to be honest, respectful and faithful to women, and to never do drugs or drink alcohol, among other things. For the past 10 years we have tossed around our country in the past few years like a rag doll. We also teach our children to be faithful to their spouses and to stay away from temptations. We have also taught our kids that "honesty is the best policy," to tell the truth, and to never lie. We have jammed these ideas and morals down our children's throats ever since I was in grammar school.

Then this country turns around and elects a man who has accomplished to break all of these rules and put him in the most powerful position in the world. What is that telling our children? How do we excuse this behavior? I learned about Washington, Lincoln and Roosevelt when I was in grammar school, and I do not want my child learning about how Clinton smoked marijuana and slept around on his wife. What kind of example are we setting for our children in the future?

The people that voted for Clinton are nothing but selfish people who are doing fine economically right now and are not worried about the future of our children. I am tired of hearing the excuse that "every other president does these things." So what, do we keep on allowing this kind of behavior without anybody being held accountable for these things. This is an embarrassment to the United States of America, and hopefully will not be its downfall. I believe that we will be paying for this decision for a long time.

Bryan Ashley
Criminal Justice Major

SIDELINES

P.O. BOX 42, MURFREESBORO, TN 37132
Advertising: 898-2533 • Editor: 898-2337 • Fax: 904-8487

Editorial staff

Editor • Heather Smith

News Editor • Heather Hybarger
Assistant News Editor • Gregg Mayer

Features Editor • Keith Russell
Assistant Features Editor • Tracy Moore

Sports Editor • Lesli Bales

Wire Editor • Jennie Treadway

Photo Editor • Brian G. Miller
Photo Assignment Editor • Shawn Sidwell

Layout: • Lori Haley

Advertising Staff

Advertising Manager • Laura Swanson

Advertising Representatives • Michael Osborne, Justin Boone, Brad Hodge

Production Staff

Production Team • Mandy Coates, Marisa Calvin

Student Publications Director

Jenny Tenpenny Crouch

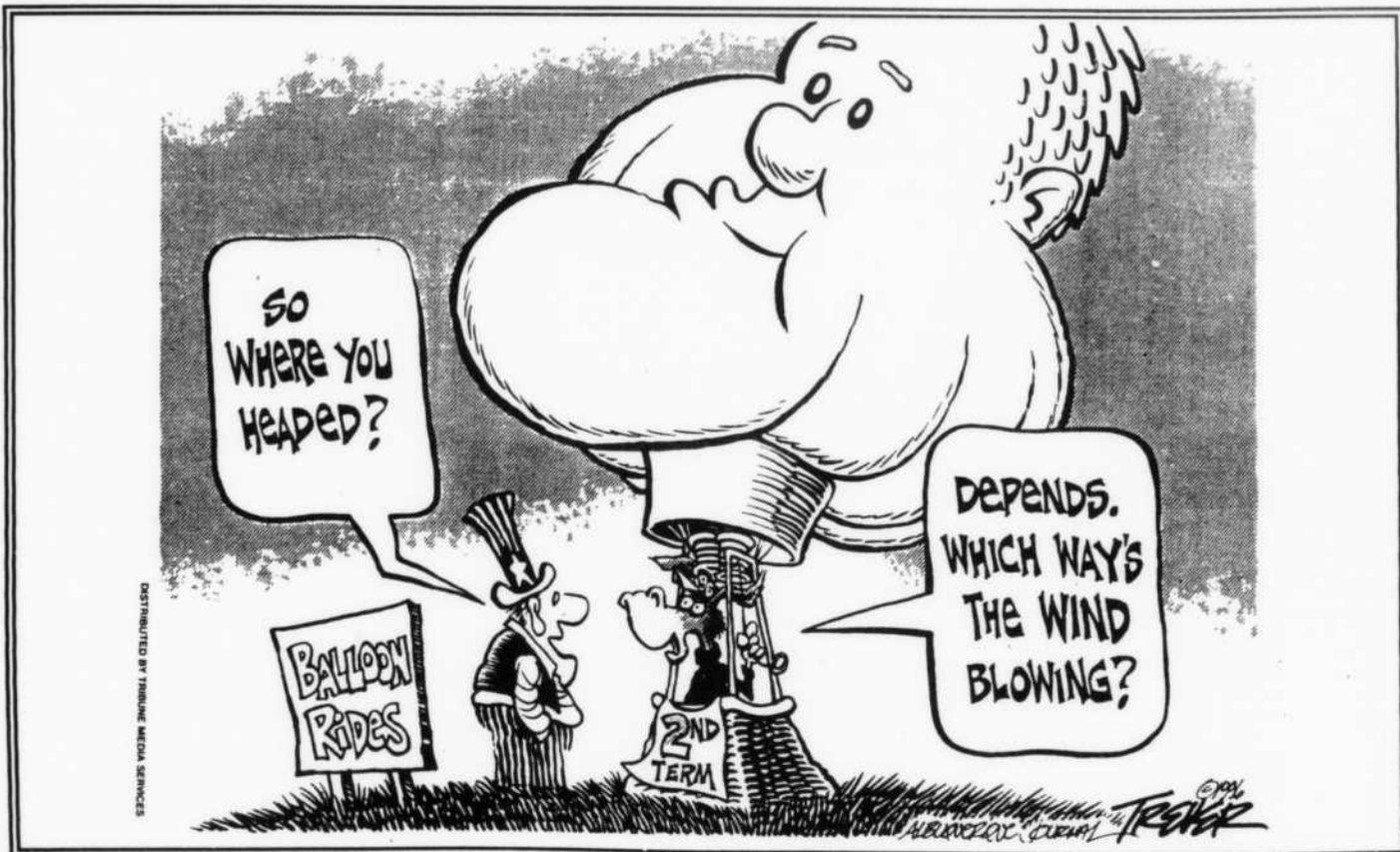
Sidelines is the non-profit editorially independent student newspaper of MTSU and is published every Monday and Thursday. The opinions expressed herein are those of the individual writers and not necessarily those of *Sidelines* or the university.

Letters Policy

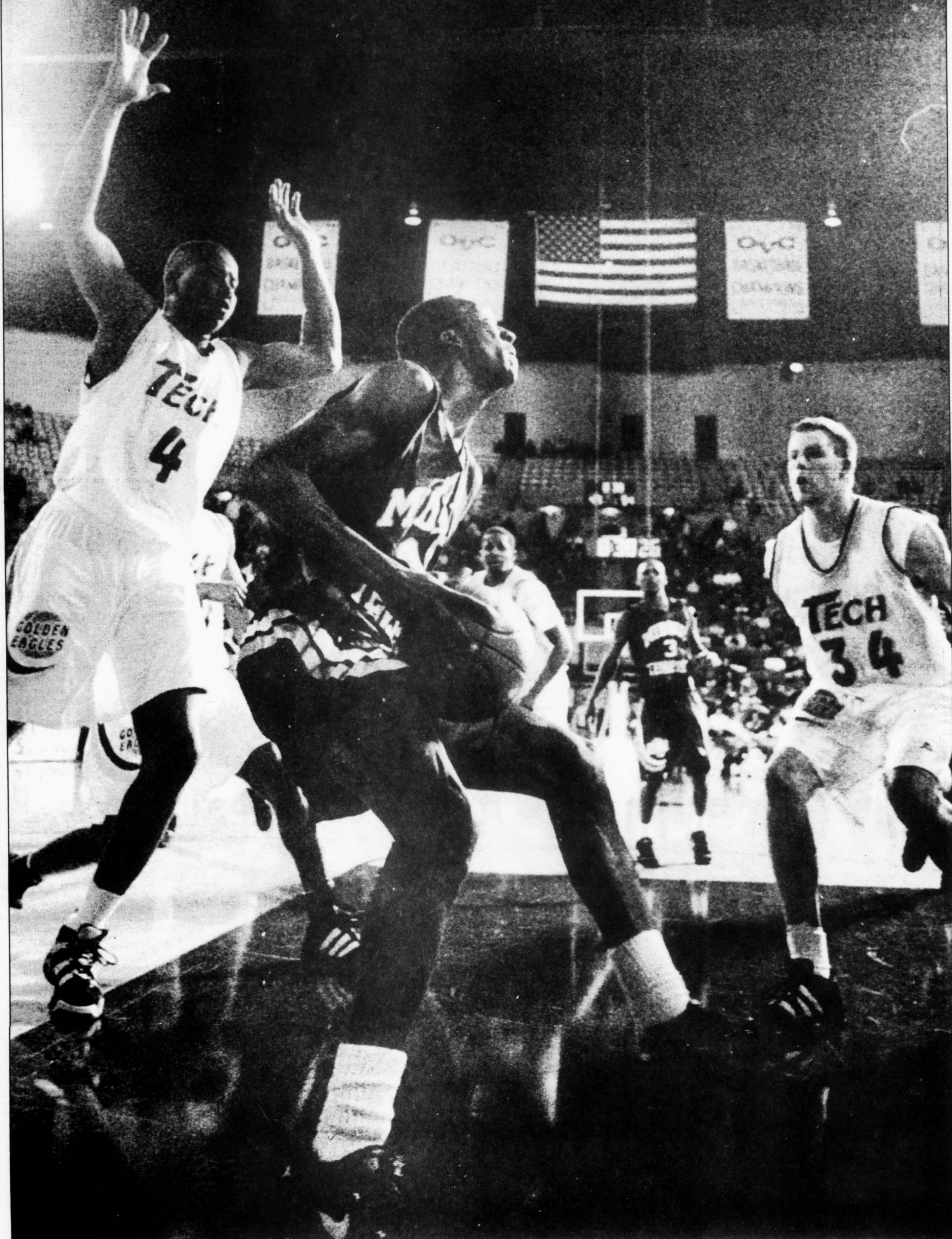
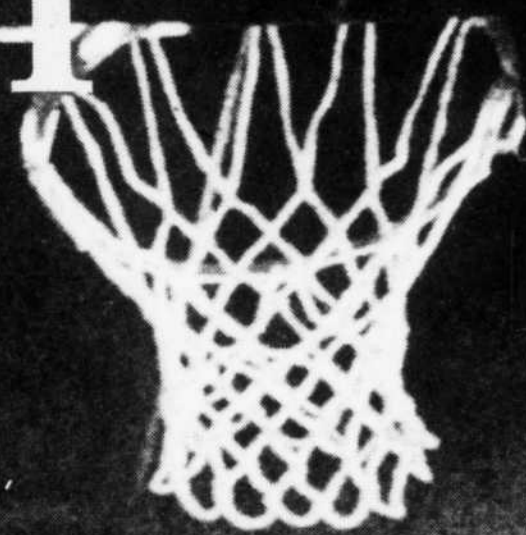
Sidelines encourages comments from readers. Letters to the editor should not exceed 300 words. Authors who want more than 300 words to express themselves should contact the editor. *Sidelines* keeps its pages open to all viewpoints and all members of

the MTSU community. Authors should include their name, address, major, classification and phone number for identification purposes. (Phone numbers will not be published.) *Sidelines* reserves the right to edit for length, grammar, style and libel.

E-Mail letters to Stupubs@frank.mtsu.edu. Send letters to Box 42, MTSU, Murfreesboro, TN 37132 or drop them off at the *Sidelines* office in JUB Room 310.



Basketball Preview



Blue Raider basketball opponents for 1996-97

EASTERN KENTUCKY

Dates vs. MTSU: Jan. 4 and Feb. 3
 Times: 3:15 p.m. and 7:00 p.m.
 Sites: Murphy Center and Richmond, Ken.
 Series record: EKU leads 58-36

ABOUT THE COLONELS

Team colors: Maroon, white
 Head Coach: Mike Calhoun
 1995 record: 13-14 (7-9, 6th place)
 Conference affiliation: OVC
 Starters returning: 3
 Lettermen returning: 6

Players to watch:

F Marty Thomas 6-5, 195
 Jr. 12.7 PPG 3.7 RPG
 G Carlos Bess 6-3, 180
 Sr. 10.6 PPG 4.5 RPG
 F Aaron Cecil 6-6, 215
 Jr. 4.8 PPG 3.4 RPG

MOREHEAD STATE

Dates vs. MTSU: Jan. 6 and Jan. 30
 Times: 6:45 p.m. and 7:00 p.m.
 Sites: Morehead, Ken. and Murph Center
 Series record: MSU leads 49-41

ABOUT THE EAGLES

Team colors: Blue and gold
 Head Coach: Dick Fick
 1995 record: 7-20 (2-14, 9th place)
 Conference affiliation: OVC
 Starters returning: 1
 Lettermen returning: 8

Players to watch:

G Doug Wyciskalla 6-2, 190Sr. 11.0 PPG 2.3 RPG

TENNESSEE STATE

Dates vs. MTSU: Jan. 9 and Feb. 13
 Times: 7:00 p.m. and 7:45 p.m.
 Sites: Murphy Center and Nashville, Tenn.
 Series record: MT leads 25-13

ABOUT THE TIGERS
 Team colors: Royal blue, white
 Head Coach: Frankie Allen
 1995 record: 15-13 (11-5, 2nd)
 Conference affiliation: OVC
 Starters returning: 2
 Lettermen returning: 4

Players to watch:

G Monty Wilson 19.6 PPG 7.0 RPG
 C Jason Johnson 10.9 PPG 6.5 RPG

TENNESSEE TECH

Dates vs. MTSU: Jan. 11 and Feb. 8
 Times: 7:30 p.m. and 7:45 p.m.
 Sites: Murph Center and Cookeville, Tenn.
 Series record: TTU leads 76-54

ABOUT THE GOLDEN EAGLES

Team colors: Purple and gold
 Head Coach: Frank Harrell
 1995 record: 13-15 (7-9, 5th)
 Conference affiliation: OVC
 Starters returning: 3
 Lettermen returning: 8

Players to watch:

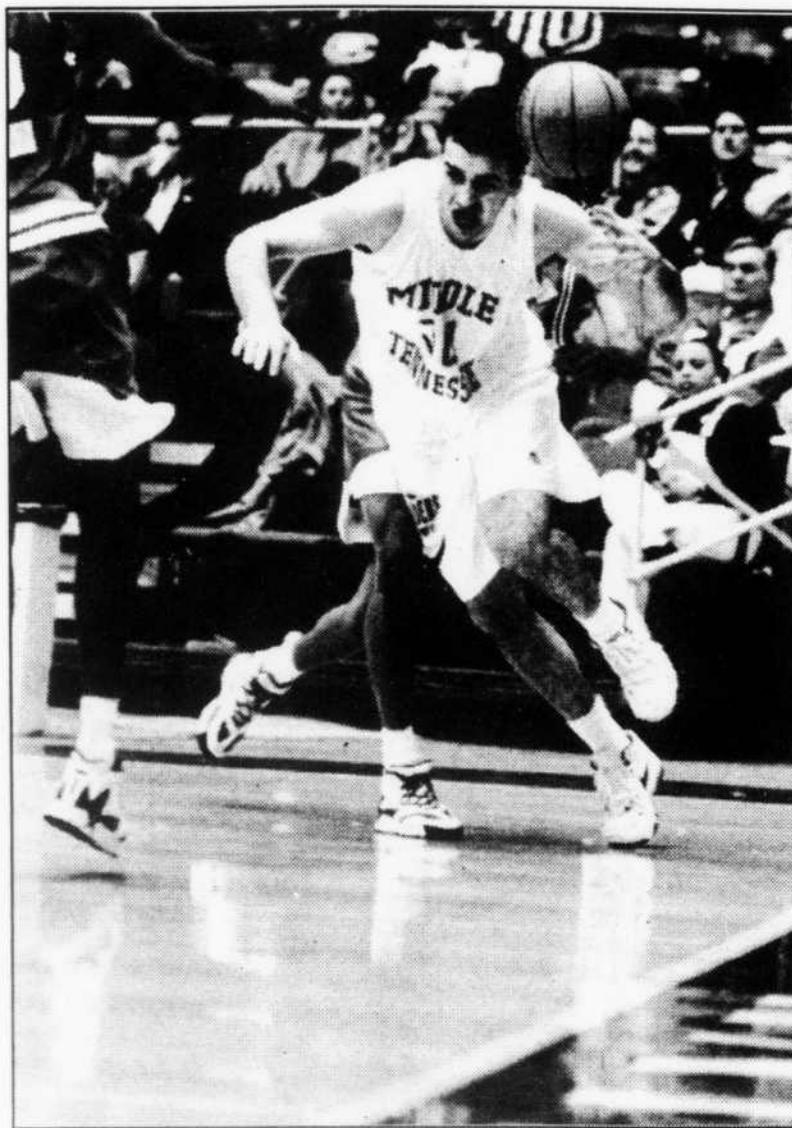
C Lorenzo Coleman 7-1, 290
 Sr. 12.1 PPG 7.4 RPG
 G Chris Turner 8.3 PPG 3.5 RPG
 G-F Jason Embry 6-5, 210Sr. 6.5 PPG 1.5 RPG

SOUTHEAST MISSOURI STATE

Dates vs. MTSU: Jan. 18 and Feb. 17
 Times: 2:00 p.m. and 7:45 p.m.
 Sites: Murph Center and Cape Girardeau, Mo.
 Series record: Tied 5-5

ABOUT THE INDIANS

Team colors: Red and black



Brian G. Miller/staff

Senior forward/center Aylton Tesch drives toward the goal in a game last year. Tesch will redshirt this season.

Head Coach: Ron Shumate
 1995 record: 8-19 (5-11, 8th)
 Conference affiliation: OVC
 Starters returning: 4
 Lettermen returning: 7

Players to watch:

C Bud Eley 6-10, 245 Jr. 17.2 PPG

9.6 RPG
 G Chris Chambers 6-2, 185Jr. 7.9 PPG 2.0 RPG
 G Allen Hatchett 5-10, 190 So. 7.3 PPG 2.2 RPG
 F Reginald Crisp 6-5, 180Sr. 7.0 PPG

3.3 RPG

EASTERN ILLINOIS

Dates vs. MTSU: Jan. 20 and Feb. 15
 Times: 7:00 p.m. and 7:35 p.m.
 Sites: Murph Center and Charleston, Ill.
 First meetings

ABOUT THE PANTHERS

Team colors: Blue and gray
 Head Coach: Rick Samuels
 1995 record: 13-15 (9-9, 6th in Mid-Continent)
 Conference affiliation: OVC
 Starters returning: 2
 Lettermen returning: 5

Players to watch:

F Rick Kaye 6-5, 192
 Jr. 12.1 PPG 3.5 RPG
 F Eric Frankford 6-9, 220
 Jr. 6.2 PPG 4.0 RPG

AUSTIN PEAY

Dates vs. MTSU: Jan. 6 and Feb. 3
 Times: 7:30 p.m. and 7:45 p.m.
 Sites: Murph Center and Clarksville, Tenn.
 Series record: MTSU leads 65-54

ABOUT THE GOVERNORS

Team colors: Red and white
 Head Coach: Dave Loos
 1995 record: 11-11 (10-6, 3rd)
 Conference affiliation: OVC
 Starters returning: 4
 Lettermen returning: 9

Players to watch:

F Bubba Wells 6-5, 225
 Sr. 26.3 PPG 7.3 RPG
 G Joe Sibbett 6-0, 165
 Jr. 10.9 PPG 1.8 RPG
 C-F Reggie Crenshaw 6-7, 215
 Jr. 9.3 PPG 7.0 RPG
 G Colby Pierce 6-2, 170
 Sr. 5.8 PPG 3.7 RPG

UT-MARTIN

Dates vs. MTSU:

Jan. 27 and Feb. 22
 Times: 7:30 p.m. and 7:30 p.m.
 Sites: Martin, Tenn. and Murph Center
 Series record: MTSU leads 14-7

ABOUT THE ROYALHAWKS

Team colors: Sky blue, orange and white
 Head Coach: Cal Luther
 1995 record: 13-14 (9-7, 4th)
 Conference affiliation: OVC
 Starters returning: 3
 Lettermen returning: 11
 Players to watch:

F-G Demarko Wright 6-5, 190 Sr. 10.1 PPG 3.6 RPG
 F-CBJ Nelson 6-5, 235Sr. 7.6 PPG 6.2 RPG
 G Ryan Owens 6-1, 180So. 3.9 PPG 2.4 RPG

NORTH CAROLINA

Date vs. MTSU: Feb. 1
 Time: 3:00 p.m.
 Site: Chapel Hill, NC
 Series record: UNC leads 1-0

ABOUT THE TARHEELS

Team colors: Carolina blue and white
 Head Coach: Dean Smith
 1995 record: 21-11 (10-6, 3rd)
 Conference affiliation: Atlantic Coast
 Starters returning: 3
 Lettermen returning: 8

Players to watch:

F Antawn Jamison 6-8, 216So. 15.1 PPG 9.7 RPG
 C Serge Zwikker 7-2, 265Sr. 9.5 PPG 6.2 RPG
 F Ademola Okulaja 6-8, 225 So. 6.2 PPG 5.2 RPG

Wiel takes reins of Blue Raiders; ready to win

By Doug Malan/staff

Maybe it's a bit premature to replace Danny DeVito with Randy Wiel as the true Renaissance Man. But, considering Wiel's brief head coaching history in Division I basketball, this former North Carolina assistant is primed to make Middle Tennessee State his next basketball reformation project.

Wiel, who was hired last spring to replace David Farrar, spent the last three years at UNC-Asheville, where he led the Bulldogs to a second-place finish in the Big South Conference and won Coach of the Year honors in that conference.

UNCA was in disarray when Wiel arrived in 1993, and the team finished 3-24 his first year. Two years later, the Curacao native moved to Murfreesboro after posting an 18-10 record.

Wiel's optimism and coaching success have influenced the team goals laid out for his first year.

"Our short-range goal would be to win the regular season," the former Tar Heel star said. "In the long-term, we

would strive toward winning the OVC and earning a spot in the NCAA Tournament. But, we really need to just play to the best of our abilities and let the winning and losing take care of itself."

However, immediate success may be difficult to come by, considering only eight scholarship players are currently on the roster. Despite injuries to center Chad Wampler (tibia stress fracture) and guard Kent Ayer (ankle) plus the redshirting of rebounder Aylton Tesch, Wiel will continue to play his brand of pressure basketball.

"We're going to be playing a full-court, pressing-type defense. We're going to try to fast-break as much as possible," Wiel said. "And that depends on if our people are getting worn down because we're not very deep so we can only do that so much. Because we are small, we're going to try to play people 94 feet and not get involved in a half-court situation where the opponents' size would take over."

"I try to coach as much as possible team basketball where everybody gets involved, but of

course, we do like players who can make the big shot," he added. "On defense, I like to take people out of their offense and make them handle the basketball."

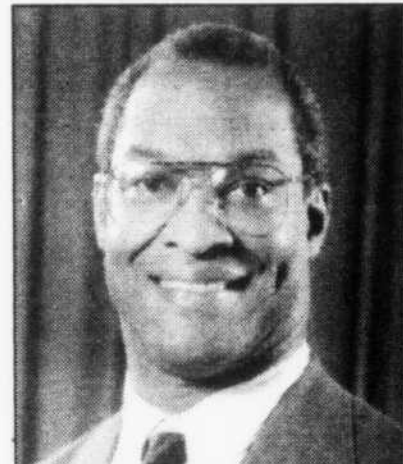
The Blue Raiders will rely on three senior wing players and some talented newcomers to run Wiel's system.

Forward Nod Carter led the team with 15 points per game last year and will share scoring duties with Roni Bailey (10 points, 5 rebounds per game) and Torrey Moore, who redshirted a year ago after a blood clot in his leg was slow to heal.

Sophomore guard Richard Duncan has played the point throughout the pre-season after missing last year at Northeast Mississippi Community College.

Center Mantia Callender, 6-foot-8-inches, 230-pounds, and 6-foot-5-inch guard Malachi Allen were imported from Southern Idaho and Grand Rapids Community College, respectively, and add muscle on the boards.

Freshman Freddie Martinez has been an impressive offensive force early on for MTSU, and Wiel believes the 6-foot-5-inch guard/forward can flourish in his system.



With any sport, the foundation for a team's performance is laid in practice, and Wiel is a firm believer in working his players to their fullest capacity.

"We practice for two and a half hours everyday, and we go hard," Wiel said. "We push our players hard, and I'm tough on them. But as long as they play hard and give me their best, that's all I can ask."

The first real test for Middle Tennessee State, following two exhibition games, will come on Nov. 22, when the Blue Raiders travel to

Fairbanks, Alaska, for the Top of the World Classic opener against the Montana Grizzlies, a team returning two players from a 20-8 team. Possible opponents for later rounds include Providence and Alaska-Fairbanks, who form the rest of MTSU's bracket, along with Baylor, UNC-Wilmington in Alabama, or Southern Illinois in the championship game.

"It's a very strong field, and hopefully we can learn from it and come out with a victory," said the coach. "I would have liked to start a little later, but we have no choice in the matter. Mainly, those games should get us ready for the conference race, which is the most important."

For Wiel and his family, moving to Murfreesboro has been quite easy and over the years, Wiel has gotten used to a change in scenery.

"Tennessee and North Carolina are very similar, so the change hasn't been difficult really. And when you're an athlete, as in my situation, you do a lot of traveling overseas and you adjust to your situation and make the best of it," said the former 1968 Olympic

sprinter and 1967 Pan-Am swimmer.

Off the basketball court, Wiel seems to have made the best of several things. He is an accomplished guitar and trumpet player with an interest in jazz and classical music. He also speaks six languages (English, Dutch, Spanish, French, Portuguese and Papiamentoe—which is native to Curacao) and has an interest in horses.

With assistant coaches Andy Herzer and Jim Ryan following him from Asheville, and former NBA center Rich Yonakor coming from UNC Charlotte, Randy Wiel has several pieces in line for a productive season.

"My first year at Asheville, we didn't have a very good team and it turned around after we got to play athletes that we recruited," he said. "Hopefully, we won't struggle as much here. But we are recruiting, and if we can get the players we would like to get in here automatically, the program will show drastic improvement the next few years."

"And hopefully I will be here for a long, long time."



CONRAD'S
 PRESENTS
KARAOKE NIGHT
 WHERE YOU ARE THE STAR!
 EVERY TUESDAY, WEDNESDAY & THURSDAY NIGHTS
 FROM 9 P.M. UNTIL 12 MIDNIGHT
 HAPPY HOUR: MONDAY - SATURDAY
 5:00 - 8:00 P.M.
 75¢ DRAFT \$2.00 COCKTAILS
 DAILY FOOD FEST
 COMPLEMENTARY HORS D'OEUVRES
 MONDAY - FRIDAY 5:00 - 8:00 P.M.
 Holiday Inn
 HOLIDOME • INDOOR RECREATION CENTER
 "Murfreesboro's Newest Full Service Hotel"
 2227 Old Fort Parkway • Murfreesboro, TN 37129
 (615) 896-2420

BUY ONE-GET ONE FREE
Super Sirloin
Tuesday

BUY ONE SIRLOIN OF YOUR CHOICE AND GET ONE FREE.

Just imagine, a tender, succulent sirloin steak, cooked to your personal taste, served with your choice of potato, salad and all the trimmings. Buy one sirloin and get one of equal or lesser value FREE all day, every Tuesday at



SANTA FE
 A SOUTHWESTERN BAR & GRILL
 CANTINA & CATTLEMEN'S CLUB

127 S.E. Broad Street • Murfreesboro, TN
 890-3030
 Sirloin special not good with any other coupons or discounts.

BROADWAY VIDEO
 1129 N.W. Broad, Murfreesboro

Murfreesboro's Newest and Friendliest VIDEO STORE!!

- Fast, Free, EASY Membership
- 2 DAY/3 EVENING Rentals
- New Releases 2.99 ALWAYS!!
- 24 HR FAST DROP

Call 24hr FREE INFO
 our... HOTLINE!!
221-0618

Broadway Video has the area's LARGEST Selection of Adult Videos for Rent or Sale

THE MEDITERRANEAN RESTAURANT

Announcing our Lunch Re-opening!
 October 1, 1996
 11:00 am - 3:00 pm
 Sunday - Friday
 Lunch Buffet
 Salad & Hot Food Bars
All You Can Eat!
\$4.99
 109 N. Maple
 on the square
895-8658
 Watch for our new dinner menu coming soon!
Servers Needed

Lady Raiders' opponents '96-'97

MURRAY STATE

Date vs. MTSU: Dec. 17/Jan. 25
Time: 7 p.m./1 p.m.
Site: Murfreesboro/Murray, Ky.
Series Record:
MTSU leads 38-11

ABOUT THE LADY RACERS

Team colors: Blue and Gold
Head coach: Eddie Fields
1995 record: 11-17/7-9
Conference affiliation: OVC
Lettermen returning: 9

EAST. KENTUCKY

Date vs. MTSU: Jan. 4/ Feb. 2
Time: 2 p.m./ 2 p.m.
Site: Richmond/ Murfreesboro
Series Record:
MTSU leads 31-8

ABOUT THE LADY COLONELS

Team colors: Maroon, White
Head coach: Larry Joe Inman
1995 record: 11-16/7-9
Conference affiliation: OVC
Lettermen returning: 9

MOREHEAD STATE

Date vs. MTSU: Jan. 6/ Jan. 30
Time: 4:30 p.m./ 7 p.m.
Site: Morehead, Ky./
Murfreesboro
Series Record: MTSU leads 36-6

ABOUT THE LADY EAGLES

Team colors: Blue and Gold
Head coach: Janet Gabriel
1995 record: 11-16/7-9
Conference affiliation: OVC
Lettermen returning: 9

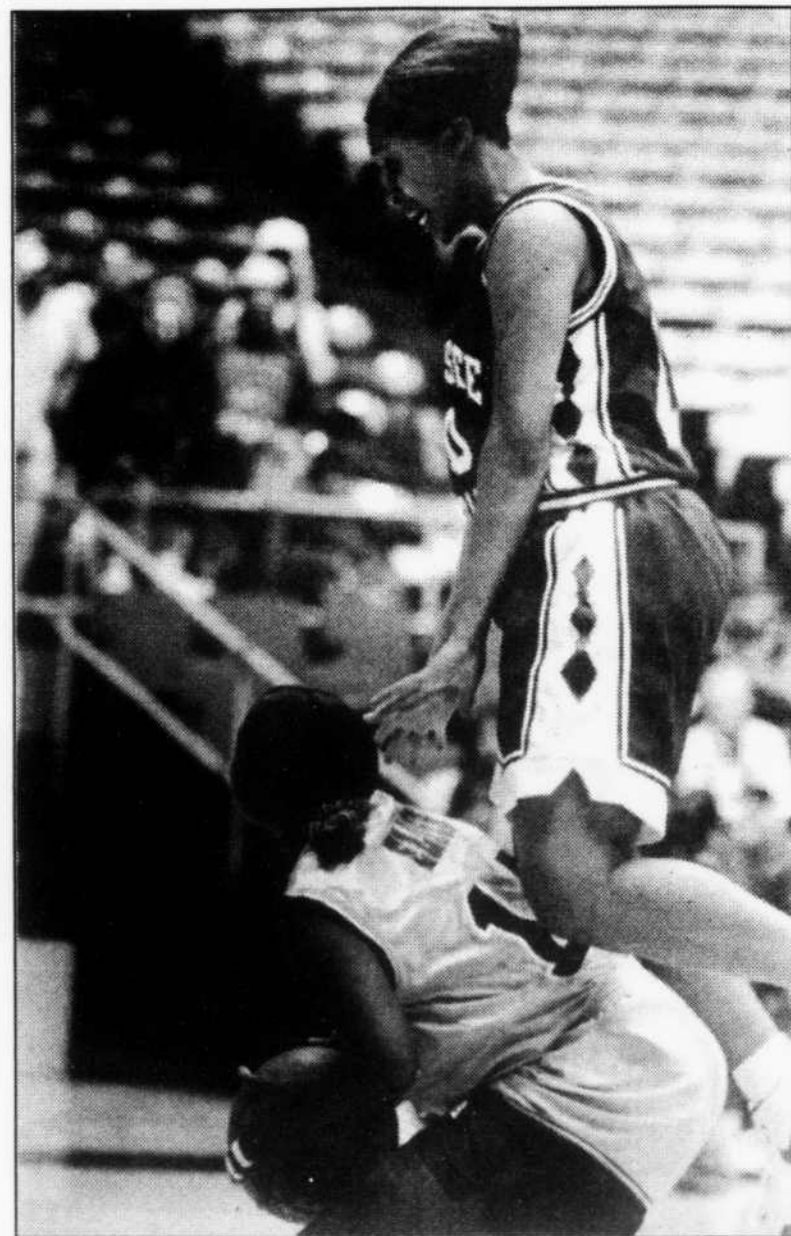
TENNESSEE STATE

Date vs. MTSU: Jan. 8/ Feb. 13
Time: 7 p.m./ 5:45 p.m.
Site: Murfreesboro/ Nashville
Series Record: MTSU leads 22-8

ABOUT THE LADY TIGERS

Team colors: Royal Blue and White
Head coach: Teresa Phillips
1995 record: 7-19/ 5-11
Conference affiliation: OVC

TENNESSEE TECH



Brian G. Miller/ staff

Sophomore guard Carlita Elder gives a ride to a TSU player last year.

Date vs. MTSU: Jan. 11/ Feb. 8
Time: 5 p.m./ 5:45 p.m.
Site: Murfreesboro/ Cookeville
Series Record: Tech leads 31-22

ABOUT THE GOLDEN EAGLETTES

Team colors: Purple and Gold
Head coach: Bill Worrell
1995 record: 11-16/7-9
Conference affiliation: OVC
Lettermen returning: 9

SE MISSOURI

Date vs. MTSU: Jan. 18/ Feb. 17
Time: 4:30 p.m./ 5:30 p.m.
Site: Murfreesboro/
Cape Girardeau
Series Record: MTSU leads 9-2

ABOUT THE OTAHKIANS

Team colors: Red, black, and white
Head coach: Ed Arnen
1995 record: 14-13/9-7
Conference affiliation: OVC
Lettermen returning: 8

EASTERN ILLINOIS

Date vs. MTSU: Jan. 19/ Feb. 15
Time: 2 p.m./ 5:30 p.m.
Site: Murfreesboro/
Charleston, Ill.
Series Record: Eastern Illinois leads 1-0

ABOUT THE PANTHERS

Team colors: Blue and Gray
Head coach: John Klein
1995 record: 12-15/9-9
Conference affiliation: OVC
Lettermen returning: 9

AUSTIN PEAY

Date vs. MTSU: Jan. 23/ Feb. 5
Time: 5:45 p.m./ 7 p.m.
Site: Clarksville/ Murfreesboro
Series Record: MTSU leads 41-2

ABOUT THE LADY GOVS

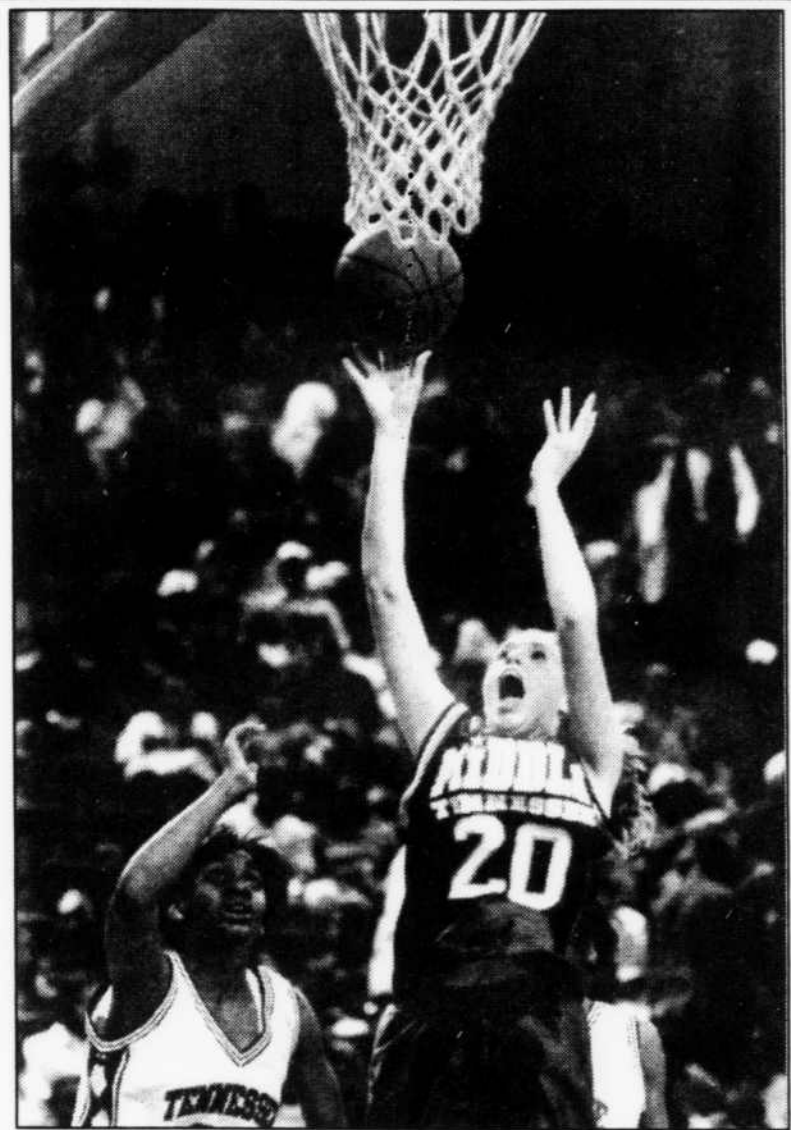
Team colors: Red and White
Head coach: Susie Gardner
1995 record: 21-8/ 13-3
Conference affiliation: OVC
Lettermen returning: 9

UT-MARTIN

Date vs. MTSU: Jan. 27/ Feb. 22
Time: 5:30 p.m./ 5 p.m.
Site: Martin, Tenn./
Murfreesboro
Series Record: MTSU leads 25-0

ABOUT THE SKYHAWKS

Team colors: Royal Blue, Orange, and White
Head coach: Gary Van Atta
1995 record: 9-17/ 5-11
Conference affiliation: OVC
Lettermen returning: 4



Brian G. Miller/ staff

Sophomore center Jonelda Buck goes up for the shot.

Buck on her way to fame

By Sean P. O'Toole/ staff

When walking around the Murphy Center track, one can't help but be awestruck with the banners proclaiming the names of the great Lady Raider players of the past. Names like Sherry Tucker, Kim Webb, Kristi Brown, Heather Prater and others spring to mind. But if you ask the basketball community, Jonelda Buck, the Lady Raiders' super center, will one day be up there. But don't let her accomplishments last year fool you, she still thinks she has a long way to go.

"I have worked on my strength and conditioning a lot, and I have also hit the weights, because I think I am pretty weak physically," says the 6-foot-2-inch sophomore from Jamestown, Tenn.

Despite her obvious humble nature, Buck does have a lot to brag about. She was overwhelmingly voted OVC Freshman of the Year after averaging 14.8 points and 5.6 rebounds a game in her first season as a Lady Raider, in addition to being voted OVC Rookie of the Week three times, hitting 10/10 in a win over UT-Chattanooga, and setting a new school record by connecting on 61 percent of her shots from the floor.

In fact, many felt that she stole a lot of the spotlight off of Heather Prater last year, and may have even taken over the leadership role in her second season, but Buck quickly dispersed that rumor.

"Jessica (Beaty) has become the leader of the team by example, and because she is a senior and all, she has some seniority we don't, and Cortney (Neeley) will also help lead the team some," Buck said.

But even though she had a great freshman campaign, she is still a little concerned about a possible letdown.

"That is always a scary thought deep down somewhere, but I just hope and pray that I can do better than last year."

Aside from her individual achievements, Buck wants a big wish for Christmas this year, a trip back to the OVC Championship, especially after the way the Lady Raiders came up short last year.

"It really hurt losing Jessica (Beaty) in mid-season, and that's probably why we didn't win. I don't really like losing, even though I was hurt less than some of the seniors because I knew that I had three more years to try."

But don't let her play on the court fool you. Off the court she is a gentle person. An elementary education major, she plans to teach and play basketball with her favorite kind of people, children.

"I want to be a teacher pretty bad. I have five nieces and nephews, and I love kids, so that is where my future is."

Whether you are a Lady Raider fan or not, if you hear people constantly talking about Jonelda Buck this spring, don't be surprised.

Men's Schedule			
Date	Opponent	Site	Time
Nov. 22-24	Top of the World Classic	Fairbanks, Alaska	
Nov. 27	Montreal	Murfreesboro	7 p.m.
Nov. 30	@ New Orleans	New Orleans, La	8:05 p.m.
Dec. 2	Murray State	Murfreesboro	7 p.m.
Dec. 7	@ Southern (B.R.)	Baton Rouge, La.	7:30 p.m.
Dec. 14	UT-Chattanooga	Murfreesboro	7 p.m.
Dec. 16	Belmont	Murfreesboro	7 p.m.
Dec. 19	@ Indiana State	Terre Haute, Ind	6:30 p.m.
Dec. 29	Sue Bennett	Murfreesboro	2 p.m.
Jan. 4	@ Eastern Kentucky	Richmond, Ky.	3:15 p.m.
Jan. 6	@ Morehead State	Morehead, Ky.	6:45 p.m.
Jan. 9	Tennessee State	Murfreesboro	7 p.m.
Jan. 1	Tennessee Tech	Murfreesboro	7:30 p.m.
Jan. 18	Southeast Missouri	Murfreesboro	2 p.m.
Jan. 20	Eastern Illinois	Murfreesboro	7 p.m.
Jan. 23	@ Austin Peay	Clarksville, Tenn	7:45 p.m.
Jan. 25	@ Murray State	Murray, Ky.	8 p.m.
Jan. 27	@ UT-Martin	Martin, Tenn.	7:30 p.m.
Jan. 30	Morehead State	Murfreesboro	7 p.m.
Feb. 1	@ North Carolina	Chapel Hill, NC	3 p.m.
Feb. 3	Eastern Kentucky	Murfreesboro	7 p.m.
Feb. 6	Austin Peay	Murfreesboro	7 p.m.
Feb. 8	@ Tennessee Tech	Cookeville, Tenn.	7:45 p.m.
Feb. 13	@ Tennessee State	Nashville, Tenn	7:45 p.m.
Feb. 15	@ Eastern Illinois	Charleston, Ill.	7:35 p.m.
Feb. 17	@ Southeast Missouri	Cape Girardeau, Mo.	7:45 p.m.
Feb. 22	UT-Martin	Murfreesboro	7:30 p.m.
OVC Tournament			
Feb. 25	First Round	TBA	TBA
Feb. 28-Mar. 1	Semis & Finals	Nashville	TBA

Women's Schedule			
Date	Opponent	Site	Time
Nov. 22	@ Ole Miss	Oxford, Miss.	7 p.m.
Nov. 25	Memphis	Murfreesboro	7 p.m.
Dec. 1	Georgia	Murfreesboro	2 p.m.
Dec. 7	@ UT-Chattanooga	Chattanooga	1 p.m.
Dec. 15	@ Southern Illinois	Carbondale, Ill.	2 p.m.
Dec. 17	Murray State	Murfreesboro	7 p.m.
Dec. 20-21, 23	Paradise Classic	Honolulu, Hawaii	
Dec. 20	Missouri		Noon
Dec. 21	West Virginia		10 a.m.
Dec. 23	Hawaii		2 p.m.
Jan. 2	East Tennessee	Murfreesboro	4:30 p.m.
Jan. 4	@ Eastern Kentucky	Richmond, Ky.	2 p.m.
Jan. 6	@ Morehead State	Morehead, Ky.	4:30 p.m.
Jan. 8	Tennessee State	Murfreesboro	7 p.m.
Jan. 11	Tennessee Tech	Murfreesboro	5 p.m.
Jan. 15	@ Furman	Greenville, SC	6 p.m.
Jan. 18	Southeast Missouri	Murfreesboro	4:30 p.m.
Jan. 19	Eastern Illinois	Murfreesboro	2 p.m.
Jan. 23	@ Austin Peay	Clarksville, TN	5:45 p.m.
Jan. 25	@ Murray State	Murray, Ky.	1 p.m.
Jan. 27	@ UT-Martin	Martin, Tenn.	5:30 p.m.
Feb. 1	Morehead State	Murfreesboro	5:30 p.m.
Feb. 2	Eastern Kentucky	Murfreesboro	2 p.m.
Feb. 5	Austin Peay	Murfreesboro	7 p.m.
Feb. 8	@ Tennessee Tech	Cookeville, Tenn.	5:45 p.m.
Feb. 13	@ Tennessee State	Nashville, Tenn.	5:45 p.m.
Feb. 15	@ Eastern Illinois	Charleston, Ill.	4:30 p.m.
Feb. 17	@ Southeast Missouri	Cape Girardeau	5:30 p.m.
Feb. 22	UT-Martin	Murfreesboro	5 p.m.
OVC Tournament			
Feb. 25	First Round	Site of Highest Seed	TBA
Feb. 28	Semis	Nashville, Tenn.	TBA
Mar. 1	Finals	Nashville, Tenn.	TBA

SPECIALTY AUTO, INC.
See Us Today for...
FAST TITLE PAWN and CHECK CASHING

- Up To \$500*
- Low Weekly Payments
- Re-Newable
- Rebate Offered
- We Wait 14 Days Before Depositing
- The Friendliest People In Town!

710 W. COLLEGE ST. 896-6070
November Special
MTSU Student
Discounts on Rates

ANYONE INTERESTED IN A JOURNALISM CAREER NEEDS TO CHECK INTO AN INSTITUTION.

Fellowships in Newswriting & Editing for College Graduates
June 13 - July 25, 1997 • Application deadline: Feb. 15, 1997
Fellowship: \$1,750 - Tuition waived

For an application and more information, contact your career office, journalism/communications or liberal arts department, or The Poynter Institute.

The Poynter Institute
801 Third Street South • St. Petersburg, FL 33701
Phone: (813) 821-9494 x236 • Fax: (813) 821-0583
Web address: <http://www.poynter.org/poynter/nwe97.html>
e-mail: chipsan@poynter.org

CAVING EQUIPMENT • TENTS • EXPERT SERVICE • BICYCLE ACCESSORIES • BICYCLES • CANOES • KAYAKS • BACKPACKS • SLEEPING BAGS • BOOTS • OUTDOOR CLOTHING

WHO SAYS IT'S TOO COLD?

Don't let winter put you on the couch. Visit our new store near Hickory Hollow mall where we've got a great selection of fall and winter outdoor gear to keep you warm out there.

bike pedlar CYCLING
2910 WEST END AVE. / MON-SAT, 10-7
329-BIKE(2453) VANDERBILT AREA

bike pedlar OUTDOORS
5361 MT. VIEW RD. / MON-SAT, 10-7 SUN, 12-5
731-BIKE(2453) HICKORY HOLLOW AREA

TREK UNIVEGA SCHWINN

STOP IN. START YOUR ADVENTURE.

Just in Time for the Holidays

Castner Knott's Grand Opening Celebration

Ribbon-Cutting Ceremony
Wednesday, November 20, 9:00 a.m.

Be one of the first 3000 customers at Stones River Mall and receive a bag filled with coupons, giveaways and prizes including a chance to win a \$1,000 U.S Savings Bond from NationsBank and air fare for two to Orlando, Florida, from Universal Travel Agency.

STONES RIVER MALL

Taking Care of Christmas... Right Down the Street
1720 Old Fort Parkway • Murfreesboro • 896-4486

NationsBank Universal Travel Agency Inc.
Linda Lawrence • Jane Brown
Betty Postell • Debbie Koller

POWER COUNTRY PC 103

Fan groups make Murphy Center fun

By Lesli Bales/ staff

fan n. informal — an enthusiastic devotee or follower.
Murphy Center can hold 11,520 of them but, sadly, it usually doesn't.

However, as basketball season draws near, two specific groups of students are aiming to change all that with what they are hoping will be contagious enthusiasm. These two throngs of devoted followers are known as the Freewilly Gang and the Nod Squad.

Anyone who frequented a MTSU basketball game last year is sure to remember these fans. Faces painted and holding signs, the groups are permanent fixtures in Section C of Murphy Center. The Freewilly Gang stations itself behind the opposing team's bench, while the Nod Squad is firmly entrenched above the southeast scoreboard.

Although the two groups can generate enough noise to

get noticed on their own, both are concerned with the faltering attendance that has plagued M T S U basketball in recent years.

"Back in the early '90s, we used to be called the nastiest crowd in the OVC. Now we're one of the quietest, and this has got to change," says Bryan Kell, MTSU alumnus and Nod Squad member.

"I feel that if it weren't for the Nod Squad and the Freewilly Gang, Murphy Center would be a mausoleum!"

It is with those sentiments that the groups were born. Tracing its roots back nearly seven years, the Nod Squad is

made up of mostly veteran MTSU fans that have seen the teams through highs and lows.

Though many members have since graduated, they still turn out to support the Lady Raiders and Blue Raiders, and members join the group every season.

Last year the Freewilly Gang was created when senior Brandon Burton decided to show his support of MTSU's basketball program. The few quickly multiplied into a rowdy force to be reckoned with. Christened the Freewilly Gang by former men's

basketball coach David Farrar, the group may change its nickname this season, but its outlook remains the same.

"We have a lot of fun, and we keep it clean," says Paul Canady, MTSU senior and Freewilly Gang member.

Instead of being rivals, the two groups feed off each other's energy. Likewise, they share a common goal, as they try to encourage others to show their school pride.

According to both groups, the benefits of attending MTSU basketball games can be threefold. First of all, more fan turnout will help give the MTSU teams a boost.

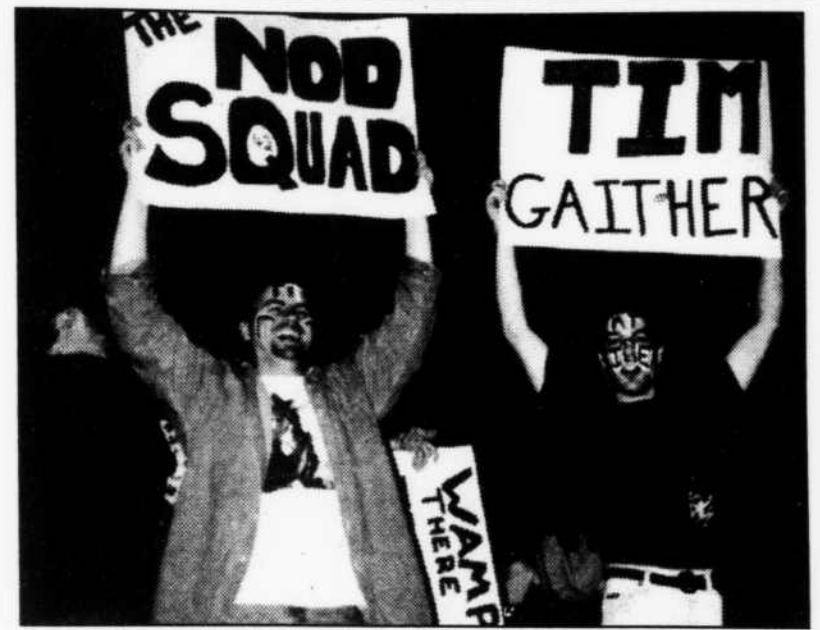
"The team can't get motivated by people just sitting there and watching," Canady says. "You have to go and root them on, let them know you're there."

Secondly, crowd support can personify the home court advantage.

"We have to form an

"I feel that if it weren't for the Nod Squad and the Free Willy Gang, Murphy Center would be a mausoleum!"

-Bryan Kell, MTSU alumnus and Nod Squad member



Lesli Bales/ staff

Scott Link and Phil Baker show their support of MTSU basketball at a game last year.

environment that both supports our team and creates fear in our opponents," Kell says.

And for skeptics, MTSU senior and Nod Squad member Phil Baker has another reason to attend.

"It doesn't matter if the team wins or loses," he says. "What makes or breaks the game is what you put into it."

Neither group is exclusive, and both invite everybody to sit in Section C with them as they try to cheer MTSU on to a successful season.

Carter steps into leadership role for Raiders

By Doug Malan/ staff

Nod Carter knew that he would be called upon this year. After pacing the Blue Raiders in scoring in 1995, the 6-foot-6-inch senior forward expected to be considered one of the team's leaders.

"I think myself along with the other seniors, Roni (Bailey), Torrey (Moore) and Chad (Wampler) have to have some input in our leadership this year," the Murfreesboro native said. "Being one of the starters and also one of the starters coming back, I feel the responsibility to get some of the new guys and returnees back into shape."

"I thought Coach Wiel would demand that leadership from me, and I think I'm up to it."

While starting 26 of the 27 Blue Raider games, Carter averaged 15 points, three rebounds and two assists and was one of the nation's most accurate free-throw shooters at

88 percent for a year ago. finished 15-12 a year ago.

A new coaching staff and some new talent have given the quiet team leader reason to set his sights on greater accomplishments.

"Personally, I want to play well and help the team in any and every way that I can," the former Appalachian State transfer said. "Another goal is to win the conference, and possibly earn a trip to the NAAs."

Because of a lack of depth in the frontcourt, Wiel expects Carter to contribute in other ways.

"Nod's versatility allows us to move him around on the court," the first-year coach said. "He'll play out of position, somewhat, in the power forward slot, and he may even see time at center."

Although he may not match up well with true centers, Carter adds the dimension of three-point shooting. He led the last year's team in three-point shot percentage at 39 percent. And with Wiel's pressure-basketball system, Carter and other versatile players could thrive.

"The players are adjusting to a new coaching staff and new

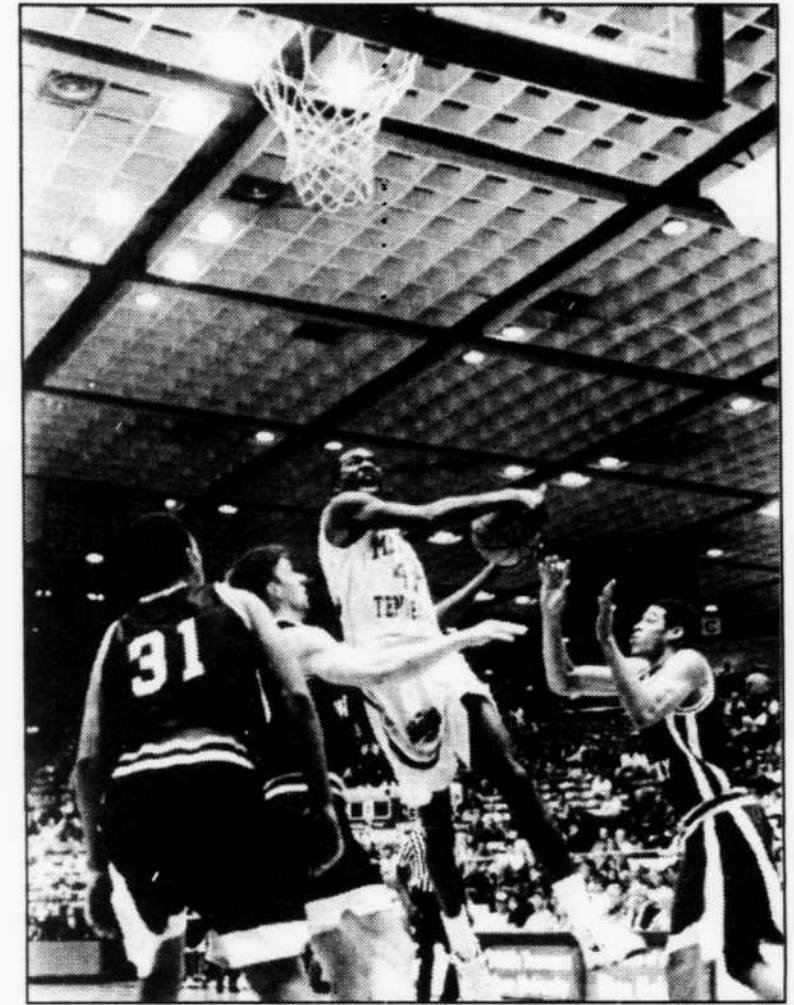
concepts pretty well," Carter said. "It's more interesting because it's a 94-foot game with pressing and trapping, and I think it's going to be a lot of fun this year."

The upbeat style also caters to MTSU basketball fans, and added team success could membership, a Nod Squad club member, a group of MTSU students that prides themselves on painting their bodies and vocally supporting Carter and other Blue Raider players.

"I like the names 'Nod Squad,' and they have names for other guys on the team, like Roni and Chad," Carter said. "I think it's fun. It gets the student body involved and makes us feel good when we come out of our ramp and warm-up and see all of the signs."

In his final year, Carter would like to see something that he and his fellow seniors have yet to experience in their college careers: a filled-to-capacity Murphy Center.

"Hopefully we can get more people out here and fill up the arena," Carter said. "I think we have a chance to pack a lot more people in here this year because of our new style of play."



Brian G. Miller/ staff

Senior forward Nod Carter soars in for a slam last year. Carter hopes to lead the Raiders to a winning season.

TV Schedule	
Women	
Jan. 11 Tech at MTSU	5 p.m. WNAB
Men	
Jan. 11 Tech at MTSU	2:30 p.m. WNAB
Jan. 27 MTSU at UT-Martin	8 p.m. SportsSouth
Feb. 1 MTSU at TSU	7:45 p.m. WNAB
OVC Men's Tournament	
March 1 ESPN	1 p.m.
OVC Women's Tournament	
March 1 SportsSouth	TBA



MANAGER TRAINEE

Norwest Financial, part of the nation's 13th largest bank holding company, is a recognized leader in the financial services industry. Norwest Financial has over 1,100 branches in 48 states, Canada, Central America, Guam and the Caribbean, and has just completed its 20th consecutive year of record earnings.

We are looking for professional individuals seeking a career in the financial service industry. This is an entry level position which will lead to branch management. Our managers run their own operations, hire and train their own people, make their own decisions, develop their own business and sales prospects, and more importantly, are rewarded on the basis of individual management performance. Ideal candidates will:

- be results-oriented with a strong sales aptitude;
- possess a B.S. degree;
- have excellent leadership and people skills;
- be willing to relocate in the near future;
- have a strong desire to progress according to their own performance.

If you qualify, you'll receive a competitive starting salary, regular salary reviews and a complete benefit package. Come join a leader!

Send your resume to:

Norwest Financial, Inc.
Nashville District Area
1008 Glastonbury Drive
Franklin, TN 37069
FAX 615-333-5715

Equal Opportunity Employer

NEED AN ELECTIVE???

TRY SOMETHING OUT OF THIS WORLD
AERO 450 SPACE

OR FOR SOMETHING A LITTLE CLOSER TO EARTH

**AERO IN OUR LIVES
AERO 330**
A NON-MAJOR ELECTIVE

THRONEBERRY PROPERTIES	
8 LOCATIONS OPEN DAILY	
Gateway 1841 New Lascassas Ph. 848-0023	Studio 1, 2 & 3 bedrooms NEW
Oak Park 1211 Hazelwood Ph. 896-4470	Natural landscaping, large garden style & townhouse apts. 1 & 2 B.R. W/D hookups, appliances. Pool & tennis.
Birchwood 1535 Lascassas Ph. 893-4470	Curtains, ceiling fan, outside storage and all appliances furnished. 1 & 2 bedrooms available.
Windrush 1735 Lascassas Ph. 893-0052	Country setting. Low electric bills. Studio, 1, 2 & 3 bedrooms. Pool and laundry room.
Pine Park 210 Hazelwood Ph. 896-0667	Dishwasher, stove, refrigerator, & garbage disposal. Large kitchen. 1 & 2 B.R. Pool & laundry room.
Park IV Ph. 896-0667	Washer-dryer connections. 1 & 2 bedroom apartments.
Holly Park 2426 E. Main Ph. 896-0667	1 & 2 bedroom apt.'s & townhouses.
Rosewood 1606 W. Tenn. Ph. 890-370	1, 2 & 3 B.R. exercise room, pool & tennis. Ceiling fans, W/D hookups, appliances & drapes furnished. Near VA hospital

MUSIC CITY		
Mon, Tue, & Wed ONLY		
2 for the price of one w/ this ad!	2 for the price of one w/ this ad!	2 for the price of one w/ this ad!
MONDAY RETRO NITE BIG 80'S DANCE PARTY FREE PARKING 18 & OVER ADMITTED Cover \$5.00	TUESDAY Budweiser FIGHT NIGHT AMATEUR BOXING ZOO DANCE PARTY \$3.00 Ladies All Night \$2.00 Parking 18 & OVER ADMITTED 21 & OVER \$5 18 - 20 \$7	WEDNESDAY COLLEGE NIGHT LONGNECK LOLLAPALLOZA \$.75 Longneck 8 pm - 11 pm BATTLE OF THE BABES WET T-SHIRT CONTEST \$2.00 PARKING 18 & OVER ADMITTED \$3 Cover All Night Men Under 21 \$5

LAURA ASHLEY • GUESS

AutoFlex by Marchon Eyewear

ACCU-VISION OPTICAL
"Murfreesboro's Largest One Hour Optical Store"

1720 OLD FORT PKWY. STONES RIVER MALL 893-1555
1720 W. NORTHFIELD GEORGETOWN SQUARE 896-0082

Dr. Serge Martin • Dr. Cindy Jones • Dr. Robert Scarborough

FREE Eye Glasses! **SHARE A PAIR!**

Buy One Complete Set of Eyeglasses at the Regular Price
Get A Second "Pair to Share" **FREE!**

You may give your extra eyeglasses to your friends or family.
Don't miss the great opportunity!
*From selected merchandise. Some restrictions apply.

RALPH LAUREN • TOMMY HILFINGER • CALVIN KLEIN • EVAN PICONE

POLO • GEOFFREY BEENE • AUTOFLEX

PLANETS

HEMP ITEMS! LOCAL CRAFTS
JEWELRY MON-SAT 11-8
STICKERS T-SHIRTS
TOBACCO ACC. POSTERS
DETOXIFY AVAIL

111 W LYLE ST. MURFREESBORO, TN 37139-1977

FEATURES

Monday, November 18, 1996

SIDELINES

Page 9

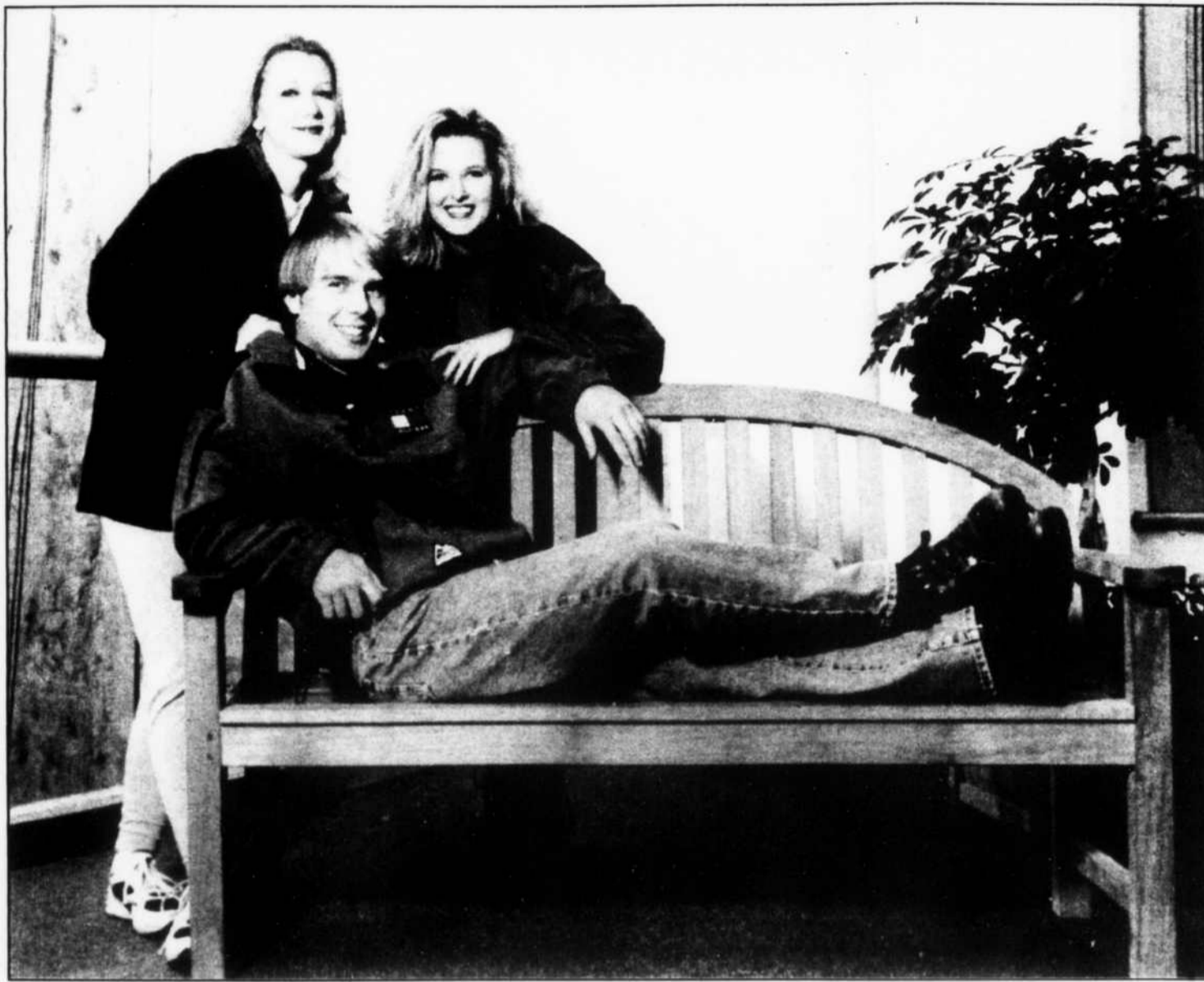


photo provided

MTSU students Leslea Cronin, Franklin Frye, and Kelly Rowland model Tommy Hilfiger fashions from Castner Knott Company. The student produced 'Fashion Avenue' show will take place Thursday night in the JUB.

'Fashion Avenue' comes to MTSU

By Tracy Moore/ staff

The MTSU fashion promotion class presents "Fashion Avenue," a fashion show held on Thursday, Nov. 21, at 7 p.m. in the Tennessee Room of the James Union Building to celebrate the grand opening of the Murfreesboro Castner Knott store.

"Fashion Avenue" is produced entirely by MTSU students to fulfill requirements for the textiles, merchandising and design curriculum. Students are responsible for all aspects of the fashion show, including staging, lighting, wardrobing, modeling, publicity, programs, merchandise coordination, choreography and music.

"It is an excellent hands-on learning experience for the students," says Nancy Kelley, coordinator of the show and textiles, merchandising and design assistant professor. "Students develop a realistic understanding of planned promotional campaigns."

The fashion show has also received help from several local businesses. Castner Knott will provide all clothing, accessories and hair styling. Target Stores donated supplies for set and construction. Cromer Printing provided tickets, fliers and programs. Sam's Wholesale

Club donated props for the show, and music for "Fashion Avenue" was provided by Blockbuster Music.

In addition to a special guest appearance by Miss Tennessee Towanna Stone, an MTSU graduate, over \$2,000 in door prizes will be given away by Castner Knott. Prizes include and outfit by Tommy Hilfiger for Women worth \$200, one month's rent up to \$300, books for a semester valued at \$250, and a meal plan worth \$250.

MTSU is the only public university in Tennessee to offer a bachelor of science degree in textiles, merchandising and design with an emphasis in either fashion merchandising or apparel design. The degree prepares graduates for future careers in buying, fashion coordination, entrepreneurship, merchandising, design and pattern making. There are currently 110 students enrolled in the program.

All proceeds of the show will benefit the Domestic Violence Program in Rutherford and Cannon Counties. Tickets cost \$3 and may be purchased at the Human Sciences Department's main office or at the door the night of the show. For more information, call Nancy Kelley at 898-5689 or 898-2884. •

MTSU RIM graduate jingling his way to commercial success

By Pam Courtney / staff

The name Randy Wachtler may not be familiar to you, but you probably are familiar with the theme music he has created for television shows and commercials during the past dozen years.

Sandwiched in the middle of Music Row, Wachtler's 615 Music Productions is rated as one of the top three jingle and original theme music companies in the United States. Its list of clients includes 85 TV stations throughout the country—including WKRN Channel 2 in Nashville—as well as an assortment of cable networks, such as A&E.

In fact, Wachtler, a 1982 MTSU graduate, recently won a national Emmy for original theme music for A&E's "Biography" program, beating out strong contenders "Dateline NBC" and "National Geographic" for the award.

"We are responsible for 80 percent of the music on A&E network, which includes 'Biography,' 'Voyages,' 'Ancient History' and a lot of promos," said Wachtler of the work that won him the award. "I was very proud to win it for Nashville, for all of our great musicians and for my co-writer."

In addition to the Emmy, mounted on the walls of 615 Music Productions

are other industry accomplishments, including a Clio award (the advertising industry's highest honor) for work on a Domino's Pizza theme.

Indeed, now in its 12th year of operations, 615 is starting to get the respect it deserves. The company has also created original themes for the Los Angeles Lakers, California Angels and Chicago Bulls, and themes for "Frasier" and "Grace Under Fire" are also in the company's portfolio.

"Clients always want something different," Wachtler says of the business. "One of the toughest parts of this business is to come up with something that is new and unique. The way we keep on the edge is that we pull from an ever-growing pool of talented musicians, composers and sound designers."

Musicians used by 615 have included younger acts, such as Take Six — who Wachtler used in the Domino's Pizza campaign — to even more legendary performers.

"We just finished a new 'Jenny Jones Show' launch campaign for this year with Little Richard singing his 1957 hit 'Oh Jenny Jenny,'" Wachtler revealed. "We recorded tracks in Nashville and then flew to L.A. to record Little Richard."

Most of the time, however, Wachtler likes to make use of the Music City's pool of talented



musicians. "I have made it my personal mission to let the rest of the country know what is available here in Nashville," he said, sitting, relaxed, in his barnboard-decorated office. "Nashville is still underrated as far as music production."

"It's better here," he continued. "Pound for pound, I think our musicians are the best in the world. I take a lot of pride in bringing a lot of network people to Nashville."

Wachtler, 39, has been enamored with music since he was young. He

began playing drums at the age of 12, and played in bands for four years before enrolling at the University of South Florida to study music. Eventually, he found his way to MTSU.

"I was really tired of playing in smoke-filled bars, and transferred up to MTSU's RIM program," Wachtler remembered. "I thought that was the greatest thing since sliced bread; to actually find a college having an accredited music production curriculum."

After serving internships with NARAS and MCA as an undergraduate, Wachtler was hired by the now-defunct American Image Productions company. It was there that he gained experience doing music for commercials to air on television and radio. It was also where he developed a wonderful idea.

"I didn't know any better, and I thought Nashville needed a jingle production company," he recalled of the initial brainstorm. With a business plan and high hopes, Wachtler walked into an area First American Bank and asked for a loan.

"They looked at me like I was a little crazy," he remembered.

"And then they funded half the loan."

From there, it was up to Wachtler. While admitting that he "practically

starved" during the first three years, 615 Music Productions is now rising to the top. The company's projected 1996 earnings are expected to approach \$1.8 million, and there are plans to move into an expanded facility complete with three digital editing suites, four programming composing rooms, a mix-to-picture sound design suite and a full 24-track studio.

And there will be plenty of work to keep Wachtler and his employees occupied in their new digs. Current projects include a new theme for CBS Sports' Winter Olympics telecasts, and the development of a music library division to allow his customers an inexpensive way to get original music. The company is even spreading out into international markets, with deals set for an NBC network and History Channel UK launches.

The experience has shown Wachtler what it takes to succeed in the business, which he is more than willing to pass on to aspiring students.

"Find out what your strength and weaknesses are, and realize that you may change your course a little," he advises. "Mentally forge a plan, even if you vary off of it in six months. To start your own business, you must have a real entrepreneurial spirit. Music is my first love, so this business is ideal." •

Helping the hungry RAP canned food drive helps needy

By Mary Frances Herrington/staff

The Raider Assistance Program has embarked on yet another community service project to boost the spirits of others during the holiday season.

Last week the program members held a canned food drive to give to the Rutherford County Food Bank. The food drive ended Friday as the members began to build a castle out of the 6,000 or so cans received while Student Programming RAP president Jacey Smith Davenport, the graduate assistant for the program says, "The whole purpose of the program is to serve as a liaison between MTSU and the agencies who benefit the community and to help people who are less fortunate than we are." •



Dan Ritchie/ staff

RAP president Jacey Smith

Davenport, the graduate assistant for the

program says, "The whole purpose of the program is to serve as a liaison between MTSU and the agencies who benefit the community and to help people who are less fortunate than we are." •

Non-perishable sculpture



Dan Ritchie/ staff

RAP volunteers Jacey Smith and Joey Davenport constructed a canned edifice late Friday afternoon in front of KUC. The cans were collected were to be donated to the Rutherford County Food Bank.

Detours

The Loony Bin

Legal age to visit salad bar: 10

WILMINGTON, N.C. (AP) — The minimum age to drive is 16; to vote, 18; and to buy alcohol, 21.

Now, New Hanover County wants to set a minimum age for visiting a salad bar. It wants children younger than 10 to be accompanied by an adult.

The reason is the unappetizing things kids can do when they get their hands on food.

"You go into a restaurant with a salad bar and you see little ones on their tippy toes trying to see and they take a spoon, taste it and put the spoon back in," said health board member John Coble.

The county's board of health unanimously voted this week to ask the state Commission for Health Services to require restaurants to ban children from food bar lines if they are unaccompanied.

Police chief arrests mayor, police department

PALMER, Tenn. (AP) — The police chief arrested the mayor, who made bail and then suspended the entire police department — the chief and one patrolman.

Mayor Kenley Campbell and the recently elected aldermen — L.H. Keener, Patricia S. Kilgore, Billy C. Morrison and Joy Shrum — were scheduled to hold their first meeting Tuesday in this eastern Tennessee town.

But as Campbell approached city hall, he was arrested by Police Chief Brent Myers, charged with misconduct and resisting arrest. Myers was mad because he heard the mayor and the aldermen planned to fire him, Campbell said.

The mayor was carted off to jail. He quickly made bond and returned to the meeting where the board suspended the police department.

Campbell said he had not planned to fire the chief, who has been in office about a year, but after what happened, the council decided some action was necessary.

Until the situation is resolved, the Grundy County sheriff's department is providing law enforcement in this town about 40 miles northwest of Chattanooga.

Edible sculptures benefit homeless

NEW YORK (AP) — Sculptures in a contest to benefit the homeless were made from materials that could feed them.

Thursday night's fourth annual "Canstruction" competition asked leading design firms to sculpt from cans, boxes and bottles of food, which will be donated to the Food For Survival — an umbrella group that will get 50,000 meals from the friendly competition.

Among the entries: a boat made of tuna cans on a sea of Jell-O boxes; a five-car train — made of canned milk, boxes of animal crackers and cartons of orange juice — climbing a mountain of canned green beans; and a 7-foot replica of an Absolut vodka bottle made of tuna cans.

The winner was a 7-foot beggar's cup built from various cans of beans and vegetables that housed a taped message that most New Yorkers hear daily: "Can you spare some change?" It was created by HLW International LLP., an international architecture firm.

Local Events Calendar

The Boro- 895-4800

Wednesday, November 20: The Nationals-10:30 p.m.
Thursday, November 21: Writers on the Mic Night-10:30 p.m.
Friday, November 22: The Bloody Lovelies-10:30 p.m.
Saturday, November 23: Aggy Colored Karma-10:30 p.m.
Sunday, November 24: Roland Gresham Jazz-7 p.m.

The Bunganut Pig- 893-7860

Monday, November 18: Jazz with Bill Fanning-8 p.m.
Tuesday, November 19: Lisa- 8p.m.
Wednesday, November 20: The Warren Brothers-8 p.m.
Thursday, November 21: Crosstown Traffic-8 p.m.
Friday, November 22: Miranda Louise-9 p.m.
Saturday, November 23: Kenny Kramer and the Smooz Kings-9 p.m.

Main Street-890-7802

Saturday, November 23: The Lounge Flounders with Holy City Zoo-9 p.m.

MTSU Theater

Tuesday, November 19: MTSU Theater presents William Inge's "Come Back Little Sheba." The play begins at 8 p.m. and will run through Saturday, November 23. General admission is \$5, cost for MTSU employees is \$2.50. For more information, call 898-2103.

The Nashville Symphony

Friday, November 22: The New York Philharmonic principal percussionist Christopher Lamb will play a percussion concerto by Pulitzer-Prize winning composer Joseph Schwantner. Preceding each concert are Classical Conversations, free concert previews for ticket holders at 7 p.m. in Jackson Hall. The show begins at 8 p.m. at TPAC. For more information, call 255-9600.

Today's Lists

TV

1. "ER," NBC
2. "Seinfeld," NBC
3. "Suddenly Susan," NBC
4. "Friends," NBC
5. "NBC Sunday Night Movie: Pandora's Clock, Pt 1," NBC
5. (tie) "Single Guy," NBC

SINGLES

1. "No Diggity," Blackstreet featuring Dr. Dre (Interscope)
2. "It's All Coming Back to Me Now," Celine Dion (550 Music) (Platinum)
3. "Un-Break My Heart," Toni Braxton (LaFace)
4. "Macarena (Bayside Boys Mix)," Los Del Rio (RCA) (Platinum)
5. "I Love You Always Forever," Donna Lewis (Atlantic)

Guys and Dolls



Dan Ritchie/staff

Jeremy Bethea (left) plays Benny Southstreet and Matt Woodside (right) is Nicely-Nicely Johnson in the Wesley Players presentation of 'Guys and Dolls' at the Wesley Foundation Friday night.

'Larry Sanders Show' takes home 10 Aces

Associated Press

LOS ANGELES (AP) — Garry Shandling's talk show spoof "The Larry Sanders Show" led winners in Saturday's CableACE Awards, taking trophies for best comedy, acting, directing and writing. Home Box Office, which airs "Larry Sanders," also was the most-honored cable network with 28 awards, followed by A&E and ESPN with six each.

Showtime's movie "Truman" starring Gary Sinise and HBO's "Tracey Takes On..." comedy series starring Tracey Ullman each took three awards.

Among the winners of special awards in the 18th annual ceremony were Lifetime for its special "Lifetime Applauds: The Fight Against Breast Cancer," Nickelodeon for its leadership in children's programming.

The winners of the 1996

CableACE awards included:
COMEDY SERIES: "The Larry Sanders Show," HBO.
DRAMATIC SERIES: "The Outer Limits," Showtime.
MOVIE OR MINISERIES: "Truman," HBO.
TALK SHOW SERIES: "Politically Incorrect with Bill Maher," Comedy Central.
ACTOR, COMEDY SERIES: Shandling, "The Larry Sanders Show," HBO.
DIRECTING A MUSIC SPECIAL OR SERIES: Chuck Vinson, "Sinbad's Summer Jam: 70's Soul Music Festival," HBO.
ACTOR, MOVIE OR MINISERIES: Gary Sinise, "Truman," HBO. GOLDEN CABLEACE AWARD: "Lifetime Applauds: The Fight Against Breast Cancer," Lifetime.
DIRECTING, MOVIE OR MINISERIES: Robert Markowitz, "The Tuskegee Airmen," HBO.

How to spend your college years.

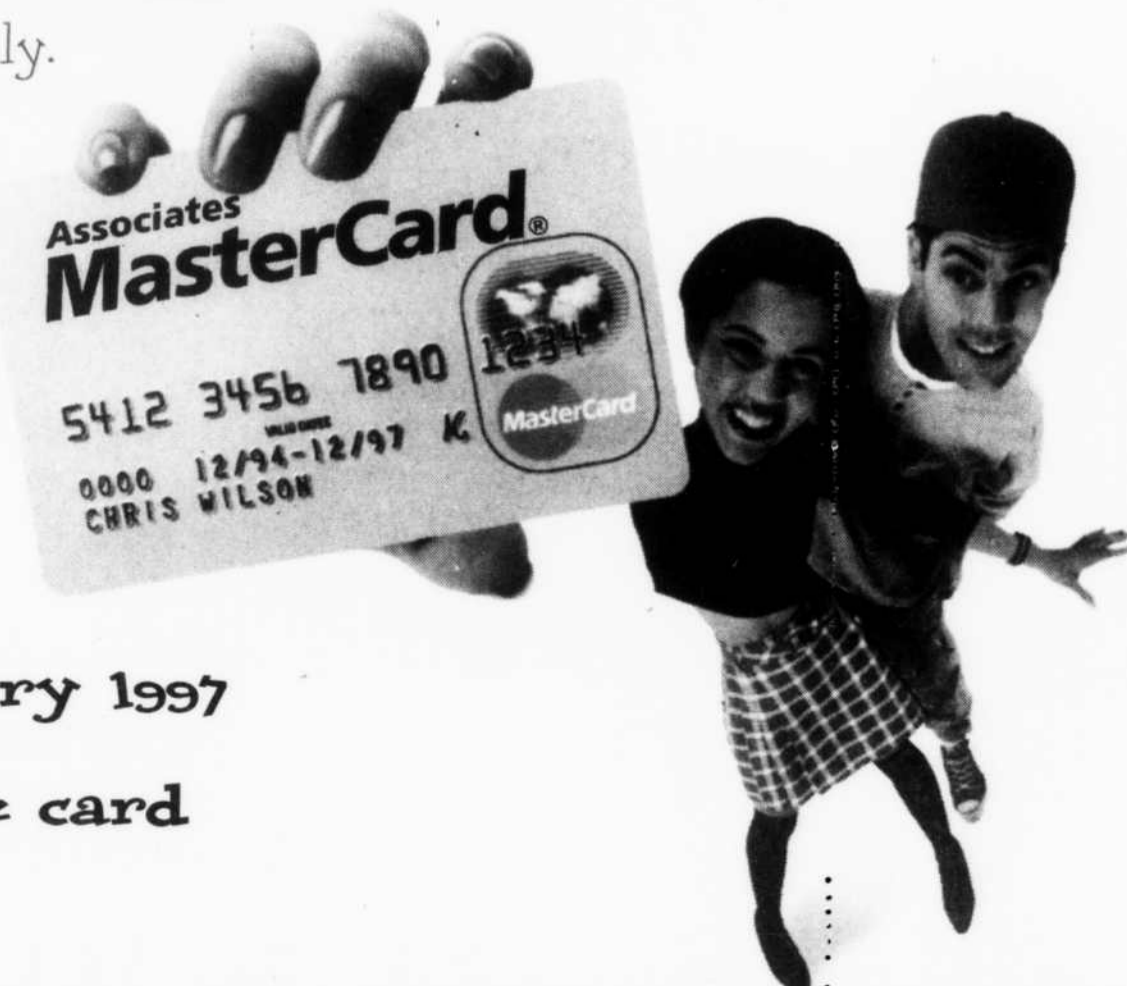
You should spend your college years wisely.

Study hard, have fun, and carry an

Associates MasterCard® Card.

You can get:

- no annual fee
- up to 3% cash back
- no ATM fees until January 1997
- a 30-minute prepaid phone card
- a credit line up to \$2,500



To apply, just call toll free 1-888-SEND-ONE.

Associates National Bank (Delaware)

SPORTS & RECREATION

Monday, November 18, 1996

SIDELINES

Page 11

Blue Raiders pull out major victory over EIU

By Doug Malan/ staff

On a nearly-perfect November afternoon, with the sun riding low in the western sky, the Blue Raiders displayed an impressive offensive and defensive arsenal that conquered number-14 Eastern Illinois 31-24 and pacified the Panthers' cries for a playoff berth.

In their first win against a team with a winning record and first meeting against Eastern Illinois, Middle Tennessee State forced six turnovers, and quarterback Ronnie Gordon played his best game of the year, lifting MTSU's record to 5-5. Wide receiver Dee Mostiller also became only the eighth OVC receiver to surpass the 2,000-yard mark in career receiving yardage.

"This win couldn't have come at a better time," said head coach Boots Donnelly. "We needed to beat a ranked team to show people that we can win against good competition. And Eastern Illinois is a very good team."

The Blue Raiders racked up 359 yards of offense against the conference top defensive unit, and the MTSU defense squelched the Panthers' rushing attack, which had averaged 244 yards per game.

"Our defense really played big today," Boots said. "I was surprised that we handled their running game as well as we did."

EIU finished with 170 yards rushing on the day, but they had only 41 at halftime.

MTSU broke a scoreless game in the first quarter, when tailback Kelerick Green, whose 93 yards rushing ended his streak of three consecutive 100-yard performances, dashed in from five yards out to give the Raiders a 7-0 lead. The scoring drive followed an interception by cornerback Typail McMullen on EIU quarterback Mike Simpson's first pass of the game.

For Green, the touchdown was his seventh of the year, a team-high achieved in only four games.

Following a Panther field goal in the second quarter, Gordon, who finished 10-24 for 230 yards and three touchdowns, hit wide-open tight end Gary Davis from four yards out on a play-action pass that baffled the EIU defense.

A 49-yard Keegan Ray field goal, with just under nine minutes to play in the first half, gave the Blue Raiders a 17-3 lead that they took to the locker room.

Eastern Illinois awakened in the second half and began threatening the Blue Raider lead with a fourth-and-goal, three-yard touchdown run by Simpson mid-way through the third quarter. The lead was cut to 17-10, but as they did throughout this windy and chilly afternoon, Middle Tennessee State quickly responded.

"Overall, we didn't do anything in the second half offensively," said Donnelly. "But every time we needed something big to happen, it happened."

Following the Simpson score, Gordon looked for Mostiller on a third-and-19 play, and the two connected after Panther strong safety Chris Watson gambled for an interception and came up empty. Mostiller caught the pass and, with Watson on the ground as the last line of defense, Dee danced into the end zone untouched on a 67-yard score.

After the MTSU defense stopped EIU at midfield on fourth-and-two, Gordon and Mostiller produced again with a 42-yard scoring pass that occurred after Mostiller put an inside juke on cornerback Kelvin Russell and outraced two Panthers to the goal line.

The Blue Raiders led 31-10 at the end of the third quarter, and Mostiller was on his way to catching five passes for 155 yards and two touchdowns, giving him seven to tie Green for the team lead.



Brian G. Miller/ staff

Quarterback Ronnie Gordon scrambles in MTSU's 31-24 win over EIU.

"Dee has a great attitude, and he loves to play," said Donnelly. "If we need a play, he'll make it. He loves competition."

Eastern Illinois stormed back in the fourth quarter with two touchdowns, and if it weren't for the heroics of two MTSU defensive backs, the Panthers may have rallied for a win.

Trailing 31-17 with nine minutes to play in the game, EIU drove down to the Blue Raider 19, when South Carolina transfer DeAndre James intercepted a pass and thwarted the drive. The junior free safety finished with two fumble recoveries to go along with his first interception of the year.

Following another Panther touchdown late in the game, EIU was driving down to the MTSU 33 before Simpson was intercepted by McMullen with just over three minutes to play. The Texas A&M transfer came away with two interceptions on the

afternoon and has a team-high five interceptions on the season.

Despite the fierce rally, MTSU held on to the final margin of victory.

Strong safety Darrell Love finished the game with 20 tackles, and senior outside linebacker Jeff Dunner tallied 18 stops.

"This is probably the best football game we've played," Donnelly said. "We stayed composed and moved the football well, and I'm extremely proud of our performance against their huge offensive line."

"They stayed focused, and they knew they could win. Now they're at a point where they can salvage the season. They have something to play for."

Middle Tennessee State can finish the season on a three-game winning streak by beating Tennessee Tech next week in the season finale at Horace Jones Field.

TOWC rundown



Doug Malan

Just a Spoonful

This weekend the Blue Raiders begin their basketball season at the Top of the World Classic in Fairbanks, Alaska. The field includes Montana, Providence, Alaska-Fairbanks, Alabama, Baylor and UNC-Wilmington. The teams had a combined record of 100-102 last year and two NIT bids. The following is a team-by-team guide to the TOWC.

These teams are in MTSU's side of the bracket:

Montana- Picked to finish second in the Big Sky Conference, the Grizzlies return three starters from a team that finished 20-8 last year, but received no postseason berth. Head coach Blaine Taylor is in his sixth year at the Missoula, Mont., school and has compiled a 104-41 record in that time. Chris Spoja, a 6-foot-5-inch senior, averaged 10.3 points and 4.8 rebounds last year. Kirk Walker is a senior guard who averaged 9.2 points and 3.3 assists a year ago. Eric Bowie is the other returning starter. Montana has size in 6-foot-10-inch senior center Brent Smith and 7-foot-1-inch redshirt freshman Don Carter.

Providence- The Friars are picked to finish second in the Big East Seven, behind Syracuse. Last year, former Xavier coach Pete Gillen took Providence to the NIT, where they lost to Alabama in the second round, capping off an 18-12 campaign. Four starters return, led by 6-foot-9-inch forward Austin Croshere, who scored 15.3 points per game and grabbed 5.8 rebounds last year. Senior forward Derrick Brown was Gillen's second-leading scorer last year at 14.8 PPG and 6.8 rebounds. God Shammgod returns as the team's offensive leader. The sophomore dished out 6.5 assists per game and scored 9.6 points. Senior 6-foot-9-inch center Ruben Garces averaged seven points and seven rebounds last year. JUCO transfer Abdul Brown played last year at College of Southern Idaho, the school that produced Blue Raiders Mantia Callender and Aylton Tesch.

Alaska-Fairbanks- The host Nanooks went 10-17 last year at the Division II level and finished sixth in the Pacific West Conference. Head coach Al Sokaitis is in his first year and inherits three senior starters from last year's squad. Rod Jones, a 6-foot-4-inch forward, averaged 15.5 points per game last year and 5.3 rebounds. Guard Kenyatta Reed scored 14.3 PPG and 6-foot-7-inch forward Sean Wysock tallied 9.3 PPG and 6 rebounds.

Other teams that MTSU could face: Alabama- David Hobbs enters his fifth season as head coach, fresh off a season in which his Tide finished 19-13 and advanced to the semifinal round of the NIT, where they lost to St. Joseph's. Three starters return from that team, led by senior forward Eric Washington. Washington was second in the SEC with 18.6 PPG and 6.9 rebounds. He led the conference with 3.5 three-pointers made per game. Sophomore guard Brian Williams returns after notching 10.4 points and 2.6 assists per game. Senior forward Thalamus McGhee, 6-foot, 9-inches, gives 'Bama a big body down low, who grabbed 5.2 rebounds per contest a year ago.

Baylor- The Bears struggled last year, going 9-18, but have all five starters returning. Head coach Harry Miller is in his third year and has an 18-37 overall record leading a team that was recently on probation. Baylor has a formidable frontline, with 6-foot-10-inch junior center Brian Skinner leading the way. Skinner scored 17.5 PPG and snared

Please see TOWC page 12

Basketball: Raiders stomp Sports Reach 102-74

By Doug Malan/ staff

Middle Tennessee State played its final regular season tune-up Saturday night, whipping Sports Reach 102-74. The Blue Raiders play Montana in the Top of the World Classic this Friday in their first official game.

Nod Carter scored 31 points and snared eight rebounds, and four other Raiders scored in double figures as MTSU broke open a close game in the second half.

Roni Bailey finished with 18

points, 14 rebounds, seven assists and four steals in 32 minutes, playing in the power forward position due to an injury to Mantia Callender. Eleven of Bailey's 14 rebounds were on the offensive end.

Callender suffered a sprained ankle in practice last week, but is expected to return Friday along with guard Kent Ayer.

"I was anxious to see how we would play with a makeshift lineup," head coach Randy Wiel said. "We had to

move Nod to center and Roni to power forward. And I think we played better in the second half with that lineup."

Three Freddie Martinez three-pointers and a determined Blue Raider defense allowed MTSU to go on a 13-2 run mid-way through the second half, and their 69-53 lead was never challenged thereafter.

Martinez ended the night with 16 points and eight rebounds coming off the bench.

Middle Tennessee State's defense dominated the opposition for the second consecutive game, forcing 27 turnovers. The Blue Raiders also out-rebounded Sports Reach 54-45, including 26-15 on the offensive boards.

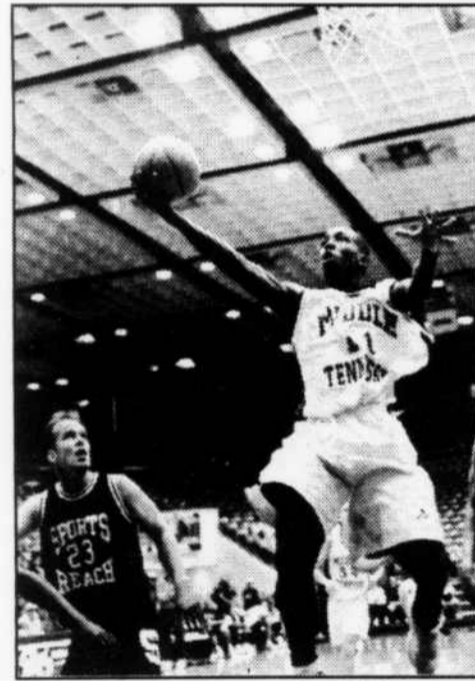
"Our defense was good tonight," Wiel said of a unit that came away with 14 steals. "The only thing was, we gave up several lay-ups." But those lay-ups were yielded to a team that constantly had players standing near half-court, waiting for outlet passes to score easily. "That may be something we'll see from some of our opponents. We just have to be ready for that," Wiel added.

MTSU shot 43-percent from the field and nailed 10 three-pointers in the game, as only seven players saw extensive action.

K.J. Harden started at point guard and finished with 14 points, six rebounds, five assists and only one turnover. Richard Duncan, who played the point in the first exhibition game, ended the game with six points and five assists.

"The point guard play was pretty good," said Wiel. "Richard just needs to be a little more consistent and take care of the ball. But our offensive timing is coming. Usually in the early part of the season, you're defense is ahead of your offense."

Malachi Allen continued to impress, bullying his way to 14 points and nine rebounds.



Brian G. Miller/ staff

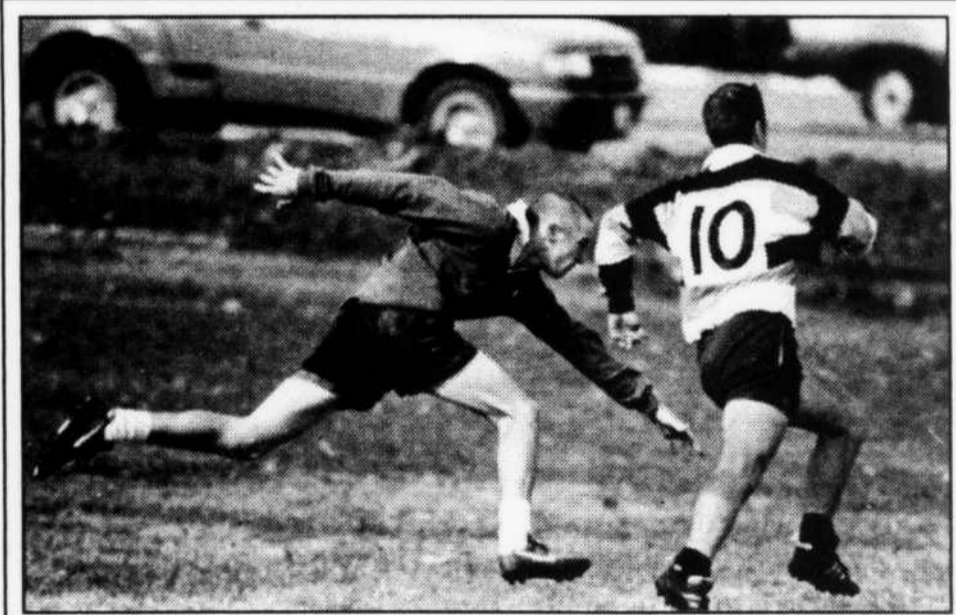
Sophomore guard Richard Duncan lays one in for two in Saturday win over Sports Reach. Duncan had six points and five assists in the game.

"Malachi is a good rebounder who uses his strength well," Wiel said. "He's different from Roni and Torrey (Moore). They rely more on their quickness to grab rebounds."

Friday's game against Montana will be a challenge for MTSU because of the Grizzlies' size inside. The Blue Raiders defend well on the perimeter — Sports Reach made only 17 percent of their 18 three-pointers — but Wiel is worried about points in the paint.

"We don't have the size that they do, and they're experienced and very good," the coach said. "But hopefully we will have Mantia and Kent back, and we will play well this weekend."

The Blue Raiders leave Wednesday for Alaska and will tip-off against the Grizzlies at 11:45 p.m. CST on Friday.



Brian G. Miller/ staff

Wes Barnes makes a run for the goal in first game against Murray St. Saturday. The team face Tennessee Tech at home this Saturday.

MTSU Rugby reigns over Murray

By Rachel Parrish/ staff

The football team wasn't the only team who was victorious this weekend. MTSU's rugby team pounded Murray State in both games, with scores of 20-12 in the first set and 31-7 in the second. High

scorers included William Mattox, Ed Allen and Wes Barnes.

Team officer Will Rogers felt the overwhelming victory was great, but the scores should have been higher.

"We came out pretty sluggish at first and initially, we had expected to beat them by a lot more," Rogers said.

Go Blue Raiders!!

The Tennessee Army National Guard has immediate openings and will pay you to train in one of the specialties listed below:

- Military Policeman
- Helicopter Mechanic
- Air Traffic Controller
- Vehicle Mechanic
- Computer Training
- Supply Sergeant

• Other Benefits •

Financial Assistance for College- Life Insurance
Pay Starting at \$8.80/ hr. - Free Auto Tags
Persons interested should contact Sergeant Dale Eaton at 898-8042.

MTSU Student Special

Rooms from

\$ 24.95

FREE:

- Extended Continental Breakfast
- Local Calls • Cable TV with CNN, ESPN & HBO
- A selection of 30 Channels

896-5080
1855 S. Church St.
Murfreesboro
Next to Ponderosa

Present coupon at check-in. Subject to availability. May not be valid during holidays, weekends and special events. Expires 11/30/96.

Le Petit Soldat



Jean-Luc Godard's second feature film was immediately banned in France. Featuring the first enchanting performance of Anna Karina, the film centers on terrorist and anti-terrorist activities at the time of the Algerian War. (1960, 87 minutes, B&W, not rated - in French with English subtitles)

Last showings tonight!!
Monday, Nov. 18 - 7 & 10 p.m.

KUC Theater



The ORIGINAL BREATHL

Nov. 19/20, Tues/Wed - 7 & 10 p.m.

Hailed as one of the true major turning points in the history of cinema, Jean-Luc Godard's first feature film is a jazz-like improvisation on existential crime thrillers. The now legendary performances of Jean Seberg and Jean-Paul Belmondo combined with Godard's fully liberated expression with camera, soundtrack and editing have called "the ninety minutes which shook the world." It is as fresh, funny, and daring today as it was on its first release. Ah, the beautiful Parisian summer! (1960, 90 minutes, B&W, not rated - in French with English subtitles)

Directed by New Wave film innovator Jean-Luc Godard and Jean-Pierre Gorin. By design the most accessible of the Dziga Vertov Group's political films, it chronicles the breakdown in a relationship between a compromised television director (Yves Montand) and an American journalist (Jane Fonda) who becomes radicalized through a (1972, 95 minutes, color, not rated - in French with English subtitles)

Tout Va Bien



November 21 - Thur - 7 & 10 p.m.

MTSU Fine Arts presents

MIDNIGHT COWBOY

A true sixties classic.



Nov. 24, Sunday, 2:00 pm only
KUC Theater FREE and OPEN

Jon Voight is incredible as Joe, a naive Texan who is convinced he can make a living in the city by selling himself to jonly rich women. Dustin Hoffman is brilliant as Ratso Rizzo, the seedy, crippled con-artist who becomes Joe's only friend. The film focuses on the strangely moving relationship between these two losers and shows how people can survive the ferocity of our world with a bit of trust and a bond of friendship. Winner of three Academy Awards including Best Picture. (1969, 112 minutes, color, R)

Sponsored by SHARE & MTSU Ideas and Issues

When a Kiss Is Not Just a Kiss



Monday, December 2
7:00 p.m.
LRC Multi Media Rm.
FREE and OPEN

Sex Is Not a Crime But It Can Be.....

An interactive theater production performed by six recent Brown University graduates.

Sports Shorts

OVC FOOTBALL STANDINGS

	OVC		Overall	
	W	L	W	L
Murray State	8	0	9	1
E. Kentucky	6	1	6	4
E. Illinois	5	2	7	3
Tenn. Tech	4	3	5	5
MTSU	3	4	5	5
Tennessee St.	3	4	4	6
SEMO	2	5	2	8
UT-Martin	1	6	1	9
Austin Peay	0	7	0	10

RESULTS

Eastern Kentucky 24, Austin Peay 10
MTSU 31, Eastern Illinois 24
Murray State 50, Tenn. 14
Southern Illinois 34, SEMO 17
Samford 31, UT-Martin 12
Illinois State 26, Tenn. Tech 15

THIS WEEK'S SCHEDULE

Saturday, Nov. 23
UT-Martin @ Austin Peay, 1:30 p.m.
E. Kentucky @ E. Illinois, 1:30 p.m.
Tenn. Tech @ MTSU, 2 p.m.
W. Va. Tech @ Murray State, 1:30 p.m.
SEMO @ Tenn. State, 1:30 p.m.

SEC FOOTBALL STANDINGS

	SEC		Overall	
	W	L	W	L
Eastern Div.	8	0	10	0
Florida	5	1	7	2
Tennessee	5	1	7	2
South Carolina	4	4	5	5

Georgia	3	4	4	5
Kentucky	3	4	4	6
Vanderbilt	0	7	2	8

Western Div.

Alabama	5	2	8	2
LSU	5	2	7	2
Auburn	4	3	7	3
Miss. St.	2	4	4	5
Ole Miss	1	5	4	5
Arkansas	1	5	13	6

RESULTS

Florida 52, S. Carolina 25
Kentucky 25, Vanderbilt 0
Tennessee 55, Arkansas 14
Georgia 56, Auburn 49, 4 OT
LSU 39, Ole Miss 7
Miss. State 17, Alabama 16

THIS WEEK'S SCHEDULE

Saturday, Nov. 23
Auburn vs. Alabama, 6:30 p.m.
Arkansas @ Miss. State, 1:30 p.m.
Tulane @ LSU, 7 p.m.
Ole Miss @ Georgia, noon
Kentucky @ Tennessee, 2:30 p.m.
South Carolina @ Clemson, noon

This week's results and schedules of local interest

MEN'S BASKETBALL

SCHEDULE
Nov. 22-24
Top of the World Classic, Fairbanks, Alaska vs. Montana, 11:45 p.m.

WOMEN'S BASKETBALL

SCHEDULE
Friday, Nov. 22
MTSU @ Ole Miss, 7 p.m.

VOLLEYBALL

SCHEDULE
Nov. 22-23
Ohio Valley Conference Tourney @ Murray

INTRAMURALS

Sign-ups are now being collected for the Campus Rec Department's Fall intramural sports leagues. Call 898-2104 for more information.

Badminton Doubles

Register: Nov. 1-22
Play begins Nov. 23, 10:30 a.m.

Whiffleball

Register: Nov. 1- Dec. 1
Play Dec. 2-4, 6 p.m.

Preseason Basketball

Register: Nov. 1-18
Play Nov. 19, 8 p.m.

CAMPUS REC EVENTS

EVENT	DATE	COST
Belay Clinic	Nov. 19	\$10-12
Hill Clinic	Nov. 19	\$10-12
Highway Cleanup	Nov. 22	Free
Caving @ Mammoth	Nov. 23	\$20-25
Kids Climbing	Nov. 24	\$8-10

TOWC:

continued from page 11

9.3 rebounds last year. Fellow 6-foot-10-inch teammate Doug Brandt holds down the power forward position and scored 12.8 PPG last year to go with

6.9 rebounds. Guards Damon Mannon and Rodney Smith combined to score 18.8 PPG and dish out 6 assists.

Southern Illinois- The Salukis finished a disappointing 11-18 last year after three consecutive trips to the NCAA Tournament. Two starters, both junior guards, return to lead Rich Herrin's squad. Scoring guard Troy Hudson scored 21.3 PPG while shooting 39-percent from the field. Point guard Shane Hawkins is the team's leading assist man (4.5 per game) and chipped in 12.4 points last year. Sophomore forwards James Watts and Monte Jenkins should get more playing time this season. JUCO transfer

AP TOP 25 POLL

1. Florida (54)
2. Ohio St. (7)
3. Florida St. (4)
4. Arizona St. (2)
5. Nebraska
6. Colorado
7. Penn St.
8. Brigham Young
9. Tennessee
10. Notre Dame
11. Northwestern
12. Washington
13. North Carolina
14. Kansas St.
15. Alabama
16. Syracuse
17. Virginia Tech
18. LSU
19. Virginia
20. Wyoming
21. Michigan
22. Clemson
23. West Virginia
24. Iowa
25. Miami

Rashad Tucker was one of the top forwards in the nation last year.

UNC-Wilmington- The Seahawks went 13-16 last year and head coach Jerry

Wainwright is entering his third year in the Colonial Athletic Conference. Three starters return with junior guard Mark Byington leading the way.

CENTURY 21

CD'S * RECORDS * TAPES * JEWELRY

New & Used CD's - Records
108 N. Baird Ln
Murfreesboro, TN 37130
(Corner of Baird & Main)
OPEN MON-SAT 11-7

We Are Currently Taking Applications for ...

Sidelines Advertising Representative

- ### BENEFITS
- Develop Creative Sales Campaigns for Local & National Advertisers
 - Sales Training Program
 - Professional Work Experience
 - Commission Plus Bonus
 - Practicum Credit Available

- ### REQUIREMENTS
- Must Work 20 Hours per Week
 - Must Have Own Transportation
 - Must Work a Minimum of two Semesters (3 Including Summer)
 - Business Dress

- ### Sidelines' Advertising Representatives are Responsible for:
- Selling and Servicing an Account List of Approximately 20 Current Accounts.
 - Developing and Presenting Ad Campaigns to Local Advertisers (including Nashville), and Providing Excellent Customer Service to all Accounts.
 - Candidates Should Have Excellent Oral and Written Communication Skills and Effective Organizational and Time Management Skills.

20 HOURS PER WEEK

PAY: COMMISSION PLUS BONUSES AND MILEAGE PAID

Campus
ALL SEATS \$1.50
726 S. Tenn. Blvd. - 890 0205
BEHIND MERCURY PLAZA

TIN CUP Kevin Costner
7:00-9:30 Stereo R

JACK Robin Williams
7:15-9:30 Stereo PG-13
Schedule Through November 21
VISIT OUR WEB SITE!
www.mtsu.edu/campus/tin_cup.html

Anastasia's Attic
New & Vintage Clothing

115 North Maple St.
Murfreesboro, TN 37130
(615) 890-6551
"On The Square!"
Gift certificates available

AROUND THE WORLD IN 5 DAYS

—SUNDAY - MONDAY—
POT ROAST
As only we can do it - slow cooked for 4 hours in special seasonings.
6.45

SIRLOIN STEAKS
Our popular U.S.D.A. Choice Sirloin Steaks, aged just right and cut on the premises daily. Served with choice of spaghetti, baked potato, hashbrowns or rice.
6 oz. cut **7.65** 12 oz. cut **9.19**

—TUESDAY—
MEXICAN-STYLE SPAGHETTI
Our own chili recipe made with extra meat and zesty Mexican spices
5.19

—WEDNESDAY—
SPAGHETTI FEAST
Your choice of any spaghetti dinner with any of our delicious homemade sauces.
5.19

—THURSDAY—
OVEN-BAKED CHICKEN
Skinless, half chicken, baked and oven-baked with herbs and spices. Served with choice of spaghetti, baked potato, hashbrowns or rice.
6.25

All Specials include choice of Soup or Salad

Demos
1115 N.W. Broad St.
896-3701

UNIVERSITY X by J. Lawrence Lasser



CLASSIFIEDS

Sidelines recommends that you use discretion before sending money for any advertised goods and services. We recommend that you get in writing a full description prior to sending money.

Notice

Alpha Kappa Psi, Professional Business Fraternity, would like to congratulate our new members: Richard Detweiler, Jeanie Early, Heather Judkins, Han Phuong, Terri Powell, and Mary Ann Sadler. Congrats!

Student from central Arkansas looking for others from central Arkansas area to carpool with for holidays and weekend trips home. Leave message at 895-8728.

Attention all students!!! Grants, scholarships, aid available from sponsors!!! No repayments, ever!!! \$\$\$ Cash for college \$\$\$ For info: 1-800-243-2435.

ZAP YOUR FAT. Experience more energy. Lose weight & inches. 100% natural. I've lost 37 lbs. Call (615) 595-9849. Misty.

CASH LOANS on valuables, jewelry, collectibles, hunting guns, CDs, TVs, etc. Gold n Pawn 1803 NW Broad Street. 896-7167. Please come in.

Services

WORD PROCESSING: Student papers, theses, resumes, etc. Laser printing. 367-2908 (Nashville).

TYPING - Papers, resumes or other material professionally typed at reasonable rates. Call 890-6106 and leave name and number.

Roommate

Roommates Needed! 4 bedroom house near campus! non-smoker, no pets Rent \$200 - \$260. Call 896-7113

Opportunities

Extra money for your sorority, fraternity, or other organization. Individuals

welcome also. Small initial investment. Backed by Better Business Bureau. Call for video. No obligation. Dan 867-2572.

ATTENTION STUDENTS: Earn extra cash stuffing envelopes at home. All materials provided. Send SASE to Midwest Distributors, PO Box 624, Olathe, KS 66051. Immediate Response.

Important information if you are 18 years or older and want or need an income of \$4,000 or more a month. No exp. necessary. Part-time or full-time. Call immediately! 1-800-466-9222, ext. 5312.

\$1750 weekly possible mailing our circulars. No experience required. Begin now. For info call 202-298-9369.

Help Wanted

CRUISE SHIPS HIRING - Travel the world while earning an excellent income in the Cruise Ship & Land-Tour Industry. Seasonal & full-time employment available. No exp. necessary. For info. call 1-206-971-3550 ext. C55046.

Earn money and have fun! New Student Orientation needs Student Orientations Assistants and clerical workers for CUSTOMS 1997. Apply in KUC 122 or call 898-2454 for information.

EARN MONEY FOR TUITION, CLOTHES, CAR PAYMENTS, SAVING, ETC. PART TIME OPPORTUNITY IN SALES. NO COLD CALLING. FLEXIBLE HOURS. LOCAL TRAINING. 1-800-398-5012 (9 am - 8 pm).

Earn MONEY and FREE TRIPS!! INDIVIDUALS and GROUPS wanted to promote SPRING BREAK! Call INTER-CAMPUS PROGRAMS at 1-800-327-6013 or http://www.icpt.com

For Sale

Matching Couch and Chair \$150, 3 month old Roper Washer/Dryer \$500. If interested contact Michelle at 890-8840.

Moving Sale: Oak Entertainment Center \$250, Microwave \$100, Ceramic Lamps \$100, Small Kitchen Table \$100, Small TV \$50, Dehumidifier \$50, King Size Waterbed \$200, Desk w/chair \$50, Brother Word Processor \$200, Golf Clubs \$100. Call 849-6902

Fluffo supreme mattress set. Queen, almost new, dark blueish green with deep red floral. \$175 for set Call 793-7054 or 1-800-670-5606.

Brother word processor with 14" monitor. Used only 1 semester. \$300 new - will sell for \$150. Call 849-7655.

TREK Y-11 Mountain Bike. Less than 1 yr. old, kooka cranks & rings, nukeproof hubs & handle bar, shimano deore LX, trek monitor, ATAC pedals, over \$2500 invested- will sell for \$1800. Call 849-7655 lv. msg.

1987 Acura Integra: silver/gray, 5 speed, 4 cyl. 149 K. Sunroof, new clutch, recent timing belt and more. Runs great. \$4100 obo. 383-8533 or page me at 1-800-509-5889.

Moving Sale: Full-size bed with mattress, box spring, night table, twin bed, carpet, 14.4 modem/fax/soundblaster. Call 890-6106.

GOVT FORECLOSED homes from pennies on \$1. Delinquent Tax, Repo's, REO's. Your area. Toll Free (1) 800-218-9000 Ext. H-3834 for current listings.

SEIZED CARS FROM \$175. Porsches, Cadillacs, Chevys, BMWs, Corvettes. Also Jeeps, 4WDs. Your Area. Toll Free 1-800-898-9000 Ext. A-3834 for current listings.

Looking for a computer? 486dx/dx2. With Monitor, CD, Sound, & software \$899 until Christmas! Only at Murfreesboro Business Machines 890-6498.

Personals

Meet someone special: With the Nashville Matchmaker. 100's of voice ads! Anonymous and free call at 366-8825.

W M T S 88.3 fm



FOR THE MUSICALLY CHALLENGED

MTSU CHANNEL 8

	MON	TUES	WED	THUR	FRI
6:30am	Blue & White	Action NEWS 8	Action NEWS 8	Action NEWS 8	Action NEWS 8
7:00	The Early Evening Show	ENT	ENT	ENT	ENT
7:30	The Early Evening Show	Campus Talk	Campus Talk	Campus Talk	Campus Talk
8:00	The Tony Hunter Show	The Early Evening Show	The Early Evening Show	The Early Evening Show	The Early Evening Show
8:30	The Creep Show	The Early Evening Show	The Early Evening Show	The Early Evening Show	The Early Evening Show
9:00	Campus Talk	The Tony Hunter Show	The Tony Hunter Show	The Tony Hunter Show	The Tony Hunter Show
9:30	(schedules for 9:30am-12pm, 12:30pm-3pm, 3:30pm-6pm follow same as schedule for 6:30am-9am)	The Creep Show	The Creep Show	The Creep Show	The Creep Show
10:00		ENT II	ENT II	ENT II	ENT II
10:30		Blue & White	Blue & White	Blue & White	Blue & White

(Tues. thru Fri. schedules for 11am-2:30pm & 3pm-6pm follow same as schedule for 6:30am-10:30am)

Buy recycled. It would mean the world to them. Thanks to you, all sorts of everyday products are being made from materials you've recycled. But to keep recycling working for the future, you need to look for these products and buy them. For a free brochure, call 1-800-CALL-EDF.

Get noticed! Place an ad in Sidelines' Classified section

off the mark by Mark Parisi



Finally,
you won't mind
being
carded.



Now when you use your Visa® card,
you'll save big at these places.



It's everywhere you want to be.

© 1996 Visa U.S.A. Inc.

Mrs. Fields **SAVE \$4**
ON ANY PURCHASE OF \$20 OR MORE
OR SAVE \$2 ON ANY PURCHASE OF \$10 OR MORE.
Yum! Treat yourself to something tasty for less when you pay with your Visa® card at participating Mrs. Fields locations. Save \$4 on any purchase of \$20 or more. Or save \$2 on any purchase of \$10 or more. Offer valid August 1, 1996, through January 31, 1997.

Terms and Conditions: Certificate redemption is solely the responsibility of Mrs. Fields. Offer valid August 1, 1996, through January 31, 1997 at participating Mrs. Fields retail locations or while supplies last. One certificate per customer per visit. Any other use constitutes fraud. Not valid with any other offer. Void where prohibited, taxed, or restricted by law. Valid only when you use your Visa® card. Applicable taxes must be paid by bearer. Only redeemable in the U.S. Cash value 1/100 cent. Visa Rewards is a service mark of Visa International Service Association.

LIMITED
ENJOY THE BEST IN AMERICAN FASHION.
Save \$10 on any purchase of \$65 or more. Or save \$20 on any purchase of \$100 or more. Simply present this certificate and pay with your Visa® card at The Limited. Offer valid August 1, 1996, through January 31, 1997.

Terms and Conditions: Certificate redemption is solely the responsibility of The Limited. Offer valid August 1, 1996, through January 31, 1997. Valid for one purchase only and must be presented at the time of purchase. Cannot be used toward the purchase of The Limited Gift Certificates. Offer valid on sale merchandise. Not valid with any other offer. Any other use constitutes fraud. Void where prohibited, taxed, or restricted by law. Valid only when you use your Visa® card. Applicable taxes must be paid by bearer. Only redeemable in the U.S. Cash value 1/100 cent. Visa Rewards is a service mark of Visa International Service Association. Ltd. #288

TAKE 15% OFF ANY SINGLE ITEM PURCHASED AT STRUCTURE
Structure invites you to take 15% off the purchase of any single item when you pay with your Visa® card and present this certificate. Structure Style is authentic dressing for real life. Our relaxed fit allows you to look good while feeling comfortable and confident. Offer valid November 1, 1996, through January 31, 1997.

STRUCTURE

Terms and Conditions: Certificate redemption is solely the responsibility of Structure. Offer valid November 1, 1996, through January 31, 1997 at Structure stores only. Only one certificate or discount may be used per purchase. This certificate is not redeemable for cash, nor is it valid toward any previously purchased merchandise. Certificate cannot be applied to the purchase of gift certificates or on redlined merchandise. Associates of Structure and its affiliates are not eligible to receive this discount. Good only for purchase of products indicated. Not valid with any other offer. Any other use constitutes fraud. Void where prohibited, taxed, or restricted by law. Valid only when you use your Visa® card. Applicable taxes must be paid by bearer. Only redeemable in the U.S. Cash value 1/100 cent. Visa Rewards is a service mark of Visa International Service Association.

Firestone **\$12.99**
MASTERCARE CAR SERVICE
FIRESTONE TIRE & SERVICE CENTERS

OIL CHANGE AND/OR SAVE 10% ON ANY BRIDGESTONE OR FIRESTONE TIRE PURCHASE.
Pay with your Visa® card and get an oil change for only \$12.99! Or save 10% on the regular price (based on the store's catalog/POS system) of Bridgestone or Firestone tires. To redeem this offer, present this certificate when you pay at any of the over 1,300 company-owned Firestone Tire & Service Center locations. Mention code P100 #03468 for oil change offer and code P100 #03476 for tire offer. Offer valid August 1, 1996, through January 31, 1997.

Terms and Conditions: Certificate redemption is solely the responsibility of Firestone. Offer valid August 1, 1996, through January 31, 1997. Good only for purchase of oil change services and/or tires indicated at company-owned Firestone Tire & Service Centers. Savings based on 1995 average national selling prices. Oil change offer good for most vehicles and includes: installation of new oil filter, refill with up to 5 quarts of Kendall® 10W-30 oil, and chassis lubrication (if applicable). This price includes oil disposal fee. Tire offer includes performance and light-truck radials. Not valid with any other offer and cannot be used to reduce outstanding debt. Void where prohibited, taxed, or restricted by law. Valid only when you use your Visa® card. Applicable taxes must be paid by bearer. Only redeemable in the U.S. Cash value 1/100 cent. Visa Rewards is a service mark of Visa International Service Association.

Insight **MICROSOFT**
OFFICE PRO 95 CD-ROM FOR \$169.
Save \$360 on the Microsoft Office Pro 95 CD-ROM (regularly priced at \$529) when you use your Visa® card at Insight — America's discount source for computers, hardware, and software. Microsoft Office Pro 95 includes Word, Excel, Powerpoint, Schedule, and Access. To place an order or receive a FREE catalog, call 1-800-927-3246, 24 hours a day. Reference code 217058-V when ordering. Offer valid August 1, 1996, through November 30, 1996.

Terms and Conditions: Certificate redemption is solely the responsibility of Insight Direct. Offer valid August 1, 1996, through November 30, 1996. Valid only with photocopy of current student ID. Only one order per person. Does not include shipping charges. Any other use constitutes fraud. Not valid with any other offer. Void where prohibited, taxed, or restricted by law. Valid only when you use your Visa® card. Applicable taxes must be paid by bearer. Only redeemable in the U.S. and Canada. Cash value 1/100 cent. Visa Rewards is a service mark of Visa International Service Association.