

## Accident victim recuperating

# Two found guilty of hit-and-run

Two juveniles were found guilty in Rutherford County Juvenile Court last week on charges made from the Dec. 3 hit and run accident injuring Peresa Yuk.

A 16-year-old male was found guilty of leaving the scene of an accident involving property damage and personal injury, and of driving without a license.

A 17-year-old female was found guilty of leaving the scene of an accident involving property damage and personal injury.

An adult passenger of the vehicle at the accident, James Scott of Murfreesboro, pleaded not guilty to charges of contributing to the delinquency of a minor.

Yuk, a 26-year-old MTSU graduate student from Hong Kong, was struck by a car at approximately 6:45 p.m. on Dec. 3 last year on C Street behind the LRC.

Yuk was walking with a friend on the right side of the street when the car driven by the juvenile struck a jeep and then hit Yuk, dragging her into the grass above the curb.

According to a patrolman's report, the occupants of the car jumped out, after which Scott got in and drove off and the juveniles ran away.

Both juveniles told the court that they ran because they were confused and frightened. Both also claimed that the vehicle was tra-

veling at 15 miles per hour when the accident occurred.

Scott, faced grand jury proceedings yesterday.

A fund-raising drive to pay for hospital bills for Yuk has been initiated by university officials and the Murfreesboro Bank and Trust. Contributions to help pay for the estimated \$6,000 in bills for treatment at Vanderbilt and Rutherford Hospitals should be sent to Murfreesboro Bank and Trust, Attention Dallas Caudle. Checks should be made out to both the bank and to Peresa Yuk.

Yuk is presently recuperating under the care of friends in Nashville.



A.E. Van Vogt spoke last night at the DA. The writer is considered one of the top five founding fathers of science fiction writing. [Photo by Robin Rudd]

# SIDELINES

Middle Tennessee State University

Vol. 51, No. 37

Tuesday, January 10, 1978

## Faculty senate requests study of faculty parking

by Cindy Houston

A request calling for a report on the number of faculty parking spaces was passed by the faculty senate last night at their monthly meeting.

After their request for individual numbered parking spaces was turned down by the traffic committee, the senate members requested a reason for the denial. The main reason given by the traffic committee was that it would take more parking spaces if each teacher had their own space.

A discussion of the recent developments in faculty parking followed. A senator pointed out that

the faculty has lost several parking spaces in past years due to construction and other reasons. It was also mentioned that there may have been a rise in the number of faculty members in the past years.

Lon Nuell proposed that teachers be given Greenland Avenue parking lot and, after parking there, be given appropriate transportation to campus. The proposal was not passed.

Another proposal was made that all parking spaces in the central campus be set aside for faculty only. An entrance gate to a faculty parking lot was also mentioned but neither was passed.

The senate discussed extensively how to get information from the Board of Regents concerning their stand on tenure. A proposal to request the information directly from the chancellor of the board was defeated.

Patrick Doyle said the information was directly concerned with them and they deserved to know. After an open floor discussion, a proposal was made to find the proper channels to request the information and then direct a letter through the proper channel.

Doyle also told of a professional negotiations workshop to be held at MTSU Feb. 24-25. Letters are tentatively planned to be sent to

several law firms, faculty senate presidents in Tennessee, and all university faculties in Tennessee.

A proposal by William Connelly and Lon Nuell, which called for students to use their basic skills of communications in all areas, was amended with the addition of the clause "basic mathematical skills."

Concern was expressed about several faculty members receiving notice a few weeks before Christmas of not being recommended for tenure. However, one member pointed out that there was not good time to receive bad news. He also pointed out that Christmas vacation was a good time to begin looking for a new job.

## Almost 9,300 students are expected for the spring

by Jane Hamlin

Enrollment for the 1978 spring semester totaled 8,670 after registration Friday and Saturday, according to Cliff Gillespie, dean of admissions and records.

Unofficially, enrollment is up 225 over last spring. The official figures will depend on the addition of three off-campus registrations not yet completed.

Gillespie estimates the final figure will show MTSU with 9,200 to 9,300 students.

Although this will mean a drop from fall's enrollment of 10,223, a decrease is usually expected in the

spring enrollment, said Gillespie.

"This spring enrollment is usually about 90 to 93 percent of the fall figure," Gillespie said. "The decrease is caused by the enrollment of fewer new students for the spring.

"So far this year we have graduated over 500 students, suspended over 350 for academic reasons and several hundred probably dropped out for personal reasons."

Gillespie added, "We probably lost about 1,500 from the fall semester and can expect to gain about 500 new students in the spring."



Fred Rolater of the history department emphasizes a point during discussion at the faculty senate meeting last night. [Photo by Robin Rudd]



**RENT**

Apartments for rent. One or two bedrooms at Pine Park Apartments. Call 896-4470.

One or two bedroom apartments now available at Holly Park. Call 896-0667.

**SERVICES**

Term papers, theses, reports, copies while you wait. Typing service available. The Copy Shop, 431 N.W. Broad. 890-2426.

**PERSONALS**

INTERESTED IN LOW COST JET TRAVEL TO EUROPE\* and Israel? STUDENT TRAVEL CENTER can help you travel when you want and return when you want at minimal cost. For more info call TOLL FREE 800-325-8034.

Need a roommate for a 2-bedroom apartment at Holly Park. Already furnished. For information, contact front office at Holly Park or MTSU Box 8760.

Mobile home for rent. Three bedrooms, 1½ baths, unfurnished, \$180. per month, and appliances are furnished. Call 890-6784 from 8-6, after 7 p.m., 890-2597.

MUSIC! MUSIC! The Bookstore now has music books and music accessories.

Show your valentine how much you care! Mail a valentine to your valentine from Valentine. Send \$1.00 with each stamped, addressed Valentine for carefully timed re-mailing with beautiful personalized message from America's "Heartland." Valentines, Trade Winds Lodge, NP3214, Valentine, Nebraska 69201.

MCAT-DAT Review Course take in Atlanta in 3 to 5 days, P.O. Box 77034, Atl., Ga 30309, Phone: (404) 874-2454.

LOST: Male, mixed-setter, black with white markings, 55 lbs., 893-6489.

**JOB OPENINGS**

Part time and full time positions available. Mornings and lunches, weekends, nights. Apply at either Sir Pizza locations.

Help wanted at B & L Pizza, male or female. Apply after 4:00 p.m.

Summer Jobs guaranteed or money back! Nation's largest directory. Minimum fifty employers/state. Includes master application. Only \$3 sumchoice, Box 645, State College, Pa. 16801.

# Collage is ready to be distributed

by Jane Hamlin

"Collage does exist," Editor Crouse Powell said.

Although some people were beginning to wonder, Powell said the first issue of the magazine will be distributed Wednesday.

Collage was scheduled to be published last semester, but was delayed because of lack of material and failure to meet deadlines, he said.

"Very little material was contributed for the first issue. We ended up with mostly poetry and artwork," said Powell, a Murfreesboro senior. "More prose was needed."

Despite the difficulties encountered in publishing his first issue, Powell feels Collage turned out well. The magazine will be available at Sidelines distribution

points.

Jan Ellis, last year's Collage editor, and Tom Wright, who now works for a Nashville advertising firm, did an excellent design job on the Winter Collage, Powell said.



The second and final issue, due to be published the end of March or the first of April, will follow the same basic format as the first issue.

Contributors are needed in every area of the magazine and should meet a Jan. 30 deadline, according to Powell.

For the next issue of Collage, Powell will need the following:

- One long fiction story—about five to six pages in length
- Two short fiction stories
- One feature story of local interest
- Two features on any topic
- At least one in-depth journalistic piece
- 10 to 15 poems
- Art-work and photography pieces

Anyone interested in doing illustrations or photographs for the next issue should contact Powell at 898-2533.

## Four silent movies to be aired this week

"Keystone Hotel," "The Gold Rush," "Teddy at the Throttle" and "Do Detectives Think?" are scheduled to be shown in the University Center Tuesday and Thursday at 3:30, 6 and 8 p.m.

The four silent movies, presented by student programming, features the Keystone Cops and the late Charlie Chaplin.

"The Gold Rush" is considered to be a comedy classic with Chaplin as the desperate little tramp trying to cook his shoe. The movie is also directed by Chaplin.

Admission is 50 cents for the afternoon show and 75 cents for the evening features.

INTRODUCING ---

## Leotards Unlimited

Now Supplying Middle Tennessee With . . .

**GYM-KIN & DANSKIN**

Leotards\* Tights\* Briefs\* Ballet Shoes\* Tap Shoes\* Gymnastic Slippers\* Hats\* Canes\* Custom Made Costumes\* Books\* Music\* Athletic Shorts\* Socks\* Warm-Ups\* Mats and Equipment\* Chalk\* Rosin\* Tap\*  
For: Men, Women and Children!

Corner Village

607 SE Broad St.

Murfreesboro

890-3807

HOURS:  
10:00-5:00 Mon.-Sat.



# Ermondo's

is proud to present

## "DEEP-DISH PIZZA"

to its menu, starting tomorrow!

**DOUBLE CRUST!**

**DOUBLE CHEESE!**

**DOUBLE SAUCE!**

**DOUBLE IMAGINATION!**

Available in the same ingredients and combinations that are now being served.

Greenland Dr.

890-0890

## Phone machine planned by ASB

ASB plans for the spring semester include purchasing a 24 hour telephone answering machine, according to ASB President Bobby Francescon.

The \$200 machine will play a tape recorded message describing upcoming events and will also allow callers to leave their complaints, Francescon said. Money for the device will come from ASB's Ombudsman fund, he added.

ASB will also sponsor another Faculty Administration and Students Together (FAST) picnic this spring, Francescon said. He said he has been talking with Doug McCallie of ARA Food Services concern-



Clay Tucker

## Dean Tucker to resign

Clay Tucker, dean of the school of Liberal Arts, will retire June 30.

Tucker, who came to MTSU in 1956 as an English instructor, became dean in 1962 and has been here longer than any other dean.

When Tucker came to MTSU the school was a college with only 2,100 students. He said the university's rapid growth in the 1960's was "painful," adding that it did not need to continue expanding so quickly.



Bobby Francescon

ning the event.

A ski weekend is planned for the end of February, Francescon said. The ASB will also try to get student discounts for a week of skiing in Colorado during spring break, he added.

Dates have not been set for the ASB elections this spring, he said.

While there are no ideas as yet for fundraising for the ASB, Francescon said the group will be active in working with the Lung Association.

# MID-WINTER SALE

## FOR HIM

## FOR HER

Suits	\$69.99	Denim Jackets	\$14.99 to \$18.99 Reg. \$23-\$27
Sweaters	1/3 OFF	Jeans	\$12.99
Slacks	\$12.99	Vests	\$8.00
Jeans	\$12.99	Sweaters & Slacks	1/3 OFF
Flannel Shirts	\$8.99 Reg. \$13.00	Knit Tops	\$8.99
Dress Shirts	\$9.99 Reg. \$15-18	Gold & Silver Jackets	\$4.99
Stocking Caps	\$2.99	Navy Dockside's	\$19.99

FORMERLY THE SLACK SHACK

# BURKHART'S

123 N. Maple  
893-6725

Open Till 9:00

RC Model Aircraft  
HO Trains Magazines  
Plastic Models  
**CORNER HOBBIES**  
607 S.E. Broad 893-7783  
Hours 10-7 Weekdays

PREPARE FOR: <sup>Our 40th Year</sup>  
MCAT • DAT • LSAT • GRE  
GMAT • OCAT • VAT • SAT  
NMB I, II, III,  
ECFMG • FLEX • VQE  
NAT'L DENTAL BOARDS  
NURSING BOARDS  
Flexible Programs & Hours  
There IS a difference!!!  
**Stanley H. KAPLAN**  
EDUCATIONAL CENTER  
Test Preparation Specialists Since 1938  
For Information Please Call  
Nashville:  
(615) 327-9637  
Centers in Major US Cities  
Toronto, Puerto Rico and Lugano, Switzerland

## Editorials

# More access is paper's goal

This semester, *Sidelines* is trying to become more accessible to the students it serves.

The editorial page, where opinions can be voiced concerning campus and non-campus issues, has been changed with the hope of letting more voices be heard.

The open forum column and Jimmy Wright's column are both attempts to present a more diversified forum. Wright's column will appear every week and the Open Forum column is open to everyone, including administration, faculty and people not directly associated with the university. If you have a statement to make, make it.

Letters to the Editor are where more opinions can be made. Any responses to things that have been printed in the paper make excellent letters. The letters not acceptable are those which are closer to advertising than opinions or are better suited for the personal section of the classified ads.

Buying an ad may be the best method for a group or organization to announce an upcoming event. If it runs just in a newsstory, the story may be edited or not even printed in the paper, due to the restricted amount of space per publication. An ad and a story gives the reader two opportunities to see the announcement.

Stories will be written on events if they are newsworthy. By letting *Sidelines* know an event is going to happen chances of getting coverage increases. The paper is not designed for free advertising, though.

*Sidelines* does not purposefully exclude any group or person from either voicing an opinion or receiving coverage. It tries to be fair with its coverage and welcomes any opportunity to circulate information and ideas to the campus.

## Policy changed on letters

Letters to the Editor are the best way for students to express their views on things of the campus or any subject they choose. This campus is fortunate to have students concerned enough about issues to put their opinions on paper.

In the past, *Sidelines* has required that letters have the name and address of the writer on the letter. Last fall however, letters were received which were not written by the owner of the signature that appeared at the end of the letter. The letters were published with the belief they were authentic and caused unnecessary embarrassment for several people when the letters were printed.

To avoid this problem in the future, telephone numbers are to be included along with the name and address. The phone number will not be printed with the letter but it will give the staff another check to insure the authenticity of the letter.

Including the phone number will also give the staff a way to check the wording on handwritten letters.

A staff member trying to figure out the wording may guess wrong and change the meaning of the whole letter.

Letters are your chance to voice an opinion. Use it!

**SIDELINES** welcomes all letters, columns and guest editorials. Letters to the editor will be accepted and printed unless they are of a libelous or malicious content.

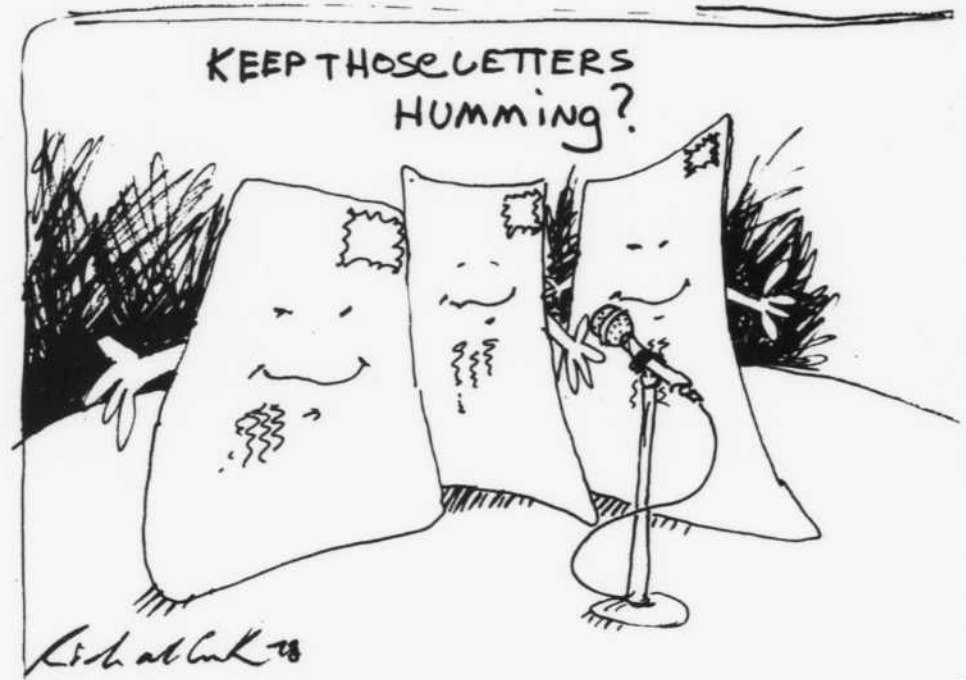
Letters submitted must have the name, box address, and phone number of the writer. Names will be withheld if requested. The phone number will not be printed, but will be used to verify the letter.

Please send all letters and comments to **SIDELINES**, Box 42.

### SIDELINES STAFF

Ben Eubanks Editor in Chief	Judy Gordon Advertising Manager
Bill Ray Production Supervisor	Cathy Wood Managing Editor
Steve Miller News Editor	D'Nice Lawson Feature Editor
Ted Rayburn Copy Editor	John Pitts Sports Editor
	Steve Harbison Photo Editor
	Byron St. Dizier Publications Coordinator

*Sidelines* is published every Tuesday and Friday by the students of Middle Tennessee State University. Editorials and columns reflect the opinion of their authors and not of the MTSU administration, faculty, staff or newspaper adviser Byron St. Dizier.



Jimmy Wright

# Presidential selection: A job for Congress?

When Gerald Ford was President and Nelson Rockefeller was Vice-President our nation was in a unique position of having the two highest officers in the land chosen with the approval of Congress. This means of filling these offices is not new. Many members of the Constitutional Convention of 1787 favored this method. The advantages of this plan are worth considering today. For instance, taxpayers probably would not be investing \$200,000 plus dollars a year training presidents such as Jimmy Carter.

On May 29, 1787, Edmund Randolph introduced the Virginia Plan. The seventh article of this set out that the national executive should be chosen by the National legislature. On June 1, 1787, Roger Sherman stated that he "considered the executive magistracy as nothing more than an institution for carrying the will of the legislature into effect, that the person or persons ought to be appointed by and accountable to the legislature only..." In votes, this method of selection won several times until according to Madison's notes, it was later replaced because of the "danger of intrigue and factions."

The method finally chosen for electing our presidents proved to be unworkable. At first no real problem was created because of the popularity of George Washington. However, in 1800 the state legislatures broke the system down as they cast 73 votes for both Jefferson and Burr.

From 1796 through 1820 party caucuses in Congress named the candidates for president. With effective demise of the Federalist party in 1800, the presidents were actually chosen in Congress, with the people only ratifying selections.

Today the system has grown into a monster that plagues both parties and country with evils recognized easily but more often defying remedy. State primaries in approxi-

mately half the states plus the campaigns for convention delegates in the other states impose a tremendous burden that eliminates all but those candidates willing to seek office aggressively and with a large financial backing. To obtain this backing in sufficient amounts, resorts must be made to those who will expect something in return for their investment in a candidate. Also, the present system invites a physical danger to the candidate which is completely avoidable under a legislatively chosen system.

What I am advocating is a return to the original "framer's intent"- a president selected by the legislature- which was distorted by an exaggerated concept of separation of power.

The framers of our constitution (who were on the whole good judges of the English system) chose to base their decision on the obscure language of Montesquieu (who was basing his concepts on his French interpretation of a changing English system).

In a point by point method these are the advantages of a legislative system of choosing our Chief Executive:

- This plan would create a government in which consistent policies would be the rule rather than the exception.

- Citizens would know where to place the blame (no passing the buck).

- No more need for gigantic treasure chests for presidential elections.

- Congress would choose more qualified candidates. (look at the ones they picked from 1800 to 1820)

- No more lame duck presidents.

It is an accident of history that this plan was not written into our Constitution. Today this method could be implemented through an amendment. This plan could solve our many problems with the choosing of our Chief Executive.

Open Forum

SHAKERS

by DBFischnetz

Ecology concern is still needed

by Patrick Doyle  
Assistant Prof. of Biology

Ecology and environmental problems should be of interest and concern to everyone. All mankind is part of an ecosystem, and man both affects and is affected by the environment.

Our society, because of its advanced technology and excessive consumption of resources, creates serious environmental problems. One reason for this is that our knowledge of environmental factors can't keep up with the changes our society brings about. Hundreds of new chemicals are introduced into our environment daily. To determine the effects of each of these chemicals is difficult at best. It is impossible to determine the effects of all their possible combinations.

Few individuals want to be part of the problem, but it is very difficult to determine how one can correct present ills and prevent future ones. For one individual to be effective, exceptional talent, time, and resources are required. The collective efforts of a group, however, may be very effective and yet not burden any one individual.

There are a large number of groups from which an individual may choose, each of which require varying degrees of commitment. Some only ask for financial support, while others ask for time and talent. The league of Women Voters, Sierra Club, Audubon Society, Tennessee Citizens for Wilderness Planning, Save Our Cumberland Mountains, the Scenic Rivers Association, and the MTSU Biology Club are just a few of the organizations that are involved to varying degrees with environmental problems.

The Tennessee Citizens for Wilderness Planning (TCWP) was organized by a group of individuals in east Tennessee who were concerned about a variety of environmental problems. Membership has increased steadily and expanded into middle and west Tennessee. The MTSU Biology Club is a member of TCWP, as are many of its members.



Looking back...

In January of:

1977- a snowstorm caused a decline in the number of people registering to 8,800. Due to the tremendous amount of late registration, officials cancelled late registration fees.

1973- High Rise East was officially changed to Cummings Hall in honor of James H. (Mr. Jim) Cummings, a former state legislator.

1968- David Mathis was selected as Editor-in-chief of Sidelines for the spring '68 semester.

1953- MTSC Arena Theater presented 'The Browning Version' as the first production of the year.

The group to which one chooses to belong is not as important as being actively involved. Once the facts are presented, anyone can at least write a letter expressing personal views and wishes to local, state, and/or national officials. For democracy to work effectively, citizens must take an active part in policy formation and implementation. Get involved!

**MAIL A Valentine**

Show Your Valentine How Much You Care

**TO YOUR VALENTINE FROM VALENTINE**

Send \$1.00 with each stamped, addressed Valentine for carefully timed re-mailing with beautiful personalized message from America's "Heartland." Valentines. Trade Winds Lodge-NP3214, Valentine, Nebraska 69201

**U.C. CINEMA**

Showing Jan. 11 & 12: Four Silent Movies-

Charlie Chaplin

Laurel & Hardy

Keystone Cops

Rated G

Admission: 50¢ for the 3:30 Matinee & 75¢ for the Evening Shows.

Coming Jan. 16 & 17--"Taxi Driver"

**King's Table**  
American Smorgasbord Restaurants

**ALL YOU CAN EAT FOR ONE LOW PRICE!**  
Lunch \$2.09 Dinner \$2.79  
11:00-2:30\* (Plus Tax And Beverage) 4:30-9:30\*

Special Childrens Price - 15¢ Per Year Through 10 Years Of Age

**YOUR CHOICE**

- Selection Of Meats
- Fried Chicken - Our Specialty
- Variety Of Salads
- Potatoes - Green Vegetables - Grapes
- Hot Rolls - Corn Bread
- Choice Of Desserts

\*Menu Changes Each Week

BANQUET ROOMS/RESERVED SEATING

CLOSED SUNDAYS



FINE MEXICAN FOOD

# PEDRO'S

*"The delicious taste of 'Ol Mexico!"*

## WELCOME NEW STUDENTS!

**VALUABLE COUPON**

**BUY ONE DINNER**  
GET THE SECOND OF EQUAL VALUE **1/2** PRICE

Valid Tues., 1/10/78 thru Fri., 1/13/78, 5-8 p.m.

**PEDRO'S** 1325 Greenland Dr. Murfreesboro 890-6628

**CLIP & SAVE**

Every Wednesday,  
**FREE** Sopapita with  
Regular-Priced  
Dinner

# TACO SUNDAY

# 30¢

### MTSU Special:

Beef Burrito, Chips, and  
Small Drink--

## \$1.19

### Daily Special:

Taco, Chili, and Chips--

## 99¢

## WE DELIVER FREE!

Minimum--\$1.50 Purchase

## 890-6628

# Sea Level will present semester's 1st concert

The semester's first concert will begin at 8 p.m. January 12 in the Dramatic Arts Auditorium.

Sea Level, with special guests The Winters Brothers Band, is presented by the Special Events Committee and Sound Seventy.

General admission tickets will be \$5 in advance and \$6 the day of the show. Tickets can be purchased in room 308 of the U.C.

Sea Level is basically remnants of the Allman Brothers band, according to Moby, a disc jockey at KDF-FM. This includes members Chuck Leavell and Randall Bramblett, on keyboards, Jai Joahanny Johanson on drums, Jimmy Nalls and Davis Causey on guitar.

Other members include George Weaver on drums and Lamar Williams on bass. Bramblett, Leavell, Nalls and Williams contributes on the vocals.

Their first album, "Sea Level", was recently nominated for Best

Debut Album for the first annual North American Rock Radio Awards program. "Cats on the Coast" is a newly released second album.

Moby describes the band as excellent with a minor keyed progressive sound that is predominantly instrumental.

The Winters Brothers Band is from Franklin, and Moby considers their sound Southern rock. The brothers Dennis and Donny on vocals and guitar are accompanied by Gene Watson on Bass, David Davis on keyboards, and Kent Harris on drums.

The brothers are third generation music makers from the Winters family. Both their father and grandfather were country band members.

Their first album, "The Winter Brothers Band," was chosen LP of the week last year by the Bobby Poe report and a Merit Plus Albums by Walrus.



The Winters Brothers Band

## UC carpet stolen before it is laid

University police and University Center officials remained baffled today over the identity of a thief who walked off with a 10 feet by 12 feet section of carpet Saturday which was to be laid in the Games Room.

The thief apparently stole the carpet while workmen were transporting sections of the carpet to the Games Room on the third floor of the UC by elevator. The piece of carpet is valued at \$100.

According to Dallas Biggers, UC manager, the carpet arrived in 70 foot strips on 12 foot wide rolls and was too large to carry up the stairs. The workmen measured the Games Room floor and cut the carpet into sections in front of the UC bookstore.

"They (the workmen) couldn't get all of the sections into the elevator so they made two trips,"

Biggers explained. "When they came back down, they noticed part of the carpet was missing. It's probably in somebody's living room right now."

Apparently, the University police have no clues in the case.

"At this time we are hopeful that something will turn up," campus officer Karl Moats said. "I don't think I can say anything more than, 'Yes, a piece of carpet was stolen.'"


## Idea and Issues to meet on Jan. 16

The Ideas and Issues Committee will hold its first meeting of this semester Monday, January 16 at 6:30 p.m. The meeting will be held in the programming conference room, UC 308, and the primary topic for discussion will be the spring symposium.

## Automobile Dealer Plates-- No Campus Decal

Effective with Spring 1978 vehicle registration the University Police Department will no longer issue a permanent campus decal if the vehicle carries a dealer license plate.

A temporary decal will be issued, however, if an owner who has a permanent decal needs shop work done on his vehicle and the dealer or garage loans him a car with a dealer tag.



**free**

### EAR PIERCING

WITH THE PURCHASE OF EARRINGS FROM *Stephanie's*

YOUR CHOICE

- GOLD \$6<sup>95</sup>
- SILVER \$6<sup>95</sup>
- BIRTHSTONE \$7<sup>95</sup>

OPEN MON.-SAT. 10-9:  
SUNDAYS 1-6

## Stephanie's

IN THE MALL AT MURFREESBORO

**Students--\$5.95 with I.D.**



# Sir PIZZA

## TUESDAY KNIGHT SPECIAL

5:30-9:30 P.M.

1/2

PRICE



Purchase anything for 1/2 Price on the menu with the purchase of another item of equal value or more at regular price!

— Dining Room Service Only —  
Jackson Heights Plaza  
896-2410

1902 East Main  
893-2111

## Next fall's semester to be extended by one week

Next year's fall semester will be extended one week to make it equivalent to the spring semester, according to Jack Carlton, dean of academic affairs.

Awaiting final approval by President M.G. Scarlett, the semester would be extended to Dec. 15 with commencement on the 16th.

Complaints from faculty who could not finish in the shorter fall semester prompted the change,

Carlton said.

According to Carlton, final exams will begin on Saturday, Dec. 9 and continue until Friday, Dec. 15 of next year.

Graduation will be held on the Dec. 16, Carlton said. He said that a preliminary check-out will determine who will graduate with the final check-outs mailed to the student.



Breaking ground continues on the new heating plant to be located behind Old Main. Completion of the building is expected in July, 1978.

## Heating plant construction will continue until July

A \$1,762,000 dollar expansion of MTSU's present heating plant will provide a 50 percent increase of heating capacity, according to Charles Pigg, director of campus planning.

The east side of the present plant will be expanded to 120 feet long by

75 feet wide and 50 feet high.

"We need to expand because we have a hard time holding pressure with the present boilers," Pigg said.

The construction of the annex began Nov. 1, 1977, and is expected to be completed by July, 1979.

Along with the new addition, there will also be two 20,000 gallon oil storage tanks replaced, which will be exclusively coal-fired. The new boilers will be cheaper in fuel costs but higher in operating costs, according to Pigg.

"A study was made by the engineering firm to relocate the existing heating plant. The study concluded that it was just not economically feasible to do so. If the existing plant was relocated, the steam distribution lines and the boilers would have to be relocated. The plant was originally built not anticipating expansion," Pigg added.

"We now have about 24 parking spaces that cannot be used, but after the construction is completed we will gain about eight more spaces," Pigg said.

**25% OFF SALE**  
Wool caps, wool mittens, warm-ups, windbreakers, and selected shoes.  
**Shop 'n Jog**  
Pro Jumpropes Available  
607 S.E. Broad  
Corner Village  
890-3363

## ATTENTION Artists & Designers

If you have the talent to draw and the imagination to **create** your own screen printed fashions, we'll see your drawings will be shown to some of the largest clothing manufacturing companies in the United States.

Sportswear Printing Co. and Prints by Grow Inc. of Allentown are combining forces to bring a whole new concept to the fashion industry. Between our two companies we have over 30 years of experience in the textile printing field.

We are putting together four catalogs from which designers for manufacturing companies will choose prints for their clothing lines.

- (A) Ladies' Fashion Catalog: which would include blouses, dresses, sweaters, pants, etc.
- (B) Men's Fashion Catalog: shirts, button and pull over sweaters, jackets, shorts, swim suits, etc.
- (C) Teen Fashion: boys' and girls' tops and shorts, T-shirts etc.
- (D) Infant & Children: T-shirts, sleepwear, etc.

You as the artist must create not copy screen printed fashions.

All designs submitted must be on an 8" x 10" piece of white sturdy paper stock. It must be drawn exactly the way you wish it to look finished. Example: If it's a T-shirt design draw the shirt, a design for a dress must be drawn on a dress. All designs must be limited to 5 colors. Please do not fold.

Due to the costs of making the catalogs there will be a \$2.00 charge per design entered. All designs must be approved by our designer before being entered in the catalog. Upon having your design approved you will be notified by mail. If for some reason your design is not approved your art work along with your \$2.00 will be returned promptly. Each entry will stay a minimum of 2 years in the catalog. After that it is up to our designers opinion if it will continue.

By now your probably wondering what your going to get from this, well if a company chooses your design you will receive a check for \$100.00. If any artist has 3 designs choosen in 1 year they will receive a bonus check of \$500.00. This also might be your chance to be recognized.

All designs submitted become the property of Sportswear Printing Co. and Prints by Grow Inc. to be used by their salesmen. We guarantee no designs will be copied.

Send \$2.00 along with each design submitted (Do not fold) to:

Sportswear Printing Co.  
848 N. Gilmore St.  
Allentown, Pa. 18103

**SAVE THIS AD**

*The Ear-Ring  
Boutique*  
**Free Ear Piercing  
The Corner Village**

**winter  
Collage  
1978**

**Available at  
Sidelines stands  
Wednesday**



# Sunday lecture will open expressionist artist show

Nationally recognized artist George McNeil will be at MTSU this weekend to open his one-man exhibit at the Art Barn Gallery.

McNeil will give a gallery talk during the opening Sunday, from 2 to 5:30 p.m. and will meet with students and art classes on Monday.

The exhibit is being co-sponsored

by MTSU and the Murfreesboro Art League.

In explaining his work McNeil said, "I am concerned with heightened expressiveness, with charging my paintings with maximum sensateness to make them as vivid and pulsating as possible."

The exhibit will open Sunday and continue through Feb. 17.



Long lines at the cash register faced students as they prepared for the spring semester. [Photo by Robin Rudd]

## CAMPUS CALENDAR

### TUESDAY

Basketball Tournament: Omega Psi Phi, 5-10 p.m., Alumni Memorial Gym

Dance: Alphi Phi Alpha, 9 p.m.-1 a.m., SUB Tennessee Room

### WEDNESDAY

Women's Basketball: MTSU v. University of Mississippi, 7 p.m., Murphy Center

Workshop: Juvenile Justice Service Program, sponsored by Continuing Education, 9 a.m.-5:30 p.m., UC 324

Basketball Tournament: Omega Psi

Phi, 5-10 p.m., Alumni Memorial Gym

### THURSDAY

Luncheon: Faculty/Press, noon, SUB Tennessee Room

Meeting: American Association of University Women, 7 p.m., SUB Dining Room "B"

Concert: Winters Brothers Band and Sea Level, DA auditorium, 8 p.m.

### FRIDAY

Debate Tournament: MTSU Junior Varsity, 12:30

Dance: Kool Club, 9 p.m.-1 a.m., SUB Tennessee Room

## Credit given for singing in group

Anyone wishing to sing in a choral organization can register for one hour's credit in Music 370-Chorus. The MTSU Choir, which meets Mondays, Wednesdays and Fridays at 10 a.m. will perform a Mozart Missa Brevis, a Bach motet and will make a short tour.

The Chamber Choir, formerly the Sacred Harps Singers, meet Tuesday and Thursdays at 3:05 p.m.

They will give a concert Feb. 28 and later make an extended tour. Both groups are conducted by instructor Dale Voelker and membership is by audition only.

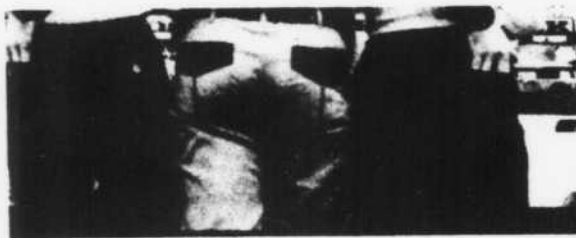
Another chorus, not requiring an audition, will be directed by Cynthia Perkins on Mondays, Wednesdays and Fridays at 10 a.m.

For further information call the Music Department at 898-2469.

## The BEST BOTTOMS IN TOWN...!

Are Covered by:

## WRANGLER JEANS



NOW

ENTIRE STOCK OF JEANS

( Denim  
Corduroy  
Khaki )

All Sizes  
Top Colors

# 25% OFF

## Blue Raider Bookstore

114 N. BAIRD LANE

"More Than A Bookstore"

# WANTED:

*A few men and women to take a college campus for Jesus!*

**Maranatha Christian Center**  
1610 Elrod St. (Behind Wesley Center)

Phone 896-4059

**Meetings Monday and Thursday**  
**Nights at 7:00 p.m.**

# CONCERT

THE SPECIAL EVENTS COMMITTEE  
PRESENTS:



**SEA  
LEVEL**

WITH SPECIAL GUESTS--

**THE  
WINTERS  
BROTHERS  
BAND**



Thursday, Jan. 12, 1978 8:00 p.m.--

Dramatic Arts Auditorium

Tickets: \$5.00 Advance, \$6.00 Day of Show

Available in Room 308 of Univ. Center,

Between 10:00a.m.--3:00p.m.

# Emergency lights, fire alarms to be installed

Fire alarms and emergency lighting facilities should be installed in all dormitories within the next calendar year, according to Archie Sullivan, MTSU safety officer.

The job to install the lighting is in the process of being contracted, he said. Emergency lights will be installed in the stairways of Clement and Gore Halls and in the dorms on the west side of campus. Rutledge and Monohan Halls already have emergency lights, he added.

Fire alarms will be installed in the apartments and in Forrest Hall, Sullivan said, adding that most of the classroom buildings already have alarms.

Even with the addition of fire alarms and emergency lighting, some of the buildings will still not meet the standards set by the Occupational Safety and Health Act (OSHA).

Some of the buildings have "dead-end" corridors which are beyond the allowances set by OSHA, Sullivan said. He said he will recommend they be restructured, but that it will take a large sum of money to do the job.

"To the best of my knowledge, there is not major fire hazard in any

dorm," he said.

Until two or three years ago, safety inspections were conducted by a consulting firm but now are done by the safety officer, Sullivan said.

In Sullivan's monthly safety inspections, he has found that the most frequent violation is the discharge of some fire extinguishers.

Illegal use of a fire extinguisher is a misdemeanor. According to Tennessee law, a misdemeanor is punishable by a fine up to \$1,000 and/or imprisonment in the county jail or workhouse up to one year.

## CITY CAFE

Home Cooked Meals  
Homemade Rolls  
Desserts

STUDENTS

ALWAYS WELCOME

5:00-7:30 107 E. Main

MR. & MRS.

EARNEST WATSON

# VD in Rutherford County rises 21 percent in 1977

Rutherford County showed a 21.2 percent increase in 1977 over 1976 in the number of persons treated for venereal disease, according to Bob Moore of the Rutherford County Health Department.

The figure was included in an overall increase of venereal disease by 10 percent throughout the state. As a result of the increase, Tennessee ranks first in the number of reported venereal disease cases, Moore said.

Normally, in the period immediately following holidays and school breaks, there is an increase

in the number of individuals treated for VD. There is no known reason, however, for the sudden surge of cases in Tennessee, Moore said.

Any sexually active person is encouraged to have a culture test performed whether they display symptoms or not. Many males and almost 80 percent of affected females never show any symptoms.

Free tests and treatment are available to full time students at the campus infirmary, 898-2988. The Rutherford County Health Department, at 893-4422, will also test and treat any individual free of charge.



The

## Clothes Machine

13 S. Public Square

Welcomes Back

MTSU Students With A  
**BACK-TO-SCHOOL  
SALE!**

# ORIENTAL MARKET

1706 N. Tenn. Blvd.

893-1400

## BACK TO SCHOOL SPECIALS

### MILLER BEER

Reg. & Lite

6 pack 120z. Cans & NRS - \$1.98

Case - \$7.90

8 pack 7oz. - \$1.98

Case of 48 - \$10.99

Returnable Bottles -- Case - \$6.99

6 pack Blatz Cans & NR Bottles - \$1.39

Case - \$5.55

6 pack Falstaff NR Bottles - \$1.39

Case - \$5.55

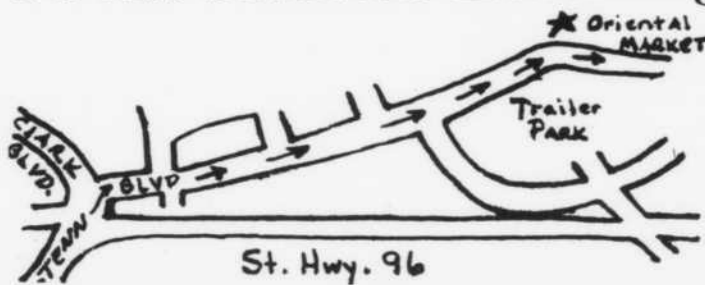
Kegs In Stock At All Times

10% Discount To All Students Excluding Any Specials

Hot Sandwiches

Busch Draft

On Tap



This Sale Good Thru Jan 14th

This coupon good for 10% discount on all merchandise expect specials.

Oriental Market

**OVC basketball:****Conference race to be toughest yet?**

by John Pitts  
Sports Editor

How close can a conference basketball race be?

In 29 years of Ohio Valley Conference basketball play, there have been eight ties for first place, that despite virtual domination of the league by Western Kentucky (16 conference championships in those 29 years).

What is surprising is the company they're keeping in that room at the top: Tech and East Tennessee, the teams that finished at the bottom of the league last season.

Oddly enough, the bottom of the league is occupied by Austin Peay, Murray State and Morehead, the three teams that vied with MTSU for the post-season tournament title in Clarksville last March.

But two games do not a season

make. Tech suffered a classic collapse last season, winning its conference opener and then dropping 13 straight. Peay, Murray, Western Kentucky and Eastern Kentucky all have the personnel to dethrone the Raiders or any other team that lays an early claim to the championship.

Still, there is no question that the first weekend of OVC play was liberally peppered with upsets—of

both the mild and shocking variety.

Nothing can top Middle Tennessee's sweep of so-called "Death Valley." Earle called it "Victory Valley" in his post game comments, and there is little doubt the unprecedented sweep of the Kentucky games temporarily solidifies MTSU's claim to the OVC title.

The Blue Raiders now face a three-game homestand (versus Tech, East Tennessee and Austin Peay) and the outcome of those games, played in front of a very partial home crowd, will determine a lot about MTSU's basketball fortunes.

Three wins would put Middle Tennessee on top by itself before venturing to dangerous Murray, Ky., where the Raiders lost a come-from-behind heartbreaker in the closing seconds last season.

The Raiders will then return for another three game homestand, a pair on the road, a single game in Murphy Center and the clincher...a season-ending road trip against Austin Peay and Western Kentucky.

That last trip might just be the key to MTSU's championship hopes...assuming unforeseen events don't occur. And as upside-down as the league seems to be at this point, there's really no way to know.

And after it's all over, there will be even another hurdle for the OVC champion—the post-season tournament. This year it will be in Bowling Green, stomping grounds of Western Kentucky.

Middle Tennessee broke precedent by beating Austin Peay in the finals of the tourney on the Governor's home court last season. If Western can struggle to a regular season finish anywhere in the top four of the conference, they will almost have to be rated slight favorites.

From there, the tourney champion will enter the NCAA's Mid-East Regional playoff opening round in Knoxville. It might be the OVC's last chance to appear in the playoffs with the help of an automatic bid, which will likely be removed in 1979.

**OVC standings:**

MIDDLE TENNESSEE	2-0
East Tennessee	2-0
Tennessee Tech	2-0
Eastern Kentucky	1-1
Western Kentucky	1-1
Austin Peay	0-2
Murray State	0-2
Morehead	0-2

**sidelines  
\*sports\***

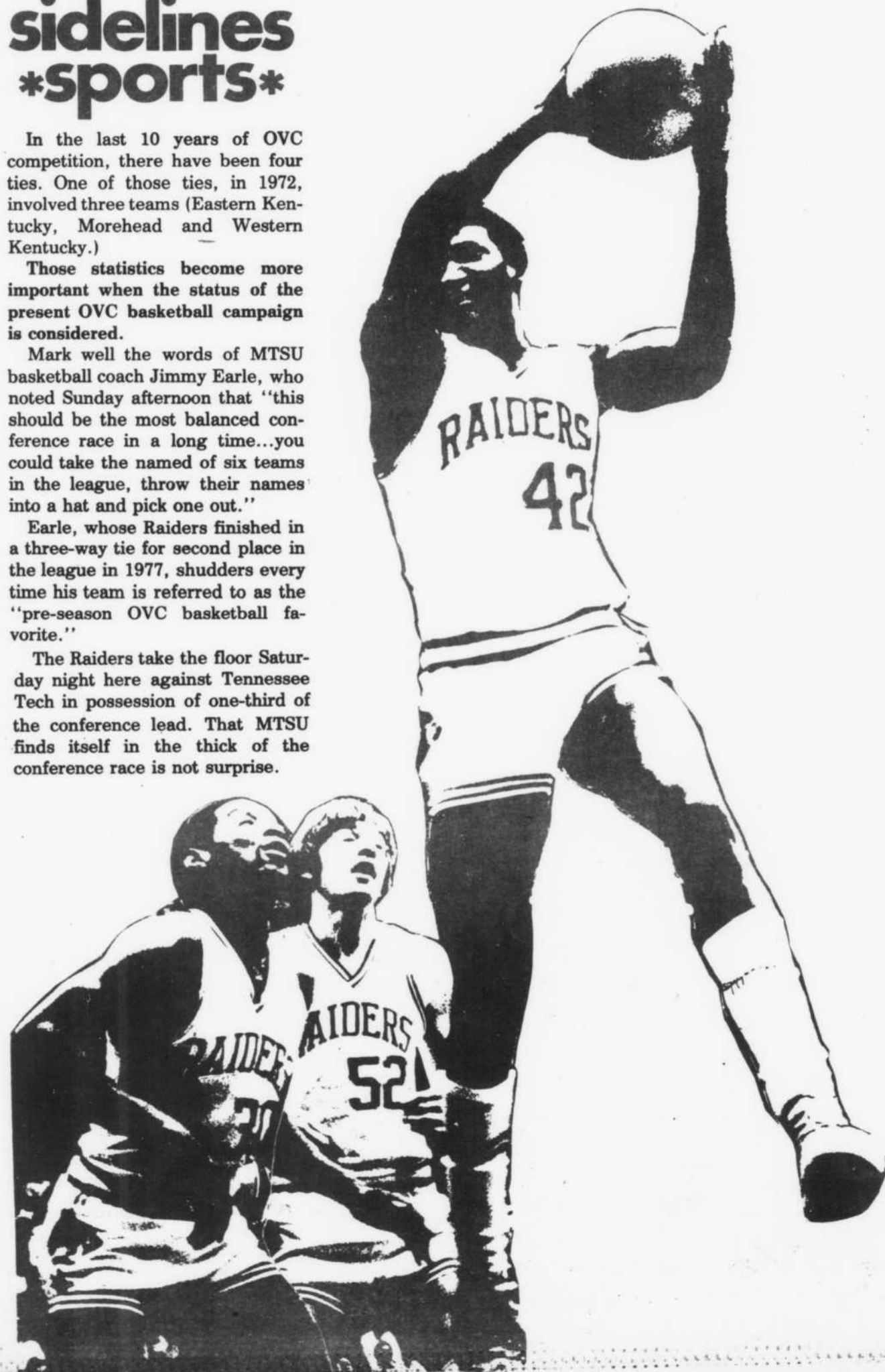
In the last 10 years of OVC competition, there have been four ties. One of those ties, in 1972, involved three teams (Eastern Kentucky, Morehead and Western Kentucky.)

Those statistics become more important when the status of the present OVC basketball campaign is considered.

Mark well the words of MTSU basketball coach Jimmy Earle, who noted Sunday afternoon that "this should be the most balanced conference race in a long time...you could take the named of six teams in the league, throw their names into a hat and pick one out."

Earle, whose Raiders finished in a three-way tie for second place in the league in 1977, shudders every time his team is referred to as the "pre-season OVC basketball favorite."

The Raiders take the floor Saturday night here against Tennessee Tech in possession of one-third of the conference lead. That MTSU finds itself in the thick of the conference race is not surprise.



# Victory Valley?

## Sizzling Raiders outlast Eastern Kentucky, share conference lead

by Chuck Cavalaris

Much like General Sherman's blazing crusade through Georgia during the Civil War, Middle Tennessee's incredible basketball Raiders completed an unprecedented trip through Kentucky Monday night.

All MTSU did (for the first time since this school joined the Ohio Valley Conference in 1952) was escape with a sweep of dreaded "Death Valley" with a spine tingling 93-86 triumph over vastly improved Eastern Kentucky.

Last night's win, coupled with Saturday's 92-59 thrashing of Morehead, ensured the 1977 defending conference tournament champions of a share of the OVC lead going into Saturday's 8 p.m. clash with Tennessee Tech in Murphy Center.

"I'm still in shock," exclaimed Raider coach Jimmy Earle seconds after the hectic finish against Eastern. "When you make this trip and come out with two wins, you can't help but be enthused."

Converting an incredible 25 of 26 foul shots—including 23 straight at one point—and scrapping relentlessly against their bigger hosts, Middle Tennessee fought back a torrid second half charge by Eastern, despite the fact that center Bob Martin fouled out with more than 13 minutes to play.

Raider guard Sleepy Taylor, seemingly quicker than ever before, led the Raider attack with 29 points and swished 13 of 13 from the charity stripe. Junior Greg Joyner drilled in 26 and Julius Brown added 16.

Martin left the contest with 10.

including a goal-shaking, crowd-stunning slam dunk with two minutes left in the first half. Woozy Greg Armstrong "gave as fine a performance as any Middle Tennessee point guard I can remember," said Earle. The junior guard finished with eight points and seven assists.

Rugged Mike Oliver rammed in several rebound buckets and topped EKV with 22. Highly touted freshman LaVell Joiner, a 6-7 hotdog without any mustard, added 18. Two other Colonels cracked double figures.

The game was tied 11 times and on a half-dozen occasions the lead changed hands. Pressured by a rugged Colonel full-court press that was aimed at tiring the flu-stricken Armstrong, Middle Tennessee battled to a 43-39 edge at halftime and never trailed after intermission, although Eastern cut the advantage to one point several times.

After building leads of seven and eight points in the final half, MTSU watched as Eastern closed the gap to a single point each time. But Taylor, working on passes from Joyner and Armstrong, rammed in



Sleepy Taylor

20 of MTSU's final 36 points to protect the win.

### RAIDER NOTES:

•Despite a celebration in the Colonel gym similar to the one at Austin Peay last year, Earle regained his composure and warned about Tennessee Tech. "They have beaten Vanderbilt and Austin Peay. You can throw out the record books." Both teams have 2-0 conference slates.

•Eastern's Joiner, a silky smooth

freshman from the playgrounds of Washington, D.C., failed in a blatant attempt to intimidate Raider Joyner in the first half. The Colonel forward, in one of several "cheap shots," cracked Joyner with an elbow smash to the mouth and moments later pinched Greg on the rear.

"Greg kept his composure under adverse circumstances. He absorbed several cheap shots but retained his poise as well as any one could hope," Earle said after the game.

•A cluster of "Raider Roadies," a hearty band of MTSU followers, sang a victory song prior to Jimmy Earle's postgame radio interview with Monte Hale.

•MTSU staved off Eastern by utilizing the four-corner offense and waiting for Eastern to foul...the OVC record is 24 straight free throws...Leroy Coleman had the lone miss, but finished with four points...Earle switched to his "small" lineup late in the game.

•Due to bad weather (five inches of snow, icy roads), the team will wait and attempt the trip back Wednesday, if possible.

## Defensive goal spurs first OVC win

by Chuck Cavalaris

The magic number for Middle Tennessee's first conference basketball victory at Morehead in 15 years was scribbled hastily on a chalk board in the Raider dressing room moments before the game began.

"Fifty-nine" was circled on the board. Using a tenacious 2-3 zone defense in the second half, MTSU routed the Eagles 72-59 in the initial OVC contest for both teams.

"That was our goal...what we knew we had to do in order to win," junior forward Greg Joyner explained to a cluster of disbelieving sportswriters after the game.

Sleepy Taylor paced the Raider attack with 27. Joyner chipped in 20 and center Bob Martin, plagued for much of the early season with a gimpy knee, added 12 and hauled down a game high 13 rebounds.

"It was truly a team victory," said MTSU coach Jimmy Earle, who was still an assistant at Martin Junior College when MTSU last won at tiny Wetherby Gym in 1962, 72-69.

"We started slowly, but I don't think this team can play any better than it did for the last 30 minutes," Earle continued. "It would be very hard for us to play any better."

Morehead jumped to an early 17-10 lead before Earle sent substitute Julius Brown into the lineup. Brown canned three straight jumpers from the perimeter and MTSU slowly took charge of the game.

With Joyner hitting consistently from the baseline and Martin intimidating inside, MTSU took the lead and managed a 42-34 halftime edge.

Forced into the 2-3 defense due to foul trouble, MTSU outscored Morehead 50-25 in the second half and forced nine turnovers in one eight minute period. Middle Tennessee had 14 turnovers for the game.

"Our players are starting to gel and take a lot of pride in their defense. We executed very well. You love to win, but when you get the kind of effort we did against Morehead, you can't complain... win or lose."

### RAIDER NOTES:

•Playmaker guard Greg Armstrong "did an outstanding job," according to Earle playing 25 minutes despite a bout with the flu. Freshman Robert Culley replaced Armstrong and had just one turnover in his 15 minutes. Because of his illness, Armstrong had to eat vegetable soup while the rest of the squad enjoyed chicken after the game...

•Martin won the respect of those who showed up with a diving attempt to salvage a loose ball in the second half. Martin crashed into a wall 20 feet out-of-bounds...

•The players had planned to view "Close Encounters of the Third Kind" Sunday night, but Earle cancelled that outing after a five-inch snowfall in Lexington, Ky., where the team was staying.



Singing star Rita Moreno [right] offers orange blossoms to Middle Tennessee's Pepita Rodriguez, 1977 MTSU Homecoming queen and one of 51 queens selected to represent the 50 states and the District of Columbia on the Orange Bowl.

# Parsons to resign coaching job; gone to UTEP

by Chuck Cavalaris

Myers Parsons, MTSU offensive line coach since 1975, will resign Jan. 15 to become the receiver coach at the University of Texas at El Paso (UTEP), Sidelines has learned.

An official announcement is expected sometime next week.

Parsons was in Dallas, Tex., Monday on a recruiting mission for UTEP and was unavailable for comment. Parsons' wife, Ann, said the couple plans to move to El Paso next week.

Former Blue Raider offensive coordinator Bobby Baldwin assumed similar duties at UTEP last January and offered Parsons a job coaching pass receivers at the Western Athletic Conference school.

UTEP posted a 2-9 record last season, including a season-ending 63-17 loss to WAC champ Brigham



**Myers Parsons**

Two MTSU football assistants who've left

Young. MTSU head coach Ben Hurt, preparing for his fourth campaign, said he was aware of the impending resignation.

"This is simply an opportunity Myers could not afford to pass up,"



**Bobby Baldwin**

Hurt noted. "The Texas-El Paso offer is a better job, it pays more, he won't have to teach and UTEP is Division I.

"When you are in the coaching business and get a better offer, like

the one Myers got, you have got to take it. We certainly wish Myers well and know UTEP is getting an excellent football coach," Hurt added.

A report in a Murfreesboro newspaper earlier this week claimed other MTSU coaches would join Parsons' decision to leave MTSU. Hurt, however, denied such a situation exists.

"I didn't know anything about somebody else leaving," Hurt explained. "All of the coaches came to me and asked who it was that was leaving. I told them that as far as I knew, no one else was."

Last season, when MTSU posted a 3-8 record, Parsons worked with the offensive line after coaching receivers his two previous years at MTSU.

He was an assistant at Riverdale High School before accepting a position at MTSU.

He was the last of the original offensive coaches who came here with Hurt in 1975. Monte Crook (line) and Baldwin (offensive coordinator) have all left MTSU to accept coaching jobs elsewhere.

Crook resigned last March to coach the offensive line at the University of Tennessee at Martin this season, a Gulf South conference school that dealt MTSU a 27-0 loss last season.

## Tough UTC escapes grapplers' home trap

by Scott Adams

Gordon Connell's wrestlers came within a whisker of whipping a national wrestling powerhouse Monday night—but the edge slipped away.

Middle Tennessee's grapplers, facing a tough UT-Chattanooga squad, trailed early in the meet by dropping the first two individual matches by narrow margins.

Pins by Tommy Smith 134 [lbs.] and Pat Simpson [126 lbs.] vaulted MTSU into the lead. Mike Kuziola [142 lbs.] turned in an impressive 10-6 decision to increase the lead, but UTC tied the score with an 18-6 decision in the 128-pound class.

Kyle Smith (158 lbs.) gave the Raiders a narrow two-point lead with a 16-6 win. A serious injury to the shoulder of MTSU grappler Tony Rowland then helped UTC to a 19-0 win and the seemingly disheartened Raiders dropped the final pair of matches to give UTC a 16-19 overall win. The loss dropped MTSU's season record to 5-6.

During the Christmas holidays, the Raiders fell 39-9 to a tough Indiana State squad. The less-than-hospitable hosts allowed the Blue Raiders just two individual wins, by Kuziola [7-5] and Collins, who pinned Greg Moe in just 51 seconds.

Last week, Mankato State bombed the Raiders 31-14 here at home. MTSU claimed three winners: David James (110 lbs.) in an impressive 19-3 decision, Kuziola by a pin and Smith in a close 6-4 win.

## Grecian Steakhouse

Family Restaurant

**ALL STEAKS-  
1/2 Price**

potatoes, salad, and bread included

**Open 11-11, 7 Days A Week**

**Carry-Out Orders**

896-1354

1002 Memorial Blvd.



# Wilma's fashions

Welcomes Back MTSU Students

**With A Great After-Inventory  
SALE**

Large Selection

of Sweaters

1/2 Price

Famous  
Name  
Brands

Large Selection

of Mix & Match

Coordinates

1/2 Price

**All Coats Reduced**

Now Receiving Spring Jody-T

Dresses And Justops

Now 2 Locations:

Memorial Village

893-2894

Eagleville

274-5006

# New rug for 'Skid Row'

by Chuck Cavalaris

With installation of a modern "tigereye" carpet expected to be completed early today, Games Room manager Georgia Dennis expects to reopen the facility at 9 a.m. Wednesday.

"At least that is what we are shooting for right now," Dennis explained yesterday. "The workmen have to complete putting the pool tables back together and then we have a lot of cleaning up to do."

The Games Room has been closed since the end of the final exams week, when bids were accepted to put down a new carpet.

Also, the billiards tables, which are constructed with three pieces of heavy slate, could not be moved out of the building and had to be disassembled and stored next door at a cost of \$70 per table.

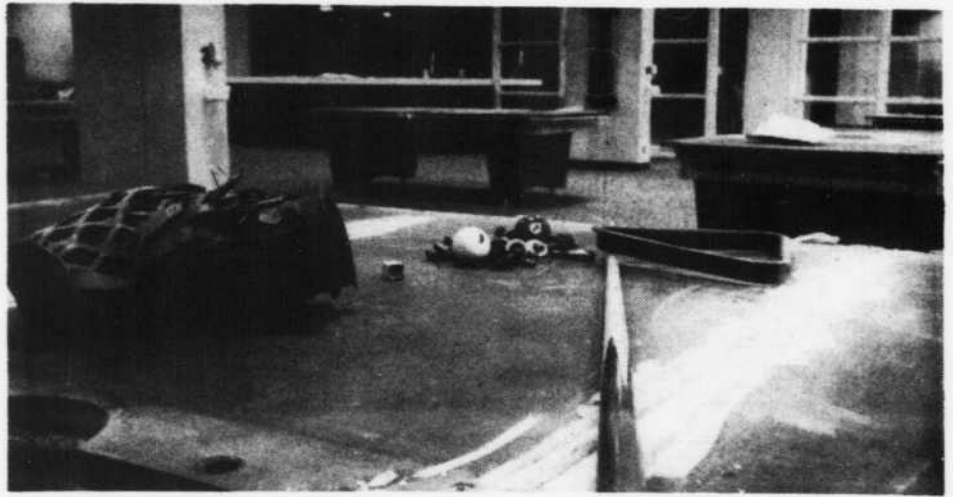
The new carpet was installed, several sources said, after a meeting last semester of several high-ranking state education officials on the third floor of the UC prompted a series of questions about the ragged carpeting.

Last semester, University Center director Dallas Biggers said, "It looks like a Skid Row joint. Unfortunately, we don't expect the money for a new carpet to be appropriated until next September."

"We are extremely pleased with the new carpet," Biggers said yesterday. "It just makes the whole room look so much better. Now, it's a first class facility."

Supplied by a Lewisburg firm, the new carpet is a mixture of gold, orange, brown and black. Unlike the previous carpet, the "tigereye's" major selling point was that, "it would not show dirt or cigarette burns like other ones," Biggers said.

Was he surprised that the money was made available after being told it wouldn't?



A partially dismantled billiards table awaits workmen to put it back together and prepare it for the opening of the newly-carpeted UC Games Room Wednesday.

"Yes, but we just got lucky," Biggers said. "We talked with the administration people, explained our situation, and they revised the budget and came up with the money."

The Games Room will offer the same recreation equipment as last semester (billiards, pinball, table tennis, etc.)

A tournament soccer table has been added, like the ones used in regional and national foosball tournaments.

Spring semester Games Room hours:

Sunday: 3 p.m. to 10 p.m.;  
Monday through Thursday: 9 a.m. to 10 p.m.;  
Friday: 9 a.m. to 9 p.m.;  
Saturday 10 a.m. to 10 p.m.

## scores...

Saturday's scores:

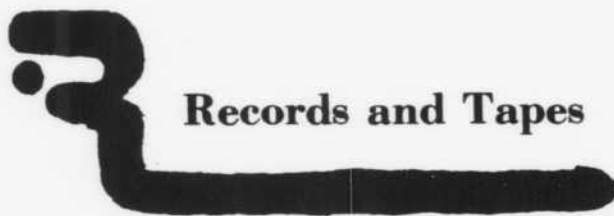
MTSU 92, MO 59  
Tech 58, APSU 57  
ETSU 75, Murray 72  
EKU 85, WKU 79

Monday's scores:

MTSU 93, EKU 86  
Tech 68, Murray 57  
ETSU 66, APSU 58  
WKU 92, MO 82

**The  
Maranatha  
Bookstore**  
  
**Welcomes  
You Back**  
  
**Come Visit Us**  
  
**1507 E. Main St.**

## UNDERGROUND THE WORD FOR RECORDS AND TAPES



Records and Tapes

Ray's Underground

893-3737

509 Memorial Blvd.  
Murfreesboro, Tn.

(Underneath Memorial Package Store)

Mobile Disc Set-Up

(Ask About Our Record Club)

## CENTURY 21

2815 East Main Street  
Murfreesboro, Tn.  
893-9981

### Back-To-School Special

*All Jewlery 30% Off*

OP-Lamps Regular - \$16.00  
Sale - \$12.88

All \$7.98 List Price 8 Tracks  
& Cassettes - \$5.69

*This Sale Ends Jan. 14th*

Open Daily - 11:30am - 7pm

# Non-conference play lifts MTSU to 8-3 record

by John Pitts  
Sports Editor

After falling in its season opener 58-55 to Oral Roberts, Middle Tennessee ran its record to 2-1 before the end of the fall semester.

Since that time, the Blue Raiders stretched that winning streak to five games, suffered a pair of consecutive losses, then grabbed a third place finish in the Senior Bowl tournament to end play for 1977.

After the dawning of the new year, the Raiders picked up a pair of lopsided wins on its home court to finish pre-conference basketball play with an 8-3 record, finest in the league.

## MTSU 79

### Georgia Southwestern 58

Senior center Bob Martin stuck up a personal season-high 25 points to pace the Blue Raider effort. Middle Tennessee shot 62.0 percent from the field to win the shootout.

Teammates Greg Joyner (19 points) and Leroy Coleman (13 points) were also in double figures for the winning Raiders, who led 34-21 at halftime.

## MTSU 61

### Ole Miss 53

Sleepy Taylor's 26-point outburst and a stingy Blue Raider defensive effort keyed a surprising win over Mississippi on their Oxford, Miss.

home court.

MTSU led just 30-28 at halftime after a see-saw struggle, but Ole Miss' shooting cooled in the second half. The Rebels shot only 34.4 percent for the game, while the Blue Raiders ripped the nets at a 51.1 percent clip.

Martin (11), Joyner (10) and point guard Greg Armstrong (10) were other double-figure scorers for the Blue.

## MTSU 74

### UNC-Asheville 62

Still somewhat stunned by the tragic death of the entire Evansville basketball team as it was enroute to Murfreesboro, the Raiders overcame a sluggish first half and a case of the butterfingers in the final minutes to post their fifth straight win.

With Martin less than mobile on an injured knee, Middle Tennessee was led by Taylor with 27 points and Joyner with 22. MTSU blistered the nets for a 61.9 shooting percentage from the field.

## Michigan St. 72

### MTSU 51

Joyner's 20 points couldn't bail MTSU out of a 35-22 halftime deficit, and only a last-minute rally prevented the Blue Raiders from losing by more than the final 21-point margin.

Michigan State's Spartans had four players in double figures, while only Julius Brown (8) came close to contributing another double-figure effort for the Raiders.

## Pepperdine 68

### MTSU 61

California powerhouse Pepperdine rallied from a 36-31 halftime deficit to tip MTSU in the final minutes of first round action in the Senior Bowl basketball tournament.

Joyner paced the Raiders and all scorers with 19 points, while Taylor netted 13 and Martin recovered to score 11.

## MTSU 77

### Bucknell 65

Taylor bagged 27 points to lead the Blue Raiders in snapping their two-game losing streak and to take the Senior Bowl tournament consolation crown.

Joyner (14) and Martin (12) also aided the successful Raider cause.

MTSU had fallen behind 41-30 at halftime, but dramatically rallied to outscore Bucknell 47-24 in the second half.

## MTSU 81

### Culver-Stockton 34

Twelve Blue Raiders bucketed points as the Raiders stormed past badly outmanned Culver-Stockton. Taylor led a balanced attack with 19 points, while freshman guard Cur-

tis Fitts netted 13 and junior forward James Riley netted 12.

CS shot an anemic 20.8 percent from the field, while MTSU managed 54.6 percent.

MTSU stormed to a 40-13 lead and held on in the second half for their finest single game defensive effort since a 49-34 win over the University of the South in 1950-51.

## MTSU 84

### Urbana 48

Martin bagged 15 points, his best performance since injuring that knee, and the Raiders easily endured shoddy last-minute play by reserves to clinch a second straight lopsided win in Murphy Center.

Just about everyone on the MTSU bench got playing time in the hastily-scheduled match, and only Taylor (12) joined Martin in double figures. MTSU shot 52.7 from the field while Urbana managed only 35 percent.

## IM basketball meeting planned

All teams interested in playing intramural basketball this semester should have a representative at the intramural office tonight at 7, according to Joe Ruffner, director of intramurals.

# Freshman. It's still not too late to take Army ROTC at MTSU.

Have you changed your perspective on Army ROTC — now that you've had an opportunity to talk with friends who are enrolled in the course? Maybe you've concluded it does have something to offer you; maybe you should have enrolled when starting your Freshman year.

Since we realize wise people change their mind, we've developed a special program for students like you. You can enroll with your friends in Army ROTC now and catch-up with them in your Sophomore year. Then you'll be ready for the Advanced Course when you become a Junior.

You still make no commitment until you enroll in the Advanced Course. At that time, you'll start earning an extra \$100 per month (for up to 10 months a year).

Visit the Army ROTC office at Forrest Hall so we can discuss the matter in detail.

**Interested? Call or see:**

**Capt. Tom Taylor**

**Forrest Hall**

**898-2470**

**Army ROTC. Learn what it takes to lead.**

# Omega games continue

Team play in the Omega Invitational Tournament for campus fraternity basketball teams began Monday night

Phi Beta Sigma defeated Pi

Kappa Alpha in its first round game; Omega Psi Phi defeated Sigmas and Kappa Sigma defeated Alpha Phi Alpha in the first round and then Kappa Alpha in second

round play.

In other OIT action, Kool Club beat Alpha Gamma Rho and Sigma Alpha Epsilon defeated Sigma Nu and Sigma Chi.

In action scheduled for Tuesday night, Kool Club is to face Kappa Alpha Psi at 7 p.m., while Omega faces Kappa Sigma and the winner of the 7 p.m. clash faces SAE.

Finals for the fourth annual OIT

are scheduled for Wednesday night at 8 p.m. All action takes place in the Alumni Memorial Gym and admission to the games is 50 cents.

The tournament is sponsored by the Omega Psi Phi fraternity and is the traditional preview competition prior to the beginning of regular mens' Intramural basketball season in the spring.

# Cold Remedies

# Sale

 <p style="text-align: center; font-weight: bold; font-size: 1.2em;">KING OF VALUES</p>  <p style="text-align: center;">DELTA FACIAL TISSUES 150's</p> <p style="text-align: center; font-size: 2em; font-weight: bold;">3 FOR 1.00</p>	 <p style="text-align: center;">CONTAC 10's</p> <p style="text-align: center; font-size: 3em; font-weight: bold;">93¢</p> <p style="text-align: center; font-size: 0.8em;">OUR REG. 1.17</p>	<p style="text-align: center;">4-OZ. ADULT or CHILDRENS</p> <p style="text-align: center; font-weight: bold; font-size: 1.2em;">Creomulsion COUGH SYRUP</p> <p style="text-align: center; font-size: 0.8em;">YOUR CHOICE</p> <p style="text-align: center; font-size: 3em; font-weight: bold;">99¢</p> <p style="text-align: center; font-size: 0.8em;">OUR REG. 1.17</p> 
 <p style="text-align: center;">6-OZ. BIG K NIGHTTIME COLD FORMULA</p> <p style="text-align: center; font-size: 3em; font-weight: bold;">97¢</p> <p style="text-align: center; font-size: 0.8em;">OUR REG. 1.27</p>	<p style="text-align: center;">MEN'S HOODED SWEAT SHIRTS</p> <p style="text-align: center;">WITH FRONT ZIPPERS</p> <p style="text-align: center;">BIG K SPECIAL</p>  <p style="text-align: center; font-size: 3em; font-weight: bold;">5.99</p> <p style="text-align: center; font-size: 0.8em;">Reg. 6.88</p>	<p style="text-align: center;">6-OZ. VICKS NYQUIL COLD MEDICINE</p>  <p style="text-align: center; font-size: 3em; font-weight: bold;">1.47</p>
 <p style="text-align: center;">BIG K COLD CAPSULES 12's</p> <p style="text-align: center; font-size: 3em; font-weight: bold;">57¢</p> <p style="text-align: center; font-size: 0.8em;">OUR REG. 77¢</p>	 <p style="text-align: center; font-weight: bold; font-size: 1.2em;">Datril</p> <p style="text-align: center;">NON-ASPIRIN PAIN RELIEVER</p> <p style="text-align: center;">100's</p> <p style="text-align: center; font-size: 3em; font-weight: bold;">99¢</p> <p style="text-align: center; font-size: 0.8em;">OUR REG. 1.77</p>	<p style="text-align: center;">CUPID BLANKETS</p> <p style="text-align: center;">72" x 90" Fits Full or Twin</p>  <p style="text-align: center; font-size: 2em; font-weight: bold;">2/7<sup>00</sup></p> <p style="text-align: center; font-size: 0.8em;">Reg. 4.57</p>

OPEN DAILY 9 - 9 - SUNDAYS 1 - 6

LOCATED IN MEMORIAL VILLAGE - MURFREESBORO

