

TODD LIBRARY UPDATE

Number 18

Middle Tennessee State University

Fall 1998

Library Move to Require Adjustments

The new central library is nearly ready for use. With study seating for 2,500, specialized faculty research studies and graduate student carrels, 350 public access computer terminals, a

pany this article. Library staff will work to meet the needs of the campus community during this period but we ask for your patience and understanding as we work to provide library service in the new facility.



The new library will be ready for use next semester.

center for adaptive technologies, and two instruction rooms, the library will be a central gathering place for learning on campus.

The transition to the new building will require some adjustments in normal operating procedures and schedules. Important dates accom-

pany this article. Library staff will work to meet the needs of the campus community during this period but we ask for your patience and understanding as we work to provide library service in the new facility.

Library Relocation Consultants has been contracted to direct the move of the library collections to the new building. This company has experience with dozens of academic libraries of similar size and the personnel are particularly qualified to carry out a smooth project. Principals from the company have already made two trips to campus to review the collection and the space in the new building. Book and periodical growth rates have been projected and an optimal arrangement for ease of use and maximum space use has been determined. Library Relocation Consultants will return in December to make final arrangements for the move.

The new library will provide the kind of environment for study and research that has long been needed on this campus. It is hoped through the capital campaign, the library will be able to accelerate its efforts to strengthening the collections.

Important Dates

November

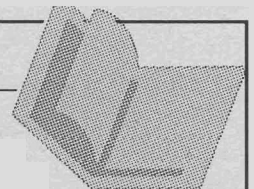
- 20 Last day to request interlibrary loan books
- 30 Last day to request interlibrary loan articles

December

- 1 Last day to receive and process reserve lists for Spring 1999
- 9 Interlibrary Loan closed until January 5
- Bookdrop in new library opens; books should now be returned to new library
- 10 Last day to return books to Todd Library building
- 11 Library closed until January 5. No services available in old or new library building
- 12 Begin general collection book move
- 31 End of general collection move

January

- 5 New library opens



A Tribute to Todd Library

In the height of excitement and anticipation for the move to the new library building, *Update* takes a few moments to look back at the Todd Library and to make a connection to the past.

The Name and the Building

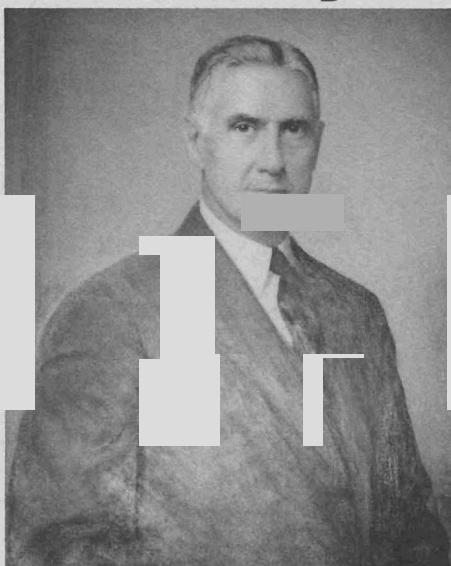
The original building of the Andrew L. Todd Memorial Library was dedicated on March 25, 1958, and named after Andrew Lee Todd (1872-1941), a prominent citizen of Murfreesboro. Through Todd's energetic support and influence, Murfreesboro was chosen as the site for one of the four normal schools created by the General Education Bill of 1909.

The library that carried his name remained much the same for several years. In 1969, an addition was completed to meet the needs of a student body of 10,000 and a collection of 225,000 volumes in a facility of 107,500 gross square feet. The original entrance, which faces Peck Hall, was featured on the cover of the June 1985 issue of *Choice*, a distinguished library magazine. The library outgrew its space and will move into a new building in December 1998.

This *Update* issue contains contributions of memories, stories, and goodbyes from several members of the library staff. Contributions that were not received in time, or that were too long for complete publication, will be included in the web version of this *Update* issue at "http://frank.mtsu.edu/~sfuentes/f98_1.html"

Personal Remembrances

"When I came to Middle Tennessee State University as a student in 1965, I remember how impressed I was with the vastness of the University campus and how awesome the Todd Library seemed to me. I spent many hours in the library building through my college years. Being a commuter student, it became my 'home base' from which I operated. I studied there. I did research and recreational reading there. I 'lived' there between classes. Little did I know that I would return one-and-a-half years after my graduation (right when the new addition was being



Andrew L. Todd

opened) to work at Todd Library, for what has now become 28 and a half years in the same department.

Through the years have come many changes—not the least of which has been automation. I certainly don't miss all the typing, pasting, lettering, and filing that was done by hand. An automated system with an online catalog is a welcome replacement. And I certainly won't miss the crowded conditions that have existed during the last several years and have made it hard to provide the services that a university community of this size needs and deserves.

I will always have fond memories of librarians and library staff who over the past 30-plus years have helped to make Todd Library what it is today by giving of themselves and providing the best service possible with the resources available at the time. There will always be those funny stories to recall of things that could happen 'only in a library.' Although there is some sadness and nostalgia connected with leaving a place where I spent such a large part of my life, I look forward to a new facility that can adequately house the collection and serve student, faculty and staff needs. In fact, now, instead of looking forward to retirement, I am looking forward to spending many more productive years as an active member of the

University Library Staff. Who knows? Maybe I'll be around when an addition to the new building is built!"

— Jo Anne Kelton

"During my 16 years in this building, many changes and events have occurred here. Reorganization of departments, barcoding, and automation will certainly highlight the main changes. However, some of the things that stand out in my mind have little to do with those landmark developments. What I remember most about this building falls into a category that I will call the "lighter side," and on the lighter side, the following comes to mind:

I recall the pizza deliveryman who went hurriedly past the Reference Desk and up the stairs one evening. It was discovered later that a hungry student studying on the second floor had ordered dinner.

I remember when the area now occupied by the online General Periodicals Index was home to the vast card catalog. I recall the story about a desperate user who yanked a main entry card from one of the drawers and took it along to locate a book in the stacks.

I will miss the close proximity of the Collection Management area to other areas such as Reference, Circulation, and the Administrative Office. From my desk, I don't have far to go to get to either one. I will not miss the always dim, noisy, and echoing stairway on the south side of the building near the main meeting room.

Finally, after years of using a "community phone," I know the catalogers will welcome the opportunity for more phone lines in the new library.

— Momolu W. Massagoui

First Impressions, Good-byes and New Expectations

"I thought this was a perfect size and layout for an undergraduate library when I first came in 1975. The whole collection was easy to learn for a beginning librarian."

— *In MacBeth*

"As a relatively new librarian (beginning my second year), it is a bit difficult to sum up my experience in the Todd Library Building. Since starting work at MTSU I have heard much about expectations for the new building. However, I have come to appreciate some features of this older building. My favorite is its centrality to the campus. It is close to several different academic departments and the KUC.



The original entrance to Todd Library faces Peck Hall.

I think that several students appreciate the atmosphere that rests within a building that has functioned as the heart of the campus for several years. This appreciation is not always articulated in a formal way, but it is there. I remember that one student told me, "I'm bummed about the new building. I like studying here, 'cause it's — well, you know— old." I laughed a bit about how he put it, but I think that there is respect at the core of such a quote.

As are many in the library, I am anticipating new technology and conveniences in the new building. Surely our new computer classrooms will be wonderful, as will our new EIC cluster, but I think that I will most eagerly await the automated announcement system. I have heard that in the new library a loud taped message will come on to announce that the library is closing.

In the current building, staff indicates that the library is closing by flicking lights on

and off, and by ringing a terrible, loud, obnoxious bell. Although I think this would entice anyone to leave, most Saturdays at close I find that it does not. One Saturday the staff was getting ready to leave the dark locked library building when someone came upon a student. "Oh, is the library closing?" he asked. "I thought it was a fire alarm." As we showed the student out, we couldn't help wonder why fire wasn't a good reason to stop studying and leave the library."

— *Sandra Elaine Fuentes*

"I, Mary Ann Gilley, gladly leave the faulty, unreliable water fountain in the Acquisitions area of the old Todd Library to the poor unsuspecting new tenants who will occupy this area in the future. Hopefully in the new library, there will be no more surprises such as a bad tasting pill in your mouth and no water."

— *Mary Ann Gilley*

Using Lynx to Access Library Databases

Access to the Internet is available to university students, faculty, and staff through the computer called "frank." Frank is available off campus by dialing in using a computer and modem. To obtain your personal user name and ID, contact the Office of Instructional Technology. Frank does not support graphical Internet browsers such as Netscape or Explorer, but it does support **lynx**, a text-based browser.

The library purchases licenses to several databases and makes them available to authorized MTSU users. Some of these licenses allow access inside the library building only, while others allow access from any computer with an MTSU IP address such as computers connected to the campus network or dial-in accounts on frank. They may not be used off campus directly from a commercial Internet provider such as AOL. You must log in to frank with your authorized user name and ID.

Accessing the databases:

- Log in to frank with your user ID and password.
- At the \$ prompt, type **lynx**. This takes you to the university page.
- Using the arrow up/down keys, highlight the MTSU homepage and press **enter**, then highlight the library homepage and press **enter** OR type the letter **g (go)** and enter the following URL: <http://www.mtsu.edu/~library/> and press enter.
- Using the arrow up/down keys, highlight **Library databases available outside the library** under "**What's New**" and then press **enter**.
- Using the arrow up/down keys, highlight the name of the database you wish to use and press **enter**. Then follow the steps for using the individual database.

Continued on page 5

New Electronic Databases Available from Library

The MTSU library has several new electronic databases available for use by faculty, staff, and students, thanks to the support of Student Technology Fees. **Lexis-Nexis Academic Universe** became available in March. Seventeen additional databases have been added since then, bringing the total number of electronic databases available through the library to 44.

Because of license restrictions, some of the new resources are available on campus only, while others are also accessible from off campus through a frank account using the lynx browser. (See the article elsewhere in this issue for information on how to use lynx.) The databases which have been added recently include the following titles.

ABI/Inform - Indexes and abstracts more than 1,000 journals in business and management, including about 350 English-language titles from outside the U.S. On-campus access only.

ABELL - Annual Bibliography of English Language and Literature - Index to the world's literature dealing with English language, literature, bibliography, and culture (custom, narrative, song, dance, etc.) since 1920. One of Chadwyck-Healey's *Literature OnLine (LION)* databases. Available through frank.

Biography and Genealogy Master Index - Indexes more than 11 million biographical sketches in more than 3,000 volumes of current and retrospective reference books, covering both contemporary and historical figures throughout the world. On-campus access only.

Britannica Online - Easily searchable full text of the standard reference work, plus the *Merriam-Webster's Collegiate Dictionary (10th ed.)*, *Britannica Book of the Year*, and links to web sites carefully chosen by the editors of Britannica. A real goldmine of background information on almost any subject. Available through frank.

College Catalogs Online - Full text of the graduate and undergraduate catalogs of all major U.S. two-year, four-year, graduate, and professional schools and links to their web pages if available. On-campus access only.

Contemporary Authors - Full text of biographical information and bibliographies of more than 90,000 contemporary authors of fiction, general non-fiction, poetry, journalism, drama, motion pictures, television, and other fields. Available through frank.

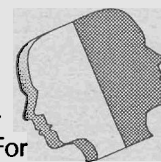
HaPI - Health and PsychoSocial Instruments - Index to the location of information about many different types of test instruments. Available through frank.

Life Sciences Collection - Produced by Cambridge Scientific Abstracts. Offers over 1.7 million citations and abstracts to the world's literature in 20 life science disciplines. This is an invaluable resource for people seeking interdisciplinary perspectives. Areas covered include cell and molecular biology, neurosciences, biochemistry, biotechnology, entomology, ecology, genetics, immunology, microbiology, oncogenes, human genome, virology, and AIDS research as well as many aspects of agriculture and veterinary science. Available through frank.

LION Master Index - Keyword index to a large collection of literary works in the *Literature OnLine* databases. These include such special areas as early English poetry, fiction, and drama; early African-American poetry; Shakespeare; American poetry; etc. Since we do not subscribe to the full text LION databases, this index is useful mainly for locating and checking bibliographic information and for the links to literature web pages which the subscription also provides. Available through frank.



PsycINFO - Indexes and abstracts professional literature in psychology and related fields since 1984. For several years the library has had a subscription to the CD-ROM version of the smaller database called PsycLIT which was available only in the library building. Now the larger database will be available not only in the library but also from any computer connected to the campus network and from off campus through a frank account.



Social Work Abstracts - Indexes and abstracts of about 450 journals in all areas of the profession, including theory and practice, areas of service, social issues and social problems from 1977 to the present. Also includes *The Register of Clinical Social Workers* which is a directory listing of social workers in the United States. Available through frank.

sociofile - Indexes international findings in theoretical and applied sociology, social science, and policy science. Combines the print publications "Sociological Abstracts" and "Social Planning Policy and Development Abstracts" (SOPODA). Sociofile indexes journal articles, dissertations, books and book chapters, and association paper abstracts since 1974. Available through frank.

SportDiscus - The standard index of articles, books, conference proceedings, dissertations and theses, and papers covering all facets of physical education, sports medicine, exercise, coaching, and related subjects since 1975. Available through frank.

Tennessee Newsstand - Index and searchable text of *The Tennessean* (Nashville), *The Commercial Appeal* (Memphis), *The News Sentinel* (Knoxville), and selective business coverage from other regional publications from 1995 to the present. On-campus access only.

Women's Resources International - Includes 10 databases indexing more than 204,000 records from the following 10 different women's studies databases:

Women Studies Abstracts (1984-present)

Women's Studies Database (1972-present) drawn from 125 journals worldwide

Women Studies Librarian—four files from the University of Wisconsin:

New Books on Women and Feminism (1987-present)

WAVE: Women's Audiovisuals in English (1985-90)

Women, Race, and Ethnicity: A Bibliography (1970-90)

The History of Women and Science, Health, and Technology: A Bibliographic Guide to the Professions and the Disciplines (1970-95 - selective coverage)

European Women from the Renaissance to Yesterday: A Bibliography (1610 - present)

POPLINE Subset on Women (1964 and earlier-present) Includes 39,600 abstracts. Part of the well-respected POPLINE database produced by the National Library of Medicine. With an emphasis on the health and social concerns of women in the developing world, this subset includes many journals, reports, books, and published and unpublished papers.

Women of Color and Southern Women: A Bibliography of Social Science Research (1975- 1995) is produced by the Research Clearinghouse on Women of Color and Southern Women at the University of Memphis and provides more than 7,600 citations on 18 different ethnic groups.



Women's Health and Development: An Annotated Bibliography (1995) provides 200 records drawn mainly from English-language journals and other holdings of the World Health Organization library in Geneva.

Our subscription to *Women's Resources International* also entitles us to free access to the *Child Abuse and Neglect Documents* from NISC.

Other new databases which are available on the local area network in the Electronic Information Center in the library building only are the *Oxford English Dictionary* and *American Business Disc*.

American Business

Disc - Directory of over 10 million U.S. companies and business organizations. Can be searched by business name, location, SIC code, type of business, sales, number of employees, and more. Other information for each entry includes address, phone number, key executives, and more.



Oxford English Dictionary - Searchable electronic version of this standard resource for information on definitions, etymology, usage, quotations, and history of virtually every word in the English language.

With the subscriptions already in place, plus the addition of these databases, funded by Student Technology Fees, the university community has access to electronic resources covering almost every academic discipline.

Using

(continued from page 3)

Quick Guide to Using Lynx

Use the keyboard for performing actions in lynx. The mouse will not work.

Use the following keys:

g (go) to go to a user-specified URL.

Arrow up/down key to move around on a screen.

Enter or **arrow right** to follow a link.

Arrow left to go back or return from a link.

Space bar or **PgDn** or **+** to scroll down to the next screen of the document.

- or **PgUp** to scroll up to the previous page of the document.

p (print) to see options including print to a local file (your frank account), mail to an Internet address, print to the screen, or print to an attached printer.

/ <string> or **s <string>** to search the document for occurrences of a *Astring@* and display the portion of the file containing that string. Use **n** (next) to find and display the next occurrence of the *Astring @*.

m (main) to return to the main menu where you first started.

? For help using lynx.

a (add) to add the current link to your bookmark page.

v (view) a list of your bookmarks.

Backspace or **delete** to display a list of links that have already been visited.

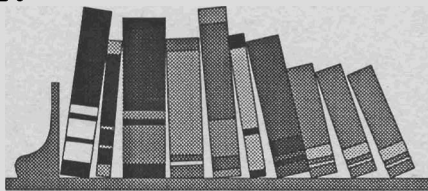
= to display information on the document currently displayed, including the link.

**** to display the html source of the current document. **** again re-renders the document.

q (quit) to quit lynx. Then be sure to type exit to log out of frank.

Check on our move status!

Go to Library Homepage at <http://www.mtsu.edu/~library>
Click on New Library for updated information on the move to the new building.



Campus Hit by Spring Storm

The MTSU campus was not spared by the severe thunderstorm that moved through Murfreesboro on May 21, 1998, knocking down trees and causing power outages.

This huge maple near Todd Library's old entrance, was one of many trees on campus that was uprooted by the violent winds. Fortunately, the old maple fell away from the library, causing no damage to the building.



Todd Library Update

Editor: William Black

Contributors to this issue:

William Black, Lynn Flanagan, Sandra Fuentes,
In MacBeth, Momolu Massaquoi

AA088-1098

A Tennessee Board of Regents Institution

MTSU is an equal opportunity, non-racially identifiable, educational institution that does not discriminate against individuals with disabilities.