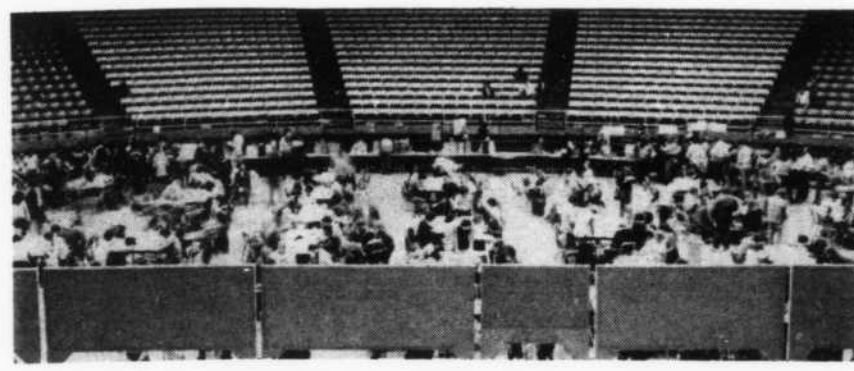




## Raptures of registration remembered



# MIDDLE TENNESSEE STATE UNIVERSITY SIDELINES

### Weather

Fair and cold today with a high in the upper 30s. Low tonight in the mid-teens. Partly cloudy and warmer tomorrow with a high near 40.

### Inside

Raiders pop Zips pg. 5  
Stonehenge on Poland pg. 3  
Jan. events preview pg. 4  
Dec. sports wrap-up pg. 6

Volume 55 Number 27

Friday, January 8 1982

## Rape suspect at large

By PHIL WILLIAMS  
News Editor

A former state prison inmate, one of two ex-convicts charged with the Dec. 19 rapes of two MTSU coeds, continues to remain at large while his captured accomplice awaits bond in the Rutherford County Jail.

Marvis Sweat, 28, of Lebanon, is being held in lieu of a \$20,000 bond while 22-year-old David Shannon, also of Lebanon, is being sought for the crimes.

**THE FIRST** rape occurred at approximately 5:30 p.m. in a third floor office of the Kirksey Old Main building. The second incident took place 15 to 20 minutes later outside the nearby

## Police Chief Bass offers rape prevention advice

By PHIL WILLIAMS  
News Editor

The best way to prevent rape is to avoid being alone in vulnerable situations, University Police Chief John Bass said yesterday.

"I guess if you wanted me to sum up all the prevention techniques, I would say it like that," he added.

**BASS ELABORATED**, offering the following specific suggestions:

- Avoid dark areas and parking lots.

"The campus is pretty well lighted," Bass commented. "You can go across campus in the light providing you take a few more

steps and don't take shortcuts through darkened areas."

- Avoid working alone in buildings.

Edwin S. Voorhies, dean of the school of basic and applied sciences, reiterated this precaution in a memo to his colleagues.

**VOORHIES** advised female workers to keep doors locked and not to admit strangers if it became necessary to work before or after normal working hours. He went on to suggest that arrangements be made for someone else to be in the area.

- Make sure you lock your automobile to prevent anyone from hiding inside.

- Have keys in hand as you approach your vehicle.

Murfreesboro Little Theatre on Ewing Boulevard, according to University Police Chief John Bass.

In the on-campus crime, two men wearing stockings approached the 20-year-old student worker and asked if she had any money, said Bass.

He said that after the victim stated she had no money, the assailants raped her at knifepoint.

**BASS SAID** he did not know if the rapes could have been prevented if the victim had had money to give the intruders.

"I don't think they [the intruders] even knew themselves," he added.

Minutes later two men attempted to rob a 23-year-old student as she was leaving the off-campus store. When she refused to relinquish her money, the aggressors put her into the bushes and sexually assaulted her.

**POLICE WERE** called to the scene by a pass-by who saw the commotion, according to Bass.

Upon arrival at the scene Murfreesboro Detective Sam Branch pursued the rapists.

### 'End of an era'

## 'Voice of Raiders' stilled; legend remains

Funeral services were held Monday for Monte Hale, local radio broadcaster and the longtime "voice" of the Middle Tennessee State University Blue Raider athletic teams.

Hale, 42, had fought an ongoing battle with cancer since 1966, and finally lost the battle Saturday morning at Rutherford Hospital.

**SERVICES WERE** conducted at Southwest Baptist Church. Interment was at Vergennes Cemetery. Jennings and Ayers Funeral Home supervised the arrangements.

Hale first aired in

Central High School Tigers in just a short time.

In the early 1970's, Hale bought a part ownership of WGNS radio here in Murfreesboro, the station on which his broadcasts had aired. A few years later, however, he sought sole ownership of a station and purchased WMTS AM-FM. It was on that station in 1978 that he became the first play-by-play announcer for the new Nashville Sounds minor league baseball franchise.

## Winterfrat rush to begin Jan. 11

By MINDY TA  
Copy Editor

Winter fraternity rush is set to begin Monday with the 10 fraternities having functions on that night for students with rush cards.

Students who did not purchase rush cards at registration may purchase one for \$5 Jan. 11, 12, 13 and 21, between the hours of 10 a.m. to 2 p.m. in front of Dean Paul Cull's office in the University Center.

**DELTA TAU** Delta, Alpha Tau Omega and Sigma Nu have functions on Monday. Alpha Alpha, Kappa Sigma and Alpha Epsilon have functions Tuesday, Jan. 12, and Sigma Epsilon, Sigma Chi, Gamma Rho and Pi Kappa Alpha are scheduled for Jan. 13.

Thursday, Jan. 14, is scheduled as a dry night. Fraternities are allowed to have functions on a dry night, but

beer is to be served.

Alpha Gamma Rho, Sigma Nu, Alpha Tau Omega and Delta Tau Delta have a wet night on Jan. 15, while all other fraternities have dry functions on that night. On Jan. 16, Kappa Alpha, Sigma Alpha Epsilon, Kappa Sigma, Sigma Phi Epsilon, Sigma Chi and Pi Kappa Alpha have their wet night and all others have dry functions.

**SMOKERS START** on Monday, Jan. 18 and run through Jan. 21. At a smoker, no beer is served and information about the fraternity, such as costs, pledge program requirements and usually a guest speaker, is furnished.

**ATO, Kappa Sig and Sig Ep** have smokers on Jan. 18, with ATO beginning at 5:30 p.m., Kappa Sig at 7 p.m. and Sig Ep at 8:30 p.m. On Jan. 19, the Deltas will start at 5:30 p.m., Sigma Nu at 7 p.m. and Sigma Chi at 8:30 p.m. The Pikes start

out Jan. 20 with a smoker at 5:30 p.m., AGR follows at 7 p.m. and SAE winds up the night at 8:30 p.m. Kappa Alpha finishes out the smokers on Jan. 21 when it hosts the only scheduled event of the evening.

Jan. 22 is a wet night for all fraternities and is followed on Jan. 23 by preference parties. A preference party is designed to let rushees single out one or two fraternities as preferences and attend those parties. Rushees are allowed to attend any parties they wish.

**BIDS MAY** be picked up in Cantrell's office on Jan. 26, from noon to 4 p.m. When a rushee receives a bid, he is invited to go through that fraternity's pledge program.

Week night parties will end at 1 a.m. and weekend parties will end at 2 a.m. Ladies are welcome at all functions except dry nights, smokers and preference parties.

bag from the handball courts area.

**"THERE ARE** plenty of opportunities for thefts in Murphy Center," according to Bass.

Non-university persons are regularly found inside the facility, he said.

"You chase them out one door and they come back in another," Bass added.

Despite the arrest activity during exam week, Bass stated the Christmas break was relatively uneventful in terms of criminal activity.

**HE CONTINUED** his broadcasts of MTSU football and basketball until early 1981, even after he sold the station.

Hale discovered in 1966 that he had cancer, after it was learned that an inflammation of his tongue he had had since high school was malignant.

### related story pg. 5

It looked as if his broadcasting career might have ended after half of his tongue was removed in surgery, but after months of rehabilitation, he was behind the microphone again in the fall of 1967. Subsequent operations, however, were required.

Hale sold his Murfreesboro station in 1981. However he was able to continue in his role as the MTSU sportscaster although surgery forced him to miss several games in the 1980-81 season.

After several other surgeries, Hale announced last summer he would be unable to continue as the voice of the Blue Raiders.

**LAST FALL**, Hale became the initial non-graduate or non-athlete to be inducted into the MTSU Blue Raider Sports Hall of Fame.

Hale was a member of the Southwest Baptist Church.

He is survived by his wife, Mrs. Bernice Huffman Hale; two sons, Monte Hale, Jr. and Craig Hale; and his parents, Carlos and Dorcas Abbott Hale, of Chauncey, W. Va.

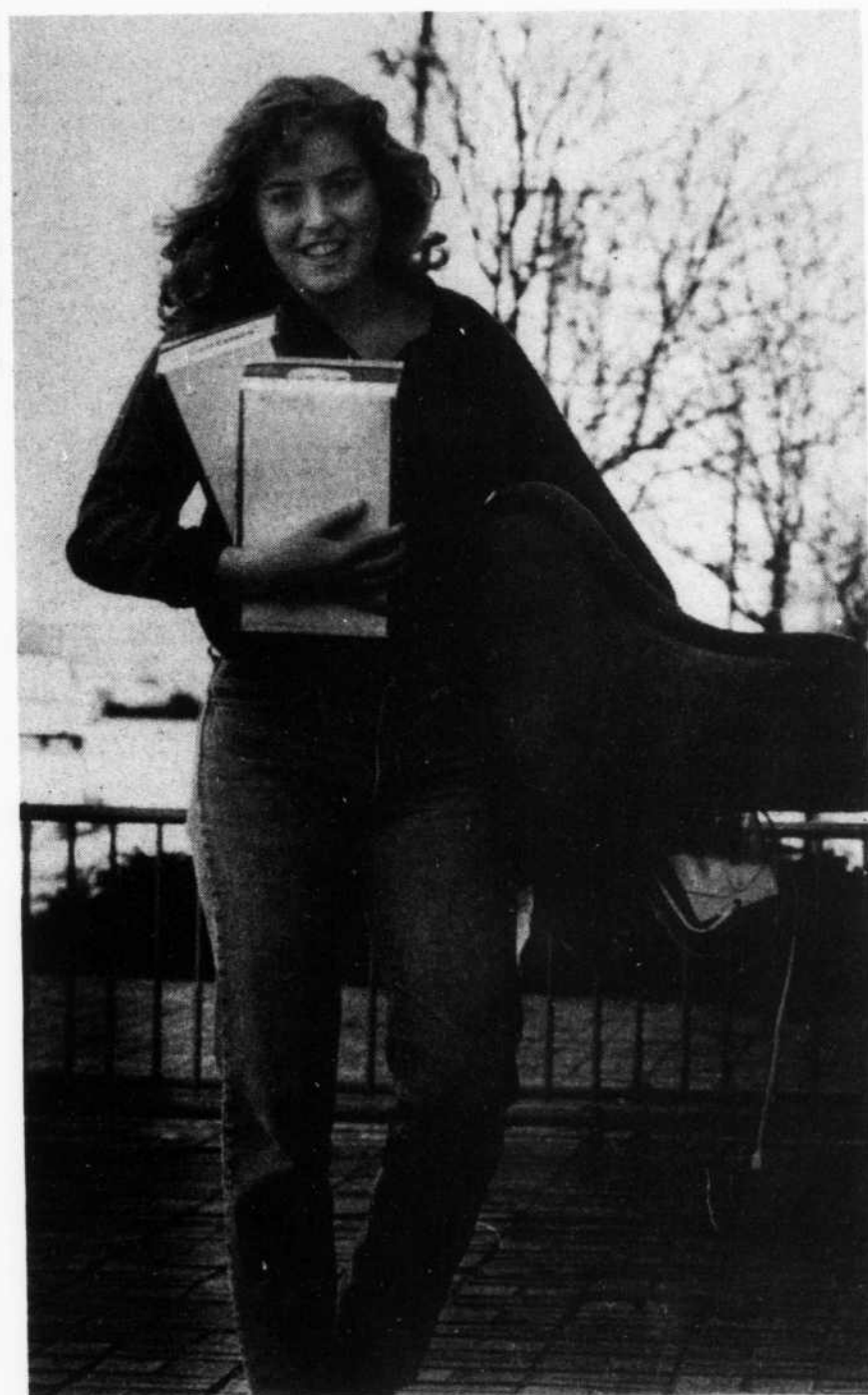


Photo by Greg Campbell

## Here we go again...

Freshman Cristi Lay, from Lawrenceburg, makes the regular beginning-of-the-semester transfer of property back to her room.



# Campus Capsule

**THE OUTDOOR CLUB** invites anyone interested in rock climbing, hiking, cross-country skiing, bicycling, camping, canoeing, orienteering, photography and backpacking to join them.

The club meets every second Tuesday. The first meeting of 1982 will be Tuesday, Jan. 12, at 7 p.m. in the Alumni Memorial Gym first aid room.

**THE DEPARTMENT OF SPEECH AND THEATRE** will hold auditions for the Jack Heifner production of "Vanities" Monday, Jan. 11, and Tuesday, Jan. 12, at 7 p.m. in the D.A. auditorium.

The auditions are open to university students. Those wishing to try out should bring two contrasting one-minute monologues and a short cheer.

**CAMPUS RECREATION** has three competitions lined up for campus organizations and other groups for Jan. 13-18.

A wiffleball competition on Jan. 13, an invitational volleyball tournament on Jan. 16 and a basketball competition on Jan. 18 are on the roster.

Sign up must be before 4:30 p.m., Jan. 11, in the Campus Recreation office, Room 203 of Alumni Memorial Gym.

**STUDENTS WHO WISH** to keep their name, address, phonenummer or classification from being given out by the Student Information Center should send a written request to the Office of Student Information and Minority Affairs, U.C. Room 122.

The office should be contacted as soon as possible. A new request must be made each semester.

## THEC releases study today

By CLAUDIA ROBINSON  
Education Editor

The Tennessee Higher Education Commission will release a study of the supply and demand of teachers in Tennessee during its meeting today at Memphis State University.

The major observations of the THEC staff included in the study are:

- There is an oversupply of teachers in the state.
- The number of education graduates from state public institutions is decreasing.
- Because of a decline of new teachers entering the system, curricular changes in teacher-

education programs and adjustments in certification applying only to future teachers "will not have a significant impact upon elementary and secondary teaching for a number of years."

**THE STUDY** also found that in 1981 approximately half of the unfilled teaching positions state-wide and three-fourths in urban areas were in middle Tennessee.

An undersupply of math and other specialized teachers also appeared in some counties.

However the study's findings will not bring about changes in the MTSU teacher education

program, according to Dean of Education Harry Hodge, who served on the committee responsible for the report.

"We are in the process of changing elementary education, but that is because of other reasons," Hodge said.

**CHANGES** are being made because requirements for elementary education certification have changed drastically. An accreditation review will be conducted in two years and the State Board of Education is requiring students to take the California Achievement Test before entering the program and the National Teachers' Examination before being certified.

THEC will also be making recommendations on programs being studied as unnecessarily duplicative or low-producing, including two MTSU programs.

The undergraduate programs in distributive education and industrial education will be recommended for termination at today's meeting, according to Robert Jones, assistant vice president for academic affairs.

The final decision for termination, however, must come from the State Board of Regents.

Budget revisions for the current fiscal year also will be reviewed at the meeting.

student financial aid and a general trend in Tennessee of lower enrollments, he added.

Spring registration, at 9154, is up 190 from last spring, Gillespie said, because scholarship athletes registered at the regular time instead of registering late as they usually do.

"I don't know yet why registration did not go down by the 350 students we expected because I don't have the figures yet," he added.

The figures will be available next week.

## Enrollment increases

By CLAUDIA ROBINSON  
Education Editor

The number of students registered for spring semester did not decline from last spring as was expected, according to Dean of Admissions Cliff Gillespie.

"We expected spring to be down about two to three percent because of the drop last fall, but right now it's holding its own," Gillespie said.

Registration last fall was down 400 students, or three percent, because of the new retention standards, changes in

## 230 to 275 dorm rooms still empty

By CLAUDIA ROBINSON  
Education Editor

Approximately 230 to 275 dorm rooms will be empty this semester, according to Housing Director David Bragg.

Most of the 180 to 200 rooms in women's dorms were already empty because students who reserved them for last fall did not enroll at MTSU, Bragg said.

**A PROPOSED** policy to require a nonrefundable prepayment instead of a deposit to reserve a room would help avoid a repeat of this situation, he commented.

An increase in empty rooms in men's dorms was caused by 40 flunk-outs and others who did not return this semester, Bragg said.

**CONTRARY** to what has been done in the past, housing contracts aren't being cancelled this semester because the school cannot afford to have so many empty beds, Bragg pointed out.

Some students have been allowed to break their contracts, however, by appealing to President Sam Ingram or Robert La Lance, vice president of student affairs but only for medical or financial reasons, Bragg added.

## 634 graduate in Dec.

More than six hundred graduates received their diplomas on Dec. 19 during the last MTSU commencement exercise of 1981.

University President Sam Ingram presided over the mid-day ceremonies in Murphy Center. Athas Clay Pullias, president emeritus of David Lipscomb College, spoke to the departing students on beginning money management in the home.

Of the 634 people who went through the graduation line, 499 were given bachelor's degrees,

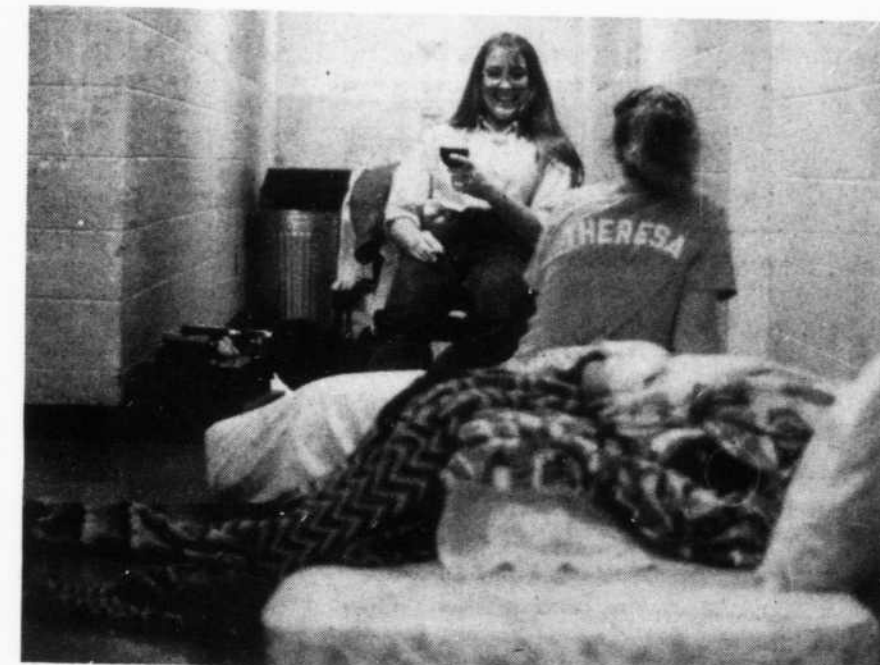


Photo by Lesley Collins

## Cleaning can be fun!

Freshmen Edie Bastian (left) and Teresa Beard relax in the dorm hall awaiting the arrival of a vacuum cleaner for a once-a-semester carpet cleaning.

## Job offers at record high

MTSU graduates of the 1980-81 classes received the largest number of job offers in the school's history, the Placement and Student Employment Center announced recently.

National accounting firms, computer companies, major retailing and manufacturing firms, service organizations, hospitals and school systems made a total of 250 visits to the campus and increased the

volume of job offers 50 percent over 1980 figures.

**THE AVERAGE** annual salary jumped from \$12,647 to \$13,987, 10 percent over the 1980 figure.

Students submitted 1,406 applications for 520 part-time jobs. The Center placed nearly 325 students in those positions. Opreland, U.S.A. was not included in this report.

Career Placement and Student Employment assisted 2,873 applicants during the year. The number of sets of credentials furnished by the office for students and alumni increased to a total of 2,812, an increase of 372 sets.

## New classes bring alternatives

By ANTHONY PILLOW  
Staff Writer

For the more adventuresome students on campus, the spring semester has a few added surprises in the way of new classes.

One of the new courses being offered is ethics and mass communications. This course will stress examination of ethical concerns of mass media. It is designed to encourage one to think about the consequences of his actions as they relate to his peers, his employer and the general public. Included in the course are case studies, written reports and class participations.

Not interested in mass communications? Well, a new psychology class is also being offered this semester. This course on test anxiety is designed for people who have problems taking tests. Participants will learn relaxation techniques and other procedures which help reduce worry about examinations.

In addition, two new courses have been added to the English curriculum on the sophomore level. The courses are entitled "the rogue" and "detective fiction." They are considered to be more specialized than the 221 literature class.

The detective fiction class will consist of writing papers on detective stories as they evolve during a 150-year period. Late 19th century writers as well as contemporary writers, such as Agatha Christie and Mary Stewart, will be studied.

## Campus Pub

Welcome Back Party  
Wednesday Night  
Wan the Tuesday issue of Sidelines for details  
**HAPPY HOUR 5-9**  
Campus Pub Special-Burger and Fries \$2.25  
White Beans and Cornbread-99¢  
Nachos and Cheese-99¢

11 a.m. to Midnight  
Mon.-Fri.



4 p.m. to 11 p.m.  
Saturday

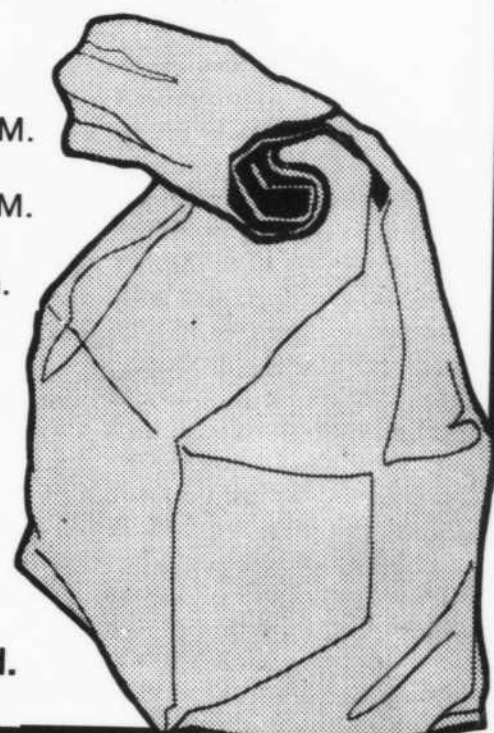
## The end of the Brown Bag Blues

Break up the routine...have a pizza for lunch! Domino's Pizza will deliver to homes, businesses, and campus within 30 minutes at no additional charge.

Our drivers carry less than \$10.  
Limited delivery area.



**NEW HOURS**  
10:00 A.M. to 1:00 A.M.  
Mon.-Thurs.  
11:00 A.M. to 2:00 A.M.  
Fri.-Sat.  
11:00 to 1 A.M. Sun.



1301 Memorial Blvd.  
890-2602

## MOTIONS

"The place to be"  
1916 East Main  
next to  
East Main Market

Relaxed Atmosphere  
Group Party Rates

MOTIONS  
1916 E. Main St.

Sale Begins Wed., Jan. 6th



**10 DAY GAMBLERS Sale!**

WED. 5%	TUES. 30%
THURS. 10%	WED. 35%
FRI. 15%	THURS. 40%
SAT. 20%	FRI. 45%
MON. 25%	SAT. 50%

★ EVERYTHING IN THE STORE  
★ DON'T WAIT... IT COULD GO TODAY.  
★ UP TO 50% SAVINGS!  
★ GET LUCKY! THERE'S A LITTLE GAMBLER IN ALL OF US!  
ALL SALES ARE FINAL



For the Best Names in the Games  
Mercury Plaza Shopping Center • Murfreesboro, Tennessee 37130  
615/890-2160



# MIDDLE TENNESSEE STATE UNIVERSITY SIDELINES

Volume 55 Number 27

Friday, January 8, 1982

## On this date

On this date in 1776, radical writer Tom Paine issued his famous pamphlet *Common Sense*. "Society in every state is a blessing, but government, even in its best state, is but a necessary evil; in its worst state, an intolerable one," he wrote. "When we are planning for posterity," he added, "we ought to remember that virtue is not hereditary."

SIDELINES is published every Tuesday and Friday by the students of Middle Tennessee State University. Editorials and columns reflect the opinions of their authors and are not those of the MTSU administration, faculty or staff.

Editor	David Jarrard
News Editor	Phil Williams
Editorial Editor	Michael Tompkins
Copy Editor	Janene Gupton
Copy Editor	Mindy Tate
Sports Editor	Bob Gary
Photo Editor	Greg Campbell
Production Manager	Elizabeth Porter
Advertising Manager	Mark Carter
Faculty Adviser	David Badger

## MTSU's inferiority complex belies university potential

Middle Tennessee State University has to be one of the few major schools in the South with an inferiority complex as big as its campus is beautiful.

For some reason, whether it be from student apathy or lack of information or both, there tends to be a strong undercurrent throughout the student body that this school is "somewhat less" than Tennessee's other "major" universities.

Recently, while mulling over the fact that a used biology text costs \$18, I overheard two coeds discussing their Christmas vacations.

"Did you visit UT while you were in Knoxville?" asked one.

"Yeah," responded the other.

"Well, do you think you'll be going there next year? It's such a bigger place...you know you'll get better schooling."

"You really think so?"

"You just gotta."

The popular belief that "you just gotta" get a better education at a school with a larger population (or one based in a large city) is false.

Students must be overlooking a multiplicity of challenges offered here at MTSU to feel they are not obtaining the quality education they would receive at a so-called "big" school.

MTSU offers a wealth of courses and

programs that have consistently received national recognition as being unique and superior in quality.

The nationally ranked forensics team, the successful equestrian team, our award-winning flying squad, the aerospace school (named "Best Aerospace School of the Decade" by the Civil Air Patrol and the U.S. Air Force), the unique Historical Preservation Foundation that brings students from all over the country to Murfreesboro, the recording industry management sequence in mass communications, MTSU's giant photography lab—all offer unparalleled challenges to the students willing to take advantage of them.

MTSU's inferiority complex comes from students who haven't looked into what is available at the school—or from those too lazy to meet the challenges they know about.

During my term as editor in chief of *Sidelines*, I will direct the paper's focus on the students, faculty, administrators and staff of MTSU—and their achievements—for better or for worse. I feel this will help bring about an awakening, or self-realization, among the MTSU population about the opportunities offered here.

Remember, you only get as much out of something as you put into it.



"AND AS HE LOOKED BACK ON HIS FIRST YEAR IN OFFICE, THE PRESIDENT SAW THAT IT WAS GOOD."

## Poland crisis inevitable

By MICHAEL TOMPKINS

Editorial Editor

Concerning the martial-law crackdown in Poland which occurred during our just completed Christmas holidays, several thoughts come readily to mind.

First and foremost is that the crackdown was unavoidable. Soviet-bloc governments frown on any social or political movement which goes against the grain of the established status quo. The Soviet Union determines the status quo and governments that are puppets of Moscow are expected to maintain it. The crackdown on the worker's rebellion in Poland is ironic because such a grass roots uprising is the backbone of the Marxist-Leninist theory of communism. This shows the distance that has grown between communist theory and its actual practice.

SECONDLY, IT IS surprising that the crackdown and resulting bloodshed has not worsened, i.e. Soviet intervention. The Poles are a religious group with strong moral and social ties. Initially observers questioned whether the Polish army would fire on its own brethren. Mass defections to the workers' side were considered possible. Instead the crackdown has been swift and effective, the backbone if not the spirit of Solidarity being broken.

There are several apparent reasons. Polish workers have few guns, and sticks and tire irons simply don't go very far against Russian guns and tanks. Severe prison sentences have been leveled against resisters and strike leaders.

The Catholic church, a strong voice for social reform in Poland, has not been immune, as evidenced by reports of priests being among those held in detention camps under freezing, sub-human conditions.

LASTLY, SOLIDARITY leaders, including Lech Walesa, have been separated from the rank and file. Any animal with its head cut off has a difficult time defending itself.

This leads to another question. Given the past history

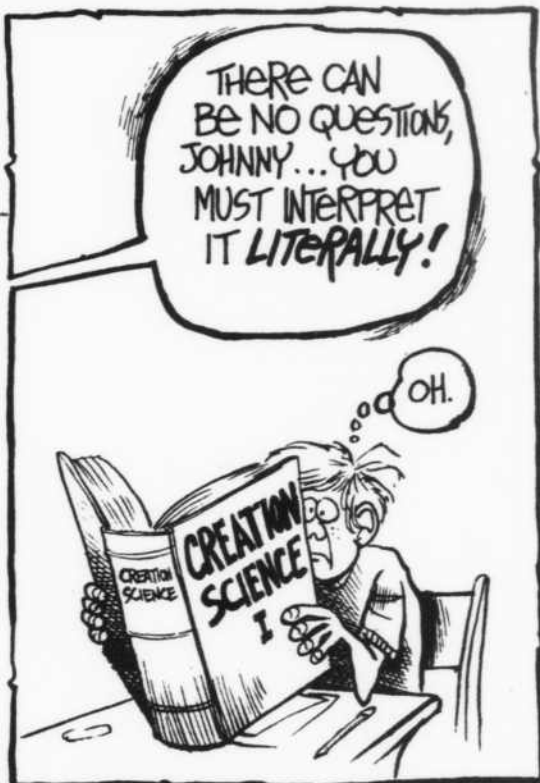
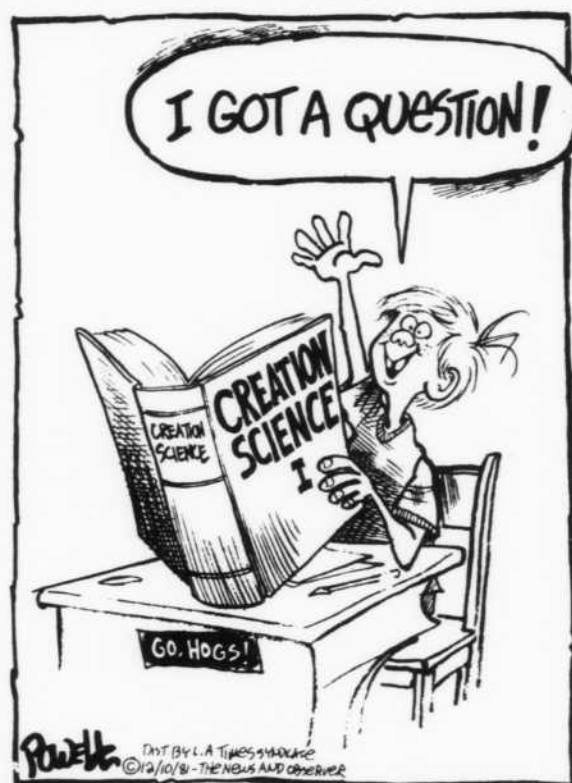
of crackdowns in Soviet-bloc nations, why didn't Solidarity better prepare for the confrontation? Why the apparent lack of a contingency plan? Did the heady gains that Solidarity made in the past year lull its members into a false sense of security? Or did they simply realize that in the event of a crackdown, there would be no way to repulse the ultimate might of the Soviet army?

In another vein, the crackdown in Poland indirectly provided another glimpse into the workings of our world. When I heard of the military intervention in Poland, I immediately turned on the TV. I expected continuous updates and analyses of the crisis by John Chancellor, Dan Rather, Frank Reynolds and companies.

Instead, there was regular programming with sparse "newsbreaks" offering no real news.

THE POLISH government quickly severed communications with the outside world. Our media eye, which we take so much for granted as our window to the world, was effectively rendered blind. Because there was no film available, the crackdown was not focused on, especially in TV newscasts, as it might have been.

This points out the fact that TV journalism is quickly crippled by a lack of visual information. It also made me wonder what other atrocities around the globe go unreported because there is no film footage available to hold our attention.



## Letters From Our Readers

### Another student complaint about MTSU parking

To the editor:

I have just completed my first semester at MTSU as a transfer student.

Overall I very much enjoyed the experience, but I'm afraid I must register my first complaint.

On Nov. 18 I received a parking ticket. I had parked in Cummings lot while at the infirmary. I did this because the week before I had parked there after being told by a member of the campus police that it was alright, there was plenty of room. On that same day I filled out and turned in an appeal form. I was told in an appeal call to traffic court in about two weeks.

By Dec. 8 I had heard nothing. I made a phone call to the campus police who referred

me to Dean Hayes, whose secretary referred me to someone in the ASB office. A gentleman returned my call from the ASB office. He had no record of my ticket or my appeal and told me to call the police again.

Sgt. Burkhalter (I believe the name is correct) returned my call and told me my ticket and a stack of others had just been discovered shoved under a bunch of papers. It would be turned over to ASB as soon as possible. When questioned as to whether my grades would be withheld because of this matter, he assured me that they would not. The court would take care of everything.

It is now the end of December and I do not have my grades. I was told by the business office that I must pay the ticket before I will get my grades or be allowed to register for next semester.

I do not feel I should be penalized for the carelessness and inefficiency of the organizations involved in this. I did what I told to do as a student waiting to have my side heard. How is it at MTSU that the punishment is invoked before the crime has been heard?

Elizabeth W. Miller  
Box 6591

### Sidelines dammed by Beaver

To the editor:

Well, well, well, so Perry O'Parsons is finally gone.

The O'Parsons clan is dead; long live the O'Possums. I for one am relieved to see the end of this long and sordid regime. Yet the degradation, abuse, and insults to our general intelligence level will obviously not end.

I have confidence that our "illustrious" *Sidelines* crew, under the leadership of its new

editor, will soon seek out a clone to replace O'Parsons. Yes, I realize that the silent majority of MTSU students probably function at the level of intelligence exhibited by the typical articles commonly found in our favorite student publication. And that's OK; the rest of us get to laugh at the banality of it all as we rest on our laurels in our Ivory Towers. Still, it seems that at least every once in a while you could accidentally do something good.

On the other hand, you do produce a nicely esoteric campus newsletter. Perhaps you could print up a guide to provide the readership with the names and short biographical sketches of all the "in" people and organizations on campus. Then the rest of us could understand the origins of all this tripe and smile knowingly, or at least give a condescending "wah-wah."

Hey, don't get me wrong. I

like the "Talking Heads" bits. Then we get to see all kinds of Bozos and are presented with short, out of context snippets about something or other. Or do you actually confine them to 13 words or less? Seriously, it's nice to see the real people of the campus. Maybe it should be expanded; (come on guys, how about three complete sentences?).

And one more personal quirk. I fell that you're wearing out the "Beaver" jokes. Beavers are intelligent, hard-working, and downright cute little fellas (or ladies, if you prefer). They have been all too often maligned. Of course, they appreciate all the attention, but it's not their fault that *Leave it to Beaver* was such an outstanding show. Please, let sleeping beavers lie.

Thanks for your time, guys. Keep up the mundane work.

George M. Beaver, Jr.  
Box 8897

### Letters Policy

Letters to the editor are welcomed and are considered on the basis of timeliness, interest, taste, and space. All letters must include the author's name, MTSU box number, and telephone number. The telephone number will be used for verification purposes only.

While letters to the editor are published upon verification of the writer's identity, readers should note these are other readers' opinions and do not always represent the ideas and opinions of this newspaper.

We reserve the right to edit material submitted for publication. Each letter should be brief and on one subject only. We will not print unsigned letters.

Please address all letters and other inquiries to: *Sidelines*, Box 42, or come by Room 310 on the third floor of the James Union Building. We may be reached by telephone at 898-2815.



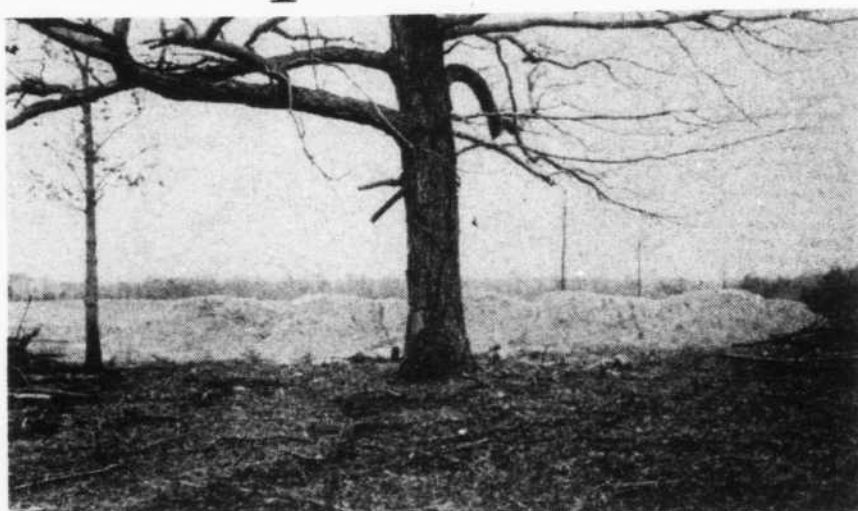
## Photo exhibit to open Sunday

John Scarlata's photographic exhibit "Raped Landscape," will be on display from Sunday through Jan. 28 in MTSU's Learning Resources Center at MTSU.

The exhibit is a novel look at the irreparable damage being done to the earth in the name of progress.

"IT IS important to me that these prints are formally beautiful," Scarlata said.

"I want the viewer to appreciate the structure, the tonal range, the balance of forms and attention to detail. At the same time the meaning of the subject matter should be clear: that the earth is being destroyed in a manner that cannot be repaired."



The prints contrast nature with manmade construction. One shot shows a beautiful wooded hill, part of which has been sliced away to accommodate a new highway. Another por-

trays a solemn tree at a construction site, a silent yet striking contrast to a row of telephone poles stretching into the background.

SCARLATA began photographing the "Raped Landscape" in fall 1980, and his work on the subject continues. He considers highways, lumbering areas, mining operations and shopping malls to be "ideal locations" for his photography.

Currently teaching photography at Virginia Intermont College in Bristol, Scarlata has also taught at four schools in North Carolina.

He achieved a Master's degree in Fine Arts in 1976 at the California Institute of the Arts and previously studied in New York and Colorado.

## January entertainment highlights to include rock, hypnosis, opera

By JANENE GUPTON

Copy Editor

Dave Olney and the X-Rays have been proclaimed as one of the best rock bands to come around in a long time.

Based in Nashville since 1973, Olney has established himself as an original entertainer. In 1978, Olney got together four musicians to make up his band, the X-Rays. Their repertoire mainly incorporates songs written by Olney—emotional songs which would be considered heresy to new wavers.

BUT THOSE who hear Olney and the X-Rays are pleasantly surprised.

Olney's songs have been termed alive. They are bloodcurdling songs of assassins, jails, tortured informers and weary smugglers. They tell of the will to survive, of revenge, faith and hope. Olney's songs cover the spectrum of human emotions.

For those who would like to reminisce over the Buddy Holly era, Olney and the X-Rays are just the prescription. The group will perform at the first Noon Show of the semester, Thursday, Jan. 14.

The second Noon Show will feature professional hypnotherapist Tom DeLuca.

DELUCA BLENDS comedy

with the serious hypnotic process. During the first part of the show, the phenomenon of hypnosis is explained through a demonstration. The second part of the show is a comedy parody called BSP (from ESP).

Four and a half years ago, DeLuca began working as a hypnotherapist dealing with psychosomatic disorders. During this time, he has become aware that most of one's problems, emotional as well as communicative, stem from a negatively programmed unconscious mind.

"I look at hypnosis and unconscious communication as a freeing of creative human potential, to change stagnant lifestyles and achieve goals." DeLuca is currently working on his Ph.D.

HIS SUBTLE blend of comedy and hypnosis has earned him a *Newsweek* rating among the top 10 variety acts per-

forming on college campuses.

Following the Jan. 19 performance will be a discussion concerning the field of unconscious communication and hypnosis.

Wrapping up a month of exceptional shows will be the National Opera Company's production of "Die Fledermaus" on Jan. 30, 8 p.m., in the Wright Music Hall.

THE NATIONAL Opera Company's touring group consists of 12 professional artists who travel with costumes and sets. These performers were chosen from nationwide auditions. Through their performances they have done much to further the cause of "Opera in English."

One show only will be given of Strauss' work. For ticket information call the MTSU Music Department at 898-2469. A limited number of tickets are available.

## New class to unravel mysteries of Rubik's Cube

By SCOTT DENSON

Staff Writer

Did Santa Claus bring you a Rubik's Cube for Christmas? Have you had trouble solving it?

Now there's an opportunity for all MTSU students and faculty to learn the problem solving technique of Rubik's Cube.

"FIRST WE will take the cube apart to understand it," said Dick Callahan, accounting

professor and instructor for the cube-solving group.

"Then in five steps we will learn slowly, one by one how to solve the puzzle," he said.

THE GOAL for the group which only has five registrants and expects more, is to have a "cube-off" in the future as well as father/son combinations and possibly an MTSU Rubik's Cube championship this spring.

Sidelines is now taking applications for Ad Salespeople for the spring semester.

Call 898-2917 or come by Room 310 of the James Union Building.

### Now Open HUGH'S MUSCLE AND FITNESS CENTER

Featuring the best in Nautilus and Free Weight Equipment  
Reduced Rates for Students

- No Contracts
- No Monthly Payments
- Individual Programs
- Low Membership Prices
- Special Couple/Buddy Rates
- Ladies' Free **Aerobic** Dancing (With Membership)

Also Offered: Karate, Self Defense, Men, Women Children (Group Lessons) Private, Semi-Private/Qualified Instructor

HOURS: Mon.-Fri. 9 a.m.-10 p.m.  
Sat. 9 a.m.-6 p.m.  
1124 Brinkley Rd. Phone: 890-1289  
North Broad Across From Stones River Plaza  
(Turn West at Ace Hardware)

### BASKIN-ROBBINS ICE CREAM STORE

31

With coupon all Sundaes

99¢ plus Tax

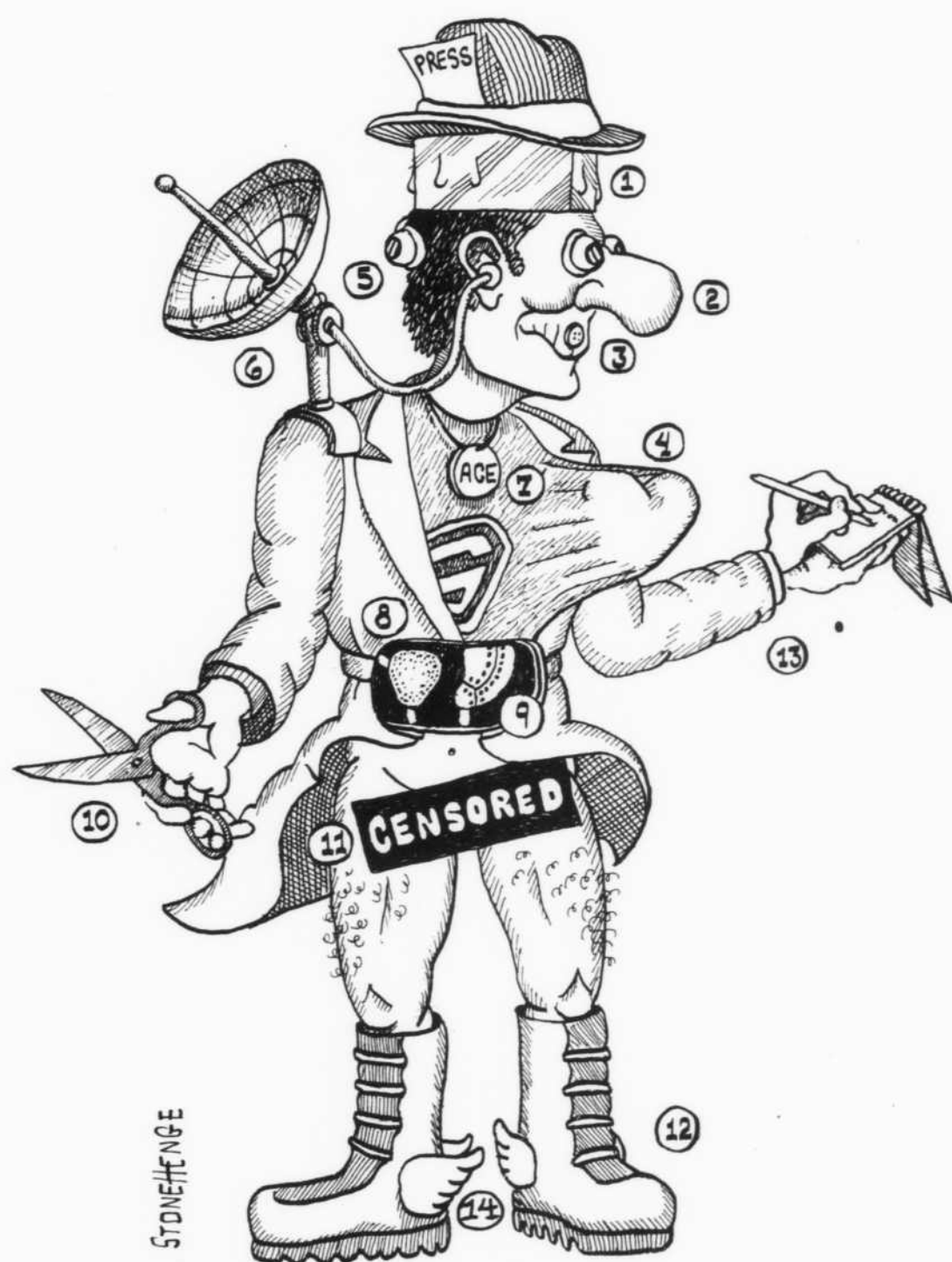
Regularly 1.40 plus Tax

1 Sundae per coupon

Mercury Plaza 890-2271

Expires Jan. 22

## The Ideal Sidelines Reporter



If you resemble this man, come work for *Sidelines*. We need news reporters, feature writers, sports-writers, columnists, reviewers, photographers, and ad salesmen.

Join us at our Open House  
Tuesday, Jan. 19, 7 to 9 p.m.  
Room 310  
James Union Building  
(or call us anytime: 898-2815)

1. Cool head: 2. Big nose (sniffs out the facts): 3. Buttoned-up lip (protects confidential sources): 4. Big heart: 5. Eyes in the back of head: 6. Ears like radar: 7. Snazzy nickname: 8. Sponge-like liver: 9. Cast-iron stomach: 10. Sharp scissors (cuts through red tape): 11. Sidesteps slanderous stories: 12. Galoshes (for wading through it): 13. Handy second hand: 14. Winged feet (for meeting deadlines).



# Voice of Blue Raiders, Hale, 'a very special person': Earle

**SPORTS EDITOR'S NOTE:** Longtime MTSU sports broadcaster Monte Hale died of cancer this past Saturday at Rutherford Hospital.

Monte had fought a long and courageous battle with cancer before succumbing. He leaves behind not only his family and close friends, but a listening audience at large to whom his name and Blue Raider athletics are synonymous.

Sidelines has asked MTSU Athletic Director Jimmy Earle to write a tribute to Monte Hale. We asked Earle to pen a tribute to the late Blue Raider voice because he, as much or more than anyone else involved with athletics at this university, knew Monte as a close friend. Who better to write a final tribute.

By JIMMY EARLE  
MTSU Athletic Director

The "Voice of the Blue Raiders" for the past 18 years will no longer be in the press box or at courtside to broadcast MTSU athletic contests.

Monte Hale, the man whose dynamic voice thrilled Blue Raider fans for years, died last Saturday after a long, hard battle with cancer.

MONTE HAD achieved a professional status not many broadcasters ever attain. He was a very hard-working, goal-oriented person. He worked tirelessly over the years with the dream of eventually owning his own station. His dream was realized when he bought WKOS-FM. He was at the zenith of his career, a well-known, highly respected sportscaster all across the state of Tennessee.

Monte Hale's contributions to MTSU go far beyond being the "Voice of the Blue Raiders." Monte was the past president of the Blue Raider Club, the university's athletic booster organization. He was an active fund raiser for various projects the athletic department has undertaken over the years, master of ceremonies at all MTSU athletic functions, and a trouble-shooter for the athletic department in many different areas.

Monte helped the coaches recruit athletes, taking time off from his family and his business, and spent time talking to prospective athletes about coming to MTSU. He advised and counseled many MTSU athletes. He had an uncanny ability to relate to the modern-day athlete and he helped many of them.



The MTSU careers of former head basketball coach and current Athletic Director Jimmy Earle and the late Monte Hale paralleled each other quite closely. Hale was behind the microphone when Earle took the basketball reins in 1969, and beginning then he described the most successful decade in MTSU basketball history, the Earle era. Far beyond the working relationship between a team's coach and its radio announcer, though, Jimmy Earle and Monte Hale were close personal friends. We at Sidelines wish to thank Jimmy Earle for taking time to compose this tribute.

MONTE LOVED the university and the athletic department. He rejoiced when the athletic teams won, and he accepted losing like the coaches and players did—with difficulty, but grace. He was always there after a tough loss to give encouragement to

the players and the coaches.

There are many words that describe Monte Hale—courageous, talented, dedicated, loyal, intelligent, sensitive. Monte was all of these and more. But if you had to use just one

word, it would have to be the word "special," because Monte was a very special person.

Blue Raider athletics will miss this very special person, but there will always be a special place in our hearts for Monte.

## Sports

# Raiders zap Zips; Youngstown next

By DON HARRIS  
Sports Writer

It's lonely at the top, the age-old adage goes, but "it sure feels good," according to head basketball coach Stan "Ramrod" Simpson.

Couple Middle Tennessee's 21-point thrashing of Akron here last night with Morehead's 59-57 victory over Western Kentucky and the Blue Raiders now stand atop the Ohio Valley Conference with an unblemished 4-0 league mark.

WITH THE triumph, MTSU to eight games to become the first major college in Tennessee also extended its winning streak

to win 10 games this season. The Blue Raiders are now 10-2 overall.

The Zips, 1-4 in the OVC and 4-8 overall, came into Murfreesboro last night looking to get back into the league race, but came away empty handed as Jerry Beck and Rick Campbell combined for 50 points to pace Middle Tennessee to an 83-62 romp before 5,750 fans in Murphy Center.

Akron was within striking distance at the half down 39-28,

and came out smoking after a halftime session with head coach Bob Rupert.

THE ZIPS staged a 10-3 scoring outburst to slice the Raider lead to only four points at 42-38 before Simpson called a time out to regroup the Raiders.

But after Ramrod's session with MTSU, an entirely different team came out on the floor.

Middle Tennessee put on a clinic of steals, dunks, and layups while scoring 12 unanswered points to send Murphy Center into bedlam with a 54-38 Raider lead and the Blue Raiders never looked back.

DURING THE spurt, all-OVC forward Jerry Beck canned two 3-point plays and Rick Campbell made two front-court steals, dunking one and passing the other off to Beck who made a two-handed stuff.

Campbell's hot hand from the outside (he hit 10 of 18 from the field) forced Akron to come out of their sticky 2-3 zone defense and allowed MTSU to get inside on the boards.

"The only way we were up at the half was Beck and Harris at the boards," Simpson said. The Raider mentor was referring the two's combined first half rebounding of 15. Harris had eight and Beck pulled down seven.

"IF YOU GO to the boards and play good defense, it keeps you in it," the third-year coach said.

The Blue Raiders did just that yanking down 37 rebounds to 24 for the Zips, a statistic that is surprising for a team with the tallest starter being only 6-7.

Even more surprising is the fact that MTSU leads the OVC in rebounding margin with a

plus 7.1 per-game average.

BECK'S 28 points and 13 rebounds was perhaps his best overall performance of the year. The 1980-81 OVC Player of the Year has been struggling in the early season, but is slowly upping his averages.

The senior forward connected on 10 of his 12 shots from the floor and canned all but one of his nine free-throw attempts.

Another Raider who Simpson felt had his best game of the season is junior transfer Dwayne Dorsey.

DORSEY HAD eight points by hitting four of his five attempts from the field and pulling down three rebounds.

"Dorsey had his best game of the year," Simpson said. "He came in and sparked us."

As a team Middle hit on 34 of 60 attempts from the floor for 56.6 percent and 15 of 22 from the charity stripe for 68.2

percent.

AKRON HIT on 29 of their 57 field goal attempts for a 50.9 percentage, but could only manage four of seven foul shots as MTSU only committed 12 fouls.

Middle Tennessee won't have much time to savor their first place standing when Youngstown's Penguins waddle into Murphy Center Saturday night to try their hand against the Blue Raiders.

"Youngstown is a young basketball team with a whole lot of young talent and that is very well coached," Simpson said.

THE PENGUINS are coming off a 76-60 victory over Tennessee Tech and stand 3-2 in the OVC, 4-6 overall.

The Ohioans bring to Murfreesboro the best field-goal percentage team in the OVC boasting just over a 50 percent per-game average.



Photo by Greg Campbell

Rick Campbell (30) drives through the hapless Akron defense to score "two for the Blue." Campbell had 22 points on the night as MTSU sent Akron back to the frozen north an 83-62 loser



Photo by Greg Campbell

MTSU's Jerry Beck goes high for two of his game high 28 point-against Akron last night in Murphy Center. Last year's OVC Player of the Year looked as good as ever in MTSU's eighth straight win

## Sports Stuff

By Bob Gary

Well, we're back for another semester, and we're also glad that all of you sports fans are with us once again!

It's been a good holiday break for you, I hope. It certainly has for MTSU athletics, specifically basketball. The men played their best ball to date over the break, and the women, not to be outdone, are doing well also. I won't go into a lot of detail, as we have features on both the men's and women's teams elsewhere in this issue.

AS YOU MAY OR may not have noticed on the editorial page, I'm now the sports editor here at Sidelines. This job is one that I'm looking forward to in that it will be a challenge of the highest order. I would be less than honest if I did not add, however, that I dread it in the sense that I have a lot to learn about being responsible for the sports news you read every Tuesday and Friday. Believe me, it goes a lot further than sitting here for an hour or so every Thursday and writing a column off the top of my head.

What I guess I'm really trying to say is that it might be a bit rough looking in the early going while I'm trying to find out which way is up, but I'm going to give it my best shot. So, as they say in TV when your picture goes poof, please bear with us.

I do want to mention a couple of other things in perhaps a more

positive vein, though. First of all, I can happily say that I anticipate the quality of the sportswriting done here to be as competent and credible as ever. You'll be seeing a lot from guys like Don Harris, Steve Price, Scott Adams and I may even do a couple of things.

WE'RE ALSO GOING TO throw something new at you in the form of a new sports column that will run on Tuesdays. We'll call it Sports Stuff Tuesday which more than likely means the name of this column will be Sports Stuff Friday. The column will be penned by a good friend of mine, Joe Fisher, a senior from Nashville. He's knowledgeable in sports, and I've known him to be very opinionated at times. Whether you agree or disagree with him a particular week, Sports Stuff Tuesday should make interesting reading, and I think you'll enjoy it.

Well, that's about it for this week. Oh, almost forgot. I am now taking written nominations for two new PRE-EMINENT TENNESSEE VOLTS to endure WEEKLY DIGS. This is necessitated by the fact that both Jay and Russ, last semester's orange-blooded wonders, are no longer here at MTSU. So, if you have a friend who is a die-hard Tennessee fan and has a good sense of humor, send his name to post office Box 3493 here on campus. Immediately after doing that, find the poor soul professional help.



# Lady Raiders go south for 'classic'

Larry Joe Inman is in a rather odd position.

He and his MTSU Lady Raider basketball team are in Oxford, Miss. today preparing to take on host Ole Miss in the first round of the Dial Classic women's basketball tournament. What's so strange about that, you ask?

WELL, GENERALLY the host team in the tournament (in this case Mississippi) selects the team it considers the weakest in the field to play in the first round. This, of course, almost guarantees the host team an easy ride into the tournament finals and a better chance of winning its own tournament.

The bottom line is that if the Lady Rebels have indeed selected MTSU as their first-round opponent for that reason, they have either made a serious error in judgement, or there are some horses in this four-team field.

It is true that the Lady Raiders have not seen action since Dec. 19, and it is equally true that their last time out resulted in a lopsided loss to arch rival Tennessee Tech in Murphy Center. Inman is quite aware that the layoff could be a telling factor.

"WE'VE BEEN out of action

since the 19th, and I hope our players can really pull it back together this weekend. We definitely need to get our timing back," Inman said.

Jennifer McFall and Robin Hendrix will, as usual, be counted on to shoulder most of the scoring burden for MTSU. They're averaging 13.8 and 13.6 points per game respectively, good for the top two spots on the squad and the number eight and nine spots in the OVC.

On top of those statistics, McFall leads the entire conference in free-throw shooting (86.7 percent), while Hendrix is tied with Morehead's Priscilla Blackford for rebounding honors (11.5 per).

MTSU HAS prior experience with two of the other teams in the Dial Classic, having split two past contests with Ole Miss, and losing their only previous matchup with South Alabama by a 51-50 count last season. South Alabama and Mercer's women's clubs hook up in the other first round game.

"It's really a class field," Inman said of the tournament lineup. "Ole Miss has a top-flight program, they're quite good."

"The other two teams in the

tournament, Mercer and South Alabama, are just as solid," Inman continued. "We played and lost to South Alabama last year and they are tough again. We've never played Mercer, but

they do have an excellent reputation around this region."

The Lady Raiders bring a 5-1 record into the opener with Ole Miss which tips off at six tonight.



Robin Hendrix (52) and Daphne Newsome (25) will lead their teammates against the Ole Miss Lady Rebels tonight in the first round of the Dial Classic

## Blue Raider holiday gift; streak over break

By BOB GARY  
Sports Editor

All you folks that went home for the holidays and loaded to the gills with all the turkey and trimmings etc., really missed some great basketball brought to you by none other than the MTSU Blue Raiders.

Here's a quick summary of how the Raiders did over the holiday break, including score, leading scorer and leading rebounder:

FIRST, on Dec. 17, MTSU overcame a slow start to whip Georgia State 62-49. Rick Campbell led the way offensively for the Raiders with 19 points, and Jerry Beck snatched 17 rebounds.

On Dec. 19, the hated Tennessee Tech Golden Eagles stopped by to pay their first visit of the year to Murphy Center, and they came out on the short end of an 88-63 score. In what might well have been MTSU's best performance of the season to date, Campbell again led all scorers with 29, and Beck shared rebounding honors with Chris Harris at nine.

Non-conference foe Samford came to town on Dec. 21, and it took the Blue Raiders an overtime period before prevailing 67-63. There was a pretty good brother act on that night, as Jerry and Kenny Beck

OVC Standings		
TEAM	OVC	ALL
MTSU	4-0	10-2
Western	2-1	5-6
Murray	2-1	8-4
Morehead	3-2	6-4
Youngstown	3-2	4-6
Austin Peay	1-2	3-10
Eastern	1-3	3-7
Tenn. Tech	1-3	3-8
Akron	1-4	4-7

tied for scoring honors at 11 points each. Wardell "Poundcakes" Perry came off the bench to snag seven boards.

COACH Stan Simpson had to suffer through another overtime white-knuckler on Dec. 30, as MTSU managed to avenge a lopsided loss from last season. This time Detroit was the victim, by a 64-62 count. Jerry Beck was tops in both scoring and rebounding, with 22 and 14 respectively.

And finally, on Jan. 4, the Blue Raiders made their only road trip of the break, and it was a long one. MTSU took their ninth win of the season in Cincinnati, Ohio against Xavier by a score of 69-48. Campbell filled it up, scoring 27 points, and Jerry Beck claimed eight rebounds.

### Classifieds

#### For Rent

Apartment for Rent, starts at \$210. Call 896-0667 or 896-4470.

#### Personals

LET ME THREAD THE NEEDLE FOR YOU!!! Alterations, hemming, repairs and reconstruction of old jeans. College rates! Call Linda Syndor at 890-8008.

Wanted: Ride to Chicago or Madison, WI at semester break. Call 890-2499

#### Classified Rates

Student Rates  
For 20 words (minimum), \$1.50 per issue; 21-25 words, \$2.00; 26-30 words, \$2.20. Special effects cost \$1.50 extra per insertion. All classifieds must be paid in advance of publication.

Non-student Rates  
For 20 words (minimum), \$1.85 per issue; 21-25 words, \$2.50; 26-30 words, \$3.25. Discounts with frequency. All classifieds must be paid in advance of publication.

DEADLINES are 4 p.m. Wednesday for Friday's paper, and 4 p.m. Friday for Tuesday's paper.

### ABORTION COUNSELING and REFERRAL



- \* State Certified - Licensed Clinic\*
- \* Family Planning\*
- \* Free Pregnancy Tests\*
- \* VD Testing\*
- \* Pregnancy Termination Services\*
- \* Confidential Counseling and Information\*

Hours: 8 a.m.-10 p.m. M-F, 8 a.m.-12 noon Sat.

• 4407 CHARLOTTE AVE. •  
• Call Collect •  
298-4494

## Skedaddle Bicycles



1004 D Memorial Blvd.  
(Down from Popeyes Chicken)

HOW TO PASS GAS  
BUY A BICYCLE  
AT SKEDADDLE!

#### Bike Education:

A bicycle is the most efficient means of transportation known to man.

-Buckminster Fuller

If your tires are inflated to the proper pressure, your bike will roll easier.

We have a good selection of Raleigh and A.D. Puch bicycles.

Cannondale Backpacks 10% off  
with this coupon

## WE'RE OPEN!

University Game Room  
1403 Greenland Ave.

10 a.m. til 11 p.m. Daily  
2 Blocks from Dormitories!

10 a.m. to 11 p.m.  
Pizza By The Slice 75¢

"Check It Out"

- \* Pac-Man
- \* Eagle
- \* Missile Command
- \* Crazy Climber
- \* Ticker Tape
- \* Black Jack
- \* Poker
- \* Pool
- \* Asteroids
- \* Bezerk
- etc.....

Bring in Coupon and Recieve 1st  
Defender or Pac Man game  
on the house!

Coupon entitles Bearer  
to one Free game  
Pac Man or Defender.  
Offer Expires 2-8-82  
Limit 1 per customer.

## U.C. CINEMA

presents

Monday-Tuesday

January 11 and 12



STRIPE

3:30pm - \$1.00  
7:00pm - \$1.25

Next Movie: Wednesday-Thursday  
3-D CREATURE FROM THE BLACK LAGOON

## Sir PIZZA

1902 E. Main

Jackson Heights Shopping Center

### DAILY LUNCHEON SPECIAL

11:00 A.M. to 3:00 P.M.  
Dining Room or Carry Out

FREE A Garden Fresh Dinner Salad  
PLUS  
Coffee, Tea, or Fountain Drink

Beer (Limit 1) .25

With The Purchase of Any Sandwich

OR

Spaghetti Ala-Carte

### WEEKLY SPECIALS

Sunday, Monday - Super Special

Dining Room or Carry-Out  
"All Day"

Tuesday - \$2.00 Off Any  
One or more ingredient  
Large Pizza

Dining Room Only  
"All Day"

Wednesday - 8" Pizza One Ingredient

11 A.M. - 3 P.M.  
\$1.97

Thursday - Queen Chef Salad

11 A.M. - 3 P.M.  
\$1.80

## THE TYPEWRITER SHOP

SALES - SERVICE  
NEW - USED

#### RENTALS

ELECTRIC - PORTABLE MODELS  
DAILY - WEEKLY - MONTHLY RATES  
EXPERT SERVICE ON MOST MAKES -  
HARLOW WEBB - KEN GOAD



890-3414

Jackson Heights Shopping Center (Lower Level Under Sears)



TUXES

1002 Memorial Blvd.

Happy Hour 2-5

\$2 Pitcher

All Beer

(\$2.35 at Regular Price)

Pizza 1/2 price all week