

Rohrdanz becomes the third Mr. MTSU



Moderator

Freddy Rohrdanz was announced the winner of the third annual Mr. MTSU contest Tuesday night in the DA auditorium by the master of ceremonies, Huell Howser.

Rohrdanz, sponsored by the Little Sisters of Minerva, wore a gray tweed jacket with patch pockets, red slacks, white shirt and a print tie when he accepted his plaque from last year's Mr. MTSU, Floyd Beason.

The first runner-up, Cameron Kerr, was sponsored by Sigma Chi. Kerr, a pre-med student, is a sophomore from Murfreesboro.

Second runner-up was Clay Gaines, sponsored by Kappa Delta sorority. Gaines, a senior from Hendersonville is a member of Kappa Sigma fraternity.

Proceeds from the pageant will be donated by Chi Omega sorority, the contest sponsors, to a scholarship for needy students.

Selection for the contest was varied. According to Kerr, many

By Diane Johnson
Managing Editor

of the contestants were appointed by their clubs to be in the contest. Some said they had been elected while others were chosen by special club committees.

Some of the contestants got very little advance notice about the pageant. Gaines commented that he had only one day to prepare.

After the introduction of the judges by Howser, the 12 contestants appeared in casual clothes. They also modeled dress clothes of their choice.

All of the contestants were asked a question. To his question on his campaign slogan if he were to run for ASB president, Rohrdanz suggested, "make romance with Rohrdanz."

Entertainment was presented by Miss MTSU, Nancy Beard, and by the "Brothers and Friends".



Mr. MTSU

Middle Tennessee
State University

SIDELINES

Friday, Feb. 4, 1972

Murfreesboro, Tenn. 37130

Vol. 45 No. 35



Entertainer

Comedian Pat Paulsen entertained a crowd of over 1000 people last night in the Dramatic Arts Theatre with his comic monologues.

Paulsen 'brown bags it'

SIDELINES came out of a bag last night when comedian Pat Paulsen entertained capacity crowd at the DA auditorium.

While reading the newspaper "factitiously" Paulsen read a story of a nineteen-year-old cheerleader who was sent to the infirmary from an overdose of birth control pills. When asked why, she replied that she was getting ready for the Tech game.

Another item which caught the humorist's eye was an ad for a ride during spring break. The person would share gas and expenses, but the driver must be willing to drive straight through to Smyrna.

Paulsen had not had time to eat supper but "brown bagged" from the grill. About the skim milk, he wondered which pond it had been skimmed from. His hamburger was wrapped in newspaper. He commented that he was glad to know what the rag was good for.

Before his lecture on sex education, he suggested that anyone opposed to such a lecture should leave the hall. When no one left, Paulsen commented that he was surprised that there were no teachers at his talk.

New student court

Senate votes to abolish dorm councils

Abolishment of the men's and women's Inter-Dormitory Councils, and the establishment of a student disciplinary court was passed in a bill by the ASB Senate, Tuesday. Passed by 10 yes votes to three absentions, the bill goes to the ASB House of Representatives next week for consideration.

The bill proposed by freshman Senator David Dodd, calls for the replacement of the existing courts with a student disciplinary court composed of three judges, one each from the sophomore, junior and senior classes.

The senior justice, the bill stipulates, will be the judge with the most seniority.

In addition to the three judges, a court recorder, public defender and bailiff, appointed by the ASB president, will also be appointed to serve on the court.

If passed, the measure calls for the filling of appointments "as soon as possible after the act becomes law to allow ample time for the writing of procedure," otherwise the legislation calls for the court to become active August 1, 1972.

Dodd's bill indicates that the sophomore judge will serve a maximum of three consecutive terms and the senior class judge may serve one term.

Senator Dodd noted the need for reform recalling that a federal district court judge called the present student court system "specious and illegal."

The political science major criticized the present court system saying, "We're too bulky. The 15 to 19 people on the courts is too bulky in size to accomplish any degree of fairness."

Secondly, the Inter-Dormitory Council is not strictly based on law, Dodd indicated. He continued that the judicial system is based on questionable procedure.

Dodd stated that the dual system of male and female justice is "archaic and should have been done away with a long time ago."

Defending his bill, the freshman senator stated that the bill provided a system that is more professional and more efficient in rendering a verdict "The court will be more equitable because it is based on law," Dodd concluded.

At present the recommendations of the Inter-Dormitory Courts go to the associate dean of students for final action on a case.

Appeals on the courts' decisions are first made to the Student Supreme Court then to the University Discipline Committee and to the University Appeals Committee.

Senate spills tabulation mistakes, small portion of votes counted

Not all ballots in the student opinion survey were counted, indicated freshman Senator Ms. Charlene Cantrell in the Senate meeting Tuesday afternoon. Ms. Cantrell reported to the Senate that the counters tabulated about 300 of the 1076 ballots.

She stated that "it took forever to count a 100." Consequently, Ms. Cantrell stated that the tabulators, Sens. Cantrell and Butler, counted a 100 then took a few at random and multiplied them all by ten.

"You could tell votes were going so drastically this way,

then so drastically the other way, then we picked some at random, then they just turned out," the freshman senator explained.

Martha Driver, speaker of the Senate, indicated that the ballots were still in the ASB offices "if anyone wanted to count them."

Inside the news . . .

The Tellico Dam controversy
(See page four)

SIDELINES, ASB reveal new total in campus poll

New tabulations of the student opinion survey were completed yesterday by SIDELINES staff members and ASB officials resulting in the discovery of 200 additional ballots.

The recount changed the total vote from 1072 to approximately 1280 ballots.

The new count identified changes in the presidential preferences. Congressman Paul McCloskey, R-Calif. received a vote of 212 exceeding the Reagan vote by 49 votes. President Nixon maintained his lead in the new count with a vote of 765 over the 580 votes originally tallied.

Democratic voting patterns revealed a wide division of support. The lead in this tabulation switched from Kennedy with 227 votes (compared to a previous total of 231) to Edmund

Muskie with 297 votes. George Wallace received a vote of 211.

Students approval of Nixon's China visit rose with the second total from 812 votes to 1029 yes votes. One hundred and nineteen students opposed the visit as compared with ninety opposing votes previously.

The question receiving the most opposition from students with 1039 no votes asked if the student favored bussing to achieve racial balance in schools.

Asked if they approved the use of violence as a legitimate means of dissent, 1029 students answered in the negative.

More intervention on the part of the government for environmental protection was favored most highly by the students by 1187 yes votes to 75 no votes and 21 students failing to offer an opinion on the issue.

The second highest number of yes votes indicated that 1126 students were aware of the penalties for marijuana usage.

A majority of the students (5-1) favored the legalization of abortions for consenting patients. The legalization of marijuana was opposed by a vote of 524-627 with 105 students offering no opinion.

Those approving pre-marital sex predominated by a vote of 816-309. However, more students said they had participated in it than approved of the practice, 819 to 383 opposed.

Monday deadline

Superlatives to be chosen

Monday, Feb. 7, is the deadline for nominations for the six Most Outstanding Seniors to be turned in, according to Rochelle Williams, senior class senator. Anyone who has completed 90 semester hours may be nominated, she added.

No application form is necessary she said, as long as the name and box number of the nominee is clearly legible. Nominations should be turned in to the ASB office or sent to Box 1, campus mail.

The six seniors will be named by a selection committee which

will review all nominations, she continued.

Ms. Williams added that all nominees will receive a form to complete in order to give the committee members more information about their activities.

The selection of outstanding seniors came as a result of student government legislation in December, 1971, which redefined senior superlative elections by eliminating "Lady of Blue," "Bachelor of Ugliness," "Most Versatile Male and Female," "Most Popular Male and Female" and "Most Outstanding Male and Female."

Naylor attends prayer breakfast

Not just the prayer breakfast itself, but the idea behind it seems to be working, according to Tom Naylor, assistant professor of music.

Naylor, who recently returned from the National Prayer Breakfast in Washington is still uncertain how he was selected to participate in the meal which gathered nearly 3,000 national and international leaders at the Washington Hilton Ballroom.

In his remarks to the group, President Nixon said he appreciated and encouraged prayer for himself personally, not only for

his job as President but for his upcoming trips to China and Russia, according to Naylor.

Along with President and Ms. Nixon and congressional leaders, seated at the main tables were the President of South Vietnam and his wife.

Following the breakfast, the group divided into seminars designed to fit their various interests.

Both Naylor and Jack O. Weatherford, president of the Murfreesboro Bank and Trust Co., attended the leadership seminar which lasted 2 1/2 hours.

Most of the seminar involved reports from various leaders on the progress of prayer breakfasts throughout the nation and world. Following this, lunch was served.

Concluding the day's activities was an international dinner with guest speakers and government officials from various countries involved.

Dance instructor starts new television show

Educational television has added a new program to its schedule, and Ms. Anne Holland, modern dance instructor at MTSU, is responsible for the idea.

"Body Poems" was first presented February 1 at 2:30 p.m. on Channel 2. It is a 15-minute program designed for small children.

"It is a totally new type of television presentation," Ms. Holland explained. "Those watching are supposed to react and perform with the show."

Children from the Campus School are used on the show for demonstration.

Two years ago Ms. Holland demonstrated the innovation of modern dance instruction to the Tennessee Association for Children Under Six (TACUS).

Dean Freedle, assistant professor of education, in charge

of the technical direction of the demonstration, used MTSU video tape machine equipment to make the idea into a reality.

The purpose was to find a way to get dancing instructions into the elementary schools. Ms. Holland, vice chairman of the dance panel of the Tennessee Arts Commission, used the TACUS interest to instigate action from the educational television station.

Ms. Holland received her A.B. degree in English at the University of North Carolina, Chapel Hill, her Master of Fine Arts in dance at the University of North Carolina, Greensboro, and a Master's in physical education at MTSU. She is presently enrolled in the doctoral program here.

Her professional training includes instruction from Foster Fitzsimmons, Perry Mansfield and Robin Gregory.

New rules determine convention delegates

"New rules under which Tennessee will choose delegates to the national convention can revolutionize the process by which Americans elect their president," Larry Harrington, MTSU Young Democrat president, told the club.

Speaking Tuesday night at the meeting of the YD's, Harrington encouraged the members to participate in the precinct conventions which is the first step in selecting delegates to the national convention.

"For too long in the Democratic party, since Kefauver lost his presidential bid in 1952, big labor leaders, big money men and assumed black leaders have almost served as an elite nominating committee," Harrington said.

"These new rules," he said, "make participation a necessity."

They provide for wide-open precinct conventions and require minority representation."

He added that a certain number of the delegates must be black, must be under thirty, and perhaps as many as half must be women.

Precinct conventions held on April 7 will provide a beginning for ward and precinct organization, Harrington said. "These conventions will get people involved in a positive way with their neighbors in the electoral process. They can actually promote a sense of community," he added.

Praising plans for reorganization of the Rutherford County Democratic Executive Committee, Harrington called on the YD's to help make the rank-and-file Democrats in the precincts aware of the new rules and make them work.

Biologist eyes effects of DDT

While much concern is now focused on the danger of man-made pesticides such as DDT and its derivatives the precise nature of their effects is not fully understood, according to biology professor, Marion Wells.

Wells and instructor George Murphy have been granted a research grant of \$700 to explore the effects of DDT on turtles.

By studying turtles they hope to discover the nature of DDT's action in the organism and how the animal handles it in its system, Wells commented.

The instructor indicated that presently it is not known how the substance kills. "We assume it acts on the nervous system," Wells added.

He related that DDT is found in the major food source of the turtles, fish which take up insecticides readily. Wells indicated that one type of fish has been found that breaks down the substance DDT to detoxify it.

A second myelin sheath on the surface of the nerve cells of this type of fish appears to protect it from the insecticide, Wells stated. This second covering is absent on other types of fish non-resistant to the substance.

Visit the Colonel
MTSU STUDENTS
WELCOME



Try our Colonel Burger

It is Great
Only 59¢



Dinner
ONLY 99¢

With this coupon

Dinner includes 3 pieces of Kentucky Fried Chicken, potatoes, gravy, rolls and cole slaw.
Offer expires Thursday evening, Dec. 9th.

Clip Coupon And Take To

COLONEL SANDERS' RECIPE

Kentucky Fried Chicken.

519 S. Church St.
896-4120
Murfreesboro,
Tenn.
SUDDEN
SERVICE

1/2 Price SALE

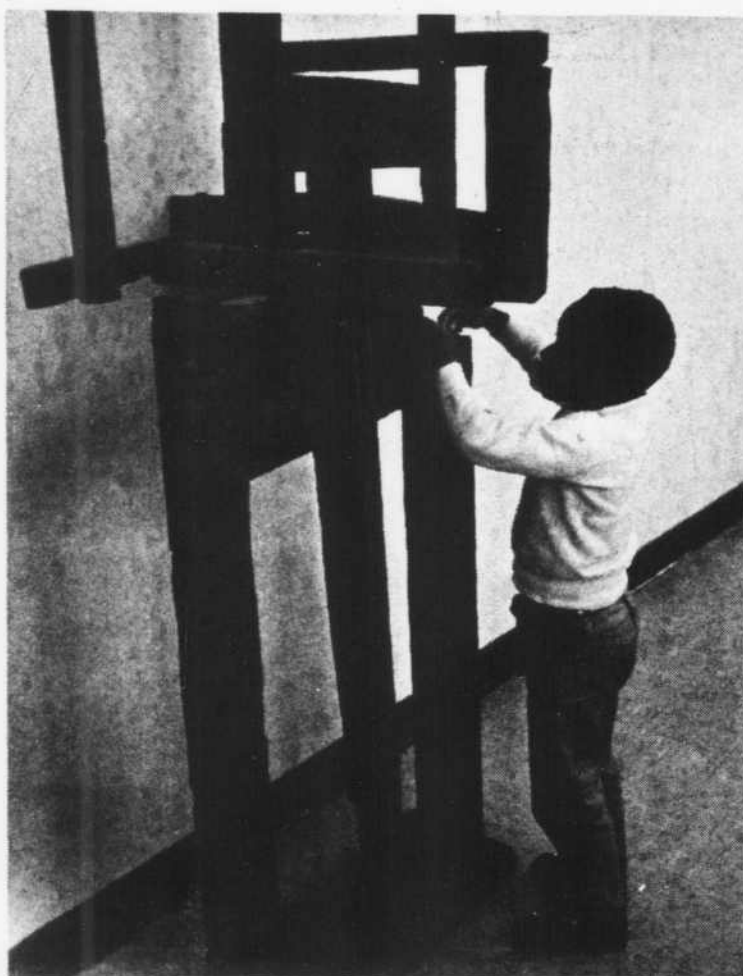
Everything in the store

(excluding spring merchandise)



The Cotton Patch

JACKSON HEIGHTS PLAZA
MURFREESBORO, TENNESSEE 37130



Art fanatic

First hand observation is encouraged for the student art exhibit, showing February 1-15, at the art barn.

Debate team places second at invitational tournament

The MTSU debate squad captured second place in a field of 50 schools last weekend at West Georgia College's twenty-second annual Red Clay Classic Invitational Debate Tournament, according to Jim Brooks, debate coach.

Leading the way was the varsity team of Terry Thomas, a sophomore political science major, and Don O'Guin Jr., a junior political science major from Nashville.

Their 6-2 preliminary record enabled the team to qualify for the elimination rounds composed of the top 16 teams from a field of 50.

MTSU met Carson-Newman

College in the final championship round and was defeated on a four-one decision, giving MTSU second place in the debate.

In addition MTSU won two other awards. Tim Watson, a freshman political science major from Memphis, took second place in extemporaneous speaking in a field of 40 contestants. Linda Moore, a freshman speech and theater major from Memphis, took second place in oral interpretation in a field of 35 contestants.

The three awards together gave the MTSU squad enough points to take second place in the overall competition for the Sweepstakes Awards.

SPRING TOURNAMENTS

Tournament dates:	Date applications due:
Feb. 14-18 Chess	Feb. 11-2:00
Mar. 6-10 Pool	Mar. 3-2:00
April 10-14 Rook	April 7-2:00

Applications available
in
U.C. office

File 13

Stage Band to present concert

Tickets are now on sale for the "all new" Phi Mu Alpha Stage Band Show to be held Feb. 10 in the DA Auditorium at 8 p.m.

This year's show includes selections from "Jesus Christ Superstar" as well as hits of such artists as Chicago, Buddy Rich, John Lennon, and Blood Sweat and Tears.

Tickets can be obtained from any Phi Mu Alpha member or in the lobby of the Fine Arts Building.

Student finds brown eyeglasses

A pair of brown eyeglasses were found on the sidewalk between the New Classroom Building and the Student Union Building. The owner can pick up the glasses at the SIDELINES office, Student Union Building room 100.

Committee seeks new members

The International Interests Committee is now accepting new members. Any student interested should contact either David Burger at Box 7330 or 893-4691 or Harold Smith at the UC office.

Socratics to meet Tuesday

There will be a Socratics meeting, Feb. 8 at 7 p.m. in room 324 of Old Main. All interested in working in the community are invited to attend.



GET
READY!

Lovegrams are coming!

classified
ads

call 898-2815
or write box 42.

personal

☐ Where do university visitors stay?
UNIVERSITY INN-A best Western, 211 N. W. Broad. Shoney's next door. For reservations call 896-1153.

wanted

☐ WANTED: Talented students to entertain between acts at Biology Club Stunt Night. Reward offered. Contact Karen Northcutt, Box 2533 or 898-4662.

for sale

☐ BOOK RACK. Thousands of used paperback books. Trade or buy. West Side Square. 893-2726.

For Sale
Complete Drum Set.
Complete Electric 35 mm. camera kit. Call 896-4751.

For Sale - 1963 Chevrolet. 4 door. 6 cylinder. 2nd owner. \$225. Call Gary Hearn. 890-5326 or Box 2263.



SLACK SHACK

Men's Specialty Shop
109 W. College



Knit Slacks

\$15.00



Slacks

\$7.00



Shirts

\$5.00



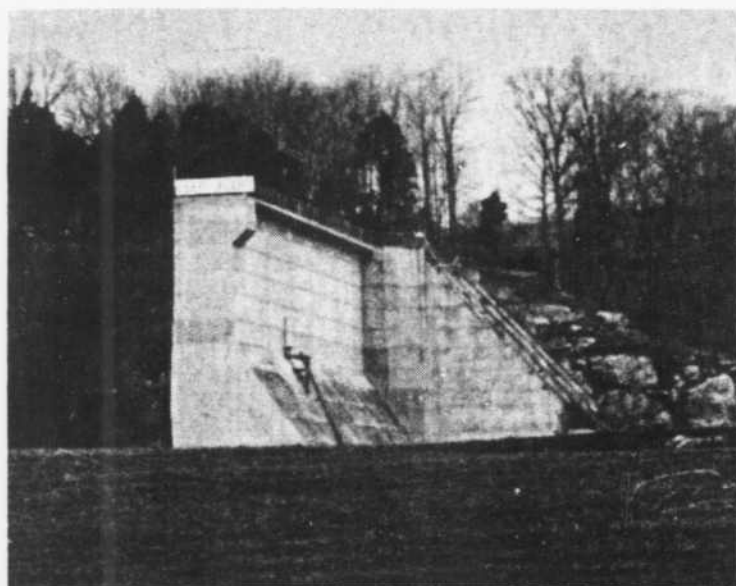
Ties

\$3.00



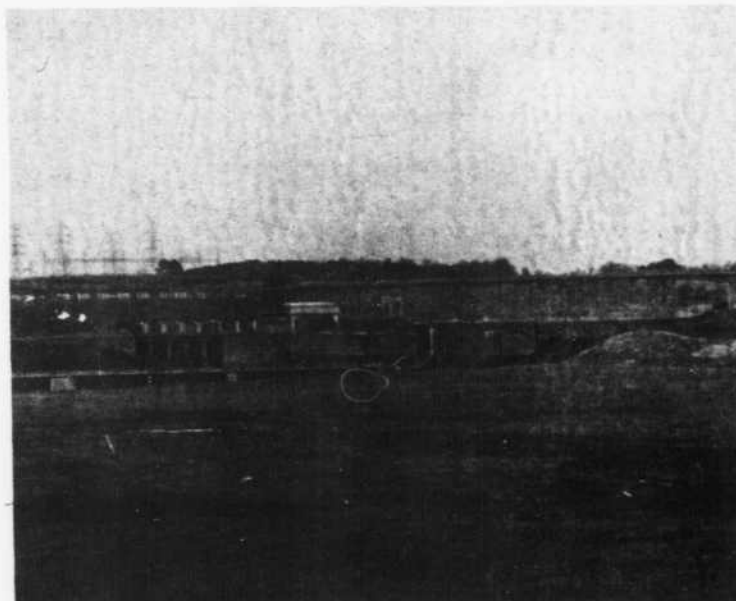
Belts

\$3.00



Tellico. . . a damming project

The unfinished Tellico Dam project, which is located approximately a mile from the Fort Loudon Dam, is accessible only by traveling through nearly a mile of muddy fields.



Decision converts Tellico to TVA nightmare

(Editor's Note: This is the first in a series of articles concerning the controversy over TVA's Tellico dam project).

The object of much controversy in recent months, a suit filed by the Washington-based Environmental Defense Fund, recently resulted in a federal court order which brought the 29-year-old Tellico dam project to a sudden, though possibly temporary halt.

Future installments will concern historical, ecological and economic controversies.

Seldom does a "Dr. Jekyll" such as the Tennessee Valley Authority (TVA) become more of a "Mr. Hyde" than has TVA in its recent attempts to complete its "wolf by the ear" Tellico dam project.

Short victory

Recently the scapegoat of hostilities of many anti-Tellico organizations, TVA had its smooth-flowing "Let's Dam the World" machinery ground to a screeching halt earlier last month when Federal District Court Judge Robert Taylor ordered future construction on the Little Tennessee project temporarily halted.

Stoppage of the 29-year-old

project is a momentary victory for farmers, sharecroppers, and residents of the Little Tennessee River valley whose fertile land will rest on the bottom of the TVA-built reservoir if the project is completed.

Judge Taylor's injunction must also be viewed as a victory for conservation groups like the Environmental Defense Fund, Trout Unlimited, and the Association to Preserve the Little "T"

Indian win

Members of the Cherokee nation, whose most historic tribal centers were to be inundated by the project, along with many sportsmen and history buffs will also interpret the injunction as a step in the right direction.

TVA, on the other hand, has fought the injunction as if in a death struggle. To date, TVA has poured approximately \$30 million into the project, exclusive of work and planning. Total cost projections for the dam's conclusion are estimated at \$69 million.

Originally, the project was to have been constructed in 1943 in conjunction with neighboring Ft. Loudon Dam on the Tennessee River, approximately one mile

from the Tellico construction site.

Congress funds

Congress approved funding for the project at that time, but

News Analysis

Ron Patton

scarcity of materials during WW II forced termination of the project.

Funding was restored in 1966, and construction was completed on the concrete portion of the main dam in 1970. All work on the dam and reservoir are

scheduled for completion in 1975.

Included in the project is the construction of a 1,000-foot canal through which the waters of the "Little T" will be diverted into Fort Loudon reservoir, enabling these waters to pass through the hydroelectric units in Fort Loudon's powerhouse.

Tellico Reservoir will extend 33 miles upstream to the foot of privately-owned Chilhowee. A nine-foot navigation channel will be created for about 30 miles. At normal pool elevation, the waters of the reservoir will occupy 16,500 acres.

TVA benefits

TVA analysts project significant economic benefits for Blount, Loudon and Monroe counties through which the river's waters will flow.

During the course of Tellico's development, TVA's activities have come under scrutiny in an unprecedented manner.

New question

Previously an organization which operated without question and was viewed by most throughout the South as a great benefactor, stemming from the darkest days of the Great Depression as part of Franklin

Roosevelt's New Deal recovery program, TVA's priorities are being questioned.

Will the benefits of the project counter balance the dislocation of nearly 300 families, their churches and schools?

Will the drowning of a picturesque valley with its 183 farms, many of them in the owner's families since the early 1800's, be worth the benefits the Tellico project will accrue?

Will the Cherokee village sites established thousands of years ago form the bottom of a lake despite the protests of the modern Cherokee nation?

Will the project inject new economic life into a rural Appalachian area?

Value estimate

Does TVA today have a vision in which it can justify millions of dollars of expense when there are more oppressed areas in which similarly developed programs have contributed little?

Possibly the fundamental question is a matter of trade-offs. Is the exchange of a picturesque valley and a God-made beautiful river worth the questionable projected industrial and economic improvement that Tellico's completion might bring?

New threat challenges old politician

By Larry Harrington
State Editor

During the 1920's a young Louisiana politician came out of the backwoods as a crusading candidate for that state's Public Service Commission. Huey P. Long carried on the fight after he won the election.

His stand against the big business interests that had been exploiting the state's resources won him a mass following.

Tennessee politicians this year may have begun to recall the potential power of a seat on the Public Service Commission. Controlled by old-line Democrats for years, Tennessee's Commission has not been the object of a vigorous campaign in many years. There are three members on the PSC, one from each Grand Division, East, Middle and West Tennessee.

All the commissioners are well along in years. East Tennessee Commissioner Hammond Fowler, who is up for reelection this year, will be over seventy years old.

But because Republicans ascended to the throne in 1970, Democrats are beginning to see the Commission as a means of maintaining state-wide power, and Republicans see it as another power base to be won from disorganized Democrats.

Perhaps what brings to mind the parallel with Huey Long is the probable entry into the race for the Democratic nomination of Bob Clement, eldest son of the

late Gov. Frank Clement. Clement's age, under thirty, will be an issue as he challenges the elder Fowler.

However, he is getting a lot of support from Democrats who had rather have a candidate who might seem too young than one who looks too old and comfortable in his job.

A more volatile issue is the question of young Clement's residency. Though the commissioners run state-wide, they must come from the Grand Division they represent on the PSC, in this case East Tennessee.

Some Democrats from that region are beginning to challenge Clement as a carpetbagger who only moved to Knoxville in order to run for the East Tennessee seat. Clement answers that even though he is not an east-state native, he has spent most of his adult life there as a student and later as an employee of the University of Tennessee.

The race promises to be one of the hottest in the 1972 Democratic primary. Clement may develop his father's ability for

stump oratory, and Fowler is an equally powerful and tireless campaigner who has scared off many potential challengers.

The most important aspect of a Clement vs. Fowler campaign is that Fowler has always been part of the Clement-Ellington faction. The clash could spell the end of this organization's effectiveness.

At one time it looked as though some other young Democrat from East Tennessee besides Clement would challenge Fowler. But Kingsport lawyer Bruce Shine has lately cooled on the idea of making the race, and may decide to run for national committeeman instead.

Chattanooga has been expected to field a candidate for the PSC post, but so far no one has stepped forward.

On the Republican side, Knoxville state Rep. Richard Krieg will almost certainly be a candidate. For several months he has been sending out press releases criticizing the PSC's decisions on public utility rate hikes.

State Senator Marshall Nave of Elizabethton and Rep. Victor Ashe of Knoxville have also been mentioned as possible Republican candidates. Ashe and Krieg may be put in the same district in reapportionment. If so, one will certainly try for a higher office.

Republicans know that Fowler will be a hard candidate to beat even though his age and tenure on the Commission make him vulnerable. In a race against Clement they would have to depend more on Nixon's and Baker's coattails than on reform issues.

There is one common characteristic among candidates seeking to unseat Fowler. It is not a bad characteristic. It does not mean that they would be poor commissioners. It could make them more diligent. They are politicians, and like Huey Long, they see an active term on the PSC as a possible step to the governor's chair.

Apathy, irresponsibility negate study results

Once again an attempt to clarify student opinion has met defeat to the apathy of the student body and the misadministration of student government.

The questionnaire distributed by ASB on behalf of the Southern Universities Student Government Association has had its credibility at least temporarily, destroyed because of the unwillingness of the majority of the students to respond, the overeager-

ness of a few to see that their preferences predominate the results of the poll to the detriment of a legitimate sampling of student opinion, and the ASB's administrative failures.

The final tabulations for the student referendum at MTSU and the 727 other participating schools are to be sent to President Nixon and all members of Congress. A compounding of

procedures as presented with the university's efforts to poll student opinion would add to the distortions presented to government officials on behalf of the American student. The muddled picture of the new American mind cannot be clarified by the apathetic, the over-zealous or the unconscientious.

The failure of the students to participate has been noted on past editorial pages. This apathy

remains inexcusable. Yet, the failure of the ASB officials to count the votes is inexcusable in the dishonest presentation of speculation as fact.

A student's time, perhaps almost more than anyone's, is precious. The large amount of time needed for the individual officials to complete their tabulations, and their subsequent exasperation is understandable.

Perhaps the solution to this

situation is a student government that involves a broad spectrum of the student population rather than just the minority now participating.

The ASB should seek the widest range of participation. Without doing so, as in any organization, the work of many falls to a few constantly burdened with many responsibilities sometimes resulting in a neglect of accuracy.

Trammel offers pop test

To lead off the spring semester, I am going to get the jump on all your other professors and give you your first Pop Music Exam.

Use the special machine-scoring pencil (not supplied). You have ten minutes for this section. Cheating is encouraged.

So I decided to pass my pent-up hostilities along to you in the form of a pop music final exam. (Now can you dig that?)

The test that follows is unfair, slanted and vague. You have 10 minutes. Use the special machine-scoring pencil (not supplied). Watch out for trick questions.

PART A: WARM-UP. Match the name of the artist with his album.

1. The Silver-Tongued Devil and I
2. Aerie
3. Mud Slide Slim and the Blue Horizon
4. The Low Spark of High-Heeled Boys
5. Maybe Tomorrow
6. Four Way Street

- a. John Denver
- b. Glen Campbell
- c. Traffic
- d. Jackson 5
- e. Crosby, Stills, Nash, & Young
- f. Kris Kristofferson
- g. James Taylor

PART B: ASSOCIATION. Which of the following does not belong?

7. a) Curtis Mayfield b) "Deja Vu" c) Stephen Stills d) Dallas Taylor
8. a) "Jesus Christ, Superstar" b) Deep Purple c) Richard Harris d) Ian Gillian
9. a) Wings b) "Ram" c) Badfinger d) "Imagine"
10. a) Wilson Pickett b) "Fire and Water" c) Free d) Honey Cone d) Delaney & Bonnie

PART C: THE FLICK. Name the artist who performs the score in each of these movies.

12. "Shaft"

13. "Bless the Beasts and Children"
14. "200 Motels"
15. "Rainbow Bridge"
16. "Carry It On"

PART D: GRAMMAR. Add the letter E in the performer's names - only where it is needed.

17. Dionne Warwick-
18. Ann- Murray
19. Gordon Lightfoot-
20. Roy Clark-
21. Carol- King
22. David Fry-

PART E: IDENTIFICATION. Are the following a group or a person?

23. Jethro Tull
24. Rod Stewart
25. Procol Harum
26. Lead Belly
27. Jeff Beck
28. Alice Cooper
29. Pink Floyd
30. Sweetwater

PART F: LAST CHANCE. If you're failing up to here, you can partially redeem yourself by answering one of the following short-answer questions to show that you did after all study.

- A. A famous female songwriter came to prominence in 1971 with an album entitled "Tapestry". What soul group's latest release is called "Soulful Tapestry"?
- B. Take the number of miles in the Peter, Paul & Mary song title. Subtract it from the number in the title of the only single released by Liz Damon's Orient Express. Multiply by Three Dog Night's "loneliest number". What is your answer?
- C. What is the original title of the J. S. Bach composition released under the name "Joy" by Apollo 100?

Offer voting criteria

Ecologists rate Tennesseans' record

In a recently released compilation of congressional voting records the League of Conservation Voters in cooperation with the Friends of Earth may have given Tennessee voters a standard by which to judge the people who represent them in Washington.

The league, which describes itself as a "nonpartisan campaign committee which gives active support to legislators working to protect the environment," took a look at 10 key conservation issues voted on in the last 10 years and rated congressmen and senators according to how they cast their votes.

Rep. Williams Anderson and Sen. Bill Brock were both able to vote on eight of the issues. They each voted on a total of five. Rep. Anderson recorded a plus nine and Sen. Brock tallied a minus eleven.

In 1965 a vote was taken to recommit the Clean Air Act with instructions to delete Title II for research on solid waste disposal. A no vote was a vote against pollution. Anderson voted no and was scored with a plus three.

The next year a bill authorizing the Secretary of the Interior to preserve estuarine areas was presented. A yes vote was a vote for conservation. Anderson voted yes and was given a plus three rating.

The same year a vote to recommit the mass transit act with instructions to limit authorizations to \$150 million in 1968 instead of \$175 per year after 1967 was taken. A no vote was a vote for mass transit. Anderson voted no and was scored with a plus two.

Two years later a vote was taken to recommit a bill creating the San Rafael Wilderness Area. Conservationists voted yes for recommitment because the proposed boundaries in the bill were much too small. Anderson voted no and received a minus two score from the league.

In 1969 there was an indirect vote for \$1 billion clean water appropriation. A no vote would have allowed an amendment to the public works appropriation bill to spend \$1 billion. A no vote was against pollution. Anderson voted no and was scored with a plus three.

By Dennis Frobish

On four of the five issues he voted on, Bill Anderson voted against pollution and for the wellbeing of the people.

Now for a look at Sen. Brock record.

In 1966 a vote was taken to accept Rep. Udall's definition of the Indiana Dunes National Lakeshore. A yes vote was a vote for public parks. Brock voted no and the league gave him a minus three rating.

On the votes to recommit the bills regarding the Mass Transportation Act and the San Rafael Wilderness Area and the bill to appropriate the money for clean water Senator Brock's actions earned him minus ratings in all three categories for a total of minus seven.

Finally, in 1970, on an indirect vote on the SST, he voted not to allow an amendment to the recommitment motion to delete all funds for the plane. A no vote was a vote for the environment and Sen. Brock voted yea. For

this action he received a score of minus three.

In all five votes in which Sen. Brock participated he received minus scores from the league.

The league says that they "judge candidates by their track record rather than by their rhetoric." The voters of Tennessee should also do that when given the chance.

It is interesting to note that

when MTSU students responded to recent survey the single category which received the most choices was indicated that about 90 per cent of those who responded thought the federal government should assume a greater role in environmental pollution matters. Those who represent Tennesseans in Washington should be aware of where their constituencies place their priorities.

SIDELINES

Office, SUB 100 Box 42 898-2815

Rebecca Freeman--Editor-in-Chief
Dennis Phillips--Business Manager

The SIDELINES is published every Tuesday and Friday during the fall and spring semesters by the students of Middle Tennessee State University in Murfreesboro, Tennessee, and is represented by the National Educational Advertising Service, Inc.

The editorial comments reflect the editorial policy of the SIDELINES as determined by the members of the editorial board. Editorial views

do not necessarily reflect the opinion or position of journalism advisers or Middle Tennessee State University and its students, faculty and administration.

The views exhibited through the columns on the editorial pages do not necessarily reflect any opinion other than that of the author.

Subscription rates for the bi-weekly publication are \$2.50 per semester.

Got a Friend?
Sweetheart?
Buy a Red
Long-Stemmed Carnation
for Valentines Day

50¢ each

basement of U.C. Feb. 9 & 10
payment due when ordered

Pick Up On
Valentines Day

8 a.m.
til
4 p.m.

ΔΤΔ LITTLE SISTERS



Raiderscope

Tech prepares for Raider invasion

By Wally Sudduth
Sports Editor

simple at Tech) to instigate the Eagle supporters into the very type behavior Inman says he was subjected to on the road.

"The Oracle" says "Debris was thrown on the playing floor and several warnings had to be given to the home(MTSU) crowd. There was even one spectator who ran out on to the playing area during the game to congratulate a Tech player when he missed a shot."

There were no warnings to the crowd from the officials during the varsity game, nor was any perceptible debris thrown on the playing floor. This writer has polled various witnesses to the game and none (coaches, press or fans) remembers any fan shaking hands with a Tech player.

On the contrary, however, on last year's MTSU trip to Tech, Eagle center and comic conference bad-boy, Maury Schwegman, did indeed proceed with an unprovoked attack upon the MTSU manager during the game. This year Schwegman was ejected from a game for an unprovoked attack upon an Eastern Kentucky player.

It would seem that the shoe might very well be on the other foot, considering these actions and other fan actions in the past (1965?).

Last Monday night's action left the conference race in a turbulent state. Eastern Kentucky absorbed their second conference defeat at home at the hands of the previously lightly regarded Bucs of East Tennessee. Leonard Coulter did in Tech with his 42 points, while Western's win gave them a share of the lead with Eastern.

The co-leaders are now 4-2 while MTSU, Morehead and Tech are tied for third at 3-3.

Another logjam is for sixth with Austin Peay (going down after a fast start) and ETSU (coming up after a slow one) in a dead heat with Murray, which with the return of Les Taylor is definitely going up, for the cellar.

Some of the heat will be generated here in Alumni Gym tomorrow night as Western comes in with their share of the lead at stake.

The Toppers usually bring from two to five busloads of

fans down for the freshman game which will precede the varsity contest. The frosh contest starts at 5:15, so a warning to the few MTSU fans: get there early. Last year they stopped selling tickets at 7 p.m., thirty minutes prior to varsity gametime, according to Sports Information Director, Jim Freeman.

The continued rapid improvement of big junior center Chester Brown took a leap toward the incredible Wednesday night against St. Francis. Big Ches, previously much maligned for lack of aggressiveness and a haphazard approach to ballhandling, is the single biggest news item in the Raider camp.

Prior to the season, it was acknowledged that Brown held the key to the season, since he was the only starter over 6-3 and the only man on the squad over 6-7.

Well, the gut play of the host of unsung heroes gave the Raiders a 10-5 record going into the last game, as Brown improved perceptibly. His 35 points, the most since Jimmy Drew's outburst against Tech during the '69-70 season, and the 18 rebounds shows the talent. Now if the big man continues at his present rate of improvement, Big Blue fans will have many pleasurable evenings watching a premier center ply his trade.

Averaging a steady 12.2 points and nine rebounds going into the game may not sound too impressive, but remembering the Blue ball-control offense and pressure defense which does not allow an inordinate amount of shots by either team, may give the fan an insight into the magnitude of Brown's latest performance.

Future performances along the same line will ensure a Raider winner this year, only the second since 1952 and the second during the three year tenure of Coach Jimmy Earle.

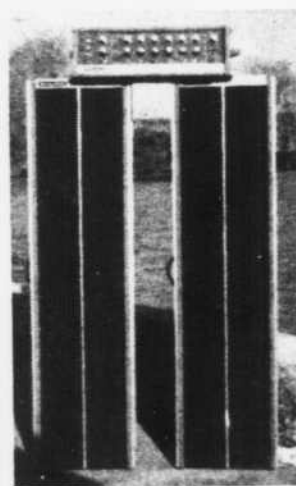
MTSU signs Kolka

Leigh Kolka, a 6-3, 185 pound quarterback from Plano, Ill., has signed an OVC grant-in-aid with MTSU. The All-Conference, honorable mention All-State and team's Most Valuable Player was signed by Raider assistant Jim Finley.

Kolka directed Plano to a 7-1 record and conference title, completing 69 of 128 passes for 14 touchdowns and six extra points. He also did the punting, averaging slightly over 35 yards per punt.

Kolka also is averaging 20 points per game on the basketball team and was an All-League catcher.

For Sale:



Shure Vocal Master
P.A. System

Call: 893-3604

— MOTOROLA —
★ QUASAR ★
FEATURING
INSTANT TUNING
See Us Before You Buy
100 financing on approval

SERVICE:

- Stereos • Tape Players
- Car Radio • Hi Fi

All makes & models
of T.V. repairs

Open 8-6 — 6 Days Wk.

Day — 896-5960

Night — 896-9086

MURFREESBORO
T.V. & APPLIANCE

1603 Murfreesboro

It's the real thing. Coke.

Real life calls for real taste.
For the taste of your life—Coca-Cola.



"Coca-Cola" and "Coke" are registered trade-marks which identify the same product of The Coca-Cola Company.
Bottled under the authority of The Coca-Cola Company by: Murfreesboro Bottling Works

Earle lauds team for win

Coach Jimmy Earle, addressing a meeting of the Blue Raider Club on Thursday afternoon, had praise for players and assistant coaches and almost everyone connected with the Raider basketball program after the previous night's upset win over St. Francis.

Earle began his remarks by crediting the reserves, notably Larry Rainey and Bubba Yarbrough, with being responsible to a large degree for the esprit de corps which is readily apparent on the Big Blue club these days.

"This is the guttiest team I've ever been associated with," continued Earle. "Our assistants (Don Beasley and Ken Brackett) are doing a tremendous job of

scouting and preparing the players for these games," noted Earle, "and they communicate with the players."

The third-year head mentor was also quick to praise the leadership ability of junior Captain Jim Drew on the floor. With the usual touch of Earle's hesitancy about making predictions, the Blue leader remarked, "We just may beat Western," concerning the upcoming game with the conference co-leaders.

Western first-year Head Coach Jim Richards commented, via a taped telephone conversation, about the mad scramble in the OVC.

On his latest conference wins: "We just happened to be ahead when time ran out, we could just

as easily have lost both the Murray and Morehead games."

Asked about the Raiders, the voluble Western mentor remarked: "They have a very, very fine basketball team. It is greatly improved since last year. Coach Earle and his staff deserve to be named 'Coaches of the Year' in the OVC."

"As scrambled as it could possibly be, any team can beat any other ball club on a given night," were the young Richards' comments regarding the current and future condition of the conference race.

The two coaches and their teams clash in Alumni Memorial Gym Saturday night with a share of the league lead at stake.



It takes two

Nick Prater shoots a jump shot over St. Francis' Bill Stevens.

Raiders trip Frankies

Chester Brown propelled the Blue Raiders past St. Francis here Wednesday night for an 81-73 overtime win. The big Clanton, Ala., junior ripped the nets for 35 points and snared 18 rebounds, career highs in both categories, to lead the offensive and defensive charge.

The Big Blue defense held the Frankies scoreless for an incredible 9:06 of the game including the five-minute overtime period.

In a game billed as offense vs. defense, the defense won as the Raiders held St. Francis 22 points below their average while scoring 11 above the current Blue per game average.

Quick, speedy and high-scoring Kevin Porter equalled his season average to lead the Frankie scoring with 27 points. Back-court runningmate Joe Hazinsky poured in 24 points to aid the Pennsylvanians' cause.

Leading by a single point at the half, 44-43, St. Francis went to a 2-1-2 zone and took a commanding 14-point lead with 12:05 remaining in the contest. A guard adjustment by the Raiders to gap the zone allowed penetration, and Brown collected 10 points during the next six minutes to bring the Blue within two.

After Jimmy Drew knotted the contest at 73-all with 3:45 remaining, the Raiders regained possession and worked cautiously for a shot, forcing the Frankies to foul.

MTSU had opportunity after opportunity to win in regulation time go down the drain as the Raiders missed the front end of two one-and-ones, both of a two-shot foul with two seconds remaining and a rebound shot at the buzzer.

With the game out of reach, the Frankies fouled both Sykes and Brown again during the last six seconds, and the pair connected on all four tosses to account for the Raider's overtime scoring.

Besides Brown's 13-20 from the field and 9-13 at the line performance, Sykes and Drew chipped in 13 points each, and Terry Johnson contributed 11 markers.

After allowing 44 points in the first half, the Raider defense clamped down and held the Frankie scorers to 29 points over the last 25 minutes, including the overtime.

STONE'S RIVER REST

Welcomes

MTSU Students

HAPPY HOUR 6-8

Mug 25¢

Pitcher \$1.25

8-Track Stereo Tapes \$3.98

Jimi Hendrix

Janis Joplin

Issac Hayes

many others

Contact

Ohio Knox III

896-4052

BUTCHE'S JEANS

CAME ON THE SCENE IN '71

NOW SEE WHAT'S FOR YOU IN '72

STYLES ARE GREAT AND BUTCH HAS THEM!

Banshee
STYLING
IS THE
TOUGH ONE

IN
OLD WORLD
FABRICS & COLORS

ACTION KNITS
IN
BELLS & FLAIRS
STRAIGHTS

Levi's

BUY'EM
BECAUSE
YOU LOVE'EM

BUTCH JEANS

STYLES FOR THE SCENE

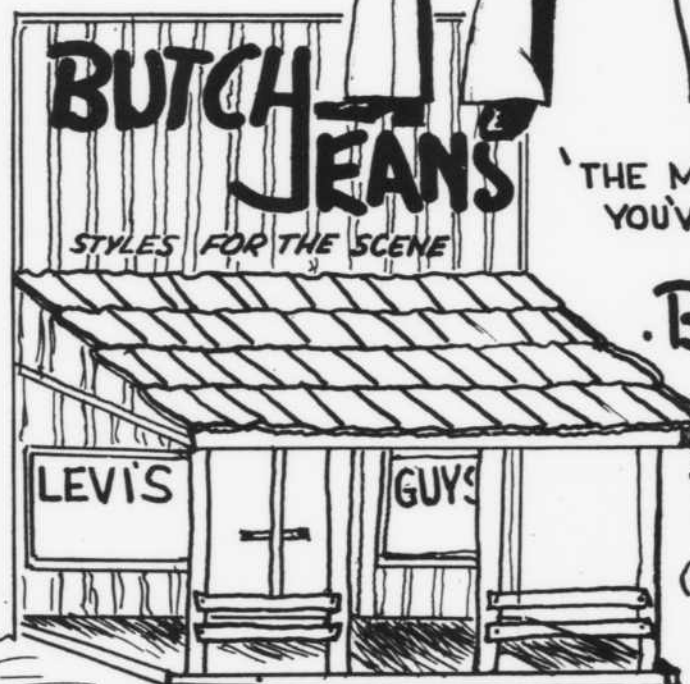
'THE MOSTEST JEANS
YOU'VE EVER SEEN'

BUTCH'S JEANS

JACKSON HEIGHTS
SHOPPING CENTER

(ON THE SOUTH END)

OPEN 9 TO 9

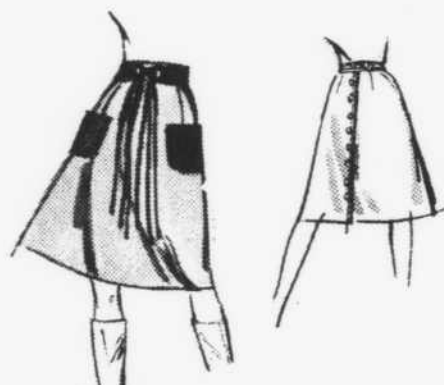


OPEN
NIGHTLY
'TIL 9:30

Ann Herbert

ANNUAL AFTER INVENTORY CLEARANCE SALE

OPEN EVERY
SUNDAY
12:30-6:00



SKIRTS

POLYESTERS—ACRYLICS—WOOLS
A-LINE • STRAIGHTS • SCOOTERS
ALL LENGTHS
REGULAR \$8⁹⁹ to \$14⁹⁹

\$3⁹⁹
OUT
THEY
GO!

BLOUSES

HUNDREDS IN ALL
SIZES—STYLES—COLORS
WHAT A SAVINGS!

EXAMPLES

FLAME STITCH

Regular \$12⁹⁹ **\$3⁹⁹**

FAMOUS LABEL PUCKER

Regular \$13⁹⁹ **\$4⁹⁹**

FAMOUS LABEL POLYESTER PRINT

Regular \$16⁰⁰ **\$6⁹⁹**

ENTIRE STOCK COATS

ALL LENGTHS CASUAL and DRESSY

50%-65% OFF

SAVE
50% 75%
HOLIDAY and FALL
DRESSES

\$1⁴⁹

KNIT TOPS

SOLIDS—PATTERNS—NOVELTIES
Originally \$2⁹⁹ to \$7⁰⁰

\$2⁹⁹

PANT SUITS

HERRINGBONE POLYESTER
Regular \$19⁹⁹

\$9⁹⁹

LAMBSWOOL—ANGORA NYLON BLEND
Regular \$36⁹⁹

\$13⁹⁹

THREE PIECE POLYESTER KNIT
Regular \$58⁰⁰

\$24⁹⁹

ENTIRE STOCK OF

PANTS

JEANS

Reg.
\$9⁹⁹-\$14⁹⁹

\$4⁹⁹

GEOMETRIC PATTERN POLYESTER

PULL-ON

\$6⁹⁹ Regular \$18⁰⁰

**ROBES
SLEEPWEAR**

**1/2
PRICE**

SWEATERS

Regular \$14⁹⁹
NOW

\$3⁹⁹

OPEN NIGHTLY UNTIL 9:30 OPEN SUNDAY 12:30-6:00

Ann Herbert

MURFREESBORO MEMORIAL VILLAGE