

CONFUCIUS INSTITUTE AT MIDDLE TENNESSEE STATE UNIVERSITY

CIMTSU

MIDDLE
TENNESSEE
STATE UNIVERSITY



Ten things *you should know*

**MIDDLE
TENNESSEE**
STATE UNIVERSITY



1

MTSU is a destination school—the No. 1 choice of Tennessee undergraduates—and has some of the highest entrance requirements of any public university in the state.



2

MTSU offers more than 140 undergraduate programs in eight colleges: Basic and Applied Sciences, Behavioral and Health Sciences, Business, Education, Liberal Arts, Mass Communication, University Honors, and the University College. The College of Graduate Studies oversees more than 55 programs, including doctoral study.

3



“Best Buy” and “Best Bang for Your Buck”—that’s what *Forbes* magazine and *The Princeton Review* have said about MTSU.



4

MTSU generates \$896 million in business revenue within the Nashville Metropolitan area and is responsible for creating \$396 million of revenue in Rutherford County.

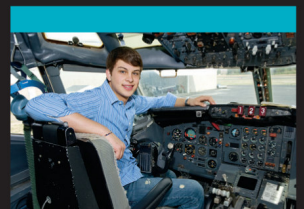
Three Nobel Prize winners have associations with MTSU: alumnus Dr. James Buchanan ('41) and faculty members Dr. Muhammad Yunus and former Vice President Al Gore.

5



6

One of the finest teacher preparation institutions in the southeast, MTSU continues to be among the very top producers of teachers in Tennessee, graduating close to 500 each year. More than 30 percent of our living alumni work in education.



MTSU's Aerospace program has a fleet of more than 40 airplanes equipped with the latest technology and is considered one of the nation's finest.

7

8

The Recording Industry program in the College of Mass Communication is nationally known for state-of-the-art labs and is “one of the nation's elite recording programs” according to *Billboard* magazine.



9

The Jennings A. Jones College of Business is one of the largest in the nation with over 3,600 majors. More than 400 students are pursuing the M.B.A., the Masters in accounting and information systems, the M.B.E., or the Ph.D. in economics.



10

A member of Conference USA, MTSU competes at the highest level in all 17 intercollegiate sports. Blue Raiders have competed successfully in both the professional ranks and the Olympics.



www.mtsu.edu



**MIDDLE
TENNESSEE**
STATE UNIVERSITY



CIMTSU STAFF

DR. SIDNEY A. MCPHEE
President
Middle Tennessee
State University
Chair
CIMTSU Advisory Board

DR. DU WEI
President
Hangzhou Normal University
Co-Chair
CIMTSU Advisory Board

DR. GUANPING ZHENG
Director
Confucius Institute
Middle Tennessee
State University

MR. YIPING CUI
Associate Director
Confucius Institute
Middle Tennessee
State University

DR. BRAD BARTEL
Provost
Middle Tennessee
State University

MR. ANDREW OPPMANN
Vice President
Marketing and
Communications
Middle Tennessee
State University

DR. DAVID SCHMIDT
Vice Provost
International Affairs
Middle Tennessee
State University

**Confucius Institute
at MTSU (CIMTSU)**

P.O. Box 114 106 Peck Hall
Middle Tennessee State University
Murfreesboro, TN 37132
Phone: 615-494-8696
www.mtsu.edu/cimtsu
cimtsu@mtsu.edu

CONTENTS

I AM *true* **BLUE**



PAGE 6 PART 1

CHINESE LANGUAGE PROGRAMS

Major accomplishments of CIMTSU / Chinese teacher in school / Long-distance language program / Paper-cut and learning in campus school / Summer camp at CIMTSU



PAGE 12 PART 2

CULTURAL ACTIVITIES

Annual Cultural Meal / Annual Dragon Boat Festival / Chinese Spring Festival Gala / Boys and Girls Club / Calligraphy workshop / Centennial Park cultural activities / Chinese artist visits MTSU / Chinese Night at Thomas Magnet School / Chinese tea workshop / CIMTSU Fantasy of China / Martial arts performance / "Song of Silk" / Xiamen University troupe



PAGE 22 PART 3

KEY PROJECTS

Chinese language conference / Confucius Institute scholarship / HSK and YCT testing / Summer camps / Visits to China



PAGE 26 PART 4

OTHER EVENTS

CI grand opening / MTSU's Centennial Gala / Jim Sasser visits CIMTSU / MTSU president McPhee's book launch



PAGE 32 PART 5

2013 DIRECTOR GENERAL'S VISIT

PAGE 36 PART 6

2013 DELEGATION FROM CHINA

PAGE 40 PART 7

2013 MTSU ADMINISTRATION'S VISIT TO CHINA

1113-0706 / Middle Tennessee State University is an AA/EEO employer and does not discriminate on the basis of race, color, national origin, sex, disability, or age in its program and activities. The following person has been designated to handle inquiries regarding the non-discrimination policies: Executive Director of Institutional Equity and Compliance, 1301 E. Main Street, CAB 220, Murfreesboro, TN, 37132; 615-898-2185; Barbara.Patton@mtsu.edu.

A TENNESSEE BOARD OF REGENTS INSTITUTION 500 COPIES PRINTED

CONFUCIUS INSTITUTE

INTRODUCTION

Confucius Institute is a nonprofit organization to provide Chinese language learning opportunities and to promote the understanding of Chinese culture in countries outside of China. Confucius Institute is named after Confucius (551 - 478 B.C.)

whose philosophy and teaching have influenced China and other East Asian countries for over 2500 years.

The Confucius Institute at Middle Tennessee State University (CIMTSU) was established in partnership with Hangzhou Normal University (HNU) of China, with the sponsorship and authorization of the Office of Chinese Language Council International (Hanban), under the Ministry of Education, China.

The mission of CIMTSU is to enhance the understanding of Chinese language and culture, facilitate engagement with China and create opportunities for exchange and collaboration between communities in Tennessee and China. The institute seeks to become a hub for China-related activities and a resource center for Chinese language, history, contemporary society, and culture.

Preparation for Teachers of Chinese

To meet the demand for qualified Chinese language teachers, CIMTSU coordinates a teaching certificate program and recruits volunteer Chinese language teachers from China to teach at K-12 schools. It offers culture awareness training and professional development opportunities for teachers of Chinese.

Chinese Language Courses

CIMTSU offers different levels of Chinese language courses such as introduction to Chinese, business communication and tourism conversation. It also provides courses for children from Chinese Heritage families to study Chinese and learn about Chinese culture.

Chinese Language Test

CIMTSU is the designated institute to host the Chinese Proficiency Test for adults (HSK) and children (YCT). It provides related services in preparing and administering the test. HSK (Hanyu Shuiping Kaoshi) is a standardized test designed to assess Chinese proficiency for nonnative speakers. The YCT (Youth Chinese Test) is a standardized international Chinese



proficiency test directed at examining nonnative primary and secondary school students' capability in applying Chinese language in their studies and personal lives.

K-12 Outreach

CIMTSU provides teaching resources and offers assistance to interested pre-K and K-12 schools in developing Chinese language programs. It organizes summer camps for K-12 students and provides opportunities for immersive Chinese culture experience. It also helps forge collaborations between schools in middle Tennessee and China.

Seminars, Workshops and Culture Events

CIMTSU uses various platforms for promoting better understanding of Chinese people, culture, and society. Seminars and workshops aimed at general audience and special groups seek to enhance cross-culture communication and promote collaboration. Events that showcase Chinese culture such as film screenings, performances, exhibitions and holiday activities are also part of CIMTSU's function.

Travel and Study

The Confucius Institute at MTSU provides study-abroad and other travel opportunities for students, educators and professionals to China to enhance language and cross-cultural communication skills and to initiate or strengthen exchange and collaboration between the two nations.



Vice Minister Xu Lin of China (center), director general of the Confucius Institutes, visited CIMTSU in 2013. See story on page 32.

办学规模快速增长 自建院以来,我们积极开拓,到 2013 年 11 月为止,我们已经有 9 个教学点,外加孔子学院本部和远程汉语教学中心。我们的远程中文项目,覆盖整个田纳西州,全州都可以现场观看,也可以从网上下载观看。这 9 个教学点分布在田纳西州 7 个不同的郡,注册学生总数已经达到 2000 人,是 2012 年的 1.5 倍;2013 年,9 个教学点和孔院本部共举办各类文化活动有 25 场,共有 7000 多人参加各类文化活动,比 2012 年增长 30%。此外,本学年已经确定 2014 年 7 月,新增教学点 4 个,新增教师 7 名。

Rapid Expansion of CI Operation: CIMTSU has experienced a quick expansion of its operation since it was established in April 2010. In addition to its core course offerings at the MTSU campus, CIMTSU extends its program through a teaching via satellite TV and Internet. The long-distance Chinese teaching program at CIMTSU covers the entire state of Tennessee. Students can watch live Chinese-language programs or download them from a website. CIMTSU established nine Chinese programs in different educational institutions located in seven counties in Tennessee. The number of registered students exceeds 2,000, an increase of 150% since 2012. In 2013, CIMTSU center and nine other teaching sites hosted 25 cultural activities, which attracted more than 7,000 people, a 30% increase compared with that of 2012. We expect four more Chinese programs to be established in July 2014 with seven teachers.

总部重大项目 我们较为圆满地完成如下重大项目:a) HSK 和 YCT 考试,为方便考生,我们在中田纳西和东田纳西地区共建了 6 个考点,今年的参加 HSK 和 YCT 考试人数超过 200 人,比 12 年有了一个很大进步;b) 组织“汉语桥夏令营”和“田纳西教育领导者访华团”c) 孔子学院奖学金,我们共推荐 21 名学生获得孔子学院奖学金,13 年我们推荐了 4 名,预计 14 年将授予 8 位 MTSU 学生孔子学院奖学金;d) 和州教育厅和 MTSU 教育学院合作,正在完成教师执照的最后工作,麦克菲校长为此事联络了好几位政府官员。我们与 MTSU 教育学院、州教育委员会和教育厅举行了多次会议,已取得重大进展。e) 积极组织大型文艺演出。如汉办选送的北京体育学院组织的中华武术表演以及我们自己组织的为国际妇女研讨会举办的文艺演出“茉莉花香”,以及其它小型的表演。这类活动在当地产生了很好的影响。

Key Projects Implemented by CIMTSU: We have accomplished successfully the following key projects: a) HSK and YCT: We have established six testing sites in Tennessee. The number of participants exceeds 200, a significant increase from last year. b) We organized the Chinese Bridge Summer Camp and the Tennessee Education Leadership Delegation. c) CIMTSU has sent 21 students to China on full CI Scholarship, including four in 2013. We expect to award another eight CI Scholarships in 2014. d) CIMTSU is finalizing the Teacher Licensure issue in cooperation with the State Education Department and the College of Education at MTSU. President McPhee has engaged several key federal officials and legislators to resolve this matter and we made significant progress after several meetings with the MTSU College of Education, the State Education Board and State Education Department. e) CIMTSU successfully hosted the “Martial Art Spectacular” performance by Beijing University of Sports and Physical Education, and the “Scent of Jasmine” music and dance performance conducted for the International Women’s Symposium, as well as other small culture and art performances in the community. Such culture showcases enjoyed great attention and praises from the community.

孔子学院融入大学 中田纳西州立大学孔院很好地融入美方大学 和当地社区,融入了美方大学的使命,成为美方大学全球战略的一个重要组成部分,主要体现在如下几个方面:a) 孔院积极支持美方大学的帮助学生取得成功的倡议和服务社区的努力;b) 孔子学院申请成

立 China Study 的辅修专业, 融入大学的专业学习体系; c) 孔子学院协调了校园内所有有关中国的活动, 包括和广西药用植物园的独特关系和中草药方面的研究。d) 孔子学院在每年的“海外学习”项目、全州的“招生宣传”、“TESOL”项目以及学校的国际接待等方面担任重要角色; e) 每年一次的中国文化饮食节, 每学期连续 4 周的中国电影之夜, 以及经常性的讲座, 不仅给国际学生, 也给附近的社区民众提供了解中国的机会。f) 为大学和社区开设了各类非学分汉语课程 12 门, 提供从零起点到高级汉语的一条龙教学服务。孔子学院这些活动服务了大学和社区, 为学生和社区民众学习汉语提供服务, 丰富了校园和社区生活。g) 孔子学院是中国访问学者的中心, 帮助他们适应校园生活和美国文化。此外, 孔院院长参与国际教育及其它大学事务的决策, 是大学管理的成员之一。美方院长是大学资深教授, 与各学院有很很好的人际关系, 使得孔院同大学各部门有很好的合作。

The Integration of Confucius Institute into MTSU: Confucius Institute at MTSU has been successfully integrated into the mission of the university. It is an important part of MTSU's global strategy and is most evident from the following aspects: a) CIMTSU actively supports the university's student success initiatives and efforts to serve the local community; b) CIMTSU has integrated into the MTSU academic system by initiating the China Studies Minor; c) CIMTSU has assumed an administrative coordination role for all China-related activities on campus, including our exclusive relationship with Guangxi Botanical Garden of Medicinal Plants and the work being conducted by the Tennessee Center for Botanical Medicine Research at MTSU; d) CIMTSU plays an integral role in MTSU's Study Abroad Project, the True Blue Tour for undergraduate recruitment, the TESOL project and coordination of visits by top administrators from China; e) CIMTSU organizes public activities such as the annual Chinese Cultural Meal, the China International Film Series each semester, and frequent China-related lectures; f) CIMTSU provides MTSU students with 12 non-credit Chinese courses at different levels; g) CIMTSU serves as the focal point for all incoming Chinese scholars and visitors, helping them acclimate to campus life and American culture. All these activities, including Chinese courses designed by Confucius Institute for students and local residents, serve the campus and the community. Also, the CIMTSU Director is a well-respected professor with excellent relationships with faculty and the administration; these relationships ensure good partnerships with all other academic and administration units across campus.

研究成果和“新汉学计划”的落实 经过孔子学院和汉办的大量协调工作, 麦克菲校长的新作《一个美国大学校长眼里的中国》顺利出版, 该书在中美两国广泛发行, 记载了麦克菲校长 10 年访问中国的经历和感受, 在美国读者中产生了很好的影响, 并在中美媒体中引起广泛关注。我们积极宣传总部的“新汉学计划”, 重点放在有具体研究项目的中美合作研究上, 已经 1 名教师向我们递交了研究计划, 我们等待总部的政策确定后, 立刻全面启动这项工作。

Research Results and the Implementation of “Confucius China Studies Program: President McPhee's most recent book, “China: Through the Eyes of an American University President,” was published through the coordinated efforts of Hanban and CIMTSU. The book, widely circulated in China and the U.S., captures his experiences and photographs of his visits to China during the past decade. China's foreign ministry selected the book as a significant cultural presentation during 2013. The book, along with signing events by the President, has attracted crowds in China and U.S. and attention in media in both countries. We advocate actively the “Confucius China Studies Program,” designed by the Confucius Institute Headquarters. Our effort has generated faculty interest; one professor submitted a proposal to CIMTSU for funding.



CHINESE TEACHER IN DISCOVERY SCHOOL

Chinese instructor Li Hui conducting a Chinese class at the Discovery School.

PART 1: CHINESE LANGUAGE PROGRAMS

Since the establishment of CIMTSU in April, 2010, our Chinese-language programs have increased at a steady pace. Up to September 2013, we have been offering Chinese language courses in nine different primary or preschool educational institutions apart from the weekend and after-school noncredit Chinese language courses and Chinese language and culture courses at local schools and CIMTSU. We also collaborated with the MTSU Instructional

Technology Support Center to provide live Chinese language instruction to learners across Tennessee.

More than 2,000 people have registered as Chinese language learners in the institutions sponsored by CIMTSU. The number of Chinese instructors at CIMTSU increased from one in 2010 to 10 in 2013. We have been administering HSK and YCT tests of all different levels to CI students as well as people in the community.



LONG-DISTANCE LANGUAGE PROGRAM

Since 2011, CIMTSU collaborated with the MTSU Instructional Technology Support Center to offer live and online Chinese language learning across the state of Tennessee.

Above: Chinese instructor Zhang Yu (right) telling Chinese New Year stories in the studio classroom. The program is broadcast live across Tennessee.

At right: Chinese instructor Tang Qiuyan conducts a Chinese lesson in the studio classroom.



Above: Chinese instructor Zhang Yu (right, back row) in a group photo with her long-distance students and parents. At left, Tang Qiuyan gives a lesson in the studio classroom.

PAPER-CUT AND CHINESE LEARNING IN CAMPUS SCHOOL



Students at Homer Pittard Campus School learning Chinese language and culture.



CIMTSU students displaying their paper-cutting handicraft.



SUMMER CAMP AT CIMTSU





ANNUAL CULTURAL MEAL

CIMTSU staff members, Chinese visiting scholars, and students serving the food they cooked for international students and others. The annual event is jointly sponsored by the Intercultural and Diversity Affairs Office and CIMTSU.

PART 2: CULTURAL ACTIVITIES

Organizing and sponsoring a great variety of Chinese cultural activities is one of CIMTSU's major endeavors to reach the local community and provide a unique cultural experience for them. Each year we hold over 20 cultural activities in different locations. Some of the most influential activities organized by us are:

The annual Nashville Chinese Spring Festival Gala, which featured Hangzhou Performance Troupe (2010)

Xiamen Performance Troupe (2011)

Song of Silk from Performance Troupe of Binghamton University (2012)

Fantasy of China by CIMTSU (2012)

Dragon and Lion Dance Performance

Troupe from Hubei University (2012)

Chinese Martial Arts Performance Troupe from Capital University of Physical Education and Sports

Chinese Movie Series Festival, Chinese Cuisine Festival, Dragon Boat Festival, Chinese tea workshop, Chinese painting demonstration, China Studies Lecture series, Chinese Night at Discovery School, China Day at Homer Pittard Campus School, Tomas Magnet School, Pond Gap School, Boys and Girls Club and the Discovery Center of Murfreesboro; all these activities attracted a large number of audiences in the local community.



ANNUAL DRAGON BOAT FESTIVAL

*Above: CIMTSU participating in the 2012 Dragon Boat Festival
At left: CIMTSU at the 2012 Dragon Boat Festival.*



**CIMTSU
AT 2013
CHINESE
SPRING
FESTIVAL**



BOYS AND GIRLS CLUB

Students of Du Yanping, CIMTSU Chinese instructor, proudly display dumplings they made.



CALLIGRAPHY WORKSHOP

Calligraphy workshop conducted by Guanping Zheng, director of CIMTSU



CENTENNIAL PARK CULTURAL ACTIVITIES

People loved the panda in front of the CIMTSU booth at a multicultural event at Centennial Park.

CHINESE ARTIST VISITS MTSU

Chinese artist Liu Yong (left) demonstrates Chinese traditional painting to MTSU students.

中国文 化 之 夜

Students from Thomas Magnet School perform during Chinese Night.



Students from Thomas Magnet School practice using chopsticks and paper-cutting.

CHINESE NIGHT AT THOMAS MAGNET SCHOOL



CIMTSU instructors and staff give a Qipao display at Chinese Night at Thomas Magnet School.



CHINESE TEA WORKSHOP AT CIMTSU

*Need cutline info for
lskdfmlksdmfssssss
sglksndlkgnldlgknss
sglksndlkgnslssssss
sglksndglsndlgkssss
slkgnldkgnlskdgns.*

CIMTSU FANTASY OF CHINA

Zheng Shan, HNU exchange student, playing Gu Zheng, a traditional Chinese musical instrument at "Fantasy of China," a show staged by CIMTSU.



Taiji Master Zhou Zhihua teaches tai chi to the audience during the performance break.



Sword art display at CIMTSU by the performer Yao Yuan



MARTIAL ARTS PERFORMANCE



Pictured here and at top left: Sword art display at MTSU by CUPES performer Li Fengfei during a Martial Art Performance Capital University of Physical Education and Sports.



"SONG OF SILK" AT MTSU

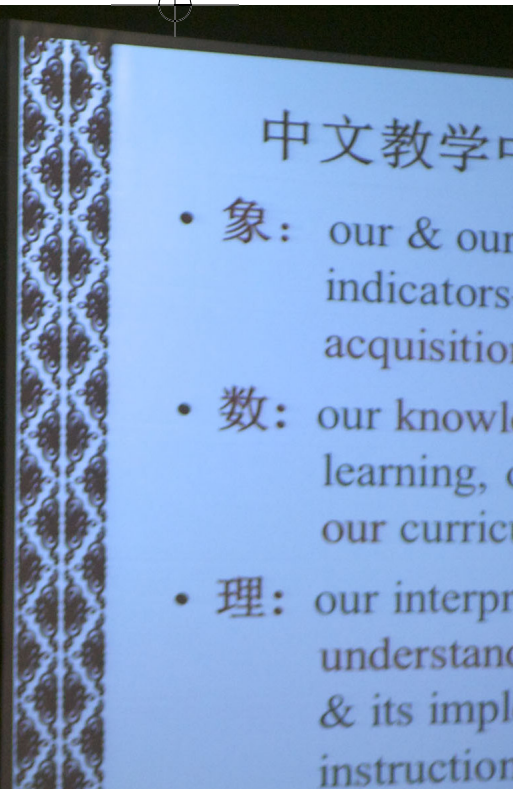
Above: Performers from the Confucius Institute at Binghamton University after their show "Song of Silk" at MTSU.



XIAMEN UNIVERSITY TROUPE

MTSU students trying some Chinese musical instruments under the guidance of Professor Li Kunli (third left) from Xiamen University.

Middle Tennessee State University



CHINESE LANGUAGE CONFERENCE

Ms. Shen Ping, the Chinese language instructor from MLK Magnet High School, giving a presentation at the 2012 Southeast Chinese Language Association Conference hosted by CIMTSU.



Shelley Thomas (right), MTSU professor, gives a demonstration of TPR at the conference.

PART 3: KEY PROJECTS

CIMTSU undertook a number of key projects sponsored by the Confucius Institute Headquarters. These projects mainly include:

Annual high school students summer camp in China

Annual Tennessee Educational Leadership Delegation's visit to China

Study abroad program of KIIS(with self-collected funding)

MTSU College Student Art Performance Delegation visit to China (2012), sponsored by Hangzhou Normal University

Sino-US Educational Leadership Symposium held in Hangzhou Normal University (2011, with self-collected funding);

Discovery School Primary School Students' visit to China (2012)

Dongchen Education Group's visit to MTSU (2013)

Hosting Southeast Chinese Language Association Conference (September 2012)

Administering HSK and YCT tests of all different levels

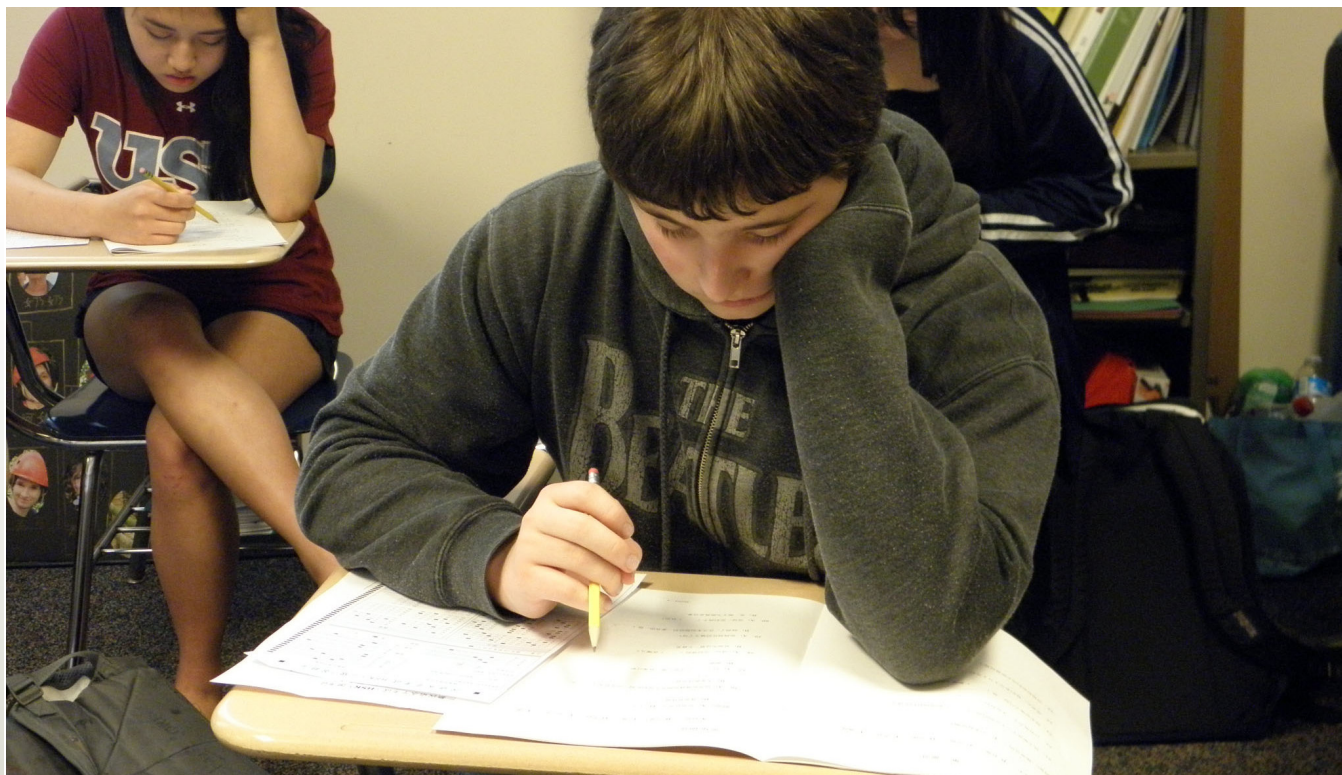
Annual Confucius Institute scholarship programs

CONFUCIUS INSTITUTE SCHOLARSHIP

*Eli Ballard, 2011 CI
scholarship student, in
ancient-style Chinese
attire and ready to
attend a traditional
Chinese show.*

HSK AND YCT TESTS

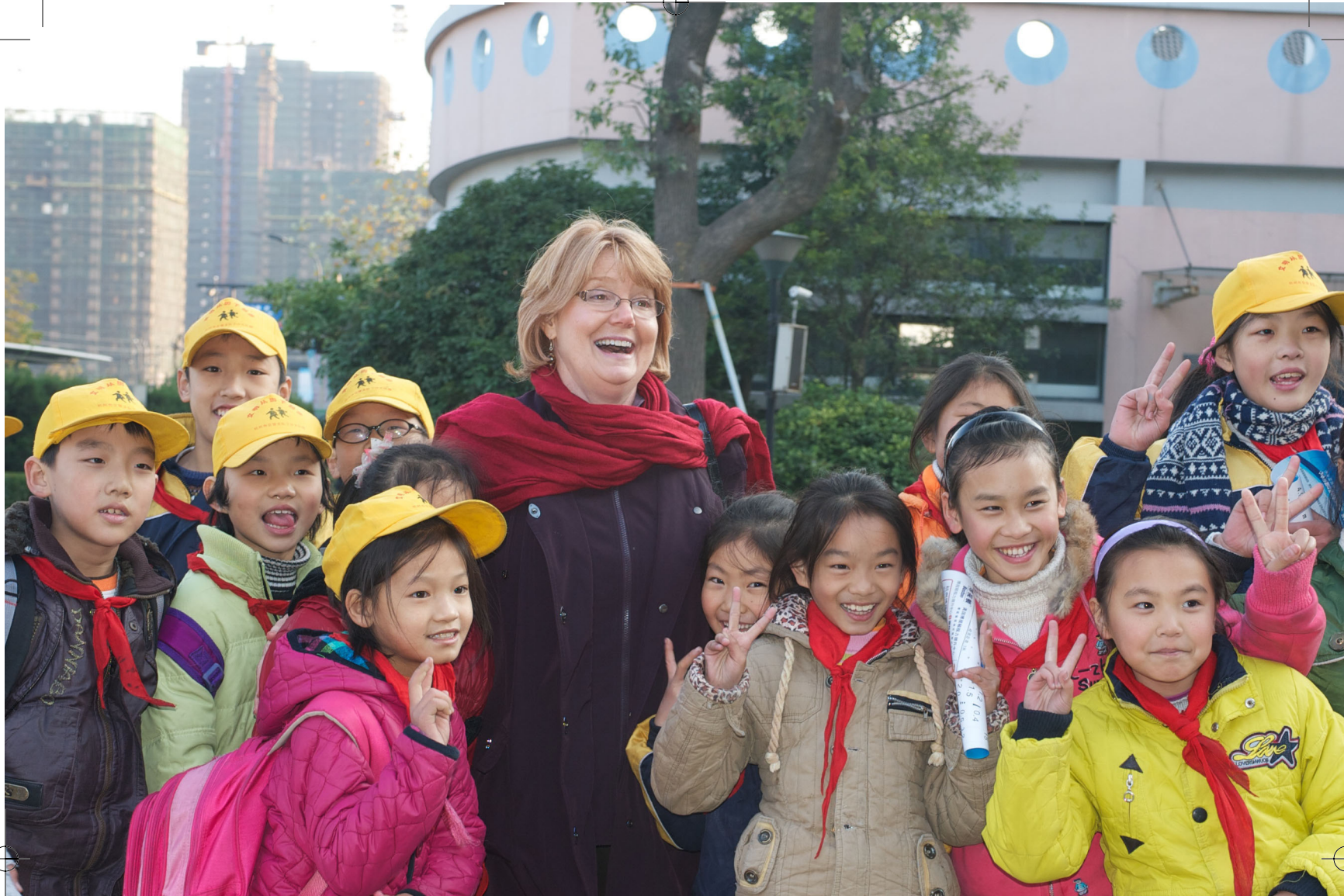
*Students from
University School of
Nashville concentrate
while taking an HSK
test.*





SUMMER CAMPS

Above: 2012 CIMTSU high school summer camp students with a group of Chinese children. Left: Campers pose with chaperone Yifei Zhong (front row, left) in front of the Forbidden City.



VISITS TO CHINA

Above: A visiting teacher from the U.S. poses with kids from Xiasha No. 2 primary school in Hangzhou, China.

Right: MTSU faculty and students performing jazz at Xuejun High School, Hangzhou.





HNU students give a performance at the CIMTSU Grand Opening. More on Page 25.

PART 4: OTHER EVENTS

CIMTSU provided assistance in arranging dignitaries' visits both to China and U.S. This includes MTSU President Sidney McPhee's visit to Hanban in 2013, Director-General of Hanban Madame Xu Lin's visit to MTSU in 2013, HNU president Ye Gaoxiang's visit at MTSU in 2010, HNU Chairman of Board of Trustee Cui Pengfei's visit to MTSU at

CIMTSU Grand Opening in 2010, HNU Chairman of Board of Trustee Cui Pengfei's visit to MTSU at the Centennial Celebration in 2011, former U.S ambassador Jim Sasser visiting CIMTSU. CIMTSU coordinated the publication of MTSU President Sidney A. McPhee's book "China in the Eye of An American University President."



Above: President Sidney A. McPhee (second from left) talks with vice mayor of Hangzhou Xu Xiaoping (first left) and chair of HNU Board of Trustees Cui Pengfei (first right) at the CIMTSU grand opening. Far right: Sen. Bill Ketron (right) chats with Vice Mayor of Hangzhou Xu Xiao-ping (first left) and chair of HNU Cui Pengfei (second left).

China delegation joins CI grand opening

Middle Tennessee State University celebrated the grand opening of the Confucius Institute (CIMTSU) on campus by welcoming a delegation from the People's Republic of China and a performance by traditional Chinese entertainers on April 21, 2010.

MTSU cemented a relationship with Hangzhou Normal University on Dec. 1, 2009, when President Sidney A. McPhee and Hangzhou's president, Dr. Ye Gaoxiang, signed a partnership agreement at the Institute's MTSU office in Peck Hall.

The pact covered the development of Chinese language classes, student and faculty exchanges, cultural exchanges, outreach programs to area K-12 schools, the training of educators to



teach Chinese as a foreign language and research about contemporary China, among other mutual interests.

Among the dignitaries attending were Mr. Cui Pengfei, chairman of Hangzhou Normal's university council; Mr. Chen Xiaoping, Vice Mayor of Hangzhou City; and Dr. You Shaozhong, Minister Counselor for Education Affairs, Embassy of the People's Republic of China in the United States of America.



HNU, MTSU FORGE LASTING RELATIONSHIP

Above: HNU president Ye Gaoxiang (first right, front row) visits MTSU for the 2010 signing ceremony creating CIMTSU. Right: HNU board of trustees chair Cui Pengfei (seated) enjoys a humorous moment with President Sidney A. McPhee at MTSU's Centennial Gala in September 2011.





JIM SASSER VISITS CIMTSU

*Former American
ambassador to China
Jim Sasser (right)
visiting CIMTSU*

I AM *true* **BLUE**™ Learn more at www.mtsu.edu.



A comprehensive university, MTSU offers more than 145 undergraduate programs in its nine colleges.

One such example is the **University Honors College**, which provides students with the atmosphere of a small, select college and the resources and opportunities of a major university.





MTSU President Sidney A. McPhee signs copies of his book, China: Through the Eyes of an American University President, at Hangzhou Normal University in May 2013.



MTSU president's latest book leans on experiences of his visits to China

MTSU President Sidney A. McPhee's most recent book, "China: Through the Eyes of an American University President," was published through the coordinated efforts of Hanban and CIMTSU. The book, widely circulated in China and the U.S., captures his experiences and photographs of his visits to China during the past decade. China's foreign ministry selected the book as a significant cultural presentation during 2013. The book, along with signing events by the President, has attracted crowds in China and U.S. and attention in media in both countries.

True Blue Pride

MTSU *and the* Grammy Awards

Students, alumni, and faculty from **Middle Tennessee State University** are well represented in the honor rolls of **Grammy nominations and winners** throughout the years.

MTSU's tradition of excellence is showcased in programs in our **Department of Recording Industry**, in the **College of Mass Communication**, and our **School of Music** in the **College of Liberal Arts**.

For more information on MTSU's academic offerings in any of our colleges, visit

www.mtsu.edu

**MIDDLE
TENNESSEE**
STATE UNIVERSITY



HILLARY SCOTT OF
LADY ANTEBELLUM



JOHN HILL



CEDRIC DENT



JOSH KEAR



TORRANCE ESMOND



ERIC PASLAY



LUKE LAIRD



DAVE BARNES

PART 5: 2013 DIRECTOR GENERAL'S VISIT



President Sidney A. McPhee and Vice Minister Xu Lin of China tour the primary space at the Confucius Institute at MTSU (CIMTSU).

MTSU deepens China collaboration with visit by Confucius Institute's CEO

Vice Minister Xu Lin tours State Capitol, university facilities

By Jimmy Hart
MTSUNews.com

MURFREESBORO — MTSU President Sidney A. McPhee and Vice Minister Xu Lin of China shared their cultures, ideas and a few gifts during a Sept. 30, 2013 visit by Xu to the State Capitol and to the Confucius Institute on the Middle Tennessee State University campus.

Xu and four associates flew into Nashville following a weekend meeting at Western Kentucky University in Bowling Green, Ky., attended by Confucius Institute leaders from across the United States. Xu oversees the

400-plus Confucius Institutes located in 117 countries around the world.

The delegation finished its trip with a visit to MTSU's Confucius Institute inside Peck Hall, where they were greeted by a group of Chinese students as well as Rutherford County students and parents who have participated in recent cultural exchanges.

During the State Capitol visit, which was facilitated by State Sen. Bill Ketron, R-Murfreesboro, Xu and McPhee met with Gov. Bill Haslam, state Rep. Jim Coley, R-Bartlett, and Ketron to discuss the impor-

>> CONTINUED ON NEXT PAGE

tance of cultural exchanges between the U.S. and China in areas such as education and business.

Haslam said he's visited China in the past, though not as governor, but hopes to do so in the future. He asked Xu what she hopes to accomplish through the institutes. Xu said her goal is to strengthen China's support for Confucius Institutes, which are also present at the University of Memphis and the University of Tennessee-Knoxville.

"Actually my goal is your goal," Xu said. "We want to become a great window for the two countries. ... The Chinese government wants to pay more attention and (give) more support to the Confucius Institute."

Xu, who also serves as director-general of the Office of Chinese Language Council International (Hanban), oversees a worldwide network of institutes that offers Chinese language and teaching resources and services, provides cultural outreach and fosters educational partnerships. The institutes are affiliated with China's Ministry of Education.

In touting the positive impact of the cultural exchange, McPhee cited the exclusive research partnership between the Tennessee Center for Botanical Medicine Research, based at MTSU, and the Guangxi Botanical Garden of Medicinal Plants in China to



University officials greet Vice Minister Xu Lin of China at the Nashville airport as she exits an MTSU airplane.

accelerate the development of Western medicines from plant extracts. McPhee noted that about 15 samples of medicinal plants are showing promise in treating certain cancers.

MTSU opened its Confucius Institute in April 2010 through a partnership with Hangzhou Normal University. The University of Memphis opened the first institute in the state in 2007, while UT-Knoxville's

» CONTINUED ON NEXT PAGE



Vice Minister Xu Lin of China (center) presents a special text to Gov. Bill Haslam (center, right).



Murfreesboro and Rutherford County students from previous and future cultural exchanges to China greeted Vice Minister Xu Lin (center) during her visit to CIMTSU.

opened earlier this year, with each also partnering with a Chinese university.

"It's very competitive to get a Confucius Institute," said McPhee, who serves as a senior adviser to the Hanban/Confucius Institute Headquarters in Beijing. "Our goal is to get even more American students to study in China."

Under McPhee's leadership, MTSU has strengthened its international outreach to China as well as several other countries. Earlier this year, McPhee led a delegation to China, which included a visit to Confucius Institute Headquarters, and facilitated a cultural and educational agreement between the Murfreesboro City Schools, Rutherford County Schools and a China education group.

Xu was given a brief history of Tennessee as she toured the State Capitol and was surprised to learn that President Andrew Jackson, who is a topic of Chinese world history courses, was from Tennessee. She was also impressed with the state's rich music history, including country music.

Tour stops also included the State House and State Senate chambers where Ketron and legislative assistant Ryan Adcock answered Xu's questions about the

"It's very competitive to get a Confucius Institute. Our goal is to get even more American students to study in China."

Sidney A. McPhee, MTSU
President

legislative process and how it compared to the process within the Chinese government.

Before departing Nashville, Xu presented Haslam with a book on Chinese history and culture while Haslam presented her with a leather-bound tablet emblazoned with the state of Tennessee seal and a state lapel pin.

"We're very honored to have you here," Haslam said.

Once in Murfreesboro, McPhee and Xu exchanged gifts at a luncheon at the President's Residence attended by university leaders including Provost Brad Bartel, MTSU Confucius Institute Director Guanping Zheng, Associate Director Paul Cui and Dr. David Schmidt, MTSU vice provost for international affairs.

"Our home is your home," McPhee told Xu and her delegation, referring to Xu as "my very, very good friend" and "my oldest sister."

Ketron, who traveled with the MTSU delegation to China earlier this year, is pleased that the relationship with China continues to broaden.

"We're pleased to have the Confucius Institute at MTSU," he said, "and we'll continue to build these bridges of friendship."

I AM *true* **BLUE**™

MIDDLE TENNESSEE STATE UNIVERSITY

MTSU IS COMMITTED TO DEVELOPING a community devoted to learning, growth, and service. We hold these values dear, and there's a simple phrase that conveys them:

"I am True Blue."

"I am True Blue" and "True Blue" are the expressions of MTSU's brand. It represents a student-centric culture in all aspects of MTSU's operations; the University's standing as an accessible, affordable and quality institution; and its goal to provide the options and opportunities of a major comprehensive university while retaining small-college roots and approaches to student success.

Every new student at MTSU takes the True Blue Pledge at convocation. The pledge commits each new Blue Raider

to practice the core values of honesty and integrity; have respect for diversity; engage in the community; and commit to reason, not violence. For members of the faculty and administration, pledging to be True Blue signals a renewed commitment to the success of students. In short, **True Blue stands for the very best of what Blue Raiders expect from one another.**

MTSU, now more than a century old, offers terrific opportunities, exceptional value and a beautiful campus. No wonder it is the No. 1 choice of undergraduates in Tennessee, as well as the No. 1 choice of our state's transfer students and veterans.

True Blue!

I AM *true* **BLUE**

Find out more at
www.mtsu.edu/trueblue

**MIDDLE
TENNESSEE**
STATE UNIVERSITY®

Logan Kilgore ('12)
Business Administration

MTSU is an AA/EEO employer.

PART 6: 2013 DELEGATION FROM CHINA



Visiting Chinese students are greeted by MTSU cheerleaders.

MTSU hosts reunion of delegations of students from China and the U.S.

Visitors from Hangzhou visit friends from cultural exchange

By Jimmy Hart
MTSUNews.com

As they stepped off the bus July 9, 2013 outside MTSU's Kennon Hall of Fame, many members among the delegation of 30-plus visitors from Hangzhou, China, had their smart phones in hand to capture a slice of American culture.

They were met by plenty of smiles, handshakes and music as band members and cheerleaders from Siegel High School, the Discovery School at Reeves Rogers, Central Magnet School and MTSU performed along a

balloon-lined entrance to the Kennon Sports Hall of Fame building.

Once inside, MTSU President Sidney A. McPhee officially welcomed the delegation of Chinese elementary and middle school children and educators to campus. They visited to develop student exchanges and cultural ties with Tennessee schools.

With translation assistance from Dr. Guanping Zheng, director of the MTSU Confucius Institute, McPhee noted that the visit "is the continuation of a partnership that began several years ago" when a former president of Hangzhou Normal University visited

» CONTINUED ON NEXT PAGE



Above: First Lady Elizabeth McPhee leads Chinese students in an impromptu parade at the President's Residence. Right: An exchange student at recent meal at the President's Residence.

schools in Murfreesboro and East Tennessee to discuss collaboration between rural and urban schools in China and the United States.

The goal was to “exchange best practices in teaching and learning, to look at the resources and leverage the expertise of both the United States, particularly Tennessee, and China, and it has resulted in a wonderful partnership between Dongcheng Education Group, MTSU’s Confucius Institute and the schools in this area,” McPhee added.

The Chinese students were throughout the four-day visit with Rutherford students who visited Hangzhou in July 2012. That visit was facilitated by the Confucius Institute, which works to develop cultural and educational ties between China and the United States.

Principal Liu Jinbin of the Dongcheng Education Group of Hangzhou Normal University expressed appreciation for the hospitality. That included some light-hearted ice-breaking activities such as teaching



the Chinese students the Cupid Shuffle and a game of musical chairs.

“I see many familiar faces of those of you who visited China last year,” Liu said. “Our visit is to further our collaboration and partnership with Middle Tennessee State University and the school systems in Middle

» CONTINUED ON NEXT PAGE



Chinese students visited MTSU's farm to learn about the horse science program.

Tennessee. It will help us get a better understanding of the schools and education system.

"It's my first time visiting the U.S., but I already feel like I have a lot of friends."

Sally Smith, a seventh-grader at Central Magnet School, joined Central eighth-grader Eshan Patel in sharing historical and cultural facts about the local community with the Chinese delegation.

Chinese students visited the homes of local children, tour historic and cultural sites in Nashville and Murfreesboro and participate in educational workshops. Stops include the State Capitol Building, the Grand Ole Opry, the Stones River National Battlefield and Cannonsburgh Village.

"It will truly be hard to live up to our visits to your homes," Patel said.

Elizabeth McPhee, MTSU's first lady and a retired teacher from the Discovery School at Reeves Rogers, was part of a committee of teachers, parents and administrators that organized the cultural exchange effort.

"The No. 1 thing we're trying to accomplish is a

»» CONTINUED ON NEXT PAGE



Dance demonstrations were part of the program for CIMTSU's guests.



Chinese and local students were guests of the Grand Ole Opry during the Chinese delegation's visit.



A delegation visitor celebrates with MTSU President Sidney A. McPhee during a picnic game.

merging of the cultures, getting our kids to learn from the Chinese and getting the Chinese to learn from us," said Mrs. McPhee.

"It's not just textbooks. Our students have had the opportunity to go to China, and not just go as a tourist, but to go and actually be in the homes of the families, and now we're doing the same thing (for the Chinese delegation). They're going to come and be in our homes, they're going to go to some of our schools ... and they're going to see some of our best practices."

Area and Chinese educators participated in round-table discussions about educational and leadership styles

Officials from Murfreesboro City Schools, Rutherford County Schools, MTSU and the Dongcheng Education Group of Hangzhou Normal University also signed agreements to formalize future cooperation, including:

- Promoting institutional exchanges by inviting faculty and staff to participate in teaching and research activities and in professional development;

- Developing exchange programs, such as summer camps, in both China and Rutherford County; and

- Organizing symposia, conferences, short courses or programs, and meetings on educational issues or other topics of mutual interest.

PART 7: 2013 DELEGATION TO CHINA



President Sidney A. McPhee (right) exchanged welcome gifts with Huang Zhen, vice president for teaching and international affairs for Shanghai Jiao Tong University, after the signing of an agreement that established formal ties between the two academic institutions.

STOP 1: SHANGHAI

MTSU signs exchange agreement with school crowned 'China's MIT'

Pact with Shanghai university also encourages faculty collaboration

By Andrew Oppmann
MTSUNews.com

SHANGHAI, China — Middle Tennessee State University established formal ties with a university that has been crowned "China's MIT" for its strong science, engineering and bio-medical programs.

The agreement between MTSU and Shanghai Jiao Tong University will allow for the exchange of faculty and students between the institutions. It will also let professors collaborate and share research.

President Sidney A. McPhee, who led an MTSU del-

egation that included state Senate Majority Caucus Chairman Bill Ketron, R-Murfreesboro, signed the agreement during ceremonies on the Shanghai campus.

"Shanghai Jiao Tong University is a premier university, recognized internationally for excellence across its 29 schools and 11 institutes," McPhee said. "Our partnership will allow students and faculty to study, explore and collaborate on projects that benefit both institutions and our respective communities."

The agreement was forged at one of the first stops of

»» CONTINUED ON NEXT PAGE

a seven-city tour by the MTSU delegation to create or strengthen relationships with Chinese universities.

"Today we opened the door to the future for our two universities to forge significant research relationships," said Ketron, a 1976 graduate of MTSU who represents the 13th District in the state Senate.

Founded in 1896, Shanghai Jiao Tong University offers a wide range of academic programs, with sciences as its foundation. Three of its disciplines — Naval Architecture and Ocean Engineering, Mechanical Engineering and Clinical Medicine — are ranked No. 1 in China.

Faculty, students and alumni of Shanghai Jiao Tong have created many "firsts" in modern and contemporary Chinese and world history. The university's list of firsts includes China's first internal combustion engine, the first hovercraft and the first operation that rejoined a severed limb.

The agreement joins the School of Life Sciences and Biotechnology at Shanghai Jiao Tong with the Tennessee Center for Botanical Medicine Research, headed by Director Elliot Altman, who is also a biology professor at MTSU.

"This agreement is a starting point," Altman said. "Universities in China like to start relationships with U.S. universities that encourage the exchange of stu-

dents and collaborations between professors. There are definite possibilities here for both of our institutions."

Xuehong Zhang, executive dean of the School of Life Sciences and Biotechnology, signed the agreement on behalf of Shanghai Jiao Tong University. Deputy Dean Zhang Dabing, who is director of the National Center for Molecular Characterization of Genetically Modified Organisms, also represented the school.

Yan Feng, director of the Department of Biosciences and Biotechnology, and Professor Dawei Li of the School of Pharmacy also attended on behalf of the Shanghai university.

After the signing ceremony, McPhee and the MTSU delegation also conferred with Huang Zhen, vice president for teaching and international affairs for the Shanghai university, about specifics on the student exchange aspects of the agreement.

Zhen said one third of his university's undergraduate students participate in study abroad programs, a point of pride for the institution.

McPhee also delivered a lecture to about 100 Shanghai students on how to become a successful international student at an American university, using MTSU as a role model and starting point for his discussions.



President Sidney A. McPhee (left) and Xuehong Zhang, executive dean of the School of Life Sciences and Biotechnology at Shanghai Jiao Tong University, signed an agreement that established formal ties between the two academic institutions.

PART 7: 2013 DELEGATION TO CHINA



President Sidney A. McPhee listens to a comment during his lecture to more than 300 students at China's Hangzhou Normal University. Also on hand was HNU president Ye Gaoxiang, who can be seen seated on the front row near McPhee.

STOP 2: HANGZHOU

MTSU, Hangzhou universities agree to expand, strengthen partnership

President McPhee lectures, signs his book at HNU

By Andrew Oppmann
MTSUNews.com

HANGZHOU, China — The presidents of Middle Tennessee State University and Hangzhou Normal University have agreed in principle to a three-point expansion of the strong relationship enjoyed by the two institutions.

During a two-day visit to the Hangzhou campus, MTSU President Sidney A. McPhee and HNU President Ye Gaoxiang outlined ideas to further expand faculty and student exchanges and joint research projects.

"We deeply value our partnership with HNU, and we will gladly accept these ideas from President Ye on ways to expand it further," McPhee said.

More than 300 HNU students later attended a lecture by McPhee, where Ye asked him to relate his experiences in China and provide advice for those wishing to study abroad.

The Hangzhou visit was the second stop in a seven-city tour by a MTSU delegation led by McPhee to establish or extend partnerships with Chinese universities and review collaborative research efforts.

» CONTINUED ON NEXT PAGE



President Sidney A. McPhee and members of the University's delegation meet with Hangzhou Normal University president Ye Gaoxiang and top HNU officials.

The group also includes state Senate Majority Caucus Chairman Bill Ketron, R-Murfreesboro, a 1976 graduate of MTSU who now represents the 13th District in the state Senate.

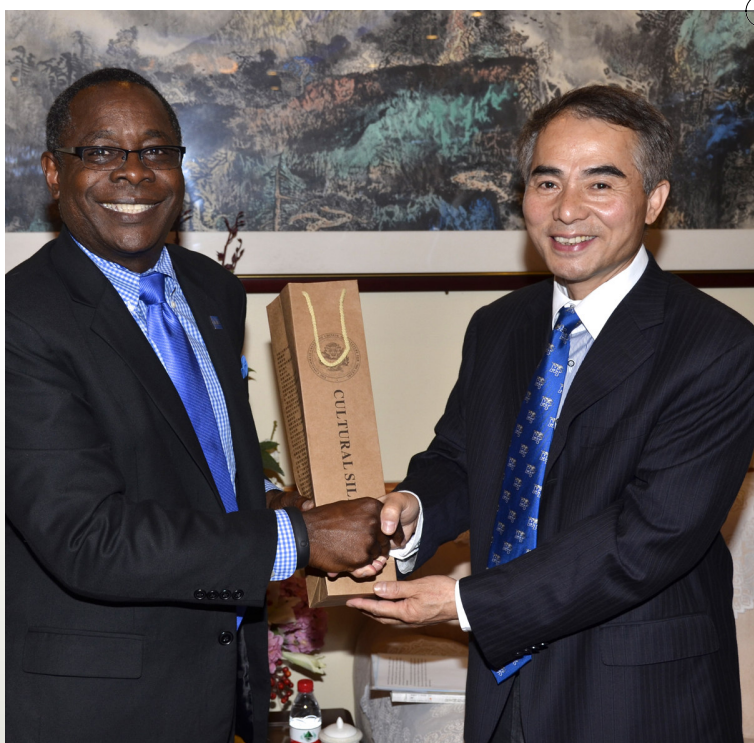
MTSU and Hangzhou partnered in 2009 to open MTSU's Confucius Institute, which works to enhance understanding of Chinese language and culture in Tennessee and create opportunities for collaboration between the two universities.

Ye asked McPhee to allow MTSU faculty to participate in a special HNU project that brings scholars each year to Hangzhou to teach classes from May to August. HNU would also like to send selected faculty members to teach at MTSU, Ye said.

Ye also invited MTSU students to participate in the China-U.S. People to People Exchange Program. Students in the government-funded program would get a full scholarship to HNU and earn credits accepted at both universities. HNU now offers more than 50 courses in English on Chinese philosophy, history and culture.

The Hangzhou Normal president asked McPhee if the two universities could collaborate on operating honors colleges, research in new energy, music education and teacher training.

The presidents agreed to have academic leaders at both institutions work through the Confucius Institute at MTSU to put Ye's ideas into motion.



President Sidney A. McPhee and Ye Gaoxiang renew their friendship during the delegation's visit to China.

PART 7: 2013 DELEGATION TO CHINA



President Sidney A. McPhee, (front right), and Sen. Bill Ketron, R-Murfreesboro, conclude negotiations with Xu Xuyan, deputy director of the Education Bureau of Shunde District (second from left), and his delegation for a pact that allowed MTSU to forge a relationship with China's leading design center for household technology.

STOP 3: FOSHAN CITY

MTSU forges formal ties with Chinese industrial design institute

First U.S. university to set relations with Shunde innovation center

By Andrew Oppmann
MTSUNews.com

FOSHAN CITY, China — Middle Tennessee State University signed a pact to become the first American university to establish formal ties with an institute in China's leading design center for household appliances and technology.

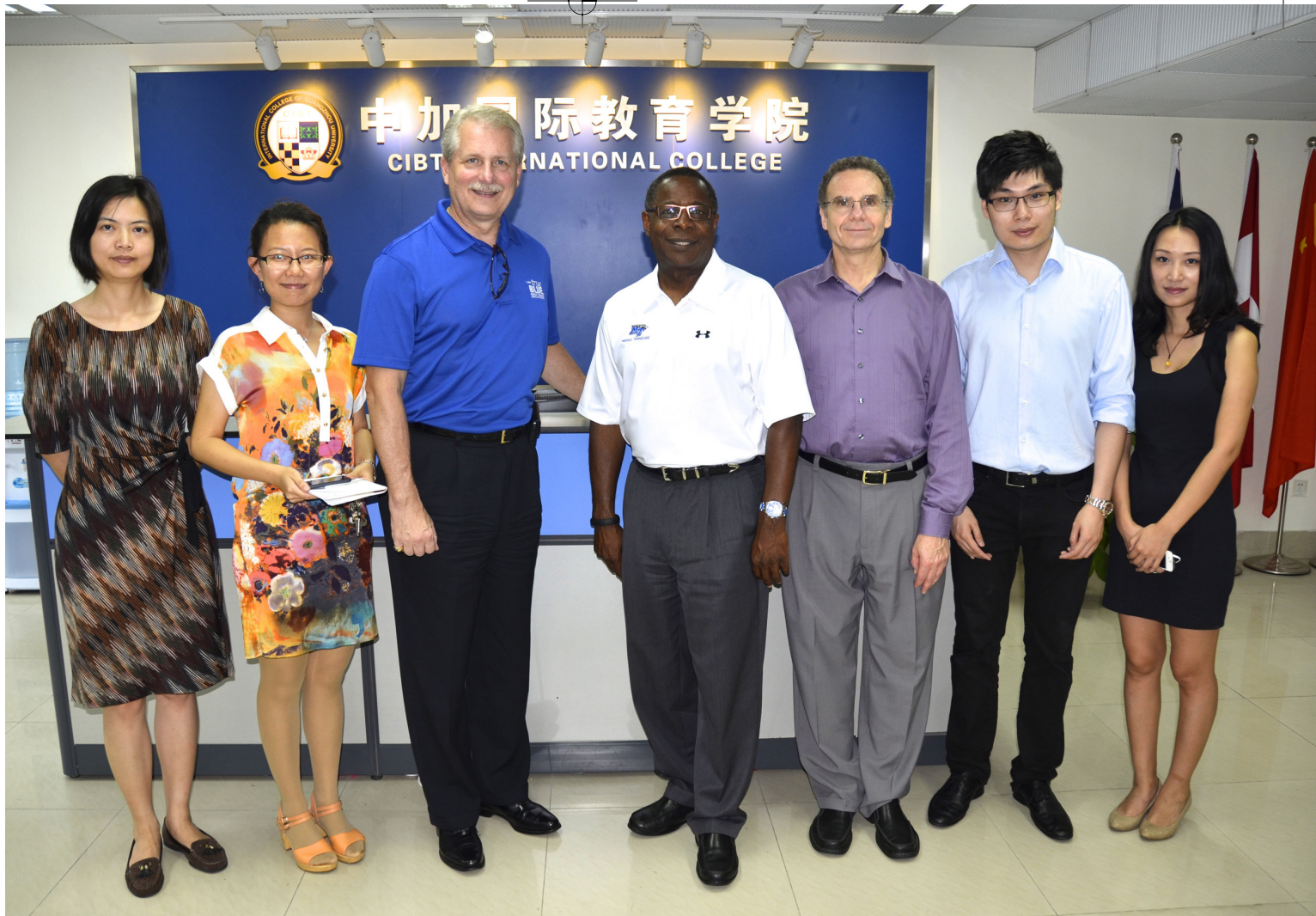
The agreement with the Research Institute of Industrial Design was secured during a two-day visit by a MTSU delegation to the Shunde District in China's Guangdong Province.

The pact signed by MTSU President Sidney A.

McPhee and Xu Xuyan, deputy director of the Education Bureau of Shunde District, allows the university to develop an exchange program for students to work with the institute. It also allows joint research, giving MTSU a potential outlet to participate in Shunde-based projects.

Shunde, once a traditional agricultural county, has been transformed into a modern industrial complex. Dubbed the "Capital of Home Appliances of the World," it is a leader in the production of electric fans, cookers, microwave ovens and other household appli-

»» CONTINUED ON NEXT PAGE



President Sidney A. McPhee and the University's delegation met with officials with CIBT International College at Guangzhou University, where MTSU hopes to establish formal ties in the near future.

ances. It is also one of the world's largest producers of furniture.

"We will look at our resources and expertise at MTSU, then identify the areas where we can help you," McPhee told Xu. "We would like to partner with the Industrial Design City, with our students having a experience similar to internships.

"Our students can relate to you what our market wants and needs and how to capture consumer attention," he said. "And you can help them understand the market forces outside of the United States."

The agreement was forged at one of the stops of a seven-city tour by the MTSU delegation to create or strengthen relationships with Chinese institutions. McPhee and state Senate Majority Caucus Chairman Bill Ketron, R-Murfreesboro, a 1976 graduate of MTSU, are leading the delegation.

The agreement was reached after a round of final negotiations at the office of Totin Worldwide Commercial Co. in the Guangdong Base of Industrial Design.

Ketron said the relationship could help innovations

developed by MTSU faculty and students reach a global audience.

"In Tennessee, we often miss the link between having the idea and getting to market," he said. "We must get good ideas to market faster and start putting things on the shelf for sale. That's how we generate money for our economy."

Xu described the deal as "very important for our area."

"Your students can do projects and bring ideas to our industries," he said. "I think it's a win-win choice."

McPhee and the delegation toured innovations on display at the offices of Totin and an exhibition at the Base of Industrial Design – including a prototype apartment for the elderly with specially geared kitchen, bathroom and living room appliances.

The delegation's trip to Guangdong Province also included meetings with officials of the CIBT International College at Guangzhou University, where MTSU hopes to establish formal ties later in the near future. McPhee also lectured to Guangzhou students about study-abroad opportunities at MTSU.

PART 7: 2013 DELEGATION TO CHINA



A small section of the Guangxi Botanical Garden of Medicinal Plants in Nanning, China. The garden contains more than 7,400 medicinal plants.

STOP 5: GARDEN

MTSU's botanical research partnership in China moves forward

Joint research center dedicated at top medicinal herb garden

By Andrew Oppmann
MTSUNews.com

NANNING, China — Middle Tennessee State University's partnership in China studying modern uses of ancient herbal remedies has yielded almost 40 results showing promise in the treatment of cancer, viral infections and other ailments.

The report came as an MTSU delegation concluded its visit to the Guangxi Botanical Garden of Medicinal Plants, named in 2011 as the world's largest medicinal herb garden by the Guinness Book of World Records.

Located in Nanning in southern China, the garden features more than 7,400 medicinal plants.

MTSU President Sidney A. McPhee and Miao Jianhua, vice president of the Guangxi Academic Science Institute and garden director, celebrated the partnership's progress with the christening of an MTSU-branded Joint Research Center at the garden's new research laboratory and headquarters.

"I am committed to making sure we produce ground-breaking research that will help the people of China, help the people of America and, perhaps, the

» CONTINUED ON NEXT PAGE



President Sidney A. McPhee at the Guangxi Botanical Garden of Medicinal Plants.

people of the world," McPhee said in remarks before the dedication.

The Tennessee Center for Botanical Medicine Research, based at MTSU, and the Guangxi garden are partners in an exclusive collaborative agreement that seeks to accelerate the development of Western medicines from plant extracts.

The partnership, which began in 2011, plays to the strengths of both institutions. Garden researchers cultivate and prepare extracts. Then, MTSU scientists, led by professor Elliot Altman, screen the samples to determine their promise in the treatment of ailments.

McPhee, who said he was impressed with Miao's leadership in the project, also suggested that garden researchers assist the university in growing some botanical samples at MTSU's 500-acre agriculture complex at Guy James Farm.

"I think it has great potential, because our agricultural program is one of the best in the Southeast and we have a lot of good farmland," McPhee said.

The application of traditional Chinese medicine for

» CONTINUED ON NEXT PAGE



The sign outside the laboratory at the Guangxi Botanical Garden of Medicinal Plants that marks the Joint Research Center with MTSU.



Miao Jianhua (left), vice president of the Guangxi Academic Science Institute and director of its botanical garden, with MTSU president Sidney A. McPhee after unveiling a sign outside the Joint Research Center. Also pictured: State senator Bill Ketron, R-Murfreesboro (center), MTSU professor Elliot Altman, and MTSU assistant professor Ying Gao.

the treatment of a variety of diseases is an ancient and respected tradition widely accepted in the Far East and gaining in awareness within Western cultures.

About 800 plants at the garden have been shown to have potential in treating a variety of diseases. Researchers at the garden have been preparing extracts from these plants. This has yielded a library of up to 400,000 compounds that MTSU researchers can explore.

Ying Gao, an MTSU assistant professor who accompanied Altman as a member of the China delegation, said the university would like to increase that library even further. She asked for Miao to provide more extracts for study.

Miao agreed, saying that MTSU “has what we need” to move the project forward. The director said he would personally oversee the next phases of the part-

nership.

After unveiling the Joint Research Center’s sign outside the Guangxi laboratory, the delegation also toured the garden, as well as a nearby pharmaceutical industry park that is poised to produce products developed by the partnership.

MTSU’s delegation was headed by McPhee and includes state Senate Majority Caucus Chairman Bill Ketron, R-Murfreesboro, a 1976 graduate of the university.

Ketron joined McPhee in signaling support for the partnership, saying that he felt the collaboration “held great promise for advancements in science and medicine.” McPhee and Ketron also told their Chinese hosts about MTSU’s new \$147 million Science Building, set to open in 2015, which will aid in the collaboration.

PART 7: 2013 DELEGATION TO CHINA



President Sidney A. McPhee presents an “I Am True Blue” shirt to President Lin Jianhua of Chongqing University of Posts and Telecommunications.

STOP 6: CHONGQING & BEIJING

Visits to Chongqing and Beijing concludes MTSU’s tour of China

Delegation concludes with visit to Hanban headquarters

By Andrew Oppmann
MTSUNews.com

BEIJING, China — Middle Tennessee State University concluded its 2013 delegation’s visit to China after meetings at universities in Beijing and Chongqing and the main offices of the Confucius Institute.

The stops at Chongqing University of Posts and Telecommunications; Communication University of China in Beijing; and Hanban Confucius Institute’s global headquarters in Beijing wrapped up the delegation’s seven-city agenda.

“We have been buoyed by the support and awareness of MTSU from our colleagues and friends in China,” said MTSU President Sidney A. McPhee. “As a result, we forged many meaningful agreements and connections that will benefit our university.”

In Chongqing, McPhee met with CUPT President Lin Jianhua to discuss future exchanges between the two institutions. CUPT is one of the country’s top universities for information science and technology.

Lin designated a representative to attend MTSU this fall to pursue a graduate degree and begin planning a

»» CONTINUED ON NEXT PAGE



President Sidney A. McPhee lectures to students at the Chongqing University of Posts and Telecommunications.

future visit to Murfreesboro by officials from Chongqing. McPhee also lectured to students about the advantages of international studies and talked about opportunities for graduate-level learning at MTSU.

In Beijing, state Sen. Bill Ketron, R-Murfreesboro, led the delegation to meet with Wang Yongli, deputy-director general of Hanban. Wang helps oversee a network of more than 350 Confucius Institutes in more than 100 countries.

Ketron, a 1976 graduate of MTSU, expressed strong support for the institute's work on the Murfreesboro campus in promoting Chinese language learning in Tennessee.

Ketron and the delegation's visit to the Communication University of China included a lunch with faculty and administrators and a review of ongoing student and faculty exchanges. CUC is ranked as the country's No. 1 media education university and has

been called "the cradle of China's broadcasting and television talents."

Joining the session at CUC was Zeny Sarabia-Panol, associate dean of MTSU's College of Mass Communication, who is teaching at the Beijing campus this summer.

MTSU has an international enrollment of more than 700 full-time, degree-seeking students, a 16.5 percent increase over last year and a jump of almost 30 percent from 2011.

The university has targeted higher international enrollment as a way to diversify the MTSU campus and generate additional revenue.

The MTSU delegation also renewed or established relationships with Shanghai Jiao Tong University; Hangzhou Normal University; the Research Institute of Industrial Design of Shunde; Guangxi University; and the Guangxi Botanical Garden of Medicinal Plants. It also visited government officials in Guilin.



State Sen. Bill Ketron (second from left), MTSU vice president Andrew Oppmann (second from right) and Guanping Zheng, director of MTSU's Confucius Institute, are greeted by an official at the worldwide headquarters of Hanban Confucius Institute in Beijing.

MIDDLE TENNESSEE

STATE UNIVERSITY

