

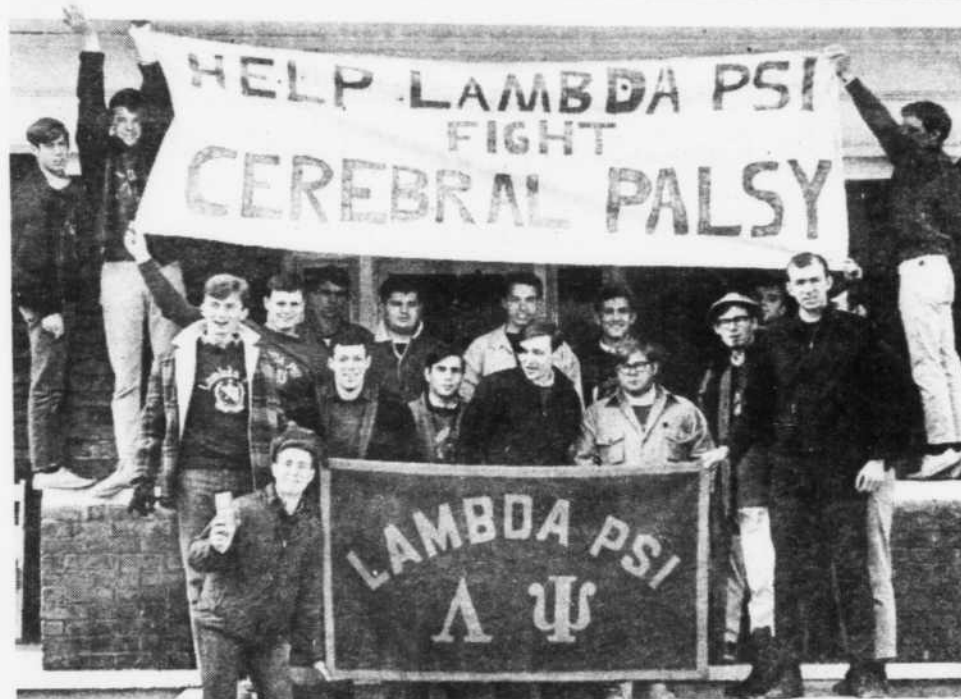
WHAT IS FRATERNITY...



Brotherhood



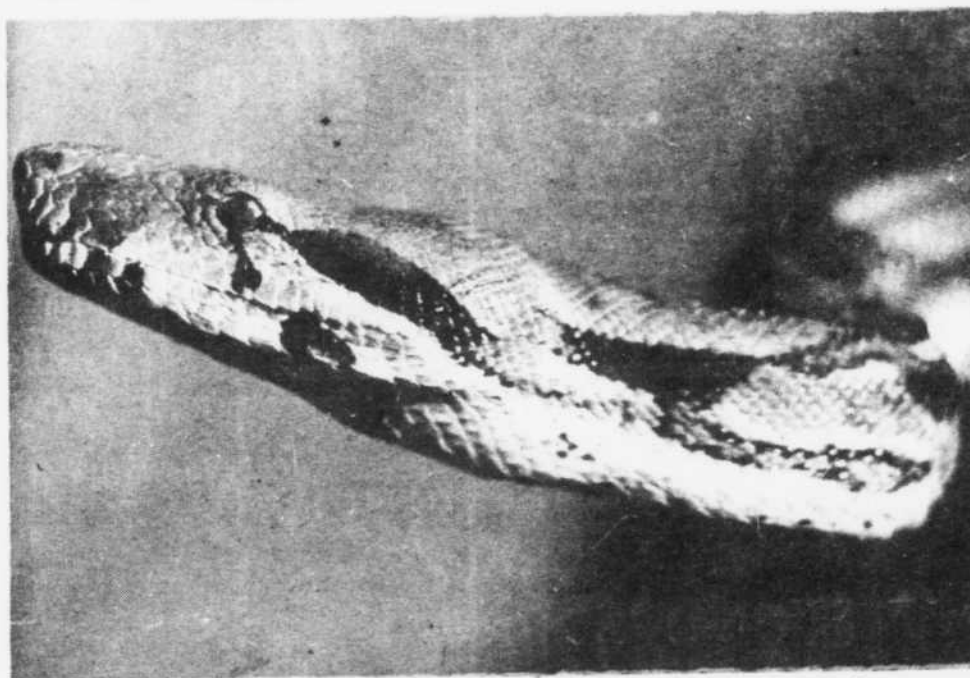
School Spirit



Civic Pride



Social



Tradition

Nationalization Brings Change

By Michael Goforth

The past year has brought great change to the MTSU Greek system since its beginning eight years ago.

Last March marked a great moment in the Greek history on this campus with the coming of the first national colony. Sigma Tau Omega became the Sigma Colony of Kappa Sigma, and since that time all of the local fraternities here have become affiliated with a national fraternity.

The coming of Dr. M.G. Scarlett as the new president of MTSU helped propel the Greek system to the position it has today, as in his first address to the student body he hinted that the door might be opened for the coming of national chapters here.

Scarlett's hint came true as last November he announced that the three year probation term for fraternities and sororities had been terminated.

The Kappa Alpha Colony was the first to take advantage of the new ruling. On Feb. 15 Phi Epsilon became the Delta Lambda Chapter of Kappa Alpha Order.

Next week Kappa Sigma will become the second national chapter here as the Sigma Colony will become the Kappa Iota Chapter of Kappa Sigma.

The Sigma Nu Colony, Lambda Psi, petitioning Sigma Alpha Epsilon, and Chi Alpha Pi, affiliated with Sigma Chi, are expected to receive national charters within the next year or two.

The Fraternity system at MTSU began in the fall of 1961 when Phi Epsilon was formed as an off-campus fraternity.

Phi Epsilon was the only social fraternity at MTSU until the spring of 1966 when Sigma Tau Omega was established.

In the Fall of 1966 social fraternities were recognized as campus organizations as a result of a committee set up by Dr. Quill Cope, former MTSU president, to study the social fraternities here.

Three new fraternities were formed in the Fall of 1966. These were Sigma Delta Zeta, Lambda Psi and Chi Alpha Pi.

The Inter-Fraternity Council was created to coordinate and govern the five fraternities and to develop a strong Greek system here.

This past December the IFC sponsored a trip to the National Interfraternity Conference in Miami Beach. The purpose of the trip was to become more knowledgeable of the nationals and to identify more closely with them and to develop an IFC ready to deal with a national fraternity system here.

The new IFC will face its first test with this spring's rush which starts today at 11:00 in the DA auditorium with rush orientation.

Dr. Wagner Discusses Greeks, IFC

By Pete Toggerson

Dr. Harry Wagner, former dean of men and now assistant to the president, voiced enthusiasm and praise toward the new IFC and the Greek system as a whole.

Concerning the Inter-Fraternity Council Wagner said, "There is more concern with a Greek system than with petty rivalries. Last December representatives of MTSU Greeks attended the national convention of Inter-Fraternity Councils in Miami. Since then there has been a total reconstruction of the IFC here. A new constitution is nearly completed that puts emphasis on the development of a Greek system."

Wagner is enthusiastic about the national affiliation of MTSU fraternities and what this means to the university.

"A fraternity system can be a university's greatest asset," said Wagner.

Concerning the contributions made by fraternities on the MTSU campus, Wagner said, "During my seven years on this campus the fraternity system has contributed perhaps as much to a university spirit as any other single element among the student groups."

"Fraternities have helped in the transition from a 'suitcase college' atmosphere to that of a seven day university," said Wagner.

While Wagner is obviously very excited about the frat-

Greeks Hold Rush Today

Fraternity rush orientation will be held Thursday, Feb. 27 at 11 a.m. in the Dramatic Arts Auditorium.


The program will consist of a speaker from each fraternity introducing their respective fraternity to the rushees. Harry Wagner, administrative assistant to MTSU president M.G. Scarlett, will be a guest speaker on the agenda.

An introduction to the Greek system will be given by David Maskewitz, Inter-Fraternity Council president, and a rush booklet will be distributed to all rushees. Mike Huff, IFC vice-president, will explain the booklet and all rush rules.

Monday, Tuesday, and Wednesday of next week have been set aside for fraternity smokers which will be held from 6-8 p.m. and 8-10 p.m. Monday and Tuesday and 8-10 p.m. Wednesday. Friday, March 7, will be used by the fraternities for rush parties. Pledge bids will go out Monday, March 10, at 8 a.m. and will be returned that afternoon from 3-5 p.m. at the fraternity houses.

ernity system, he is quick to point out that the administration does not give special treatment to fraternities, but attempts to treat all campus organizations equally.

Wagner urges all interested persons to go through rush, as it will be well worth the effort. Spring rush begins today with "Meet the Greeks" in the DA Auditorium at 11:00 a.m.



Hours:
9 A.M. to 6 P.M.


COEDS

CLASSIC
MONOGRAM
PINS,

HANDCUT
ESPECIALLY FOR YOU!


Regularly \$13.50, but for MTSU girls
ONLY \$10.00... thru Mar. 1. Don't miss
out... place your order today!

All winter clothes 1/2 price
Spring clothes galore!



The Cotton Patch

JACKSON HEIGHTS PLAZA
MURFREESBORO, TENNESSEE 37130



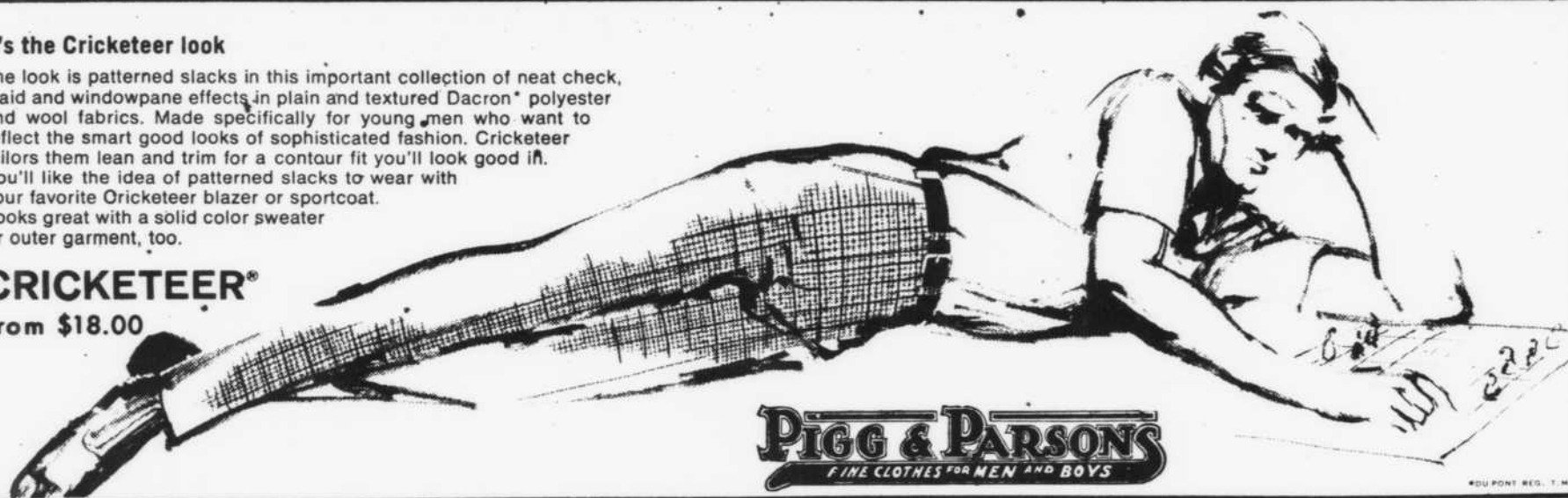
THE MTSU BOOKSTORE WISHES THE BEST TO ALL PLEDGES AND FRATERNITIES...

*We are continually trying to promote better
student - bookstore relationships with fraternity
members as well as all MTSU students.*

It's the Cricketeer look

The look is patterned slacks in this important collection of neat check, plaid and windowpane effects in plain and textured Dacron® polyester and wool fabrics. Made specifically for young men who want to reflect the smart good looks of sophisticated fashion. Cricketeer tailors them lean and trim for a contour fit you'll look good in. You'll like the idea of patterned slacks to wear with your favorite Cricketeer blazer or sportcoat. Looks great with a solid color sweater or outer garment, too.

CRICKETEER®
from \$18.00



Pigg & Parsons
FINE CLOTHES FOR MEN AND BOYS

KA Goes National First

On Nov. 11, 1961, 13 young men met to discuss a way to keep students at MTSU on the weekends. Their solution to this problem was to establish a Greek system at MTSU.

They were confronted with many difficulties in establishing a fraternity, but in the end, the first local fraternity at MTSU was established.

Being first does not always prove to be the best, but Phi Epsilon, as a local has proven its worth in its many accomplishments in the past. It has compiled an excellent record in all that it has attempted.

As time progressed, the brothers of Phi Epsilon found the attainment of their ultimate goal -- affiliation with a national fraternity. In the spring of 1968, Phi Epsilon petitioned to Kappa Alpha Order and the chapters of Kappa Alpha Order passed Phi Epsilon by unanimous vote. Feb. 15, 1968, was the date that the first national fraternity was chartered on the MTSU campus.

Kappa Alpha has achieved a very high status in the community and at the university. It has won awards from both of these areas. From the community, Kappa Alpha has collected awards from the Civitan Club, Heart Fund, Chamber of Commerce, Grantland Rice Bowl, Rutherford County Medical Association, and the American Red Cross. At the university, Kappa Alpha has won the Tau Omicron All-Sing, The Grantland Rice Bowl trophy, Intramural Swimming trophy, and has been the only fraternity to place in Homecoming Float competition. Kappa Alpha won

third place in 1967 and was the first place winner in the float competition this past fall.

Trophies and awards are only a small part of this chapter's activities. The Delta Lambda Chapter of Kappa Alpha Order has many more attributes to offer rushees and future pledges. Kappa Alpha offers every conceivable unit of university life. We are consisted of a brotherhood of individuals who maintain the high ideals and philosophies of Kappa Alpha.

The Kappa Alpha's are known to partake in social activities. Among Kappa Alpha's social activities, there are certain annual festivities. These include the Happy Hippie Party, "That was the Year Party,"

Christmas and New Years parties, Share Croppers party, and the all great Kappa Alpha Idea of March party. The Grand Ball of any at MTSU is the Kappa Alpha's Old South Ball. There is not another affair to compare with this.

COMING!



FRI.
FEB. 28
SAT.
SUN.
MARCH
1-2



KA MEMBERS and dates pose at Share Croppers Party.

Kappa Alpha Is an Order

Stress has been laid upon this fact. Kappa Alpha Order is religious in feeling, rooted in the Christian faith; and military in organization. There is no Kappa Alpha fraternity, only Kappa Alpha Order. A fraternity is a group of persons who are associated together for some common purpose; whereas an Order is a society of persons united together by possession of mutual distinction, a society of college men who possess the qualities of the gentleman exemplified in the life and character of Robert Edward Lee.

Kappa Alpha Order is military in organization, religious in feeling and pledged to chivalrous ideals. These ideals add grace to life and inculcate valor, loyalty, truthfulness, reverence

for womankind, courtesy, modesty and thoughtful regard for the feelings of others.

The philosophy of Kappa Alpha Order is that the acquisition of knowledge and the development of character are the great goals of life.

Kappa Alpha Order is not just another college fraternity, it is a way of life, a philosophy of living. Its influence and its ideals can neither be weighed nor measured, but there is nothing more substantial to its brothers than the bonds of the order they have shared.

Kappa Alpha Order is an organization dedicated to the upholding of the Southern ideals of Chivalry and personal honor. It was conceived with these precepts in the fall of 1865, and has maintained them for over a century.

Now! Have A Roy Rogers Special Ranch Hand Platter

Roast Beef. Sandwich
French Fries
Cole Slaw

99¢



**ROAST BEEF
SANDWICH**

**Roy
Rogers**

**Roast Beef
Sandwich
Restaurants**

129 S. E. BROAD

896-0290



REV. BOB HARRINGTON
"Chaplain of Bourbon Street"

LECTURE SERIES

March 3rd, 4th, & 5th.
Mon., Tues., and Wed.

7:30 P.M.
Dramatic Arts Bldg.

FREE ADMISSION

Sidelines

Since 1912

Box 42 Ext. 475 Office 100 SUB

KEEL HUNT
Editor-in-Chief

JACKIE CROWNOVER
Business Manager

The editorial opinions reflect the editorial policy of the SIDELINES as determined by the members of the editorial board. Editorial views do not necessarily reflect the official opinion or position of Middle Tennessee State University or of its students, faculty, or administration. The views exhibited through the columns on the editorial pages do not necessarily reflect only that of the author.

Sickness Lies In A White Greek System

It is sad that racism is still with us. But it is, even here. There are no Negroes in MTSU fraternities.

The fraternity is a good system. It is a part of the American university tradition. But only if the system changes adequately with the times, can it justify a place in the America of our time.

Racism, as slavery, is also an American tradition. The perverted social ingredient that is race prejudice corrupts, then destroys every institution that breeds it.

Students from the west coast, and even those who attend northern schools, have told this newspaper that the popularity of fraternities—and the social demand for freshmen to join them—has all but vanished on those distant campuses. A student from San Francisco State College has said that now only the "legacies," the sons of old fraternity men, voice interest in Greek institutions there. The reason, he said, is the old racial barriers that fraternities defend with a passion.

It is highly unlikely that the situation will be altered here at MTSU—at least no time soon. The nationals are coming. And the nationals don't like black people.

The old Sigma Delta Zeta, for example, inducted a Negro student several years ago, Richard Butler, the only black Greek in MTSU history, is lucky he graduated, it seems, because Sigma Nu's constitution states a chapter may not pledge either a Negro or an oriental. If Mr. Butler had remained in school when SDZ became a national colony, things could have been very interesting this year.

Black students are bringing law suits against many non-integrated fraternities across the country. It could happen here.

Fraternities and racism began in an era that is no more. Now, when so many American institutions are being modified to exist in a new age, it is truly regrettable that the fraternities must participate in a basically evil ritual.

Perhaps they're only marching to the beat of a different drum, and they can't see the change that has ended an old way of doing things.

Eventually, the revolution will come, even to this conservative South.



MEET THE GREEKS

EPISTLE TO THE GREEKS

By MICHAEL GOFORTH
Rush Edition Editor

In the past few months the Inter-fraternity Council has experienced a great revelation in preparation for the coming of a national Greek system to this campus.

The new IFC's first major test begins today with the Spring rush. The five fraternities must cooperate to eliminate the term "dirty rush" on this campus and conduct a rush that will be looked upon favorably by the eyes of the national fraternities' leaders.

Open violations of ineffective rush rules have occurred in the past, and the rushees, fraternity members, school officials and outside observers are aware of them.

Already rumors of "dirty rush" are in the air again. It is well known to those in the Greek community that several fraternities have sent printed invitations to social events to prospective rushees since the beginning of the school year. And it has been rumored that at least one fraternity has offered to pay pledge fees for certain individuals if they will pledge that organization. Is this the true national Greek way?

The last rush should have been an example to all Greeks that violators of rush rules will be learned. In the past the IFC has not levied any punishment to violators, but "The Days of Wine and Roses" are over.

Dean Hess and the members of the IFC are to be commended for their work in drawing up rules governing rush and a system for the strict enforcement of these rules that will punish offenders by monetary fines and periods of social probation.

The IFC has done its work. And it is now up to the individual fraternities to abide by these rules and make this the most successful rush in the MTSU Greek history.

Another challenge will be presented to the IFC and the fraternities they represent this Saturday night in the form of the first all fraternity party. Those attending the function must avoid any action that would give critics of the Greeks any room to downgrade the system.



KAPPA SIGMA HOUSE at 501 East Lytle Street

KAPPA SIGS ON TOP

The Kappa Sigs boast a perfect record in intra-fraternity athletics for the past semester.

The Block and Bridle Club's "Little International" was won by the Kappa Sig team for the second consecutive year.

The interfraternity football championship was won by the Kappa Sig team this fall. The team was undefeated in all fraternity league play. The Fall pledge team also had an undefeated team.

The Kappa Sig volleyball team also undefeated won the fraternity league championship and finished second in the overall intramural tournament.

At this time the Kappa Sig basketball team in undefeated and appears to be the team to beat for the championship.

The Kappa Sigs also boast the intramural hole-in-one golf champion.

Kappa Sigma to Get Charter

The Kappa Sigma Colony here will become the second national chapter on the MTSU campus next weekend.

The installation process will begin at 12:01 a.m. Saturday, March 8. During the installation of officers Saturday afternoon between 1:30 and 5:30 p.m., Sigma Colony will become the Kappa Iota Chapter of Kappa Sigma Fraternity.

Six chapters from across the country will participate in the installation process. These schools participating are Georgia State University, University of Tennessee, Western Kentucky University, Vanderbilt University, University of Chattanooga and Indiana State University.

The highlight of the ceremonies will be a banquet Saturday night. Kappa Sigs, their dates and parents, and

Kappa Sigs

Politically Active

The Kappa Sigma Fraternity is proud of the record shown by its members in campus activities.

Kappa Sigs play an important part in ASB affairs. ASB president Jim Free is a brother of Kappa Sigma. Kappa Sigs hold important positions as Election Commissioner, Parliamentarian of the House of Representatives, House members, Senators, class officers, justice on the Supreme Court, and are members on various university committees.

Kappa Sigs play major roles in the Tennessee Intercollegiate State Legislature in Nashville. Jim Free, president pro tem of the Senate, Larry Ledford, lieutenant governor, and Jim Garner, Senate clerk, were elected at the last meeting of TISL.

The editor and the news editor of the SIDELINES are also Kappa Sigs.

guests will attend. The main speaker will be Horton Early, Worthy Grand Procurator of Kappa Sigma.

Concerning the weekend, Andy Beasley, Grand Master of the colony, said, "We have been looking forward to this weekend ever since we were the first local fraternity to affiliate with a national."

"There will be approximately 70 out of town Kappa Sigs visiting Murfreesboro and the MTSU campus. We have put a lot of work and preparation into this and I am sure that those involved will always remember this memorable occasion," said Beasley.



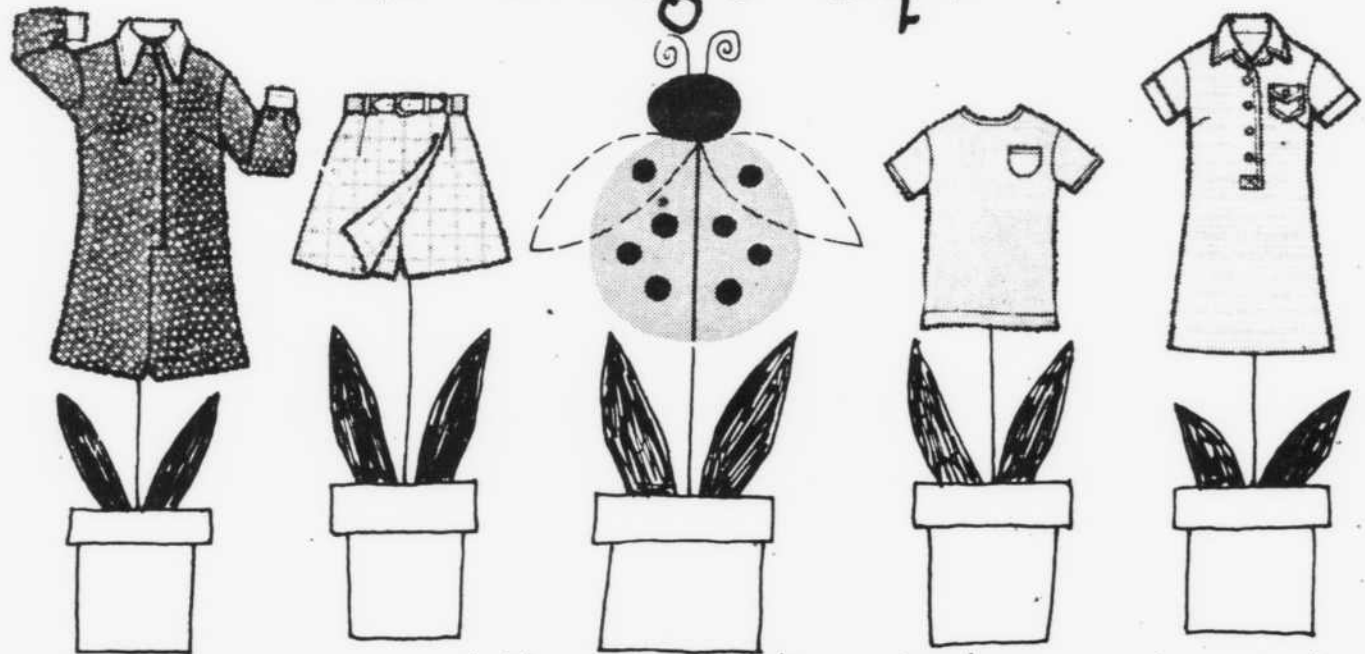
Roy Rogers

DELIVERY SERVICE!

Orders accepted until 9 P.M.
Delivery from 9 P.M. to 10 P.M.

Phone - 896-0290

The Village Square



Blooming now...shirts, dresses, suits, blazers, skirts, skooters, slacks, shorts, coats, knits and beachwear.

Pick a PRETTY
Ladybug
at



The Village Square
1150 East Main Street
Murfreesboro, Tennessee

To purchase new
LICENSE PLATES (or
decals) bring your
1968 registration
title or title card
and document you
received from the
state.

For your convenience the office is open during the lunch hour with staggered shifts.

**BEN HALL
McFARLIN**

Clerk of Rutherford County Court

FREE SHEETS

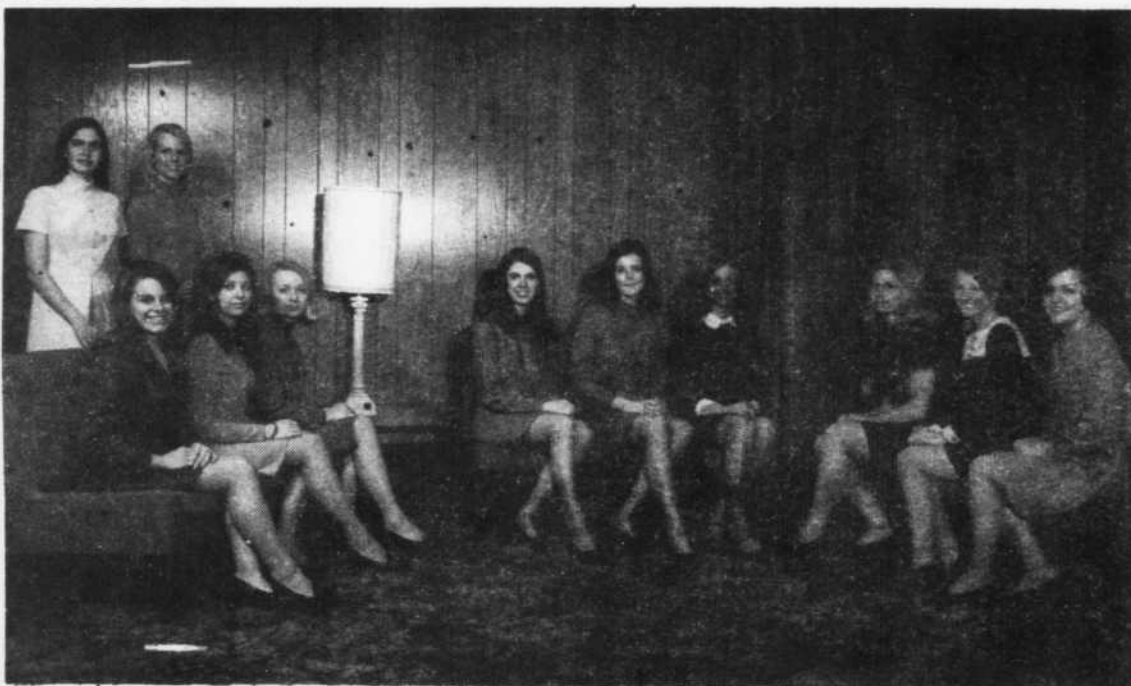


Be sure and register for the free sheets to be given away each Wednesday. Nothing to buy. You do not have to be present to win.

SCRUB-A-DUB
COIN LAUNDRY
Mercury Plaza

SUNSHINE CENTER
Memorial Blvd.

NEXT DOOR TO
FRANK'S IGA



LITTLE SISTERS of Lambda Psi lend support to the fraternity in all activities.

Fraternity Seeks High Ideals

Founded October 25, 1966, with twenty-six charter members, Lambda Psi has sought to emulate the high ideals of its motto; Scholarship, Brotherhood, and Character. The brothers of Lambda Psi have accepted the challenge in all of

these areas and performed with notable success. Lambda Psi has now grown to a brotherhood of fifty representative men with many varied interests and activities yet united in the fraternal bond.

Lambda Psi unanimously re-

solved in December of 1967 to dedicate itself to the goal of obtaining a charter from Sigma Alpha Epsilon. To this end the brothers have attempted to reflect their worthiness of such honor through their endeavors.

In order to obtain a charter from SAE, a local fraternity must formally petition the biennial national convention. The convention will be held this June in San Francisco, California, and will represent the culmination of eighteen months of determined effort by the brothers of Lambda Psi.

In April, 1968, Lambda Psi attended the province convention at the University of Tennessee. Delegates from the eight province chapters along with prominent members of the national organization reviewed every aspect of Lambda Psi. When the convention adjourned, Lambda Psi returned to MTSU with unanimous backing, a distinction that only one other local fraternity had ever achieved.

Additional steps in this petitioning process are being met and mastered daily. Two brothers attended the SAE leadership school this past summer.

Brotherhood Is Key to Success: Lambda Psi

A strong brotherhood has been the key to success for Lambda Psi in many areas of endeavor, especially in service to the university and the community. The big service event each year is the Cerebral Palsy Drive held in the spring. Money is collected through door-to-door donations, roadblocks, and benefit shows, such as the recent basketball game with the WMAK "All-Americans." Money collected during the year is run to Nashville, some forty miles away, by a relay team made up of the entire fraternity. Each brother runs a one mile leg of the marathon relay. The money is presented on stage at the Telethon. In the past two years, Lambda Psi has collected over \$800 for the Drive.

The Cerebral Palsy Drive is only one of the many service projects performed by the brothers. This year, to date, the brothers of Lambda Psi have given Christmas baskets to needy families, held a "Winter Magic" Christmas show for 200 children enrolled in the Project Headstart Program in the Murfreesboro area, held a Christmas party for the children of the Louisa School (for the mentally retarded), and sponsored a child at the ASB Christmas party.

A well-rounded social program is another important aspect of a strong brotherhood. The social calendar of Lambda Psi includes theme parties, bonfires, hayrides, combo parties following formal initiation. This year Lambda Psi formed its own Little Sisters organization which has greatly aided the social program by assisting in the planning and decorating for parties, serving at rush smokers, as well as helping in civic projects. Several joint Little Sister-Fraternity activities are held throughout the year, such as luncheons, banquets, Valentine's Day programs and parties.



If you're hungry for love,
go posh



If you're just hungry,
go to Bonanza

If you want to do the moonlight and roses thing, take her to an expensive place where you even pay for the water. You'll get violins, parsley, possibly her, and a whammy bill.

If she's just plain hungry, take her to Bonanza. She'll get a good charcoal-broiled steak, green salad with dressing, baked potato dripping with butter and Texas Toast. You'll get a reasonable bill, probably way under 4 dollars.

Bonanza really isn't the place to impress a girl. Unless she's your wife, and you had a fight last week about money.

BONANZA
SIRLOIN PIT

Bonanza
Sirloin Pit
in the
Yellow Pages

893-2032

Banquet Room Available for Parties
And Fraternities or Sorority Meetings



Try a new tradition with
plenty of style

You're a traditionalist at heart. But, you want to up-date your fashion image. Try a Cricketeer Charter Cloth patterned sportcoat of 55% Dacron*. Show your individuality in a two-button natural shoulder model with suppressed waist, deep side vents, angled flap pockets and ticket pocket. The brighter, bolder colorings give you a new look with a tradition. It's natural.

CRICKETEER

from \$70.00

Pigg & Parsons
FINE CLOTHES FOR MEN AND BOYS



SIGMA NU's Pete Atchley is MTSU's Raider

Sigma Nu Activities Vary IFC Party Saturday

Sigma Nu members are very diversified in their activities outside of the fraternity. Members are usually caught up in the activities of more than one extra-fraternal organization and still are able to put their equal share into the fraternity's projects.

Derry Cochran, a Cleveland junior, is the tallest Greek on campus being 6-10 and playing on the basketball team. In addition to his duties to the basketball team, Derry is also a former ASB senator.

In keeping with the heritage left by the colony's founders, two Sigma Nus hold top positions in the ASB. Doug Bennett, the only charter member left in the fraternity, is presently Speaker of the ASB Senate and Ron Owens, a junior from Atlanta, Ga., is Chief Justice of the ASB Supreme Court.

Continuing with the active participation in the Inter-Fraternity Council, Kelly Sharbel, commander of Sigma Nu, is also executive secretary of the IFC.

John Fite, Lt. Commander of the colony, has recently completed a foundry in the art department that is to be used for future art projects.

This project was undertaken by John as part of a course in art problems. John, who is an art major, said the construction of the foundry consumed all of last semester. The completed foundry is located in the art barn. It will be there for the future use of all art students.

John said that the foundry consists of two furnaces, one of which is capable of melting 100 pounds of metal and the other capable of melting 200 pounds of metal.

Sigma Nu Colony has planned many activities this semester ranging from after dinner speakers to our White Rose Ball.

We initiated a program of dinner meetings last semester at which were present guest speakers such as Major Edward A. Anderson, advanced section instructor in the ROTC department.

Our house is our home. All work done on the house has been done by the brothers. At the present time, final touches are being put on the major jobs in the house. This is one activity that requires manpower and time.

The brothers went to Nashville Monday, Feb. 24, to host a party for mentally disturbed teenagers. We were accompanied by Dean Martha Hampton. These type of service projects are also planned for the spring. Our White Rose Ball will cap the semester being in early May.

On Saturday night, March 1, the IFC will sponsor a joint party for fraternity members only. This is the first endeavor of this type attempted by the fraternities.

The party will be held in the Rutherford County 4-H Pavillion off 96 Highway in Murfreesboro.

Only fraternity members and dates will be admitted.

Sigma Nu Founded in 1966

Sigma Nu Colony was founded Oct. 13, 1966 as Sigma Delta Zeta local fraternity with twenty charter members. In the past two and one-half years, the local has become the colony of one of the largest national fraternities.

The local, Sigma Delta Zeta, was founded primarily by a group of Associated Student Body officials including Bill Boner president of the ASB, Larry Blick, Speaker of the House, Bobby Freeman, Chief Justice of the ASB Supreme Court, and other ASB workers.

In the following summer, the fraternity began their occupation of their present house located at 602 E. Main St. Since that summer, the house has been continuously worked on by the brothers of the fraternity in order to adapt the house for their use. At the present time, ten brothers are residing in the house.

At the very outset, the fraternity's goal has been affiliation with Sigma Nu fraternity. This goal was achieved on May 8, 1968 when the group received

word from Richard Fletcher, executive secretary of Sigma Nu, that colony status for the local had been approved by the national. They were officially installed last fall.

Since that time the colony has been channeling their efforts to become a chapter of Sigma Nu.

From its founding, the fraternity has competed in all facets of fraternity competition and has participated in all aspects of campus life.

TO BELIEVE IN THE LIFE OF LOVE,
TO WALK IN THE WAY OF HONOR,
TO SERVE IN THE LIGHT OF TRUTH
THIS IS THE LIFE, THE WAY, AND THE
LIGHT OF SIGMA NU.
THIS IS THE CREED OF OUR FRATERNITY.

BIG CHICKEN IS COMING!
FRI. FEB. 28
SAT. - SUN.
MARCH 1-2

One Girl: One Diamond



\$225

The exquisite simplicity of a Zales diamond solitaire beautifully styled in warm 14K gold.

Convenient Terms
Illustration Enlarged

ZALES JEWELERS

LICENSE PLATES may be purchased
at the Rutherford County Courthouse
ALL DAY SATURDAY
as well as Mon. thru Fri.

Ben Hall McFarlin
CLERK OF RUTHERFORD COUNTY COURT

NEW
College
Student Special

NEW!

**ONE DAY
SHIRT & LAUNDRY
SERVICE**

In by four, out by four
the next day.

**KEEN
KLEANERS**

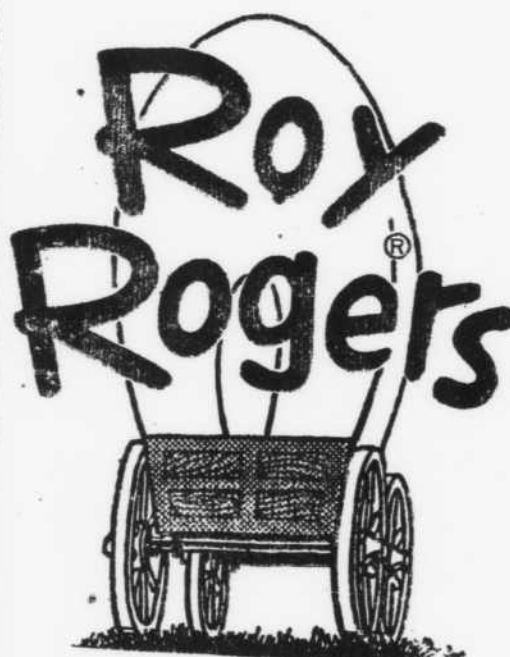
College Heights Shopping Center 1511 E. Main

Slacks,
Skirts,
3 pr. - \$1.30

Pants, Sweaters,
3 pr. - \$1.30

Mix or Match 'em
Ex. 1 sweater,
2 pair of pants -
\$1.30

SUNDAY SPECIAL



129 S. E. Broad

3 pieces of Chicken
French Fries
Cole Slaw
ALL FOR ONLY
\$1.00

SUNDAYS ONLY



HERE COME THE CAPS.

All Areas

CAP's Participate in MTSU Activities

Chi Alpha Pi is active in almost all areas on the MTSU campus.

CAPs play a big role in ASB affairs. Members of CAP are ASB Senators, chairman of school spirit, stage director of "big name entertainment" shows, sophomore supreme court justice, president of junior class, and officers in many campus organizations.

The CAPs help boost school spirit with their blue and white party coats worn at all ball games, and a CAP is

one of the MTSU cheerleaders.

In the fraternity system the CAPs also show leadership with the IFC president and other officers. The CAPs had the first house, and the first rush booklet. They are the only fraternity to win at stunt night and this year won the Homecoming House Decoration Contest.

The CAPs have an active social life with functions varying from river parties to the Red Carnation Ball.

The overall athletic trophy

has been won by CAP the last two years in a row. Last year they won football, baseball, track, and swimming. This year the CAPs won the intramural swimming meet again.

CAPs also take part in various civic projects. They gave 100% in the Red Cross Blood Drive. Other projects include painting the orphan's home, Christmas party for orphan children, helping needy families and Easter egg hunt for faculty and administration children.

Chi Alpha Pi Affiliates With Sigma Chi Frat

Chi Alpha Pi is nationally affiliated with Sigma Chi Fraternity.

Since its inception, the brothers of CAP have sought to align themselves with the national fraternity which they felt to be superior to other nationals in all areas. Sigma Chi was this fraternity.

Continuous correspondence with Sigma Chi national headquarters has been carried on since 1967, and CAP policies have become integrated with those of the national.

For nearly two years the CAP's pledge education has been taken almost entirely from the NORMAL SHIELD, the pledge manual of Sigma Chi.

In the summer of 1967 the Grand Praetor of the Tennessee District of Sigma Chi informed Chi Alpha Pi that its officers had been invited to the 50th Annual Sigma Chi Workshop which was held at the University of Tennessee. Attendance at the workshop strengthened the ties between Chi Alpha Pi and Sigma Chi.

After a visitation by national executive secretary, Wayne Spiekermann, in the fall of 1967 and a report to the national, it was announced that Sigma Chi would give full support to Chi Alpha Pi in establishing a national chapter on the MTSU campus.

Full preparation was initiated by Chi Alpha Pi and the national toward that end. However, it was made known by the national that it fostered no colonial

period or permitted any formal use of Greek letters, stationery or emblems.

The petitioning to Sigma Chi National Fraternity by Chi Alpha Pi for a charter is imminent, and the active brothers and alumni of Chi Alpha Pi look forward to the not too distant future when the attainment of their long and hard sought goal will be realized, being a chapter of Sigma Chi Fraternity.

EAST MAIN MARKET

Your favorite
beverage
always available

MTSU students
welcome!

Mon. thru Friday
8:30 A.M. 10:00 P.M.



GRAND OPENING!

Fri. 28, Mar. 1, and Mar. 2.

CHICKEN CHEF

...so good
it's habit
forming!

home of tender tasty chicken

Drop by and let our chickens help you mine for
gold nuggets — crack one open and WIN OUR
FAMOUS "GOLDEN NUGGETS DINNER"

1305 Memorial Blvd.

OPEN

Weekdays - 11am to 9pm

Fri, Sat, Sun, - 11am to 10pm

Phone 896-4043

YOU'LL REALLY "DIG" OUR "GOLDEN NUGGETS"

Cole slaw, hot rolls, french fries,
or mashed potatoes and gravy.

BIG CHICKEN WELCOMES MTSU STUDENTS!