



SIDELINES



Two fraternities brawl during intramural game

Wesley R. Bush
Staff Reporter

Two fraternities may find themselves unable to participate in intramural sports for the remainder of the semester after a fight erupted during a flag football game last Wednesday night.

Kappa Alpha and Sigma Alpha Epsilon were both disqualified from play following a scuffle that caused the two teams and several onlookers to rush onto the field and join the fight.

No one was seriously injured but some sustained cuts and black eyes.

"They (KA) scored, and the next thing I knew, everyone was running out onto the field," says Craig

Garrison, a member of Pi Kappa Alpha. "They fought for about a minute, and it was over almost as fast as it had started."

But the trouble could be far from over for the fraternities involved.

Campus Recreation, responsible for intramural sports, met Thursday to talk about the fight. The matter was then turned over to Judicial Affairs to be discussed Monday.

Some feel this was unnecessary and that the fight has been blown out of proportion, including Brandon Lee, president of SAE, who helped bring it under control quickly.

"It really wasn't as bad as it's being made out to be,"

See BRAWL, page 3

Frank now accessible through WebMail

Randall Ford
Staff Reporter

Off-campus computer users can now access their university e-mail accounts without having to dial into the university's server, Frank.

The Office of Information Technology (OIT) has installed WebMail 3.51, which features a graphical interface more like that of Hotmail than that of the other software used to access Frank.

"WebMail is accessible from anywhere, as long as people have a

browser that is connected to the Internet," said Jerry Gentry, associate director of OIT.

WebMail, which can be reached at www.mtsu.edu/webmail, might eventually be accessible from the university's home page, Gentry said.

Gentry said, however, that to access WebMail, students must have an outside Internet service provider (ISP), such as Mindspring or America Online.

"If they don't have that, then they can't use WebMail," Gentry said.

See WEBMAIL, page 3



READY, AIM, FIRE!



Lightning watches over the cannon that's fired after each MTSU touchdown. See page 8 for full coverage of Saturday's 52-42 win over Wofford College. Photo by Zack Milligan

SGA Senate prepares for fall elections

New Election Commission approved by Senate

Kelley Dodd
Staff Reporter

The Student Government Association's Election Commission for the 1999-2000 school year was approved by the Senate during the Sept. 15 meeting at the Keathley University Center. Serving on the commission will be Jeremy Baker, Jody Baron, Colleen Jackson and Aaron Tallent.

The Senate is also in the process of developing and distributing questionnaires for students in their prospective colleges.

According to Speaker of the Senate, Megan Smith, the questionnaires will assist senators in acknowledging and addressing any concerns students have, in addition to giving students a voice in the development of new legislation.

In other business of the meeting:

- Senators Chelle Bradburn and Julia Graves announced a new promotion to be held during the upcoming elections on Sept. 22 and 23 of providing a free Homecoming 1999 theme cup to each voter at the polls. Cups can be taken to any of the Aramark food stations on campus for beverage refills at a charge of 25 cents during the week of Homecoming.

- Members of the Senate made plans to visit several Habitat for Humanity homes in Murfreesboro next month to assist in landscaping projects.

- Senators were encouraged to help publicize the various Homecoming activities that will commence on Sept. 26.

Elections approach for Homecoming queen, freshman Senate

There will be five voting booths for the elections Wednesday and Thursday, located at the Business and Aerospace Building, the Recreation Center, the Keathley University Center, Peck Hall and in the cafeteria of the James Union Building.

The following are candidates for a seat on the freshman Senate:

- Clarence McFerren II
- Jocelyn W. Buie
- Joseph Combs
- Joe McKnight
- Beth Anderton
- Ginny Barton
- Erin Edgemon

Candidates for the 1999 Homecoming queen are:

- Kristie Burton, sponsored by Alpha Delta Pi
- Leslia Miller, individually sponsored
- Kela Henderson, individually sponsored
- Grace Awokoya, individually sponsored
- Rhiannon Wilson, sponsored by Delta Sigma Theta
- Tanea McClean, sponsored by Alpha Phi Alpha
- Kerry Lane, sponsored by Sigma Alpha Epsilon
- Lisa Farmer, sponsored by Delta Zeta
- Christa Rhoden, sponsored by the National Panhellenic Council
- Chelle Bradburn, sponsored by Chi Omega
- LaShanda Mott, sponsored by Zeta Phi Beta
- Jannelle Means, sponsored by the Church of God in Christ Revival on Campus
- Kealie Frazier, sponsored by Alpha Omicron Pi
- Megan Moody, sponsored by the Baptist Student Union
- Trina Washington, sponsored by Alpha Kappa Alpha
- Mandy Coatney, sponsored by Kappa Delta
- Erin Patterson, sponsored by Zeta Tau Alpha

Virtual tour of campus now available on Internet



Photo by Pam Hudgens

MTSU alum Heather Burns clicks through the interactive virtual campus tour she designed for the Admissions office.

Randall Ford
Staff Reporter

Would your college search have been easier if you could have toured campuses from your living room? Students who want to enroll at MTSU can now take an interactive virtual tour of the campus.

"Sometimes you can't get on campus for a tour," said Linda Puckett, associate director of Admissions. "But this way you can log on to a tour."

There is a trend among other colleges and universities to create similar websites, according to Lynn Palmer, director of Admissions.

"If you look to other colleges and universities, you'll see links to virtual tours," Palmer said. "But they're usually still shots. We wanted something a little better than that."

The tour, which features interactive

menus, allows users to view panoramic photographs of the University Library, Scarlett Commons and a classroom from the Business/Aerospace Building, business cards of more than a dozen successful alumni and athletic facility interiors.

The MTSU virtual tour is located online at www.mtsu.edu/~admissn/vtour. Admissions officials said they hope to make the virtual tour accessible from a link on the university's home page. The tour uses Macromedia's Flash software. According to Heather Burns, a 1999 graduate of MTSU's digital animation program and the tour's designer, Flash makes the program viewable to users who do not want to use a lot of disk space.

"It takes about as much space as two or three pictures," Burns said. "It's incredibly compact."

Burns spent three months designing the virtual tour. Palmer said the tour is not designed to give detailed facts about

the university or guide prospective students through the admissions process.

"You can go to our webpage and read everything and see what you need to know to get started," Palmer said. "This is more fun."

The virtual tour debuted last week, when Admissions officials invited faculty, staff and students to an open house.

"It's like you get so much more," said Courtney Rushlow, an MTSU junior. "I'm learning a lot about campus, and I already knew quite a bit. It's like people who've never been here know more than the people on campus."

Sherian Huddleston, director of the Records office, said she also enjoyed the interactive tour.

"It gives students a good opportunity to see what we have to offer," Huddleston said. "I wish we had this kind of thing when I started school way back in the dark ages."

INSIDE

- On Campus.....page 2
- Opinions.....page 4
- Features.....page 6
- Sports.....page 8

SPORTS

The Lady Raiders volleyball team sweeps Morehead State. See page 8.

FEATURES

MTSU professor fiddles her way to stardom in Nashville production. See page 6.

WEATHER FORECAST



MONDAY
THUNDERSTORMS
HI 79/LO 62



TUESDAY
RAIN
HI 65/ LO 56



WEDNESDAY
SHOWERS
HI 61/LO 45

On Campus

compiled by Wesley Bush

To submit an announcement for On Campus, come by the James Union Building Room 308.

Sept. 20-21
The Student Government Association will hold three mandatory meetings for those interested in competing in Homecoming events. The meetings are to be held each Tuesday at 5:30 p.m. in KUC 322. For further information, come by the SGA office (KUC 208) or call 898-2464.

Sept. 20
MTSU's chapter of the Society of Professional Journalists will meet to welcome new members and show how America's largest network of working print and broadcast reporters works to serve journalism, its practitioners and the freedoms under which they work. The meeting is from 5 to 6 p.m. in Mass Comm. Room 104. For more info, call Kevin Koelling at 904-8193.

Sept. 20-21

Wesley Foundation is holding "Grease" auditions Monday and Tuesday at 7 p.m. at the Wesley Foundation. Contact Elliott Peterson at 893-0469 for more info.

Sept. 21-22
The Golden Key National Honor Society will hold two chapter meetings at 5:30 p.m. in Room 105 of the Cason-Kennedy Nursing Building. Contact Jenny Crouch at 898-2815 for more information.

Sept. 22
The Undergraduate Sociological Society is sponsoring an examination of the classic film "The Rocky Horror Picture Show" at 6:30 p.m. in Peck Hall 227. This event is free and open to all faculty, staff and students. For further information, contact Jonathan Douglas at 907-1281.

Sept. 28
The Placement and Student Career Day from 10 a.m. to 3 p.m. on the Murphy Center track. All students and faculty are invited. Approximately 100 employers and

graduate schools will participate. For more information, call the Placement Center at 898-2500.

ONGOING
The peer education program (SHARE) is currently accepting applications for the 1999-2000 school year. Applications can be picked up in KUC 303. Those interested may also call the peer education office at 898-5453 for more information.

Lambda Association welcomes new students and invites all to attend meetings every Tuesday night at 7 p.m. in BAS 5118. Contact Talia Elwell at 907-2195 or visit the website at www.mtsu.edu/~mlambda.

MTSU Rugby Football Club invites interested students to attend practices every Tuesday and Thursday at 5:30 p.m. across from Circle K on Main Street. The "Moosemen" were the 1999 Southern Champions and ranked ninth in the nation last year. Call Evan or Todd at 907-5075 for further information.



World News

Marilyn Monroe memorabilia display opens

LONDON (AP) — Marilyn Monroe's driver's license and her invitation to President John F. Kennedy's birthday party in 1962 went on display Sunday before being shipped to New York with other memorabilia for auction next month.

The invitation and program for Kennedy's party at Madison Square Garden, where she sang "Happy Birthday," is valued at up to about \$15,000, the auctioneers, Christie's, said Sunday.

The singer's license, issued in Los Angeles in February, 1956, when she was 29, includes the information: Eyes — blue, hair — blonde.

Clothes, movie scripts and books are also in the London exhibition, which runs until Wednesday.

Tiger mauled in Indian wildlife preserve

NEW DELHI, India (AP) — A female tiger that jumped into a pen with eight males died after being mauled in an Indian wildlife reserve, a domestic news agency reported Sunday.

Four-year-old Chetana was attacked in the Bannergatta National Park on Saturday when she leaped from her enclosure to an adjacent one inside the same cage, Press Trust of India reported.

Members of the Bannergatta Hitarakshana Samiti, an animal lovers group, protested at the park Sunday, claiming the tiger had died due to the negligence of the keepers at the wildlife reserve.



National News

Gore already raising money for general election

WASHINGTON (AP) — Months before the first presidential primary, Vice President Al Gore is raising millions for a potential general election campaign using a strategy frowned on by election regulators.

By July, Gore had already raised \$2 million for a special type of legal fund intended for presidential nominees. The existence of the fund allows him to solicit a second contribution of \$1,000 from supporters otherwise limited to giving a maximum of \$1,000 to Gore's primary campaign.

Previous candidates have used such general election funds to skirt federal limits on spending during the presidential primary season.

Executive accused of using Internet to solicit teen sex

LOS ANGELES (AP) — An executive of the Web portal site Infoseek was arrested for investigation of soliciting sex with a teenager over the Internet, authorities said.

Patrick J. Naughton was arrested Thursday by FBI agents at the Santa Monica Pier. U.S. Attorney's spokesman Thom Mrozek said Saturday.

An affidavit filed in federal court accused Naughton, an executive vice president of Infoseek, of interstate travel with the intent of having sex with a minor, Mrozek said.

It alleged that Naughton, who oversees the Walt Disney Co.'s Go Network Internet sites, sent lewd messages in an Internet chat room to a male FBI agent posing as a 13-year-old girl.



State News

Sentencing hearing for Reid to begin Monday

CLARKSVILLE, Tenn. (AP) — A jury will begin hearing testimony Monday about whether Paul Reid should be executed for murdering two ice cream parlor workers as part of a holdup two years ago.

The jury of seven women and five men convicted him of all seven counts after six hours of deliberation Saturday. They were two counts of premeditated murder, two counts of felony murder, two counts of especially aggravated kidnapping and one count of especially aggravated robbery.

Reid, 41, was accused of kidnapping Michelle Mace, 16, and her boss Angela Holmes, 21, after a holdup at a Baskin-Robbins ice cream store on the night of April 23, 1997.

Their bodies were found the next day at a state park a few miles away. Their throats had been slashed.

Admission requirements increased at UT-Knoxville

KNOXVILLE, Tenn. (AP) — The rules are changing for admission to the University of Tennessee's main campus. No longer will getting in be a sure thing for Tennesseans with minimum grades and test scores. UT-Knoxville is throwing out its old admission guarantee for any Tennessee applicant with at least a 2.75 grade point average and an 18 on the ACT or 860 on the SAT.

Under the new rules, the size of the freshman class will be decided first, then it will be filled according to the quality of the applicants.

MORE THAN A USED CD STORE!

WE BUY, SELL, TRADE:

- CD's
- TAPES
- VIDEOS
- VIDEO GAMES
- RECORDS
- POSTERS

2 Locations
Murfreesboro
230 Stones River Mall Blvd.
(Next to Sir Pizza)
849-4070
111 1/2 W. Lytle St.
898-1175

THIS AD WORTH \$1 OFF 9/30/99

digital planet

THRONEBERRY PROPERTIES

Convenience, Style & Affordability are only a matter of choice!

Holly Park & Park IV
2426 E. Main 896-0667

Windrush & Applegate
1735 Lascassas 893-0052

Rosewood
1606 N. Tenn. 890-3700

Pine Park & Birchwood, Oak Park I, II, III
1211 Hazelwood 896-4470

Gateway
1841 New Lascassas 848-0023

Constructed, Owned & managed by Buford Throneberry & Family
A trusted name for your apartment needs for over 28 years.
www.throneberry.com

The Winners

of Free Concert Tickets in the Sidelines/Midlander Ticket Give-away are:

Andrew Bynum
Brooke Howard
Michele Mackersie
Christle Price
Timmy Gibbs

Contact the Student Publications Office:
JUB Room 306 ext. 2815.

Buy shoes
Tie shoes
Right foot
Left foot
First steps
Baby steps
Giant steps

A baby was born with a disability

Creating solutions. Changing lives.

SPECIAL MTSU MONTHLY SERVICE RATE

- No Contract
- No CREDIT Pages
- No Credit Checks
- Competitor's Pagers Activated Free!

\$4.61 Per Month

GEORGETOWN SQUARE
W. Northfield at Grand St.
Murfreesboro, TN 37132
895-1909

SMYRNA VILLAGE
575 S. LOWRY ST.
SMYRNA, TN 37167
220-0659

Cellular Connection

Pregnant? Find Out For Sure

Call us at 893-0228 or
24-Hour Information Line at 221-0627

ALL SERVICES FREE AND CONFIDENTIAL

106 East College Street • Murfreesboro, TN 37132
E-mail us at www.boropregnancy.org

PREGNANCY SUPPORT CENTER

Shoelless Goes

Now Hiring All Positions
apply in person

1850 Old Fort Parkway • 893-2028

JADE DRAGON

Chinese Restaurant
International Buffet

Buffet

	Lunch	Dinner (Sun-Thurs)	Dinner (Fri-Sat)
Adults	4.95	7.95	8.95
Children			
8-12 yrs.	3.75	5.95	6.95
4-7 yrs.	2.95	4.45	5.25

OPEN 7 DAYS A WEEK

LUNCH BUFFET 1:00AM - 3:00PM
DINNER BUFFET (SUN-THURS) 4:30PM - 8:30PM
DINNER BUFFET (FRI-SAT) 4:30PM - 9:30PM

10% DISCOUNT FOR MTSU STUDENTS AND FACULTY

1433 Memorial Blvd. • Murfreesboro, TN 37130 • Tel: (615) 907-3322

KUC MINI MART

Bottled Water
Gatorade
Sobe Tea
ICEES-Cola & Cherry

Deli Sandwiches
Ice cream

60" TV
Tobacco products
Air-conditioned!

Hours:
Mon.-Thurs. 7:30am - 10pm
Fri. 7:30am - 9:00pm
Sat. 9am - 5pm
Sun. 3pm - 9pm

898-5562
located on 3rd floor

Renovation of Todd considered high priority

Staff Reports

Construction on the former home of Todd Library and planning for MTSU art and science facilities are considered three of the Tennessee Board of Regents' (TBR) top priorities, according to state documents.

The TBR recently released a list of 26 capital projects for higher education institutions as priority for funding in the fiscal year 2000-2001.

Renovations on the Todd building, which would cost \$8.7 million, ranked number three on the list.

Planning for a new science building ranked number 19, and planning for a new art facility was number 22.

"I'm optimistic and hopeful something will happen so we can get money for renovation of Todd Library and planning money for

art and science buildings," said James Walker, MTSU president.

"Since there were no capital projects funded last year, we're in the same position this year as we were last year," Walker said.

The TBR's list will be submitted to the Tennessee Higher Education Commission, where it will be merged with a similar list compiled by the UT board. THEC governs both of the higher education boards.

Higher education capital projects weren't appropriated for the current fiscal year because of the shortfalls in the state's budget.

State officials project that could leave a \$300 million shortfall in higher education funding.

Legislators and lobbyists are considering restructuring the state's tax system.

Governor Don Sundquist is expected to call a special legislative session on taxes later in the year. ■

BRAWL continued from page 1

said Lee.

Members of other fraternities, however, do not share Lee's opinion and feel that there should be some type of discipline to avoid such fights from happening in the future.

"I didn't think there would even be discussion about it," Garrison said.

"I thought the rule was that if you got in a fight, you weren't allowed to play."

The night following the game, the SAE house was vandalized, and Lee said that a police report was filed. Suspects are yet to be identified, although it is said that a surveillance camera recorded the crime.

Lee regrets that the fight occurred and added, "Fighting is never going to solve anything. When fraternity members start acting like men is the only time that things are going to change."

Thomas Roddy, president of KA, was unable to be reached for comment. ■



THE GTE VISA

Apply on the web and get up to \$20 of FREE calling time.

- \$5 of FREE calling time just for applying.
- Apply on the internet and get an additional \$15 of FREE calling time when you make your first purchase. (\$5 if you apply by phone.)
- Get a 5% rebate towards calling on all purchases.
- No annual fee.
- No credit history required.

APPLY TODAY!

www.gtecard.com or 1-888-591-7900

*Calling time will automatically be credited to your GTE Calling Card account. *When you carry a balance from month to month. Call our toll-free number or visit our web site for complete disclosure of terms and conditions.



Crime Log compiled by Shane Newsome

Harassment

Where: Cummings Hall
When: Monday, Sept. 13
What: A Cummings Hall resident reported receiving obscene phone calls.

Where: New Library Building
When: Wednesday, Sept. 15
What: A library worker reported receiving an obscene phone call. The call was recorded by the victim, and a copy of that tape was given to a public safety officer.

Sex Offense

Where: Student Recreation Center
When: Monday, Sept. 13
What: A medium built black male was seen exposing himself outside of the weight room window. The offender was described as weighing approximately 160 pounds, wearing a green shirt and white parachute pants. He was viewed leaving the scene on a bicycle.

WEBMAIL continued from page 1

"They have to still dial in and use Pine."

Some Frank users have configured their accounts to become SLRP accounts, making it possible to use the university's server to receive graphical Internet. Gentry said his office does not recommend or support SLRP accounts, mainly because it causes extra traffic through Frank's connections.

"It's not a good way to go," Gentry said. "If you've only got so many lines, you don't want them tied up like that. Some people will just leave that up instead of checking their mail and signing off."

"We don't promote it, because it's not efficient for the use of our motor pools."

Erica Wilson, a lab assistant in several computer labs for Housing and Residential Life, said students have been using WebMail from the labs' computers.

"Some of the people who have tried it say they can't get

connected," Wilson said.

Gentry said some students might have difficulty connecting to WebMail from campus, which is one of the reasons it is not recommended for students using lab computers.

"It's not the quickest way to go from there," he said. "And there are some cache issues. Theoretically, someone could get into someone else's e-mail on campus. That's why we don't suggest WebMail for students on multi-user computers."

OIT recommends that students use Mulberry or Pine to access e-mail from on-campus labs.

Gentry said he has not heard any other complaints, even about some of the more inconvenient features of the software.

"There's no way to keep a copy of your sent mail, unless you send a copy to yourself," Gentry said. "It also won't wrap around the lines on your mail. You have to manually hit enter, which you don't have to do with other programs. But it does let you see attachments, so that's good. ■

CHELSEA PLACE

One and Two Bedroom Apartments Available

2 Bedroom, 2 Bath Deluxe Special

Limited Time Only

910 S. TENNESSEE BLVD
893-3516



SENIORS AND GRADUATE STUDENTS CAREER PLACEMENT ORIENTATION

You're Graduating— Now the Job Search Begins.

Resume Writing and Interview Preparation

Thursday, Sept. 16, 3:00pm, KUC 316
Monday, Sept. 20, 11:00am, KUC 322

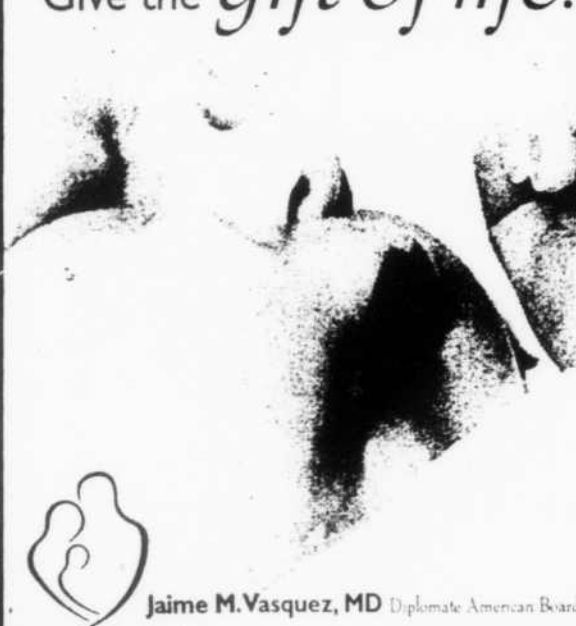
Sponsored by the MTSU Placement Center
KUC 328, 898-2500

Give the gift of life. Become an egg donor.

Most couples yearn to experience the joy of parenthood. Unfortunately, there are many women whose only hope for pregnancy is through in vitro fertilization (IVF) with donated eggs. That's why we are reaching out to you—to help couples become families.

You can give an infertile couple the gift of life without affecting your own chances of conceiving in the future through egg donation. If you are between the ages of 21 and 30 and would be interested in assisting a couple experiencing infertility, contact the CENTER for REPRODUCTIVE HEALTH at 615.321.8899.

jaime M. Vasquez, MD Diplomate American Board Obstetrics & Gynecology • Subspecialty Certified in Reproductive Endocrinology & Infertility



CAREER DAY FOR ALL STUDENTS

Tuesday, September 28, 1999

Murphy Center Track

10a.m. - 3p.m.

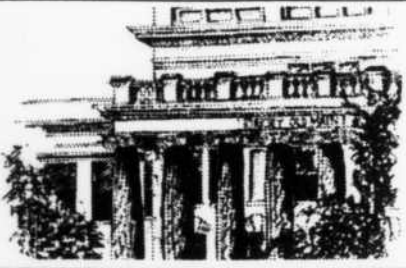
125 Employers and Graduate Schools

Representatives of business, governmental agencies and graduate schools will be on campus to provide information about careers, part-times and full-time employment opportunities. Get information on your career choices and learn about new career possibilities.

Network and present your resumes to these representatives.

Sponsored by the MTSU Placement and Student Employment Center





OPINIONS

"Were it left for me to decide whether we should have a government without newspapers, or newspapers without a government, I should not hesitate a moment to prefer the latter."

—Thomas Jefferson
Murfreesboro, TN

4 ■ SIDELINES

Editorial

Students should stop littering on campus

Certainly everyone remembers the owl telling us, "Give a hoot, don't pollute." If not, maybe you can recall the cute little insect reminding us, "Don't be a litterbug." If there's still no connection, look on the back of a soft drink can. You're almost sure to see "Reduce, reuse, recycle" printed on the back.

These campaigns remind us to consider the consequences of littering and failing to recycle. Obviously, many MTSU students missed the point.

Take a walk across campus, specifically the KUC courtyard, and observe the various bottles, cans and unwanted papers strewn on the ground. One might also notice the abundance of cigarette butts all over the sidewalk.

Now take a second look. Just about every few yards you'll see at least one trash can, recycling bin or ash tray.

Carelessly flicking cigarette butts not only creates an ugly environment, but it also could cause fires. A recent fire outside the Woodmore Cyber Cafe is believed to have been caused by a lit cigarette.

It would make sense that students would respect a brand new establishment a little more than that.

Also, it takes the same effort to pitch an empty wrapper into the appropriate waste container as it does to throw it on the ground. MTSU even makes it easy by placing these receptacles in convenient areas.

Along with the obvious reward of knowing you did the right thing, recycling certain materials contributes to scholarships. Recycling that empty soda can could make the difference.

The post office also offers a recycling area for unwanted mail. There's no need to chuck it on the ground as you walk across the courtyard.

MTSU pays workers to keep the campus looking as clean as possible. We're all adults here. Therefore, their job shouldn't be as difficult as it is.

So, next time you ruin your new pair of shoes by stepping on someone's unwanted packet of ketchup, remember how easy it is to clean up after yourself.

- Amanda Virgillito, Features Editor

Views from the Crowd

by R. Colin Fly, Staff Columnist

Students must fight for rights on campus

Guess how many cows are on the MTSU campus everyday?
Over 18,900.

Moo. Go ahead students, moo. We are nothing more than livestock at MTSU. The funny thing is no one seems to mind. Just push us through the campus with cattle prods and brand a diploma on our butt. We don't seem to mind anyway.

What? You don't believe me?
SGA President Andrae Crismon's first town hall meeting was more like a linen closet meeting. More people are involved in a two car accident than in his chat. Crismon says it's a lack of advertising. I hope for his sake as president and our sake as a campus that he is correct.

There was a six percent tuition raise last year. The Tennessee budget is supposedly in a financial crisis. Guess who's going to help foot the bill while more and more programs get sliced? Sadly, no students make a stand. We take it.

"There's nothing we can do."
Wrong. No one parades on Dr. James Walker's lawn. He's the president of the university, in case you didn't know. Can you find the president's house, students? No, not Washington, D.C.

I'm sick of paying higher and higher costs while my courses close due to lack of teachers. Only one in three students graduate after six years here.

While I may not agree with recruiting tactics, I do appreciate organizations on campus that

campaign for improvements. We need them badly.

If you feel like you've been had, call everyone you know. Art majors, fight for Todd Library. On-campus students, fight for better dorms; don't conform to higher costs to live in Scarlett Commons. It only has room for about 450 students, while taking up a space that could hold at least 900 residents. Upset over parking, commuters? Don't take "we're doing the best we can" as an answer from the parking authority.

Non-traditional students, some of you did it. You rallied, protested and marched against the war in Vietnam. You congregated and became a vital force of the time period. Do you expect your children to come through in a time of crisis?

I'm as guilty of complacency as the next student is. However, I want to be part of a generation that is better than the last one.

I'm not saying that problems at MTSU equate with the current problems in Kosovo or previous wars in Vietnam or Korea.

Simply, this generation has conflict all around. Now, we must decide when enough is enough. Start with your school, expand to your nation. Don't end up in the sausage grinder with the other children. All in all, we are not just another brick in the wall, Pink Floyd.

That's the view from the crowd. E-mail me with comments or suggestions at MTSUViews@email.com or Sidelines at stupubs@mtsu.edu.■



From the Mailbox

Greeks not wasting campus space

To Whom It May Concern:

This letter is in regard to Josh Ezzell's article about the wasted space for fraternities. There are a few points left out that should let the wind out of your sails, Mr. Ezzell.

A) While fraternities and sororities may be the minority on this campus, we are the biggest driving force behind student activities on this campus. For example, we are the largest group of students that go to football games. We are also the largest group of students to participate in Homecoming and the parade. Mr. Ezzell, this is just to name a few.

B) While MTSU is initially giving the land for our houses, we (fraternities) are paying \$10 million for these houses through a mortgage. These houses will be home to almost 300 men when they are done and will be a tool for the university to use when recruiting students.

C) Mr. Ezzell, I am not sure if you have ever been to a fraternity party, but they are a lot more laid back and controlled than non-Greek parties. We have non-alcoholic drinks for those that do not want to drink. We also have a very extensive designated driver program to get our friends home safe for the night. How many non-Greek parties have you been to that offer that? Probably not many.

Mr. Ezzell, this is yet another example of how "Sidelines" and particularly its writers are quick to bash Greek life without experiencing it. Maybe if you would do a little research you would see that we are an intricate part of this university. I hope you will take this into account before you do this next time.

Brent Campbell
Kappa Alpha Order

Controlling production of guns key to stopping violence

Keith Ryan Cartwright
Staff Columnist

Historically, Republicans are known as conservatives who believe that less government is more and typically tend to support businesses — large ones at that.

Having grown up in Wisconsin (a notorious Republican state considering the tiny city of Ripon is known as the birthplace of the Republican Party), it's not at all difficult to figure out what kind of political views I've developed over the years.

Yes, in case I need to point it out for you, I'm a Republican and proud of it.

However, there's been one thought permeating through my mind more and more during the past few years: gun control.

Everytime there's a random act of violence reported on the nightly news, which seems to be more often than not, I can't help but ponder the idea of what can be done to stop the chaos.

The one idea that continues to come to mind breaks two very Republican ideals with one thought: limit the manufacturing of guns.

That's right, forbid any more companies from joining the ranks of gun producers, and limit those companies which already exist from endlessly manufacturing these weapons, which appear to serve no purpose other than to take innocent lives.

Implementing such a regulation, however, would require Republicans to take a stand against a certain large and powerful industry and say, "Enough is enough."

I, for one, am all for free trade. I believe in the American dream. It's one of the few things that keeps me going from day to day.

Many feel that the growing number of acts of violence is due to a decline in moral values found in today's society. I agree, and very much so.

But while I agree that those who lash out and shoot at crowds of people with the intention of killing as many as possible lack morals and values, I also believe that people who are financially cashing in on the manufacturing of guns which are used in those immoral acts are also morally corrupt.

Weapons were initially produced to arm our military and law enforcement officers. Now ask yourself this: why, if they have all the weapons they need, do we continue producing more?

Why? Because overproduction, unfortunately, has become the American way. Gun production at its current rate, however, doesn't seem to serve a valuable purpose.

Take Glock for instance. Based in California, the handgun manufacturer produces 21 models, including .45s, .357s, 10 mm's and the all too infamous 9 mm.

What purpose does it serve either myself or, for instance, an impressionable nine-year-old in Boone, Iowa, to log onto the Internet and visit www.ugw.com, read in detail about Glock's various features and even link to other sites that sell the handgun as well as a multitude of accessories?

There is no sensible purpose. At least not one I can think of.

Sure, in a perfect world we could talk sensibly with everyone, and no one would ever cause harm to others. We would be able to reach out to these gun-toting, mentally deranged criminals and heal them of their illness.

It's evident, however, that we don't live in a perfect world.

More importantly, we can no longer allow political party lines to hinder the saving of lives. It's become even more evident that the 'less government is more' theory I was raised on isn't always the best way to govern.■

Left and out in the Semideep South by Joshua Liner, Staff Columnist

We need values in society, but not Christian ones

Recent months have seen attempts to display the Ten Commandments in various civic buildings around the South, sparking predictably high emotions and debate over the question of Church and State separation.

Equally predictable is the tendency of this debate to divide itself into two basic standpoints: (a) The Christian view—or at least the one I am considering—is that the Commandments are good or valuable and should thus be invoked.

Opposing this is (b) the liberal view that they shouldn't be invoked because it is not the State's business to officially endorse any particular set of values whatsoever.

I find both positions problematic and will propose instead a third which is a combination of the two: (a) Our legislation should indeed be informed by conceptions of value, but (b) we should nonetheless reject Christianity in its dominant form as failing to meet any worthwhile criterion of this.

In short, it is not on the basis of value neutrality that we should reject Christianity, but rather due to the shortcomings of the Christian value system itself.

On the one hand, the liberal position is characteristically incoherent: our civic laws are nothing if not a reflection of some set of values. Indeed, what are our laws if not (purportedly) good ones? The only alternative to selecting them on the basis of their value amounts to wholly random, arbitrary legislation.

Addressing the Christian position is more difficult. It is not that I reject the essential usefulness of most of the Commandments.

My point is that invoking explicitly Christian doctrine amounts to invoking in tow a basic style or method of moral

reasoning which I find problematic. Specifically, the "Christian view" I am considering is a belief that moral problems for the most part rest on the shoulders of individual persons; what is wrong with the world, morally speaking, amounts to individual wrongdoing, and thus remedying this is a job for individuals, as individuals.

This is reflected in the Protestant emphasis on personal conversion; sin is a thing one chooses on one's own, and atonement is a thing "between he and God" alone.

The most pressing problems in our society, as I diagnose them, do not begin to be addressed by such an individualist approach.

Our worst problems are less with individuals than with the social relations which hold between them; these concern the ways in which human beings as a whole organize themselves relative to one another, and this organization is not subject to the will or control of any single individual.

These are, in a word, political problems, and Christianity fails, in short, because it is not genuinely political.

Even those problems which appear to be mere matters of personal morality—the sort of thing the Commandments appear to be addressing—can be shown to have a largely political nature. In short, being an effective moral agent requires certain things, and political systems can do better or worse jobs of providing these to its citizens.

Therefore, how well a system does this bears upon just how much it can expect its citizens to behave morally.

(1) For example, the fact that we often excuse, say, sick people from performing certain moral duties—attending work to support dependents, for instance—shows

that on some level we see a connection between one's being freed from certain physical discomforts or deficiencies and his or her moral performance.

This is to say that having certain basic human needs met is a condition for moral agency; an effective moral agent must not be preoccupied with hunger, extreme temperature, pain and so forth. This, in turn, requires a certain share of material resources.

Likewise, moral deliberation requires sufficient free time and adequate energy to deliberate well (this reinforcing the need for resources—nutritious meals, etc.).

I would even argue that a measure of happiness is needed here, as we are likely to mistrust the moral decisions of acutely depressed people; this may itself demand some basic stock of possessions, recreation time, and an overall security that one can count on these in the future. Any political system then, which fails to provide for basic human needs limits the moral claims that can reasonably be made upon its members.

(2) Likewise, citizens cannot be required to act rightly without knowing which acts are right and why they are so. Effective moral deliberation requires a basic level of training and intelligence; an understanding of this is behind the fact that we excuse the poor behavior of children and other simple folk because they "don't know any better." Thus, free and universal education is a second requirement of any political system which seeks to guarantee the moral efficiency of its citizens.

Our present political system doesn't guarantee these conditions, and they are far from being met for all persons. To the contrary, capitalism does much to work against the likelihood that they will ever

come about.

Juliet Schor's "The Overworked American" shows how such an economy subordinates all other concerns to that of ever increased production levels—which any CEO will admit must be done to stay competitive.

This gets necessarily translated into proportionately longer hours, faster and more tiring labor, lower real wages (and thus less "needs-meeting" power) and greater chance of layoff for the average worker.

And as the search for new domestic markets creates an increasingly integrated economy, investment of resources in "unprofitable ventures," like better or higher education, dwindles at the same rate.

(3) Finally, moral behavior requires an identification with others. Extending one's moral consideration to another is an empathetic gesture, which means that it supposes a recognition of some shared experience between the two, a sense that the moral agent "knows where the other is coming from" and can thus imagine himself in his place.

Political liberalism, with its rights based legal ethic, portrays other people as little more than potential constraints on one's own behavior, as so many obstacles to be gotten over and around.

The capitalist economy reinforces this basic antagonism (a condition Marx called "alienation"), as the economic subject must view others as agents with whom he or she must compete for limited resources and opportunities.

In this way our present system discourages empathetic connection and the shared projects which make it possible.

It seems, then, that the personal is still the political.■

Sidelines
welcomes letters to
the editor. Simply
drop them by
JUB 310 or
email them to
stupubs@
mtsu.edu.



Letters may be edited for length or grammar.

SIDELINES

P.O. BOX 42
Murfreesboro, TN 37132
EDITORIAL: 898-2337
ADVERTISING: 898-2533
FAX: 904-8487

EDITOR IN CHIEF
MANAGING EDITOR
NEWS EDITOR
OPINIONS EDITOR
FEATURES EDITOR
SPORTS EDITOR
PHOTO EDITOR
COPY EDITOR
FLASH! EDITOR
GRAPHICS DESIGNERS

Lesli Bales
Jamie Evans
Randall Ford
Angela White
Amanda Virgillito
Josh Ezzell
Derrick Wilson
Pam Hudgens
Susan McMahan
Becky Curtis
Raymond W. Hutzler
Michelle Schaefer
Justin Steward
Marisa Calvin
Rebecca Neff

AD DESIGN
ADVERTISING MANAGER
ADVERTISING REPRESENTATIVES

Alison Davis
Suzanne Franklin

STUDENT PUBLICATIONS DIRECTOR
Jenny Tenpenney Crouch

"Sidelines" is the non-profit, editorially independent student newspaper of Middle Tennessee State University and is published every Wednesday during June and July and on Monday and Thursday during the fall and spring semesters. FLASH!, the entertainment magazine, is published every Wednesday during the Fall & Spring semester. The opinions expressed herein are those of the individual writers and not necessarily "Sidelines" or the university.

Stop stereotyping Greeks

Kelley Dodd
Staff Reporter

I believe I am speaking for myself and the other 1,200 plus students on this campus who belong to a Greek organization when I say this: leave us alone! I am unimaginably tired of all of the anti-Greek comments that I have heard and read this semester alone.

Just because we are actually attempting to make a difference in our lives and the lives of others does not mean that we are "harassing" or "bothering" anyone on this campus.

Is it so wrong to offer other students the opportunity to build their self-esteem, find a family at school, and learn valuable leadership skills all while possibly meeting their life-long friends? I don't think so.

We as members of Greek organizations have lives, and well-rounded ones at that.

We make good grades, spend numerous hours with community service projects and national philanthropies, support the university and offer the

opportunity to hold positions in each member's prospective chapter.

Most importantly, we offer the support and unique friendships that cannot be found anywhere else other than one's own family.

I chose to join a sorority two years ago because I yearned for a family away from home, and I found it with my sorority, as others have found in their own fraternities and sororities.

I have developed wonderful friendships with my sisters, and I would not trade that beneficial aspect for anything.

Greeks participate. Greeks study. Greeks are involved. Greeks are achievers and leaders.

We are not groups of air-headed, materialistic, snobby alcoholics, despite the stereotypes.

Sure, there are some members of fraternities and sororities that like to party a little too much and act a little too arrogant.

However, there are people like that who aren't Greek.

My point is, if you don't know what Greek life is all about, then you do not have the right to complain. Get over it. ■



VOLLEYBALL

CO-REC IFC PANHELLENIC

6 person teams

Sign-up:

September 20 - October 5
@ Campus Recreation Office

Captain's Meeting: October 6 @ 5:00pm
in the Campus Recreation Office

Officials Training: September 30th, 6-8pm
in the Campus Recreation Office



For more information, call Tina at 898-2104.

AT TIAA-CREF, LOW EXPENSES ARE A HIGH PRIORITY.

All financial companies charge operating fees and expenses – some more than others. Of course, the lower the expenses you pay, the better. That way, more of your money goes where it should – toward building a comfortable future.

As the largest retirement system in the world,¹ we have among the lowest expenses in the insurance and mutual fund industries.²

In fact, TIAA-CREF's 0.35% average fund expenses are a fraction of the expense charges of comparable funds.³ It's one reason why Morningstar says, "TIAA-CREF sets the standard in the

financial services industry."

A focus on your future

Of course, expenses are only one factor to consider when you make an investment decision. Morningstar also noted our commitment to "consumer education, service" and "solid investment performance." Because that can make a difference in the long run, too.

At TIAA-CREF, we believe people would like to spend more in retirement, not on their retirement company. Today, over two million people count on that approach to help them build financial security. So can you.



Ensuring the future
for those who shape it.™

To find out more – give us
a call or visit our website
1 800 842-2776
www.tiaa-cref.org

¹ Based on \$250 billion in assets under management. ² Standard & Poor's Insurance Rating Analysis, 1999 and Lipper Analytical Services, Inc., Lipper Director's Analytical Data 1999 (quarterly). ³ Morningstar Variable Annuities Ltd. 6/30/1999. Of the 6,332 variable annuities tracked by Morningstar, the average fund had total fees combining annual expenses of 0.84% plus an insurance expense of 1.26%. TIAA-CREF expenses are subject to change and are not guaranteed for the future. Past performance is no guarantee of future results. TIAA-CREF Individual and Institutional Services distributes CREF certificates and interests in the TIAA Real Estate Account. For more complete information, including charges and expenses, call 1 800 842-2776, extension 5509, for prospectuses. Read them carefully before you invest or send money.

8/99

AUDITIONS



Book, music and lyrics
by Jim Jacobs and Warren Casey

Sept. 20 & 21 – 7PM

(MONDAY & TUESDAY)
No prepared material needed

THE WESLEY FOUNDATION

Across from Gore and Clement Halls and the new Library
893-0469



Homecoming Queen and Freshman Senate Elections

4 Convenient Locations!!!

BAS 10am - 4pm

KUC 10am - 4pm

JUB 10am - 4pm

REC 4pm - 8pm

September 22nd & 23rd

!!VOTE!!

FEATURES

6 ■ SIDELINES

Murfreesboro, TN

New professor moonlights in the spotlight

Benita Holmes
Staff Reporter

Amy Macy, a new instructor in the recording industry department, will be starring in a production at the Ryman Auditorium in Nashville.

The show, *Smoke on the Mountain*, will run Sept. 9 through Oct. 31.

Macy will play Denise, the youngest daughter in an evangelist family in North Carolina in 1938. The family is planning a Saturday night production of their own, and the musical explores their story.

The production is unique because each actor is also an instrumentalist and must play in the production. Macy's talent will be showcased as she performs on the guitar, fiddle, banjo and mandolin throughout the production.

"It's really a good production, but it's a stretch for me because a lot of these folks come to the show as actors who have learned to play instruments. I come to the show as a musician who has to put on an actor's hat," Macy said.

Rehearsals for the production have been equally "stretching." Since most of the actors in *Smoke on the Mountain* are involved in other productions at the Cumberland County Playhouse, Macy had to drive to Crossville each day after classes at MTSU for the last three weeks.

Macy decided to audition for the production after reading about it in the auditorium's newsletter.

"Anytime someone I knew went to see the show, they would always tell me that it would be a perfect fit for me and to audition for it," said Macy.

Macy's love for music started as a child in her hometown of St. Louis, MS. Her father sang her to sleep each night and she and her sister played music together.

While in high school, she learned to play classical violin, but she still fiddled on the weekends. Her first two years of college were spent at Millican University in Decatur, IL; and she completed her music education degree at Belmont University in Nashville after moving there to pursue a performance career with Opryland.

Upon completion of her degree in December, it was difficult to secure work in the field of education, so Macy worked as a receptionist for Mary Tyler Moore Records. She eventually became an assistant to the label's president. After working for MTM Records, Macy was hired by Marie Osborne and began touring with her as a backup singer and instrumentalist.

"It's a real hard life. I wasn't feeling like I wanted to wake up forty years old still going down the highway on a bus. I needed to get another plan," said Macy.

After leaving Osborne, she went to work in the music industry at RCA records and later went to work in the marketing department of MCA records.

After a year at MCA records, she worked for Sparrow Records as the director of sales for the Christian Bookstore Association. Macy eventually went back to work at RCA, where for the past five or six years she headed its national sales.

When she wasn't touring with Marie Osborne or working in sales and marketing, she taught school and moved to Dallas to start an all girl bluegrass band with her sister. Although the two are no longer part of the band, it was a huge success and they eventually called themselves the Dixie Chicks.

"I'm so happy to be where I am right now. This is the perfect fit for me. I can stay home, sleep in my own bed and teach—which is what I wanted to do in the first place," Macy said.



Photo by Zack Millican

Teacher by day, actress by night. Amy Macy is featured in this month's production of *Smoke on the Mountain* at the Ryman Auditorium.

When asked what advice she would offer students Macy says: "Life is a process. It's not the end gain. I encourage people to keep trying different things. Don't become complacent, it's too easy to fall into a groove and not be able to get out. There's so much of life out there, you've just got to go get it." ■

Students, faculty, staff: lend me your ears

British actors perform Shakespeare this week at Tucker theatre

Dimesa Lee and Amanda Virgillito
Staff Reporters

Imagine a small stage, five actors, eleven characters and almost no props. It may sound simple, but that is all ACTER needs to bring Shakespeare to life.

MTSU will be the first stop of at least six scheduled performances for ACTER, a traveling acting troupe performing Shakespeare's classics based in London, England and The University of North Carolina at Chapel Hill.

ACTER, A Center for Theatre, Education and Research, consists of five British Shakespearean actors who travel to various American campuses to perform and teach Shakespeare's plays.

This semester's play is *Twelfth Night*, a play abundant with disguised identity, love and trickery. This will be ACTER's third time visiting MTSU's campus, having previously performed *A Midsummer Night's Dream* and *Much Ado About Nothing*.

The performances enable the audience to use their imagination. Five actors represent 11 characters on a practically bare stage. They perform in a small area, approximately twenty feet square, which contains 10 chairs that become tables, cauldrons, thrones or podiums, according to the site.

"We believe in play, in the power of Shakespeare's words in performance, and in the rich possibilities created by the imaginations of a participating audience," said Homer Swander, founding director of ACTER.

"In the simplicity lies the magic." Kevin Donovan, campus coordinator for the ACTER residency, said "Part of the fun of this performance is to see them shift from one character to another

in one scene." "An ACTER production relies on the spoken words to carry the play," according to the website.

Actors in the company include Paul Bhattacharjee playing Malvolio and Sir Andrew, Claire Marchionne playing Olivia and Maria, Matthew Radford playing Orsino, Feste and Fabian, Christopher Saul playing Sir Toby and Antonio, and Lucy Tregear playing Viola and Sebastian.

The actors have performed in such companies as the Royal Shakespeare Company, the Royal National Theatre of Great Britain

something that is performed. The actors feel that using performance in the classroom brings a different approach to literary text.

Because the actors have no director, they must "work through dramatic solutions to each scene; in this process each actor gains an intimate knowledge of the whole play, not just his or her roles," the site said.

Donovan claims the program "makes Shakespeare come to life for students."

Donovan said that text oriented lectures combined with performances create an



Photo submitted

Members of ACTER act out a scene from one of Shakespeare's plays.

and the BBC Shakespeare series.

ACTER began in 1975 and has had the same goal since its conception, "to change the way Shakespeare is taught in the U.S.," according to their website.

The actors plan to visit classes in both the speech and theatre departments.

Donovan said that the actors focus on "interaction with students in the classroom."

The site claims that students often fail to read Shakespeare's works aloud or consider them as

understanding. MTSU students, faculty and staff receive free admission to the show.

Performances are scheduled for Thursday, Sept. 23 and Friday, Sept. 24 at 8 p.m. in Tucker Theatre. There is also a matinee showing of *Twelfth Night* scheduled for Wednesday, Sept. 22, but it is already sold out.

"The word is apparently getting out there how good these performances are," commented Donovan. ■

Symphony strikes a chord on campus

Courtney Huckabay
Staff Reporter

Like live music, but tired of those alterna bands on the Knoll?

MTSU's music department offers a constant variety of performances open to the public and free to students. Many students simply do not know when the performances are, who performs or even realize there are free concerts to attend.

A vast majority of the performers are from or affiliated with MTSU. Music genres range from wind ensembles and percussion ensembles to jazz bands, salsa bands and vocal groups.

"Our department presents very fine, quality performances," said Dorothy McCormick, the music department's executive aide. "We've really improved within the last 20 years because we have better student performers and high-quality faculty performers."

Just last Monday the Middle Tennessee Symphony, composed of faculty members, Nashville Symphony players and special guests, performed "The Best of Broadway" with special guest Michael McGuire at Tucker Theatre.

According to McCormick, the show had a great turnout despite the lack of publicity.

"The Middle Tennessee Symphony usually draws a big crowd," McCormick said. "But we always hope for and encourage more people to come."

The Middle Tennessee Symphony was founded by the music department and performs only at MTSU. Professional performers are sought out from all over the nation to collaborate their talents with the regular artists in the Symphony's concerts.

These concerts are not free to students, but tickets prices are discounted.

McCormick said that most of the tickets are around \$5 for students. This money goes to the Middle Tennessee Choral Society to pay for the professional performers that they gather from across the country.

Another big event will be on

Sunday, Sept. 26. Middle Tennessee Choral Society, MTSU Chamber Choir, Oakland Chamber Choir, Riverdale High School Choir and Middle Tennessee Wind Ensemble will perform in the Fall Celebration Concert at 3 p.m. at Tucker Theatre. This 270 member concert is a tribute to McCormick who has been with the department for 33 years and will be retiring in December. Student recitals will also begin Sept. 30 at 11 a.m., and continue on every Thursday through the rest of the year at the Wright Music Building. These are free, so check one out.

One musical student, Matthew Thurman, performed his junior recital Saturday night. This was a required recital since Thurman is a vocal performance major. His bass-baritone voice belted throughout the music hall, releasing a variety of opera and classical style music. This reporter had a chance to talk with Thurman and dig a little deeper into a musician's life.

Thurman hasn't been a singer all his life like most would think. He was originally interested in the recording industry and sang "only to pay the bills." But a teacher soon prompted Thurman to develop his vocal talents and focus on them more than the drums that he already enjoyed playing.

Thurman was accepted to a summer music program in New York where he performed in two operas and one Broadway show, one of which he held the lead part. This experience gave him that final shove to buckle down and become a professional singer.

Thurman will continue his music studies after graduation this Spring and attain a masters degree in vocal performance. When asked what a dream job would be for the aspiring talent, Thurman was hesitant to say.

"I guess anyone's dream would be to get a contract working for a music company, get a manager to get you gigs or just audition all the time to get the job you want," Thurman replied. "The peak of most musicians' dreams is to perform at the Metropolitan Opera House, but that's very hard to achieve."

Thurman feels that his experience here at MTSU has been very helpful for his studies and career.

"The music department is very nurturing and encouraging. It's small, so you get a lot of personal attention and that helps so much. But their numbers are increasing every year," Thurman said. "All the educators I've had have been inspirations to me. They're all people who have been there and done that, and in two words, they can pass on a gift to you. I'm so lucky to have received that here and from other teachers."

Thurman will be performing his senior recital next semester, as will many other music students. Be supportive and go see one, it's quite entertaining.

For a schedule of the upcoming concerts, one can look them up on the MTSU web page or ask to be on the mailing list.

A new program has started its path at MTSU because a new conductor has joined the field this year. Benjamin Shapira conducts the MTSU Orchestra and plans to start a concert lecture series. The first of these lectures will be on Tuesday, Oct. 19 at 6 p.m. in the Wright Music Building. The lectures are free and open to the public and will consist of discussion about a specific composer and then participants can listen to other artists' interpretations of that composer's music. Shapira plans to hold a lecture once a month throughout the year.

McCormick thinks that students will show more interest in the music performances once they realize how good the performers really are. Choral groups are very popular, especially around Christmas time.

"We had to schedule two nights for 'The Messiah' and they both were full houses," McCormick stated. "The percussion and jazz ensembles pretty well fill to capacity also."

Even if one doesn't exactly enjoy these types of music, it could be a learning experience.

McCormick agrees. "I strongly urge our students to come as a part of their education. We do offer something for every taste." ■

Artist hopes Indiana University students will re-think 'feminist art' with her help

Aaron Krause
Indiana University

BLOOMINGTON, Ind. (TMS) — Students at Indiana University will get a chance this semester to learn about women's art from a woman's perspective.

Their instructor will be world-renowned feminist artist Judy Chicago, who said she feels compelled to teach in a university setting for the first time in 25 years because she's determined to

help change negative attitudes about the genre. This semester, Chicago is teaching a studio class and also joining Peg Zeglin Brand, an assistant professor of philosophy and gender studies, to teach a course in art history.

"We're hoping to define the term 'feminist art' after 30 years," Brand said.

IU students also are getting a chance to see Chicago's work in an exhibition titled "Trials and Tributes: A Judy Chicago Retrospective." The exhibit, which

runs until Oct. 31, features some of the artist's best known sketches including "Womanhouse," "The Dinner Party," and "The Holocaust Project."

Chicago, who has been drawing since the age of 5, said her parents were big believers in equal rights for women — a concept to which she said many of her professors at the University of California-Los Angeles didn't subscribe at the time.

Chicago said many of her instructors criticized her use of

breast and vaginal imagery in her works.

So far, many students have said they don't know why Chicago wasn't heaped with praise while she was still a student.

"I really like her message," said Brook Izdepski, a freshman journalism major. "It isn't really about feminism, it's about women being recognized for their worth."

Added Jane Cronkrite, a senior majoring in literature and history: "The imagery is just really simple and effective." ■

**Got a features idea?
Call 898-2917.**



www.dormfurniture.com
Check us out

CENTURY 21
CD'S • RECORDS • TAPES • JEWELRY
New & Used CD's - Records
125 Lasseter Dr.
Murfreesboro, TN 37130
OPEN MON-SAT 11-7

Speed, Sight & Sound
Professional Window Tinting from \$89.95
Car Stereo Installation from \$25.00
Professional Detailing from \$69.95
(prices may vary depending on vehicle)
LOWEST PRICES IN TOWN
All Custom Car Accessories, Parts & Installation
1303C West College St.
895-6114

PUFFING BILLY'S
NEIGHBORHOOD PUB
TUESDAY NIGHT COLLEGE NIGHT
Two for One Draft Beers
Special Food Prices
Karaoke • Prizes
941 NW Broad
896-9661

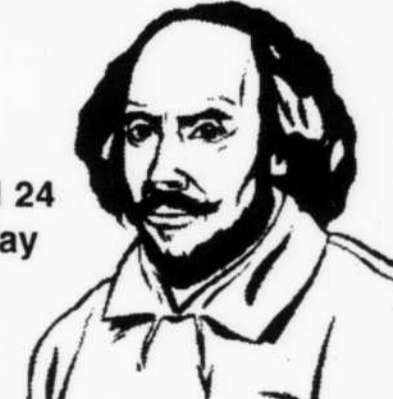
BOWL SHAGADELIC SUNDAYS
"Be There or Be Square"
\$12 Per Lane, Per Hour
Starts 8:30 p.m.
941 NW Broad
896-0945

Join us for... **Jehovah Java**
September 21, 1999
I.U.B. Cafeteria
9:00 p.m.
\$2 per person
people music coffee

Ginny Owens

PLANNED PARENTHOOD
OF MIDDLE TENNESSEE HEALTH SERVICES
Annual Gynecological Examinations • Pap Tests • Counseling Midlife/ Menopause Care • HIV and STD Testing for Males and Females • Sexuality Education • Referrals
Call for an appointment today, come this week for your appointment...
2 convenient locations
MidTown Center
412 Dr. D.B. Todd Blvd.
321-7216
Southeast Center
313 B. Harding Place
832-4840
24 Hour Information
Call 221-0729
Planned Parenthood
Confident Affordable Fast Service

BE A PART OF HISTORY...
HOMECOMING 1999
BLUE RAIDERS
Support the Raiders as they play Troy State in the first Homecoming Game in Division I-A!
HOMECOMING '99 I-A ALL THE WAY!
Saturday, October 2nd
Homecoming Parade
East Main Street - 10am
Alumni & Student Tailgate
Homecoming Game
MTSU vs. Troy State
Floyd Stadium - 4pm
Sunday September 26th
Kicking off Homecoming
REC Center 4pm
Monday September 27th
Starflicks
KUC Lounge 10am
Tuesday September 28th
"Carnival"
KUC Knoll - All Day
Movie on the Knoll
KUC Knoll - Dusk
Thursday September 30th
Treasure Hunt
SGA Office 8am - 4pm
Wild West Chili Fest
Murphy Center - 6pm
MTSU goes to Hollywood
Pep Rally/ Fight Song
Coach McCollum & MTSU Football Team
Murphy Center - 7:30pm
Friday October 1st
NPHC Step Show
AMG - 7pm

Hi!
Watch for us!!
Special Events
KUC Theater
"NOTHING'S AS FUNNY AS 'LIFE'!"
Party Spoker, WISH - INDIANAPOLIS
"EDDIE AND MARTIN ARE THE DREAM TEAM!"
Patrick Stone, WHTY - PHILADELPHIA
"★★★★★ Eddie Murphy's masterpiece."
Mike Cidoni, WOKR - ROCHESTER
"LAUGH A LOT WITH 'LIFE'!"
It's guaranteed laughs!
Bobbie Wygant, KXAS - DALLAS
"ONE OF THE FUNNIEST MOVIES OF THE YEAR!"
Omar Lugones, WSVN - MIAMI
"TWO HOURS OF LAUGHTER!"
Bob Parker, CNN HEADLINE NEWS
EDDIE & MARTIN LIFE
IMAGINE R
www.lifemovie.com
September 20/21/22/23
Mon/Tues/Wed/Thu 7 & 9:30 pm
Admission only \$2.00
"SEX. SACRILEGE. SCATOLOGY... AN EXHILARATING EXPERIENCE!"
BY MONTY PYTHON
MONTY PYTHON'S THE MEANING OF LIFE
NOTICE THIS IS NOT THE AD FOR THE NEW MONTY PYTHON FILM
September 27/28/29/30
Mon/Tues/Wed/Thu 7 & 9:30 pm
Admission only \$2.00
September 23 and 24
Friday and Saturday
Tucker Theatre
8:00 p.m.

Shakespeare Actor Ensemble
MTSU Speech and Theatre, College of Liberal Arts, and MTSU Special Events present full-length performances of *Twelfth Night* by the Shakespeare Actor (A Center for Theatre, Education, & Research at the University of North Carolina at Chapel Hill) Ensemble. The residency will feature a five-person ensemble of professional actors from the London stage with experiences in the Royal Shakespeare Company, the Royal National Theatre of Great Britain, and the BBC Shakespeare Series. Using minimal sets, costumes, and other production properties, the actors will illustrate how the most outstanding examples of dramatic literature can entertain audiences primarily through the spoken word with the focus on characterization, gesture, stance, intonation, action, and conflict. For more information, please call 898-2640.
MTSU students FREE with valid ID.
Visit our website:
www.mtsu.edu/~specevnt
Sign-up for our list server events-l.



SPORTS

8 SIDELINES

Murfreesboro, TN

Raiders earn first I-A win in shootout MTSU defeats Wofford 52-42

Michael Edwards
Staff Reporter

MTSU totaled 602 yards against Wofford College Saturday, including 362 yards passing from Wes Counts and 186 rushing from Jamison Palmer, which propelled the Raiders to a 52-42 win.

MTSU had played two of the best defenses in America prior to Saturday's game and were prepared to take on the I-AA Wofford Terriers. In an offensive showdown, Wes Counts completed 26 of 31 passes and threw three touchdown passes.

Counts' 26 completions were one away from a school record while his 362 yards passing broke a four year old school record previously owned by Jonathan Quinn. Counts also set a record for completion percentage (minimum 30 attempts) after completing 84 percent of his passes.

Tailback Jamison Palmer helped vary the Raider offense by rushing 28 times for 186 yards and three touchdowns. Kendall Newson and Tyrone Calico owned the Terrier secondary after they totaled 162 and 131 yards receiving respectively. At the half, MTSU totaled 395 yards of total offense, and in the end, MTSU was only 58 yards off a school record for total yards in a single game.

"It seems like our offense really executed well today, but we just played two of the best defenses in America the last two weeks," McCollum said. "Defensively, we played really good for two games, but [Wofford] had a whole different scheme, and that kept us on our heels most of the game."

The Raiders couldn't seem to find an answer for the Wofford

offense, and Wofford was able to total 318 yards rushing and 518 total yards.

On the opening drive, MTSU marched down the field, but was stopped when Kelverrick Green fumbled at the Wofford 22. Tommy Woods picked up the fumble and ran it 79 yards for the game's first touchdown.

MTSU showed no ill effects as they started the next drive with a Kendall Newson catch for 13 yards. Two plays later, Newson caught another Counts pass for 12 yards. Newson caught a third pass on the drive which totaled only five yards, but with the catch, MTSU tied the game at seven.

Wofford quickly marched 65 yards on eight plays for their second touchdown of the game. MTSU came right back with Counts hooking up with Tyrone Calico for 16 yards. Jamison Palmer stole the show on this drive as he rushed four times for 50 yards including a 28-yard run setting up his six yard touchdown run.

On the ensuing kickoff, Carlos McNeil fumbled, and MTSU's Kareem Bland recovered the ball at the Wofford 20. MTSU took only five plays as Kelverrick Green punched the ball into the end zone from seven yards out.

On Wofford's next possession, MTSU stopped the Terriers after only seven plays, and Wofford punted to the MTSU one-yard line. MTSU came right back and drove 94 yards on 13 plays setting up a Keegan Ray 22-yard field goal.

MTSU and Wofford traded touchdowns until the fourth quarter when Ray missed a 44-yard field goal. The Terriers were presented with a great opportunity to take a lead. MTSU had stopped

Wofford only once all game long, and the fans had no reason to believe that they would on that drive. Would this be a replay of MTSU's game against Eastern Kentucky last year?

From their own 27, Wofford began the drive with a pass, and MTSU's Jykine Bradley came up with a huge interception with just under five minutes to play.

"I saw him scrambling, and it's like he threw the ball right at me; I just knew I had to make a big play," Bradley said.

Jamison Palmer owned the next drive carrying the ball four times for 27 yards. Palmer rushed four yards for the game securing touchdown with 3:39 left. MTSU led 52-42 at that point, and that's the way the game would end.

The offense never failed Saturday with several school records being challenged and some even broken. MTSU had the ball 13 times and scored seven of those times. Two of the other six ended

with the halves. MTSU punted only once and had only one turnover.

"Our confidence level went up," Palmer said. "After the Arizona game our offense really came together and we knew we had to put points on the board today."

"We came out to our first home game, and everybody was tired of losing," Calico said. "Everyday in practice we were preaching hard work so we could get the win."

There were many stars in the game including Counts, Palmer, Kendall Newson and Tyrone Calico. Newson became the go-to-guy Saturday, and Calico continued his steady play. Calico averaged almost 20 yards per catch.

"Wes Counts finds and throws it to us," Calico said. "It's all on him, all I do is run a route."

The defense struggled early but rose to the occasion at the end when Bradley made the interception and when they stopped the Terriers on Wofford's

final possession.

"I was worried all day long, but the pleasing thing is the second half defense stepped up and made two turnovers and a fourth down stop," Coach Andy McCollum said.

Although MTSU fought and tugged with a I-AA team, Coach McCollum is not concerned with

the type of competition.

"It doesn't matter, it's a win," McCollum said. "In this profession, a win is a win."

The win makes MTSU 1-2 on the year with some very good games coming up. Next up for the Raiders, the Southwest Louisiana Ragin' Cajuns. ■



Photo by Derrick Wilson
Kelverrick Green runs for tough yardage against Wofford

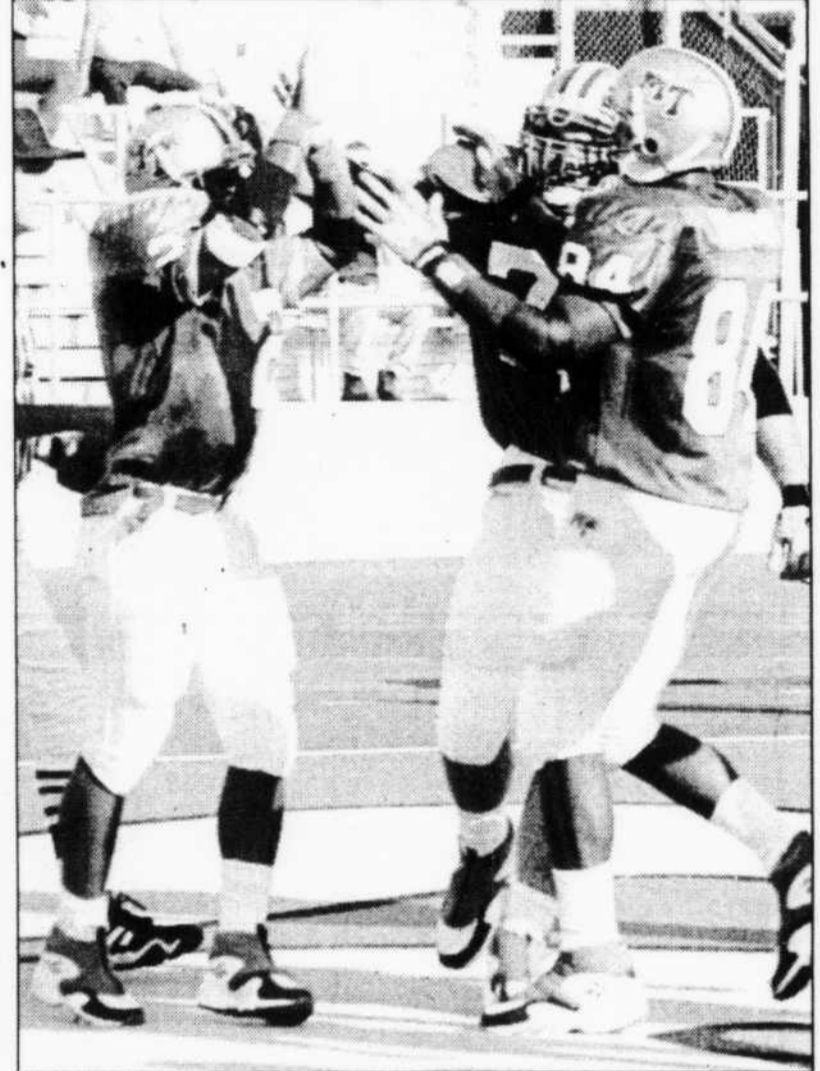


Photo by Derrick Wilson
Members of the offense celebrate after a touchdown

Volleyball team sweeps Morehead State

Robin Wallace
Staff Reporter

Gathered in a huddle, with their feet forward and their hands grasping one another's in a raised formation, the MTSU women's volleyball team made its spirit known as they shouted, "Together!"

True to their pre-game cheer, the Lady Raiders took on Morehead State University, Saturday, Sept. 18, in a remarkable show of teamwork, which lead to a three match sweep (15-8, 15-3, 15-9) Morehead at the Murphy Center.

The Lady Raiders commanded the court from the first return volley through concentration and coordination. In a commotion of cheering each other on and calling plays, the Lady Raiders produced a dance of awesome bumps, sets and spikes that left their opponents' heads spinning.

The team gave Morehead little room to score due to the Lady Raiders' skill in blocking, quick reflexes and a trained eye in calling

out-of-bound balls. While Morehead easily fell to the Lady Raiders' dynamic style of volleyball team captain Kelly Smith later remarked, "We never let up; we were aggressive the whole time."

This attitude was obvious in one volley for the Lady Raiders, which set up a powerful spike that would send Morehead sprawling onto the floor in futile attempts to dig the lightning fast spike. Yet in the next volley, the Lady Raiders would give the ball a gentle set or tap, dropping it directly on the other side of the net, catching Morehead off guard since they had been anticipating an explosive spike. The Lady Raiders' breathtaking ability of strength and aggression balanced with ease and grace created a spectacular atmosphere of excitement.

When technical difficulties with the sound and scoreboard system interrupted the second match, both teams got an unexpected chance to huddle with their coaches. Once the system was fixed, the match resumed with Morehead delivering a scoring serve. However, the Lady

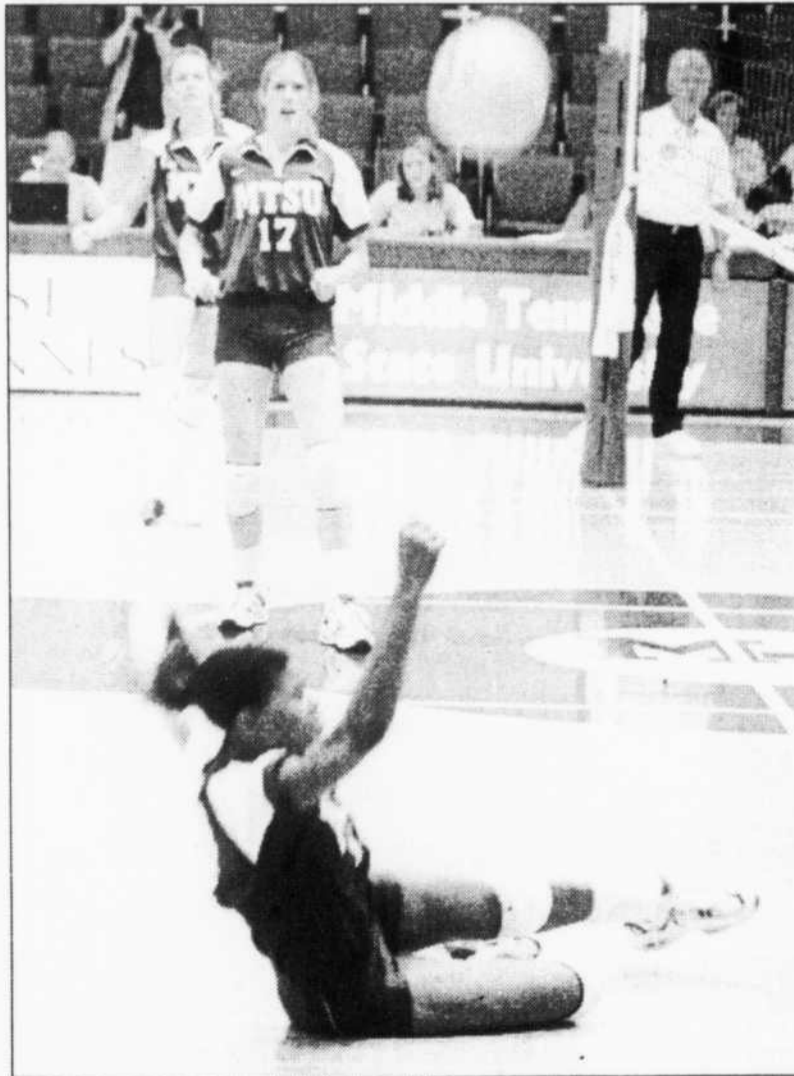


Photo by Derrick Wilson
LaTresa Cunningham dives to the floor during Saturday's contest

Raiders quickly ended Morehead's offensive scoring with a round of fast plays that kept Morehead scrambling and gave Middle Tennessee the upperhand.

The Lady Raiders dominated all three matches as a team.

"We had some really big blocks, solo and assisted, excellent defense and our serving has truly improved. Overall, we worked together as a team and had a lot of confidence, especially coming off a win last night," reflected Sonya Sanderson, an assistant coach.

The team's record is now 2-1 in the Ohio Valley Conference, and although they are young, their future is promising.

"This is the first time in being here five years that I have felt us, as a team, having depth in every area of the game," marvelled head

coach Lisa Kissele.

Amidst the incredible statistics of the Middle Tennessee- Morehead game, one athlete had an exceptional performance. Lindsay Pritchard, a Middle Tennessee junior, made 13 kills out of 18 attempts, resulting in the outstanding attack percentage of .667. Perhaps, with these types of continued figures, it will be realized how much of an amazing team the Lady Raiders are to watch. Then, hopefully a crowd will be drawn to the MTSU women's volleyball games to share and appreciate what is definitely becoming an incredible season.

Gathered in a huddle with smiles on their faces and pride in their eyes, the women's volleyball team made their victory known as they shouted, "Raiders!" ■



Photo by DerrickWilson
Abby Hartup returns the ball during Saturday's victory

Vince McMahon wins Heavyweight Title

The Hookup:
wrestling commentary



Josh Ezell
Sports Editor

What's up wrestling fans? It's time for your weekly WWF HookUp.

Smackdown began with Stone Cold talking about Triple H. He basically said he wants a rematch with the champion, and he will be in the champs cross hairs.

Triple H didn't sit in the back for very long. He addressed Stone Cold, telling him that he would not get a title shot. Instead, some wrestler Austin had previously faced would get a title shot on Smackdown. He then told Austin to kiss his ass.

Stone Cold responded by saying that Austin 3:16 would be up Triple H's ass.

The women's champ, Ivory, made her way to the ring next. She asked Cindy Margolis to come to the ring. Margolis obliged, and now probably wishes she hadn't.

After Ivory ran her mouth for a few minutes, Jeff Jarrett appeared from out of nowhere and slapped the figure four leg lock on Margolis and then on Ivory.

Later in the show, Jarrett jawed at Margolis as she was being hauled away in an ambulance. Test didn't seem to like this very much; Jarrett responded by challenging Test.

The match between Jarrett and Test ended in a no contest when the Mean Street Posse, Pat Patterson, Gerry Brisco, Shane and Stephanie

McMahon and Sean Stasiak interfered.

Jarrett's opponent at Unforgiven, Chyna, was in action against Hardcore and Crash Holly. After a few minutes of fighting by herself, she was joined by an old Degeneration X buddy— Mr. Ass.

He opened up a can of "whoop ass" on the Holly's, earning a victory Chyna and him. Afterwards, he started arguing with Chyna. At this point, Jeff Jarrett made another appearance.

In this appearance, he whacked Chyna in the head with a frying pan. While Chyna was on the ground he put an apron on her and the frying pan in her hand. He then told her to get her ass in the kitchen and cook his damn dinner.

A wrestler who doesn't have a problem with women, "Sexual Chocolate" Mark Henry, took on "The Lethal Weapon" Steve Blackman. "Sexual Chocolate" got the win after Val Venis attacked Blackman from behind with a kendo stick.

Welcome to Raw is Jericho! Jericho began his segment by telling everyone that Ken Shamrock licked the dust off his boots. Conveniently, Jericho decided that Curtis Hughes would fight Ken Shamrock with El Dapo as the referee.

Shamrock dominated the match but was disqualified because, according to El Dapo, he wouldn't break the ankle lock. At this point, Shamrock lost his temper and ripped off El Dapo's mask; Howard Finkel was exposed!

The number one contender spot for the Heavyweight Title in a five man match between The Rock, Mankind, The Big

See WWF, page 9

WWF
continued from page 8

Show, Kane and The Undertaker. The Undertaker decided to sit at the announcer's booth instead.

A few minutes into the match, The Undertaker decided he wasn't pleased with the way the match was going, so he decided to take matters into his own hands. He entered the ring, cleaned house and won the match. Afterwards, the Ministry of Darkness "laid the smack down" on The Rock.

And now for the main event. Up to this point, Triple H had not announced who he would face in the main event. Before he revealed his opponent, he asked Shane McMahon to be the referee. After Shane made it to the ring Triple H called out Vince McMahon.

Vince said no. Triple H responded by telling Vince to go back to his sexually frustrated wife. Triple H then said he could keep it up all night long.

Vince responded to this insult by hitting Triple H from behind. The champion recovered and went off on McMahon. Later in the fight, Shane tried to restrain Triple H; he got beat up for his efforts. Pat Patterson and Gerry Brisco also got beat up when they tried to help Vince.

After the madness, Vince's wife Linda came to the ring and tried to help her husband. Chyna held her back as Triple H continued to pummel Vince McMahon. Just as the champ was about to deliver a pedigree, someone came to Vince's rescue.

That someone was Stone Cold Steve Austin. Stone Cold delivered a stunner and put Vince on top of the champ. Shane made the count; Vince McMahon is the new champion. ■

September 19-25

	19-Sep	20-Sep	21-Sep	22-Sep	23-Sep	24-Sep	25-Sep
Time	Sunday	Monday	Tuesday	Wednesday	Thursday	Friday	Saturday
6:30 AM	MTSU Bulletins	MTSU Bulletins	MTSU Bulletins	MTSU Bulletins	MTSU Bulletins	MTSU Bulletins	MTSU Bulletins
7:00 AM	Mexico	Mexico	Mexico	Mexico	Mexico	Mexico	Mexico
7:30 AM	France	France	France	France	France	France	France
8:00 AM	Spain	Spain	Spain	Spain	Spain	K-12 Students	Spain
8:30 AM	Sweden	Israel	Israel	Israel	Israel	K-12 Students	Estonia
9:00 AM	Turkey	Sociological Imagination	Communicating Through Literature	Sociological Imagination	Communicating Through Literature	Israel	Poland
9:30 AM	Turkey	Sociological Imagination	Communicating Through Literature	Sociological Imagination	Communicating Through Literature	Lithuania	Poland
10:00 AM	Taiwan	Growing Old in a New Age	Living with Health	Growing Old in a New Age	Living With Health	Turkey	Taiwan
10:30 AM	Romania	Growing Old in a New Age	Living with Health	Growing Old in a New Age	Living With Health	Dubai, UAE	Romania
11:00 AM	South Africa	Japan	Japan	Japan	Japan	Japan	Czech
11:30 AM	South Africa	Basque	Basque	Basque	Basque	Basque	Dubai
12:00 PM	Dubai	SCOLA Schedule	SCOLA Schedule	SCOLA Schedule	SCOLA Schedule	SCOLA Schedule	SCOLA Schedule
12:30 PM	MTSU Bulletins	MTSU Bulletins	MTSU Bulletins	MTSU Bulletins	MTSU Bulletins	MTSU Bulletins	MTSU Bulletins
1:00 PM	China	Russia	Russia	Russia	Russia	Russia	China
1:30 PM	China	Sweden	Estonia	Sweden	Estonia	Sweden	China
2:00 PM	Germany	Germany	Germany	Germany	Germany	Germany	Germany
2:30 PM	Germany	Germany	Germany	Germany	Germany	Germany	Lithuania
3:00 PM	Israel	Portrait of a Family	Literary Visions	Portrait of a Family	Literary Visions	Latvia	Galicia
3:30 PM	Armenia	Portrait of a Family	Literary Visions	Portrait of a Family	Literary Visions	Argentina	China
4:00 PM	Basque	K-12 Teachers	Nutrition Pathways	K-12 Teachers	Nutrition Pathways	K-12 Teachers	China
4:30 PM	Poland	K-12 Teachers	Argentina	K-12 Teachers	Argentina	K-12 Teachers	Hungary
5:00 PM	MTSU Bulletins	MTSU Bulletins	MTSU Bulletins	MTSU Bulletins	MTSU Bulletins	MTSU Bulletins	MTSU Bulletins
5:30 PM	Inside Academia	Recollections	MTScene	Recollections	MTScene	Recollections	Iceland
6:00 PM	France	Recollections	Andy McCollum Show	Recollections	Andy McCollum Show	Recollections	Iceland
6:30 PM	Italy	Quebec	Quebec	Quebec	Quebec	Quebec	Catalunya
7:00 PM	Croatia	Sociological Imagination	Communicating Through Literature	Sociological Imagination	Communicating Through Literature	NASA	Croatia
7:30 PM	Croatia	Sociological Imagination	Communicating Through Literature	Sociological Imagination	Communicating Through Literature	NASA	Croatia
8:00 PM	Hungary	Growing Old in a New Age	Living with Health	Growing Old in a New Age	Living With Health	NASA	Italy
8:30 PM	Hungary	Growing Old in a New Age	Living with Health	Growing Old in a New Age	Living With Health	NASA	France
9:00 PM	Iceland	Portrait of a Family	Literary Visions	Portrait of a Family	Literary Visions	NASA	Quebec
9:30 PM	Finland	Portrait of a Family	Literary Visions	Portrait of a Family	Literary Visions	NASA	Basque
10:00 PM	Korea	Andy McCollum Show	Nutrition Pathways	Andy McCollum Show	Nutrition Pathways	Korea	
10:30 PM	Quebec	Inside Academia	Greece	Inside Academia	Greece	Inside Academia	Jordan
11:00 PM	Greece	France	France	France	France	France	Greece
11:30 PM	Greece	Italy	Italy	Italy	Italy	Italy	Greece

Classifieds

Notice

Sidelines recommends that you use discretion before sending money for any advertised goods and services. We recommend that you get in writing a full description prior to sending money.

Employment

CAST AND CREW NEEDED! MTTV producer seeks talented cast and crew for upcoming television show. For schedules, info and audition information, contact: Justin Moores @ 898-3810 or jorson2@gmail.net.

Need a job on campus? Great company looking for great employees to work with special adult students. Better than competitive pay. Flexible hours. Great job satisfaction. Call Lucy for more details 848-0114

WANTED: Handyman for minor repairs, painting, cleaning, typical make-ready for rental houses. Hours very flexible. Pay \$10/hour. Call Matt Ward 849-2223 ext. 288

SPRING BREAK 2000 with STS - Join America's #1 Student Tour Operator to Jamaica, Mexico, Bahamas, Cruises, and Florida. Now hiring on-campus reps. Call 1-800-648-4849 or visit online @ www.ststravel.com.

Telemarketing position, full or part-time, local const software distributor. Call 252-6100 Ask for Rick or Mert

Management Recruiters International, World's largest professional search firm, hiring project staff. Telephone-intensive, demanding, challenging work for aspiring executives, 10-20 hrs/wk. Flexible schedule and training provided. \$8.50/hr + bonus. Apply @ http://www.mrisearch.com

Manage A Business On Your Campus Varsity.com an Internet note taking company is looking for an entrepreneurial student to run our business on your campus. Manage students, make tons of money, excellent opportunity! Apply online at www.varsity.com, contact Jobs@varsity.com or call (734) 483-1600 ext. 888.

Wanted: Child care for 7 year old girl. M-W-TH 3:30-5:30 near MTSU. Must have transportation. Experience and references required. 896-2157, 347-3595.

WANTED: Cheerleading, Tumbling, Dance, and Baton teachers. Good Pay. Must have transportation. 896-4683, 347-3595.

* Study, Work and Play on Campus * Like being Outside? Want to Get in Shape? Grounds Department is **HIRING NOW.** Part-time work. We'll work around your schedule. Experience is

desired, but not necessary. Be ready for a work-out! Activities include: Watering, weeding by hand, weedeating- trees and shrubs, litter removal. Excellent Hourly Pay! Call James @ 5968 or Patty @ 8029 to apply (if we're out, leave a message) **APPLY NOW!**

Need credit hours? Student Photographer wanted to shoot pictures at a special event. For more information please call 736-1402.

Telemarketer for video company. \$7-15 hr. Homebased, Call Dennis @ 367-0388.

JDs Sports Grille, new restaurant in Smyrna, located on Enon Springs Road near Nissan Blvd. Opening September 1999 Accepting applications now for waitress and cook assistants. Pick up Job Applications at the MTSU Student Placement Office.

For Sale

311 Tickets for tonight's sold out show at 328 Performance Hall. \$50 for 2 tickets, cash only. 849-7938

Yamaha Razz Moped. Not used since 1992- only 248 miles. \$475. 895-4599

Peach Queen Anne sofa and ottoman- like new, \$150. Call 907-5725

Roommate

Need a roommate? Students with non-commercial interest may place ads at no charge in the Sidelines Classifieds. Come by our Student Publications office in the JUB room 306.

Roommate needed to share two bedroom apartment. Less than one mile from campus. \$275 a month includes rent and utilities. Call 848-5665

Roommate Wanted to share a beautifully furnished two bedroom, two bath condominium at Sanbyrn Hall, located approximately one mile from MTSU. Available immediately. Teacher/graduate student looking for non-smoker (unless willing to smoke outside on patio!) No pets, please. If interested, call 893-9407 and leave a message. Rent: \$300 monthly plus one-half utilities.

Grad student and senior seek artistic roommate. Private bathroom, washer & dryer. Furnished! Cable, electric, water, and telephone included- \$395/mo. We bike to campus. Call for eclectic living 907-4214.

Female roommate wanted to share 3 bed 2 bath apartment with 2 other females. \$228/mo + 1/3 utilities. Non-smoker preferred. Across from Murphy Center. Please call 896-5816 or 893-7832.

Travel

Spring Break 2000!! Panama City, Daytona, Key West, South Beach, South Padre. Prices from \$129/week. \$25 Deposit Reserves Your Spot NOW!! Group organizers travel FREE!! Call 800-799-8445 or www.usaspringbreak.com.

Services

Piano Lessons in Your Home! THE Piano Teacher who comes to you is now auditioning beginner and early level students for fall. Call for more information 217-1062.

Earn \$\$\$ while losing weight. 24 people needed. We'll pay you \$ to lose 10 to 29 lbs./30 days. 100% natural, 100% guaranteed. Call: 615-895-1767 www.lbsoff.com ID#2299

Need Credit Hours? Student photographer wanted to shoot pictures at a special event. For more information please call 736-1402.

Cash Fast, loans or buying valuables, musical items, gold jewelry, collectibles. Call Now! Gold-N-Pawn 1803 N.W. Broad Street Murfreesboro 896-7167

MASSAGE THERAPY for stress or chronic pain. Deep tissue and relaxation techniques. Ten years of experience. 10% discount for students. Call 331-3093 for appointment.

FREE INFORMATION is available through the MTSU Placement Office, KUC Room 328. Come by and receive your complimentary copies of catalogs, pamphlets, and guides to learn how to write a resume and cover letter from various samples, gather information about a particular company, and help with interview preparation. Video tapes are also available for you to view in the Career Library.

The Placement Center is using a computerized registration system and resume preparation program called **RESUME EXPERT**. The benefits include:
* professional, typeset quality resume which can be easily updated
* user-friendly
* IBM compatible. The computer labs on campus can be used.

After purchasing your software in Phillips Bookstore, it must be brought to the Placement Center to load your information in the database for resume referrals to employer. Once registered via **RESUME EXPERT**, the Placement Center is able to track which companies individual resumes are referred and inform the individual upon request.

Pharmaceutical and Biotechnology Industry Guides Second Edition. Institute for Biotechnology Information. Guides to access Drug Companies, Bio-Tech Firms and more. Come visit the Placement Center to look at this publication.

Jolt N' Bolt
Java Junkies
Drive-thru
Espresso Drinks

Café Lattes - Cappuccino
Café Mochas-Gourmet Coffees
Smoothies-Iced Coffees

Need a quick buzz?
Short on time?
We'll have you in
and out in minutes

Open 6am Mon-Fri

JavaRose

M'boro Rd in Smyrna across from the
K-Mart Shopping Center
220-6000

javarose@msn.com

show your student I.D. and receive
.50 off any Mega drink



CAREER PLACEMENT ORIENTATION RESUME WRITING AND INTERVIEW PREPARATION

Tuesday, September 21, 11:00 a.m.
Wednesday, September 22, 2:00 p.m.
Thursday, September 23, 2:00 p.m.

KUC 314

Presented by the MTSU Placement Center
KUC 328, 898-2500

PREMIER STUDENT HOUSING



Study Hard.
Live Easy!

2 AND 4 BEDROOM APARTMENTS

One EASY monthly payment includes EVERYTHING!

- Electric Utilities Paid
- Basic Cable Paid
- Basic Phone Paid!
- Fully Furnished Apartments
- Intrusion Alarm
- Full Sized Washer & Dryer
- Private Baths Available
- Computer Lab
- Fitness Center
- Resort Style Pool/Jacuzzi
- Roomate Matching System
- Individual Leases

UNIVERSITY COURTYARD APARTMENTS
CALL (615) 907-0600 TODAY!
(615) 907-0665 (fax)
1540 New Lascassas Highway • Murfreesboro, TN 37130

Got a news tip? Call Sidelines at 898-2336

Nottingham Apartments

1311 Greenland Drive
893-1733

1,2 & 3 Bedrooms*

- conveniently located across from Murphy Center

* bring in ad for special savings

Campus Villa Apartments

Newly Renovated
2 Bedrooms
Convenient to MTSU
893-1500

- swimming pool
- volleyball court
- basketball court
- courtyard study area
- all new carpet & appliances
- computer port in apts.
- media center
- water furnished

902 Greenland Drive

Bring in this ad to save \$100 off

UNIVERSITY
COURTYARD
APARTMENTS



Do We Have Your Number?

We'd like to be sure we have your correct telephone number for the 1999-2000 MTSU telephone directory which will be on campus in October.

If you're a full-time student (an undergraduate taking 12 hours or more or a graduate student taking 9 hours or more), you will be listed in this directory. A campus phone number will be given for residential students, the local number for others. If you provided some other number when you applied for admission (like your parents or where you lived two years ago), you can correct that number as well as your address by going to the Records Office, Cope Administration Building 106, by Wednesday, September 22, 1999.

If you do NOT wish to be listed in such a directory, you must notify the Records Office in writing no later than Wednesday, September 22, 1999. The easiest way is to go by Cope 106.

Faculty and staff numbers also will be listed in the telephone directory along with University offices and a guide to services.

Visit the NEW CYBER CAFE

@ Woodmore



Experience
the New Way
to Dine
Surrounded
by T.V.'s &
Computers!



Hours of Operation

Monday thru Friday
10:30 a.m.-10:00 p.m.
Sunday
2 p.m.-8 p.m.

A1

EXTRA! EXTRA!

Student Loan Savings

Big Savings For Borrowers!
Educational Funding of the South/**edsouth**, has announced an update to their popular Trim Fees Program. Now **edsouth** offers a 1% lower origination fee on ALL Stafford loans.* **edsouth**, who for years has been paying the guarantee fee, will deduct one percent of the origination fee from all Subsidized and Unsubsidized Stafford Loans. That means ALL students at ALL schools receive discounts on ALL Stafford loans. More guaranty agencies now offer zero guarantee fees, and **edsouth** saw the opportunity to provide



an unprecedented 2% savings for borrowers.** Now students and parents who borrow with **edsouth** can save 50% on all loan fees, giving them a larger loan check and more money up front for books and supplies.

*Effective for Stafford loans disbursed after July 1, 1999
**2% savings effective for all Stafford loans guaranteed by participating guarantors only

edsouth

123 Center Park Drive • Knoxville, TN 37922
1-800-edsouth • www.edsouth.org