

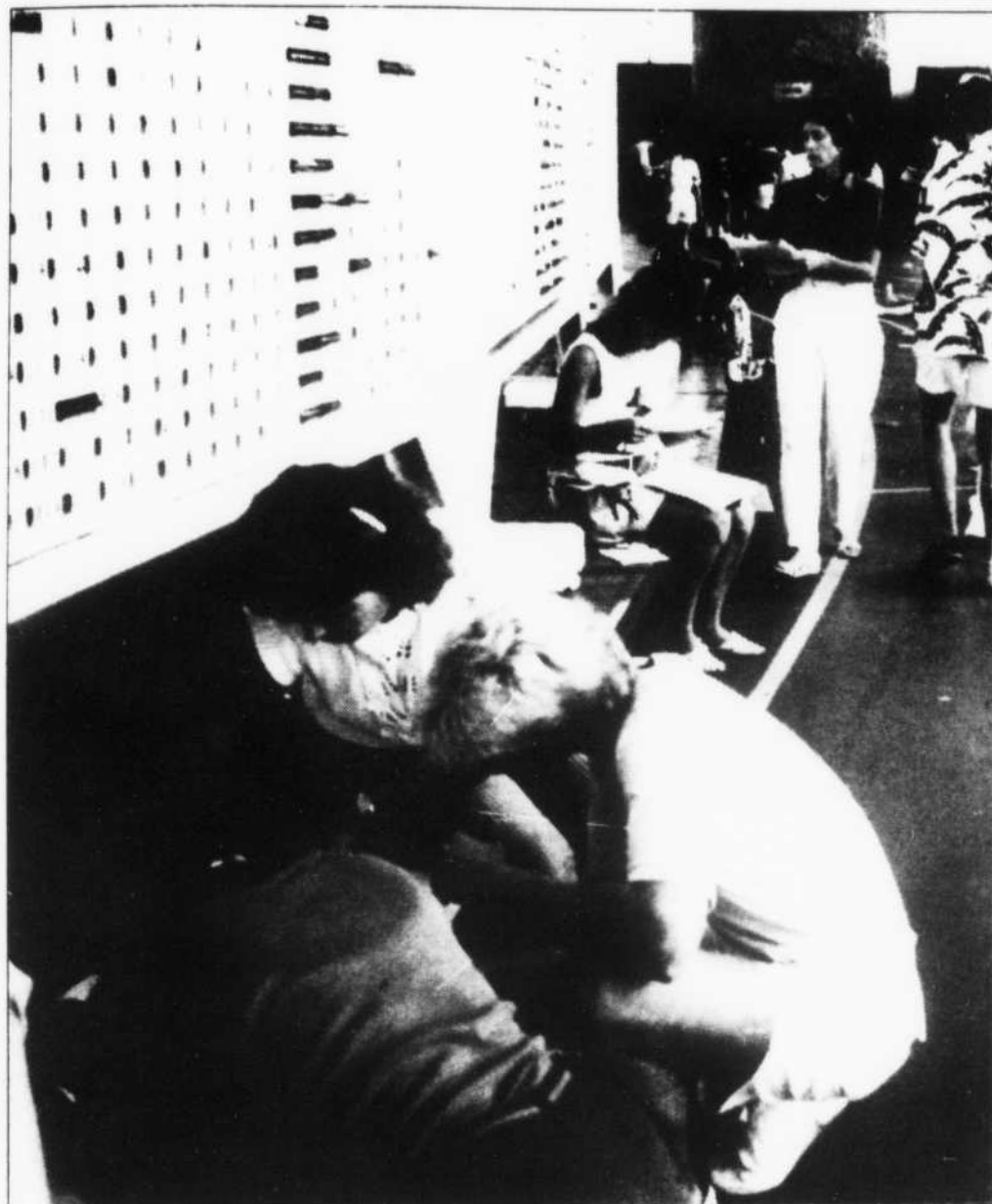
# Sidelines

## Back-to-School Issue

Volume 62, Number 9

Murfreesboro, Tennessee

Wednesday, August 19, 1987



Frank Conley/Staff

From start to finish MTSU students anticipate the beginning of their college careers, as well as graduation day. In the photo (left) students check to see if their classes are still available at the card bank in registration. Cheri Gregory and Linda Durham (in the right photo) give their graduation robes one last check before the commencement ceremonies for approximately 650 graduates began August 8 in Murphy Center.

### Inside...

#### News

Associated Student Body

page 2

MTSU history

page 6

#### Entertainment

Starwood Amphitheatre

page 13

Videos and pizza places

page 16

#### Sports

Alumni Gym

page 21

### Freshman applications up 12.88%

By MONA VINSON  
News Editor

MTSU freshman applications for the 1987 fall semester are 12.88 percent above the 1986 fall semester figures, according to the latest Application Activity Report released August 5.

The report also shows re-admissions are up 5.77 percent over last year's count. Undergraduate applications total are up 8 percent.

"I think MTSU is a great institution of higher learning," Ivan Shewmake, director of housing, said. "Recruiting is good. We (MTSU) are relatively inexpensive, have a great location, great faculty and the curriculum is what the students want."

Although undergraduate applications are up 8 percent, Shewmake said he does not expect an overflow situation in the dorms this fall.

Please see "Freshmen," page 2

# Associated Student Body serves as voice of students

From Staff Reports

Newly elected Holly Lentz will serve as the 49 president of the Associated Student Body government at MTSU.

Lentz won in a run-off election against Doug Roth last spring on March 11. There were 1,080 votes cast in the election. Lentz received 53 percent while Roth received 47 percent.

The ASB was established in 1938 and has been a traditional part of MTSU ever since.

Oct. 19, 1938 *Sidelines* reported that, "Two-hundred and forty two students voted in favor of a form of self government and designated Charlie Miller, president of the student body, to appoint a committee of students to draw up a constitution on the order of student government."

These were the beginnings of the MTSU Associated Student

Body, the organization that has served as the voice of students for almost fifty years.

"This meeting was called to-night to determine whether or not the student body is interested in student government. I believe that your presence shows that you are favorable to such a movement," Miller said.

"If any obstacles are encountered in this last mile of the way toward organization of the Associated Student Body, they should be removed...There should be no further quibbling and even less delay. The students are ready," an editorial in *Sidelines*, Dec. 7, 1938, stated.

In a student body meeting held Jan. 11, 1939, the constitution was read and approved. The first ASB officers were elected

Please see "ASB," page 4



Tim Cope•Staff

Holly Lentz was elected ASB president in a run-off election last spring against Doug Roth. An ASB retreat will be held this Aug. 29 and 30 at Tech Aqua Resort on Center Hill Lake to educate the students leaders about their offices.

## Freshmen

Continued from page 1

"Ours is a finite system," Shewmake said. "We can only

take up to the number of beds we have.

"Ideally, there is one resident for every bed," he continued.

"There will be some three to a room though.

"Up until mid-term there can be overflow," Shewmake said. "After mid-term there will be a reduction in rates if there are more than two to a room."

Although there was a 7.5 per-

cent increase in housing fees last year, housing will only have a 1.5 percent increase this fall, with the exception of J and K apartments. They will have a 1 percent increase.

The date for Family Day has also been confirmed on the Application Activity Report. Activities will be held on Saturday, Oct. 17, 1987.

# You're Five Minutes From A Student Loan

## Or Checking Account, 24-Hour Banker, Drive-Up Teller...

Mid-South Bank believes that MTSU students shouldn't have to go out of their way to get the banking services they need. Our University Office is right across the street from campus on Greenland Drive, offering you a convenient place to bank and the kind of personal service you won't find anywhere else.

So if you're interested in a student loan, an easy to manage checking account like Harvey Chek24, 24-hour banking with Harvey II, or any of our other convenient services, stop by. We'd like to show you that students are special at Mid-South Bank and Trust.



**Mid-South Bank & Trust Co.**

Member FDIC

A SunTrust Bank

**Greenland Drive**

An Equal Opportunity Lender



## Beers

### — Imported —

AUSTRALIA  
Fosters  
Fosters Oil Can  
CANADA  
Grizzly  
Labatts  
Labatts Ale  
Molson Golden  
Molson Export Ale  
Superior  
CHINA  
Tsingtao  
CZECHOSLOVAKIA  
Pilsner Urquell  
DENMARK  
Carlsberg

ENGLAND  
Bass  
Whitbread  
FRANCE  
Kronenbourg  
Kronenbourg Dark  
GERMANY  
Becks  
Becks Dark  
Furstenburg  
Hacker-Pacherr  
Hacker-Pacherr Dark  
Henninger  
Henninger Dark  
Hurlimann

Paulaner  
St Pauli Girl  
St Pauli Girl Dark  
Wurzbürger  
HOLLAND  
Amstel Lite  
Grolsch  
Grolsch 16 oz.  
Heineken  
Heineken Dark  
IRELAND  
George Killian  
Guinness  
Harp  
ITALY

Raffo  
JAPAN  
Kirin  
Sapporo Draft  
MEXICO  
Carta Blanca  
Dos Equis Amber  
Dos Equis Special  
Negra Modelo  
Tecale  
NEW GUINEA  
South Pacific  
NEW ZEALAND  
Steinlager  
Steinlager 24 oz.

### — Domestic —

Blatz  
Black Label  
Black Label Lite  
Bud  
Bud Lite  
Busch  
Colt 45  
Coors  
Coors Lite  
Country Club  
Dixie  
Dixie Lite  
Erlanger  
Falls City

Falls City Lite  
Falstaff  
Iron City  
L.C. Golden Lager  
L.C. Lite  
L.A.  
Lacroix  
Lowenbrau  
Lowenbrau Dark  
Magnum  
Malt duck  
Meisterbrau  
Michelob  
Michelob Dark

Michelob Lite  
Mickey  
Miller  
Miller Genuine Draft  
Miller Lite  
Mustang Malt Liquor  
Natural Lite  
Old English  
Old Milwaukee  
Old Milwaukee Best  
Old Milwaukee 1851  
Old Milwaukee Lite  
Old Style  
Old Style Lite

Pabst  
Pabst Lite  
Rolling Rock  
Red White -N- Blue  
Schaeffer  
Schaeffer Lite  
Schlitz  
Special Export  
Stag  
Sterling  
Strohs  
Strohs Lite  
Stroh Signature  
Wiedemann

### — Draft —

Straight Out Of The Keg!  
**PREMIUM — POPULAR — LITE**

## Great Sandwiches

All of our sandwiches are served hot with a quarter pound of meat on our 7 1/2 inch homemade bun. Create your own masterful sandwich using the many condiments and cheeses that we have available.

**Hoagie**  
(Ham, Salami, Swiss Cheese)  
One of our most popular sandwiches, great cure for a big hunger.

**Reuben**  
(Corn Beef, Swiss, Kraut)  
We don't need a world renowned chef to understand how good this is.

**Turkey**  
A consistently great tasting sandwich. Who says turkey is only for holidays?

**Roast Beef**  
A super hearty portion of select beef cut razor thin and cooked medium.

**Pastrami**  
Thinly sliced strips of aged and seasoned corn beef great with hot pepper cheese

**Pepper Beef**  
Hot enough to almost rip your tongue off. Should be served with a caution label.

**Chili Dog**  
Great piled high with onions or even without! Guaranteed indigestion — but worth it.

**Cheese**  
Choose 3 of our many cheeses or 3 portions of the same cheese. A "veggy's" delight!

**Ham**  
There's not a kid or adult alive who wouldn't want to sink their teeth into this delicious selection.

**Chicken Salad**  
Almonds, celery and other secret ingredients compose this possible award winning combination

**Tuna Salad**  
As good as mom makes, except a bunch of it on a homemade freshly steamed bun.

**Salami**  
Cotta salami stacked high, great with mozzarella.

**Hot Dog**  
1/4 lb. all beef weiner. Also available as a cheese or kraut dog.

**Corned Beef**  
"Lean and Mean!" great with any cheese. Always a deli speciality.

— Half Sandwiches Are Available —

**1/2 Price Beer**  
**4 to 6 PM Weekdays!**  
with purchase (DRAFT BEER)

### Nachos

**Regular**  
Fresh nacho chips, piled high, smothered with chili, melted cheeses & jalapenos.

**Supreme**  
One of our newest rages! Regular nachos plus lettuce, tomatoes, olives, sour cream and guacamole.

### Platters

#### Chicken or Tuna

A fresh bed of leaf lettuce, a fluffy pillow of sprouts. On top is a quarter pound mound of homemade chicken or tuna salad. Also with cottage cheese, pickle spear and crackers.

### Taco Salad

Our zesty taco salad will give you a feeling of Mexico! Lettuce, chips, chili, cheese and jalapenos topped with sour cream. A most popular new addition to our menu.



## ASB

Continued from page 2

on Feb. 8, 1939. Charlie Miller was elected president; vice president, Kathy Meadows; secretary, Bruce Sartor; and treasurer, Francis Brown.

The first business of the newly elected ASB was to measure and coordinate all campus organizations by filing a list of officers with the ASB secretary, *The First Fifty Years*, a history of MTSU, states.

"The purpose of the Associate Student Body...is to provide the means whereby student opinion may be introduced in the governance of the institution...to work with the administration in all matters affecting the welfare of the student body, and to promote the best possible understanding between faculty, administration, and students," is how the ASB Constitution de-

fines the organization's purpose. While the ASB has always acted as a channel of communication between the students and the administration, it has also served students in other ways.

Today, the ASB serves primarily as a legislative body, actively participating in the day-to-day decision-making process at MTSU. While the ASB has no enforcing powers, it suggests changes and communicates the needs of the students to the administration.

The ASB sends delegates to the Tennessee Intercollegiate State Legislature, a yearly gathering of the brightest minds in student government. ASB Student Ambassadors help guide new students, conduct campus tours and perform various other duties.

In addition to these activities, the ASB attends a retreat at the

beginning of each fall semester.

"The retreat is for ASB elected officials, cabinet members, judicial members, all university committee members, homecoming committee, and selected members of administration," Rob Marlin, organizer of the retreat, homecoming director and advisor to the president, said. "This year we also extended an invitation to the presidents of all organizations on campus to get the President's Club started."

Marlin, who is expecting a minimum of 75 to attend the retreat, said the purpose is to educate the student leaders for their offices.

"The ASB championship fishing team, headed by Holly Lentz, will take on the MTSU administration champion fishing team, headed Dean Paul Cantrell, at the retreat for the annual ASB versus administration fishing championship," Marlin added.

## Financial aid available

From Consumer Information

The strains of "Pomp and Circumstance" played by the high school band have faded — on to college or technical school.

Students should consider looking at federal student aid for continuing an education after high school. Information about financial aid can be found in *The Student Guide — Five Federal Financial Aid Programs* (Item 503R) a free booklet from the U.S. Department of Education.

Many undergraduates get help in paying their tuition bills for college or technical school from grants. The federal government awards Pell Grants and Supplemental Educational Opportunity Grants (SEOG's) on the basis of need. A Pell Grant can be as much as \$2,100, SEOG's for up to \$4,000 a year, and neither have to be paid back. Applications for a Pell Grant

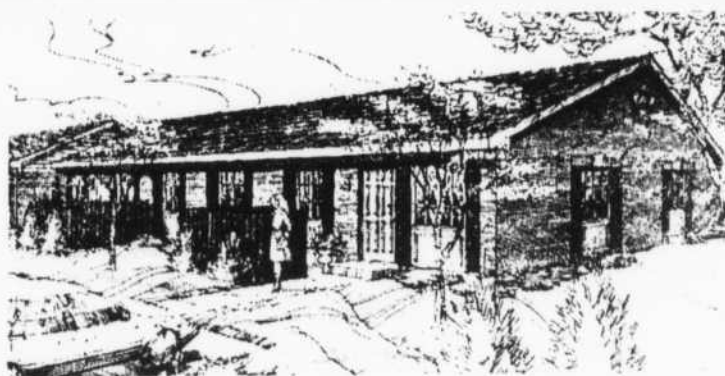
should be submitted early for the next school year, although the absolute deadline is usually the beginning of May at the end of the school year — May 2, 1988 for the 1987-88 school year. Deadlines for the SEOG's vary, so check with the financial aid administrator.

Money for school can also be obtained by qualifying for a College Work-Study program. In this program, available to undergraduates and graduate students, a part time job is established and pay is at least minimum wage by the hour. The school sets the work schedule. Most students do College Work-Study in combination with the grants, or other assistance. Applications are usually early in the calendar year.

Loans are also available to help pay for an education.

**Applications are being accepted for  
staff writers and copy editors at  
Sidelines NOW.**

**Come by Room 310 of the JUB to apply**



That's right! We want you to start living at Stones River Apartments, where you can unwind in the countryside next to the lazy Stones River. One of Murfreesboro's newest apartment communities, you'll find our 1 and 2 bedroom apartments roomy, very comfortable and definitely convenient. (We're only 5 minutes from campus.) Our 2 bedroom, 2 bath apartment is perfect for roommates! And every apartment home at Stones River is designed for privacy, each with its own private entrance and patio. Plus the

single-story design is ideal if you prefer not having neighbors above or below. Stones River is affordable! Especially when you consider all the freebies:

- Microwave ovens
- Dishwasher
- Washer/Dryer connections
- Cathedral ceilings and ceiling fans
- Swimming pool
- Plenty of attic storage space
- Spacious bedrooms and living area
- Built-in bookcases
- Ground floor entrance

*Priority Reservations For Phase  
Two Are Now Being Accepted  
For Fall Occupancy.  
Hurry, Filling Fast!*

Call 896-6424 today or visit Stones River at 205 Warrior Drive, just 1/2 mile south on I-24 and Church Street, at the corner of Warrior Drive in Murfreesboro



**Patty's Hallmark**  
1668 Memorial Blvd.  
(Behind Rax)

*Greeting Cards, Shoe  
Box Cards, Blue Mountain  
Art Cards, Posters,  
Calendars, Mugs, Party  
Goods, Plush Animals,  
Puzzles  
and Gifts For All Occasions*

**Present This Coupon For  
15% Off  
Everything  
With Valid Student ID**

*Offer Expires Sept. 19, 1987*

**Patty's Hallmark**  
(Behind Rax)



# DANCERS

RESTAURANT & LOUNGE

*★ ★ Largest Dance Floor In Town ★ ★*

\*\*\*\*\*

COME CHECK IT OUT-PARTY WITH US

TILL 3 AM

Open 7 Days A Week

\*\*\*\*\*

Attitude Adjustment Hour 4-7 pm. Mon-Fri.

• *Special Drink Prices*

• *Free Horsd'oeuvres*

- Monday- Attitude Adjustment Night (Special Prices All Night)
- Tuesday- Comedy Night
- Wednesday- Rock Night
- Thursday- Skirt Night (Ladies Night-Free Roses To All The Ladies)
- Friday & Saturday- Dance Contest (Weekly Cash Prizes--Grand Prize A Dream Vacation)
- Sunday- Gong Show

*Available for fraternity, sorority parties, wedding receptions, birthday parties and private parties.*

For More Information Call  
898-0808

2111 E. Main St. Across From Pizza Hut

# MTSU weathers more than 75 years in higher education

By LISA FLOWERS and  
CHRIS BELL  
Former Editors

Through two World Wars, four name changes, six university presidents, the stock market

crash and the turbulent 60s, Middle Tennessee State University has developed into one of the largest and most diverse institutions of higher learning in Tennessee.

In 1909, the Tennessee State Board of Education made provisions for the construction of three Normal (teacher) schools. On Nov. 30, 1909, the state legislature chose Murfreesboro

as the site for these teaching facilities.

Construction for the facility, consisting of four buildings, was completed by 1911. Robert Lee Jones, the state superintendent of instruction, was appointed

president of Middle Tennessee Normal School by the State Board of Education.

On Sept. 11, 1911, the school was dedicated and classes met for the first time. There were

*Please see "MTSU" page 7*



Tim Cope • Staff

Current university President Sam Ingram took office January 1, 1979 after M.G. Scarlett resigned in 1978. Ingram serves as our sixth university president.

**\$2.00** RETURN **\$2.00**  
THIS COUPON

AND GET TWO DOLLARS OFF!

ANY OF YOUR FAVORITE  
CASSETTE, LP, OR  
COMPACT DISC!

*Sale items excluded*

*ask about our one year tape guarantee*

## SOUND SHOP

Jackson Heights 890-1860

Expires 9/30/87



## UNIVERSITY PARK APARTMENTS

902 Greenland Drive  
893-1500

ALL COLLEGE  
STUDENT COMPLEX

2 Bedrooms  
Unfurnished

2 1/2 Blocks From  
Campus

\$290 Per Month  
With \$100 Security  
Deposit or  
\$1100 For Semester

Includes:

- Basic Cable
- With HBO
- Pool
- Laundry Room
- Basketball Court

# MTSU

Continued from page 6

120 males and 127 females enrolled for the fall semester of 1911. The primary objective of the Normal was to prepare students for the teaching profession.

During the early Normal years organizations began appearing on campus. The first student activities centered around the literary societies, which were formed in 1911. Also during this era athletic teams began to emerge, with baseball, basketball and football teams organizing by 1913. The school's growth was hindered by the outbreak of World War I. Male enrollment fell from a high of 244 in 1916 to 63 by 1919. Jones resigned as president of the school in 1918, amidst political maneuvering. Alfred Pritchett Lyon was first named interim president and became president on Nov. 13, 1922.

In 1925, both the name and the status of the school were changed. The new school was renamed Middle Tennessee State Teachers College and offered a

Bachelor of Science Degree.

In August of 1938, Quintin Miller Smith, the former president of Tennessee Polytechnic Institute (now Tennessee Technological University) and a MTN graduate, was chosen as the new MTSTC president after President Lyon resigned.

Efforts also began at this time to move the school to full college status, but the decimating effects of World War II would delay that goal for several years.

Enrollment fell to an all-time low during the war years. Male enrollment dropped from 342 in 1938 to 20 in 1944, and total enrollment was only 200 in 1944. If not for the use of the campus for the training of military personnel, the college would have appeared barren.

Seven hundred and seventy-two MTSU students and alumni served in World War II. Thirty-seven of these soldiers had given their lives by the end of the war.

In 1943, the state legislature changed the college name to Middle Tennessee State College.

After the war and with the implementation of the G.I. Bill, en-

rollment at MTSC reached record proportions. To keep up with this increase, President Smith proposed a massive building program. The James Union Building, Smith Hall, the Memorial Health and Physical Education Building and Monahan Hall were all results of this flurry of construction.

President Smith resigned in 1958 after reaching the age of 67, the mandatory retirement age for Tennessee college presidents. Dr. Quill Cope was elected the new president in February, 1958.

Cope's administration witnessed the biggest single change in the school's history. On February 16, MTSC became Middle Tennessee State University when the state legislature approved the elevation of the school to university status. While no structural changes accompanied the name change, the new name "will greatly strengthen the position of the institution in its growth and development," President Cope said at the time.

The 60s also witnessed

further construction with work on the Keathley University Center, new agricultural building, High Rise dorm and other buildings.

Cope resigned in 1968 and in September of that year M.G. Scarlett became the fifth president of the institution. Scarlett's

10-year term of office was marked by an almost 100 percent increase in enrollment and the most severe social and political disturbances of the 60s.

Current university President Sam Ingram took office January 1, 1979 after Scarlett resigned in 1978.

SIDELINES Wednesday, August 19, 1987 • 7

**Cinema Twin Theaters**  
**WELCOMES MTSU STUDENTS**  
Monday Bargain Night Tickets \$2.25  
Only One In Town  
Sat. & Sun. 4 p.m. Matinee \$2.25

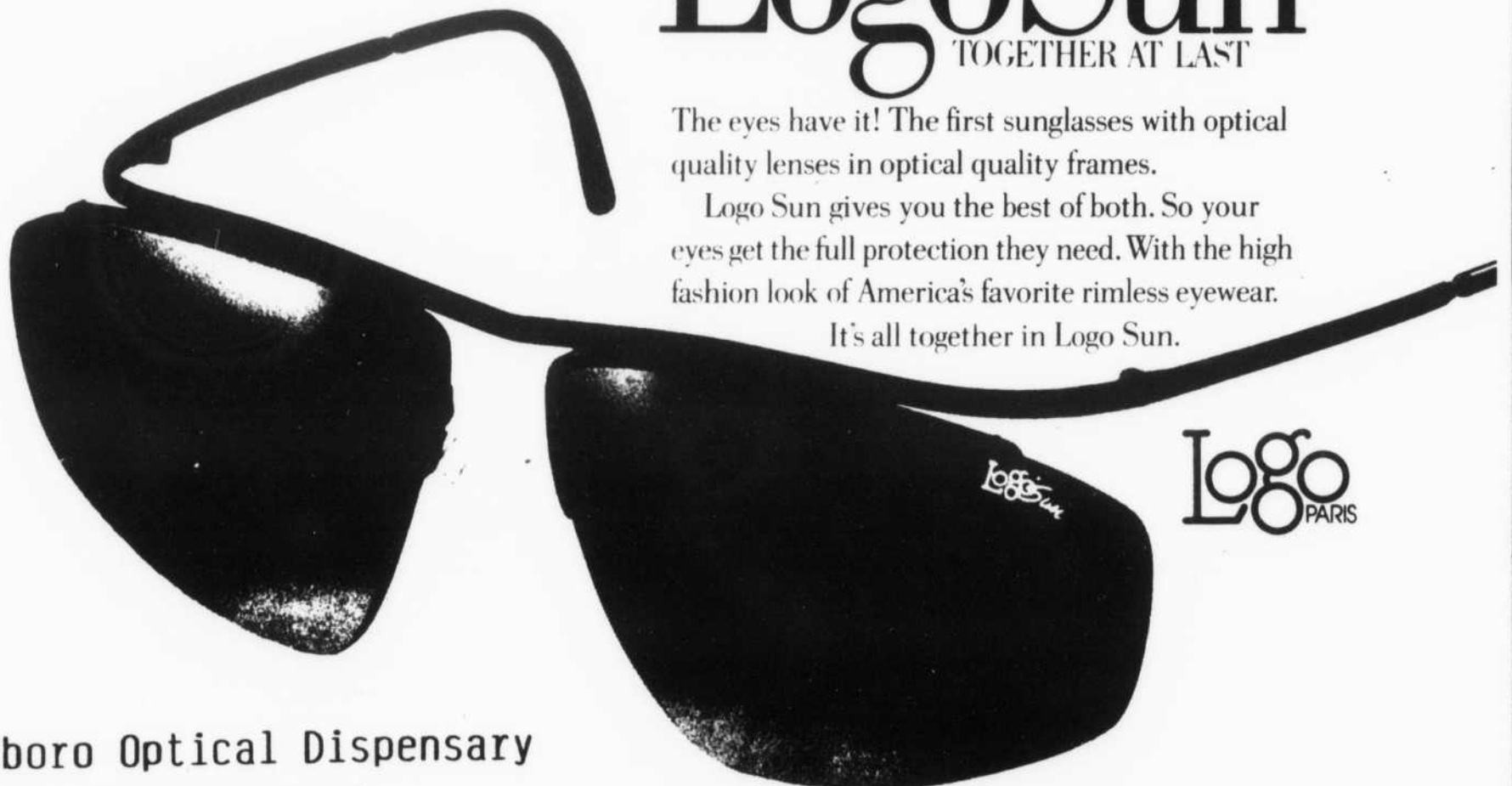
**1 Free Admission With  
Purchase Of One Adult Ticket  
At Regular Price**

For MTSU Students With Valid ID  
Offer Good Sept.-Dec. 1987  
Coupon May Not Be Duplicated

726 S. Tenn. Blvd. Across From Kroger  
Only 3 Blocks From Campus  
890-0205

# LogoSun

TOGETHER AT LAST



The eyes have it! The first sunglasses with optical quality lenses in optical quality frames.

Logo Sun gives you the best of both. So your eyes get the full protection they need. With the high fashion look of America's favorite rimless eyewear.

It's all together in Logo Sun.

**Logo**  
PARIS

**Murfreesboro Optical Dispensary**

702 East Clark Boulevard  
896-2725

1004 North Highland Avenue  
890-6061

OPEN 8:00 A.M. - 5:00 P.M. MONDAY THRU FRIDAY



# **The most successful college graduates have a uniform appearance.**

Dress for success.

Enroll in the Army Reserve Officers' Training Corps, and you could graduate with the privilege of wearing the proud gold bars of a second lieutenant as well as a cap and gown.

Army ROTC is the college elective that gives you an opportunity to learn, and practice, management skills. Experience leadership styles and motivational techniques. And gain the self-confidence that can spell success in any career, civilian or military.

Start that career with the advantages only Army ROTC can give you. Talk to your Professor of Military Science, today.

ARMY RESERVE OFFICERS' TRAINING CORPS



# Undeclared juniors must file form or be penalized

By KELLY ANDERSON  
Editor-in-Chief

Students with undeclared majors who have earned 75 or more hours and haven't filed upper-division forms by Oct. 1 will be penalized, Sam Ingram,

MTSU president, said.

The students with undeclared majors who haven't filed will receive registration appointments for the spring semester during the afternoon of the last day instead of receiving a time accord-

ing to the number of credit hours earned, Cliff Gillespie, dean of admissions and records, said.

"The policy we were told to implement was to affect those students who had not declared

a major," Gillespie said. "One way to do this is by filing an upper-division form. This policy will not affect those students who have declared a major."

Upper-division forms are to be filed with the records office

while a student is a second-semester sophomore, according to Jim Covington, director of the Guidance and Counseling Center, where some undeclared majors are advised.

Please see "Undeclared," page 10



Eric Viars, a Riverdale High School junior, puts books on the shelves in Phillip's Bookstore in preparation for the fall semester.

Frank Conley • Staff

## 10% OFF COMICS

HARDBACKS & PAPERBACKS

## BOOKSTOP

411 W. Lytle St.

893-0690

9:30-6pm Mon.-Sat.

Offer expires Sept. 15, 1987



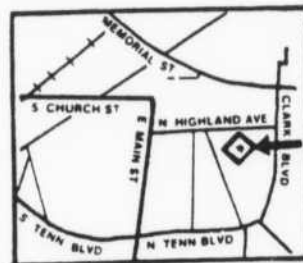
EST. 1949

### SUPPORT SERVICES

RADIOLOGY  
ULTRASOUND  
XEROMAMMOGRAPHY  
LABORATORY

### SPECIAL SERVICES

FULL SERVICE PHARMACY  
OPTICAL DISPENSARY



# 893-4480

1004 NORTH HIGHLAND AV

## MURFREESBORO MEDICAL CLINIC, P.A.

### MEDICAL SPECIALTIES

#### INTERNAL MEDICINE

ROBERT G. RANSOM, M.D.  
WILLIAM RADFORD SMITH, M.D.  
GEORGE S. HESTER, M.D.  
S. FRANK CARTER, M.D.  
SALLY H. BULLOCK, M.D.  
G. DAVID HOPKINS, M.D.  
MON THRU FRI 8 AM - 5 PM  
SAT 8 AM - 12 NOON

#### PEDIATRICS

R. JAMES GARRISON, M.D.  
CHARLES W. LEWIS, M.D.  
JERRY N. CAMPBELL, M.D.  
WILLIAM A. BROWN, M.D.  
LISA LOWE, M.D.  
MON THRU FRI 8 AM - 6 PM  
SAT 8 AM - 12 NOON

#### OBSTETRICS & GYNECOLOGY

JOHN H. ALEXANDER, M.D.  
TIM J. BEASLEY, M.D.  
DAVID T. MCKNIGHT, M.D.  
ELIZABETH R. LaROCHE, M.D.  
MON THRU FRI 8 AM - 5 PM

#### GENERAL, THORACIC & VASCULAR SURGERY

OLIN O. WILLIAMS, M.D.  
J. PAUL ABERNATHY, M.D.  
JAMES A. NUNNERY, M.D.  
WAYNE WESTMORELAND, M.D.  
GEORGE L. ECKLES, M.D.  
MON THRU FRI 8 AM - 5 PM

#### OPHTHALMOLOGY

JOSEPH E. BOONE, M.D.  
MON THRU FRI 8 AM - 5 PM

#### UROLOGY

ROBERT R. CLEVELAND, M.D.  
MON THRU FRI 8 AM - 5 PM

#### GASTROENTEROLOGY

ROBERT P. INGLE, M.D.  
MON THRU FRI 8 AM - 5 PM

#### RADIOLOGY

JAMES A. STARRETT, M.D.  
DAVID L. HUDSON, M.D.  
STAN MULLEN, M.D.

## Undeclared

Continued from page 9

"This policy is not to be punitive but helpful," Ingram said. "I know it's a nuisance but it has to be done. It is more beneficial for the student and us if they file the form on time instead of right before graduation when the form can't help. It forces a student to do something in a timely manner."

The upper-division form, after completed and turned into the records office, is evaluated and returned to the student. The student then knows how many hours he/she lacks to graduate, Ingram said.

"It's not unusual for students' parents to call me and say that their son/daughter should have graduated," Ingram explained. "By not filing a form, students miscalculate the time they will graduate."

In past years, people who had not declared majors by their

junior years couldn't register, Ingram said.

"I think that this is a healthy step between," Ingram said.

Approximately 1200-1500 students have undeclared majors, according to Covington. However, the Guidance and

Counseling Center advises about 600 students.

"Almost none of these that we see declare their majors after

their sophomore year," Covington said. "We encourage them to declare their majors during their freshman year."

## Billingsley's APPAREL FOR MEN

### Billingsley's Apparel For Men Welcomes MTSU Students

*Specializing in men's apparel  
and accessories*

*featuring name brands*

*Sero, Corbin, Ruff-hewn, Lord Jeff*

Located at Georgetown Square

9:30-6:00 Mon.-Sat.

893-0245



## The Buttercup

### Featuring ladies Designer Apparel and Accessories

*Liz Claiborne, Davey, Bags  
and Accessories*

*Lanz, Cambridge Dry Goods  
and Spirit-Eagles Eye*

*Alpenblick and Donna Morgan*

Located At Georgetown Square

Mon.-Sat. 10-6pm

893-5603



The staff of MTSU's yearbook, the *Midlander*, wishes to take this opportunity to thank you for choosing our university. We hope that your fall semester is successful, and we thought we'd help guarantee that by giving you some information about the *Midlander*.

• MTSU's yearbook is one of the least expensive college yearbooks in America — only \$13.50! We make it easy for you to buy a yearbook; just pick up a card for *Midlander* at registration. If you do forget to buy a yearbook at registration, you can come by our office during regular business hours. Or, if you wish, send us a check for \$13.50 with your name, social security number and address to *Midlander*, Box 94, MTSU, Murfreesboro, TN 37132.

• Yearbooks can be purchased no later than January 19 (the last day to enter classes in the spring semester).

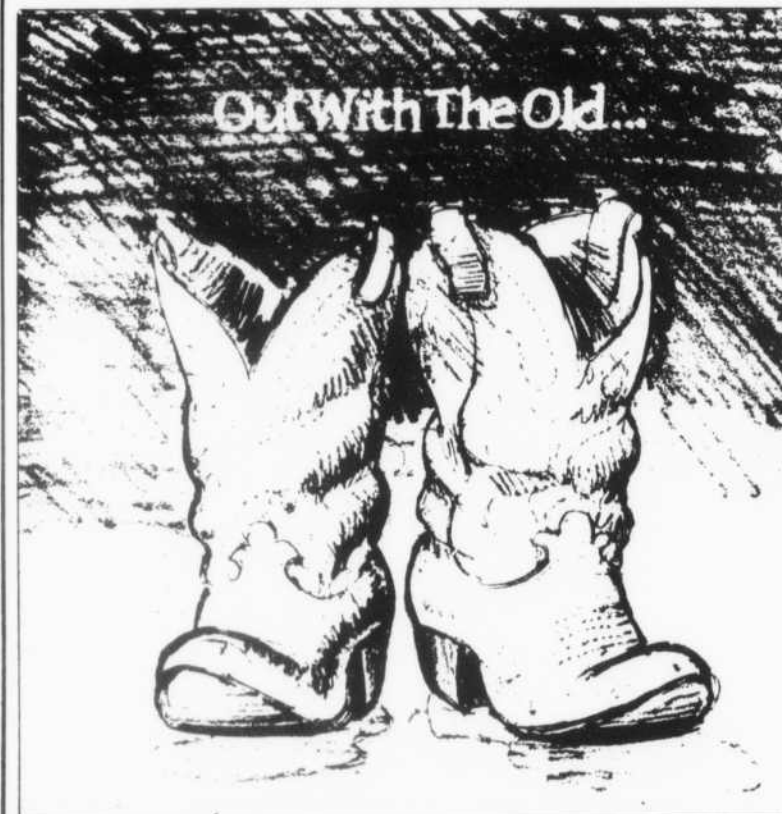
So why put it off? Order today or be sure to get your card at registration.



*Georgetown Square  
Murfreesboro, TN*

*Exquisite Fashions for the Woman Who Appreciates the Finest*

## Alber's Fashion Footwear



**Come See What Is New For Fall '87**

You've Arrived! Now dress the part in accessories from Alber's, there's nothing ho-hum about our rich-textured belts, handbags and shoes. Everyone wants to look "in", but it's really important to create an image for yourself that you're comfortable with—not to be swayed by what others say or do. That's why we like to show different looks at Alber's. Come see us. -of Georgetown Square.

**890-SHOE**  
Mon.-Sat. 10-6





## Third chair of excellence established June 16

From Staff Reports

A third Chair of Excellence for MTSU, the Adams Chair of Excellence in Health Care Services, was announced on campus Tuesday, June 16 by Governor McWherter.

The Adams Chair honors Dr. Carl Adams, whose gift of \$312,500 matches University funds of the same amount. The State of Tennessee Chairs of Excellence Endowment provides \$650,000 from an irrevocable trust to match institutional and private funds to endow each chair at \$1,250,000.

MTSU President Sam Ingram said the Chair will support and enhance the University's health care-related programs such as nursing, speech and hearing therapy, foods and nutrition, and gerontology. When sufficient funds are derived from the endowment — probably by the 1988-1989 academic year — a recognized scholar in one of the major health fields will be employed, Ingram said.

The Adams Chair in Health Care Services is MTSU's third Chair of Excellence. The others are the John Seigenthaler Chair of First Amendment Studies and the Jennings Jones Chair of Free Enterprise.

SIDELINES Wednesday, August 19, 1987 • 11

### Sidelines

Kelly C. Anderson  
Editor-in-Chief

Jonathan Pinkerton  
Entertainment Editor

Mona Vinson  
News Editor

Michelle Galloway  
Sports Editor

Rosemary Collins  
Ad Manager

Annette Ricou  
Ad Production

Wayne Cartwright  
Chief Photographer

Tim Cope  
Photography Editor

Jackie Solomon  
Publications Adviser

## An unexpected pregnancy is a hard thing to face.

893-0228  
FREE ... CONFIDENTIAL

### Looking for help?

That's why we're here.

- Free pregnancy testing
- Counseling
- Referral services

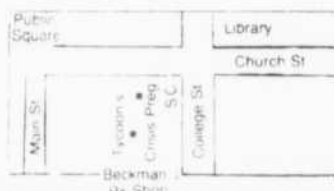
- All services provided free
- Open Tues. 9-5;  
Thurs. 9-8;  
Sat. until noon

 **CRISIS PREGNANCY  
SUPPORT CENTER**

(615) 893-0228

106 E. College St.

Murfreesboro, Tennessee 37130



MICHELIN

**CBI TIRES**  
**BRIDGESTONE**

5%

**STUDENT DISCOUNT**

With Valid ID

**Southeastern  
Tire Service, Inc.**

316 N. Front St.

893-5554


QUALITY RECAPS

NELSON ARMSTRONG

## AVOID THE NOID™

## THIS SCHOOL YEAR WITH DOMINO'S PIZZA®



  
2-12" 1 ITEM  
PIZZA PLUS  
4 FREE PEPSI

**\$9.95**

Murfreesboro Store Only  
One Coupon Per Pizza

**LARGE  
EXTRAVAGANZZA®  
PLUS  
4 FREE PEPSI  
\$9.95**



Murfreesboro  
Store  
Only  
One Coupon Per Pizza

**DOMINO'S  
PIZZA  
DELIVERS  
FREE.**



*One call  
does it all!*

**890-2602**

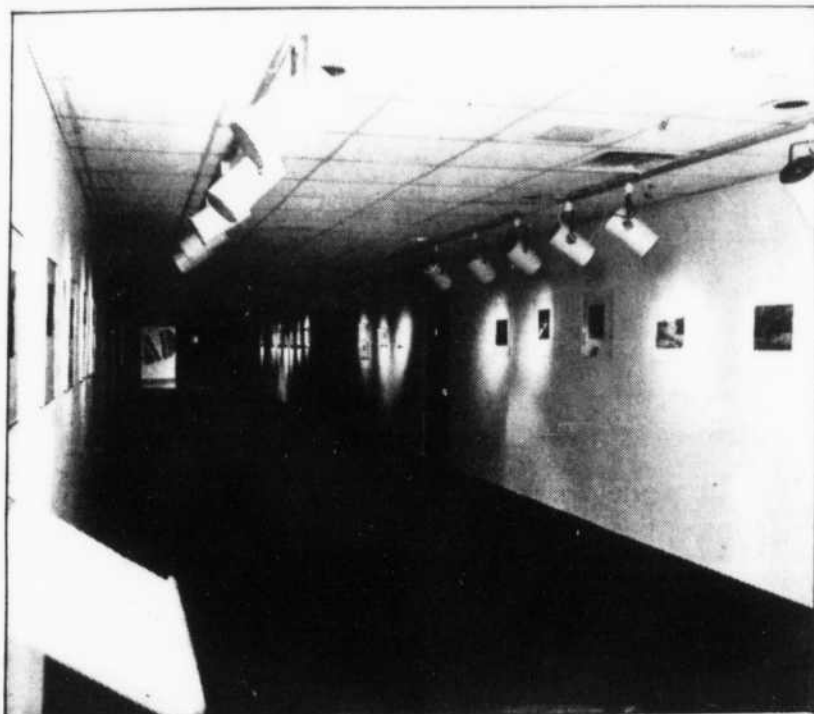
**HOURS:**

Mon.-Thurs. 11am-1am  
Fri. & Sat. 11am-2am  
Sunday Noon-1am

**1301 MEMORIAL BLVD.**

# Entertainment

## Campus offers art enthusiasts space to enjoy different, unique art works



Wayne Cartwright•Staff

### LRC Photo Gallery

By JONATHAN PINKERTON  
Entertainment Editor

Whether you have an appreciation for the visual arts, or you just want to look at something

other than the four walls you pay rent for, MTSU's three galleries have something to offer.

The photography gallery, which is located in the Learning

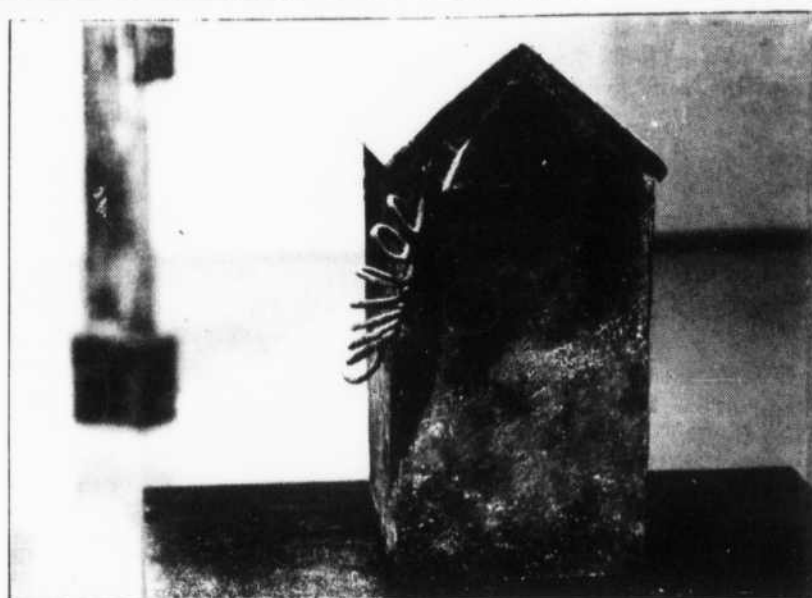
Resources Center — next to to Keathley University Center — houses exhibits from various artists, both local and nationally known.

One of the exhibits featured last semester contained winners in the annual College Photographer of the Year competition, which was held at Missouri State University.

If your artistic appreciation leans more toward sculpture, painting or drawing, the Art Barn Gallery is for you.

The Art Barn Gallery — located on the West side of campus — houses several exhibits each semester. Among the shows featured recently — an exhibit of art faculty works, several senior showings, another faculty show featuring works by this summer's Governor's school art faculty and various shows featuring works completed in art classes on campus.

Please see "Campus," page 17



Tim Cope•Staff

"Stranger in the Attic" was just one of the works shown at the Art Barn during the Governor's School of Arts faculty exhibition.

## Speakers address range of topics



"Minnie Pearl"

By JONATHAN PINKERTON  
Entertainment Editor

MTSU's Ideas and Issues Committee always comes through when it comes to presenting the university community with a wide range of guest speakers addressing an equally wide range of topics.

Last semester proved to be no exception. Atlanta Mayor An-

drew Young spoke last semester on the topic of "Blacks and Higher Education."

Mayor Young's speech was sponsored by the Ideas and Issues Committee and MTSU's Wesley Foundation.

Comedian Byron Allen — *Real People* — was another guest speaker during the Spring 1987 semester. Allen spoke to a large group of students at the LRC.

Noted author Peter Jenkins — *Walk Across America* — was the guest speaker at the May graduation ceremony, while country music's Sarah Cannon (Minnie Pearl) spoke to the graduates at last month's ceremony.

If last year's list of guest speakers is any indication of the quality of guest speakers MTSU will offer its students in the future, there is no doubt the student body will once again be



Byron Allen

pleased with any speaker they hear on campus.

As with most campus events, there is no admission for MTSU students.



COURTSOUTH  
CONDITIONING CENTER

707 W. Main St., Murfreesboro

## STUDENT MEMBERSHIPS AVAILABLE



- NAUTILUS
- AEROBICS
- FREE WEIGHTS
- RACQUETBALL
- EXERCISE PRESCRIPTION
- INDOOR TRACK
- COED
- OPEN 7 DAYS

Call For An Appointment  
**896-5123**



# Starwood Amphitheatre hosts diversified talents



Tim Cope • Staff

By JONATHAN PINKERTON  
Entertainment Editor

The second season of

Nashville's Starwood Amphitheatre offered everything from Jazz and Pop to Rap and Rock.

Country music was represented over the summer with concert performances by The Judds and Reba McEntyre (June 26) and George Strait (July 11).

The increasing popularity of Jazz brought David Sanborn (July 16) and Al Jarreau (July 31) to Nashville's only outdoor amphitheatre.

While Sanborn and Jarreau brought Jazz to Starwood, one thing was missing from Jarreau's concert...his scheduled guest star — Chaka Khan.

Duran Duran (July 18), Cameo — with special guests Club Nouveau and The System (July 19), Heart (July 3) and Billy Idol with The Cult (July 22)

Bill Thorup •  
Press Studio

Nash, Crosby  
and Stills per-  
form at Starwood  
Amphitheatre.



were among those groups and performers representing the areas of pop and rock music at Starwood.

Duran Duran opened their show with "A View to a Kill," from the James Bond film of the same name, rather than a song from their current release *Notorious*.

The three remaining member of the group performed some of their hits — most from their *Rio* album and some of their newer material from their current album.

The group sounded stronger than ever and their stage show — complete with excellent lighting and video screens — was

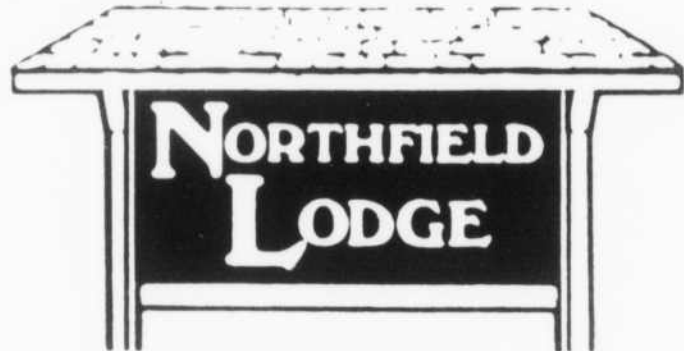
great.

Even rap music was performed under the stars with the double-billing appearance of Run DMC and The Beastie Boys.

These two top rap groups thrilled the mostly young Starwood crowd with hits from their current albums *Raising Hell* (Run DMC) and *Licensed to Ill* (The Beastie Boys).

Music of the early-seventies was represented by such performers as Crosby, Stills and Nash, Chicago and Dan Fogelberg.

Among the highlights of the summer performance at the Crosby, Still and Nash concert, the crowd was not only given the chance to hear such classics as "Wasted on the Way," and "Teach Your Children."



## WANT A GREAT SUMMER BREAK?

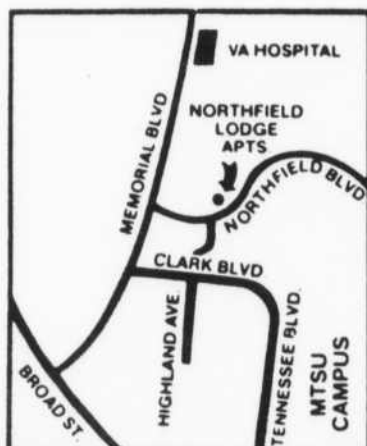
### STUDENTS

We've got one for you at Northfield Lodge Apartments. When you lease an apartment for one year, you pay regular rent for 10 months and only \$150/month storage fee for the summer!

- Close to Campus
- 1,2, and 3 bedrooms
- Swimming pool and Tennis courts
- Laundry facilities

603 Northfield Blvd.  
**890-6377**

Mon-Fri 8-6pm  
Sat. 9-5pm  
Sun. 1-5pm



## "BRAND NAMES" "FOR LESS" AT THE DISCOUNT CLOSET

WELCOME M.T.S.U. STUDENTS

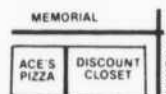


**\$1.00 OFF  
ANY \$10.00  
PURCHASE**

WITH THIS COUPON

**\$2.00 OFF  
ANY \$20.00  
PURCHASE**

WITH THIS COUPON



1711 Memorial Blvd.  
Corner of Memorial  
& W. Northfield  
Beside Ace's Pizza

### HOURS:

Mon., Wed., Fri.: 10 A.M.-8 P.M.  
Tues., Thurs., Sat.: 10 a.m.-6 p.m.  
Closed Sunday

**890-5304**



## P O R T R A I T S

• All MTSU students are eligible to have a portrait made for FREE inclusion in the *Midlander* yearbook. This year our portrait photographers will be on campus for two weeks — September 14-25. Watch the campus newspaper and bulletin board for more information.

• Questions? Call 898-2478 or come by our office in 306 James Union Building, and co-editors Michael Johnson and Jean Roesler or student publications coordinator Jackie Solomon will be happy to help you.

# **A little marching can put you a step ahead of every other college graduate.**

Get your career off to a fast start.

Enroll in the Army Reserve Officers' Training Corps now. And you could graduate with both a college degree and an officer's commission in the U.S. Army.

Army ROTC is the college elective that gives you the confidence, leadership skills and discipline essential to any successful career, civilian or military.

Get the experience and responsibility other graduates will have to wait years for. Talk to your Professor of Military Science, today.

ARMY RESERVE OFFICERS' TRAINING CORPS



# TV addicts need not worry about viewing favorite shows



Wayne Cartwright/Staff

## Learning Resources Center

By JONATHAN PINKERTON  
Entertainment Editor

"Like sand through the hour glass...so are the Days of Our Lives..."

Any devoted fan of the NBC soap *Days of Our Lives* can al-

most hear McDonald Carey recite those famous words, but what do you do if you know its almost 9:00 a.m. and your dorm's TV room is crawling with equally devoted — but detestable Phil Donahue fans?

One alternative is to buy your own TV (maybe you could tell your parents tuition went up unexpectedly) or — thanks to the University — you have at least two other options.

The first option is to simply go to the third floor of the Keathley University Center (or simply "The U.C." to anyone who has been on the campus for more than a week).

Once you have found the third floor, find the recreation room. Then you will see three glass rooms. Inside those rooms is one TV per room. Each TV is set on one of the three major networks (sorry PBS and Fox).

If you don't enjoy people yelling back at the mean characters, or verbally expressing their suspicions of future plot-lines, the U.C. TV rooms may not be for you.

In that case, there is yet another choice for more private viewing — the Learning Re-

sources Center.

To gain "admission" to a TV-viewers private haven — several monitors are set up complete with headphones you must sim-

ply present your valid student ID.

This is great, but if there is a class scheduled to view something, your time may be limited.

## JUST YOUR TYPE RESUME SERVICE

Services include consultation, layout, and resumes kept on disk for three years.

All work done on word processor with such features as: Right Justification, Bold Print, 4 Print Styles, Multiple Originals, Quality Bond Paper.

\$25.00/One Page      \$10.00/Additional Page  
By Appointment Only  
896-0716

# PUT YOURSELF IN OUR CLASS.

Don't settle for less in your educational goal. Earn the Doctor of Pharmacy degree from Mercer University Southern School of Pharmacy in Atlanta.

Join the Health Care Team as a Pharmacist with the highest professional degree available in pharmacy.

- ☐ Four-year professional curriculum
- ☐ Wide range of career opportunities
- ☐ Classes start each September and January
- ☐ Financial aid information available

## PHARM.D. AT MERCER



For a complete admissions packet call or return this coupon.

Director of Admissions  
MERCER UNIVERSITY  
SOUTHERN SCHOOL OF PHARMACY

345 Boulevard, N.E. • Atlanta, Georgia 30312  
404/653-8822

NAME \_\_\_\_\_  
ADDRESS \_\_\_\_\_  
TELEPHONE (Area Code \_\_\_\_\_) \_\_\_\_\_  
COLLEGE ATTENDING \_\_\_\_\_

# Videos, pizza await students

By JONATHAN PINKERTON  
Entertainment Editor

What is more fun than a movie, pizza and friends?

If you want to see a movie you missed when it was in the theatre, or you just want to see one you haven't seen for a while — rent it.

Likewise, if you want a good pizza, pick up the phone and dial your personal favorite pizza delivery.

Murfreesboro is packed with both pizza and video outlets. You can rent movies at almost anywhere from Cats Records and Video to the video department at Kroger and you can get pizza from any number of area pizza places.

To make it a little easier, I have compiled — with the help

of Ana Johnson — a list of area video rental places along with their prices and any specials as well as a list of some of Murfreesboro's pizza places.

## VIDEO STORES

(Some video stores require either a deposit — refunded after the movie is returned — or a Tennessee driver's license and major credit card for movie rental.)

•Broad Street Video  
Movies are \$2 per day.  
Wednesdays — two movies for the price of one.

•Cats Records and Tapes  
Movies are \$1.99 per day.  
Tuesdays — all movies \$1.

•Curtis Mathes

Movies are \$1.99 per day.  
Tuesday — two movies for the price of one.

•Kroger Video Department  
Movies are \$1.99 per day.  
Occasional special two for the price of one — unannounced until the week of that special.

•Movie Shop  
Movies are \$2 per day.  
Tuesday — one movie for two days for \$2.

•Movie Store  
Movies are \$2.69 per day.  
Wednesday and Thursday — two movies for the price of one.

•National Video  
Movies are \$3.  
Tuesday — movies are 1/2 price.

Please see "Videos" page 17

Uncle Dave  
Macon Days,  
held annually  
during summer  
in Murfreesboro,  
offered pickers  
and cloggers a  
place to have  
fun.

Frank Conley•Staff



## Attention

Midlander staff — and persons interested in becoming Midlander staff members — a meeting will be held Thursday, Aug. 20 at 6 p.m. in the Midlander office, 306 James Union Building.  
**Please contact Michael Johnson at 898-2478 if you can't attend.**

## WELCOME

## MTSU STUDENTS

*Coca-Cola*

**COKE SKIRTS \$19.75**

**OVERSIZED** Reg. \$42 **Sale**

**SWEATSHIRT \$19.50** Reg. \$42

*Coke Sale Specials With Valid Student ID*

## ANN KLEIN

**Blouses** Reg. \$59 **Sale \$19.50**

## GASOLINE

**Denim Jackets** Reg. \$59 **Sale \$39.00**

## SALE

**20% to 50%**

**LIZ CLAIBORNE  
SAKS FIFTH AVENUE  
RALPH LAUREN  
and  
Other Famous  
Designer Brands**

## NAME DROPPERS

1820 N.W. Broad St., Murfreesboro

(Next To Stones River Country Club)

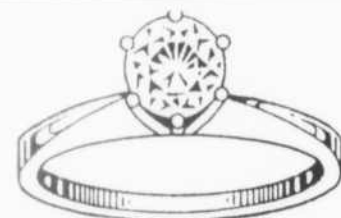
**890-4411**

Open Mon.-Sat.  
10:00-5:30



## Heritage Jewelers

"Your Diamond Store"



1/20 CT.	79.00
1/10 CT.	159.00
1/5 CT.	269.00
1/3 CT.	449.00
1/2 CT.	895.00

*The Classic  
Diamond Solitaire*

104 EAST PUBLIC SQUARE  
MURFREESBORO  
896-3115

*Student Accounts Invited  
Charge Cards Welcome*

Lay-A-Way  
Credit Terms  
Available

Jewelry  
Repair



## Videos

Continued from page 16

- Plaza South  
Movies are \$3 for two days.
- Showtime  
Movies are \$3 for two days.  
Monday-Wednesday — three movies for \$6.
- Silver Video II  
Movies are \$3.
- Video Exchange  
Movies are three for \$9.95.

## PIZZA DELIVERY

- B & L Pizza — 893-4312  
\$3 minimum delivery order.
- Domino's — 890-2602  
30 minute delivery  
Free drinks
- Mazzio's — 895-8646  
10% student discount.  
\$6 minimum delivery order.
- Mr. Gatti's — 895-1370  
No delivery — call for faster carry out.  
Two medium pizzas \$9.99

## Campus

Continued from page 16

- PDQ — 895-5005  
Delivery from 11 a.m.-12 a.m.  
Weekdays.  
Delivery from 11 a.m.-1 a.m.  
Weekends.
- Pony Express — 895-5577  
Delivery from 11 a.m.-1 a.m.  
Cokes — 10¢.

In addition to the two larger galleries, there is also a smaller gallery located on the second floor of the University Center — across from "The Grill."

If you are interested in seeing what goes into creating a work

of art — or you need a place to create your own visual art — the photography lab — located between Felder Hall and the Learning Resources Center, The Art Barn and Saunders Fine Arts Building — located across from Kirksey Old Main — are all open and available for stu-

dent use each day. For security purposes, it is advised that you carry your MTSU identification with you whenever using any of the campus facilities.



**TROY HICKS,  
OWNER**  
STATE and NATIONAL  
POWERLIFT CHAMPION



**Welcome Students  
To The Best Equipped Gym  
In Rutherford County**

**Bring This Ad For  
A Free Workout** One Per Student

**ONLY...  
\$22 Women  
\$27 Men  
Per Month**

- Low Prices On Protein & Vitamins
  - Personal Supervision
  - No Contract
  - No Hidden Charges
- 9 a.m.-10 p.m. Mon.-Thurs., 9-9  
Fri., 9-6 Sat. 12-3 Sun.  
**115 W. Vine 890-2633**

## MUSIC LAYNE

"HOME OF RENT-TO-OWN"  
SALES • SERVICE • ACCESSORIES • RENTALS

GUITARS • BANJOS • AMPS • PIANOS • DRUMS • SHEET MUSIC  
LESSONS AVAILABLE

GIBSON • WASHBURN • BOSS • ZILDJIAN • ROLAND • TAKAMINI • DOD  
FLOYD ROSE • KAHLER • PEARL • MARTIN • ADA • ROCKTRON • QSC • LOTUS • SOUND  
TECH • CHARVEL • LANEY • PAISTE • KRAMER • DEAN MARKLEY • FENDER • SAMICK

\* FINANCING AVAILABLE \*  
1605 MEMORIAL BLVD

**895-5010**



**\$1,000,000**

**Advantage**

**PLAY AND WIN  
A NEW SET OF WHEELS, FABULOUS TRAVEL,  
OR ONE OF 500,000 PRIZES!**

Now Playing At

**PHILLIPS BOOKSTORE**  
Located in the University Center

A National Participating Bookstore Game



## "The \$1,000,000 Advantage Sweepstakes"

When students buy their new and used course books for the Fall term at Phillips Bookstore, they will discover they have a chance to win over **\$1,000,000** in prizes. Phillips Bookstore is participating in a nationwide promotion, "The **\$1,000,000 Advantage Sweepstakes**," which will offer such valuable prizes as new 1987 Volkswagen cars, Macintosh Plus computers, vacation cruises calculators-over 500,000 prizes in all.

Course books will have a game sticker on the cover which contains a special scrambled message. In December, when the students bring the books to the Phillips Bookstore buyback counter, the message will be decoded to determine if their scrambled message reveals a prize. Each student will know instantly if he or she is among the approximately one out of every two calculated to win. The more stickered books students bring to Buyback, the better their chances of winning.

Full details about the **\$1,000,000 Advantage Sweepstakes** are available now at **Phillips Bookstore**.

# Sports

## Washington and Webb earn highest honors



Webb

By MICHELLE GALLOWAY  
Sports Editor

This was a special summer for two of the best basketball players to ever play the game for MTSU.

Number 25 will be fading into the record books as an award-winning jersey, due to the talent of former women's basketball star Kim Webb.

The honor is the first-ever for a female athlete at MTSU.

A graduate of Smyrna High School, Webb flourished into one of the nation's premiere star-players.

She earned All-OVC honors three out of her four years, proving she was one of the best.

Webb's perseverance shows in the record books. She broke the scoring record this year over former teammate Jennifer

McFall.

She also set numerous career and individual records that are not likely to be challenged in the near future.

Webb was recently named OVC Female Athlete of the Year and was named first-team All-American.

Webb joins a list of three that includes football player Teddy Morris, basketball star George Sorrell and former baseball great Danny Moore. These have been the only jersey retirements made at MTSU before Webb.

Along with Webb's jersey retirement, are hopes for a long

career for former Blue Raider star Duane Washington.

The NBA's Washington Bullets selected him as a second-round draft choice and 36th pick.

Their second-round choice became the second highest NBA draft selection in the history of MTSU when he was picked.

"I'm very excited," Washington said in *The Daily News Journal* on June 23. "The Bullets had been in contact with me and they had talked with the coaching staff at MTSU."

Washington averaged 7.3 points per game in his two-year



Washington

MTSU career, but his contributions are 134 steals and 452 assists. His total assists mark holds the MTSU and the OVC single season record at 255.

"I never regretted going to Middle Tennessee," he said.

**Applications are being accepted for  
staff writers and copy editors at  
Sidelines NOW.**

Come by Room 310 of the JUB to apply  
Ask for Crystal Nelms, *Sidelines* fall editor.

### SUNNY SIDE-UP TANNING CENTER

A Sunbelievable Experience

FOR  
APPOINTMENT  
CALL  
890-6100



**10%  
DISCOUNT  
FOR  
STUDENTS**  
With Valid ID

828 N. Tenn. Blvd.  
(Next to Goody's in Kroger Shopping Center)

7:30-10 Mon.-Fri.  
12-6 Sat.-Sun.



### MIDDLE TENNESSEE BARBER & STYLING COLLEGE

*It's Today's Students  
Who Create Tomorrow's Trends*

**HAIR CUTS PERMS  
SPECIAL EFFECTS  
HAIR COLORING  
RELAXERS  
CONDITIONING TREATMENTS**

All Work Done By Students  
Supervised By  
Licensed Instructors

**Bring This Ad For  
\$2.00 Off  
Any Service**  
(Not Good With Other Discounts)

**WALK-INS  
WELCOME!**

Mon., Tues., Thurs. & Fri. 9-7  
Saturday 9-5

1509 E. Main St. 893-0423



# Stanford new athletic director; Smith new coach



Wayne Cartwright•Staff

Newly instated athletic director John Stanford stands in his former baseball office when he earned coach of the year honors.

By MICHELLE GALLOWAY  
Sports Editor

To a lot of people the name John Stanford will always follow the word "coach." After 14 years of coaching at MTSU, Stanford was announced this summer as the new athletic director.

During his reign as baseball coach, Stanford compiled a 402-272-4 record to become the win-

ningest baseball coach in the history of MTSU. Before entering the college level, Stanford also coached at Shelbyville Central High School and Motlow State Community College.

"John has no enemies, people just immediately like him," said Dr. Charles Babb, chairman of the search committee.

One of the first major obsta-

cles that Stanford will face is the never-ending problem of money. The budgets have been tightened throughout the nation, especially in Division I-AA schools.

Scholarships have been reduced and the minor sports are the hardest hit.

"Fund-raising will be one of my top priorities," said Stanford. "Every athletic department this size has problems. The big sports are basketball and football, yet the coach in tennis or volleyball or one of the other minor sports is working just as hard, they just don't get as much notoriety."

Also this summer a change was made in cross-country.

The spot was left vacant after the sudden departure of 14-year head coach Dean Hayes.

Smith is also on the MTSU basketball coaching staff bringing a solid basketball background and an adequate amount of coaching experience when he joined the crew in 1985.



Wayne Cartwright•Staff

Assistant Basketball Coach Tommy Smith looks on at a summer camp after being named as the new cross-country coach.

Initially, Smith began his coaching career at Austin-Peay State University, first as a graduate assistant, then as a full-time assistant coach for two years. Later, he held the head coaching position at Cumberland College.

He also served as assistant coach at Cumberland for the

1979-81 seasons, when the school was still a junior college.

A native of Nashville, Smith rewrote the history books at Lebanon's Castle Heights Academy. He earned All-Mid-State and second-team All-State honors. He is the only former basketball player in the Castle Heights Athletic Hall of Fame.

top (top) 1. at or being the top; highest 2. the choicest part, the best or finest of its lot or kind 3. to surpass; outdo

# TOPS.

## CHOICE HAMBURGERS OUR NAME SAYS IT ALL!

**1/4 lb. Hamburger..... .99**

Mayo, Must., Ket., Pickle  
Lettuce, Tomato, Onion

**Double Burger..... 1.69**

**Cheese Burger..... 1.09**

**Double Cheese  
Burger..... 1.89**

**1/4 lb. Hot Dog..... .99**

**Chili Dog..... 1.09**

**Fries..... .39**

**Drinks..... .39**

Coke Products

**Moon Pies..... .39**

**BRING IN THIS AD AND  
RECEIVE A FREE  
ORDER OF FRIES WITH  
THE PURCHASE OF  
ANY HAMBURGER  
AND SOFTDRINK**

*Offer Expires 9/28/87*

**HOURS:**

9 a.m.-10 p.m. Mon.-Thurs.

9 a.m.-12 p.m. Fri. & Sat.

**109 S.E. Broad St.    809 Lokey Ave. (Murfreesboro)    230 N. Lower 1st (Smyrna)**

# BLUE RAIDER BOOK & SUPPLY, INC.

*Serving the MTSU Campus*

## SPECIALIZING IN:

- Greek Shirts, Mugs, Paddles, and More!
- New and Used College Textbooks!
  - Art and Engineering Supplies!
  - College and Office Supplies!
  - MTSU Clothing and Gifts!
  - Graphic Supplies!



Store Hours: Mon.-Fri. 8-5:30, Sat. 11 -3

**Save 25% When You Buy Used Books**

We Pay Top Dollar For New & Used College Books

**Located In The Old Raider's Ark Building**

American Express, Visa and Mastercard Accepted

**BLUE RAIDER  
BOOK & SUPPLY, INC.**

1321 Greenland Dr.  
Murfreesboro, TN  
890-7231

*"Your Off Campus Bookstore For Your On Campus Needs"*



# Alumni Gym remodeled and ready for year

From Staff Reports

An MTSU Wellness and Fitness Program will provide exercise activities and personal health awareness lectures for faculty, staff, and students in the Alumni Gym.

Guy D. Penny, chairman of the Department of Health, Physical Education, Recreation and Safety, created the Wellness and Fitness Program to provide students who major in this de-

partment with practical experience and to encourage participation in the program from persons interested in maintaining good health.

One major component of the program is service. For a reasonable fee, a person will be given a complete fitness test. With an extra fee, a Diagnostic Cardiovascular Test will be given by local doctor David Hopkins.

"After the person's health has

been evaluated, he will be administered an exercise prescription," Penny said.

Another aspect of the program is health education. Once a month, an expert in a health-related field — such as nutrition, stress management or weight control — will deliver an informative lecture to program members.

Memberships can be purchased yearly, each semester, or during summer sessions. A tentative list of membership costs may be obtained from Penny.

The Alumni Gym has been remodeled to include classrooms, and additional seating has been installed.

"We've retained the floor and the playing area," said Campus Planning Director, Charles Pigg.

Exercise equipment, aerobic exercise classes, a swimming pool, and a walking and jogging track will be available for use by program members.

"There are locker rooms for

the women's volleyball and track teams and for the men's track team," Pigg said.

The Alumni Gym, which was built in 1949, replaced a smaller gym which is now a part of the

Cope Administration Building. The cost of remodeling the Alumni Gym was approximately \$2.4 million. It has recently opened its doors since the closing of it in the fall.



The Alumni Gym

Tim Cope • Staff

**\$7.00 Haircut**

Reg. \$9.00

To First Time Customer & Students Only

**\$25.00 Perms** Reg. \$30.00

**WALK-INS WELCOME**

Marcella Allen • Robbie Kennedy-Dabney  
David Chaffin • Robbin Young

Suite A

604 W. College St. At Lytle  
(Jones Locker Bldg.)

**CUTS**  
With **Class**

895-4115

## THE COMPANY STORE

510 S.E. Broad St. 890-0020

(Next Door To Coca-Cola Company)

## Coca-Cola Clothes and Gifts

Logo printed twill  
tape inside neck  
and front placket

Twill collar

Woven trim

Ribbed cuffs



The most famous  
logo in the world

Longer in the back

The Famous Shirt

The Most Famous Shirt you'll ever wear

long sleeve rugby style with logo front and woven trim 100% Cotton

**MTSU BACK TO SCHOOL**

**15% OFF**

**ANY PURCHASE**

# Campus invaded by summer campers



Frank Conley•Staff

Band campers from South Ridge High practice flag techniques under the leadership of Keith Meece in front of the James Union Building.

By MICHELLE GALLOWAY  
Sports Editor

Summertime was hot and humid, and amid this unbearable weather were campers.

Camps were a never-ending

## Football begins

By MICHELLE GALLOWAY  
Sports Editor

MTSU opened its ninth football campaign under Head Coach Boots Donnelly when freshman reported for physicals on Aug. 7.

Approximately 110-120 players, including freshmen and "walk-ons," reported to the Blue Raider camp.

"We've got a lot of work to do," said Donnelly, whose MTSU teams have compiled a 53-36-0 record over the past eight seasons. We lost some fine players last year and we've got to bring some people along to take their places."

Perhaps the largest loss the Blue Raiders received was the suspension of All-OVC senior Dejuan Buford. The free safety senior from Antioch has been suspended indefinitely for disciplinary reasons.

"We are sorry to lose Dejuan," said Donnelly. "But we have certain policies and expectations of our players and we feel we need to adhere to them."

Despite the absence of Buford, Boots continues to be optimistic about the upcoming season.

"Some of our incoming freshman will undoubtedly have to play, perhaps as regulars, but certainly as reserves. And we don't have a lot of time to get them ready."

The Raiders will open the season Sept. 5 on Vanderbilt's Dudley Field against Tennessee State.

impossible feat known as harmony.

The parking lots were always filled with colorful waving flags, while practices were continued to concentrate routines in sequence with the music from dawn to dusk.

For weeks, cheerleaders filled the gymnasiums. While the cheerleaders' lungs reached their peaks in the gyms, professors reached theirs as well in the surrounding classrooms.

Not only were sights filled with cheerleaders and bands, but the screams of encouragement could be heard every other week while baseball and basketball campers continued to strive for success.

Throughout this summer a lot of happy-looking kids were seen running about campus in the



Frank Conley•Staff

A double shoulder stand at cheerleading camp is attempted.

early morning hours full of excitement for what the day held.

These same kids could also be seen stumbling back to their rooms exhausted from the new techniques that were attempted during the course of the day.

From a Pee-Wee Basketball Camp, to Boots Donnelly's start of the football season, MTSU was the place.

The kids thought of it as a vacation while the coaches and instructors counted the hours until its end.

Well-known guests visited camps all over the Ohio Valley Conference. Chuck Person highlighted one of Bruce Stewart's Basketball Camps, while Steve Alford visited rival Tennessee Tech at their camp.

Now, the annual "calm," "quiet" and "peaceful" summer at MTSU has ended.



WELCOMES  
MTSU

NEW & RETURNING  
STUDENTS

10% Discount  
On All Orders  
With Student ID

New Store Opening Soon!  
Near Bonanza  
On Church St.

POSITIONS OPEN  
ALL SHIFTS  
We Can Work Around  
Your Class Schedule!

903 NW Broad 890-4398

## MAINSTREET



Thurs., Aug. 20  
THE CACTUS  
BROTHERS  
Featuring all the members of  
walk the west with special guests  
ELEVEN 59



Fri., & Sat.  
Aug. 21 & 22  
THE BANK

Formerly Kilo



Wed., Aug. 26  
MILITARY SECRETS

Thurs., Aug. 27  
BURNING  
HEARTS



Fri., & Sat. Aug. 28 & 29  
JOE SAVAGE





NOBODY CARES FOR EYES MORE THAN PEARLE.

- Wide selection of frames
- Same day service  
in many cases
- Prescriptions filled
- Contact lenses
- Eye examinations available  
from an independent  
Doctor of Optometry

**DR. SERGE B. MARTIN**

Optometrist

Adjacent to Pearle  
Vision Center

- Specializing in  
Contact Lenses
- Same day service  
in most cases
- Glaucoma & Driver Test
- General eyecare



**893-6070**

1661 Memorial M'boro

**896-3937**

1661 Memorial M'boro

**K.U.C. Cinema**  
Feature Films

3:30, 6:00 and 8:30 pm.  
Monday through Thursday

Check your MTSU post office  
box for your Fall'87 Films schedule.  
Popular full-length feature films  
are shown each week.  
Admission prices from 99¢ up!

*Entertainment you can afford!*

**College should be more  
than just going to class**

Your college experience should be more than class work. Student Programming offers opportunities for you to broaden your educational experience through participation and hands-on-experience. Each month during the school year the five Student Programming Committees offer extra-curricular activities and programs to the campus community. These events are cultural, educational, and entertaining! Watch for the monthly calendar-CAMPUS HIGHLIGHTS-for information about our programs. If you would like to become involved in the planning and production of these events, come by our office in the KUC (Room 308) and sign-up to help out. No experience necessary--this is a Learning while working process. And we are ready to work with you!! Positions available immediately.

# STUDENT PROGRAMMING

*The Dance Committee presents:*

Colorful...exciting...a theatrical event!

## JOE SAVAGE

Thursday August 27, 8:00pm

JUB Tennessee Room

Admission Only \$2.50

THE

**SAVAGE**

EXPERIENCE

*Spellbinding theatrics-Magic in Music*

