

Groups back Scarlett

Support for President M.G. Scarlett has been shown by various professional clubs and groups in Murfreesboro, particularly with a petition begun by Larry S. Irby DDS.

The petition stemmed from the concern of a representative group of Murfreesboro professionals who "deplore the continuous attacks directed at Dr. Scarlett," according to Irby.

"The gathering was a spontaneous reaction to publicity about Greer and Scarlett," said Irby, and resulted in the signatures of various business and professional citizens of Murfreesboro, including eight lawyers and five doctors.

"We want the students to know," said Irby, "that the people of Murfreesboro are just as

concerned as they are about the current attacks directed at Dr. Scarlett."

A copy of this petition has been left at the Murfreesboro Chamber of Commerce for professional men and women to sign, he said.

Another example of support for Scarlett has come from the Murfreesboro Bar Association

in the form of a vote expressing confidence in Scarlett.

A resolution was specifically asked for, but nobody presented one, according to Bill Burton, vice-president of the Bar Association. The vote was not unanimous, although most of the practicing attorneys in Murfreesboro did vote for Scarlett, stressed Burton.

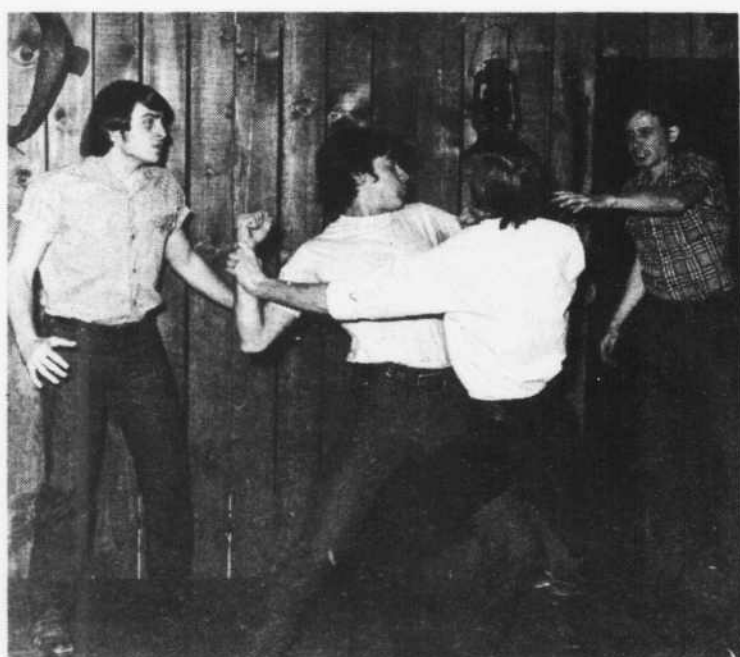
Middle Tennessee
State University

SIDELINES

Vol. 45 No. 27

Murfreesboro, Tenn. 37130

Wednesday, Dec. 1, 1971



'Rainmaker'

Michael Stewart and Ronnie Meek attempt to stop a fight between Bruce Newman and Rex Thigpen in "The Rainmakers"

Clubs sponsor blood drive

The ROTC Track and Sabre Club and the ASB in coordination with the Red Cross are sponsoring a blood drive on Dec. 7 in the University Center from 10 a.m.-4 p.m.

A first and second place trophy will be presented to the fraternity which has the highest percentage of participating members and total solicitation of other donors.

Two trophies will be presented to sororities and two will be awarded to participating campus organizations.

Any donor who is rejected by the Red Cross will still count for his organization toward the awards.

Abernathy to view Black Power

Rev. Ralph Abernathy, noted civil rights leader, will discuss "Civil Rights and Black Power" tonight at 8 in the Dramatic Arts Auditorium.

Abernathy succeeded the late Martin Luther King, Jr., as president of the Southern Christian Leadership Conference.

He first came into national prominence when he, along with several other black leaders, led the famous Montgomery, Ala. bus boycott during 1955-1956.

This boycott acquainted the world with the practice of non-violent direct action against segregation and discrimination in the United States.

Since Montgomery, Abernathy has been jailed many times and received much abuse during his non-violent protest activities.

During the Montgomery campaign, Abernathy, helped to found the Montgomery Improvement Association. This organization was the direct forerunner of the SCLC. Abernathy still serves as president emeritus of M.I.A.

Abernathy, together with other SCLC executives and board members, directs the SCLC's programs and formulates its policies.

He was the chief financial and budgetary officer of the SCLC before he became president of the organization. The black leader was also a close associate and advisor of his long-time friend, King, who was the first president and founder of the SCLC.



Activist

The fourth speaker in the Ideas and Issues series is Ralph Abernathy, president of the Southern Christian Leadership Conference.

Republicans raise money for elections

Ron Reitdorf, executive director of the Tennessee Republican Party told a dinner meeting of MTSU Young Republicans last Tuesday night that the Republican party has raised over \$84,000 from \$100 contributions since February.

Reitdorf indicated that the Republican Party is organizing for the elections next year. He stated, "Everything we do is to elect candidates."

The Republican party has compiled a mailing list of over 10,000 to facilitate distribution of party information, he further stated.

The director, commenting on recent charges of patronage, said, "Patronage is what we want to believe it is." He then cited examples of both Republican and Democratic patronage.

Reitdorf cited the need for a Republican legislature. "We need seven seats and we are looking at the election figures inside out," he declared.

He further indicated that the chances of unseating incumbent Congressmen are "miniscule". He assured the group that Senators Baker and Brock were safe from a Democratic candidate.

He warned the group, however, that Richard Fulton, D-Nashville, is a likely gubernatorial candidate in the next race.

Reitdorf also stated that the Democratic party had possibly some dark horse candidates for the governorship in Jim McKinney, John Wilder, Bob Hawkes, Hudley Crockett, Stan Snodgrass and Joe Henry.

Reitdorf, when questioned about the Scarlett controversy, stated that the Republican party had been impuned over some allegations. Dr. Kenneth Ezell and Lynn Greer, Republican State Board of Education members, have been mentioned in the press as having questioned Scarlett's leadership in past board meetings. He stated that Scarlett, Greer and Ezell were all "men of character" but declined to take sides in the matter.

Prior to Reitdorf's address, Phillip Cash, MTSU Young Republican President, criticized the actions of student and faculty leaders, last Monday in that they "succumbed to the emotions of the moment and called hasty meetings which were premature and ill-thought out."

Sacred harp singers to perform

Christmas festivities at the Oakland mansion will feature the Sacred Harp Singers Saturday, Dec. 4, 3:30 to 5 p.m. and Sunday, Dec. 5, 1:45 to 2:45 p.m.

The twelve-member group, directed by Margaret Wright, associate professor of music, sings a capella, seated around a table in sixteenth century madrigal style. The repertoire consists of early American Sacred Harp hymns and spirituals and southern folk songs and ballads.

They will also perform at the West End Methodist Church in Nashville, Dec. 7, and in Santa Fe, Tennessee, Dec. 5.

Other performances scheduled will be at the Riverbend Country Club, Shelbyville and the First

Presbyterian Church, Murfreesboro Dec. 14.

They will record for WSM Tuesday, Dec. 9 at 4 p.m. The radio station has broadcast their programs of Christmas Folk Music each Christmas Eve for the past twenty-two years.

The Singers have toured the south-eastern states in concert each spring for the past twenty-four years. This is the only college group of singers in the United States which specializes in the singing of the "Fa, So, La" shaped note hymns of the early American settlers.

The group was organized in the summer of 1947 and the unusual quality of the singers has afforded them opportunities to sing for many distinguished audiences throughout the south.

File 13

Names to be printed on Midlander

Midlander editor Melanie Spain has announced that students may have their names printed in gold on the cover of the 1971-72 annual. Students interested in this service may contact Miss Spain at the Midlander office in the Student Union building or by phone, 898-2748.

Psychology Club tours hospital

The Psychology Club will tour Central State Hospital tomorrow at noon, according to Susie Pottorff, secretary of the club.

Police set duty hours

Students needing to get the campus police can call 898-2424 Monday thru Friday from 7:30 a.m. to 2:30 a.m. Someone will be at the Security Office to answer any calls. On weekends students should call the Murfreesboro police department which can call the campus police any time. A campus policeman will be sent, not the Murfreesboro police.

DON'S KITCHEN KORNER

6:00 A.M. to 8:00 P.M.

Closed Sundays



Owners & Operators
MR. & MRS. JACK HAYES
Winners - Gold Cup Award
Take Out Orders Filled Promptly

- Full Meals — Short Orders
- Large Variety Salads
- Homemade Pies
- Menus Varied Daily

125 N. MAPLE

93-9846

MURFREESBORO

Clover Bottom visit

Marchers to seek help for retarded

The Tennessee Association for Retarded Children and Adults is sponsoring a rally on behalf of Tennessee citizens labeled "mentally retarded" Saturday at 9:30 a.m.

The rally, co-sponsored by the Tennessee Human Rights Campaign, will take place on the steps of the state capitol and on the grounds of Clover Bottom Hospital and School.

The purpose of the rally, according to Steve Brumfield, THRC director, is to dramatize to legislators and the public the necessity of providing alternatives in the community to large state institutions for the retarded.

Rally endorsed

Dr. Richard Treadway, state commissioner of mental health, and David Ray, assistant director, division of mental retardation services, have endorsed the event.

It is hoped by TARCA and

THRC that Gov. Winfield Dunn, actors Cliff Robertson and David McCallum, star of the "Man from U.N.C.L.E.," will be on hand to address the group.

After the initial gathering, the participants will march through the downtown area of Nashville and then board buses and ride to the outskirts of Donelson. From there they will march to

the Clover Bottom Hospital and School where they will have another rally. The marchers will also be bused back from Clover Bottom.

"The residents of Clover Bottom need the success of our efforts and our support to insure humane treatment and acceptable living conditions", said Brumfield.

State Democrats to hold workshops in Nashville

Tennessee's Democratic party is sponsoring a statewide conference and rally Thursday at the Municipal Auditorium in Nashville.

The state Democratic Executive Committee will meet from 9:30 a.m. - 10:30 a.m. All democrats can attend this pre-conference meeting.

Registration for the conference begins at 10:30 a.m.

Robert Moss, deputy director of campaigns and party organization for the Democratic National Committee, will keynote the conference at 11 a.m. Moss also is the author of the Democratic Voter Registration Manual.

Simultaneous workshops on voter registration, fund raising and public relations will be held 11:30 a.m. - 12 noon.

The delegates will participate in an old-fashioned Tennessee box lunch at 12:30 p.m. - 1:30

p.m. A panel workshop on understanding new party rules, constitution and by-laws will be held from 1:30 p.m. - 3 p.m. The workshop's keynote speech will be made by Rep. Gwen Fleming, member of the state legislature.

Helen Bain, past president of the National Education Association, will act as chairman. Charlotte Allen, Nanie Rucker and Jean Livingston, state Democratic Executive committee members will serve on the workshop's panel. Harry Asquith, chairman of the sub-committee on party rules and by-laws will act as a discussion resource.

A discussion on the state democratic delegate selection process will take place at 3 p.m. - 3:30 p.m. From 3:30 p.m. - 3:45 p.m. there will be demonstration district caucuses.

The rally will be held at 7:30 p.m. Free tickets to this rally are available in the ASB office.

The Little Store With The Big Welcome

19 South Side Square

Mullins Jewelry

Keepsake Diamonds

893-8403

POOR RICHARDS'S

Public Square

Black Lights in stock
Unusual Games and Gifts
Various Handmade items Available
Large selection of Black Light & Black and White Posters
King size water beds reg. \$34.95 now \$29.95
Poor Richards
Christmas Special
all reg. \$3.86 albums \$3.44
all reg. \$4.86 albums \$4.44

10% Discount to MTSU students showing I.D.

Open Daily 10 a.m. til 9 p.m.



Medical school controversy splits party - News Analysis

Controversy over a proposed medical school at East Tennessee State University in Johnson City has touched off a sectional dispute pitting leaders of Tennessee's Republican party against each other.

Rep. James Quillen, a powerful Republican congressman from East Tennessee's first district, is co-sponsoring a bill with Rep. Olin Teague (D-Texas) which would give the state federal aid to establish a medical school in Johnson City.

Federal funding

The school, which would have to operate in conjunction with the Veterans Administration hospital in that area, with federal funds covering 90 percent of the cost. The government would also pay 90 percent of the operating costs for the first year and a decreasing amount of the costs for eight years.

Republicans in the first district want the medical center in Johnson City, claiming that it will help eliminate the traditional shortage of doctors in the Appalachians. In the past few months, the pressure has been put on Gov. Dunn and the legislature to

By Larry Harrington
State Reporter

support the plan.

This month local interests invited the legislators to ETSU as part of their lobbying effort. About 60 lawmakers and other prominent Tennesseans were handsomely wined and dined. It will be a while before the effectiveness of such efforts can be measured.

Promotes Memphis

So far the Dunn Administration has not tried to determine what Tennessee must do if it is to qualify for one of the five medical centers which would be constructed under the bill. Dunn has said he considers it his first duty to upgrade the UT medical center in Memphis. The Higher Education Commission feels the same way.

Citing two recent studies of medical education in the U.S., opponents of the Johnson City unit claim the best way to upgrade the system in Tennessee is to provide ample funding for the UT program. A Carnegie Commission Report a year ago

does not list Tennessee as one of the states in need of another medical school, and a more recent report for the National Fund for Medical Education recommends that additional doctors should be trained by expanding existing institutions rather than building new ones.

Rep. Dan Kuykendall, a Memphis Republican and old ally of Dunn, cites these arguments when he calls for more aid to his hometown school East Tennessee, he claims, has as many students enrolled in medical school as any other region.

Congressman errs

This is not exactly accurate. Statistics show that the region has 93 medical school students per 100,000 people as compared to 107 per 100,000 for the state overall.

Kuykendall is correct in saying that no more students from the East-state area leave Tennessee after graduation than their counterparts in West Tennessee. About 25 out of 50 students from both sections leave the state.

Kuykendall believes the problem is one of encouraging doctors to stay in rural areas. Along

with Rep. Nick Galifianakis (D-N.C.) he is sponsoring a bill designed to do just that.

Like Gov. Dunn, Sen. Howard Baker is caught between the powerful East Tennessee, Quillen, and a growing Republican electorate in Memphis. Of course, Baker is facing reelection, a condition which makes his reported position on the Teague bill no less than courageous.

Baker avoids bill

Though unconfirmed by Baker's office, it has been reported that the Senator refused or, in one way or another, avoided sponsoring the Teague bill in the Senate. "If that's true," one political analyst noted, "it was a downright Albert Goreish thing to do."

James Quillen is "the man" in the rocked ribbed Republican hills of the first district. His animosity could hurt Baker, who is sometimes criticized for becoming too aloof since his election to the Senate.

The controversy over the proposed medical unit is confusing in that UT Knoxville, though ori-

ented to the East state, is opposed to the ETSU plan. The reason, of course, is that the medical unit at Memphis is part of UT.

The administrators want adequate funding for that school. Then, if there is to be a new medical school, they believe it should be in Knoxville, claiming that only in a metropolitan area can students become experienced with a broad range of medical problems.

Republicans compete

Three areas of the state, each with significant Republican strength, are vying for the prize. Memphis wants additional funds to upgrade the existing medical school. Johnson City and ETSU want a new facility. Knoxville may be happy with either, but some politicians will push for a medical school there.

Local interests will continue to pressure the Governor, the General Assembly and the senior senator. Taking politics into account, they will have to decide if Tennessee needs another medical school. Then they will have to balance political ambition with community need.

Pianist to present Chopin concert

Richard LaMar, author, pianist and professor, will be presented in concert Friday, Dec. 3, in a recital of works of Chopin.

LaMar is author of "College Piano Pedagogy" which is used as a text in many schools throughout the country.

LaMar studied at Florida State University and the Juilliard School of Music with Bauer, Barth, Dohnanyi, Friskin and Kilenyi.

The pianist has taught at Texas Technological University, the University of North Carolina, and Bowling Green State University. He is presently teaching at Belmont College in Nashville.

The concert will begin at 8 p.m.

Students file form

Students who have earned 60 semester hours or more must have their upper division forms on file before being allowed to register for the spring semester according to L. Dean Hess, director of records.

The forms, which can be obtained from any advisor, should be filed by Friday, Dec. 10. The student's advisor will assist in completing the forms and will take care of returning them to the records office, said Hess.

Class changes can be made by submitting a substitution form to the records department. Changes in majors or minors can be made by submitting a new junior-senior form with only the changes on it.

The Flower Center

893-2909

130 N. Church St.

Special discount
to all MTSU students.
Free delivery

Theatre to perform 'Andersonville Trial'

The Murfreesboro Little Theatre will present "The Andersonville Trial" Dec. 3-11 at 8:15 p.m. excluding Monday Dec. 6. A student matinee will be held Saturday, Dec. 4 at 2 p.m. The production is a portrayal of a war crimes trial at the close of the civil war.

Henry Wirz, portrayed by Tommy Gray, former MTSU student, was the only Confederate soldier to be convicted of war crimes. Kathy Jones, publicity chairman for the play indicated that Wirz, the commandant of a southern concentration camp, Andersonville, was ironically innocent of the charges placed against him.

Fourteen thousand Federal soldiers died at the installation from hunger, disease, and atrocities, that Wirz was powerless to halt, the speech and theatre instructor indicated.

Wirz maintained his innocence despite the prosecutor's claims

that a soldier is obligated to disobey orders that are opposed to human decency. In a military society where obedience is cardinal substantiation of this point becomes paramount to his case. The prosecutor is played by Don Cowan.

Eugene Strobel, biology instructor, portrays Schade, the assistant defense attorney in the drama. Students Richard LaFavor as Judge Thomas, Phil Yates the Court Clerk and Herbert Lewis as the Lieutenant are cast in the MTL production. Phil Trusty as Davidson, and Tom Ford as Culver portray counterbalanced witnesses.

Playwright Saul Levit wrote the play, based on actual trial records, following World War II. The production was first presented on Broadway in 1959. The MTL production is directed by Richard Boyd, Kirtland High School Drama teacher.

**MTSU students
save time and money
at Quick-Wash Laundry**

110 North Baird Ln.

1 block from MTSU Campus

Next to Sgt. Pepper's

- 30 GE & Maytag Washers
- Quick Gas Drying
- Coin-operated Dry Cleaning

SIDELINES announces

Editor's Note: This will be the only issue of SIDELINES to be published this week. Next week the newspaper will resume its regular publishing schedule with Tuesday and Friday papers. SIDELINES altered its schedule to give more even coverage to news events after the holiday break.

City Cafe

Homecooked meals

Homemade rolls

Desserts

5:00--7:30

107 E. Main

Students Always Welcome

Mr. & Mrs. Ernest Watson

Visit the Colonel

MTSU STUDENTS
WELCOME



Try our Colonel Burger

It is Great

Only 59¢



Dinner

ONLY 99¢

With this coupon

Dinner includes 3 pieces of Kentucky Fried Chicken, potatoes, gravy, rolls and cole slaw.
Offer expires Thursday evening, Dec. 9th.

Clip Coupon And Take To

COLONEL SANDERS' RECIPE

Kentucky Fried Chicken.

519 S. Church St.
896-4120
Murfreesboro,
Tenn.
SUDDEN
SERVICE

Gallery review

Art majors resume senior shows

Roy Overcast, Ed Howell and Gayle King opened their senior show at the Art Barn Sunday. The show which will be up for one week is the first in a series of senior shows this fall.

Overcast has command of a wide variety of ceramic technique. His pots, bottles, and sculptures are a pleasing combination of refined control and exploitation of the freedom of the medium.

He has tried to experiment with a wide range of techniques with solutions from the funk esthetic to mountain potter.

He considers a bottle entitled "Natural East and West" to be representative of his work. He begins with a clean bottle form to which he applies clay with a spiral pattern, scrafito and slip. A modulated blue glaze, achieved by spraying two glazes one over the other, completes the composition. The whole design enhances the form and follows the mammary-phallic motif that goes through out this work.

Howell is a printmaker. His work consists mostly of small

By Rhea Cole

embossings and intaglio prints. He considers the most representative piece to be, by chance, his largest.

Entitled "Two of Us" the artist's proof is in two hues of brown. Two elderly people float in a field of rectilinear shapes that break up and diffuse symbolic objects around the figures.

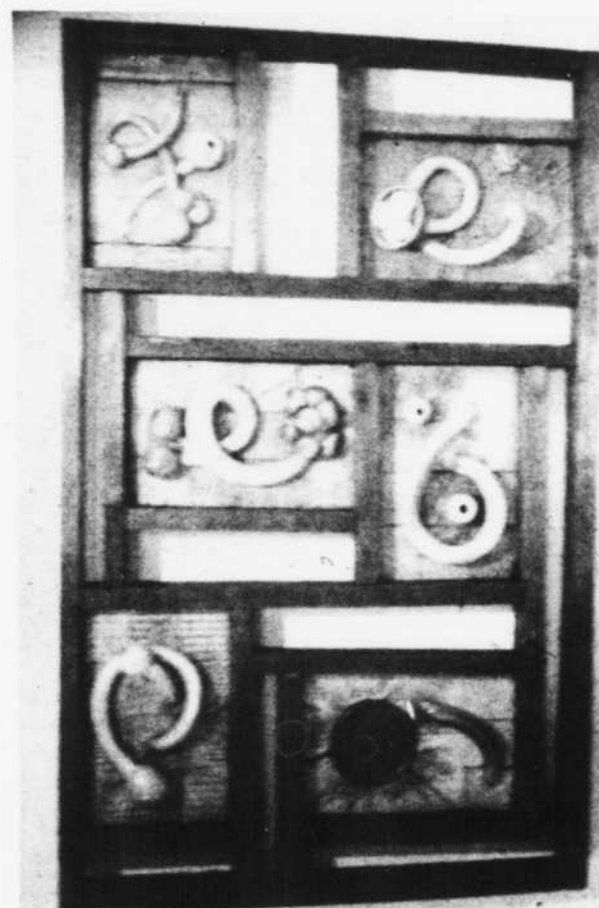
The effect is like layers of faded wall paper. As a result the objects can materialize and disappear into a structure of rectangles at the whim of the mind's eye.

Gayle King did her work in

two fields, painting and jewelry. The paintings are organic and the best are soft forms, sack-like in structure. Perhaps her major interest is in jewelry where she did extensive work in casting.

One of her most interesting pieces is a chalice, a medieval object done in a contemporary form. The bowl of the chalice is a raised copper dish.

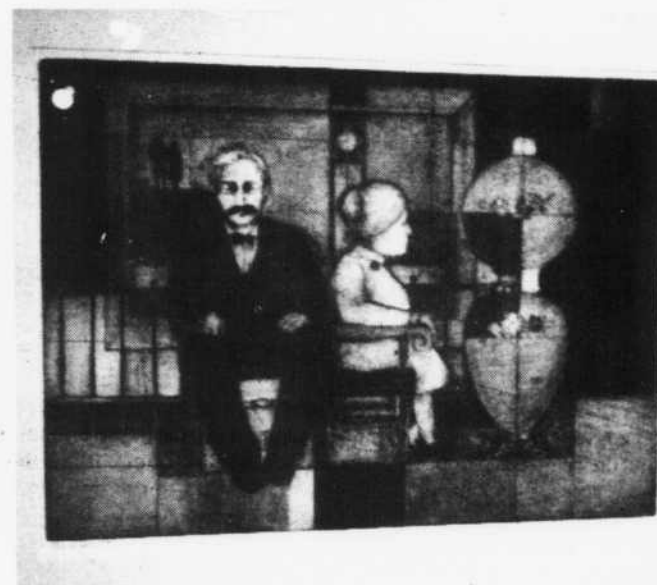
The foot is of puddled steel with a silver cross set with a stone. The refined bowl contrasts with the organic texture of the foot. Somehow the effect is like an object from the Barrow Downs, yet entirely modern in design and execution.



'Symbols'



'Maybe it just sags . . .'



'Two of us'

MOTOROLA
★ **QUASAR** ★
FEATURING

INSTANT TUNING
See Us Before You Buy
100 financing on approval

SERVICE:

- Stereos • Tape Players
- Car Radio • Hi Fi

All makes & models
of T.V. repairs

Open 8-6 — 6 Days Wk.

Day — 896-5960

Night — 896-9086

MURFREESBORO

T.V. & APPLIANCE

1603 Memorial

classified
ads

call 898-2815
or write box 42.

personal

□□Where do university
visitors stay?

UNIVERSITY INN-A best
Western, 211 N. W. Broad.
Shoney's next door. For
reservations call 896-1153.

□□Anyone wishing to have
sewing done call 898-3313.
Will sew almost anything.

for sale

□□BOOK RACK. Thousands
of used paperback books.
Trade or buy. West Side
Square. 893-2726.

□□1963 Falcon convertible
for sale. Manual trans-
mission. Good condition.
Contact MTSU Box 1916.

wanted

□□Anybody interested in
having their face painted
contact Joni Knight at
898-4330.

□□Help! If you drive a
yellow car and witnessed
a wreck on Highway 96,
Monday, November 1, in-
volving a white VW and
a truck. You stopped, but
I need your name so
insurance will repair my
car. Call collect Franklin
794-3588 or write Box 2157.

'Rainmaker' cast seeks antiques

Theatre students are presently searching antique shops in this part of the state to find articles to convert MTSU's Arena Theatre in the Dramatic Arts Building into a southwestern setting of the 1930's for the upcoming production of "The Rainmaker."

The set is divided into three areas with two side sections on raised platforms. At center stage is the large farmhouse of the

Curry family complete with a living room and a kitchen. At one side is the tack room, where Starbuck, the Rainmaker, stays, and at the other end is the sheriff's office. The setting will be supplemented with appropriate furniture and props.

The scenery construction crews are working to make the entire set historically correct. They have used various methods

to meet the challenge of authenticity in set and in costumes.

This is done so that the spectator will easily be able to grasp the mood of the play. Because of these efforts, it should not be difficult to evoke the imagination of the audience in feeling this western atmosphere.

"The Rainmaker" was written by N. Richard Nash, a noted playwright and producer. He was awarded the Karl Gosse Award (German) for "The Rainmaker."

In addition to this, he has also received the Maxwell Anderson Verse Drama Award, the International Drama Award (France), the Prague Award (Czechoslovakia) and the Archer Award (Canada), for his many contributions as a playwright.

"The Rainmaker" will be presented Dec. 9 - Dec. 16, (excluding Sunday Dec. 12) at 8 p.m.

Bell Jewelers

Silver

China

Watches

Crystal

Jewelry

Pins

Charms

Rings

Bracelets

Pictures



Pewter mugs
Expert engraving

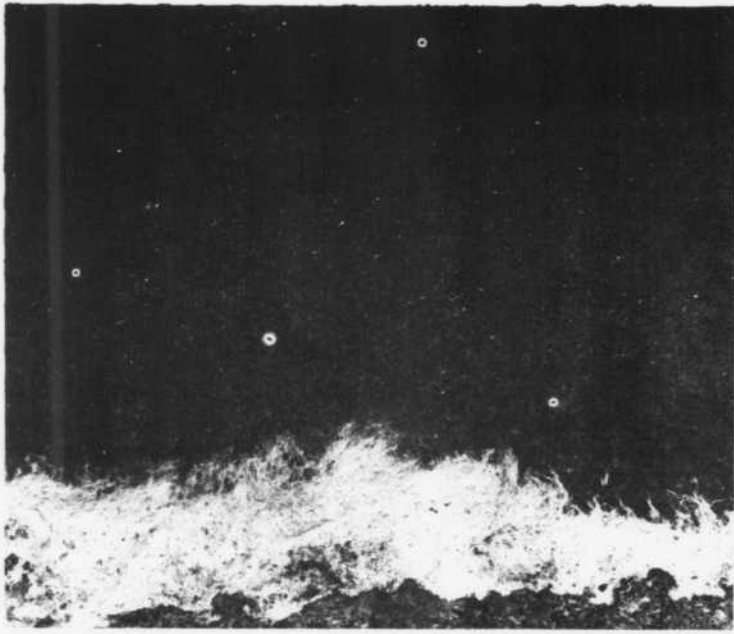
8 N. Side Sq.

893-9162

FLOWERS FOR ALL
OCCASIONS-CALL

RION
FLOWER SHOP

Phone 893-7134
Night 893-4607



Beginning

Frank Martinelli, from Nar-ragansett, R.I., exhibits his photographs including "In the Beginning" at the Photographic Gallery.

Placement office seeks students' future careers

Graduating seniors' major problem is finding a job. The university placement office serves the students and graduates by assisting them in their search for career opportunities.

The primary purpose of this office is the career placement of seniors, graduate students and alumni. The service is also available on a limited basis to students seeking part-time and summer employment, indicated Mrs. Martha Turner, director.

The centralized program is designed to provide current information on occupations and employers, arrange campus interviews with prospective employers, maintain permanent files of credentials and make referrals of available positions.

Students are given an opportunity to investigate a variety of career positions in their chosen fields. The program introduces them to a large number of prospective employers, according to Mrs. Turner.

Employers from business, education and government visit the campus each year from October through May.

"Very few employers inter-

view during the summer," Mrs. Turner said, "and it is important for August graduates to interview during the spring semester."

Prospective graduates of 1972 who are not registered with the placement office should do so immediately, Mrs. Turner added. It is important that a permanent file of credentials be established even for those students who are not seeking employment upon graduation, she noted.

The placement office is a division of student personnel and is located in room 210 in the Cope Administration Building. The staff consists of the director; one secretary, Miss Patsy Miller; and two part-time student assistants.

The service began in 1951 in the division of extension and field services as part of the responsibility of Bob Abernathy.

The first full-time director was appointed in 1964. The office experienced considerable growth during the late sixties when the demand for MTSU graduates reached new heights in the employment market, the director indicated.

Students to select outstanding teachers

Cash awards in the amount of \$1000 will be given to three outstanding MTSU teachers by the MTSU Foundation for the sixth consecutive year.

Selection of the teachers involves a three-fold procedure including nomination, elimination and final selection according to Howard Kirksey, vice-president of academic affairs.

Students, faculty and alumni will nominate faculty members

for the award. Nominations should be filed in the SIDELINES office.

A committee representing the faculty, ASB, MTSU Foundation and alumni association will select from those nominated.

Final evaluation includes a rating sheet used by students and faculty that has been designed for the purpose of selecting the outstanding teachers. Results of the evaluations will be tabu-

lated by computer and announced at the alumni banquet in May.

Those teachers who have been recipients of the award include, Harold Baldwin, Lane Boutwell and Robert Garrigus, 1970-71; Jack Arters, Dalton Drennan and John Patten, 1969-70; Mrs. Or-trun Gilbert, James K. Hunta and Norman Parks, 1968-69; Boyd Evans, Barton McCash and Frances Stubblefield, 1967-68, Gerald Parchment, Harold Spraker and William Windham, 1966-67.

MIDDLE TENNESSEE STATE UNIVERSITY

Student Ballot

Nomination for Distinguished Teaching Award

For outstanding effectiveness in helping students to learn and inquire

I nominate _____

of the _____

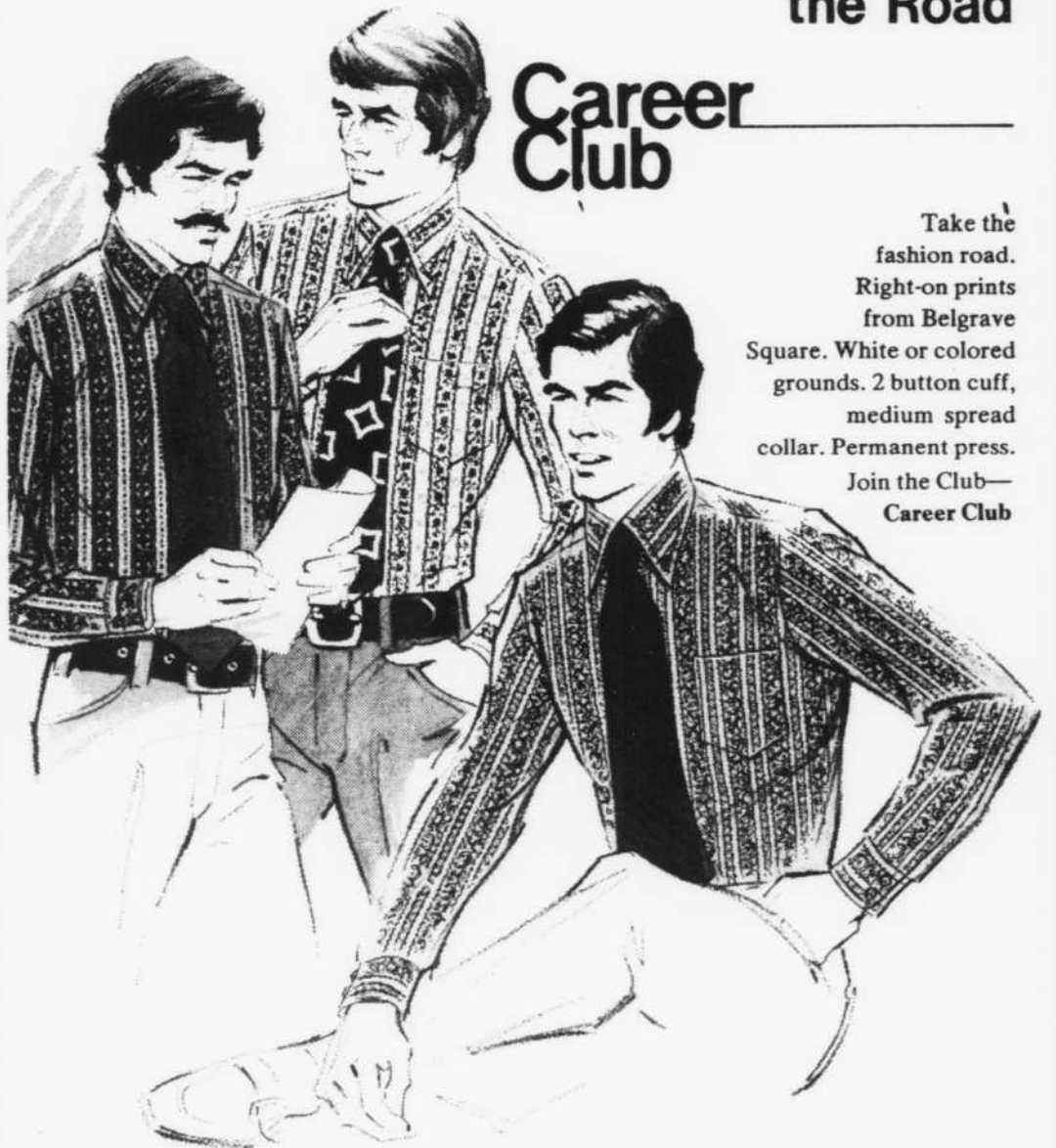
department for the Distinguished Teaching Award.

signed _____

Return to SIDELINES Box 42

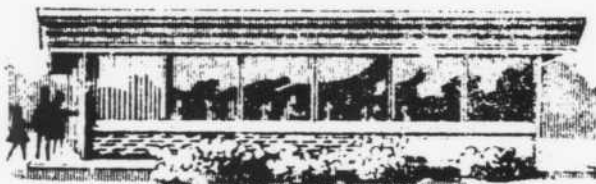
Three For the Road

Career Club



Take the fashion road. Right-on prints from Belgrave Square. White or colored grounds. 2 button cuff, medium spread collar. Permanent press. Join the Club—Career Club

PRONTO (Drive In) RESTAURANT



Steaks — Chicken — Hamburgers
Plate Lunches — Shrimp — Oysters

MON. - SAT.
7:30 A.M. - 11 P.M.

SUNDAY
11 A.M. - 9 P.M.

1211 GREENLAND North of MTSU
Near Tenn. Blvd.
PHONE 893-0383

Specializing In CARRY OUT ORDERS
LEWIS C. HAZLEWOOD, Manager

Fisher's

Store for Men & Boys

We will gladly pay your parking ticket if you receive one while shopping in our store. Open 9:00 p.m. till Christmas

University must have a return to reason

No statements have yet been made by the State Board of Education or President M.G. Scarlett in regard to the current controversy over the president's status.

While rumors have been ever present, no concrete facts have been presented to clarify the situation.

One fact, however, has become increasingly clear and that is that individuals and organizations are using the controversy to further their own ends rather than seeking the facts or merely supporting the university.

The Nashville Tennessean is using the controversy as a means to attack the Dunn administration although it has not yet conclusively shown that the Dunn administration is a cause or a

factor in the controversy.

Similarly, other individuals and groups are finding a good means to further whatever they expound without focusing on the problems between the president and the State Board and their ramifications for the university.

The issue may be no more than what was originally stated in an early news report, that is that the State Board has no confidence in the president.

The reasons for this situation have not been explained, but perhaps it may be enough to say that the president and the State Board can no longer work together in an effective relationship.

While many parties wait for some clarification of the Scarlett contro-

versy, there should be an end to polarization on campus and a return to some semblance of reason.

Vilification of the State Board or any of its members will not provide answers to questions concerning President

Editorial

Scarlett's status, it will not aid the university in any of its problems and it will not bring the university any closer to the "truth" for which the bumper stickers call.

Sudduth gives controversy views

I know sports editors are supposed to be incapable of spelling, let alone thinking, and in many cases I would agree that philosophy is not the realm of the sports writer.

The only reason this is worth mentioning is that, according to fairly well substantiated reports, the State Board of Education of this fair state believes the editorial policy of the *SIDELINES*, a student publication with almost no readership outside the campus community (and I don't mean the city of Murfreesboro), has enough influence in the local political arena to warrant firing a university president.

If a campus newspaper's editorial policy is influential enough to be an issue in the assassination of the character and career of any president of any institution of higher learning, then it surely follows that the policy of the sports editor should be ascertained and applied in the selection of coaches, staff, AD's and SID's.

I can't find a precedent for this action concerning campus sports, but then I can't find a precedent for using campus editorial policy as one of the petty excuses for attempting to ruin a man's career over what is essentially a personality conflict, either.

A new Board of Education? A possible solution, considering the high-handed manner in which they apparently have dismissed MTSU's president, whether they ever make it public until next July, or not.

I would assume the Board feels about me as I feel about them. What about a compromise? Instead of firing them and getting rid of me, why don't we change places for a semester? I am absolutely certain, beyond a shadow of a doubt that I can't screw up the educational process at MTSU any more in a semester than they have in a week.

You see, it's not essentially president M. G. Scarlett who really gets hurt by all this; it is the university. MTSU. That is us, folks.

The few pseudo-activists languishing on campus looking for an issue will immediately have

By Wally Sudduth
Sports Editor

one, should the ultra-conservative, who would surely replace Dr. Scarlett, take office and try to roll back the clock.

The blacks will really have a complaint and won't have to try to make that statue on the side of the University Center into a likeness of N. B. Forrest.

The obvious point of all this is that MTSU has come too far to be destroyed by two-bit politicians attempting to satisfy their ego at the expense of students, faculty and the community, as well.

Open Columns

Republicans cite poor leadership

By Phil Cash
President, College Young Republicans

can perhaps be overlooked, but such action coming from a so-called campus leader is unforgivable.

As to the actions of the Faculty Senate, the faculty of MTSU were notified Monday morning of a general meeting Monday afternoon.

At that time, the faculty was asked to vote on a pre-prepared resolution which, to say the least, was not well worded. To demonstrate how premature this meeting was, the chairman was late because of a phone conversation with the Commissioner of Education, to ascertain facts about the situation, a call that certainly should have been completed before any meeting was called.

Again we regret the circumstances under which this confusion arose, but we sincerely chastise the leaders of this campus for their hasty actions and caution them in the future to use calm and restraint in their reaction to emotionalism, a type of leadership the Republican party has shown in the past and will in the future provide.

In the preceding week, events have occurred to which we feel we can no longer remain silent.

During the latter part of the week of Nov. 15, a series of news reports ignited a succession of rumors concerning President M.G. Scarlett and the State Board of Education. These events we sincerely wish had never occurred.

But we regret more the quality of leadership on this campus in the wake of the confusion which followed.

We criticize in particular the actions of certain leaders of the student body and faculty senate in the actions they took on Monday Nov. 22.

In both cases, the leaders succumbed to the emotions of the moment and called hasty meetings which were premature and ill-thought out.

The MTSU College Republicans were asked to participate in one of these meetings but chose not to do so. It chose, however, to show calm and restraint, to set about to find out the facts before action, a path it seems, no other campus leader chose to tread.

And because it chose not to participate in such a meeting of emotion the College Republicans were subjected to numerous indignations from the members of the audience and the ASB president, Bobby Sands.

The actions of the members of the audience



"WHAT YOU PEOPLE NEED IS MORE AIR-CONDITIONING."

Scarlett gets Spanish support

By Nelda Draughon, Vice-President
Espana y las A'mericas Unidas

We, the members of Espana y las A'mericas Unidas, wish to express our confidence in Dr. M.G. Scarlett as President of this university. We feel that he is doing his job and doing it well because we see tangible evidence of progress at this university. By adding our vote of confidence we join ASB President Bobby Sands in seeking truth to insure justice.

Clark questions object of editorial criticism

To the Editor:

I was greatly disturbed over an editorial in the November 19th edition of Sidelines and a column by Bobby Sands the ASB President, indicating that WLAC-TV in our report on Dr. Scarlett was doing "irreparable damage" to the university.

I firmly believe that had we not broken this story, certain persons in the State Board of Education would have accomplished their goal of firing Dr. Scarlett with very few people having been aware of what was going on until it was a fait accompli.

The first meeting between Education Commissioner E. C. Stimbert and Dr. Scarlett was carried out in complete secrecy. Our report had to be gleaned from persons who had attended the meeting and other sources who did not wish to be quoted.

Our second story came directly from the Board of Education and again it was from a source who did not wish to be identified. I do not think that in broadcasting either story that we abused "basic journalistic precepts by the misuse and lack of attribution".

I wonder how many of the students and members of the Murfreesboro community were aware of the serious problem Dr. Scarlett faced before our two broadcasts. I doubt that many were and

certainly had we not broadcast the stories they would still be uninformed.

ASB President, Bobby Sands indicated through the content of his remarks before a student gathering Monday, November 22nd, the WLAC-TV was somehow to blame for the problem being faced by Dr. Scarlett.

Since Vice President Agnew's now famous Des Moines, Iowa speech it has been rather in style for persons critical of the news media to blame the messenger for the message, but I would have hoped for more enlightened, intelligent responses from the student body president and a university newspaper editorial page.

Chris Clark

Director of News & Public Affairs

WLAC-TV news should be given full credit and praise for bringing the meeting between President Scarlett and Commissioner Stimbert to public attention.

It was not the purpose of the editorial to fault the news network for this revelation but what concerned the editorial board at the time of the writing of the editorial was the simplistic treatment given the reasons behind the report.

On the Thursday newscasts when the story was first aired, it was reported that disagree-

ment with the editorial policy of the student newspaper was responsible for the conflict between the president and the State Board.

While this disagreement may well be a factor, it was the only reason reported on the 10 p.m. newscast of the station. It was known then and as it is now that there are more factors involved in whatever conflict there is between the two parties.

Certainly Clark would agree that on the basis of what was known on Thursday night, the reports given were sketchy and incomplete.

The station even modified its own reports between the 6 p.m. and 10 p.m. newscasts.

At 6 p.m., the station reported that the president had been given a probationary contract at

a lower salary; it changed this at 10 p.m. and on subsequent reports.

Certainly all media, including the SIDELINES, are having difficulty in obtaining concrete facts concerning the conflict and its background. Neither the president nor State Board is making statements.

With an environment of rampant rumors, State Board secrecy and general confusion, hard cold facts are needed. WLAC-TV did provide a service by revealing the conflict, but its initial misinformation has also compounded the difficulty in finding the truth among the rumors. Clark's proverbial "messenger" is being faulted not for his message but for how the message was reported. Editor.

Rolen reviews 'Who's Who'

To the Editor:

In the November 19, 1971 issue of the "Sidelines," 36 MTSU students were named for Who's Who Among Students in American Universities and Colleges.

According to this article, "the selection of a student for Who's Who is based on scholarship, participation in student affairs, and citizenship."

In my opinion, this statement is in error. Since "scholarship" was listed first among the criteria, readers of the "Sidelines" are led to believe that the committee's selection was based primarily on the quality of knowledge and learning shown by these students.

Who's Who Bill No. 90 passed and approved in February 1970 sets forth the criterion for eligibility for Who's Who as follows: "any senior who has a 2.8 overall average OR any senior who the . . . committee feels has made an outstanding contribution to MTSU."

The latter statement implies that any senior student regardless of grade point average may

apply and, if approved by the selection committee, will be considered along with other applicants.

Section III-2 of the Who's Who Bill emphatically states that "overall grade average" is "only a prerequisite for application."

"The name and grade average of each application will be covered with a strip of paper. . . A student who does not have a 2.8 average, only his name will be covered."

The committee must then use the following information in selecting students for Who's Who Among Students in American Universities and Colleges: Clubs participated in, Fraternity or Sorority participated in, Committees served on, Offices held, Honors awarded, Athletic Achievements, Community services in connection with MTSU, and others.

Obviously, scholarship as customarily defined has little or no influence in the selection process.

Charles Rolen
Chairman,
Department of Accounting

Letters to the Editor

'Superstar' lacks reality, accuracy

Editor's Note: The production of "Jesus Christ, Superstar" was presented last night; this letter concerning the production was received last week and is printed by the request of its author. Publication schedules and holidays made earlier publication impossible.

To the Editor:

The rock opera "Jesus Christ, Superstar" is scheduled for presentation on the MTSU campus on Tuesday, November 30. Many will attend and will be entertained and moved.

This is an exciting work and tells an interesting story; however, it is not the story of Jesus of Nazareth. It is an interpretation with a very definite bias, as the writer and composer have readily admitted.

It seeks to emphasize the humanity of Christ and is, therefore, inadequate. It is impossible to separate the human and the divine in the person of Jesus Christ.

The rock opera is not reality. Reality is found in the narratives of Christ's disciples and other early Christians. You will find the Bible is one of the most reliable original historical sources available.

The resurrection of Christ is completely ignored in the rock opera. Much testifies to the real-

ity of this event. First, the founding and growth of the Christian church, despite the fact that its founder had been crucified, is remarkable.

Even Hugh Schonfield, author of The Passover Plot, could not rationalize this extraordinary growth; therefore, his next book was Those Incredible Christians.

Second, the zeal of a small group of transformed disciples, most of whom had been cowardly turncoats at the Crucifixion, is hard to explain away. Third, the testimony of the New Testament writers and the church fathers to the resurrection is strangely consistent.

Fourth, the personal encounter of millions of people with the risen Christ during the past 2,000 years cannot be ignored.

I have heard the entire recording of "Jesus Christ, Superstar" twice (and selections from it a number of times). I came away both times with an empty feeling. The real Christ did not remain in that tomb. Many can join me in that testimony.

So, attend the rock opera, if you desire. Listen, then find out for yourself. Please don't accept it at face value or as an accurate account of the passion of Christ.

Ircel Harrison
Director of Baptist student ministries

SIDELINES

Office, SUB 100 Box 42 896-2815

Jim Leonhirth—Editor-in-Chief
Dennis Phillips—Business Manager

Managing editors.....	Becky Freeman,
	Diane Johnson
News Coordinator.....	Mike West
Feature editor.....	Carol Norville
Sports editor.....	Wally Sudduth
Copy editor.....	Dennis Frobish
Asst. News Coordinator.....	Linda Killen
Asst. feature editor.....	Peggy Smith
Asst. sports editors.....	Doug Williams,
	Avery Smith
Special reporter.....	Shannon Trolinger
State reporter.....	Larry Harrington
Sales coordinator.....	Maureen Divine
Advertising managers.....	Julia Little,
	Debbie Polk
Circulation manager.....	Bobby Sims
Office manager.....	Dennis Deathridge
Adviser.....	Anne Nunemaker
Production supervisor.....	Glenn Himebaugh

The SIDELINES is published every Tuesday and Friday during the fall and spring semesters by the students of Middle Tennessee State University in Murfreesboro, Tennessee, and is represented by the National Educational Advertising Service, Inc.

The editorial comments reflect the editorial policy of the SIDELINES as determined by the members of the editorial board. Editorial views

do not necessarily reflect the opinion or position of journalism advisers or Middle Tennessee State University and its students, faculty and administration.

The views exhibited through the columns on the editorial pages do not necessarily reflect any opinion other than that of the author.

Subscription rates for the bi-weekly publication are \$2.50 per semester.

Local grididders sign for scholarships

Coach Charlie Butler has signed two area high school grididders to football grants-in-aid.

James Pryor, an All-Class AAA and All Central Tennessee Conference running back and defensive end from Franklin County was the first to ink with the Raiders. The 205 pounder runs the 40 yard dash in 4.8 seconds but will probably be used as a defensive end or linebacker, according to Butler.

Pryor joins six other former Franklin County players at MTSU. They are cornerbacks Raymond Bonner and Ed Miller, tackle Jimmy Moss, guard Larry Sawyer, flanker Randall Miller and running back Ronnie Martin.

Robert Ware, a bonifide 9.5 sprinter from Cleveland, Tennessee, is the other signee. The 185 pound running back has some fantastic statistics in his three year career. They include 303 rushes for 2183 yards and 26 TD's. This comes out to over seven yards per carry and a career total of 170 points, including 84 this season.

Ware has twice been named to All-County and All Tri-State teams. "We feel that Robert is one of the real blue-chip athletes in the state and we are delighted to get him," stated Butler.



When you know it's for keeps

Happily, all your special moments together will be symbolized forever by your engagement and wedding rings. If the name, Keepsake, is in the ring and on the tag, you are assured of fine quality and lasting satisfaction. The engagement diamond is perfect, of superb color, and precise cut. Your Keepsake Jeweler has a selection of many lovely styles. He's in the yellow pages under "Jewelers."

Keepsake®
REGISTERED DIAMOND RINGS



Rings from \$100 to \$10,000 Trade Mark Reg. A. H. Pond Co.

HOW TO PLAN YOUR ENGAGEMENT AND WEDDING
Send new 20 pg. booklet, "Planning Your Engagement and Wedding" plus full color folder and 44 pg. Bride's Book gift offer all for only 25¢. F-71

Name _____

Address _____

City _____

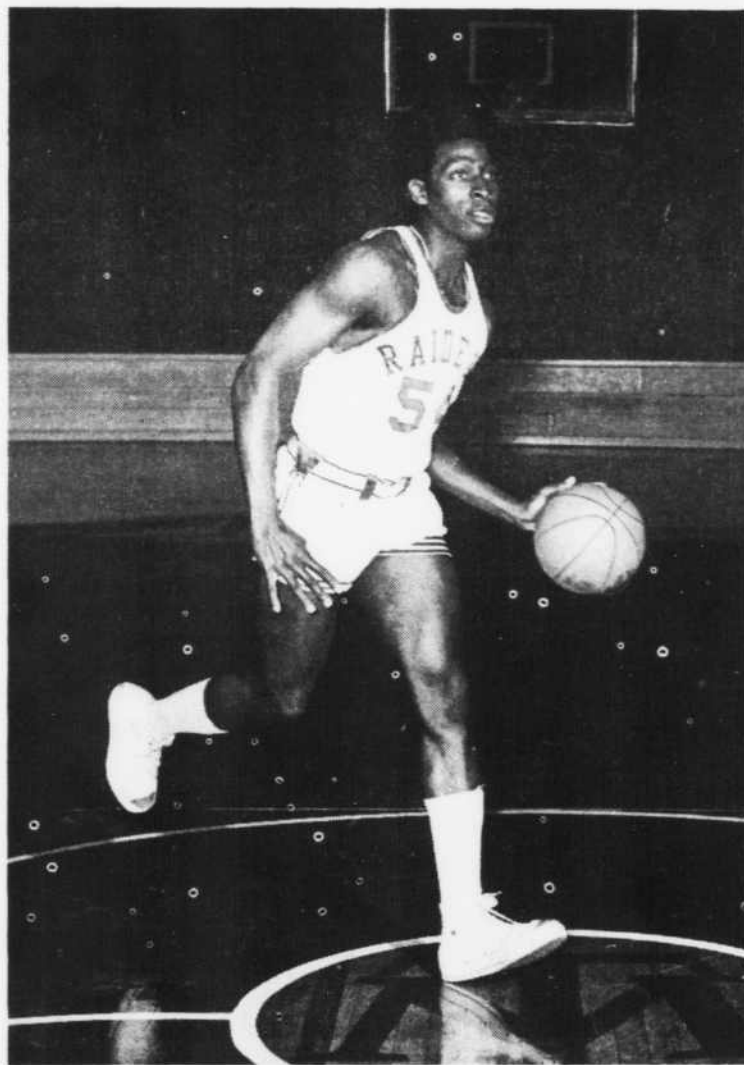
Co. _____

State _____

Zip _____

KEEPSAKE DIAMOND RINGS, BOX 90, SYRACUSE, N.Y. 13201

Cagers to open against Wesleyan



Starter

Herman Sykes practices for his starting position in Thursday night's game against Wesleyan.

The Blue Raiders will begin their 1971-72 basketball season by hosting Tennessee Wesleyan Thursday night at 7:30 in Alumni Memorial Gym.

"Herman Sykes will start at guard," said Jimmy Earle, head coach. "Everything else is up for grabs", he commented.

Sykes, who led the team in scoring last season with a 17.0 average, is the only sure starter that Earle would name prior to game time. Other good bets, however, are Chester Brown at center, Mason Bonner at the other guard opposite Sykes, and either Nick Prater, Dave Fesko or Terry Johnson at the forward slots.

Jim Drew, a junior guard from Springfield, Ill., would normally be starting opposite Sykes, but he twisted his knee in practice a week ago, and will miss most, if not all, of the opener.

Brown, the likely center, is a 6-10 junior from Clanton, Ala., and is being counted on to take up the rebounding slack left by the departed Ken Riley, a two-time All-OVC forward.

Bonner, a 6-0 sophomore guard from Tuscaloosa, Ala., averaged 24 points per game with the freshman team a year ago, and is ready to add fire-power to the varsity.

Prater, a junior from McMinnville, averaged 9.0 per game last year, and was a starter for the last half of the season. He is a fine shooter, but is only 6-3.

Fesko is a junior college transfer from Morristown, Pa. He is an excellent shot and lends good size with his 6-5 1/2 frame. Terry Johnson is a 6-3 senior from Shelbyville who has seen limited action in the past two years.

"We could be in a lot of trouble with Drew out, especially if we have first-game jitters," Earle declared. "Wesleyan has already played six games, and they can shoot the eyes out of the bucket."

Wesleyan is paced by center Donald Dodgen who averaged over 20 points per game last year. He scored 26 points against MTSU in Athens last season.

The highly-touted MTSU freshmen will open their season, also. The Raider yearlings will host the Belmont junior varsity.

Classified Ads Do Work!

How do you buy one?

print your name, the dates to run the ad, the words of the ad, and mail it to MTSU Box 42 or call 898-2815.

How much does one cost?

Words	Daily	Weekly
1-15	.75	1.00
16-25	1.00	1.25
26-35	1.25	1.50
36-45	1.50	1.75
46-54	1.75	2.00

Give A Gift Of Music From The Music Shop

It will bring pleasure that will last throughout the coming year.

See us for
Guitars--Amps--Ukes
Fisher Stereo Systems
Magnavox Stereo, Tape And Televisions
Records And Tapes (We feature a wide selection of all kinds of music.)

Store hours--now until Christmas--
Open 8:30 a.m. Close 9:00 p.m.
daily except Sunday

Park free in our parking spaces behind the store.

The Music Shop

"Everything In Music"

102 E. Vine Street
(one block south of the square)

OVC names Inglis, Oldham, Shawan to honor team

1971 OVC All-Conference Football Teams

OFFENSE

Position	Player	College	Yr	Ht	Wt
Wide R.	John High	Morehead	Sr.	5-10	175
Tight E.	James Wilson	Eastern KY.	Sr.	6-1	220
Tackle	Terry Kokinda	Western KY.	Sr.	6-1	210
Tackle	Mike Defino	Tenn. Tech	Jr.	6-4	220
Guard	John Chuy	Tenn. Tech	Sr.	6-3	250
Guard	Jim Inglis	MTSU	Sr.	6	200
Center	Bill Sykes	Western KY.	Sr.	5-10	210
QB	Leo Peckenpaugh	Western KY.	So.	6	180
B	Rick Fisher	Murray	Jr.	6	191
B	Jeff Axel	Tenn. Tech	Jr.	6	215
B	Jimmy Brooks	Eastern KY.	Sr.	5-10	180
Pl K	Stan Watts	Murray	Sr.	6-2	190

DEFENSE

Position	Player	College	Yr	Ht	Wt
End	John Matlock	Tenn Tech	Sr.	6-1	200
End	Jim Hughes	Austin Peay	Sr.	5-10	190
Tackle	Bonnie Sloan	Austin Peay	Jr.	6-5	265
Tackle	Terry Thompson	Western KY.	Sr.	6-2	220
LB	Jim Youngblood	Tenn. Tech	Jr.	6-3	235
LB	Frank Head	Murray	Sr.	6-2	225
LB	Jim Barber	Western KY.	Sr.	5-11	195
B	Ray Oldham	MTSU	Jr.	5-11	200
B	James Porter	Eastern KY.	Jr.	5-10	180
B	Robert Morehead	Western KY.	So.	6-2	190
B	Mike Rucker	Morehead	Sr.	5-10	190
P	Mike Shawen	MTSU	Fr.	6-2	210

MTSU players on the second team were Charlie Holt, Kenny Nolan, John Harris, Greg Gregory, Ray Bonner and Ed Miller. Jesse Carter and David Stewart were honorable mention for the Raiders also.

Western Kentucky dominated the coaches' All-OVC football team with six first team picks followed by Tennessee Tech with five on the honor squad.

MTSU had three first All-OVC selections along with six second team selections and two honorable mentions. Murray's Rick Fisher, leading rusher in the league, was the only unanimous choice while Tech linebacker, Jim Youngblood, was named on seven of eight possible ballots.

Jimmy Brooks of Eastern is the only player to be named for three consecutive seasons, while MTSU's Mike Shawen was the only freshman to rate first team acclaim.

Tennessee Tech's Don Wade was named OVC Coach of the Year and his ace linebacker, Youngblood, was voted Defensive Player of the Year. Murray's Fisher is the coaches' choice as Offensive Player of the Year after rushing for 1078 yards in 224 tries for a 4.7 average per carry.



Honored

The Blue Raider All-OVC players include Jim Inglis, co-captain of this year's team.

Merle Norman
Cosmetics

No. 1
Penney Plaza

EAST
MAIN
MARKET

Your FAVORITE
Beverage Always
Available

MTSU
STUDENTS
WELCOME

Mon. thru Sat.
8:30 a.m.—10:00 p.m.

Spaghetti
Special All this Week

any kind, 70¢

thru Sunday

J & G

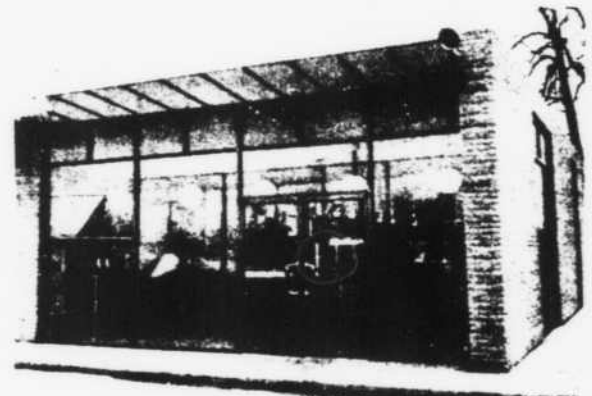
Features

16 Different Varieties of Pizza

also

Italian Spaghetti

Char-broiled Shiskabob



Open 7 Days a Week

Sun...Thurs. 11 a.m.--12 midnite

Fri. & Sat. 11 a.m.--1 a.m.

We Deliver (\$2.00 minimum)

Phone 896-5100 1002 Memorial Blvd.

- Big Hamburger
- Big Cheeseburger
- Ham Sandwich
- Hot Dog
- Garlic Bread
- Salad

Raiderscope

'Sports nut' demands equal t.v. treatment

Seems like every talk show or laughter you tune in these days has a pseudo-comedian doing a take-off on the "sports nut" husband who spends his weekends glued to the TV set.

Somebody forgot to balance the format with an equal time sequel depicting the average American housewife transfixed from five to eight hours a day, five days a week, while their collective brains turn into a gray, soapy sludge.

Just to put things in perspective for the poor husband who will invariably catch hell as the holiday sports cavalcade begins, let's look at the psychological aspects of this phenomenon. (This ought to draw a crowd).

The most blatant symptom evinced by the female in this instance is "Peeping Tomism." She doesn't have the nerve to actually pry into other people's affairs to the extent that the hare-brained, overblown vicissitudes of the soapies allows her to do on an everyday basis.

The male, on the other hand, is only trying to rid himself of the frustration accumulated

By Wally Sudduth
Sports Editor

while attempting to pay for the conveniences which allow the wife time to have her brain washed every day.

Sports represents a vicarious avenue of escape much more socially acceptable than, say, beating your wife or spending the food money on booze. Both of which are very tempting alternatives about that time every weekend when you hear, "Are you about to watch another stupid old ball-game?"

Speaking of those old ball-games, the Nebraska-Oklahoma tilt was everything anyone (a pure fan with no bias that is) could ask for. This leads to some interesting conjecture.

Since Alabama beat Mr. Heisman and friend, a potential national championship matchup can now ensue with the Crimson Tide getting a shot at the best team in the country.

Knowing, somewhat, the psychology of Herr Bryant, I would not discount the possibility of that mantle coming to rest again upon the shoulders of "The Bear".

Basketball season on the horizon! The Raiders open tomorrow night against Wesleyan. The most notable thing about this game from my viewpoint is a chance to chat with an old buddy, Al Amburn, now an assistant coach and scout for Wesleyan.

Al and I beat each other on the head a few times while playing service ball in Japan, he for the Air Force and myself for the Army.



Wally Sudduth

Morehead wins offense honors

Morehead wound up the season as the OVC total offense and passing champs with 321.5 and 159.6-yard averages per game respectively. MTSU finished sixth in both categories.

Tennessee Tech led the rushers with 228.5 yards a game while the Raiders finished in third place, having rushed for 172.5 yards per contest.

Western led in total defense and passing defense, giving up 151.1 yards a game overall and only 57.7 through the air. Morehead was best against the rush giving up only 64.1 yards per game. The Raiders were third in total defense, second in pass defense and fourth against the rush with figures of 223.2, 81.2 and 142 yards per game in the respective categories.

Individual total offense leaders

were Dave Schaetzke of Morehead with 1353 yards and a 150.3 average in nine games and Richard McGlothlin of East Tennessee with 1152 yards and a 115.2 average per game. Melvin Daniels finished in the fifth spot with 987 yards and an 89.7 average for the Raiders.

The passing leaders are just reversed with McGlothlin the leader with 1338 yards (he lost 186 yards rushing to account for his offensive total) to 1127 for Schaetzke. MTSU's Daniels was the sixth best passer with 585 yards.

Eastern's Jimmy Brooks led the league in scoring with 54 points on nine TD's while Kenny Nolan of MTSU with 51 points, all by kicking, was second in total scoring. Nolan was first in points per game with a 5.6 average followed by Brooks with 4.9.

MTSU dominated the conference kicking statistics as Mike Shawen won the punting crown with a 38.5 average on 74 punts while Nolan edged Stan Watts of Murray 51 points to 48 points and averaged 5.6 points to Watts' 4.8 per game average.

OVC Stats

FINAL STANDINGS

	Conf. W-L-T	All W-L-T
Western Kentucky	6-1-0	8-2-0
Tennessee Tech	5-2-0	8-2-0
MTSU	5-2-0	7-4-0
Morehead	4-3-0	7-3-0
Murray	3-3-1	5-4-1
Eastern	3-4-0	6-4-1
Austin Peay	1-6-0	2-8-0
East Tennessee	0-6-1	0-9-1

LETTERPRESS AND LITHOGRAPHY



Murfreesboro Printing Co.

• ONE STOP PRINTING SERVICE

JOHN R. BONNER
MANAGER
TELEPHONE 893-9480

510 MEMORIAL BOULEVARD
MURFREESBORO, TENN.

FAMOUS
BRANDS

FACTORY TO YOU

DISCOUNT
PRICES



"Stacks"

A new high
in fashion boots

Yes, fashion is really stacked here! These boots are tall in comfort, too. And that makes 'em tops in value. A 27.95 value at...

\$19.90

MEMORIAL VILLAGE

OPEN 9 a.m. thru 9 p.m.

MON. thru SAT.

SUNDAY

1 p.m. thru 6 p.m.

"S"

Happy
BURGER



Hamburger

Special
Thurs.

Buy 1
And Get
One
FREE

Baird Lane Near MTSU
Jackson Heights Plaza

Professors receive offices

Two MTSU faculty members were honored by the Tennessee Academy of Science at a recent meeting here.

Gerald Parchment, biology professor, was named president-elect of the academy. He will direct the 500 member body during 1972-1973.

Clay M. Chandler, also of the biology department, was named chairman of the zoology section of the academy. Chandler succeeds H. Malcolm Owen of the University of the South.

Parchment received his B.S. degree from MTSU. He received his M.A. from Peabody College and his Ph.D. from Vanderbilt. The Cumberland city native also has done graduate work at the University of Tennessee.

He is included in "Outstanding Educators in America." Parchment also received MTSU's Distinguished Teachers Award.

Chandler received his B.S. degree from Bethel College. He earned his M.A. at Peabody College and his Ph.D. at Indiana University.

Chandler has contributed extensively to scholarly publications in his field. His "Investigation of Indiana Lakes and Streams" is a recognized work.

The Milian, Tenn. native is a member of the American Association for the Advancement of Science, the American Institute of Biological Science and the American Society of Zoologists.

He also belongs to the American Association of Limnology and Oceanography and to the Society of Sigma Xi.

Would we change our tune for Christmas?

You bet. Anything to bring you the absolute latest in music gear. See our collection. Everything's here, from the tiniest of radios, up to full-fledged stereo systems. The changes are many, but the prices are very low. Like Christmas, that's one tune we'll never change.

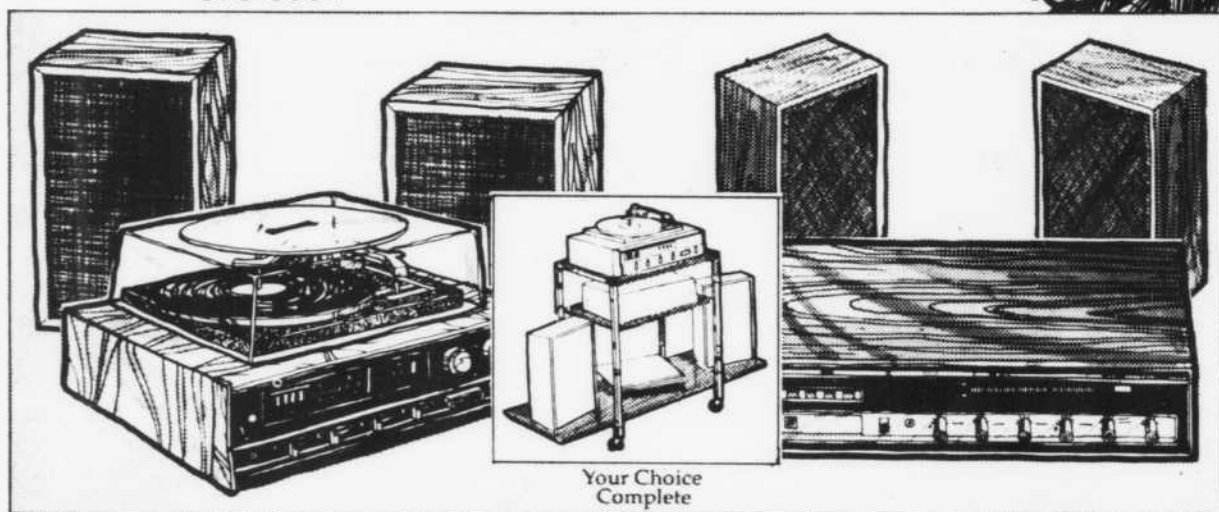
ZALES®

JEWELERS

My, how you've changed

MERCURY PLAZA 10 a.m. to 9 p.m.
896-0504

Elegant
Gift Wrap
At No Charge



Lloyd's stereo system, AM-FM radio, 4-speed record changer, 2 satellite speakers, full size record changer, wood-grain cabinetry and deluxe stand.

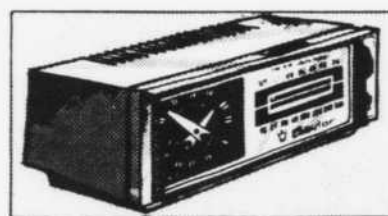
\$124⁹⁵

Your Choice
Complete

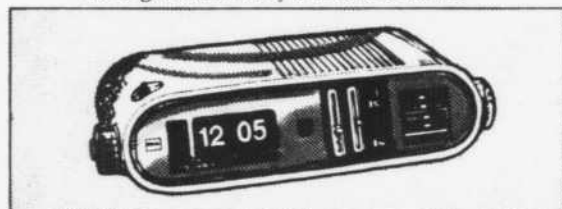
Lear Jet stereo system, AM-FM radio, 8-track stereo tape player, 2 speakers; full complement of stereo inputs, outputs and controls; deluxe stand.



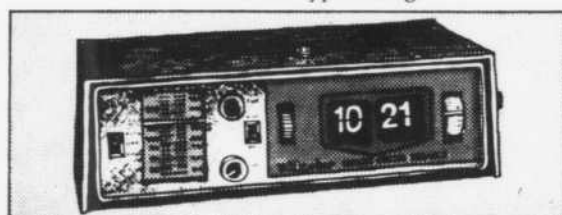
Panasonic Ball 'n Chain radio, AM, bright colors, battery power. **\$10⁸⁸**



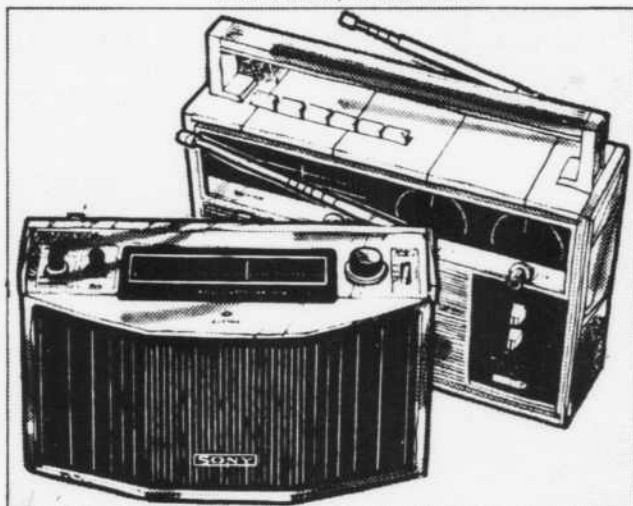
Baylor AM-FM clock radio, instant sound, choice of colors. **\$19⁸⁸**



Toshiba AM-FM digital clock radio, automatic 24-hour alarm, drum-type tuning. **\$49⁹⁵**



Baylor AM-FM digital clock radio, lighted dial, simulated wood grain, solid state. **\$29⁸⁸**



Sharp 6-band portable radio, has AM, FM, marine, air, and 2 police bands. Batteries or house current. **\$79⁹⁵**

Sony stereo radio, 3 self-contained speakers produce a widely separated stereo sound. Batteries or house current. **Your Choice**



Baylor AM-FM radio with cassette recorder. Batteries or electricity. Includes microphone, blank cassette, earphone plug, batteries. **\$59⁹⁵**

Charge it!
Zales Custom Charge • Zales Revolving Charge

Layaway now for Christmas.

MERCURY



PLAZA

Shopping
Center

FREE BUS

Leaves MTSU

5:30 p.m.

6:30 p.m.

7:30 p.m.

FREE BUS

Leaves Mercury Plaza

6:25 p.m.

7:25 p.m.

9:10 p.m.



SHIRTS by

- Arrow
- Creighton
- Manhattan
- House of York



IN Solids, Stripes,
White on White and
The Sculptured De-
sign

Up-To-Date Collar
Styling.

FROM

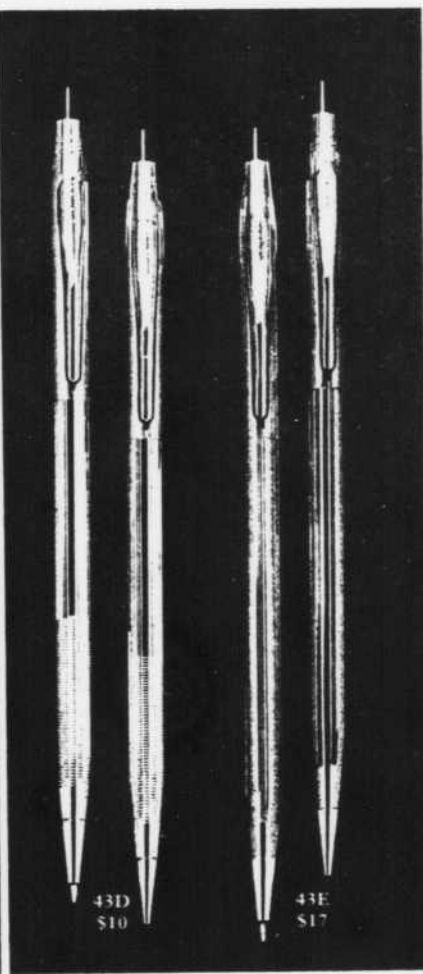
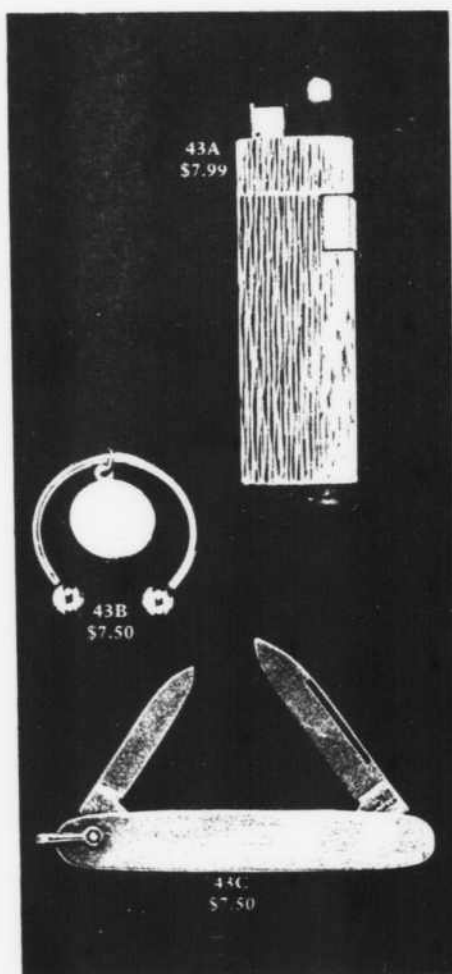
\$7⁰⁰ to \$15⁰⁰

Billingsley's
APPAREL FOR MEN

Genuine leather

Take your pick...
every one is fine qual-
ity, soft, rich, genuine
leather. Expansion
straps, the harness....
or the tug'n tie speed
lace. Bonded, knit-fit
linings.
\$20 to \$25.

Southern
shoes



ZALES
JEWELERS



Visit Our "La Terrace"

For

Exclusive

JR. Petites

By "Rag Dolls"

\$24⁰⁰



Spaghetti Dinner

Tues. & Thurs. nights

Only 99¢