



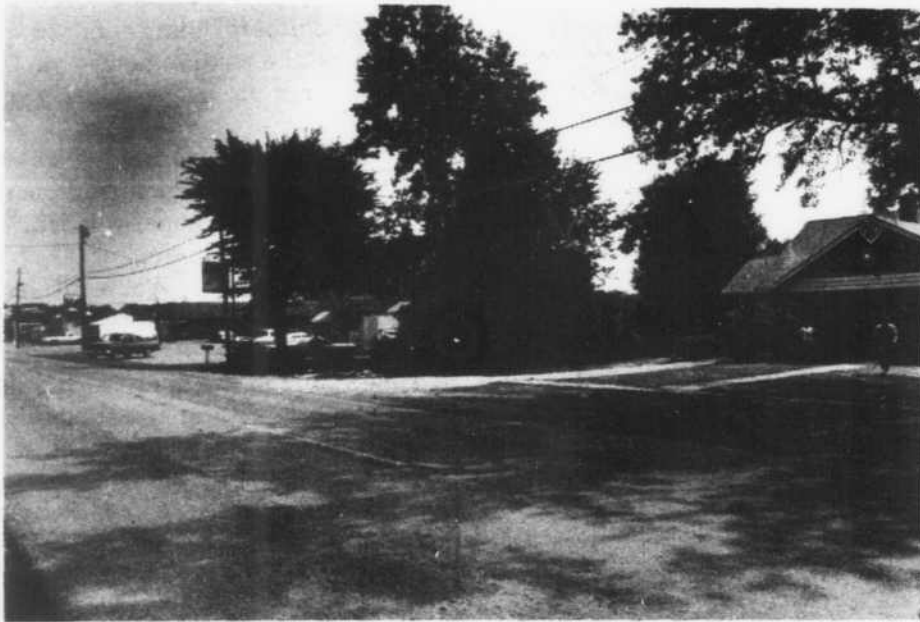
SIDELINES

Middle Tennessee State University

Friday, September 2, 1977

Vol. 51 No. 9

Fraternity handed setback in zoning dispute



Local authorities have voted to reconsider an earlier decision allowing members of Sigma Phi Epsilon to establish a fraternity house in a residential area, according to Charlotte Gardner, chairman of Murfreesboro's Board of Zoning Appeals.

Members of the fraternity leased a house at 1916 E. Main St. this summer and received approval of their enterprise from the zoning board on Aug. 9.

At a meeting of the board Tuesday, a debate ensued between attorneys representing the fraternity and a group of area homeowners working to block approval of the fraternity house. Board members thereafter voted 3-1 to reconsider the action.

Local residents took action by attempting to obtain an ordinance forming a route of appeal beyond

the zoning board itself. The move was not recommended, though the board chose to rehear the case.

The ordinance amendment would worsen matters and the board's regulations do not adequately provide for denying fraternities, according to City Councilman Ewing Smith, stating that the appeal ordinance would open "a Pandora's box" of problems.

Board members will meet again Thursday, Sept. 8, after Don McClaran, owner of the property in question, has obtained counsel.

McClaran refused to comment on the matter.

Attorney Steve Waldron, representing the homeowners, claimed locating the fraternity at that house would cause parking and traffic problems and excessive noise; in addition, he argued that the house is not connected with the city sewer system and could cause problems

in the future.

Murfreesboro Police Sgt. Hiram Lester, one of the area's homeowners, stated that he had observed two occasions of violations of the board's parking directives at the fraternity house.

"There have been at least two incidences of cars parked on the street. We had the understanding that there would be no parking on the street," Lester said.

Attorney John Landsden, representing the fraternity, argued that the board's original approval was binding, as were contracts and

leases involved in obtaining the house.

"I'd like you to stand your ground," Landsden said. "There is no reason for you to change your minds."

He added further that the property was zoned commercially and by locating the fraternity there would possibly prevent the building of an "amusement center" or beer tavern which would cause greater traffic and noise problems.

The fraternity has 31 members, six of which are now living in the house.

Enrollment may top 9,700

by Ben Eubanks

Enrollment at MTSU this year is likely to go over 9,700 students this year because of a 12 per cent increase in freshmen students.

Final figures are unavailable because of late registrants, but Cliff Gillespie, Dean of Admission and Records, said that "with 150 students added on Wednesday and Thursday, we'll probably have over 9,700."

Gillespie credits the growth in the freshmen class (an increase of 200, from 1,743 to 1,855) to improved recruiting by the faculty, ASB and other organizations which took an active part such as bringing high school groups on campus last spring.

Gillespie expressed concern over the fact that the number of returning students has dropped off. "Of the possible number of students

who could come back this year, fewer came back than in previous years."

This problem is not unique to MTSU, according to Gillespie. All Tennessee schools are affected. The state Board of Regents will complete a study this fall of the reduced number of returnees.

MTSU's problem may be due to two factors, according to Gillespie. Some students leave school to take jobs. Other students are listed in the returnee records but are actually housewives and workers who only take a class now and then.

Graduate and transfer students contributed to the increase from last year's enrollment of 9452. New students entering the graduate schools increased by 38 percent, from 245 to 338. Transfer students, mostly upperclassmen, increased by 2.2 per cent.

Fraternity denies claims

"We haven't done anything yet," Mike Bass, chapter president of Sigma Phi Epsilon fraternity, said regarding the protests of homeowners opposing the establishment of a fraternity house in their neighborhood.

Several parties have been held at the house since the location was approved by the zoning board Aug. 9, none of which were excessively loud, Bass claimed.

"They (the homeowners group and their attorney) cannot legally

stop us now without new evidence," Bass added.

In regard to their communication with landlord Don McClaran, Bass stated "we haven't talked to him since he obtained counsel."

Bass and other fraternity members refuted the charges of inevitable traffic and parking problems and excessive noise named in homeowner's complaints.

Concerning the outcome of the current case before the zoning board, Bass replied, "how will it come out? I don't know."

Accident injures chairman

Dr. Edward M. Kimbrell, chairman of the Department of Mass Communications, was injured when his car collided with another car Wednesday night on Sulphur Spring Road just outside



Dr. Edward Kimbrell

Murfreesboro. Kimbrell, 37, was given stitches for cuts on one of his legs and released after receiving emergency treatment at Rutherford Hospital.

His daughter, Amy, was taken by ambulance to Vanderbilt Pediatrics Hospital in Nashville where she underwent surgery to remove bone chips from her skull.

Kimbrell's wife, Sally, and his son, Dow, were also riding in the car but were uninjured.

Kimbrell came to MTSU in 1971 and became chairman of the Department of Mass Communications when it was formed in 1973. He was named Outstanding teacher of the Year for 1975-76.

The Kimbrell children are students at Campus School.

Off-campus utility expense intrudes on happy homes

by Steve Miller

If you are trying to secure the comforts of home for an off campus apartment, you may find the expense is more than you had anticipated.

South Central Bell requires a \$50 deposit if you have not previously had telephone service in your name. If you have had telephone service before and have a good credit record, no deposit is required. Hughey King, manager of the Murfreesboro office of South Central Bell, said that if service is continued for one year and the customer has a good credit record, the deposit will be returned to the customer with 6 per cent interest.

If service is discontinued before one year's time, the deposit is deducted from the final bill and the remainder is refunded to the customer. In all cases of bad credit, including late payment, the deposit goes toward payment of the bill.

In case you can't afford the deposit, there is still a way to get telephone service. Your parents can be responsible for your bill if their credit is good.

South Central Bell offers a special service to students living in dorms. The Student Telephone Account Number (STAN) is a special card that can be obtained free of charge from the telephone company. The STAN card allows a student to make long distance calls from his dorm room and charge them to his account. The rates are the same as for any residential phone.

The Murfreesboro Electric Department also requires a deposit before giving electrical service. Mrs. Joyce Williams, office manager said that if the customer has

either electric heat or air conditioning, a \$50 deposit is required. All other residential users only need a \$25 deposit. There is no way you can obtain electrical service without the deposit.

According to Williams, the deposit is held as a guarantee of payment but is returned to the customer after three years of continuous service if the credit rating has been good.

Murfreesboro Electric's rate is based on the TVA rate scale. There is a minimum charge of \$2 per month. The actual power rate is 1.697 cents per kilowatt hour plus an adjustment addendum of .228 cents per kilowatt hour, plus a fuel and power cost, which can change monthly. The company offers no special rates to students.

Murfreesboro's Water Department requires a \$20 deposit to establish water service. Virginia Hill, a clerk at the department, said the deposit will be returned when the customer closes his account. It can be transferred to another location if the customer moves.

If you cannot afford the deposit then you will not be able to get water. If a customer moves and has not paid all he owes, the company will keep the deposit to cover the cost. If a customer moves and has had a good credit rating, then the deposit is returned.

Water department rates are \$3 for the first 300 cubic feet plus 26 cents per 100 cubic feet. An additional 55 per cent of that total is added to the bill to cover the cost of sewer service.

No special rates or services are offered to students.

Non-majors offered night painting class

A special evening painting class for non-art majors will be offered again during the fall semester by the art department.

Sessions will be held from 6 to 8:40 p.m. on Tuesdays and Thursdays in the main painting room in the Art Barn, according to David LeDoux, associate professor of art and instructor of the course.

In addition to regular course activities, plans are to include weekend sketching trips, a professional evaluation of past work, and visits to and discussions of exhibitions on view in the Art Barn galleries.

The course carries three hour's credit, and the first class meeting, an organizational meeting, will be held in the main painting room of the Art Barn at 6 p.m. on Tuesday, Aug. 30.

Interested persons may call the registrar's office about registration procedures and Nancy Dickson at the Art Department for further details about the class, LeDoux said.



SERVICES

Term papers, theses, reports, copies while you wait. Typing service available. The Copy Shop, 431 N.W. Broad. 890-2426.

RENT

Apartments for rent. One or two bedrooms at Pine Park Apartments. Call 896-4470.

One or two bedroom apartments now available at Holly Park. Call 896-0667.

NOTICE

MCAT-DAT Review Course take in Atlanta in 3 to 5 days. P.O. Box 77034, Atl., Ga. 30309 Phone (404) 874-2454.

Free puppies-black lab-Irish Setter mix. Good-natured, intelligent, wonderful pets. Call 893-8526.

JOB OPENINGS

Full and part-time jobs available at 24 hr corporation. Special hrs. for college students. Excellent paid benefits. No typing required. In the Greerhills area. Call Mrs. Garrett at 385-0564. Interviews until 9:00 p.m.

Part time and full time positions available. Mornings and lunches, weekends, nights. Apply at either Sir Pizza locations.

Part-time work in Smyrna area. Male student to work in mornings or afternoons around schedule. Call 459-2517 and ask for Service Manager.

PERSONALS

INTERESTED IN LOW COST JET TRAVEL TO EUROPE, and Israel? STUDENT TRAVEL CENTER can help you travel when you want and return when you want at minimal cost. For more info call TOLL FREE 800-325-8034.

DIAMOND ENGAGEMENT & WEDDING RINGS: Up to 50 per cent discount to students, faculty, & staff. Example, 1/4 ct. \$95, 1/2 ct. \$275, 1 ct. \$795, by buying direct from leading diamond importer. For color catalog send \$1. to SMA Diamond Importers, Inc., Box 42, Fanwood, N.J. 07023 (indicate name of school) or call (212) 682-3390 for location of showroom nearest you.

Officials easing overcrowded dorms

by John Pitts

Housing officials have begun the task of relieving crowded dorm conditions caused by an apparent miscalculation of fall "no-shows."

Presently, there are three-to-a-room conditions in the six dorms designed with overflow capabilities: Clement and Gore for men and Monohan, Lyon and the high-rises for women.



Jim Craig

Housing Director Jim Craig explained yesterday that "there are less no-shows for campus housing than ever before," and that the Housing Office started filling empty beds with overflow students yesterday.

There are more than 200 students in overflow this semester.

According to Craig, the Housing Office overbooks available dorm spaces by approximately 10 per cent when accepting applications for housing prior to registration.

"We take the number of dorm residents who will be returning in the next semester and then subtract the number of available beds. We then add ten per cent of that figure to account for the no-shows," Craig said.

"When we get that many applications, we quit taking any more," Craig said.

He explained that the overbooking compensates for "the cancel-

Gunselman gets teaching post

Marshall Gunselman has been placed into a teaching position in the education department for the fall semester following his removal from his position as director of the Learning Resources Center (LRC).

Gunselman was relieved of his duties in July after being given a letter of non-reappointment in the late spring. A decision as to whether Gunselman will be retained by the university will be made later this year, Jack Carlton, academic vice president, said.

Carlton has been acting director of the LRC since the summer and will continue as director until a new director can be found.

Carlton also said that an organizational study of the LRC is under way to set up guidelines for the new director of the LRC.

lation factor" of students who apply for housing and, for some reason, do not occupy the housing they had applied for.

"We just want to avoid having any empty beds," Craig said.

"We get \$30 when they don't show up," Craig said of the no-shows. "But you have to think that we get more than \$200 if they show up and stay. I'd rather not have to collect from a single deposit," he added.

Although Craig said "we'd like to have just two people in a room," the director admitted that "we may end up with some people living three-to-a-room all semester. We had some three-to-a-room last year until spring."

If students are forced to live in such a situation all semester, "we will probably give some rent refunds," Craig said. "There are some rooms on campus that were designed for three people—in

Cummings, High Rise West and Monohan," Craig added, and no rent refunds will be given there.

The overcrowded situation may dictate some changes in the housing application system next semester, Craig said.

"We may have to start allowing for fewer no-shows if this kind of thing continues," he said. "I'm sure we won't be accepting so many people as overflow next time," Craig added.

The gold bars of an Army officer.



The earning of a second lieutenant's gold bars is a proud moment for a man and his family. They represent not just the symbol of his achievement and rank, but also his responsibility.

That responsibility is to lead. And today, in an Army of better educated and highly motivated young men and women, the demands on a young officer are tougher than ever.

You not only have to manage people, but money and materials as well. To make more important planning decisions than most young executives.

The need for such people is one reason why Army ROTC is on campus at hundreds of colleges and universities. The acquired disciplines of mind and spirit, and the ability to perform under pressure, are important to us. The people who demonstrate these qualities are the people we want to become Army officers.

The benefits are as great as the demands. Scholarship opportunities. Practical experience as a leader and a manager. And a living allowance of up to \$1,000 each year you are enrolled in Advanced ROTC.

So if you're thinking of taking Army ROTC, what we offer has to be weighed carefully against what we expect in return. A man or woman who is ready to serve as an officer in the active Army, Army National Guard or the Army Reserve. And be worthy of the gold bars.

Army ROTC.
Send me all the facts about Army ROTC.

Ms. Mr. _____ Age _____

Address _____ City _____

County _____ State _____ Zip _____

Phone _____

TOM TAYLOR
Captain, U.S. Army
Forrest Hall
898-2470

ARMY ROTC.
LEARN WHAT IT TAKES TO LEAD.



we're quiet as mice.

Homeowners need an argument

First of all, we are not, nor have we ever been, members of a fraternity. Secondly, we have no friends, to speak of, who are members of Sigma Phi Epsilon.

However, the situation existing between that fraternity, the Murfreesboro Board of Zoning Appeals and homeowners in the area of the recently-acquired Sigma Phi Epsilon fraternity house is becoming increasingly difficult and something must be said.

The points brought forth by the fraternity's attorney John Lansden at the most recent meeting of the board seem valid. First, the board had acted in favor of establishing the fraternity at the house on Aug. 9...why should they change their minds because some emotional homeowners begin protesting with no basis for their claims of excessive noise and traffic congestion?

Secondly, a lease was signed renting the property to the fraternity. A legal contract, it would seem, should be binding.

Thirdly, Sgt. Hiram Lester's observation of two cars parked in front of the house on two separate occasions as being a violation of parking directives seems hardly worth mentioning.

The list goes on.

But the homeowners' reasoning seems slack. As of yet no serious or near-serious violations of fraternity house restrictions have occurred. Their rationale seems to rely on unfounded fears of beer-guzzling, poker-playing frat rats who don't even use the same sewage system as everyone else. But where do they derive their information on this

SIDELINES STAFF		
Harry M. Hill, Jr. Production Supervisor	Ted Rayburn Editor-in-chief	Judy Gordon Advertising Manager
Ben Eubanks News Editor	Cathy Wood Copy Editor	Laura Lewis Feature Editor
Steve Miller Assistant News Editor	Fred H. Powers, Jr. Assistant News Editor	
Frank Vickers Sports Editor	Eddie Gossage Assistant Sports Editor	
Byron St. Dizier Publications Coordinator		

Sidelines is published every Tuesday and Friday by the students of Middle Tennessee State University. Editorials and columns reflect the opinion of their authors and not of the MTSU administration, faculty, staff or newspaper adviser Byron St. Dizier.

fraternity and its habits? And why should this fraternity be singled out while others are scattered throughout the community and receive little notice?

There doesn't seem to be any short-term solution to this problem or that of any other local fraternities. Perhaps, as President Scarlett himself has said, they should all be located on campus. But as long as funding problems and university rules barring liquor on campus exist, this move cannot be expected.

Speaker asks for communication, involvement

To the editor:

As the new school year begins, there are many goals and opportunities Bobby Franceson, Joy Heath and myself have. While many of you were at home this summer, the Associated Student Body officers and staff were working diligently to provide you the students with the best governing body possible this year.

Our success this year in the ASB evolves around two elements: communication and involvement. Communication is the body of the ASB. We can plan and think of a million different ideas and programs for student government. We can implement and organize them. But they are no good unless we can communicate them to you. To accomplish this, ASB will submit letters to Sidelines, the student newspaper, to publicize ASB activ-

ities. We hope to have an ASB newsletter which will inform the students on ASB house and senate legislation and special activities like homecoming, Recruitment Weekend and high school workshops.

Communication however is not limited to the news media. Hopefully our best source of communication will be on a person-to-person basis. Sure, we have offices for the students to file their complaints but this year we are going to bring the ASB to the students.

Becoming involved with students by attending and participating in independent, greek and organizational activities, going to dorm mixers and just talking to students on a "down-to-earth" level is a prime goal of ASB.

Each student involved in the ASB, no matter if he or she is a volunteer or elected representative,

has a responsibility to reach out and help the students at MTSU.

I do not feel that student government should be limited to one select group of people. It should be shared among the masses. Without the students of this institution, the ASB would not have anyone to govern. We are all in this together. If we fail, we fail together; if we win, we are victorious together. That brings me to the second element of our student government.

Involvement. There are many definitions of that word. The most appropriate for the ASB is concern. It is great for Bobby, Joy and myself to plan and execute certain projects, for we have been elected and inaugurated to fulfill these obligations. It gives us a personal satisfaction inside to know that the students gave their time and effort

to improve and advance their student government. That shows us a sense of caring. That shows you that student government is you. ASB is what we as students make it. We agree that there are a lot of things wrong or missing here at MTSU and in the ASB, but talking about it won't solve it. Involvement and communication will. The ASB does not claim to have the answers to all campus-related problems. With 10,000 students here, we surely can come up with various solutions. It is easy to complain. It takes courage and integrity to change.

The ASB is what you make it. If you are not part of the solution (communication and/or involvement) you are part of the problem. It's your move.

Mike McDonald
ASB Vice President

Campus parking pains still uncured

by Steve Miller

Along with overcrowded dorms, the horrors of registration, and all the usual red tape at MTSU comes the perennial problem of campus parking.

"The problem," according to Sgt. Clair Hendrikson, of the university police, "is that people don't want to walk from the Greenland and High Rise parking lots." Hendrikson said that these commuter lots always have spaces available. The problem comes when commuters park in spaces designated for dorm residents. Parking tickets written Thursday included a notation that spaces were available in these lots.

Hendrikson said that the parking problem is no worse than it was last year. He added that most of the trouble is caused by upper-classmen.

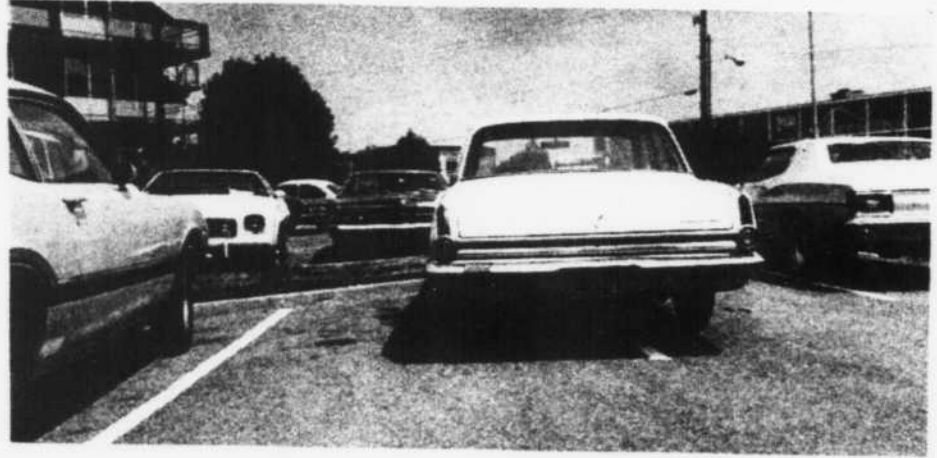
Freshmen, however, may be confused by the brochure that was

issued with the parking permit. The brochure shows the east side of "C" Street with a blue and green curb; it is actually yellow. Hendrikson said that although the brochure is in error, tickets are still being written for parking by a yellow curb.

Hendrikson admitted that more parking stickers are sold than there are parking spaces. He justified this practice by saying that due to staggered class times, all the commuters are never here at the same time.

The number of dorm stickers issued has increased because freshman males are now allowed to have them instead of the commuter stickers they had been issued before.

There are only 1,400 to 1,500 spaces available for dorm residents. It will be about a month before it is known if this is enough. "I would like to see more parking



Some find none, some find two

places," said Hendrikson, "but there is no place to put them."

Hendrikson said that parking lots are not funded by the state and they can only be built when they are needed. "We will never get any more parking spaces," he said, "until every space we have now is utilized."

"MTSU has a better parking situation than any other state university," said Hendrikson. UT Knoxville charges \$50 per year for a parking sticker that guarantees a parking space. "We could do the same thing," said Hendrikson, "but we would need a lot of reserve space and some type of control."

'Parenting' course offered

by Phyllis Skipper-Rose

"I think that in America we are in a period where people are aware of early childhood education," and that includes learning as a whole and not just intellectual learning, according to Andrea Loughry, instructor for "Effective Parenting," a new Continuing Education course being taught at MTSU.

The course will begin on Wednesday, Sept. 7, and will continue through Wednesday, Nov. 23, and will include both seminars and labs.

Seminar topics will include a multi-media approach to parenting; the exchange of coupons, outgrown clothes, toys, and equipment with other families; and receiving free and inexpensive parenting helps.

The seminars will be conducted on Wednesdays at either 9 or 10

a.m. in room 200 of the Ellington Home Economics Building and are for parents only. The labs include children and their parents and will be held on any weekday except Wednesday from 8 a.m. to 10 a.m. or 10 a.m. to 12 noon in the Infant and Toddler Learning Laboratory in the Home Living Center.

The course, offered for non-credit, is open to parents with children up to three years of age. One parent must be enrolled in the parenting course, and one child must attend the infant/toddler learning lab. Fees are \$15 for one or both parents, laboratory and seminar, and \$10 per child for laboratory.

For more information contact the Office of Continuing Education at 898-2462 or Andrea Loughry at 898-2886.



*Daniel's Salon
of Hair Design*
"UNISEX"
The Total Look

SPECIALIZING IN
PERMS, AFRO BLOW-OUTS,
WIGS, MANICURING
BLACK COSMETICS

530 S. E. BROAD ST.
MURFREESBORO, TN. 37130

898-4220
By Appointment Only

UNBELIEVABLE SAVINGS CALCULATORS & STEREO RECEIVERS

calculators

Texas Instruments

	WAS	SALE
TI-59	\$300	\$224.95
TI-58	\$125	\$93.95
TI-57	\$80	\$59.99
PC-100A	\$200	\$149.95
MBA-FINANCE	\$80	\$59.99
SR-51-11	\$70	\$45.95
SR-40	\$40	\$23.95
TI-1680	\$40	\$23.95
BA-BUSINESS	\$40	\$27.95
TI-5015	\$80	\$62.95
TI-5040	\$130	\$94.95
TI-5050M	\$110	\$79.95
MODULE LIB. FOR 58 & 59		\$29.95

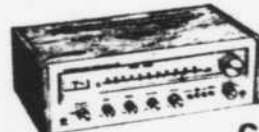
HEWLETT PACKARD

	WAS	SALE
HP-10	\$175	\$153.95
HP-19C	\$345	\$299.95
HP-21	\$80	\$69.95
HP-22	\$125	\$109.95
HP-25	\$125	\$109.95
HP-25C	\$160	\$140.95
HP-27	\$175	\$153.95
HP-29C	\$195	\$171.95
HP-55	\$395	\$129.95
HP-67	\$450	\$374.95
HP-91	\$325	\$279.95
HP-92	\$625	\$519.95
HP-97	\$750	\$624.95



1. Above prices include A/C Adaptor-Charger and Carrying Case
2. All above calculators have full one-year factory warranty
3. Enclose payment in full with order, or remit \$20 with order, balance C.O.D.
4. Shipping Charges: Add \$3.00 for calculators and 4% of price for receivers.
5. FAST DELIVERY GUARANTEED only with M.O. or certified checks. Personal checks will delay the order until it clears banks.

STEREO RECEIVERS



SEND FOR FREE

CATALOGUE

PHONE ORDERS ACCEPTED ONLY WITH CREDIT CARDS
814-237-5990

(Add 3% for Credit Card Orders)



	REG.	SALE
SX-1250	\$900	\$584
SX-1050	\$700	\$489
SX-950	\$600	\$402
SX-850	\$500	\$347
SX-750	\$400	\$279
SX-650	\$300	\$213
SX-550	\$250	\$178
SX-450	\$200	\$149

STEREO WAREHOUSE

119 NEW ALLEY, STATE COLLEGE, PA. 16801

THE EAR-RING BOUTIQUE

WELCOMES BACK STUDENTS OF MTSU

The Latest in Fall Jewelry and Accessories to Match YOUR Wardrobe

Free ear-piercing, the fast, painless way using only pre-sterilized hypo-allergenic studs.

Studs still only-----\$5.99

THE CORNER VILLAGE

Corner of Mercury and Broad

Open Mon.-Sat. 10 a.m. to 5 p.m.

Registration line thins as students pack dorms



Though prospective students were still filing through late registration yesterday [left], the flood had become a trickle. However, those who had already passes found themselves



crowded into the dorms three-to-a-room [right] awaiting further shuffling. [Thom Coombes photos]

Territorial House



WELCOME TO COLLEGE Fall '77 Murfreesboro Tennessee



You can shop around if you wanta, but you'll soon find that we have the best bargains around on jeans, tops, shirts, sweaters, records, 8-Track and cassette tapes, jewelry, and crabs. Crabs? Yeah, crabs... come see for yourself! You'll see that we have the

LOWEST EVERYDAY RECORD PRICES

anywhere around. We'll order anything. And deliver records to your dorm, too! Just call us at 896-4130. Come by and see us soon...

DISCOUNT COUPON !!

15% OFF

SAVE 15%

COUPON MUST BE PRESENTED

OFFER EXPIRES SAT. SEPT 10TH '77

AT THE STUDENT'S SERVICE

WE FEATURE FADED GLORY CLOTHING DISCOUNT

LIMIT ONE PER CUSTOMER

Territorial House AT THE NEW MALL

15% OFF

We're located at the **NEW MALL** on N.W. Broad

Monday-Saturday 10 am - 9 pm
Sundays 1 pm - 5 pm

30 new faculty members teaching here this fall

New faces on campus this semester don't all belong to students. Thirty new teachers have been added to the faculty.

In the school of basic and applied sciences five new faculty members have been named. John E. Nichols, John Lloyd High, and Geoffrey Porter Hull are instructors in mass communications. Byron St. Dizier has been hired as an adviser to all the student publications. James Glendon Staley is the new instructor in the agriculture department.

Seven new instructors have been added to the school of business. Russell B. Driver and Robert D. Hayes are teaching accounting. Robert Gene Colvard will teach accounting in the spring semester. Stephen Dale Lewis and Judy Ann Fichtel are teaching in the BDOM department. New teachers in the management and marketing department are Donald W. Richard and James Meredith Smith.

In the school of liberal arts, the speech department has five new teachers: C. Lewis Addison, Debra Mary Van Ort, Pearl Arada Gordon, Janet Mary Vasilus, and Linda A. Meyer. Also in liberal arts, is Rhynette N. Hurd, an English instructor. Wilma R. Harvey is teaching history, and Donald Angelo Catalidi is teaching in the sociology department.

The school of education has the largest addition to its faculty with 10 new teachers. John W. Harris teaches education and Sharon Dianne Fitzgerald is an instructor in home economics, as is Carla Stubblefield Hall. Randie Lee Blooding and Dale F. Voelker are the new instructors in the music department.

Added to the psychology department are Robert Gene DeMonbreun and Judson Leon Reese-Dukes. Rita S. King is a fourth grade teacher at the Campus School, and Francis W. Norwood is an instructor in criminal justice. Benny Ray Monroe is an instructor in HPERS and a football coach.



Mentalist Gil Eagles mugs his way through a demonstration of "mind-reading." Students Lynn Moore [left] and Kathy Ryder assist. [Steve Harbison photo]

WE BUY ANYTHING!

Cars Tools
Guns T.V.'s
Small & Large Appliances

TOP PRICES PAID!

890-0995



King's Table

American Smorgasbord Restaurants

ALL YOU CAN EAT FOR ONE LOW PRICE!
Lunch \$2.09 Dinner \$2.79
 11:00-2:30* (Plus Tax And Beverage) 4:30-8:30*
 Special Childrens Price - 15¢ Per Year Through 10 Years Of Age

YOUR CHOICE

- Selection Of Meats
- Fried Chicken - Our Specialty
- Variety Of Salads
- Potatoes - Green Vegetables - Grapes
- Hot Rolls - Corn Bread
- Choice Of Desserts

* Menu Changes Each Meal

BANQUET ROOMS/RESERVED SEATING CLOSED SUNDAYS



ORIENTAL MARKET

Weekly Specials

Prices good thru Sept. 12th

Budweiser..... 6pks.-12oz. cans & NRS-\$1.89 case-\$7.55
 case Ret. bottles-\$6.99

Everyday Low Prices

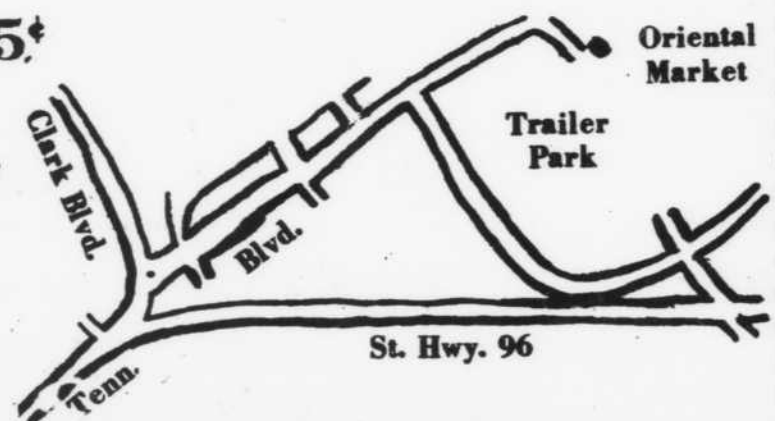
Blatz Beer-ret. bottles..... case-\$4.99

Ballantine Beer-ret. bottles..... case-\$4.95

Falstaff Lite 6pk.12oz. cans-\$1.49..... case-\$5.95

Busch Draft on tap-40oz. ctn. only 85¢

Come by and register (with purchase of each ctn. of Busch Draft) for 16 gal. Keg Busch. Drawing to be held Mon. Sept. 12, 1977.





Fashionable Savings From Big K!



2⁰⁰

Compare at 3.66

LADIES KNIT TOPS

Short sleeve, boat, sweetheart and crew neck styling. Contrast stitching, triple binding and color inserts. 100% Nylon. Sizes S-M-L.

SAVE ON FASHIONS

8⁰⁰

Reg. 9.66

LADIES PREWASHED JEANS

Latest fall styles with elastic back waist, six pockets and pocket on pocket.

MEN'S JUMP SUIT

9⁰⁰

Handsome outfit of 65/35 polyester and cotton has front belt with buckle, 2 chest pockets with emblem, 2 front and 1 back pocket; elastic waist. Assorted colors. Sizes S-XL.



3³³

BOYS SPORT SHIRTS

Long-sleeve 100 Percent polyester. Collar and button placket. Stripes on sleeve. Sizes 8 to 18.

6³³

BOYS JEANS

Two styles of 100% cotton indigo dyed denims with 2 "V" or western shaped front pockets and 2 back patch or welt pockets. Sizes 8-18.

3⁸⁸

MENS SPORT SHIRTS

Long sleeves with barrel cuffs, neck band, tab front. Contrast stitch on collar and two pockets.



7³³

Reg. 8.66

MENS JEANS

A great looking 10-oz. brushed denim jean. Four front wing pockets, 2 back welt pockets, 2 "U" shaped umbrella yokes and double contrast stitching. Sizes 29-38.

MEMORIAL
VILLAGE

OPEN DAILY 9 - 9 - SUNDAYS 1 - 6

LOCATED IN MEMORIAL VILLAGE - MURFREESBORO



Somebody hand him a towel

Despite Merritt's crying, TSU looks ready for Raider challenge

by Frank Vickers
Sports Editor

Somebody please hand John Merritt a crying towel.

Having never been accused of overestimating his teams, the Tennessee State coach has been trying to convince people that his Tigers are not ready for the season opener against Middle Tennessee.

Few will sympathize with him.

With only 10 lettermen lost from last year's squad, the Tigers are expected to have one of their best teams ever as they enter Division I competition. Merritt, however, has praise only for the opposition.

"MTSU should give us the best offensive ball game they've ever given us," Merritt declared. "They've always been able to move the ball, but it's always been on the ground."

"We think they've got a great passing game this year and that'll make them double-tough to defend," he added.

Merritt meanwhile expressed concern over his TSU team.

"We don't have the playing experience on this team that we'd like. Our biggest problem is our overall offense. We don't have a quarterback who saw a single down of play last season."

More realistically, however, the Tigers have outstanding personnel in practically every position. They boast one of the best groups of receivers in the nation, led by Rodney Parker.

"Their receivers are so fast you have to slow the game film down to watch them run their patterns," Raider defensive co-ordinator Jim Sypult noted yesterday.

As for the quarterback position, Sypult figures the Tigers should not be hurting.

"Their offensive line is big and fast," Sypult stated. "They will give the quarterback plenty of time to get the job done."

Even Merritt admits that his line positions will be well-manned.

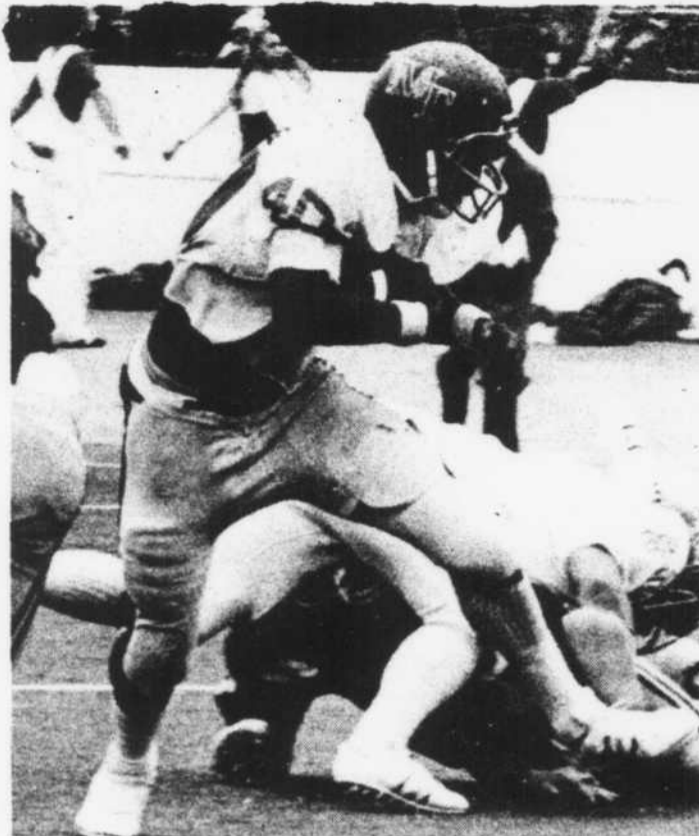
"Our biggest asset is our lines," Merritt declared. "Both are experienced and have fairly good depth."

Meeting is planned for mascot hopefuls

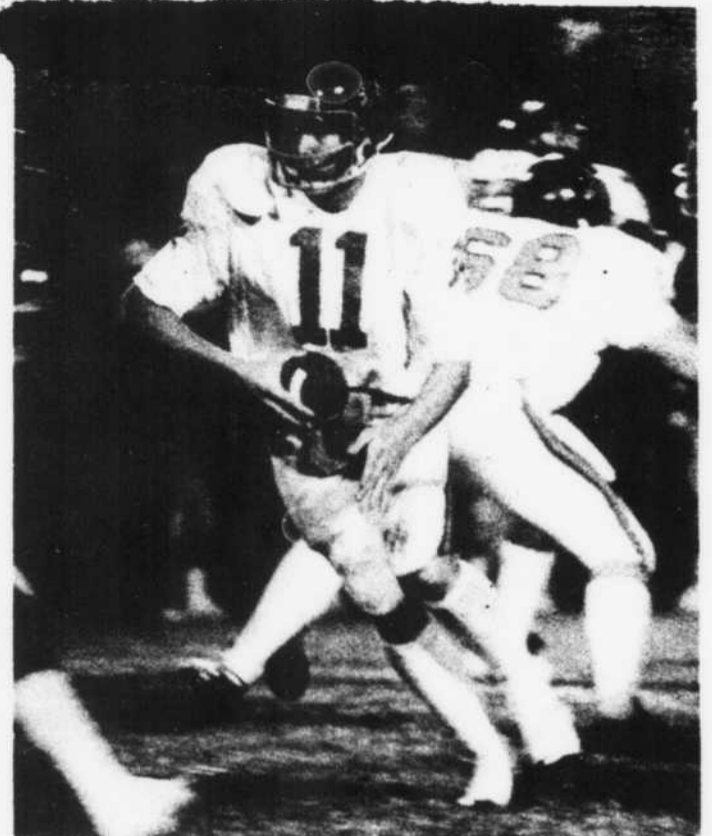
Tryouts for Blue Raider basketball mascot and freshman cheerleaders will be Sept. 29 at 3 p.m. in Murphy Center.

An organizational meeting for interested students will be held Tuesday afternoon at 2:30 in UC 120 with graduate assistant Jim Coleman, the cheerleading adviser.

Anyone who cannot attend Tuesday's meeting and needs more information should contact Coleman at 2782.



FB Mike Moore



QB Mike Robinson

Senior standouts direct Blue Raider attack on the ground and in the air

Offensively the Tigers average 6-3, 237, in the interior line positions. On defense the five-man front is the biggest in TSU history, averaging 6-3, 247.

One problem that Merritt may worry about is getting his team mentally ready.

"The only time anybody around here mentions Middle Tennessee is when he wants a complimentary ticket," Merritt stated. "Our kids just aren't ready for this game."

MTSU head coach Ben Hurt knows the Tigers are an outstanding football team, but he is not overly pessimistic about his own team's chances.

"They will be a big challenge for us," Hurt noted recently. "They have a fine football team. They've got talent and they've got tradition."

"Very few people give us a chance to beat them," he added.

Unlike Merritt, however, Hurt also had praise for his own squad. "The players are high," Hurt declared. "They think we can win."

Raider offensive co-ordinator Marshall Taylor also had complimentary remarks for the MTSU team.

"There is no doubt in my mind that we're going to be able to move the football," Taylor stated. "Right now we believe that if we can get a few good breaks we will be in this game."

Although the Raiders will be without the services of middle line-backer Mo Bell, who is out with a foot injury, they appear to be in otherwise good condition.

Quarterback Mike Robinson is fully recovered from a knee injury

he sustained last season and seems to be ready to play.

"He's throwing the ball better than he ever has," Hurt said of the Murfreesboro senior.

Robinson was the total offense leader in the Ohio Valley Conference last year until he was injured early in the Austin Peay game.

At running back Mike Moore will be looking to break some of the records he set last year as a junior. Moore is an almost undisputed choice as the premier running back in the OVC.

"Mike looks better than at any other time I have seen him," Hurt commented yesterday. "He is really looking forward to his best season ever."

Along with Moore in the backfield will be Robbie Rogers, one of the strongest players on the team, who also possesses good quickness.

Overall, the Raiders should be greatly improved offensively.

"We will have a better offensive team than we have had since I have been here," Hurt said, "but we must stay well."

Defensively, Hurt will be relying on eight seniors to provide the leadership for an improved year. "Our defense was sixth in the conference last year," Hurt noted, "but that is misleading."

When the offense turns the ball over more than five times in a game, it's hard for the defense because they have to play so much."

Although few would argue that the Tigers hold the edge in talent, Hurt's squad is counting on their mental attitude to keep them in the game.

Sypult put the game in perspective yesterday when he noted that "what it boils down to is a match-up or our intensity and patience against their size and skill."

\$2 tickets available today only for MTSU-TSU clash in Nashville

Today is the last day that students can purchase tickets to tomorrow's MTSU-Tennessee State game at the \$2 reduced price, MTSU Ticket Manager Jim Simpson said again yesterday. The discounted tickets are available at the MTSU Ticket Office in Murphy Center or at any branch of Murfreesboro Bank and Trust until closing time today.

Tomorrow all tickets to the game will be \$5 and will be available only at Dudley Field's 26th Ave. ticket

windows, which open at 9 a.m. tomorrow.

Students must have an ID card when they go to Dudley Field, for "officials there will require the students to show both the ticket and a validated fall ID before they will be admitted to the game," Simpson said.

Students attending the game should enter Dudley Field from Gate "S" on the west side of the stadium, he added.

Kickoff is at 7:30.

Bell's foot injury: could it hobble a pro chance?

by Eddie Gossage
Assistant Sports Editor

Professional football scouting reports say it best: Mo Bell is a hitter.

Bell, considered by many to be the hardest hitting player on the MTSU team, has reached a snag in his career which could jeopardize not only his future in the pros but also the success of the MTSU football team.

Recently Bell had a bone chip, and some infection from the chip, removed from his foot surgically. It wasn't until Sunday, only six days before the opening game of the season against powerful Tennessee State, that the senior was allowed to walk without crutches.

Now he must attempt what could be the most trying time of his career—reconditioning following surgery.

It has been two weeks since the 235-pound middle linebacker has worked out. His first scheduled workout since the surgery was yesterday.

Head Coach Ben Hurt said, "We may spot play him but we're still hoping for more."

However, indications were yesterday that Bell may not play at all. In fact he may not even dress out.

The Blue Raiders were counting heavily on Bell who was in the midst of the transition from defensive lineman to middle linebacker,



Mo Bell in action

replacing former great Jim Dunster.

Bell transferred to MTSU from Henderson Junior College in Texas last year. He quickly stepped in and plugged up the middle of the defensive line with 76 tackles and 40 assists, second highest on the

squad.

Several pro scouts have contacted Bell about the possibility of continuing his career following college. His confidence on returning to the lineup is reassuring.

"I won't have any trouble at all," Bell remarked. "I'll be back in no time."

Hale returns as Raider 'voice'

Veteran sportscaster Monte Hale will continue as the "Voice of the Blue Raiders" for MTSU football broadcasts this season, although he is presently not affiliated with any local radio station.

"I'm sort of in-between stations right now," Hale explained yesterday. He sold his partnership interest in Murfreesboro station WGNS-AM this summer and is awaiting Federal Communications Commission approval of his bid to purchase the other local station, WMTS AM-FM.

WMTS and campus radio station WMOT-FM will broadcast live from all eleven Blue Raider football games. The broadcasts will begin 15 minutes prior to game time with

a pre-game show, according to Harold Baker, director of WMOT.

The campus station will be the originating station for the Blue Raider Network broadcasts again this year, as they have since becoming a 50,000-watt station in 1971.

Jay Colley, a Chattanooga broadcasting student, will join Hale as the color man for the broadcasts.

Colley will host the pre-game, halftime and post-game shows, while Hale will handle the play-by-play of game action.

In addition to WMTS and WMOT, the Blue Raider football games will be broadcast by WENO (Nashville), WHAL (Shelbyville) and WDOD (Chattanooga).

U.C. CINEMA

SHOWING SEPT. 7 & 8--

M★A★S★H

Admission:

*\$.50 for the 3:30 Matinee &
\$.75 for the Evening Shows
at 6:00 p.m. & 8:00 p.m.*

Showing Sept. 12 & 13--

Creature From The Black Lagoon

Kwik Sak

Greenland Dr. 6 AM to Midnight

(across from Murphy Center parking lot)

•Special•

Miller Beer

Can or NR bottle

\$1.99

We carry

YOUR

favorite beer

in returnable

bottles.

We have Kegs on hand at all

times. Buy 2 Miller or Miller

Lite, get 3rd for half price.

ATTENTION!

The 1978 Midlander Staff needs workers. If you are interested filling positions in any of the following categories, please come by the Midlander Office (3rd floor of S.U.B.) on Wednesday, Sept. 7 at 6:00 for an interview.

ARTISTS

PHOTOGRAPHERS

TYPISTS

Please Bring Samples
of Work

DESIGN PEOPLE

In fields and streams

Active autumn begins for state outdoorsmen

by Gary Pryor

September marks the beginning of an active autumn for Tennessee's outdoorsmen, with squirrel and dove hunting competing with what should soon be some great fall fishing.

Gunning for the wily squirrel began last Saturday, and Tennessee Wildlife Resources Agency (TWRA) personnel predict the '77 season to be the best in recent years due to a peak in squirrel population and a good mast crop.

Because the forest foliage is still thick, hunters may need to carry their shotguns afield in order to more effectively bag the six-squirrel limit. However once the leaves begin shedding later in the season, the .22 rifle offers the maximum sport because it takes a good eye and a steady aim to hit a skittish bushtail running through the limbs of a hickory tree.

Dove season began yesterday at noon but recent reports reveal no concentrations of doves other than on a few private fields and TWRA management areas. Agricultural activity has the doves scattered due to the now-plentiful grain forage.

Dove hunting is the most popular nation-wide hunting activity because it can be family oriented. The usual method is to sit quietly on the edge of a grain field and wait for doves to fly overhead seeking food or water. Men, women and children can participate and hunters positioned at random can "drive" the birds their shots missed into the

direction of other hunters.

The dove, a blueish-gray bird light in weight and having very small legs, is the most abundant bird in the United States and has a high mortality rate, with only one of every three surviving to adulthood. The TWRA states that hunter kills replace the birds that would have otherwise died of starvation or exposure.

The bag limit for doves is 12 per day, with a 12 to 20 guage modified choke shotgun and 7½ size shot recommended.

On the water front, Cordell Hull Lake in Carthage seems to be the best bet in the bass fishing department, with the headwaters near Granville producing good hefty stringers on spinners and crankbaits.

With fall approaching and the cooler nights resulting in cooler water temperatures, Kentucky

Lake's gravel bar fishing should explode in both bass and stripe species. Find the shad minnow schools on the gravel bars and points, manipulate a Rapala, Top Sonic, buzz bait or other minnow-imitating lure and hang onto your hawg stick.

Fishing is also improving on Percy Priest Lake in both the bass and rockfish departments. Daylight catches have been the most abun-

dant with crankbaits the top lure.

At Center Hill, night fishing is still the thing, but anglers must drag a plastic worm 30 feet deep to make a good catch. Later in the month cooler water temperatures should bring the fish shallower and catchable in the daytime.

As for Old Hickory Lake, some bass have been caught on the river channel fishing spinnerbaits in log jams and brush.

Women's volleyball tryouts are planned

Sandy Neal, the newest member of the women's athletic staff, has announced a meeting for all possible candidates for the women's volleyball team. Anyone interested in joining the team should attend the meeting on Tuesday, Sept. 6, at 3:30 p.m. in room 101, Murphy Center. Tryouts will be held later that day with practice beginning sometime in the middle of the week.

SEND SOMEONE A SIDELINES

\$4.00 per semester
Subscribe NOW

Stephanies

Get the Latest in
Jewelry and Accessories

Purses Billfolds Rings

Necklaces Umbrellas

Earrings Key Chains

Hair Jewelry Bracelets

To College Students--

Ear-piercing--\$5.95

with Student I.D.

890-2300 IN THE MALL AT M'BORO

Students--

Sir Pizza Now Open with Lunch Specials



Sir
Lunch-A-Lot
Specials

11:00 a.m. to 3:00 p.m.

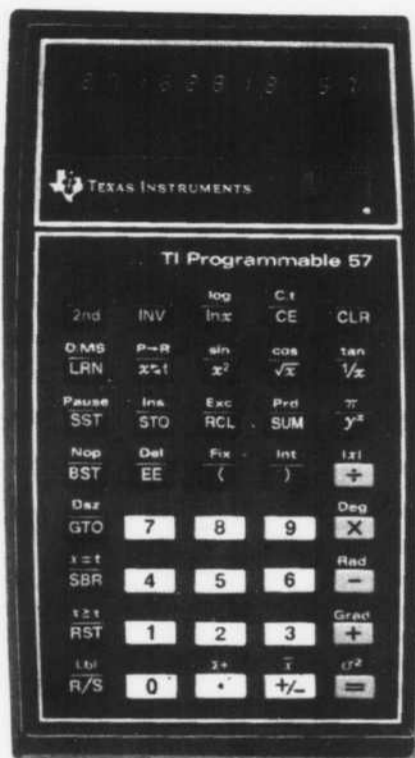
MONDAY	
QUEEN'S CHEF SALAD with Ham, Egg, Cheese, and Waffers \$1.12	
TUESDAY	
SPAGHETTI Garlic Bread and Salad \$1.12	
WEDNESDAY	
8" PIZZA one ingredient \$1.25	
THURSDAY	
HALF CRUSADER and chips \$1.05	
FRIDAY	
KING'S SIZE ROAST BEEF with chips \$1.32	

SATURDAY
Any of the Above Specials

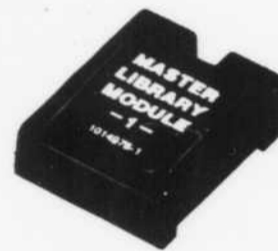
East Main Location--Open 11:00 a.m.
For Daily Luncheon

This is the semester to get your programmable.

The TI-57. Its self-teaching system gets you programming fast.



The TI 58 and 59. Both use revolutionary plug-in Solid State Software™ libraries.



TI Programmable 57. The powerful superslide rule calculator you can program right from the keyboard. Comes with an easy-to-follow, self-teaching learning guide—over 200 pages of step-by-step instructions and examples. Quickly learn the value of making repetitive calculations at the touch of a key. Recall entire instruction sequences. Display intermediate results at any point in a calculation. Eight multi-use memories provide addressable locations to store and recall data. Program memory stores up to 150 keystrokes (50 program steps). Editing too: Singlestep. Backstep. Insert or delete at any point in a program. Also a powerful slide rule calculator with logs, trig functions and advanced statistics routines.

\$79⁹⁵*

The TI-58 and TI-59 combine three major innovations to bring the power of programming to you—even if you've never programmed before:

1. Extraordinarily powerful—at remarkable low prices.
2. Revolutionary plug-in modules put complex formulas to work at the touch of a key.
3. Step-by-step learning guide that takes you from the basics of programming through advanced programmings—language you can understand.



TI Programmable 58. Up to 480 program steps, or up to 60 memories. Master Library module contains 25 prewritten programs in math, engineering, statistics and finance. Also increases number of steps—up to 5000. Library programs may also be addressed from the keyboard or inserted as subroutines. Can also be used with TI's new PC-100A printer/plotter. It lets you plot,

\$124⁹⁵*

TI Programmable 59. More powerful than the TI-58. Up to 960 program steps or up to 100 memories. Magnetic cards store up to 960 steps. And, record and protect custom programs. Also 10 user flags. 6 levels of subroutines. 4 types of branches.

\$299⁹⁵*

Optional Libraries. Applied Statistics, Surveying, Real Estate/Finance, Aviation, Marine Navigation. \$35.00* each.

FREE.

When you buy a TI Programmable 58 or 59 you can get this 19-program Leisure Library.

A \$35.00 value if you act now.

Football Predictor. Forecast score, point spread. **Bowling Scorekeeper.** Track 90 bowlers. **Golf Handicapper.** Update handicap from latest round's score. **Bridge.** Computes points from tricks made and bid. **U.S. Chess Federation Rankings.** Wins, losses, draws. **Codebreaker.** 3,024 possible codes make this a unique challenge. **Black Jack.** **Acey Ducey.** **Craps.** **Mars Lander.** Pilot to a safe landing. **Jive Turkey.** Guess mystery number—tells you if you're high or low—but is it jiving you? **Nim.** Play the machine, each time it gets better. **Sea Battle.** 15 missiles to sink sub. **Quarterback.** Call plays. **Photo 1.** Compensate for change in photo enlargement magnification. **Photo II: Fill-in-flash.** Computes correct lens f-stop in strong ambient light. Use it with a PC-100A and have even more fun. **Computer Art.** **Hangman.** Put in a word, second player guesses or hangs. **Memo Pad.** Write, enter messages. Print and record them on 59's mag card. Use the card to replay the message. **Biorythm.** Plots all three cycles.



Leisure Library comes with: Plug-in module. Library manual. Quick reference guide. Label cards. Library wallet.

Offer good from August 15 to October 31, 1977. Here's what you do. Fill out this coupon. Return it to TI with your serialized Customer Information Card (packed in the box), along with a copy of a dated proof of purchase showing the serial number. **Important.** Your envelope must be postmarked no later than October 31, 1977.

Leisure Library Offer
P. O. Box 53, Lubbock, Texas 79408

Name _____
Address _____
City _____
State _____ Zip _____

TI 58 or 59 Serial Number _____ (from back of calculator).

Texas Instruments reserves the right to substitute software libraries of equal value based on availability. Please allow 30 days for delivery. Offer void where prohibited by law. Good in continental U.S. only.



*Suggested retail price.