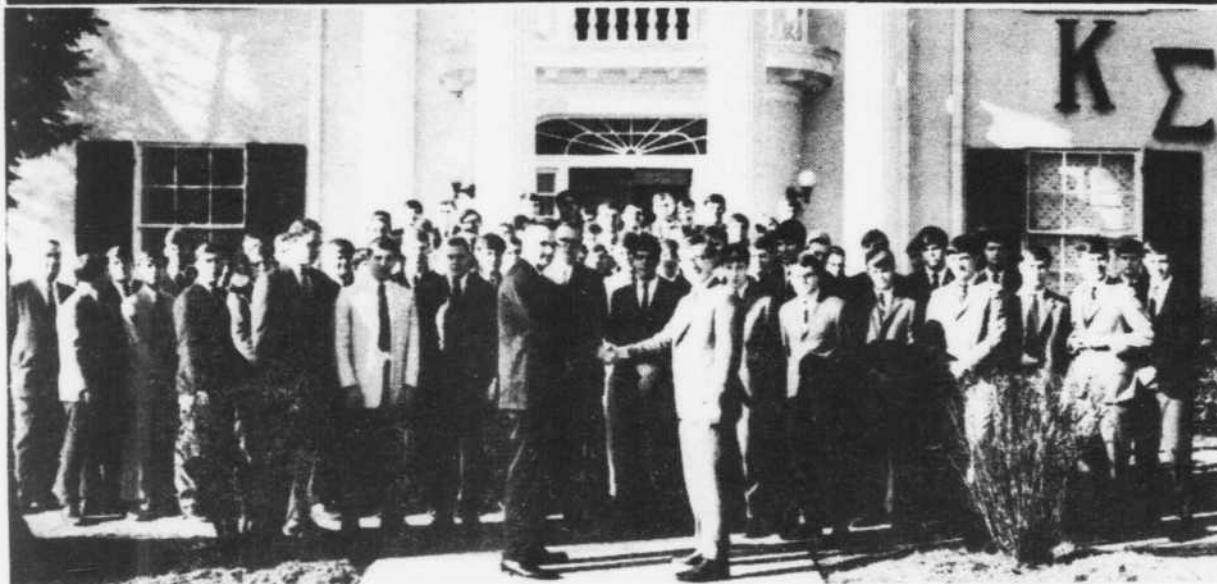


Sidelines

Vol. 41—No. 31

Middle Tennessee State University

Thursday, March 21, 1968



Sigma Tau Omega fraternity became a colony of Kappa Sigma national fraternity in ceremonies held Sunday, March 17 at the fraternity's house, 501 Bell St. The installing Kappa chapter from Vanderbilt University is in the first row. Tom Sparks, right, Grand Master, receives congratulations from Mr. David McCutcheon, left, district Grand Master.

Alumni Association Makes Video Tape

The MTSU Alumni Association has recently produced a 42-minute video tape on campus activities, according to Dr. Homer Pittard, secretary of the organization. The tape was made by Bill Cook and narrated by John Hood, director of development.

The purpose of this tape is to acquaint alumni members with the activities on campus and to introduce the professors to them, Pittard said.

The tape will be taken to various local alumni clubs by Pittard, Cook and Hood. In this way the campus can be brought to the attention of the alumni.

The tape starts at the entrance to the campus and then moves to the various construction sites. Dr. Patterson explains the new science building, and there is a tour through the new student center with an interview with Dallas Bigger, director.

In the tape the Dramatic Arts building is toured, and Lane Boutwell, chairman of the Speech Department, discusses the proposed radio station. Bubber Murphy, head football coach talks about spring practice and prospects for the fall.

Dean Kirkman, dean of the graduate school, is interviewed concerning the new programs in the graduate school. Dean Weems, dean of admissions, discusses the enrollment projection for next fall and analyzes the enrollment of this year.

Near the end of the tape students of the county to which the tape is going to be taken are interviewed. This section is changed according to which alumni club the tape is taken. The tape closes with a view of the campus Hi-Rise dormitory.

The equipment used to make the film was the property of the Athletic Department, according to Pittard. The coaches use the equipment to make video tapes of the games and practice sessions. The tape is then shown to the players so that they can correct their mistakes.

What's Up---

- Thursday, March 21
- 11:00 a.m. Pi Sigma Epsilon—B 101
 - MTSU Math Club—OM 360
 - SCU—Con. Theatre
 - 4:00 p.m. Kappa Tau Delta—Hi Court
 - 4:30 p.m. All Fraternities Clean Up Campus
 - 5:00 p.m. Triton Club—Pool
 - 6:30 p.m. Orchesis—Gym
 - Dance Studio
 - House of Rep. SUB 304
 - Senate—SUB 303
 - Socratics—OM 452
 - CAP—Study Hall OM 225
 - 7:30 p.m. Phi Theta Psi—SUB 303
 - Skin Diving Club—Pool
 - CAP (practicing)—Conf. Theatre
- Friday, March 22
- 3:00 p.m. CUBE University Center 322
 - 8:00 p.m. Triton Club Show Pool
- Saturday, March 23
- 11:30 p.m. Sullivan's Coffee
- Sunday, March 24
- 2:00 p.m. CAP Open House Pledges and Sorority
 - 4:00 p.m. CAP Gas Co.
 - 5:00 p.m. Lambda Psi University Center 312
 - Phi Epsilon City Council Chamber

Screening Committee Rejects 46

Of the 177 students who were interviewed by the Screening Committee of the Teacher Education Program, 46 were rejected this semester.

The Committee bases its decisions mainly on grade point average, although personality and physical attributes are also taken into consideration.

As of now, a student must have a grade point average of 2.15 to enter the teacher education program; however, this fall he must have a 2.25.

(Continued on Page 6)

STO Becomes Kappa Sigma

The Sigma Colony of Kappa Sigma national fraternity was installed here Sunday March 17. The Kappa chapter of Kappa Sigma from Vanderbilt University was the installing chapter. The District Grand Master for Kappa Sigma; Mr. Dave McCutcheon, of Jackson, presided over the installation.

According to Tom Sparks, Grand Master of the Kappa Sigma Colony, the new colony, which was the former Sigma Tau Omega fraternity, will now enter a pledge training period which will last approximately three months.

After this three month period they will remain a colony until the time which the University will set for activation.



U. S. SENATOR ROBERT F. KENNEDY, New York, will speak on "The Destiny of Dissent," a pre-Impact address, at Vanderbilt Memorial Gymnasium, 7:30 p.m. tonight.

Free Elected ASB Pres. Bennett, O'Neal Speakers

In the largest turn-out ever experienced in an MTSU student election, according to past records, Jim Free, Columbia junior, defeated Mac McDonald, Lawrenceburg junior, for ASB President 1009 to 911 by a 98 vote margin. Free got 52.59% of the votes cast for ASB president.

In the race for speaker of the house, Patrick O'Neal, Chattanooga junior, won over Pamela Owen, Old Hickory junior, 1,154 to 733. Doug Bennett, Murfreesboro junior, who ran unopposed, received 1,785 votes for the position of speaker of the senate.

Jimmy Garner, Murfreesboro junior, received the top number of votes for senior senator with 269. The other four victors from the eight contenders for senior senator are: Edward Baker, Freeport, Penn. junior, 257 votes; Anne Adams, Columbia junior, 251 votes; Priscilla Owen, Old Hickory junior, 237 votes; and Gail Colebrooke, Arrington junior, 227 votes.

The five winners for junior senators were led by Derald Cochran, Cleveland sophomore, with 391 votes. The other four winners were: Sara Smith, Carthage sophomore, 317; Frank Hayes, Nashville sophomore, 311; Sharlena Phillips, Nashville sophomore, 303; and Vance Martin, Red Bank sophomore, 297.

Sandra Baugh, Chattanooga freshman, had the most votes cast for sophomore senator with 542 votes. The other three winners include: Joe McDonald, Lawrenceburg freshman, 511; Bart Gordon, Murfreesboro freshman, 429; and Roger Hardaway, Tullahoma freshman, 410.

Jim Free, ASB president-elect, said, "I want the entire student body to know that I will carry out the promises I made to the best of my ability. I have always worked with the students and I hope that they will now help me to make this a better Associated Student Body. I want to thank those who supported and voted for me."

Patrick O'Neal, newly elected Speaker of the House, stated, "I want to thank all the people who supported me, and I will try to uphold the faith you have entrusted in me by electing me to this office. I will endeavor to involve more students in their government and keep them informed."

Doug Bennett, new Speaker of the Senate, said, "I am happy to be able to serve in this position and hope to work hard to make next year's ASB the best possible. I want to thank the students for their support and vote of confidence in this election."

In conclusion, Paul Womack, present President of the ASB said,

"I extend my congratulations to the winners, and I think the large turn-out is indicative of a well fought campaign. I look forward to working with the president-elect in making the transition of ASB administrations smoother."

Kennedy at Vandy

Senator Robert F. Kennedy of New York will speak at 7:30 tonight in the Vanderbilt Memorial Gymnasium as part of the Impact program. Kennedy will give a general address on the Impact '68 topic, "The Destiny of Dissent." Student and Adult tickets will be purchased at the door. Only Impact ticket-holders will be admitted.

Kennedy, the latest declared candidate for President of the United States, announced Saturday that he would oppose President Johnson for the Democratic nomination.

"This will be his first appearance on a Southern college campus since announcing his candidacy," said Frye Gillard, Impact chairman. "He should have some provocative things to say."

Other Impact speakers include civil rights and anti-war leader

(Continued on Page 7)

Dorm Contract To be Awarded

Construction of a new women's dormitory will soon be underway, according to Pres. Quill E. Cope. He stated that the contract will be awarded within the next 60 days.

Similar in design to the present hi-rise, the new dorm will include five separate halls for campus sororities to hold their meetings and activities. It will be located east of the present hi-rise.

Cope said that completion of the building is projected for the fall semester, 1969. It will house 400 students.

Plans for the building do not include a new cafeteria.

Dean Burns Comments On Progress Of National Frat Affiliation

The Dean of Men, A. Chester Burns, was asked to describe how national affiliation was progressing in the other fraternities in relation to the establishment of the Kappa Sigma colony. Dean Burns stated that the various national fraternities utilize different methods in admitting new groups to national organization.

The method used by Sigma Tau Omega and Kappa Sigma Fraternity is that of a colonization period. This allows the local group to acquire the identity of a national very early in the steps necessary to take before final affiliation with the national. The colonization system provides high visibility but it is still time consuming. The ultimate decision is delayed until the termination of the colonization period.

Other locals on our campus are currently attempting to affiliate

with national fraternities by petitioning a national or by requesting the alumni of a given national to oversee their operation until such time as the national fraternity can install them as a member of a national fraternity. At present, on our campus, each of the above methods is being utilized.

The methods other than the colonization period do not provide the college community with the knowledge that the national affiliation is being pursued and is probably as close to culmination as the group utilizing the colonization situation.

Various fraternities require different lengths of time to prepare for national affiliation. This subject was considered by the committee who recommended that fraternities be allowed to be installed at MTSU. The committee, realizing that various nationals take

differing lengths of time to prepare for national affiliation, designated that the earliest that any of our local groups or our students would be eligible for membership in a national fraternity would be the fall semester of 1969. It is felt that each of the local groups is looking forward to this date so that they can acquire national affiliation.

The committee on fraternities stipulated that an evaluation of the fraternity system would be necessary prior to the establishment of national fraternities. It would be anticipated at this time that the fraternity system would receive a positive evaluation at the end of the three-year period which would allow for national affiliation starting at the onset of the fall semester, 1969.



A. Chester Burns, dean of men, receives a certificate of appreciation from James M. Jacobs, acting president of Lambda Psi fraternity.

Cirde K, Track and Sabre Will Vie Tonight; Kappa Tau Delta, Phi Epsilon To Also Play

Tonight the Socratics sponsored college bowl features Circle K playing the Track and Sabre Club and Kappa Tau Delta playing Phi Epsilon to determine which team will advance to the quarter finals. The contest will be at 7 p.m. in the University Center Theater.

Thursday, March 14 Tau Omicron scored 20 points and was defeated by Pi Gamma Mu's 165. In the same round last year's winners Die Deutschen Kameraden (German Club) defeated Gamma Beta Phi 320 to 15.

The Pre-Law Club defeated the Veterans Club by a score of 125 to 65, and the French Club scored 75 falling to Pi Gamma Mu's 165. This contest was Tuesday March 12.

The Forrest Raiders whipped Delta Pi Delta Sorority 195-55, and the battle of the fraternities resulted in a win by Sigma Tau Omega over Lambda Psi by a score of 240-40 in the Tuesday, March 5 contest.

The Chessnuts defeated the Math Club 120-35, and the Newman Club scored 250 defeating Delta Omicron's 30 in the Tuesday, March 19 election.

The College Bowl contests held Thursday, Feb. 29 featured a tie by Kappa Tau Delta and Kappa Delta Pi and a forfeit by Tau Sigma.

Kappa Tau Delta defeated Kappa Delta Pi by 10 points when they correctly identified Los Angeles as the largest city in area in the United States breaking the 80 to 80 tie.

Phi Epsilon advanced to the next bracket as Tau Sigma lost by forfeit. Phi Epsilon played a practice game with THEM, a team composed on the spot. THEM scored 215 points; Phi Epsilon 55.

All students involved in the contests are fulltime undergraduate students currently enrolled at MTSU.

Contests are scheduled as a tournament and the champion will be the team which advances through all the contests without being defeated.

The contests were moderated by Allen Stuit, assistant professor, English; and judged by Mrs. Michael Zimmerman, instructor, history; and J. W. Gilbert, associate professor, physics.

Jamison Has Article In Tenn. Math Magazine

King W. Jamison, associate professor of mathematics at MTSU, has an article entitled "The Development of an Ordered Pair Multiplication Identity Without Isomorphism" appearing in the winter edition of the TENNESSEE MATHEMATICAL BULLETIN.

The problem and solution presented by Jamison resulted from his failure to find such a problem presented in any abstract algebra texts. The problem has been used as a class exercise with good results when the students are familiar with the idea of ordered pairs of positive integers and have become competent in solving exercises which illustrate and unify the properties of positive integers.

The author explains that this is done before the student has been led, through the concept of isomorphism, to broaden their understanding of integers and zero.

Cope Conducts Talks With Senior Class Members

Pres. Quill E. Cope is presently conducting informal talks with members of the senior class. These talks are to give several students the opportunity to meet and talk with Pres. Cope.

Cope expressed regret that he could not meet with all members of the senior class, as he did when the university had smaller graduating classes.

Study Tour of Germany Arranged for Students

A nine week study tour of Germany and surrounding countries this summer has been arranged for MTSU students, Mrs. Ortrun Gilbert, professor of German has announced.

The group, which as already been enlisted, consists of eight MTSU students, an accompanying instructor, a junior at Memphis State University, and a non-student. The students are mostly language and history majors. They are all members of the Modern Language Association.

The groups will depart from New York June 24, on Pan Am charter flight No. 19 (out of 31 flights) of the Modern Language Association, and will arrive in Amsterdam that day.

They will be met by a private bus of the Scharnow-Travel-Service of Bremen, Germany. The bus tour, which lasts six weeks, will travel through Holland, Germany, Austria, the Alsace-Lorraine region, Luxemburg and Belgium. The bus is a Mercedes equipped with AM-FM radio-microphones.

From Brussels, Belgium, the group will go individually or in smaller groups to various points of their interest. There will be a three week interval between the bus trip and the departure for New York from Amsterdam, August 26, with Pan-Am Airlines.

Mrs. Gilbert explained that the students will stay with families during the bus tour. Scharnow has arranged two students to a family. On individual side-tours, the participants will stay in youth hostels.

"The group will stay and visit many important places of worldwide interest — Den Haag, Common Market Headquarters, museums, castles, schools and art institutions," said Mrs. Gilbert. "Through the close contact with the various people in their homes, the travelers hope to learn much about a different way of life."

"We hope that with a successful pilot-trip this year, a yearly program for our students can be established in the future," she said.

Those enlisted for the trip are Marsha Shacklett, Murfreesboro junior; Darlene Derryberry, Columbia senior; Olivia Derryberry, Columbia (not a student); Susie Latane, Oak Grove, Virginia junior; Linda Willis, Tullahoma,

Memphis State University junior; Martha Sadler, Murfreesboro junior; Toni Flynn, Murfreesboro senior, organizer and exchequer; Ray Hollis, Waynesboro junior; Don Trisdale, Nashville senior; Ann Sloan, Murfreesboro freshman; and Regina Warden of Murfreesboro, an MTSU teacher of German.

Students will pay an estimated \$285 apiece for the round trip flight, \$200 apiece for the bus, and \$100 apiece for food during the three week interval.

Mrs. Gilbert, a native of Bremen, Germany, arranged the trip last summer during a visit there.

An effort was made last year to arrange a study tour for the summer of 1967. It failed because of a lack of participants.

Mrs. Gilbert stated that there is a possibility of obtaining credit for the trip, depending on official approval.

Yearbook Seminar, To Be Held

The Taylor Yearbook Company will hold a seminar in the Student Union building on Wednesday, March 26, from 8 a.m. to 3 p.m. Tom Yokeley, Bob Gilbreath, and Jerry Dixon from the Texas based company will be in charge of the program.

The program will consist of a motion picture showing how a yearbook is published, as well as two group meetings. One group meeting will show what material is most appropriate in the yearbook, and the other group will learn the business aspects involved in the supporting of a yearbook.

Editors and business managers for high school yearbooks in the Middle Tennessee area will attend the seminar.

**SHORT ORDERS
SANDWICHES
FOUNTAIN SERVICE**

Open 8 a.m. - 11 p.m.

College Heights
Shopping Center

**SELF SERVICE—
FAST SERVICE**

**THIS IS RAIDER
COUNTRY!**

BONANZA SIRLOIN PIT

MERCURY PLAZA

**Ponderosa Room Available Free of
Charge for all Parties and Meetings**

The Center For All Drug Needs

is at

STICKNEY AND GRIFFIS

DRUG STORE

ALSO

Russell Stover Candies

Phone 893-4682

New Assistant Dean of Women Announced

Mrs. Mary Jane Levi of Murfreesboro now assumes the position of Assistant Dean of Women that was recently occupied by Mrs. Judy Milholland. Mrs. Levi officially took office as Assistant Dean of Women March 11, 1968.

Mrs. Levi is a graduate of Carson-Newman College in Jefferson City where she received her BA degree in 1949. She holds a MRE degree from Southern Seminary in Louisville, Kentucky and a MA degree from MTSU which she received in 1965. Mrs. Levi has done graduate work at Peabody College in Nashville.

Before coming to MTSU, Mrs. Levi was the guidance counselor at Glencliff High School in Nashville. She also worked at Glencliff as a teacher-counselor. Mrs. Levi has worked as part-time teacher of speech and drama at Belmont College in Nashville.

SCU Is Changing Meeting Time

The Student Christian Union is in the process of changing its scheduled meeting time, according to Terrel Bain, SCU president. Previous meetings were held at 6 p.m. in the SUB on the first Wednesday night of each month.

A new time, Thursdays at 11 a.m. in the University Center theater, will be voted on by members after three trial meetings have been held.

Bain stated, "I think the new meeting time for the SCU can be effective in encouraging an in-group feeling because of the increase in the times we will be meeting. I also think it is to our advantage that we are now meeting in the new University Center because people can come to the SCU meetings at 11 a.m. and we will be through with the program by 11:30, which will give everyone time to go into the Grill and have lunch before their 12:15 classes."



OF COURSE THE BOMBING'S BEEN EFFECTIVE. IT'S MADE ROUND RICE PADDIES OUT OF SQUARE ONES.

Research Grants Are Awarded

Dr. Ralph E. Kirkman, Dean of the Graduate School of MTSU has announced "Research Grants" for several members of the MTSU faculty. Among these are Everett W. Cunningham, political science; J. Frank Lee, psychology; and Charles W. McKinney, department of chemistry and physics.

Dr. Cunningham in cooperation with Dr. D. H. Grubbs of the MTSU Political Science staff will seek to gain empirical data on the influence of certain forces on the legislative behavior of members of the Tennessee General Assembly.

Mr. Lee will work on an

analysis of juvenile offenders in middle Tennessee in an effort to determine the risk of probation for juvenile offenders. He will work in connection with the division of juvenile probation of the Tennessee Department of Correction.

"A Lateral Ion Temperature Probe for Low Energy Plasmas" will be the subject of Mr. McKinney's study. Result of Mr. McKinney's study is to appear in the "Review of Scientific Instruments."

Aviation Minor To be Offered

Aviation will be offered as a minor beginning next fall according to Howard Kirksey, dean of faculty.

Kirksey stated that in the past the aviation courses were just elective courses but beginning in the upcoming fall semester, it will be recognized as a minor. This is just one of the changes that will be present in the new University Bulletin which will come out soon. The bulletin is presently being printed.

Sacred Harp Singers Sing in Nashville

The Sacred Harp Singers, under the direction of Margaret Wright, assistant professor of piano, organ, and marimba, were presented in concert at the annual Harp Singing at Harpeth Valley Presbyterian Church, Nashville, on Friday March 15.

Members of the Sacred Harp Singers are Linda Cook, Nashville senior; Michael Dyer, Nashville freshman; Wendy Brickell,

Chattanooga sophomore; Ann Moss, Nashville senior; and Brenda Anderson, Chattanooga sophomore.

Rocky Craft, Nashville senior; Jack Birchett, Chattanooga sophomore; Lynn Moore, Chattanooga junior; Ann Jackson, Chattanooga sophomore; Glen Belcher, Murfreesboro sophomore, and Bill Cantrell, Hixson junior are also included.

Notice

Final call for secondary student teacher application for fall semester 1968 must be filed with Dr. Joe Nunley, director of secondary student teachers, no later than March 26, 1968.

BIG T. CABS
IS NOW INTOWN
BIG T. CAB CO.
Gives you 24-hour service day and night — anywhere, any time.
BIG T. CAB CO.
Go Everywhere
Big T. Cab Co.
208 S. Church St.
893-0911
Owner — ROBERT TAYLOR

PRONTO
NEXT TO MTSU
Open Daily 10 A.M.-11 P.M.
Sunday 11 A.M. - 9 P.M.
Chicken - Seafood - Burgers
Footlong Dogs - Shakes - Sundaes

RIDE THE FREE BUS TO
BURGER BROIL
Good Food and Rapid Service Jackson Heights Plaza

The Music Shop
"Everything In Music"
102 East Vine - 893-4241
Murfreesboro, Tenn.

International Center for Academic Research
1492 COMMONWEALTH AVENUE
BOSTON, MASSACHUSETTS 02135
The International Center for Academic Research is designed to help every student achieve his maximum potential in the subject, or subjects, of their choice. We at The International Center for Academic Research are proud that these outstanding instructional techniques have shown proven results for decades.
OUR GUARANTEE
The International Center for Academic Research, after exhaustive studies, is able to give a complete money back guarantee: If after following instructions faithfully you have not increased your scholastic standings noticeably, your money will be completely refunded.
Special introductory offer expires May 1, 1968. Price thereafter \$3.95 per course. For personalized assistance send \$1.00 per course to:
THE INTERNATIONAL CENTER FOR ACADEMIC RESEARCH
1492 Commonwealth Ave, Boston, Mass. 02135

Please include:	Course:	Last semester average
Name	1.	1.
Address	2.	2.
City State	3.	3.
Zip Code	4.	4.
College or U.	5.	5.

Special group rates for fraternities and sororities. 20% discount for groups of ten or more. Please include organization title
Allow 4 to 6 weeks for processing and delivery.

Editorial

Decide For Yourself Speaker vs. President

The ASB Senate was asked to approve ASB President Paul Womack's appointment of Jim Parnell as attorney-general. Tom Sparks resigned from this office in order to campaign, which he could not do as a cabinet member.

For reasons, misunderstood and misinterpreted by many, the senate did not approve Womack's appointment. Womack then appointed Parnell as assistant attorney general with the office of attorney general held vacant temporarily.

Conflicting words have occurred since this decision. The statements from Womack and Miss Linda White, speaker of the senate, are as follows:

White Accuses

Fellow Students:

1-On March 14, the day of the joint session, I received a note seeking Senate confirmation of Jim Parnell as Attorney General, as well as Gary Clayborne as Chairman of the Election Commission.

2-The Constitution of the ASB REQUIRES Senate approval of ALL presidential appointments with these words: "They shall perform such duties as may be prescribed by law or by the President of the ASB SUBJECT TO THE APPROVAL OF THE SENATE."

3-Both appointments were considered on March 14, when the Senate met. The vote for Parnell was: one yea, 10 nea, and two abstentions. The vote for Clayborne was 12 yea, none nea, and one abstention.

4-March 15 I received a letter from the President which stated: "I have appointed Mr. Parnell as Assistant Attorney General which does not require Senate approval. . . He shall be acting Attorney General until a new nominee. . . may be found. He shall be recognized, entitled to, and shall receive the rights and privileges due the Attorney General. Please convey this information to the Senate." One question: Assistant to whom?

5-Recent legislation has removed the responsibility of handling campus elections from the duties of the Attorney General and has placed them in the hands of the Election Commission chairman. He now has only the duty of being chief prosecutor in the Supreme Court and a liaison between the President, Dean of Students, and the Supreme Court.

6-The Senate meets weekly. There were no urgent cases before the Court for the Attorney General to prosecute.

7-No matter what reason the President had, no matter what compelled him to such action, he clerly, (a) IGNORED THE LAW, (b) IGNORED AND EVADED THE SENATE VETO. THERE CAN BE NO EXCUSE for ignoring either the Constitution or the Congress. There-EXCUSE for ignoring either the Constitution or the Congress, therefore your elected representatives. Our student government is based upon the Constitution and the representatives you, as students, elect. AND NO ONE, regardless who he is has the right to alter EITHER without due process of law.

Linda C. White

Speaker of the Senate

Womack Defends

Fellow Students:

"It is unfortunate that sometimes ASB matters assume emotional and personal overtones, and I am afraid that this particular case assumed just that posture both from myself and others who were opposed to the appointment. However, as I stated at the Joint Session when I announced my selection of Mr. Parnell as Attorney-General, I felt him to be qualified, fair and impartial - otherwise I would not have asked that he be appointed.

"There were no questions raised to me that night as to his qualifications or anything else concerning his appointment. I was informed that he had been rejected but was not given any reasons in the official communication advising me of this as to why he had been rejected. I was also informed that the Senate vote was by secret ballot.

"While I do not presume to advise the Senate on how its business should be conducted, I do not think the matter was handled fairly or properly. I have discussed this with some Senators, both emotionally and objectively I must admit, and I feel that my asking Mr. Parnell to serve as Acting Attorney-General is proper until this can be properly resolved. As soon as the election climate calms down some I hope we can do just that."

Paul Womack
President, ASB

Editor's Note:

The student can now make his own decision as to which of our ASB officials is correct in this matter. Whatever your opinion, the fact remains there is a definite conflict that supports such disgusting incidents.

How can our "campus leaders" lead if they are so involved in personal conflicts?

As I See It

New Finale to Conclude Old Show

By David Mathis, Editor-in-Chief

I attended the annual spring installation banquet of the Baptist Student Union held on Wednesday evening, March 13. Upon first being approached with the idea of attending this banquet, I felt indifferent about the entire matter. But then I decided (rather unenthusiastically) to attend.

After the banquet was completed, I realized that I had truly enjoyed every minute of it. But the primary factor that lingered in my memory was a single point brought forth by the speaker of the evening.

This man, whose name is irrelevant except to a few BSU members, brought a challenge to all students religious groups on campus. The text of his talk applied not only to the BSU, but to any denominational group with a similar purpose.

The theme of the discussion was "The Show Must Go On" with many descriptive examples highlighting the purpose of the talk. But somehow this encouraging speech promoting the work of the campus religious groups lost much of its importance in its original realm. Everyone has heard speeches that encourage more participation and interest, for this bit on apathy has been worked and overworked.

As to if I was supposed to ignore the remainder of the talk after one significant statement evolved, I doubt it. But the fact remains that I heard and remembered only a challenge to the church groups at MTSU.

The point was expounded upon by the comparison with a social organization. Church groups often tend to be "clique" of supposedly devout people. From the outside looking in, one wonders exactly who is really sincere in their efforts and who needs a place to carry their books between classes.

Why do people join church groups? Obviously there are many reasons and simply to meet new people is not to be overlooked as one of the most significant — no matter who may say contrary. There is always the girl seeking to meet her future husband or the boy so upset with the state of dormitory conditions, that they safely shelter themselves behind "open" doors.

Do we have a paradoxical situation present? Can one shelter oneself from the truth in such an organization seeking the truth? To think this is impossible is utterly ridiculous for some of the people in these religious CLUBS are no more aware of the "church on campus" idea than they are aware of their desire for safety and security.

The speaker continued with one statement that I have longed to hear. He concluded that during one's freshman year the sheltering of the church group was excellent, but no good could come from this continual existence. He cited real progress being made when Christian students went out, took an active interest in campus activities, and sincerely served as a model for others to follow.

After all, the supposed purpose of such groups, is to act as a missionary on campus. This can hardly be done effectively by holding insignificant and emotional revivals for members of their own flock.

The challenge remained with me and I wanted to share my opinion of a point not to be shunned. Linus has his blanket while many of us have our church group.

Our Man Hoppe

Oh, What A Lovely War, Mr. President

Arthur Hoppe

The President is reportedly demanding that all aspiring office seekers pledge their loyalty not only to the Democratic Party and himself, but to his policies in Vietnam.

The goal, of course, is party unity. And the loyalty test is being applied, according to one report, even down unto the levels of sanitary district trustees.

As always, this attempt to achieve party unity is causing agonizing reappraisals and psychic traumas.

Take the case of Mr. Malcolm Murdlee, an ambitious but honest depilatory salesman who yearned to serve his country on his local Federal District Featherbed Inspection Commission. At \$18,500 per annum.

Mr. Murdlee was in town to present his qualifications as a featherbed inspection commissioner to the Democratic National Committee.

"I ring 2300 doorbells every November, tithing myself annually for the Party, and have never missed the county's Jefferson Day Meatball & Sauerkraut dinner," begun Mr. Murdlee proudly. "Moreover I loved everything there is to love about our beloved President, including how he picks up dogs and the way he says 19 and 68."

"Tut, tut, Mr. Murdlee, enough small talk," said a committeeman. "Do you support the President's policies in Vietnam?"

"Sure, sure," said Mr. Murdlee. "Let's see, I seek no wider war and I think the Asian boys should do their own fighting."

"Great scott, Murdlee, you're supporting the President's 1964 policies: We're looking for an

up-to-date policy supporter for this job."

"Sorry, sir," said Mr. Murdlee meekly. "Give me another chance."

"Well, then, do you see Khe Sanh as the important western anchor of our northern defense perimeter, guarding, as it does, five major infiltration routes, and thus worth defending to the last man?"

"That sounds like a trap," said Mr. Murdlee suspiciously, but he quickly added: "I mean the question."

"What about the President's decision to reactivate the Battleship, New Jersey?" asked a second committeeman. "Do you feel the cost accounting factors governing naval shore bombardment justify the expenditures and risks?"

"Wait," said another. "Ask him first his tactical evaluation of redeploying the Air Cavalry Division north to I Corps area, thus depleting II Corps area, but at the same time. . ."

So it went. Mr. Murdlee appeared to be holding his own by simply nodding vigorously. Unfortunately, he refused to support the President's recent decision to call up 15,000 reserves, stubbornly insisting that 13,237 would have been, by his evaluation, adequate.

He was, of course, summarily ushered out of the hearing room and the job was given to a deaf-mute plumber with a stiff neck which permitted him to nod his only up and down.

As for Mr. Murdlee, he returned home and immediately changed his registration to Republican.

He was asked if he felt he could support the Republican Party. "They don't have an exact," he said com-

Problems — Answers

TREADING LIGHTLY

By Bill Peters, Managing Editor

Should 'Sidelines' Change Policy?

As a member of the SIDELINES staff, it has recently come to my attention that a policy exists which states, in effect, that even though a student's name is requested to be withheld from publication by the student, the staff must release that name if any interested party wishes to know the source.

This policy does release the SIDELINES from any protective responsibility to the student, but this is the point of the matter. Any student should have the right to express his views or criticisms through such letters to the editor of the SIDELINES. However, when these views are in opposition to school policy, the administration, the faculty or the student body as a whole, the person submitting the letter may be subject to unnecessary harassment from the party concerned.

A recent letter concerning needed improvements in campus postal service, according to the student, is the specific question around which this controversy evolved. Officials of the postal department have contacted the editor of the SIDELINES in order to learn the name of the person who submitted the letter.

As the present policy stands, the editor must release his name. However, it is now under consideration to change this policy in order to protect the student from any harassment.

This writer believes that the SIDELINES is a student paper, and should contain news and opinions of students for other students to read. Thus, I believe that the SIDELINES should assume the position of giving students of this university, not college, a free and unbiased marketplace, without yielding to pressures from higher authorities, in which students can offer either praise or constructive criticism. By the way, there is the possibility that the postal staff will try just a little harder to give students more efficient service.

MTSU has as its motto "The University of Individual Opportu-

nity" and the present SIDELINES policy may hinder students who have suggestions or criticisms which may improve the university, its policies or the atmosphere in which we live. This individual opportunity should be given to all students, regardless of their opinions or convictions.

Thus, in my opinion, the SIDELINES should protect students from any harassment, and, at the same time, maintain a responsibility to other students, who may or may not agree, by publishing such letters.

Name Withheld by Request

Disappointment With University Center; Image Destroyed

To the Editor:

My image of your beautiful new Student Union has been destroyed! It was barely a week ago that I visited the open house and admired the new bookstore, the big grill, the modern lounge, and the well equipped recreation facilities. But it has now become obvious that beauty is only skin deep — it is there only to distract my view from the ugliness inside some of the students. Let me explain. . .

Last Saturday night my college blazer was stolen from the Union. It had been hanging in the coat rack across from the poolroom for less than three minutes. Whoever took it probably thinks it was a very funny prank; I fail to see the humor in such a complete lack of respect for the property of others. A college education is worthless if the graduate has no knowledge of basic human dignity.

I'm offering a reward for any information which leads to the recovery of this blazer. It is a black wool sport jacket with gold buttons and a green seal on the

pocket which reads "Princeton Elm Club." If anyone has information regarding this please put it in Post Office Box 660.

I hope that most of the MTSU students are more grown up than to think the proper way to treat a visitor is to steal his coat. If they're not, they show the new Union to be nothing more than an undeserved (but perhaps much needed) facade.

Randall L. Hurlburt
Tullahoma, Tenn.

Student Commends

Brooks Editorial

To the Editor:

I would like to extend my congratulations to Sylvester P. Brooks on his superb editorial, "The American Negro" published in the March 18 edition of the SIDELINES. Mr. Brooks expressed so beautifully what needs to be understood so badly — the Negro wants to feel that he belongs in America.

To coin the inverse of an old cliché, I feel that the students and faculty should "give the young man a great big hand." Again, congratulations for an interesting, thought-provoking, and truthful article.

Sharron Wood

FLOWERS FOR ALL OCCASIONS — CALL

RION FLOWER SHOP

107 W. College
Phone 893-7134

Night
893-7973 - 893-4607

HOOVER PAINT STORE

Picture Frames
Wall Paper - Glass

107 W. Lytle St.
893-5756

Monogramming Service

Also
Sorority and Fraternity Service

Ginger Powell
118 W. Vine
896-3401

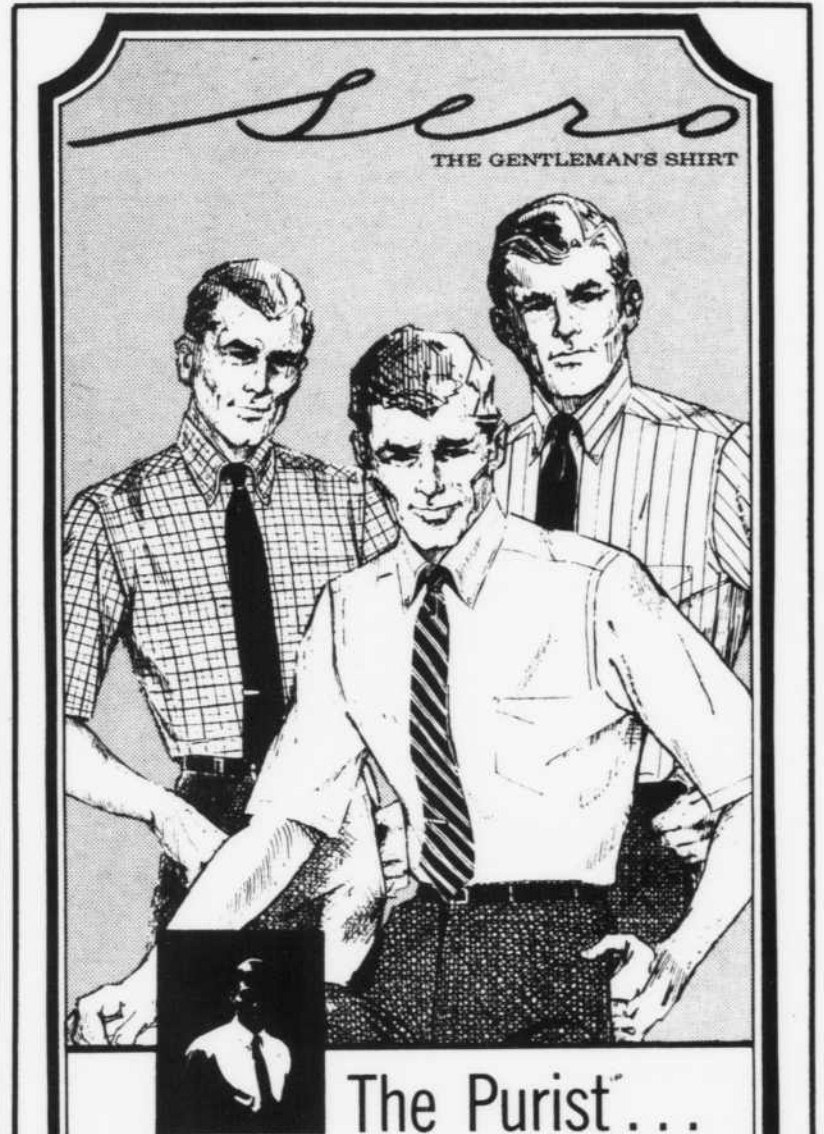


Dipper Dan ICE CREAM SHOPPE

Jackson Heights Plaza
Phone 896-3330

- Black Cherry
- Green Mint Chip
- Peppermint
- Pistachio Almond
- Pineapple
- Vanilla Orange
- Butter Pecan
- Tahitian Sherbet
- Pink Lemonade
- Rocky Road
- Peach
- Neapolitan
- Orange Pineapple
- Coffee
- Chocolate Marble
- Butterscotch Marble
- Banana Cherry Nut
- Strawberry
- Banana
- Vanilla
- Pumpkin
- Egg Nog
- Spumoni
- Cherry Chocolate Chip
- Rum Raisin
- Maple Chocolate Almond
- Raspberry
- Strawberry Freeze
- Lemon Custard
- Orange
- Lime
- Caramel
- Rainbow Sherbet
- Bubble Gum
- Tutti-Fruitti
- Peruvian Bomb
- New York Vanilla
- Licorice
- Dipper Dandy
- Coconut Pineapple
- Chocolate Chip
- Black Walnut
- Almond Chocolate Chip
- Vanilla
- Chocolate
- Buttered Nut
- Apricot Sherbet
- Apple Pie
- Coconut Almond
- Chocolate Marshmallow
- Candy Cane
- Red Cherry

FOR THOSE WHO LIKE REAL ICE CREAM



THE GENTLEMAN'S SHIRT

The Purist...

Choice of the Collegian

Sero champions the traditional look on college campuses across the nation with its full-flared Purist® button-down. Styled exclusively for the collegian... trimly tapered with a seven-button front for a neater, slimmer appearance. A host of new spring colorings and patterns in distinctive tattersals, checks, stripings and solids. Classic shirtmanship at its finest.

AVAILABLE AT

The MEN'S SHOP

119 North Maple St., Murfreesboro, Tenn.

Track Team Hosts Taylor University

Singleton, Jones Expected To Lead Raider Effort Today

MTSU's 1968 track team will make their dual meet debut this afternoon when they host Taylor University of Upland, Indiana. Starting time will be 3:00 p.m. All but two members of last year's team, which finished fifth in the Ohio Valley Conference and second in the Tennessee Intercollegiate meets, will return for another season. Leading the way for coach Dean Hayes' cindermen will be OVC 440 yard dash champion, Jerry Singleton, and OVC intermediate hurdle king Don Jones.

Jerry Singleton, Chicago, Illinois junior, is ranked 7th in the nation in the 600 yard run indoor with a time of 1:10.9 and 12th in the 440 indoor with a time of 49.0.

Other boys that Hayes is counting on for consistent point production are Charlie Dahlgren, the former Nashville East star, in the mile and three-mile, Mike Stevens in the pole vault and high jump, Lonell Poole in the hurdles and dashes, and Howard Yates in the 880.

Three members of the MTSU varsity basketball team will also be expected to pick up quite a few points. Ken Riley will throw the discus, Terry Scott and Stan Sumrell will compete in the triple jump, and Sumrell will also run the high hurdles and broad jump. Steve Colquit, a football player, will throw the javelin for the Raiders.

Talented newcomers should aid the team's overall strength quite a bit. David Wyatt ran for Singleton in the 440 yard dash in the Indiana Relays this past weekend and grabbed second place. He is also a good hurdler. Butch Ed-



1968 MIDDLE TENNESSEE STATE TRACK and FIELD TEAM opens today as host to Taylor University of Upland, Indiana. .L-R, Row 1: Bill Sharp, Lonell Poole, Mike Bailey, Mike Stevens, Phil Gardner, Don Jones, Steve Barrett, Pat Lynch, Pat Hughes, and Dave Wyatt. Row 2: Randall Brady, Dennis Bandy, Terry Scott, Steve Colquitt, Ken Riley, Charles Dahlgren, Stan Sumrell, Jerry Singleton, Jon Edwards, and Howard Yates.

Henry Drug Co.

1529 E. Main St.
— Just Off Campus —

"Complete Drug Service"

COSMETICS
Phone 893-7783

THE COFFEE SHOP

Featuring the
M.T.S.U. Lotta Burger 45¢

The Complete Hamburger

COLLEGE HEIGHTS

Next to Keen Cleaners

8 A.M.-11 P.M.— 7 Days A Week

wards will throw the shot and discus for MTSU, while dashmen Bill Sharp and Dusty Hughes will attempt to shore up a Raider weak spot last season.

MTSU's mile relay team was a winner at the Indiana Relays on Saturday and coach Hayes is looking for some record times from the quartet composed of Hughes, Wyatt, Dennis Bandy and Singleton.

IM Report

Thursday night March 14, starting at 6 p.m. the Intramural Basketball Organization held eight intramural games.

In the fraternity league Alpha Psi defeated Sigma Tau Omega 62-51. "This was the biggest game of the night. I have never seen such good spirit in a basketball

game," stated Eddie Foster, Gladeville senior, student director of the Intramural games.

The results of the games were:

- Projects 53 - Skulkers 28
- Wheel Knots 103 - Phi Epsilon 38
- Cats 72 - Celtics 26
- Sooners 18 - Colt's Ass 59
- The Anythings 2-Tumbleweeds 0
- The Other Team 47 - The Village Square 39
- Sigma Tau Omega 51 - Lambda Psi 62.

Committee Rejects...

(Continued from Page 1)

Another screening will be conducted in May of this semester.

Of the students participating in the last screening, 144 were interviewed under the secondary school program. Of these, 39 were either rejected or permitted to enter the program providing their grade point average were brought up to the present standard of 2.15. In the elementary school program, 33 students were screened. Of these, 46 were rejected; and three required further evaluation of their records.

The Screening Committee has been up grading the grade point average necessary to enter the Teacher Education Program over the past four years, according to Joseph Sakas, secretary of the Screening Committee.

The initial average was 2.0. It was then raised to 2.1, 2.15, and will be 2.25 this fall.

SCRUB-A-DUB

Coin-Operated Laundry
Dry Cleaning

We Never Close
Mercury Plaza — 893-9681

"We Wash, Dry & Fold at No Extra Cost"

THE SANDPIPER DISCOTHEQUE

DANCING — REFRESHMENTS

(Pizza - Sandwiches - Cokes)

THURSDAY
MARCH 21

The Kandy Stripe Strips
6 P.M.-10 P.M.
Admission 75c

FRIDAY

MARCH 22

The Feminine Complex
8 P.M.-12 P.M.

SATURDAY
MARCH 23

The Squires
(They Have Played For Name
Artists — James Brown)
8 P.M. - 12 P.M.

200 Lowry Street
Smyrna

Enter Through The Back

For Special Group Arrangements
Call 459-4125 or 459-6555

Admission Friday and Saturday
\$1.50 Non-Membership
\$1.00 With Membership Card

Membership Card May Be Bought At
The Door For \$2.00 For 1 Year

SUMMER JOBS

Over 30,000 actual job openings listed by employers in the 1968 Summer Employment Guide. Gives salary, job description, number of openings, dates of employment, and name of person to write. Resorts, dude ranches, summer theatres. United Nations, national parks, etc. Also career oriented jobs: banking, publishing, engineering, data processing, electronics, accounting, many more. Covers all 48 states. Price only \$3, money back if not satisfied. Our fifth year!

University Publications—Rm. H 767
Box 20133, Denver Colo. 80220
Please rush my copy of the 1968 Summer Employment Guide. Payment of \$3 is enclosed.

Name _____
Address _____

Physical Education Club Will Present Tumbling Demonstration

Members of the Physical Education Club will present a tumbling demonstration at the student section of the Health and Physical Education division of the Tennessee Education Association meeting in Chattanooga April 4 and 5.

Approximately 15 students will perform in the University of Chattanooga's McClellan Gym for the annual assemblage, according to Buleah Davis, sponsor of the PE Club.

Intramural Report

One of the 14 teams in women's intramural basketball has a perfect record. That team, the Revised Editions from league 1, has a 3-0 slate.

In league 2, Phi Theta Psi is tied with Delta Pi Delta. The winner of this league will be decided when these two teams clash Monday, March 18, 5:45 p.m. Winners of the two leagues will play Wednesday, March 20, 5:30 p.m. This game. This game will decide the championship.

Intramurals will be played in softball. Anyone who is interested in forming a team should submit a list of at least 15 girls to Miss Landreth, Box 392, by March 29. No team will be allowed to have over 7 health and physical education majors.

Singles and doubles will be played in tennis. All girls who are interested may submit their names to Miss Landreth. The deadline for tennis entries is also March 29.

Captains of softball teams and all girls who wish to play tennis are to include their post office box numbers and telephone numbers when submitting their names to Miss Landreth.

Turner Teaches Experimental Class

Jack T. Turner, instructor in Political Science, is teaching what he calls an "experimental class" in international relations, International Relations 422. The class is divided into geopolitical regions with students representing the foreign policy of individual countries.

He explains that the reason he has students represent the various countries is that it involves them emotionally with their countries they represent, as well as teaching them the basic policies. He feels that through this emotional involvement students can come closer to understanding the true nature of foreign policy. Each student is required to learn as much as possible about the country he represents and present its foreign policy to the class. Approximate times allowed to each country are determined by Turner on the basis of the importance of the country currently on the world scene and in light of the amount of time in classes that the course provides.



RECORD HOLDERS—Jerry Singleton (left) and Don Jones hold school and OVC records in the 440-yard dash and intermediate hurdles respectively. They will be in competition Thursday when MTSU opens outdoor track season against Taylor University of Upland, Ind.

Turner said the students first present an objective view of foreign policy they represent and then take on the personality of their country and defend their position as best they can in view of world criticism from the rest of the class. The class is actively involved all the time, as each student represents a minimum of two countries and as many as five, depending on their relative importance (except Red China which carries enough course point to preclude the student's involvement

in another country), as determined by Turner.

Turner related that after the original class was informed of the strenuous requirements many dropped. When the class stabilized, countries were assigned.

The whole idea behind this class could possibly be a challenge to other instructors on the campus to produce a class that so involved the students and from which they benefit so much related a veteran of Turner's challenging classes.

IF THE
SHOE FITS

FAST
SERVICE

... REPAIR IT!



Come In For Expert Attention
SATISFACTION GUARANTEED
MARTIN'S SHOE REPAIR
AND SALES—25 S. Side Square

**MURFREESBORO
BANK & TRUST CO.**

"The Raider Bank"

Since 1911

School Spirit A Must

By Lee Farless

There are approximately 6500 students at this university at the present time and not all of them participate in the active support of the Blue Raiders at all in any sport. In fact only 30% of the students enrolled here have been to any kind of a contest in which the Raiders have participated. This is a gross injustice to the Raiders!

The spring season is here and now is the time for baseball and track and field events. If you have not seen any of this university's teams in action, do so now and you will see one of the best golf, baseball, track and field teams in the entire OVC. Do not forget to see the schedule of the up-coming tennis events and make plans to attend them. Your support would be gladly welcomed and justly deserved.

The activity of MTSU students in the role of school spirit is very lax and at most irresponsible. This past year there has been more of the true nature of school spirit than in the past. But this is far from the capacity of this university to say the least!

The fraternities of MTSU showed their school spirit at the basketball games and also at the football games. A majority of the fans at any of these contests have been the fraternity and sorority social organizations. This is a fact of which I am aware. ARE YOU? This is a saddening fact and I hope that all of the free independents will make their appearance known to all concerned. I am not belittling these people but making a fact known to all.

If you go through the entire year of your residence at MTSU without seeing any of the fore-mentioned sports then you have missed one of the best parts of your college career. You would not want to do that — Would you?

To use an old cliché — "Now is the time for all good Raiders to come to the aid of their UNIVERSITY SPORTS."

Kennedy...

(Continued from Page 1)

Julian Bond; conservative editor William F. Buckley, Jr.; former attorney General, present under-secretary of state Nicholas Katzenbach; radical editor Jack Newfield; New York's Mayor John Lindsay; and intellectual Max Lerner.

These speakers will appear in the Impact symposium proper, held April 5-6. Kennedy's speech is the first pre-symposium address in Impact history.

**COLLEGE
HEIGHTS
BARBER
SHOP**

Monday - Friday
7:30 A.M.-5:30 P.M.

The ultimate:
A Zale
Diamond
Solitaire



\$195



\$100



\$295

CONVENIENT TERMS

ZALE'S
JEWELERS

Illustrations Enteger
5204-12

MERCURY PLAZA SHOPPING CENTER

Fisher's

STORE FOR MEN
AND BOYS

Quality Clothes At
Popular Prices
West Side of Square
893-3343



Rosemary Escue, 1968 Miss MIDLANDER, and Mrs. Peggy Trickey, 1953 Miss MIDLANDER.

Midlander Queens Contrasted

By Linda Seigler

The MIDLANDER Beauty Pageant originated at MTSU in 1953. The solitary purpose was to bestow on some deserving young woman the honor of being entitled Miss MIDLANDER in the annual. The judge, a cartoonist of California, selected the queen from pictures of the contestants which he received by mail. Tension and suspense, so traditional among beauty contestants, reached a dramatic climax at the MIDLANDER Ball held in the Tennessee Room when Mrs. Kenneth Trickey was crowned the very first Miss MIDLANDER. A freshman at the time, Mrs. Trickey experienced all of the glamour and excitement so typical of any beauty queen, in spite of the simplicity of the proceedings. Incidentally, at the moment Mrs. Trickey is experiencing the untold glamour and excitement of being wife, mother, and graduate assistant working on her Master's Degree at MTSU.

As Middle Tennessee State blossomed from College to University, the MIDLANDER pageant was affected by vast revision. Along with beauty, several judges now appraise personality, poise, and talent; thus, the single-picture judgment era has given way to a more complete, inclusive estimation of well-rounded beauty.

Rosemary Escue, our reigning queen, experienced two weeks of

hectic rehearsals and preparation. Rosemary, a 19 year old freshman, was elected to represent the Track and Sabre Club as a contestant. To Miss Escue, "it was all a dream," as she captured the hearts of the judges and walked away a queen with an armload of roses, a trophy, a crown, and a chance to contend for the highly esteemed title, Miss Tennessee, during July in Jackson.

Miss MIDLANDER is an English major, an ROTC sponsor, and a pledge to Alpha Gamma Phi.

Mademoiselle's Next Word On The Belted Waistline

Fasten your belts, girls; fashion's heading toward the waist land. The dominance of the A-line is over. Why change from such an easy way of dressing? The dirndl skirt, 1968 is the reason.

The dirndl skirt is bouncy, pert, and more fun than the ever classic A-skirt. Its body-fitting beauty may be handsomely tailored or charmingly romantic to suit your mood.

Accessories are more interesting these days too: wide ties, bright big scarves, chunky shoes, and — you knew it was coming — wide and narrow belts of leather, suede, elastic, and ribbon.

What's to be done now that you're going to show you have a waist again? Fortunately, the waist is one area of the body that responds quickly to efforts to reduce it.

Elizabeth White, MADEMOISELLE Beauty Editor, suggests a two-part waistline campaign. Diet and exercise, the usual means of reduction, are most likely to gain results.

The thing to remember is that this campaign works. The waistline is very susceptible to determination.

Only a month and you'll be in the waist land; two months of campaigning and you'll be a full-fledged citizen. You'll be eligible for a whole new world of body-fitting fashion.

Maintenance Building Construction Seen

Construction of a new six-unit maintenance complex has been started according to President Quill E. Cope. The complex will consist of a small administration building and other buildings which will house shops for the various phases of the maintenance department.

The complex will be located just off Greenland Drive.

Young Artists Recital To be March 19

The first spring semester Young Artists Recital will be presented in the Fine Arts Choral Hall Tuesday, March 19.

Participants will be Carl Jones, trombonist; Bobby Carpenter, trumpet soloist; Joyce Kesner, contralto; Gerald Catts, tuba soloist; Philip Waters, saxophonist; Carl Barnes, horn soloist.

James Ledbetter, saxophonist; Lenelle Marable, trombonist; Linda Mitchell, trumpet soloist; Brenda Anderson, soprano; Sandra Smith, pianist; Lynn Moore, tuba soloist; and Eric Starks, saxophonist.

Accompanists for the performances will be Iris Starks, Ann Jackson, Gayle Sadler, and Ann Moss.

**Lambda Psi
Open House
Sunday, Mar. 24
1418 E. Main St.
'Everyone Invited'**

**BEH-RENS
BAR-B-Q
728 West College St.
Open 10:30 A.M.-
7:30 P.M.
PLATTERS - TRAYS
SANDWICHES
PIT - COOKED**

A. L. SMITH and CO.
RICHARD B. DOUGLAS — Owner, Pharmacist
● Prescription Druggists ● Hollingsworth Candy
Corner Main and Public Square — Ph. 893-7971

Murfreesboro Bowling Lanes

Special Student Price - 3 Games

\$1.25

Includes Shoes

Redecorated, New Modern Lanes

941 N.W. Broad

896-0945

Open 9 A.M. - 11 P.M. Monday-Thursday
Friday and Saturday Open Until 12 P.M.

Look here, Wrangler®-philes



Sure you love your Wrangler® Jeans. But it's time you learned that Wrangler makes sportswear with the same knowing touch that's made you the Wrangler-phile you are today. Permanent press plaid shirt with soil release finish. Blue, bone, green \$5. Canvas weave jeans in blue, whiskey, loden, banana, \$4.50. Snap-front, 30-inch jacket. Washable, water-repellent. Navy, red, green, \$6.

Wrangler® Sportswear

Remember the "W" is silent!

GIBSON'S

Murfreesboro, Tenn.

STAMP IT!



IT'S THE RAGE
REGULAR
MODEL

ANY \$2
3 LINE TEXT

The finest INDESTRUCTIBLE METAL
POCKET RUBBER STAMP. 1/2" x 2".

Send check or money order. Be sure to include your Zip Code. No postage or handling charges. Add sales tax.

Prompt shipment. Satisfaction Guaranteed

THE MOPP CO.

P. O. Box 18623 Lenox Square Station
ATLANTA, GA., 30326