



The SIDELINES

VOICE OF MTSU, THE UNIVERSITY OF INDIVIDUAL OPPORTUNITY



Volume 39—No. 8

Middle Tennessee State University, Murfreesboro, Tennessee

Tuesday, November 16, 1965



THE TAMING OF THE SHREW is rehearsed by Buchanan players Rebecca Salisbury and Douglas Vaughn.

First Drama Club Play Runs Nov. 17-19

by Tony Pendergrass

Shakespeare's THE TAMING OF THE SHREW, which is to be presented November 17, 18, and 19 by the Buchanan Players, is now in its final stages of preparation. All MTSU students will be admitted free upon presentation of their I.D. cards. All seats are reserved and free advance tickets may be obtained in the main theater of the D.A. building. Adult tickets for non-students are \$1.50 each. Season tickets which are good for all four productions of the year, three plays and an opera, are being offered to faculty and staff members for \$3.00. Curtain time is 8:00 p.m. each night.

For those who are not familiar with the play, the SHREW is a rowdy, robust comedy which is colorful and fast moving. The scenes blend together easily, and when coupled with the excellent lighting and staging facilities adds much to the play's appeal to the audience. There are 21 members of the cast with Doug Vaughn and Rebecca Salisbury playing leading roles of Petruchio and Kate. Linda Brunaski and Richard Boutwell play the roles in the secondary love counterplot, while John Bradley and Jack Gilpin, as the servants, add extra comic relief to the already riotous play.

The Buchanan Players will play host to a number of drama groups from the middle Tennessee area at the Tuesday dress rehearsal

Vietnamese Soap Drive Sponsored By Sophomores

The Sophomore Class will sponsor throughout this week a campus-wide drive to raise 5,000 bars of soap for the people of Viet Nam. This drive is aimed toward retaliation of unfavorable publicity that college-age students have received throughout the nation due to a minority in opposition to the American defense of Viet Nam.

Boxes will be placed in each dormitory and major building on campus for student and faculty convenience in donating this soap.

The drive at MTSU originated with Linda White, sophomore senator, who recognized an official request for soap for the Vietnamese people. The drive supports the National Student Committee for the Defense of Viet Nam located at Georgetown University. This committee is presently urging college campuses to engage in a series of rallies from now until December 10 in support of American policy. One such

Taylor Speaks

Dr. Hunter Taylor of the University of Georgia Law School will speak to the Pre-law Club at its regular meeting on November 18. The lecture will be held in Room 316 of Old Main at 4 p.m. His topic will be "The University of Georgia Law School and the Problems One Faces in Law Schools." Anyone interested in law is invited to attend this meeting and also to join the MTSU Pre-law Club.

Who's Who Honors Go To 32 Seniors

Thirty-two students at MTSU will be included in the 1966 Who's Who in American Colleges and Universities, according to last week's announcement by the selection committee.

These seniors were selected on the basis of high academic achievement, participation in extra-curricular activities, and good citizenship by a joint committee of faculty and students. Eligible students numbered 212 out of a 700 class membership.

Selected were Shirley M. Andrews, Charlotte A. Black, John M. Bradley, Richard J. Call, William Wallace Cantrell, III, Lucia B. Cordell, Pamela W. Corley, Barbara A. Freeman, Theresa J. Frey, Donna L. Grammer, James Daniel Holder, Stephen C. Jackson, Patricia F. Kyle, Sylvia O. Lauderdale, Rebecca I. Lovell, Marian O. McBroom, Gail R. Meadows, Elizabeth N. Moody, Barbara L. Moore, Marcia E. Norcom, Cheryl Shultz Pritts, Joseph Steven Renner, Bette K. Saunders, Judith Ann Schrichte, Susan E. Shanfield, Carlton R. Sivells, Harold C. Smith, Betty

Jane Spry, Gayle H. Tincer, Barbara D. Tipton, Bertram F. Wakeley, and Kathleen Gale Walker.

Pi Omega Pi Inducts 14 New Members

Fourteen business education majors were inducted into Gamma Chi chapter of Pi Omega Pi in the traditional initiation November 8. Pi Omega Pi, now a member of the National Honor Society group, receives into membership only those students of exceptionally high achievement who plan to enter business education.

Those honored were: Ruth MacMillan, LaScassas; Carol Call, Hixon; Monty Thomas, Chattanooga; Judy Hines, Fayetteville; Paula Gaines, Hendersonville; Sharon Kilpatrick, Lawrenceburg; Sara Pettit, Murfreesboro; Helen Thompson, Chattanooga; Nancy Ann Cooper Bowling, Morrison; Joan Stewart, Antioch; and Paul-ette Farror, Fayetteville.



LINDA WHITE, sophomore senator, presents President Cope, the first contributor of a bar of soap for the Vietnamese, a badge bearing the slogan of the drive, "Dignity Thru Cleanliness."

THE SIDELINES

Published weekly by the students of Middle Tennessee State University, Murfreesboro, Tenn. Entered as second class mail matter at the Post Office at Murfreesboro, Tennessee, under Act of March 3, 1897. Represented for national advertising by the National Advertising Service, Inc.

EDITORIAL BOARD

Ann Norman	Editor
Bette Moody	Business Manager
Linda Duke	Feature Editor
Butch Rutherford	Sports Editor
Sara Lusty	Exchange Editor
Pamela Owen, Gerry Pekala	Club News
Jim Miller	Circulation Manager
Jim Norton	Photographer
Nelda Mantooth	Copyreader

STAFF: Cheryl Allen, Elaine Barnhill, Rebecca Yates, Jan Blair, Dick Call, Judy Close, Delores Duke, Olivia Flynn, Tom Foster, Faye Gilispie, Bill Lewis, Ellen Martin, David Mathis, Rita McWhorter, Tony Pendergrass, Marilyn Pierce, Nancy Ridge, Dolly Rose, Linda Willis, Paul Womack, Bennic Jones, Tim Rudolph, Lloyd Widner.

World's Largest High School?

MTSU has been referred to as the world's largest high school. Had this reference been made only by embittered students, seriousness would not be implied. However, an increasing number of professors have made such reference this semester and time arises for evaluation.

What are the reasons behind such a label? How do they conflict with our University status? What can be done to destroy such a nickname?

The answer to the first question lies in a great many areas. It concerns the policies of the administration, and the faculty, and the attitudes of the student body as major areas. The part concerned with administrative policy goes beyond the mere accusations of the exercise of too strict discipline. It reaches into restrictions upon faculty members, the qualifications necessary to teach at this institution, and the general atmosphere promoted by the administrators to mention a few.

This labeling definitely interferes with our status as a University. The word "university" applied to some of these areas in effect sounds like a mockery.

No one article could attempt to answer each of these questions completely, so let's presently pose the problem of student attitude.

Ask a freshman why he is here and you will receive varied answers from "My parents sent me" to "So I can get a good job someday." Ask a senior why he's here and no doubt the words career or job will be found in his answer. Is the purpose of attending a university to be able to get a neat, well-paying job?

Students in lacking such concern will graduate with only an extended high school knowledge. The centers of intelligence, learning, creativeness must originate on university campuses. Much more than that presently exhibited at MTSU is to be gained from four years as a student.

Debate Club Enters Third Tournament

The MTSU debaters will participate in their third tournament of the year on November 19-20 at Carson-Newman College in Jefferson City. This is a novice tournament and participants will be Gail Colebrooke, Donna Galbreath, Sue Taylor, and Jack Whitson. Team No. 1 will be Carol Poole and Janet Brown. Team No. 2 will be Gary Bickford and Paul Fischer. Team No. 3 will be Bobby Conns and Richard Smith. The first tournament of the year

was at Mercer University in Macon, Georgia, on October 29-30. Twenty-seven colleges participated in this event in which MTSU's won-lost record was 7-5. Our representatives were Larry Barker, Paul Womack, Katie Petty, and Bob Freeman.

The second tournament was November 12-13 at Western Kentucky State College in Bowling Green. MTSU's contenders were Carol Poole, Janet Brown, Bob Freeman, and Paul Womack.

THE STUDENT'S VIEW

By Paul Womack

By Paul Womack

Within the last few weeks, there have been two protest suicides in this country involving the burning of the protestor. The first case involved a Quaker pacifist, Norman Morrison, who committed his protest burning at the Pentagon in Washington. The other involved a Roman Catholic, twenty year old Roger LaPorte, who committed his protest burning at the United Nations Building in New York.

I deem it justifiable to ask "why?" Death as a tool for a self-imposed martyrdom seems rather final for one who desires to work for world peace. A living worker for the cause of peace, it seems, could achieve more than one who willingly removes himself from the contemporary scene. I do not intend to castigate these two because of their action; I just see no point to it. In all probability, these two felt that their actions were justifiable, considering all the aspects involved. It may have been their hope that their actions would influence the living to find a way to world peace.

However, for most of those who seek peace a living sacrifice of toil is more desirable. But as stated, the point the two probably desired was to influence those of us who remain to seek peace. To me, their deaths seem tragic and pointless, for the fruitlessness, terror, and suffering of war itself provides a great enough emphasis for the quest of peace. A man must determine his relationship with society and his responsibility to society. As long as man has life, I believe it's better to work for such abstract causes as justice and peace. To purposefully end one's life subtracts from the total contribution that his life may make to the betterment of society (this assumption is fallacious to the extent that some lives would probably be better for society if they are short-lived). But when one has only the highest regard for his fellowman, he can achieve more by living a full life.

For those of us who are students, therefore, we may conclude that we must attack our college work with the greatest vigor. To deny our college work our fullest potential is to deny ourselves, as individuals, a fuller life; and indirectly perhaps deny society a way to a better life. Consequently, we must work diligently; our future depends upon it.

Seniors Reminded

There are many seniors who have not yet had their senior portrait taken for the MIDLANDER. There will be three make up days to have this done. They are November 18, 19, 20, a Thursday, Friday, and Saturday. Please call Delbridge Studio before November 18 for your appointment. Men please wear white shirt and tie. Women wear button-up blouse or dress. Please bring \$6.70 which covers your sitting, your annual print, and one 8x10, plus six wallet size pictures for your own personal use.

If your picture is to appear in the 1965-1966 MIDLANDER it is compulsory that a senior activity sheet be completed. This sheet can be obtained at the MIDLANDER office, Room 001, in the New Administration Building.

Kathy Walker
Senior Editor

Editorial Challenged

Editor's Note: The following letter was addressed to Bill Lewis through the SIDELINES in answer to Mr. Lewis' editorial of November 2. It was submitted by Russell B. Obenchain, a graduate student at MTSU.

"Some of the basic ideas in the scientific method have to do with such things as the gathering of data, testing, re-testing, verification of information, etc. Before making changes in procedures, these need to be carried out. For example, should a young engineer on a new job propose changes in a company's methods without making any studies or without data from previous company's benefit, he would be looked upon as a fool.

Now, you propose some changes in the "Antique Morality" of MTSU. From the abundance of your wisdom and from your many years of experience in this field, you feel qualified to class as "antique morality" that which has been tested for many years in the laboratories of human experience. We would like to have some statistics to show that your proposal will benefit MTSU. My wife and I have a daughter at MTSU; I am a graduate student in guidance and counseling. Since your proposal affects us, please publish our letter and your facts.

Will you please tell us what you have found in your studies of alcohol as a deranger of metabolism? Can you let us have the facts on the physiological craving induced by this agent? Can you cite us studies which will show us the beneficial biochemical effects of alcohol? Can you show us other studies that tell us of the lifting effects alcoholic beverages have on the morals of the users? Will it help us face the problems our generation with more understanding and with more clarity? With the highway death toll so high, can you cite statistics from the department of highway safety that will give us reason to believe that your proposal will be helpful in this area? Can you give us data from the files of the divorce courts and from family agencies which will demonstrate that your proposal will make homes happier?

Let us have testimony from judges, from other law-enforcement officers, from prison officials, from AA's, from highway safety officials, from family counselors, from widows and orphans made so by drinking drivers, from educators, from ministers, from physicians and medical researchers, and from DEANS of colleges that your proposal to allow student drinking at MTSU is for the improvement of the school.

You are the young "engineer" who proposed the change; let us have your "facts."

To The Students Of MTSU

Well, students, I see that you found the gym last Tuesday night for the Dick Clark show. For some of you, that will be the last time you will be there until the Lettermen are here on December 13. I attended the show and really enjoyed it; I feel that I got my money's worth, but I failed to see any members of our student body performing on stage that night. The people who performed did it for monetary purposes only.

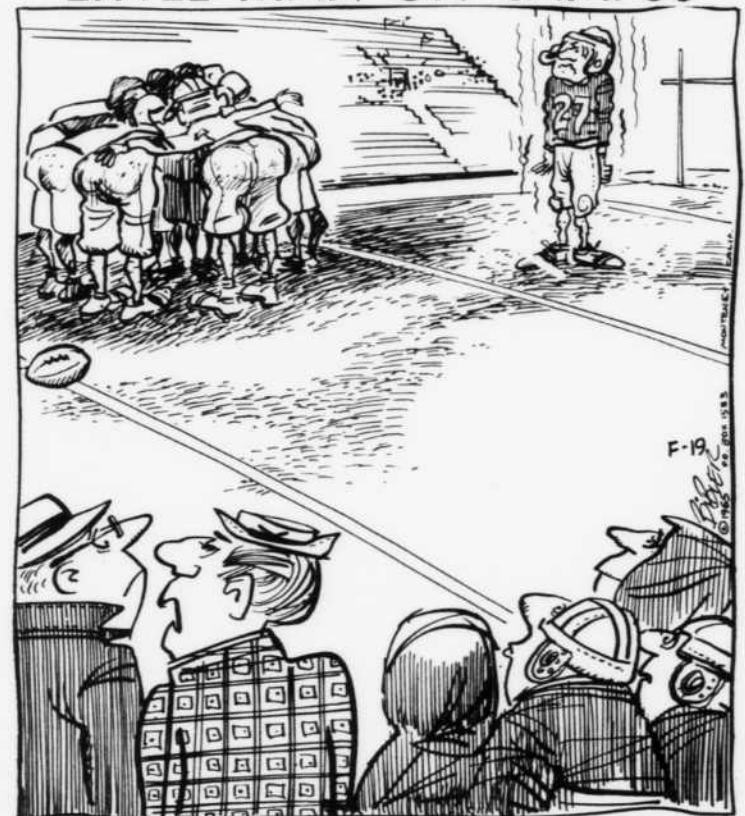
On December 2 the MTSU Blue Basketball team, under the direction of Coach Ken Trickey and his new assistant coach, Jimmy Earle, will open their 1965-66 season. Will you be there to see these students of MTSU perform? The entertainment they provide will be absolutely free, and when

they perform they will be representing YOU. They have had many tireless hours preparing for this; they have been practicing when most of us have not thought about getting up — six a.m. Sometimes they practice three times a day.

I have heard complaints that our gym is too small to accommodate our student body. Well, maybe if we fill the gym for our basketball games this year someone will start thinking in terms of a new fieldhouse. As of now, we have not shown a need for a new fieldhouse. We came close at the Dick Clark show! If you are willing to spend \$2.50 for that, why not see better entertainment FREE and provided by our Blue Raiders?

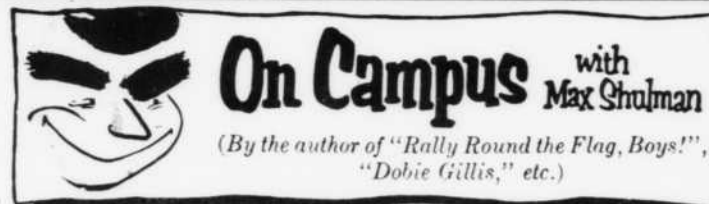
—Parker Sherrill

LITTLE MAN ON CAMPUS



"ED HAS DEVELOPED INTO OUR MOST POTENT BALL CARRIER, PREY-I HAVEN'T LET HIM TAKE A SHOWER ALL SEASON."

Sidelines Reporter Meets Caravan Stars



YOU, TOO, CAN BE INFERIOR

The second gravest problem confronting college students today is inferiority feelings. (The first gravest problem is, of course, the recent outbreak of moult among sorority house canaries.) Let us today look into the causes of inferiority feelings and their possible cures.

Psychologists divide inferiority feelings into three principal categories:

1. Physical inferiority.
2. Mental inferiority.
3. Financial inferiority.

(A few say there is also a fourth category: ichthyological inferiority—a feeling that other people have prettier fish—but I believe this is common only along the coasts and in the Great Lakes area.)

Let us start with the feeling of physical inferiority, perhaps the easiest to understand. Naturally we are inclined to feel inferior to the brawny football captain or the beautiful homecoming queen. But we should not. Look at all the people, neither brawny nor beautiful, who have made their marks in the world. Look at Napoleon. Look at Socrates. Look at Caesar. Look at Lassie.

What I mean is you can't always tell what's inside a package by looking at the outside. (Sometimes, of course, you can. Take Personna Stainless Steel Blades, for example. Just one glance at that jolly blue and white package—so bright and pert, so neat but not gaudy—and you know it has to contain blades of absolute perfection. And you are



right! Personna gives you so many shaves per blade it takes a math major to count them. And they are luxury shaves—smoother, comfortabler, kinder to the kisser. Moreover, Personna comes both in Double Edge and Injector style. And as if this weren't enough, Personna is now offering you a chance to grab a fistful of \$100 bills from a \$100,000 bowl! The Personna Stainless Steel Sweepstakes is off and running, and you're all eligible to enter. Visit your friendly Personna dealer today to get details and an entry blank.)

But I digress. Let us turn now to the second category—mental inferiority. A lot of people think they are dumber than other people. This is not so. It must be remembered that there are different kinds of intelligence. Take, for instance, the classic case of the Sigafos brothers, Claude and Sturbridge, students at a prominent Western university (Dartmouth). It was always assumed that Claude was the more intelligent just because he knew more than Sturbridge about the arts, the sciences, the social sciences, the humanities, and like that. Sturbridge, on the other hand, was ten times smarter than Claude when it came to tying granny knots. But no matter; everybody looked down on "Stupid Sturbridge," as they called him, and looked up to "Clever Claude," as they called him. But who do you think turned out to be the smart one when their granny almost got loose and ran away? You guessed it—good old Stupid Sturbridge.

We arrive now at the final category, financial inferiority. One way to deal with this condition is to increase your income. You can, for example, become a fence. Or you can pose for a life class, if your college is well heated.

But a better way to handle financial inferiority is to accept it philosophically. Look on the bright side of poverty. True, others may have more money than you have, but look at all the things you have that they don't—debts, for instance, and hunger cramps.

Always remember, dear friends, that poverty is no disgrace. It is an error, but it is no disgrace.

*** 1965, Max Shulman

Rich or poor, you can all afford luxury shaving—with Personna® Stainless Steel Blades and Personna's partner in shaving comfort, Burma Share! It soaks rings around any other lather and it's available in regular or menthol.

By Pam Owen

Last Tuesday night I had the privilege of spending five and one-half hours with the cast of the outstanding Dick Clark "Caravan of Stars" show. The 1965 Caravan, which consists of the MEN OF ACTION (Soul, Inc.), WAYNE McDONALD, THE RESULTS, BO DIDDLEY, THE BYRDS, WE FIVE, PAUL REVERE AND THE RAIDERS, gave two performances to very enthusiastic MTSU audiences.

Before the first show I met Jack Nance, manager of the road show (who, by the way, used to perform with Conway Twitty). He introduced me to Paul Revere (that's his real name), whose RAIDERS headlined the show.

Paul was the owner of a drive-in restaurant when he organized his group, known originally as "The Downbeats." Their first record, "Like Longhair," sold one-half million copies.

"The guys at the recording studio," Paul told me, "said I was foolish for not using my name as our trademark." Thus evolved Paul Revere and The Raiders.

This lively group, which is featured daily on "Where the Action Is," has no set routine when they go before the cameras.

"We just get out there and have a good time," the 24-year-old leader of the group said. "However, ABC censors some of our more active numbers on the basis that they're too 'violent'."

After a while Paul and I went backstage where he introduced me to the handsome lead vocalist of the Raiders, Mark Lindsay. I asked the 22-year-old Mark, who was a member of the original group, if his "pony tail" bothered him. "No," he answered. "It's in the back, and I never see it."

Later in the evening I met the other Raiders: Mike Smith, 21, drummer, who prefers to be called Smitty; Phil Volk, 19, bass guitar, who is nicknamed "The Fang," Paul informed me, because he "has a slight molar problem"; Drake Levin, 19, lead guitar, who told me he was from the South ("South Chicago, that is," he said with a grin).

Of course I enjoyed talking with the different stars, but it was also quite interesting to watch them backstage during the shows.

When the show started with the swinging MEN OF ACTION, the other performers gathered in the wings of the stage and watched with the same interest of those of us who had never seen the acts before. The Men of Action



PAM OWEN, SIDELINES reporter, is shown during an interview with members of two of the groups of the Dick Clark Caravan, THE BYRDS and THE RAIDERS: Kneeling, Paul Revere, Jim McGuinn; standing, Gene Clark, Pam Owen, Phil Volk.

played for WAYNE McDONALD and THE RESULTS, a pair of singing sisters, who look enough alike to be twins.

Next came the Big Beat sound of BO DIDDLEY and his rocking aggregation, which included his half sister, THE DUCHESS.

The BYRDS, who barely knew each other a little over a year ago, performed next, proving why they have achieved such fame. The group, composed of: Jim McGuinn (lead guitarist), who has played with Bobby Darin and the Chad Mitchell Trio; Gene Clark (vocal, harmonica, tambourine), a friendly young man who was formerly a New Christy Minstrel; Dave Crosby (rhythm guitar); Chris Hillman (bass guitar), a quiet, sad-looking, yet extremely talented musician; and the good looking drummer, Mike Clarke, bring to the music world an exciting new sound of their own.

WE FIVE (Mike Stewart, Beverly Bivens, Pete Fullerton, Bob Jones, and Jerry Burgan), are a group of such outstanding talent, that it was no surprise to anyone when the audience called them back for an encore at the end of their act. "You Were On My Mind" exemplifies this group's Thought and Soul brand of music.

The final performance of the evening was given by the wacky and wonderful PAUL REVERE AND THE RAIDERS, Dressed in their colonial garbs, the Raiders, who released a new record last week, set the audience to rocking with their zany antics and foot-stomping music. The grand finale of the show was a "birthday party" for Smitty followed by the Raiders' smash hit, "Stepping Out."

At the end of the evening I thanked Paul Revere for being so nice and helpful.

"Of all the stars I have ever interviewed," I told him, "you guys have been the greatest!" He answered, "Well, maybe that's because we aren't stars."

Bloodmobile To Be In Town Fri.

MTSU students will have an opportunity to donate blood at the visit of the Bloodmobile in Murfreesboro Friday, November 19, from noon until six o'clock in the evening. The Rutherford County Hospital Auxiliary is sponsoring the visit. The annual ROTC drive on the MTSU campus will not be conducted until February 1966. The Bloodmobile will be at a new location on Friday. The downtown merchants' lounge on the north side of the town square will be the site.

Fisher's

STORE FOR MEN AND BOYS

Quality Clothes at

Popular Prices

West Side of Square

893-3343

SHACKLETT'S RESTAURANT

121 E. Main

205 N.W. Broad

Wherever You Are — Shacklett's Is the Place.

A. L. SMITH and CO.

- Prescription Druggists
- Hollingsworth Candy

Corner Main & Public Square — Ph. 893-7971

The Center For All Drug Needs

is at

Stickney and Griffis
Drug Store

ALSO

Russell Stover Candies

PHONE 893-4682

Jose Mendez Tells Of Adjustments To MTSU

By FAYE GILISPIE
"Attending classes with girls," was the reply that Jose Mendez gave when asked about the adjustments that he had to make in America. Jose hails from Panama City, Panama, where he attended

a private high school and later worked for the Pan American Airlines before coming to the United States. He has been at MTSU three years and is majoring in international relations. After obtaining his masters degree, Jose plans to

return to Panama, where his uncle is the president, and work in the Diplomatic Corps. He hopes that one day he will be able to set up a scholarship program between his country and MTSU.

Snow and football were two of Jose's many new experiences. "The first time I saw snow I went crazy and started throwing it all over myself. I had never felt it before, and it was a new and great experience."

Football was new to Jose, also. He enjoys attending the games and considers them very interesting. Baseball was his favorite sport in Panama, and he was the pitcher for his team. In addition to sports, he likes to read history and listen to classical music. Jose doesn't consider life in America very different because of the great influence that America has in Panama.

However, Jose did find America dating customs quite different. In Panama a girl has to be at least eighteen or twenty years old before she is allowed to date a boy alone. The girls go out in groups and when a boy asks one girl out he must take all her girl-friends along, too. Usually in three months the couple is allowed to go out alone. In the meantime, they meet at the show or at their favorite eating place. Jose soon solved his problems by adopting the outlook of "In Rome do as the Romans, and in America do as the Americans".

Jose has an active part in school activities. He is president of the International Students Club, and he is considered "a father" to the international students. He is also a member of the C.C.U.N., and last spring he attended the C.C.U.N. China Conference at Harvard University. His face is a familiar one at many campus activities.

"BIG HEARTED" BOBBY'S DOGHOUSE

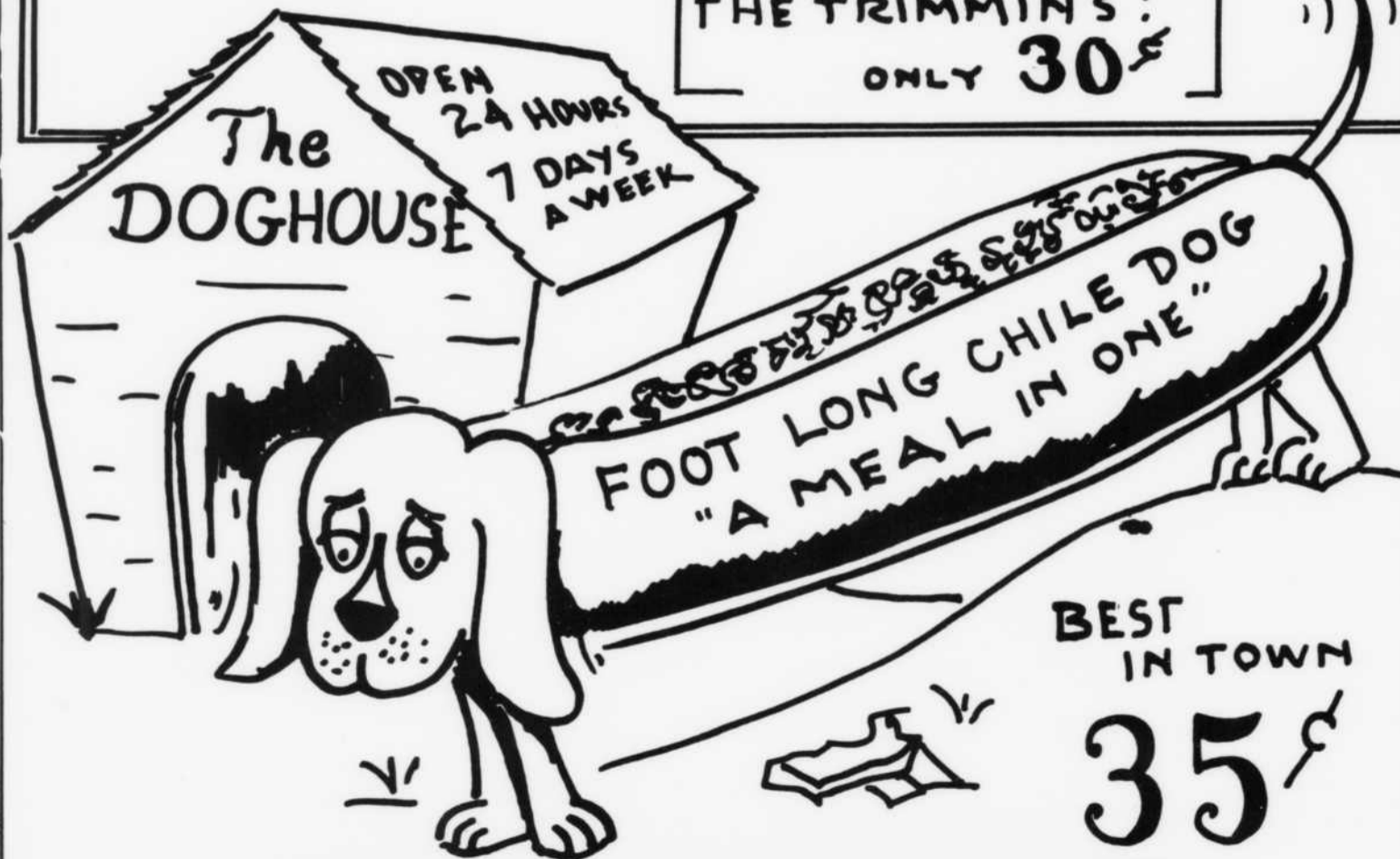
234 S.E. BROAD STREET
Phone 893-9625

17 VARIETIES OF DELICIOUS SANDWICHES

- PIT COOKED BAR-B-Q
- ICE CREAM • SHAKES
- MALTS • SUNDAES
- COLD DRINKS

- SNOW BALLS • COTTON CANDY
- CORN DOGS • CHILE BURGER

**BEST HAMBURGER
IN TOWN WITH ALL
THE TRIMMIN'S!
ONLY 30¢**



**BEST
IN TOWN
35¢**

FREE!-FREE!
FREE DRINK With Any Sandwich In House
With This Ad

Look For Colored Slads On Front _____ Formally Stuart's Root Beer Drive-In

Church News

Last week the BSU students were faced with an important problem — the loss of their director Rev. Clyde Kimble. Rev. Kimble has been at MTSU for two years and four months. He now feels that he must accept a position as chaplain for the U.S. Navy for the next three years. He and his family left for Rhode Island last Thursday to receive further orders. The BSU presented Rev. Kimble with a Gruen watch at Vesper services Wednesday night. A temporary director will be named until someone assumes the position in January.

Each Thursday night the BSU choir rehearses from 8:00 until 9:00. Marion Wells, choir director, is an instructor in the MTSU Biology Department; and he is also minister of music at Smyrna, Tennessee. All voices are welcome.

The football team has done well this season with five wins and two losses. Recent wins were over the Headhunters 12-0 (a previously undefeated team) and over the Gaiters 18-6. John Fite is athletic chairman for the boys. Next month boys' basketball begins with our team playing other BSU teams across the state.

About 35 students attended the BSU Student Convention in Cookeville, Tennessee, on October 29, 30, and 31. The group left MTSU

(Continued On Page 8)

Flashbacks of HOMECOMING



Homecoming is a time to make memories. It signifies the past, the present, and looks toward the future. Homecoming 1965 at MTSU was no exception. A beautiful November Saturday climaxed many weeks of planning and preparation and is preserved here through flashbacks of homecoming.

The morning started with a breezy briskness as students hurriedly put last minute touches on floats and draped convertibles with crepe paper. A first place winner, the Vet's Club, had worked throughout the night to insure a uniqueness never shown before in an MTSU parade. As the parade began to get under way, parade marshals struggled with the problem of getting sixty-four units into a planned formation for the "biggest" in parades. A few minutes late, but in best of form, the pageantry lined from the gym back to Clement Hall started to move. People lined the sidewalks the entire length of the parade and the atmosphere of smiles and waves could only have been topped by the awesome stares of excited children.

As a sunny noon arrived, the whole town was caught up in homecoming from the traffic jams to the filled restaurants. Back on campus the conversations of proud alumni relived times gone by and gazed with proud looks toward a younger generation, spotting a daughter; a son.

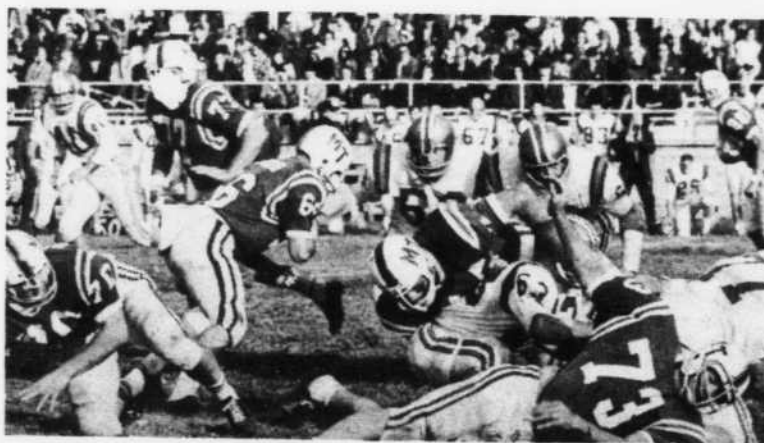
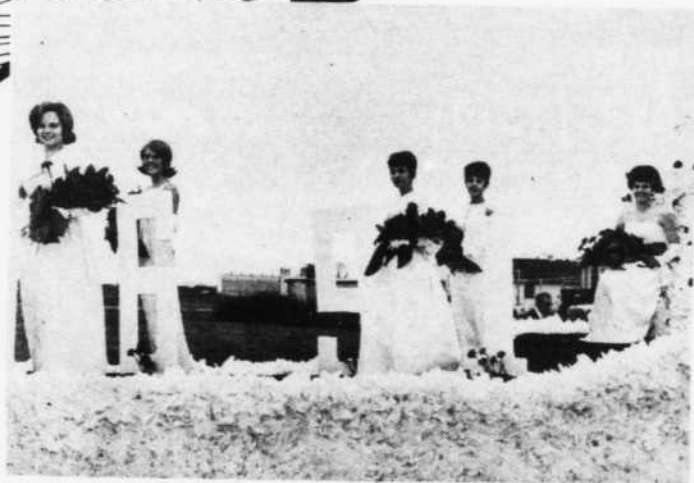
The crowds flowed toward Jones Field for more than an hour as 8,500 fans scurried for a good football seat. The brightness of a green field, an American flag, white mums, and the smiles of four beautiful girls and a queen were there for a photographer's paradise.

The excitement of a competitive first half gave way to a few moments of graveness following the first quarter as the persuasive voice of an announcer gave introduction to the "Passing of the Bucket" for thirteen-year old Ruby Hill. The true spirit of the day was shown as all down the rows wallets began to appear.

Halftime was more beautiful than ever. Queen Linda was crowned, the parade winners announced, and the Band of Blue played for its best and most faithful audience.

The darkening skies over the second half of the game were not to affect the Blue Raiders as they came through when most needed.

The crowd parted hungry but happy, ready to eat and begin an awaited night of parties and dances. The enthusiasm for homecoming couldn't have been better. The frantic moments of those in charge were resolved as the day ended and all had gone well. Homecoming 1965 is a day to be remembered.



From The Sidelines

by Butch Rutherford

TURKEY DAY

As usual the Raiders will play the annual Turkey Day game against that school from Cookeville. If I have a choice of birds, I will take the Tech Eagles. A victory would be the best dinner one could order.

In this 40 game series no team has ever won four straight games. This year a Raider victory would break the 40-game jinx.

BASKETBALL IS COMING

For one month now Coach Ken Trickey has had his boys on the hardwood getting them ready for a 24-game schedule.

This year's schedule is highlighted by a trip to Dayton, Ohio, where the Raiders will take on the Dayton Flyers led by All-American Henry Finkle, who stands 7'0". Dayton is rated 14 in the nation by pre-season ratings.

The Raider team has already suffered a blow, by guard Chuck Fielder breaking his left hand last week.

This year's coaches, Ken Trickey and Jimmy Earle, will be assisted by former Raider star Bennett Jent. In all probability Jent will serve as chief-scout and help Coach Earle with the Freshmen squad.

The Raiders open the season at home on December 2 against UTMB. For once, I would like to see the MTSU students fill the gym for our first Raider home basketball game.

"THE BULL"

"The Bull" is none other than MTSU full-back Larry Mathews. All Larry Mathews has done to earn the name of "The Bull" is become the best running back in the OVC.

Mathews is not among the OVC leaders in rushing, but he does lead the Raiders with 296 yards and 4.6 per carry. It also must be noted that the Raiders are primarily a passing team, and our foot troops do not carry the pigskin as much as do other runners throughout the league.

As a runner, Mathews is big and fast for his size. His speed is not his greatest asset, however, it is his desire to play football and to do what he has to do to win, even if it is playing linebacker as he did for one game this year. One might say his second greatest asset is the way he hits. "The Bull" hits harder than any other back in the OVC. Even when he makes only a few yards, he jars his tacklers. No one man can bring him to the ground — it takes a whole host of tacklers.

Besides his running, Mathews is a good blocker. When he teams with Bill Robertson, it is almost impossible to get to quarterback Teddy Morris.

Oh yes, Larry "Bull" Mathews is only a sophomore.

* * *

THIS AND THAT

MTSU Cross Country team beat Austin Peay on November 6 by a score of 15-46. In cross country 15 is a perfect score.

MTSU track team recently received a big jolt when 100-dash record holder Bobby Mallard enlisted in the armed forces. Good luck Bob.

Roundballers Set Goal As OVC Contenders

New head basketball coach Ken Trickey has his work cut out in trying to build Middle Tennessee State University into an Ohio Valley Conference contender in 1965-66.

The Raiders, who won only 6 of 24 contests last season, lost five of the top six scorers from the 1964-65 squad via graduation.

Top returnee is guard Jack Sutter, a 6-1 junior. Sutter averaged 9.3 points per game to rank fifth among the Blue Raider scorers last season.

Trickey's hopes for the coming campaign will be built around a couple of junior college transfers that could help the Raiders' cause. Jay Cole, a 6-2 former prep All-America player with Knoxville South will join the varsity from Martin Junior College.

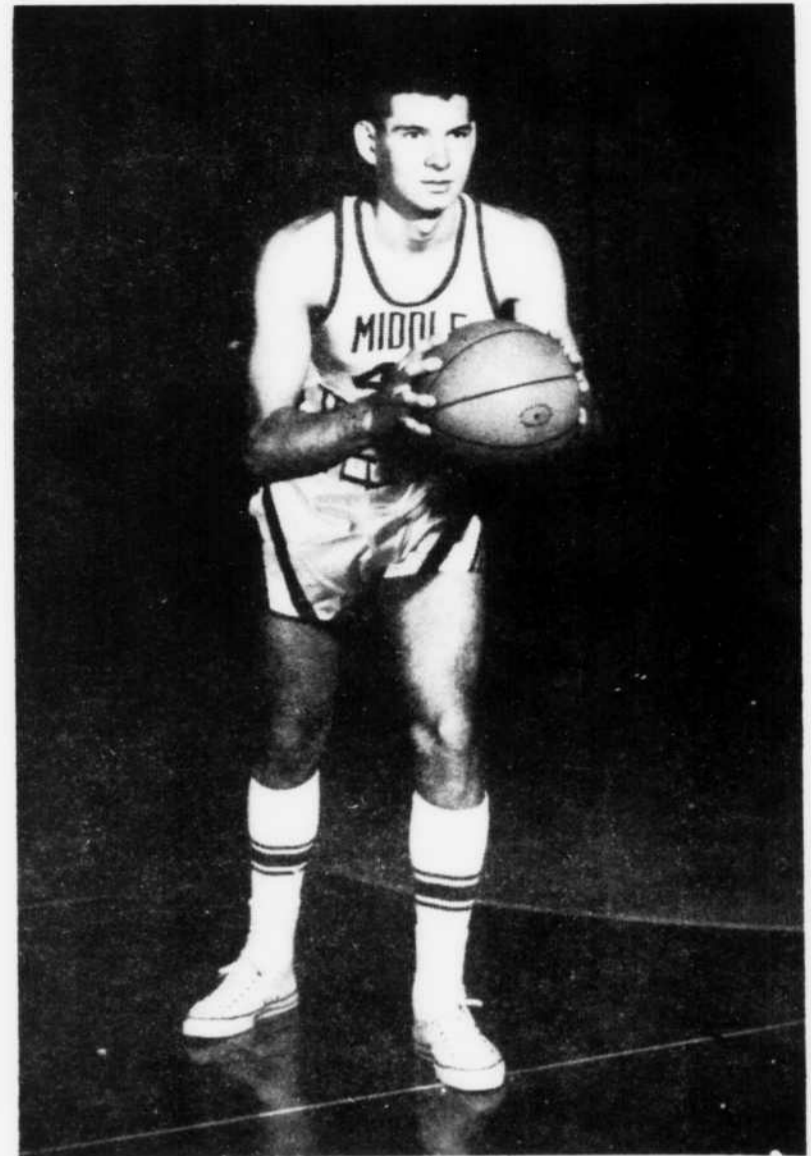
The high scoring forward averaged 25.8 points at Martin JC last year and was named "Player of the Year" in the Dixie Conference. In high school, Cole averaged 36.6 points and was the leading scorer in the nation on the prep All-America team.

Also reporting from the junior college ranks will be Jerry Bush, an outstanding guard with Martin last season. The 6' junior played high school ball with Murfreesboro Central.

Other returnees from last season include forwards Tom Whittington (captain), Ed "Boom-Boom" Cannon, and Jim Ghibaudy, center Barry Jackson, and guard Bobby Gardner. Cannon (6.6) and Jackson (6.7) are expected to provide the Bluemen with board strength.

Guards Chuck Fiedler and Terry Thomas will join the squad after a year of red-shirting. As sophomores, each won a letter in 1963-64, but were held out last season.

Newcomers will be Bill Boner, Ronnie Ward, and Gil Ford. Boner



TOM WHITTINGTON, 1965 basketball captain is pictured above.

played freshman ball with the Raiders two seasons ago, but did not go out for the varsity last year. Ward, a former high school great, will make his first attempt at collegiate ball as a sophomore. Ford is a junior college transfer from High Point, N.C. He will become eligible in January.



When you can't afford to be dull, sharpen your wits with NoDoz™

NoDoz Keep Alert Tablets fight off the hazy, lazy feelings of mental sluggishness. NoDoz helps restore your natural mental vitality... helps quicken physical reactions. You become more naturally alert to people and conditions around you. Yet NoDoz is as safe as coffee. Anytime... when you can't afford to be dull, sharpen your wits with NoDoz.

SAFE AS COFFEE



1965-66 VARSITY BASKETBALL ROSTER

No.	Player	Pos.	Ht.	Wt.	Age	Class	Ltr.	Hometown
10	Chuck Fiedler	F-G	6-1	170	21	Jr.	1	Logansport, Ind.
12	Jay Cole	F	6-2	185	20	Jr.	JC	Knoxville, Tenn.
14	Bill Boner	G	5-10	155	20	Soph.	0	Nashville, Tenn.
22	Jack Sutter	G	6-1	178	21	Jr.	1	Galatia, Ill.
24	Ronnie Ward	G	6-0	165	20	Soph.	0	Nashville, Tenn.
30	Jerry Bush	G	6-0	175	20	Jr.	JC	Murfreesboro, Tenn.
33	Jim Ghibaudy	F	6-4	195	22	Sr.	1	Cairo, Ill.
34	Terry Thomas	G	6-1	175	21	Jr.	1	Benton, Ill.
40	Tom Whittington	F	6-4	190	21	Sr.	2	Ewing, Ill.
44	Bobby Gardner	G	6-2	165	21	Jr.	1	Old Hickory, Tenn.
50	Barry Jackson	C	6-7	210	21	Jr.	1	Belleville, Ill.
52	Ed Cannon	F-C	6-6	205	20	Jr.	1	Harrisburg Ill.

Head Coach: Kenneth Trickey
Team Captain: Tom Whittington

Asst. Coach: Jimmie Earle

Campus Interview Schedule

November	Company	Positions
17	Farmers Home Administration U.S. Dept. of Agriculture	Accounting and Bus. Adm. Majors for positions in St. Louis, Mo.
17	Rose's Stores, Inc. (Stores located in N.C., S.C., Ga., Tenn., Ala., Ky., Va.)	Trainees for Retail Management
17	Arthur Andersen & Company	Staff Accountants
19	Tennessee Eastman Company Kingsport, Tennessee	Secretaries; Chemists (Secretaries may qualify after 2 years of college)
22	Ernst & Ernst	Staff Accountants
30	Travelers Insurance Company (Training Program in Nashville; Relocate upon completion)	Administrative-Underwriting, Field Representative for Sales Promotion

Ride The Free Bus To
BURGER BROIL

Good Food and Rapid Service Jackson Heights Plaza



ROTC SPONSORS for 1965-66 are pictured above. Left to right, on sidewalk, are Holly Mason, alternate; Kathy Edwards, brigade sponsor; first step, Sandy Sawicke, "B" Co. 1st Bn.; second step, Connie Wilgus, alternate; Janet Cope, "B" Co. 2nd Bn.; third step, Judy McInturff, 2nd Bn.; fourth step, Carolyn Crouch, "A" Co. 2nd Bn.; Peggy Odom, 1st Bn.; fifth step, Helen Strom, "A" Co. 1st Bn.; Linda Richardson, "C" Co. 1st Bn.; Ellen Goode, HQ Co. 1st Bn.; Gracy Aiken, HQ Co. 2nd Bn., and Donna Allen, "C" 2nd Bn.

Tryouts Dated For Student Directed Plays

The Department of Speech and Theatre announces a new first in its rapidly expanding theatre major program with the forthcoming productions of two plays, DYLAN and LEGEND OF LOVERS. These productions will be unique in that they are the first plays to be totally directed and produced in the department by student directors. These student directors will plan and execute the direction and production of these plays as the practical experience part of the course in advanced directing being taught for the first time in the theatre curriculum this semester.

These productions will be in addition to the major departmental production, TAMING OF THE SHREW, which is in rehearsal with performances scheduled on the evenings of November 17, 18, and 19.

Tryouts for the student directed productions will be held on Monday and Tuesday evenings, November 22 and 23, beginning at 7:30 in the Arena Theatre, Room 101 in the Dramatic Arts Building. Everyone interested is invited and encouraged to attend the tryouts.

There will be four separate casts selected by the student di-

rectors with a total of from thirty to forty parts to be cast as well as additional technical personnel. The students who will direct these plays are Carolyn Anderson, Richard Boutwell, Bill Lewis, and Carlton Sivells.

Bill Lewis will direct and produce DYLAN — the story of Dylan Thomas' American lecture tours. The cast includes six men and five women, all in major roles. Also important to this production will be technicians, who will be interviewed during the tryouts. Anyone interested in lights, sound, and stage managing is welcome.

Separate acts from LEGEND OF LOVERS will be directed and produced by Richard Boutwell, Carolyn Anderson, and Carlton Sivells. This play by Jean Anouilh is a modern version of the mythological legend of the fated lovers — Orpheus and Eurydice.

Performances will be given in the Arena Theatre on the evenings of January 10, 11, and 12 and will be open to the entire student body. The specific presentation dates will be announced at a later date.

DELBRIDGE STUDIOS

ED DELBRIDGE

SAM CAUSEY

124 N. Spring — 893-8922

"Personalized Portraits"

Did you know that the first school of forestry in the United States was established at Biltmore, N. C., in 1898 by a German forester, C. H. Schenck? That's right, say University of Tennessee foresters.

SDS MERCHANTS

The merchants listed below are offering their merchandise at reduced prices for MTSU students who are members of the Student Discount Service. Your SDS membership cards are on sale at the ASB office on the second floor of the Student Union Building. The cost is one dollar.

Bel-Air Service Center
Corner of Tenn. Blvd.
And Greenland Drive
2c Discount on Gasoline
and 10% Discount On All
Service and Accessories

Blanton NAPA
224 N. Front St.
Discount on Service Station
Net Price On Parts

The Cotton Patch
Jackson Heights Plaza
10% On — Coats—Formals
Handbags—Foundations

Mullins Jewelers
19 South Side of Square
10% Discount On All
Merchandise Except On
Keepsake Diamonds

Shacklett's Restaurant
121 E. Main St.
10% Off Regular Meal
Ticket Price
10% Off On Regular
Menu Price, Also

Bell Jewelers
8 North Side Of Square
10% Off On All Watches,
Rings, Jewelry And Other
Items Whose Price Is Not
Set By The Manufacture

**Brownie Burkett
Florists**
Jackson Heights Plaza
10% On All Purchases
Made For Cash Except For
Outgoing Telegraph
Orders and Weddings

Dixie Furniture Store
111 N. Maple Street
All Furniture—10%
All Appliances 5%
Discounts not valid on mer-
chandise which is being sold
at SALE prices.

Music Shop
102 E. Vine St.
20% On All Records

Star Cleaners
401 S. Maney Ave.
6 Days A Week—Cash Sales
2 Suits—\$1.25
2 Plain Dresses—\$1.25
3 Pants—\$1.25
3 Plain Skirts—\$1.00

Binford Motor Co.
755 N.W. Broad
10% Discount on All Parts

Cantrell's Shoes
South Side Square
All Merchandise—10%

Goodyear Service Store
201 South Maple Street
Tires, Batter and
Accessories—20%
Major Appliances
T.V. and Stereos—10%
Small Electrical
Appliances—10%

Pigg and Parsons
Jackson Heights Plaza
10% On—Suits—Sport Coats
Hats—Shoes—
Heavy Jackets—
Dress Slacks—
Cuff Link Sets—Ties

H. A. Todd Furniture
309 E. Main Street
20% On All Lamps,
Mirrors, Pictures
15% On All Furniture;
Chairs, Living Room,
Dressing Room, etc.

Bishop's Hair Stylists
Jackson Heights Plaza
10% Off All Beauty
Service Except Cosmetics
Or Retail Merchandise

**Cecil Elrod's
French Shoppe**
On The Square
10% On All Merchandise

Hut's Cafe
105 S. Church Street
10% Discount On All
Cooked Meals
(does not apply to
meal tickets)

Purnell Clothing
121 North Maple
All Ladies' Merchandise
10% Discount
Men's Shoes and Coats
10% Discount

Varsity Inn
1507 E. Main
10% Discount On Food
Orders Marked SDSMA

These discounts do not apply to items that are marked for special SALES.
Merchants may from time to time put other items than those listed on the Student Discount Service.

These Merchants Are Helping You You Help Them



Where The **ACTION IS!**

Raiders Smash Bucs 43-19 For Graduates

- TUESDAY**
Supreme Court
Circle K
Buchanan Players
First Young Artist Recital
- WEDNESDAY**
Dames Club in Tennessee Room at 3:15
Church Groups at 6:00
Gymnastics Club at 7:00 on the stage of the gym
Young Democrats meet at 7:30
Drama Club Play THE TAMING OF THE SHREW in the auditorium at 8:00
- THURSDAY**
Social Committee
Senate
Drama Club Play in Auditorium at 8:00
- FRIDAY**
Drama Club Play in Auditorium at 8:00
- SATURDAY**
Honor Practice in Auditorium at 8:00
ASB Movie FORTY POUNDS OF TROUBLE at 7:30
- SUNDAY**
ATTEND THE CHURCH OF YOUR CHOICE
Fall Semester Honor Recital in Auditorium at 3:30
- MONDAY**
Industrial Arts Club at 4:00

Church News

(Continued From Page 4)
on Friday afternoon and returned on Sunday.

NEWMAN CLUB

MTSU's Newman Club is hosting the state Newman Convention in Murfreesboro at the St. Rose of Lima Parish auditorium on November 19, 20, and 21. The convention will begin with Mass Friday and will terminate with Sunday Mass and breakfast at 9:00 a.m.

Some of the planned activities include a talk from Dr. Paulas, a workshop, and a question and answer period. A banquet and dance comprise part of the social activities being planned.

Pre-registration fee is six dollars. Contact Box 2626 MTSU for further information and registration blanks. Everyone who is interested is invited and urged to come.

WESLEY FOUNDATION
The Wesley Foundation had for its speaker on November 10, the Reverend Paul Allen, pastor of Trinity Methodist Church. His topic was "Christian Ethics." Rev. Allen gave many resources for finding answers to moral questions.

On November 17, the Reverend Glenn Mingledorff, pastor of First Methodist Church, will show a film, "Parable," which was shown in the Protestant Pavillion at the World's Fair this year.

WESTMINSTER FELLOWSHIP
The members of the Westminster Fellowship enjoyed a hayride November 5 at the Mac Sikes farm on Asbury Road in Murfreesboro. After cooking a supper of hot dogs and hamburgers, the group was driven around the farm by Mr. Sikes. Upon their return, they were treated to hot chocolate and doughnuts.

The gathering of MTSU Grads for the Raider homecoming saw a sluggish football team fall behind 19-14 at halftime before rallying for 29 points in the second half to smash ETSU 43-19.

East Tennessee took the opening kick-off and began filling the air with passes, continuing to do so throughout the day. But it was during the first half that the Wolfe to Waff playing gave the Bucs a 19-14 lead. This was the fifth time this season the Raiders have been behind and the fourth in a row.

The only spark the Raiders could manage during the first half was Morris passing to Jerry Smith and Herbert Owenby. Morris's passes accounted for both Raider TDs; a 15 - yarder to Smith in the first quarter and a 16-yarder to Owenby in the second quarter.

With the start of the second half, the Raiders took the kick-off. In 3:07 they marched into pay dirt, and set sail on what has been the most productive Raider half this season. Leading this assault on the East Tennessee goal line was Teddy Morris and his golden arm, aided by glue-fingered Jerry Smith. The Raider foot troops also came to life during the second half after gaining only 35 yards during the first half. The foot troops, paced by Larry "Bull" Mathews, and "Bullet" Bob Hlodan raced for 171 yards. Bob Hlodan's 75 yard-run was the longest run by a Raider this season.

With the score 21-19, ETSU suffered a staggering blow when quarterback Walter Wolfe received a neck injury and left the game, thus ending the ETSU offense for the day.

Teddy Morris, as usual, was brilliant. He was involved in five of the Raider scores, three by the air and two on the ground.

For the day Morris hit on 19 of 32 passes for 274 yards. His passing total now stands at 1,496 yards for the year, this leaves him 83 yards short of the all-time single season passing mark held by Western's Jimmy Fiex. Fiex's total is 1,581.

Morris also broke the OVC single season total offense by raising his total to 1,565, smashing the old record of 1,565 held by Murray's Charley Forrest of last year.

Raider wingback Jerry Smith was also in on the record breaking as he pulled in 11 Morris passes for TDs, thus giving him 44 receptions for the season to breaking Jimbo Pearson's old record of 38.

The last Raider TD was engineered by Billy Walker as he hit Pat Morrison for a 12-yard pay dirt pass.

Club News

The MTSU Rodeo Club officers for 1965 are: Jerry Bates, president; Jim Adcock, vice-president; Nancy Lovelace, secretary; Corky Stone, reporter; and Mike Jones, treasurer.

Preston Fowlkes, Jr. is the rodeo chairman, and Susan Blackburn was elected ASB representative.

On October 21 the club sponsored a hayride and wiener roast, with 30 people participating.

Cross-Country Team Beats East Tenn.

MTSU's cross - country team joined Blue Raider homecoming festivities with a 23-35 victory over East Tennessee State University. Low score wins in cross-country.

Coach Dean Hayes' Raiders took six of the first eight places in closing out its dual match season. The Raiders finished with a 3-2 record, but will participate in the Ohio Valley Conference meet later this month.

East Tennessee's Gary Pritchard crossed the finish line first over the four mile Veterans Administration course with a clocking of 21:34. Paul Anderson was just behind the leader for MTSU's number one pacer.

Pi Gamma Mu New Initiates Announced

Twenty - eight social science and history majors were inducted into Pi Gamma Mu during the annual fall initiation November 9.

The initiates included Jon Riley Bodkin, Chattanooga; Richard Joseph Call, Murfreesboro; Patricia Faye Climer, Lebanon; Robert Morris Compton, Columbia; David Lynn Dale, Tullahoma; Virgil Hern Davis, Collinwood; Richard Clayton Foster, Lebanon; Barbara Ann Freeman, Nashville; James Terry Gladney, Loretto; Larry Richard Gregory, Nashville; Billie Harold Hix, Gainesboro; Stephen Curtis Jackson, Chattanooga; David Herman Jones, Murfreesboro; Sylvia Opal Lauderdale, Cleveland; Mrs. Mary Catherine Lynch, Smyrna.

Sandra Elaine Meeks, Palmer; Andrew Woodfin Miller, Murfreesboro; Donald Perry Morse, Smyrna; Pamela Jeanne Petty, Nashville; Richard Henry Sittell, Nashville; Mrs. Gloria Johnson Skinner, Smyrna; Betty Jane Spry,

Nashville; Robert Cannon Steelman, Jr., Montgomery, Ala.; Michale Stephen Sweeney, Nashville; George Everette Waldren, LaVergne; Mrs. Helen Juanita Baker White, Tullahoma; James Paul Womack, Chattanooga; and Donald Elmer Yager, Murfreesboro.

MOVIE SCHEDULE
PRINCESS THEATRE

Sunday-Tuesday RED LINE SEVEN THOUSAND Wednesday (only) WRONG ARM OF THE LAW	Thursday-Friday MR. MOSES Saturday (only) GIRLS ON THE BEACH WHO'S MINDING THE STORE
---	---

STARLITE DRIVE-IN THEATRE

Sunday-Wednesday VON RYAN'S EXPRESS	Thursday-Saturday GOOD-BYE CHARLIE PLEASURE SEEKERS
---	---



Steve Andrews
P.O. Box 3235
For Further Information

3 BIG STORES

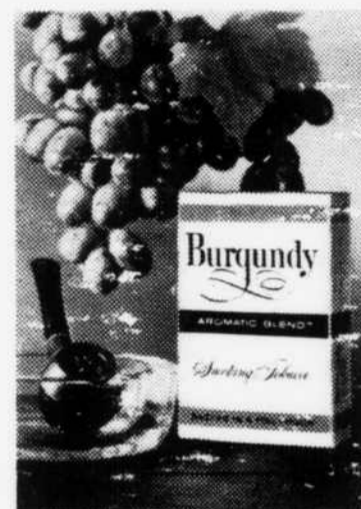
Gallatin Rd. at Old Hickory Blvd.,
2511 Nolensville Rd.,
404 Broad St.,

K FURNITURE CO.

BUY at K PAY at K

SHOP THE FRIENDLY WAY, FOR ALL YOUR NEEDS AT K.

Have 18 bowls of vintage burgundy ...on us!



Burgundy
AROMATIC SMOKING TOBACCO

Enjoy a free full-size pouch of Burgundy. An aromatic blend of vintage tobaccos, fine taste and pleasant wine aroma, for the smoothest smoke ever to come out of a pipe. Clip the coupon now. Cheers!

P. LORILLARD COMPANY
200 East 42nd Street, New York City 17, N. Y.

Please send me a free package of Burgundy Smoking Tobacco.

Name _____
Street _____
City _____ State _____ Zone _____

COLLEGE STUDENT DRY CLEANING SPECIALS

Trousers	3 for \$1.20
Skirts (Plain)	3 for 1.20
Ladies Sweaters	3 for 1.20
Ladies Slacks	3 for 1.20

COMPLETE LAUNDRY SERVICE

KEEN KLEANERS
PHONE 893-5044 — 1511 E. MAIN ST.
AT COLLEGE HEIGHTS
ONE BLOCK FROM CAMPUS — MURFREESBORO, TENN.